

### ⑨ Other Document

Display "Other" in Data Box.

## ❖ Selecting function from flip menu

<Example> Displaying image from "My Picture" in Data Box

1 Touch  in flip menu

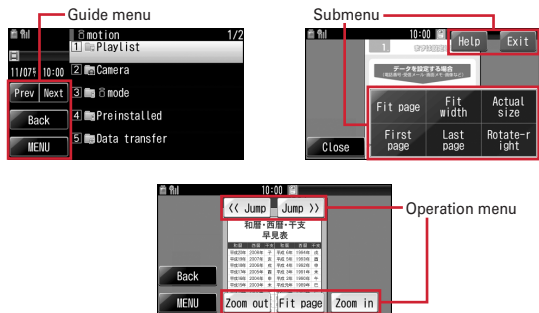
2 Touch a folder ▶ Touch an image

Image appears in a full-screen.

## ❖ Basic operations

Basic operations of each function are as below.

### ■ Guide menu/Submenu/Operation menu



- Common guide menu items are as below.

[Prev] [Next] : Switch a page when a list has multiple pages or view previous or next mail from mail details screen

[Back] : Return to the previous screen

[MENU] : Display submenu

[Close] : Close submenu (also close by touching area other than guide menu or submenu)


- Common submenu items are as below.

[Help] : Display touch operation guide (only if double-touch, slide and slide quickly are available other than from guide menu or submenu)

[Exit] : Exit the function and return to flip menu


- Menu items other than common menus differ depending on functions.→P42

### ■ Switch displaying/hiding menu

Pressing  or touching the display (except MENU) switches displaying/hiding menu on Full-screen display except in Still camera or Movie camera. If no operation is performed for approximately 5 seconds after the menu appears, the menu disappears automatically.

### ■ Operations to exit functions

To exit a function and return to flip menu, touch [MENU] on the guide menu and [Exit] on the submenu. When a confirmation screen for exiting appears, touch [Yes].

- You can also return to flip menu by touching [Back] repeatedly on guide menu.
- When the menu is not displayed, press  to display and then operate.

### ■ Selection of an item

You can directly touch to select an item such as folder or file, or link on Full Browser screen.



Selection of data item



Selection of link item

### ■ Operations available on a confirmation screen

When a confirmation screen for performing the function during an operation appears, touch an item in the confirmation screen (such as "Yes").

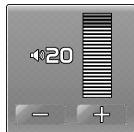
- Touch [Close] in guide menu to close the confirmation screen.

### ■ Channel switch (while watching 1Seg)/volume adjustment (while watching 1Seg, playing video, playing movie/i-motion)

- Slide right or left on the screen and touch  or  on channel switch panel.
- Slide up/down on the screen or touch [Volume] on operation menu, and touch  or  on volume adjustment panel.



Channel switch screen



Adjust volume screen

### ❖ Operations available from each function


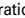

#### ■ Still camera/Movie camera

Menu operations→P212, 216, 224

#### ■ Activate 1Seg

Menu operations→P234, 238

#### ■ Full Browser

- On submenu, [Home], [Add bookmark], [Display bookmark], [Browser history] and [Zoom] are available.
- On operation menu, [Reload], [] (Previous page) and [] (Next page) are available.
- The operations below are available in addition to menu.
  - Scroll : Slide (or slide quickly) on the display
  - Zoom Out/Zoom in (Zoom) : Double-touch on the display
  - Display linked pages (mail address not supported) : Touch link item
- While obtaining data, [Cancel all windows], [Cancel this window] are available on submenu.
- When Motion sensor is "ON", hold down  and tilt FOMA terminal front, back, right or left to scroll the screen.
- Character entry on Full Browser screen→P382


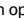
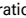
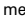
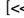
### ■ Common operations to 1Seg image/video, My Picture, i-motion, My Document (PDF data), Other Document (other data)

- On folder list, the operations below are available.
  - Select folder : Touch folder name
  - Switch to microSD list (except 1Seg image/video) : Touch [MENU] on folder list and touch [microSD]
  - Select file : Touch file name or a thumbnail image
- **My Picture folder list and while displaying images**
- [Slideshow] is available from submenu of folder list.
- While displaying image, the operations below are available.
  - Zoom out/Same magnification/Zoom in : Double-touch on the display and touch [Zoom Out]/[QCIF]/[Zoom in] (touch once to zoom in or out by 20%)
  - Scroll : Slide on the display
  - Display previous or next screen : Slide quickly right or left on the display

#### ■ Playing movie/i-motion

- On operation menu, [PAUSE], [PLAY] and [VOLUME] are available.
- On submenu, [STOP] is available.
- While playing, the operations below are available in addition to menu.
  - Switch Wide/Full screen : Double-touch on the display
  - Rewind/Fast forward play : Slide right or left on the display (during pause, slide to rewind/fast forward the movie by 1 minute)
- In sliding operation, rewind/fast forward continues until you release your finger and playback starts from the point you release your finger.
- Sliding operation is available only when guide menu or operation menu is not displayed.

#### ■ 1Seg video playing

- From operation menu, []/[] (rewind/fast forward), [] (pause), [] (play), [-Search]/[>-Search] (back/forward by 1 frame during pause), [Subtitles], [ViewSW] and [Volume] are available.
- On submenu, [Stop playing], [Skip FF 30 sec], [Skip REW 15 sec], [Start beginning], [Previous video] and [Next video] are available.

### ■ While displaying My Document (PDF data)/Other Document (other data)



- From operation menu, [Zoom In], [Fit page], [Zoom Out] and [<< Jump]/[Jump >>] (move by 10% of the whole page) are available.
- From submenu, [Fit page], [Fit width], [First page], [Last page] and [Rotate-right] are available.
- While displaying My Document (PDF data), [Actual size] is available on submenu.
- While displaying Other Document (other data), [Mobile mode] and [PC mode] are available on submenu.
- The operations below are available in addition to menu.
  - Scroll : Slide on the display
  - Zoom Out/Zoom in : Double-touch the display

### ❖ Other functions

In addition to functions that can be started from flip menu, the functions below are available in flip style.

#### ■ Receiving a call or PushTalk call

You can touch [Talk] to answer a call or PushTalk call on the incoming call screen. Hold FOMA terminal with the earpiece up to talk in flip style.

- On guide menu, [Talk], [On hold] (for calls only) and [Disconnect] are available. [On hold], [Cancel] and [Disconnect] are available during a call. [Disconnect] is available during a PushTalk session.
- When a call arrives, from submenu [Call rejection], [Voice mail] and [Call forwarding] are available.
- For only adjusting volume,  reduces and  increases the volume.
- You can also answer a call using Flat-plug Earphone/Microphone with Switch or Bluetooth device.

#### ■ Making a voice call


You can make a voice call using Earphone/Microphone with Switch. During a call, [Disconnect] is available on guide menu.

### ■ Viewing mail

The reception result screen appears when receiving a mail. Touch "Mail" and the folder to display the received mail details screen. The same operation is available when the style is changed from normal to flip while mail folder list or mail list is displayed.


- The operations below are available on the received mail details screen.
  - Scroll : Slide up or down
  - Switch to previous or next mail : Slide quickly right or left on the display
  - Stop attached melody : Double-touch the display
  - Zoom out/Same magnification/Zoom in : Touch the display then touch [Zoom Out]/[QCIF]/[Zoom In]
- For Decome-Anime, touch [Preview] to play Flash graphics. During playing, [Retry], [Stop] and [Skip] (return to the message text display) are available.
- [Zoom in/out] is available from submenu of mail list screen.

### ■ Viewing received i-concier information

When i-concier information is received, you can touch [View] on the confirmation screen of received information. Restore the style to normal and press  to view the information. When you touch [OK] or [Close] in flip style, the confirmation screen closes and the screen in operation reappears.

### ■ Stopping alarm clock sound, schedule reminder or countdown timer

Touch [Stop] or an image displayed while alarm is sounding to stop the sound. When you touch while Alarm clock is sounding, the sound stops or snooze is activated.

Press  on the inactive screen (disabled if stopped by snooze of Alarm clock) or touch [Close] to exit.

- Touch [Close] then [Yes] to exit while the countdown timer is activated.
- While alarm is sounding, side keys work in the same way as in normal style.

### ■ Location request, Notify location

If a confirmation screen appears, touch [OK] or [Yes] to start Location request or Notify location. Touch [Clear] to abort the process.

### ■ Canceling auto-update of pattern definition

When a screen for automatically updating pattern definition appears, touch [Cancel] then [Yes] to cancel the auto-update of pattern definition.

### ◆ Using Multitask menu in flip style

In flip style, press **[F]** (1 sec. or more) to display menu. From the menu, you can select from 4 functions of Silent mode ON, IC card settings, Saving mode ON/OFF and Screen OFF.

- Some functions cannot be performed at the same time with the function in use.
- If you touch [Screen OFF], the screen light turns off and touch operations become unavailable. If you press **[F]**, **[M]** or **[C]**, restore normal style or receive a call or mail, the light turns back on.

When a voice or videophone call comes or Location request is issued while the light is off, press **[F]** to make touch operations available.

### Pointing device

#### Pointing operation using fingerprint sensor

By operating fingerprint sensor, menu operation or display operation of *i-appli* (compatible *i-appli* only) or Full Browser can be performed in the same way as multi-cursor key (**[M]**, **[C]**, **[F]**, **[M]**, **[C]**).

And, when displaying the menu on the sub-display, operations can be performed in the same way as **[M]**, **[C]** or **[F]**.

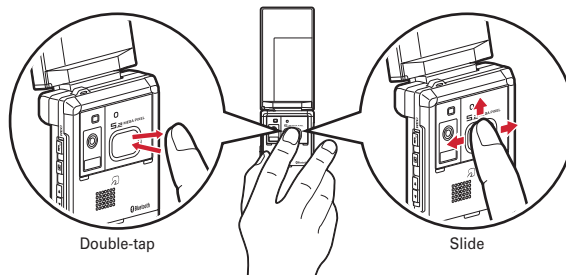
- Operations of pointing device are unavailable in the cases below.
  - Flip style
  - Stand-by display (Except in Focus mode)
  - When the menu of sub-display is not displayed with FOMA terminal folded
  - Calling screen
- Precautions on fingerprint sensor → P119 "Precautions for using fingerprint sensor"

### ◆ Pointing operation

Basic operations are as given below.

**Double-tap** : Tap the fingerprint sensor so that a ball of the finger hits the center of fingerprint sensor lightly 2 times. For this operation, touch the fingerprint sensor with a finger as parallel as possible.

**Slide** : While touching the fingerprint sensor lightly, move your finger up, down, right or left.



- Operations of pointing device and those of multi-cursor key are supported as below.

Pointing device	Multi-cursor key	Side key on the sub-display menu
Slide	<b>[M]</b>	<b>[M]</b>
Continue touching after sliding	<b>[M]</b> (1 sec. or more)	—
Double-tap	<b>[C]</b>	<b>[C]</b>
Touch for 1 sec. or more	<b>[M]</b> (1 sec. or more)	—

- When operating pointing device, do it with light touching. Scratching or giving excessive force may damage the fingerprint sensor.

## ◆ Setting the effective area or sensitivity of pointing device <Pointing device>

1  [Settings & NW services]   ▶ Set the required items ▶ 

**Use sensor for :** Set the effective area for pointing device.

- When setting to "F-browser/i-appli", pointing device can be used only for Full Browser and i-appli.
- If setting to "Not use", fingerprint sensor is available only for fingerprint authentication.

**Sensitivity :** Set the sensitivity for sliding operation.

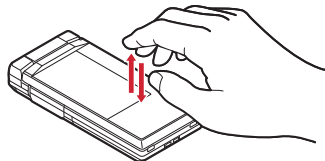
**Double-tap speed :** Set the sensitivity for double-tapping.

## Using motion sensor

Motion sensor allows you to perform various operations by double-tapping or tilting FOMA terminal.

### ■ Stopping alarm sound by double-tapping FOMA terminal

If double-tapping (tapping twice) while alarm clock, schedule reminder or countdown timer is sounding when FOMA terminal is folded, the sound stops. Alarm clock stops or performs snooze operation.



### ■ Flash graphics change

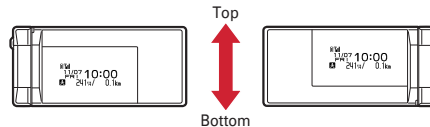
When setting Flash graphics compatible with motion sensor to stand-by display, image changes by moving FOMA terminal.

### ■ Changing orientation automatically when displaying an image


When displaying an image in My Picture in flip style, vertical/horizontal position or display size of the image automatically changes according to the orientation of FOMA terminal.

### ■ Reversing the display on sub-display

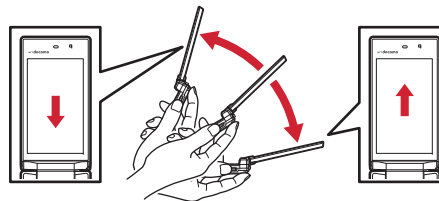
When displaying sub-display with FOMA terminal folded, the orientation of FOMA terminal is detected and the display changes accordingly.



### ■ Scrolling Full Browser screen by tilting the terminal

While holding down  on the Full Browser screen, tilt the FOMA terminal front, back, right or left to scroll the browser screen up, down, right or left. The more you tilt the terminal, the faster the scrolling speed becomes. For example, tilt the terminal forward to scroll down and backward to scroll up.

- The pointer does not move even after the screen scrolls.



### ■ Light changes

During a call or when FOMA terminal is folded, light changes by tilting FOMA terminal while light is on.

### ■ Changing vertical/horizontal position or orientation of an image automatically when shooting a still image

The orientation of still image to be saved changes automatically according to the orientation of FOMA terminal. → P220

**✓ INFORMATION**

- Depending on the spot or strength you tap, the alarm may not stop. And, note that tapping too strongly may cause malfunction.
- While walking or in the place with much vibration, operations to stop alarm sound by double-tapping or scroll Full Browser screen by tilting FOMA terminal do not work correctly. Also, do not walk while watching a screen. It is dangerous.
- It may operate as double-tapping when lifting FOMA terminal with your hand.

**◆ Enabling Motion sensor <Motion sensor>**

**[MENU] [Settings & NW services] [7] [8] ▶ [1] or [2]**

- Even if setting to "OFF", the Flash graphics compatible with motion sensor operate.

**Using UIM (FOMA card)**

**UIM (FOMA card)** is a card for storing user information such as phone numbers.

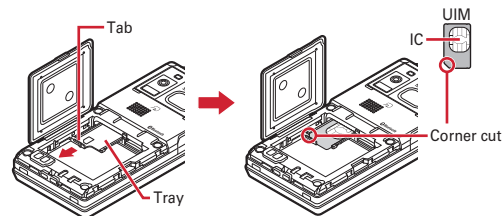
- If UIM is installed incorrectly or if there is a problem with UIM, you cannot make/receive a call or send/receive a mail.
- For details on handling UIM, refer to the UIM manual.

**◆ Installing/Removing**

- After turning the power OFF, fold FOMA terminal and hold it with your hand.
- Take care not to touch or scratch the IC part.
- Installing/Removing back cover and battery pack→P48

**■ Installing**

- ① Pull the tab and pull out the tray until it clicks.
- ② Hold UIM with the IC side up, align the beveled corner with the tray and push into the tray until it stops.

**■ Removing**

- ① Perform ① of installing operation.
- ② Take out UIM.

**✓ INFORMATION**

- Note that forcible installing or removing UIM, or installing battery pack with the tray inserted at a slant may break UIM or the tray.
- If the tray is removed, press it straight along the guide rail inside the UIM slot with UIM left detached.

**◆ Security code**

Two security codes, "PIN code" and "PIN2 code", are set for UIM.

- You can change the security codes yourself. →P118

## ◆ UIM operation restriction

FOMA terminal is provided with UIM operation restriction for protecting your data/ files or data/files copyrighted by a third party.

- When files or data are downloaded from websites or data attached to mails are obtained to your FOMA terminal with UIM equipped, UIM operation restriction is automatically set to these data or files.
- With UIM replaced or no UIM installed, data or files with UIM operation restriction set cannot be displayed or played. For i-αplli with UIM operation restriction set, no functions except deletion are available.
- Data or files with UIM operation restriction set cannot be transferred over infrared communication/iC transmission or copied/moved to microSD card.
- The data types subject to UIM operation restriction are as follows.
  - Videophone call message, Movie memo, Screen memo
  - i-mode mail attachment files (except ToruCa), images inserted to Deco-mail or signature, Decome-Anime template, MessageR/F, Deco-mail template containing data subject to UIM operation restriction
  - i-αplli (including i-αplli stand-by display), ToruCa (Details) image
  - Images (including GIF animations, Flash graphics and images downloaded from Data Center), i-motion, data compatible with contents transfer, melodies, PDF data, Chara-den, Word/Excl/ PowerPoint files, Machi-chara
  - Kisekai Tool, Chaku-uta<sup>®</sup>/Chaku-uta full<sup>®</sup>, Music&Video Channel programs
- \* "Chaku-uta" is a registered trademark of Sony Music Entertainment (Japan) Inc.

## ✓ INFORMATION

- When data subject to UIM operation restriction is set as stand-by display, incoming/ outgoing image, ring alert, etc., replacing UIM with another one or using FOMA terminal without UIM installed causes the sound and image settings to be reset to the default state. In this case, sound or image actually generated or displayed may be different from those set. If UIM used when downloading the data is installed, UIM operation restriction of the data is canceled and the original settings are restored (when data is used for Set random image on stand-by display, settings may be canceled).
- UIM operation restriction is not set to data obtained via infrared communication, iC transmission, microSD card or DOCOMO keitai datalink or still images/movies taken with the built-in camera.
- The settings below are saved to UIM.
  - My phone number
  - SMS settings (except "SMS report request")
  - DoCoMo Cert/User certificate of Manage certificate
  - Select language, UIM, PLMN setting

## ◆ Settings when replacing UIM

If replacing the currently installed UIM with another UIM, the settings below are changed.

Setting	Changed contents
My phone number, Select language, SMS settings (except "SMS report request"), "DoCoMo Cert"/"User certificate" of Manage certificate, PIN code and PIN2 code of UIM, PIN1 code ON/OFF, PLMN setting	Changed to the contents saved in the inserted UIM.
i-Channel setting, Reset call cost, i-Widget roaming set	Restored to the default settings.
Access setting of Full Browser	Set to "No" regardless of the setting before replacement.
Cookie set/delete of Full Browser	Set to "Invalid" regardless of the setting before replacement. Cookie information is retained, but if setting to "Valid" or "Valid(notify)" again, a confirmation screen for deleting Cookie information appears.
Set program of Music&Video Channel	The setting before replacement is canceled. Set the program again if necessary.

## ◆ UIM types

When using UIM (blue) in FOMA terminal, note that it differs in the items listed below from UIM (green/white).

Item	UIM (blue)	UIM (green/white)	Page
Number of savable digits of phone numbers in UIM phonebook	Up to 20 digits	Up to 26 digits	P86
User certificate download to use FirstPass	Unavailable	Available	P195
WORLD WING service	Unavailable	Available	P396
Service Numbers	Unavailable	Available	P389

### WORLD WING

WORLD WING is DOCOMO's international roaming service that you can make/receive calls with the same phone number overseas by UIM (green/white) and the terminals compatible with the service.

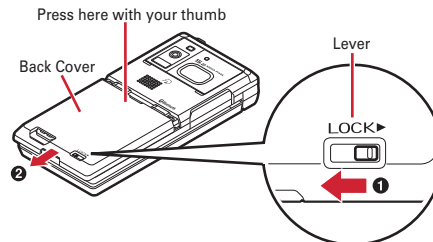
- \* If you subscribed to FOMA service on or after September 1, 2005, separate subscription is not required to use WORLD WING. Note that, if you declined to use WORLD WING at subscription to FOMA service or canceled it, you need subscription.
- \* If you subscribed to FOMA service on or before August 31, 2005, but not to WORLD WING, separate subscription is required to use WORLD WING.
- \* There are some charging plans unavailable.
- \* If UIM (green/white) is misplaced or stolen overseas, immediately contact DOCOMO and request for suspension of usage. Please see "General Inquiries" on the back of this manual for contact information. Be careful that you are charged also for calls and/or communications, if any, occurring after misplacement or stealage.

## Installing/Removing battery pack

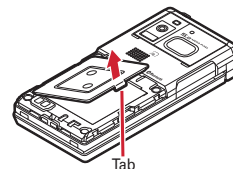
- After turning power OFF, fold FOMA terminal and hold it in your hand.
- Removing battery pack may cause reservation of Software update to be canceled. When the date and time are set with Auto time adjust set to "OFF" in Date & time, removing battery pack may delete date and time.

### ■ Installing

- ① After releasing the lock by sliding back cover lever in the direction of ❶, push back cover with your thumb while sliding back cover in the direction of ❷ approximately ❶ mm to remove it.

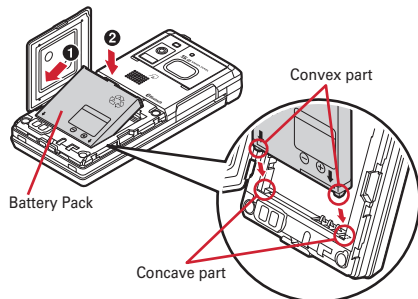


- \* When you cannot slide back cover smoothly, hold FOMA terminal and slide back cover with both of your thumbs.
- ② Pinch the tab of the inner lid, and pick it up in the direction of the arrow to open.
- \* The inner lid is structured to be closed tightly to maintain the waterproof performance. Note that, if you try to open it forcibly, your nail or finger may be injured.

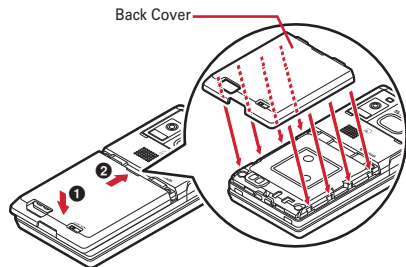




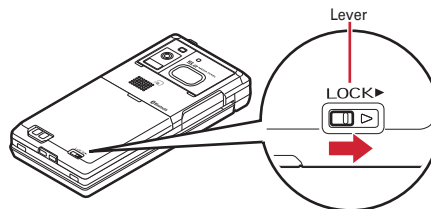
- ③ With the label side of the battery pack upward, place the convex part of the battery pack to the concave part of FOMA terminal and plug in the direction of ①, and fit it in by pressing in the direction of ② and close the inner lid.



- ④ Place the 8 tabs of back cover to the notches, press back cover in the direction of ① to avoid forming any clearance between FOMA terminal and back cover, and slide it in the direction of ② to install.

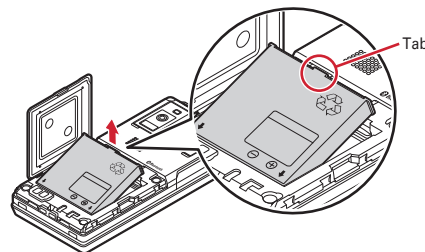


- ⑤ Slide the lever of back cover in the direction of the arrow to lock.



#### ■ Removing

- ① Perform the procedure ①-② of Installing.
- ② Pinch the tab of battery pack and pick it up in the direction of the arrow to remove.



#### ✓INFORMATION

- Installing battery pack forcibly into FOMA terminal may damage FOMA terminal jack.
- FOMA terminal or back cover may be damaged if you install or remove battery pack by a method except the procedures above or if you press too hard.
- To prevent water seepage, install back cover firmly and lock it with the lever.
- The rubber packing of the inner lid has an important function to maintain waterproof performance. Do not remove or damage it. Also, prevent dust from adhering to it.

### ❖ For better battery pack performance

- **Do not charge the battery for an extended period (several days) with FOMA terminal turned ON.**

After charging has completed with FOMA terminal turned ON, the power is supplied to the terminal from the battery pack. If FOMA terminal is left in that state for a long time, the battery pack may run out causing the low battery alert to sound after using only a short period of time. In this case, remove FOMA terminal from the AC adapter, desktop holder or DC adapter and then reconnect it and charge the battery again.

- **To promote environmental conservation, return your used battery pack to NTT DOCOMO sales outlets, our corporate agencies or the shops that collect used battery in your community.**



Li-ion 00

### Charging

The battery pack does not have a full charge at time of purchase. Use AC/DC adapter for FOMA terminal to charge the battery before using FOMA terminal.

- To get the maximum performance from F-01A, use battery pack F10.

### ❖ Charging times (approximate)

The times below are the times for charging an empty battery pack with F-01A's power switched OFF. Charging with the terminal ON or under low temperature requires longer time.

AC adapter	Approx. ●●● min.
DC adapter	Approx. ●●● min.

### ❖ Operation time on full charge (approximate)

The times below vary by the charging method and operating environment.

Continuous stand-by time	FOMA/3G	Stationary (Auto) : Approx. ●●● H Moving (Auto) : Approx. ●●● H Moving (3G static) : Approx. ●●● H
	GSM	Stationary (Auto) : Approx. ●●● H
Continuous call time	FOMA/3G	Voice call : Approx. ●●● min. Videophone call : Approx. ●●● min.
	GSM	Approx. ●●● min.
1Seg watching time		Approx. ●●● min. (1Seg ECO mode : Approx. ●●● min.)

- Continuous stand-by time indicates the approximate time that the phone can receive radio waves normally with F-01A folded. Call, communication or stand-by time may be reduced to about half, or 1Seg watching time may be reduced due to battery pack charging condition, function settings, operating environment such as ambient temperature, radio wave conditions in the area of use (the radio waves are weak or absent), etc. Call, communication or stand-by time is reduced by performing i-mode communication. Also, even with no voice calls or i-mode communications made, continuous call and continuous stand-by times are reduced by making PushTalk sessions, creating i-mode mail, activating downloaded i-appli, using i-appli stand-by display, performing data communication or multiaccess, using camera, playing movie/i-motion, obtaining or playing Music&Video Channel program, playing music with Music player, activating or recording of 1Seg, connecting via Bluetooth or doing other operations.
- Continuous call time indicates the approximate time that the phone can send or receive radio waves normally.

### ❖ Battery pack life

- The battery pack is a consumable part. Each time it is charged, time available with each charging reduces.
- When a time available with each charging is reduced to about a half from that of a new battery, replacement of the battery is recommended because it is near the end of life. The battery pack may swell out as it comes to near the end of its lifetime depending on the usage conditions, but it is not a problem.
- The battery pack's life may be reduced by using i-appli or videophone or watching 1Seg while charging.

### ❖ Battery charge

- For details, refer to the operation manuals for FOMA AC Adapter 01/02 (optional), FOMA AC Adapter 01 for Global use (optional) or FOMA DC Adapter 01/02 (optional).
- FOMA AC Adapter 01 is applicable only to 100V AC. Though FOMA AC Adapter 02 and FOMA AC Adapter 01 for Global use is applicable to 100-240V AC.
- AC Adaptor has a plug dedicated to 100V AC (for domestic use). When using the AC adapter in the range of AC 100V and 240V overseas, a conversion plug adapter applicable to the country you are staying is required. Do not charge the battery using a transformer for overseas travel.

### ❖ INFORMATION

- Some i-appli remains operating even when FOMA terminal is folded, consuming power. In this case, the call, communication or stand-by time may be reduced.
- During a call or communications, charging may not finish. Charging may not complete if you start battery charging while watching/recording 1Seg, playing movie/i-motion, obtaining Music&Video Channel program, activating Music&Video Channel player or Music player, running i-appli. In this case, it is recommended to end the operation, and then charge the battery.
- Charging may not be completed depending on the settings of Display & Key light or in some charging methods, for example, charging FOMA terminal in a open state with "Always" set to Normal use in Display light time of Display & Key light. To complete charging, it is recommended that charging be done with FOMA terminal folded.
- If you use the videophone or make packet communication or 64K data communication while charging, internal temperature of FOMA terminal may increase and the charging may not finish normally. In this case, wait until the temperature drops and try again.

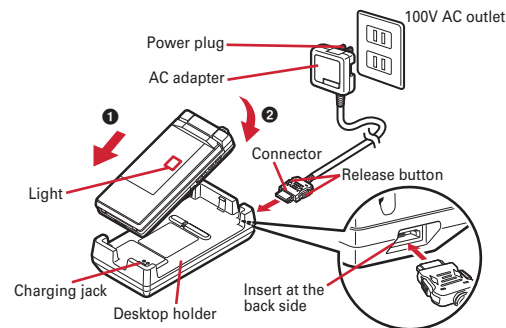
### ❖ Charging using AC adapter or Desktop holder

Read the respective instruction manual when using the optional FOMA AC adapter, DC adapter or Desktop Holder.

- It is recommended that Desktop Holder be used for charging to prevent water seepage through external connection jack.
- The battery pack cannot be charged without FOMA terminal. When charging the battery pack, install it to FOMA terminal.
- FOMA terminal can be charged under any usage style.

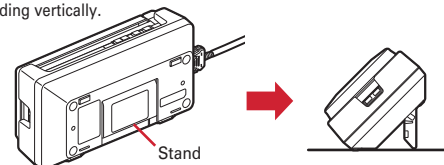
### ■ Using desktop holder and AC adapter in combination for charging

- Insert the AC adapter to the desktop holder, with the arrow on the AC adapter's connector upward.
- Unfold the AC adapter's power plug and insert it into a 100V AC outlet.
- With FOMA terminal folded or in flip style, connect the charging terminal of FOMA terminal with the charging jack of Desktop Holder (❶), and set FOMA terminal in the direction of the arrow (❷) until it clicks.
- After charging is completed, hold Desktop Holder and remove FOMA terminal.



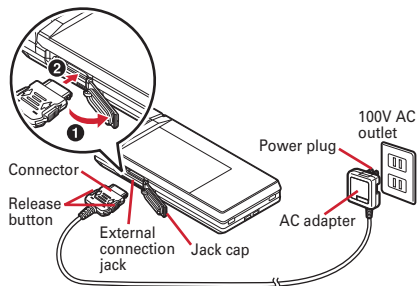
### Using desktop holder standing vertically

When pulling out the stand at the back side of desktop holder, you can use desktop holder standing vertically.



### ■ Charging the battery using AC adapter only

- ① Open jack cap (1) of FOMA terminal, hold the connector horizontally with the arrow side upward and insert it to the jack. (2)
- ② Unfold the power plug and insert it into a 100V AC outlet.
- ③ When charging is over, pull out the power plug from the outlet, and pull out from FOMA terminal horizontally while pressing the release buttons on both sides of the connector.



### ❖ Charging in a car

By using FOMA DC Adapter 01/02 (optional), charging is available in a car.

- For details, refer to the operation manual of DC adapter.
- When FOMA terminal is not used or you are leaving the car, disconnect the cigarette lighter plug of the DC adapter from the cigarette lighter socket and disconnect the DC adapter connector from FOMA terminal.
- The fuse (2A) of the DC adapter is a consumable part. Contact your nearest automotive supply store for a replacement.

### ✓ INFORMATION

- Insertion or removal of the AC and DC adapter connectors should be done slowly and carefully so that they are not given excessive force. When disconnecting the connector, pull it straight while pressing the release button. Applying an excessive force to disconnect the connector may give damage to it.

### ❖ Operations and precautions for charging


When charging starts, a charge start alert sounds, light turns on and the battery icon on the display or sub-display blinks. When charging is over, a charge completion alert sounds, the light turns off and the battery icon stops blinking.

- When starting the battery charging, the light turns on in red. In some environments, the light may not light immediately when charging starts; this is normal and not a malfunction. However, if the light does not turn on after a while, disconnect FOMA terminal from the AC adapter, desktop holder or DC adapter then connect it again to start charging. Contact the sales outlet such as DOCOMO Shop if the light does not turn on for a while after charging starts.
- If you receive a mail or shoot with the camera while charging, the light turns on temporarily in a different color, but it turns on in red after a while. When the light blinks while charging except for these reasons→P444 "Troubleshooting"
- When installing the fully charged battery pack to FOMA terminal and connecting it to the AC adapter, desktop holder or DC adapter, the light may turn on for a moment and turn off. This is normal and not a malfunction.
- During a call, communication or PushTalk session, in Silent mode or Public mode or with Charge alert "OFF", the charge alert does not sound at start or completion of charge.
- If the battery icon is set with Kisekae Tool in other than "Preinstalled" folder, the battery icon set by default blinks.


## Remaining battery level

### Checking remaining battery level

A battery icon appearing on the top of the display shows an approximate remaining battery level.





 (Battery level 3) : Ample charge.




 (Battery level 2) : Low charge.

 (Battery level 1) : Very low. Charge the battery.

- The battery icon set by default varies by the color of FOMA terminal.
- When FOMA terminal is folded, the remaining battery level can be checked on the sub-display.

### ❖ When battery is almost exhausted

A message indicating low battery appears. Pressing any one of , ,  keys deletes the message temporarily. After a period of time, a battery alarm sounds from the speaker and all icons on the top of the display start blinking. The power is turned off after approximately 1 minute. While these operations stop when charging starts, press  to immediately stop the battery alarm.

- During a call, the message remains displayed and the battery alarm keeps sounding from the earpiece. After approximately 20 seconds, the call ends, the battery alarm sounds from the speaker and all icons on the top of the display blink.
- To stop battery alarm in flip style, press any of ,  and .

### ◆ Checking remaining battery level by sound and display <Battery level>

#### 1 [Settings & NW services]

The battery level is displayed and the keypad sound (→P100) is emitted according to the level. After a while, the screen returns to the menu list.

Battery level 3 : Three pips sound.

Battery level 2 : Two pips sound.


Battery level 1 : One pip sounds.

## Power ON/OFF

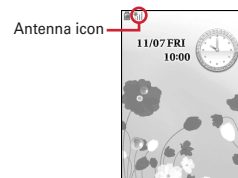
### Turning power ON/OFF

#### ❖ Turning power ON

##### 1 (2 sec. or more)







The wake-up screen appears and the stand-by display appears.  appears at the bottom of the display while reading UIM.

- A signal level icon appearing at the top of the display shows the approximate received signal level.



Antenna icon 

Stand-by display

Icon	    	
Received signal level	Strong $\longleftrightarrow$ Weak	Out of service area or where radio waves do not reach


- The battery icon set by default varies by the color of FOMA terminal.
- With FOMA terminal folded, the reception level can be confirmed on the sub-display.

#### ❖ Turning power OFF

##### 1 (2 sec. or more)



## ◆ Operations to perform after turning the power ON at the first time

When turning the power ON for the first time, operate in the order of "AdvancedMode setting"→"Initial setting". The settings made can be changed later.




- When initialization is finished, a confirmation screen of software update function appears. Press  to display the stand-by screen.

## ◆ AdvancedMode setting

### 1 "Yes" or "No" on the confirmation screen

- When selecting "Yes", "AdvancedMode" of Kisekai Tool is set. If you cancel the confirmation screen by pressing  or , the confirmation screen reappears when the power is turned ON the next time.

## ◆ Default setting

- Always set Password and Request permit/deny. When  or ,  is pressed before setting terminal security code or Request permit/deny, a confirmation screen appears asking you to exit. If you exit by selecting "Yes", this confirmation screen reappears when the power is turned ON the next time.

### 1 Set the required items on Initial setting screen ▶

**Date & time** : Set the date and time.→P55

**Password** : Change the terminal security code after performing authentication.→P117

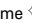


**Fingerprint** : After performing authentication, register a fingerprint to be used for authentication.→P120

**Keypad sound** : Set a confirmation sound emitted when a key is pressed.→P100

**Text size** : Set size of characters for phonebook, mail, etc.→P113

**Request permit/deny** : After performing authentication, set if you provide location information. To permit the location request in a specified period, set the permission period in Request permit/deny.→P301

## ◆ Checking Welcome mail

"Welcome デコメアニメ (Decome-Anime)  mail is saved by default.  appears on the stand-by display. If FOMA terminal is folded, the light (blinking) and mail light indicate that there is unread mail.

### 1

The next procedures→P156 Step 2 and the following steps in "Displaying mail in Inbox/Outbox"

## ✓INFORMATION

- When turning FOMA terminal ON, do not touch the fingerprint sensor with fingers before the stand-by display appears.
- When UIM is replaced, authentication is required after turning ON FOMA terminal. When authentication has succeeded, the stand-by display appears. If an incorrect terminal security code is entered 5 times consecutively or if authentication has failed 5 times consecutively when Fingerprint access is "ON", the power is automatically turned OFF (the power can be turned ON again).
- If no operation is performed with something displayed on the screen, the display light is turned off automatically according to the settings in Light time-out or Power saving mode. It also applies while making a call. The display light turns on again if there is any operation or incoming call.

## Select language

### Switching to English

You can select language from Japanese or English (Select language).

**1**  [Settings & NW services] **2** **6** **3** ▶ **1** or **2**



#### ✓INFORMATION

- This setting is also saved to UIM.
- Even if setting to "English", the displayed menu is not switched to English in some Kisekai Tool. Note that, when Kisekai Tool in "Preinstalled" folder is set, a menu dedicated to "English" is displayed.
- Even if changing this setting, the title of Shortcut icon is not changed from the language set when the shortcut icon was pasted.

## Date & time

### Setting date and time

You can set so that the time or time difference is automatically corrected or directly enter the date and time. With automatic correction set, the time is corrected when receiving the time information from DOCOMO's network in Japan or the time difference correction information from the telecommunications carrier used overseas.

**1**  [Settings & NW services] **7** **1** **1** ▶ Set the required items ▶ 

**Auto time adjust** : Set whether time is corrected automatically.

- When "ON", Offset can be set.
- When "OFF", set the date and time. Time zone and Summer time may also be set.

**Offset** : When "+", the displayed time is always set forward the specified period of time from the corrected time. When "-", the displayed time is always set back the specified period of time from the corrected time.

**Date** : The date can be entered up between January 1, 2000 and December 31, 2050.

**Time** : Enter the time in the 24-hour format.

**Time zone** : When moving to a place with time difference, set the time zone without changing the date and time settings.

- Time difference from the previously set time zone is calculated and displayed.
- Set "GMT+09:00" in Japan.

**Summer time** : When "ON", the displayed time is set forward one hour from the specified time.

#### ✓INFORMATION

<When setting Auto time adjust to "ON">

- Time or time difference is corrected when FOMA terminal is turned ON etc. If not corrected for a while after turning FOMA terminal ON, once turn FOMA terminal OFF and then turn it ON again. With no UIM installed or for some radio wave conditions, time is not corrected even if FOMA terminal is once turned OFF and turned ON again. For some i-appli, time correction is unavailable during operation.
  - The corrected time or time difference may have an error of several seconds.
- <When the correction has never been performed and date and time are displayed with "-" or "?">
- Flash graphics, Machi-chara, etc. that use clock or date/time are not displayed correctly. Also, functions requiring date/time information such as Auto start, Reserve, downloading or playing data with Replay Restriction, operating a user certificate, etc., cannot be activated.
  - Date and time of each data are not recorded and displayed as "----/--/--" or "-----". A segmental number furthermore (number to segmentalize) may be appended.

<When setting date/time with Auto time adjust set to "OFF">

- When the date/time are deleted because of removing of the battery pack or leaving the battery for a long time after the battery exhausted, set the date/time again after charging the battery.

**Caller ID notification****Notifying your phone number to the other party**

You can set FOMA terminal to display your number (Caller ID) on the other party's terminal when making a voice call, videophone call or PushTalk call.

- For details, refer to "Mobile Phone User's Guide [Network Services]".
- Caller ID is your important information. Carefully consider whether you want to include caller ID information when making a call.
- The caller ID is displayed only when the phone of the other party is a digital mobile phone etc. enabled to display the caller ID.
- Setting operations for this function is disabled from a location out of service area.

**1** **[ME]** **[Settings & NW services]** **[8]** **[4]** **[1]** **[1]** **[▶]** **[1]** or **[2]**

- Press **[ME]** **[Settings & NW services]** **[8]** **[4]** **[1]** **[2]** and select "Yes" to check the current settings.

**❖ Priority of Caller ID notification**

There are multiple methods to notify your phone number to the other party. If you set or perform these methods simultaneously, the caller ID operations are performed with the priorities below. The displayed setting and actual Notify/Not notify may differ.

- ① When setting a caller ID notification method in Call option for dialing →P67, 79
- ② When "186" or "184" is prefixed to phone number to dial →P65
- ③ Caller ID settings of phonebook (for PushTalk, dialing 1 party) →P91
- ④ Activate/Deactivate of Caller ID notification

**✓INFORMATION**

- If an announcement of requesting caller ID is heard when making a call, make a call again after setting your caller ID to be notified.

**User information****Checking your own phone number**

You can check your phone number (My phone number), Name, Mail address, etc.

**1** **[ME]** **[User information]**

Checking during a call etc. : **[MULTI]** **[0]**

**✓INFORMATION**

- For details of how to check i-mode mail address, see "Mobile Phone User's Guide [i-mode] FOMA version".
- When 2in1 is in Dual mode, you can press **[☐]** to switch User information between Number A and B.
- With 2in1 set to ON, if replacing UIM (2in1 subscriber → 2in1 subscriber), set 2in1 to OFF then set it to ON again to obtain the correct Number B, or obtain Number B from User information. →P356
- Also, if replacing UIM (2in1 subscriber → 2in1 non-subscriber), set 2in1 to OFF to update to the correct user information. →P391



## Specific Absorption Rate (SAR)

### ◆ SAR certification information

This model phone FOMA F-01A meets the MIC's<sup>\*1</sup> technical regulation governing exposure to radio waves.

The technical regulation established permitted levels of radio frequency energy, based on standards that were developed by independent scientific organizations through periodic and thorough evaluation of scientific studies. The regulation employs a unit of measurement known as the Specific Absorption Rate, or SAR. The SAR limit is 2 watts/kilogram (W/kg)<sup>\*2</sup> averaged over 10 grams of tissue. The limit includes a substantial safety margin designed to assure the safety of all persons, regardless of age and health. The value of the limit is equal to the international guidelines recommended by ICNIRP.<sup>\*3</sup>

All phone models should be confirmed to comply with the regulation, before they are available for sale to the public. The highest SAR value for this FOMA F-01A is 0.498 W/kg. It was taken by the Telecom Engineering Center (TELEC). The test for SAR was conducted according to the MIC testing procedure using standard operating positions with the phone transmitting at its highest permitted power level in all tested frequency bands. While there may be differences between the SAR levels of various phones and at various positions, they all meet the MIC's technical regulation. Although the SAR is determined at the highest certified power level, the actual SAR of the phone during operation can be well below the maximum value. For further information about SAR, please see the websites below.

World Health Organization (WHO) :

<http://www.who.int/peh-emf/>

ICNIRP :

<http://www.icnirp.de/>

MIC :

<http://www.tele.soumu.go.jp/e/ele/body/index.htm>

TELEC :

[http://www.telec.or.jp/ENG/Index\\_e.htm](http://www.telec.or.jp/ENG/Index_e.htm)

NTT DoCoMo :

<http://www.nttdocomo.co.jp/english/product/>

FUJITSU LIMITED :

<http://www.fmworld.net/product/phone/sar/>

\*1 Ministry of Internal Affairs and Communications.

\*2 The technical regulation is provided in Article 14-2 of the Ministry Ordinance Regulating Radio Equipment.

\*3 International Commission on Non-Ionizing Radiation Protection.

### ◆ Declaration of Conformity

The product "F-01A" is declared to conform with the essential requirements of European Union Directive 1999/5/EC Radio and Telecommunications Terminal Equipment Directive 3.1(a), 3.1(b) and 3.2. The Declaration of Conformity can be found at <http://www.fmworld.net/product/phone/doc/>.

This mobile phone complies with the EU requirements for exposure to radio waves. Your mobile phone is a radio transceiver, designed and manufactured not to exceed the SAR<sup>\*</sup> limits<sup>\*\*</sup> for exposure to radio-frequency (RF) energy, which SAR<sup>\*</sup> value, when tested for compliance against the standard was 0.415 W/Kg. While there may be differences between the SAR<sup>\*</sup> levels of various phones and at various positions, they all meet<sup>\*\*\*</sup> the EU requirements for RF exposure.

\* The exposure standard for mobile phones employs a unit of measurement known as the Specific Absorption Rate, or SAR.

\*\* The SAR limit for mobile phones used by the public is 2.0 watts/kilogram (W/Kg) averaged over ten grams of tissue, recommended by The Council of the European Union. The limit incorporates a substantial margin of safety to give additional protection for the public and to account for any variations in measurements.

\*\*\* Tests for SAR have been conducted using standard operation positions with the phone transmitting at its highest certified power level in all tested frequency bands. Although the SAR is determined at the highest certified power level, the actual SAR level of the phone while operating can be well below the maximum value. This is because the phone is designed to operate at multiple power levels so as to use only the power required to reach the network. In general, the closer you are to a base station antenna, the lower the power output.

### ◆ Federal Communications Commission (FCC) Notice

- This device complies with part 15 of the FCC rules. Operation is subject to the following two conditions :
  - ① this device may not cause harmful interference, and
  - ② this device must accept any interference received, including interference that may cause undesired operation.
- Changes or modifications made in or to the radio phone, not expressly approved by the manufacturer, will void the user's authority to operate the equipment.

### ◆ Industry Canada (IC) Notice

- Operation is subject to the following two conditions :
  - ① this device may not cause interference, and
  - ② this device must accept any interference, including interference that may cause undesired operation of the device.

### ◆ FCC and IC RF Exposure Information

This model phone meets the U.S. Government's and Canadian Government's requirements for exposure to radio waves.

This model phone contains a radio transmitter and receiver. This model phone is designed and manufactured not to exceed the emission limits for exposure to radio frequency (RF) energy as set by the FCC of the U.S. Government and IC of the Canadian Government. These limits are part of comprehensive guidelines and establish permitted levels of RF energy for the general population. The guidelines are based on standards that were developed by independent scientific organizations through periodic and thorough evaluation of scientific studies.

The exposure standard for wireless mobile phones employs a unit of measurement known as the Specific Absorption Rate (SAR). The SAR limit set by the FCC and IC is 1.6 W/kg. Tests for SAR are conducted using standard operating positions as accepted by the FCC and IC with the phone transmitting at its highest certified power level in all tested frequency bands. Although the SAR is determined at the highest certified power level, the actual SAR level of the phone while operating can be well below the maximum value. This is because the phone is designed to operate at multiple power levels so as to use only the power required to reach the network. In general, the closer you are to a wireless base station antenna, the lower the power output level of the phone.

Before a phone model is available for sale to the public, it must be tested and certified to prove to the FCC and IC that it does not exceed the limit established by the U.S. and Canadian government-adopted requirement for safe exposure. The tests are performed on position and locations (for example, at the ear and worn on the body) as required by FCC and IC for each model. The highest SAR value for this model phone as reported to the FCC and IC, when tested for use at the ear, is 0.362 W/kg, and when worn on the body, is 0.339 W/kg. (Body-worn measurements differ among phone models, depending upon available accessories and FCC and IC requirements).

While there may be differences between the SAR levels of various phones and at various positions, they all meet the U.S. and Canadian government requirements. The FCC and IC has granted an Equipment Authorization for this model phone with all reported SAR levels evaluated as in compliance with the FCC and IC RF exposure guidelines. SAR information on this model phone is on file with the FCC and can be found under the Equipment Authorization Search section at <http://www.fcc.gov/oet/> (please search on FCC ID VQK-F-01A).

For body worn operation, this phone has been tested and meets the FCC and IC RF exposure guidelines when used with an accessory designated for this product or when used with an accessory that contains no metal and which positions the handset at a minimum distance of 1.5 cm from the body.

\* In the United States and Canada, the SAR limit for wireless mobile phones used by the general public is 1.6 Watts/kg (W/kg), averaged over one gram of tissue. SAR values may vary depending upon national reporting requirements and the network band.

### ◆ Important Safety Information

#### **AIRCRAFT**

Switch off your wireless device when boarding an aircraft or whenever you are instructed to do so by airline staff. If your device offers flight mode or similar feature consult airline staff as to whether it can be used on board.

#### **DRIVING**

Full attention should be given to driving at all times and local laws and regulations restricting the use of wireless devices while driving must be observed.

#### **HOSPITALS**

Mobile phones should be switched off wherever you are requested to do so in hospitals, clinics or health care facilities. These requests are designed to prevent possible interference with sensitive medical equipment.

#### **PETROL STATIONS**

Obey all posted signs with respect to the use of wireless devices or other radio equipment in locations with flammable material and chemicals. Switch off your wireless device whenever you are instructed to do so by authorized staff.

#### **INTERFERENCE**

Care must be taken when using the phone in close proximity to personal medical devices, such as pacemakers and hearing aids.

#### **Pacemakers**

Pacemaker manufacturers recommend that a minimum separation of 15 cm be maintained between a mobile phone and a pace maker to avoid potential interference with the pacemaker. To achieve this use the phone on the opposite ear to your pacemaker and does not carry it in a breast pocket.

#### **Hearing Aids**

Some digital wireless phones may interfere with some hearing aids. In the event of such interference, you may want to consult your hearing aid manufacturer to discuss alternatives.

#### **For other Medical Devices :**

Please consult your physician and the device manufacturer to determine if operation of your phone may interfere with the operation of your medical device.

### Intellectual property rights

#### ◆ Copyrights and portrait rights

Except for the case protected by copyright laws such as personal use, use of FOMA terminal to reproduce, alter, or publicly transmit recorded pictures or sounds, or copyrighted text, images, music or software downloaded from websites without the copyright holder's authorization is prohibited.

Note that taking photos or recordings at some demonstrations, performances or exhibitions may be prohibited even when only for personal use.

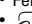


Avoid taking pictures of others with FOMA terminal without their consent or disclosing recorded pictures of others without their consent to general public through Internet websites etc., because they may infringe on portrait rights.

## ◆ Trademarks

Company and product names mentioned in this manual are trademarks or registered trademarks of their respective holders.

- "FOMA", "mova", "i-motion", "i-mode", "i-αpli", "i-motion mail", "i-shot", "DoPa", "mopera", "mopera U", "WORLD CALL", "WORLD WING", "Chaku-motion (Movie ringtone)", "Deco-mail", "V-live", "i-area", "Chara-den", "i-αpliDX", "i-Channel", "Dual Network", "FirstPass", "sigmarion", "Security Scan", "musea", "Public mode", "PushTalk", "PushTalkPlus", "ToruCa", "MessageF", "iD", "2in1", "DCMX", "OFFICEED", "IMCS", "Chokkan Game" and logos of "FOMA", "i-mode", "i-αpli", "Music&Video Channel", "DCMX", "iD" and "HIGH-SPEED" are trademarks or registered trademarks of NTT DOCOMO.
- Microsoft®, Windows®, Windows Vista®, Windows Media® and PowerPoint® are trademarks or registered trademarks of "Microsoft Corporation" in the US and other countries.
- Microsoft Excel and Microsoft Word are product names of Microsoft Corporation in the U.S.A. In this manual, they may be described as Excel and Word.
- "Multitask" is a registered trademark of NEC Corporation.
- "Catch Phone (Call waiting service)" is a registered trademark of Nippon Telegraph and Telephone Corporation.
- Free Dial logo mark is a registered trademark of NTT Communications Corporation.
- Java and all Java-related trademarks and logos are trademarks or registered trademarks of Sun Microsystems, Inc. in the US and other countries.
- This product contains NetFront Browser, NetFront Sync Client of ACCESS CO., LTD. ACCESS and NetFront are trademarks or registered trademarks of ACCESS CO., LTD. in Japan, US and other countries. Copyright© 2008 ACCESS CO., LTD. All rights reserved.

**NetFront**

- Powered by JBlend™ Copyright 2002-2008 Aplix Corporation. All rights reserved. JBlend and JBlend-related trademarks are trademarks or registered trademarks of Aplix Corporation in Japan and other countries.
- This product contains Adobe® Flash® Lite™ and Adobe Reader® LE technology of Adobe Systems Incorporated. Adobe Flash Lite Copyright© 2003-2008 Adobe Systems Incorporated. All rights reserved. Adobe Reader LE Copyright© 1993-2007 Adobe Systems Incorporated. All rights reserved. Adobe, Adobe Reader, Flash and Flash Lite are either registered trademarks or trademarks of Adobe Systems Incorporated in the United States and/or other countries.
- FlashFX® Pro™ is a registered trademark of DATALIGHT, Inc. FlashFX® Copyright 1998-2008 DATALIGHT, Inc. U.S.Patent Office 5,860,082/6,260,156
- QR code is a registered trademark of Denso Wave Inc.
- microSDHC Logo is a trademark.
- FeliCa is a registered trademark of Sony Corporation.
-  is a registered trademark of FeliCa Networks, Inc.
- Word, Excel and PowerPoint file display technologies are powered by Pictel Technologies.  Pictel, Pictel File Viewer and the Pictel cube logo are trademarks or registered trademarks of Pictel Technologies, Pictel File Viewer.
- McAfee® is registered trademarks or trademarks of McAfee, Inc. and/or its affiliates in the US and/or other countries.
- G-GUIDE, G-GUIDE MOBILE and their logos are registered trademarks in Japan of U.S. Gemstar-TV Guide International, Inc. and/or its affiliates. 
- QuickTime is a registered trademark of Apple Inc. in the US and other countries.
- ATOK + APOT of Justsystem Corporation is installed in this product as Japanese character conversion function. "ATOK" ("APOT (Advanced Prediction Optimization Technology)") are registered trademarks of Justsystem Corporation.
- This product contains software licensed by Symbian Software Ltd © 1998-2008. **symbian** and Symbian OS are trademarks of Symbian Ltd.
- "Round Gothic", "Ryumin" and "Round Fork" are provided by Morisawa&Company Ltd., and these names are their trademarks or registered trademarks, and the copyrights of these font data belong to them.
- "Privacy mode" is a registered trademark of FUJITSU LIMITED.



- Bluetooth® and its logo are registered trademarks of Bluetooth SIG, Inc., and NTT DOCOMO uses them under license. Other trademarks and names inhere to their respective owners.
- Napster is a registered trademark of Napster, LLC. and/or its affiliates in the US and/or other countries.
- Google is registered trademark of Google Inc.
- "日英版しゃべって翻訳 for F (J-E Speech Translation for F)" and "日中版しゃべって翻訳 for F (J-C Speech Translation for F)" are trademarks of ATR-Trek.
- i アバター™ (i-avatar) is a registered trademark of D2 Communications Inc, and BANDAI NETWORKS CO.,LTD.
- Other company and product names mentioned in this manual are trademarks or registered trademarks of their respective holders.
- The abbreviations of operating systems (Japanese versions) below are used in this manual.
  - Windows Vista stands for Windows Vista® (Home Basic, Home Premium, Business, Enterprise and Ultimate).
  - Windows XP indicates the Microsoft® Windows® XP Professional operating system or Microsoft® Windows® XP Home Edition operating system.
  - Windows 2000 indicates the Microsoft® Windows® 2000 Professional operating system.

#### ◆ Others

- FeliCa is a contactless IC card technology developed by Sony Corporation.
- This product contains a module developed by the Independent JPEG Group.
- This product is equipped with the technologies of GestureTek, Inc. Copyright© 2006-2008, GestureTek, Inc. All Rights Reserved.
- "学研モバイル国語辞典 (Gakken Mobile JpnDic)", "学研モバイル英辞典 (Gakken Mobile JE Dic)", "学研モバイル英和辞典 (Gakken Mobile EJ Dic)", "今日は何の日 (Today's trivia)" and "今日の歴史 (Today in history)" are copyrighted by GAKKEN CO., LTD.

- This product is licensed based on MPEG-4 Visual Patent Portfolio License. The use of MPEG-4 Video Codec function is allowed for personal and nonprofit use only in the cases below.
  - Recording movies and i-motion that conform to MPEG-4 Visual Standard (hereinafter referred to as MPEG-4 Video)
  - Playing MPEG-4 Videos recorded personally by consumers not engaged in profit activities
  - Playing MPEG-4 Video supplied from the provider licensed from MPEG-LA
    - For further utilizing such as promotion, in-house use or profit-making business, please contact MPEG LA, LLC in U.S.
- Licensed by QUALCOMM Incorporated under one or more of the following United States Patents and/or their counterparts in other nations;
 

4,901,307	5,504,773	5,109,390	5,535,239	5,267,262	5,600,754	5,416,797
5,490,165	5,101,501	5,511,073	5,267,261	5,568,483	5,414,796	5,659,569
5,056,109	5,506,865	5,228,054	5,544,196	5,337,338	5,657,420	5,710,784
5,778,338						
- Content owners use Windows Media digital rights management technology (WMDRM) to protect their intellectual property, including copyrights. This device uses WMDRM software to access WMDRM-protected content. If the WMDRM software fails to protect the content, content owners may ask Microsoft to revoke the software's ability to use WMDRM to play or copy protected content. Revocation does not affect unprotected content. When downloading licenses for protected content, you agree that Microsoft may include a "Revocation List" with the licenses. Content owners may require you to upgrade WMDRM to access their content. If you decline an upgrade, you cannot access a content that requires the upgrade.