

Handling precautions

◆ General

- F-02A is waterproof, however, do not allow water to seep into the handset and do not allow accessories or optional devices to get wet.
 - This FOMA terminal is waterproof to IPX5 and IPX7 standards if the external connection jack cap is strictly closed as well as the back cover is mounted and locked, however, it is not completely waterproof. In the rain or with the handset wet, do not remove/insert the battery pack or open/close the external connection jack cap or the back cover. Seeped water may cause corrosion inside the terminal. Accessories and optional devices are not waterproof. Malfunctions deemed to have been caused by water are not covered by the warranty. Since these conditions are outside the scope of the warranty, a repair, if at all possible, is charged.
- Clean FOMA terminal with a dry soft cloth (such as a cloth for eyeglasses).
 - The display of FOMA terminal may have been applied special coating to improve clearness of the color LCD. When cleaning FOMA terminal, rubbing it roughly with a dry cloth can scratch the display. Take care when handling the unit, and clean it with a dry soft cloth (such as a cloth for eyeglasses). Drops of water or dirt left on the display can cause stains or remove the coating.
 - If FOMA terminal is wiped with alcohol, paint thinner, benzene or detergent, the printing may disappear or color may fade.
- Clean the jack occasionally with a dry cotton swab.
 - If the jack is dirty, the contact may become poor and the power may shut OFF. A dirty jack can result in poor charging, so clean it with a dry cloth or cotton swab.
- Do not place FOMA terminal near an air-conditioner outlet.
 - The rapid change in temperature may cause condensation, causing internal corrosion and malfunction.
- When using, be careful not to subject excessive force to FOMA terminal or the battery.
 - If FOMA terminal is crammed into a brimming bag or placed in a pocket and sat on, display, internal PCBs or battery pack may be damaged or malfunction. And, if external devices are plugged into the external connection jack (earphone/microphone jack), the breakage of the connector or malfunction may result.
- Carefully read the separate instructions that come with FOMA terminal, adapter (including battery charger) and desktop holder.
- Do not rub or scrape the display with a metal piece etc.
 - It may scratch the display, causing malfunction or damage.

- Do not press the surface of the touch panel strongly or operate it with sharp objects such as a nail, a ballpoint pen and a pin.
 - It may damage the touch panel.

◆ FOMA terminal

- Avoid extreme temperature.
 - Use the FOMA terminal where the ambient temperature ranges between 5 and 40°C (for temperatures of 36°C or higher, such as in a room with a bath, limit usage to a short period of time) and the ambient humidity ranges between 45 and 85%.
- FOMA terminal may affect land-line phones, TVs or radios in use nearby, so use it as far as possible from these appliances.
- Maintain a separate record of the data you saved in your FOMA terminal.
 - If the data is deleted, DOCOMO assumes no responsibility for the loss of any data.
- Do not plug external devices into the external connection jack (earphone/microphone jack) at a slant, or do not pull it forcibly while it is plugged.
 - May cause malfunction or damage.
- Do not fold FOMA terminal with the strap held inside.
 - May cause malfunction or damage.
- It is normal for FOMA terminal to become warm during use or charging. Continue to use it.
- Do not leave FOMA terminal with the camera in areas under strong direct sunlight.
 - May cause discoloring or burn-in of materials.
- The terminal should normally be used with the external connection jack cap closed.
 - Dust and/or water brought into FOMA terminal cause troubles.
- Do not use FOMA terminal with the back cover removed.
 - It may cause the battery to come off, or may cause a malfunction or damage.
- Do not put an extremely thick sticker etc. on the display or keypad.
 - May cause malfunction.
- Do not turn FOMA terminal OFF while using microSD card.
 - It may cause data loss or malfunction.

◆ Battery pack

- The battery pack is a consumable part.

- Replace the battery pack if FOMA terminal has extremely short operation time on a full charge, though it may vary by operating conditions. Purchase a new battery pack of the specified type.
- Charge the battery in an area within the proper ambient temperature range (5-35 °C).
- Always charge before using it for the first time or after extended disuse.
- The operation time provided by the battery pack varies by the operating environment and battery pack's deterioration.
- The battery pack may swell out as it comes to near the end of its lifetime depending on the usage conditions, but it is not a problem.
- Do not preserve or leave the battery pack as it is empty.
 - It may cause the battery pack performance to be degraded or its lifetime to be shortened.

◆ Adapter (including battery charger)

- Charge the battery in an area within the proper ambient temperature range (5-35 °C).
- Do not charge the battery in the areas below.
 - In areas of excessive humidity, dust or vibrations
 - Near land-line phones or TVs/radios
- It is normal for the adapter (including battery charger) to become warm while charging. Continue to use it.
- When using the DC adapter for charging, keep the vehicle engine running.
 - The vehicle's battery could become flat.
- When using an outlet with a mechanism preventing unplugging, follow the handling instructions for that outlet.
- Do not give strong shock. Do not deform the charging jack.
 - May cause malfunction.
- When folding the desktop holder, take care to avoid catching your fingers or adapter cables (including the charger cord) in the holder.
 - May cause injuries or damage.

◆ UIM

- Do not use excessive force to install/remove UIM.
- It is normal for UIM to become warm during use. Continue to use it.
- Note that DOCOMO assumes no responsibility for malfunctions occurring as the result of inserting and using a UIM with another IC card reader/writer.
- Always keep UIM ICs clean.
- Clean UIM with a soft, dry cloth (such as a cloth for eyeglasses).
- Maintain a separate record of the data you saved in UIM.
 - If the data is deleted, DOCOMO assumes no responsibility for the loss of any data.
- To preserve the environment, bring the old UIM to a sales outlet such as DOCOMO Shop.
- Avoid extreme temperature.
- Take care not to scratch, touch accidentally or short IC.
 - May cause data loss or malfunction.
- Do not drop UIM or subject it to shocks.
 - May cause malfunction.
- Do not bend UIM or place heavy objects on it.
 - May cause malfunction.
- Do not install UIM into FOMA terminal with a label or sticker put on UIM.
 - May cause malfunction.

◆ FeliCa reader/writer

- FeliCa reader/writer function of FOMA terminal uses weak waves requiring no licenses for radio stations.
- It uses 13.56 MHz frequency band. When using other reader/writers in your surroundings, keep FOMA terminal away sufficiently from them. Before using the FeliCa reader/writer, confirm that there are no radio stations using the same frequency band nearby.

◆ CAUTION

- Do not use a remodeled FOMA terminal. Using a remodeled terminal violates the Radio Law.

FOMA terminal is certified according to technical standard conformance of specified wireless equipment based on the Radio Law, and as a proof of it, the "Technical Compliance Mark" is depicted on the engraved sticker of FOMA terminal.

If you remodel FOMA terminal by removing its screws, your certification of technical standard conformance becomes invalid.

Do not use FOMA terminal with its certification of technical standard conformance invalid as it violates the Radio Law.

- Be careful when you use FOMA terminal while driving a car etc. Using a mobile phone while driving is subject to penal regulations. If you inevitably receive a call, tell the caller that you will "call back" by handsfree, then park in a safe place and call back.
- Use FeliCa reader/writer function only in Japan. FeliCa reader/writer function of FOMA terminal conforms to Japanese radio standards. If you use this function overseas, you may be punished.

Waterproofness

F-02A is waterproof to IPX5 (former JIS protection code 5)*¹ and IPX7 (former JIS protection code 7)*² standards if the external connection jack cap is strictly closed as well as the back cover is mounted and locked.

- *1 IPX5 means that F-02A phone keeps functioning after directly applying a jet flow of 12.5 L/min. for at least 3 minutes from a distance of 2.5-3 m on a rotating turntable.
- *2 IPX7 means that F-02A phone keeps functioning after it is slowly submerged to depth of 1 m in static tap water at room temperature, left there for 30 minutes and then taken out.

◆ Advantages in actual operation

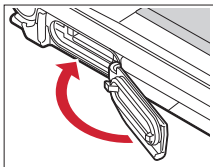
- You can talk or watch 1Seg programs without using an umbrella in the rain (for rainfall of 20 mm or less per hour).
 - When your hands or FOMA terminal are wet, avoid installing/removing the back cover or opening/closing the external connection jack cap.
- You can wash the FOMA terminal by submerging and moving it forth and back in still water in a basin etc.
 - When washing, use only your hands, not a brush or sponge, with FOMA terminal locked, the back cover installed and the external connection jack cap held in position.
- You can use the FOMA terminal in a poolside area. Do not put the terminal in the water of a swimming pool.
 - If FOMA terminal gets wet with water from the swimming pool, wash it as described above.
 - Do not use FOMA terminal underwater. May cause malfunction.
- You can use FOMA terminal in a bathroom. Do not put the terminal in the bathtub.
 - Never put FOMA terminal in hot spring water or water containing soap, detergent or bath powder.
 - Do not use FOMA terminal underwater. May cause malfunction.

◆ Important precautions

To keep the FOMA terminal waterproof, be sure to observe the points below.

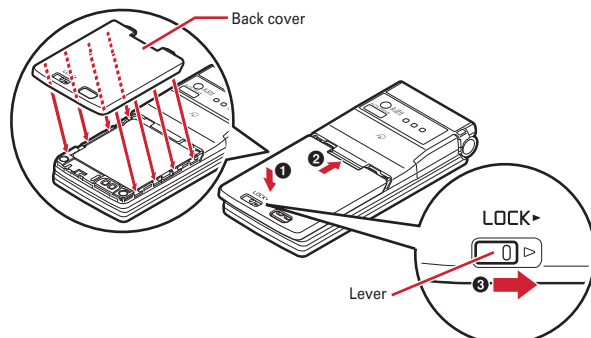
- Securely close the external connection jack cap and back cover.
- Make sure that the cap and back cover are completely closed without floating.
- Before using, make sure that the back cover lever is at the LOCK position.

■ Closing external connection jack cap



■ Installing back cover

Align 8 tabs of the back cover with concaves of FOMA terminal. While pressing the back cover in the direction of ① so that there is no gap between FOMA terminal and back cover, slide the back cover in the direction of ② to install, then slide the back cover lever in the direction of ③ to lock.



- Do not use FOMA terminal underwater (including opening/closing and keypad operations).

- Do not let FOMA terminal get wet with liquids other than water at room temperature.

<Example>



Soap/Detergent/Bath powder



Ocean water



Swimming pool



Hot spring



Sand/Mud

To keep the FOMA terminal waterproof, replacement of parts is required every 2 years regardless of whether FOMA terminal appears normal or abnormal. DOCOMO replaces the parts as a chargeable service. Bring FOMA terminal to a sales outlet such as a DOCOMO Shop.

◆ Precautions

- Securely lock the back cover and firmly close the external connection jack cap. Even a fine obstacle (one hair, one grain of sand, tiny fiber, etc.) put between contact surfaces may allow water to enter.
- If FOMA terminal gets wet with water or other liquids with the external connection jack cap or back cover open, the liquid may get inside the terminal causing electric shocks or malfunction. Stop using FOMA terminal, turn the power OFF, remove the battery pack and contact a DOCOMO-specified repair office.
- The external connection jack cap and the rubber packing of the inner lid play an important role for keeping waterproof. Do not remove or scratch them. Also, prevent dust from adhering to them.
- Do not leave water on FOMA terminal. In a cold region, water may freeze causing malfunction.

- Do not apply water flow stronger than allowed (e.g., such water flow that gives you pain when applied to your skin directly from a faucet or shower). May cause malfunction though F-02A provides waterproof performance of IPX5.
- Do not wash FOMA terminal in a washing machine etc.
- Accessories and optional devices are not waterproof.
When watching 1Seg etc. with FOMA terminal installed in the desktop holder, do not use it in a bath room, shower room, kitchen or lavatory even if it is not connected to the AC adapter.
- Do not put FOMA terminal in hot water, use it in a sauna or apply hot airflow (from a hair dryer etc.) to it.
- Never try to charge the battery pack when FOMA terminal is wet.
- Do not poke the microphone, earpiece or speaker with a swab or sharp object. May damage the waterproof performance.
- Do not leave FOMA terminal wet. May short-circuit the power jacks.
- FOMA terminal does not float on water.
- Do not let FOMA terminal fall. It may become scratched causing the waterproof performance to degrade.
- If the back cover is damaged, replace it. Water may enter inside from a damaged section causing troubles such as electric shocks or corrosion of the battery.
- Do not leave water on the microphone, earpiece or speaker. Such water may interfere with talking.

DOCOMO does not guarantee actual operations under all states. Malfunctions deemed to be caused by inappropriate operation by the customer are not covered by the warranty.

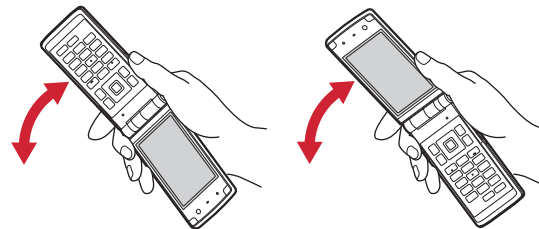
◆ Draining water when the FOMA terminal gets wet

When FOMA terminal is wet, water may flow out after wiping it off; drain the water following the steps below.

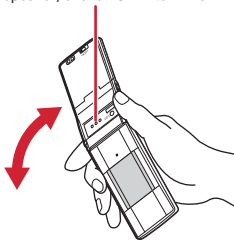
- ① Wipe FOMA terminal surface with dry, clean cloth etc.



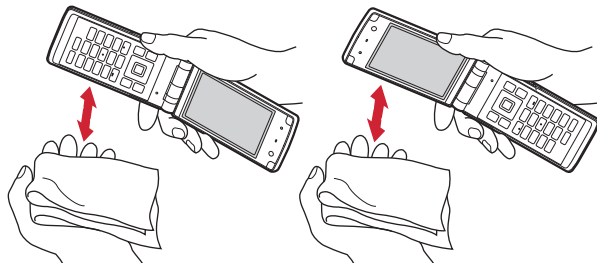
- ② Shake FOMA terminal approximately 20 times, firmly holding its hinge section, until there is no more water splattering.



To drain water off the speaker, shake FOMA terminal with the speaker upward



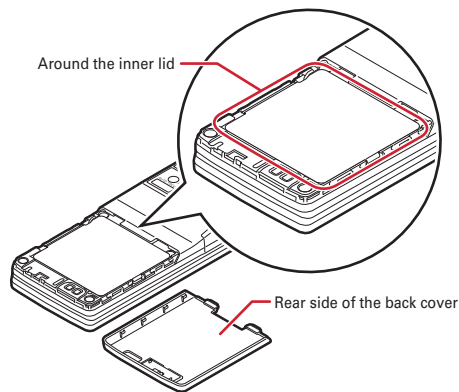
- ③ Softly press dry, clean cloth etc., against FOMA terminal to wipe off water remaining in the microphone, earpiece, speaker, keys or hinges.



- ④ Remove the back cover and wipe off any drops of water around the inner lid and the rear side of the back cover. After wiping off the water, install and lock the back cover.

Removing back cover → P42 ■ Attaching ① in "Attaching/Removing battery pack"

* Never open the inner lid.



- ⑤ Wipe off water drained from FOMA terminal with dry, clean cloth etc.

* Water, if any, remaining in FOMA terminal may ooze up after wiping off.

* Do not wipe off water remaining in concaves directly with a cotton swab etc.

◆ Charging

Accessories and optional devices are not waterproof. Check the following before and after charging.

- Check that FOMA terminal is not wet. If wet, adequately drain FOMA terminal and wipe off water with dry, clean cloth etc. before connecting a desktop holder or opening the external connection jack cap.
- When charging the battery after FOMA terminal is wet, adequately drain it and wipe off water with a dry, clean cloth etc., before connecting a desktop holder or opening the external connection jack cap.
- When the external connection jack cap is opened for charging, close the cap firmly after charging.

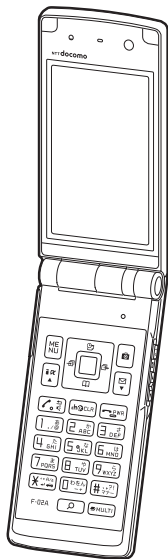
It is recommended that the desktop holder be used for charging to prevent water from seeping inside from the external connection jack.

- * Never try to charge the battery pack when FOMA terminal is wet.
- * Do not touch the AC adapter or desktop holder with wet hands. May cause electric shock.
- * Do not use the AC adapter or desktop holder in a place subject to water. May cause fire or electric shock.
- * Do not use the AC adapter or desktop holder in a bathroom, kitchen, lavatory or other highly humid area. May cause fire or electric shock.

Accessories and main options

<Basic package>

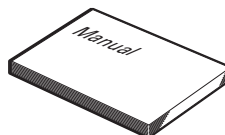
F-02A
(including Back Cover F34 and the written warranty)



Battery Pack F09

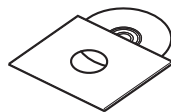


Instruction manual



* Quick Manual is appended on PXXX.

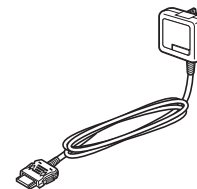
CD-ROM for F-02A



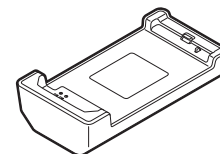
* The PDF version of "Manual for PC Connection" and "Kuten Code List" are contained in the CD-ROM.

<Optional accessories>

FOMA AC Adapter 01/02
(including written warranty and operation manual)



Desktop Holder F28
(including operation manual)

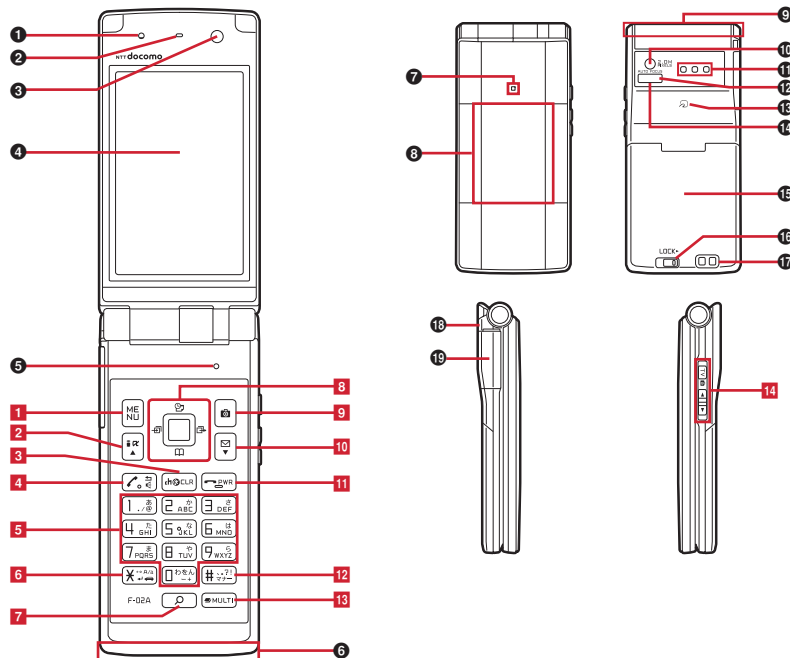


Other optional accessories → P383

Before Using the Handset

Part names and functions	26
Viewing display	29
Sub-display/Light overview	32
Selecting functions from menu	35
Using motion sensor	38
Using UIM (FOMA card)	39
Attaching/Removing battery pack	42
Charging	43
Checking battery level	Remaining battery level 46
Turning power ON/OFF	Power ON/OFF 47
Changing screen display to English	Select language 48
Setting date and time	Date & time 48
Notifying the other party of your phone number	Caller ID notification 49
Checking your own phone number	User information 50

Part names and functions



<Functions of parts>

1 Light sensor

Sense the ambient luminance (automatic adjustment of the brightness of the display).

* Blocking the light sensor may disable correct adjustment of the brightness.

2 Earpiece

Hear other party's voice from here.

3 In-camera

Shoot your own image, send your image via a videophone call

4 Display → P29

5 Microphone

Send your voice from here.

* Do not cover with your finger while talking or recording sound.

6 1Seg antenna → P205

* The terminal has a built-in 1Seg antenna. For better signal reception, do not cover the antenna with your hand.

7 Light → P95

Turn on or blink when activating Lock on close or Auto keypad lock, shooting an image, recording a movie, operating Music&Video Channel player or MUSIC Player, and it operates according to the settings of Indicator light or Light alert.

8 Sub-display → P32

9 FOMA Built-in antenna

* The terminal has a built-in FOMA antenna. For better voice quality, do not cover the antenna with your hand.

10 Out-camera

Shoot still images or movies, send images over a videophone call.

11 Speaker

Hear ring alert or voice of the caller using the speakerphone etc. from here.



Viewing display

The current state can be checked by the icon appearing on the screen.


-
- ①-⑬
- ① : Battery icon→P46
- ② : Signal level icon→P47
- ☎外 : Out of service area→P103
- SELF : Self mode ON→P103
- Ⓜ : Data transfer mode ON^{*1}→P109, 280, 290
- ③ : In i-mode (during i-mode connection)/(during packet communication)→P160
- ④ : In infrared communication→P290
- 📡 : Infrared remote control in operation→P294
- ¥ : The total calls cost exceeds the limit→P312
- ⑭
- ⑮-⑳


- ^{*2}
- ⑤ : Communication using handsfree-compatible device in progress→P60
- 🔊 : Speakerphone function in use→P53
- 🔋 : Power saving mode activated→P91
- 📶 (blue)/📶 (red) : Network state→P342
- ⑥ : High-pitched alarm is set to "ON"→P300
- ⑦ : A phonebook entry or schedule has secret attribute→P78, 305
- ^{*2}
- ⑧ Unread Air Mail, unread mail, MessageR/F state→P129, 147, 149, 154
- ✉ : Unread Area Mail
- 📧 : Unread i-mode mail and SMS storage space is full on UIM
- 📧 : Unread i-mode mail and SMS storage space is full
- 📧 : SMS storage space is full on UIM
- 📧 : Unread i-mode mail and SMS exist
- ✉ : Unread i-mode mail exists
- ✉ : Unread SMS exists
- 📧 (red)/📧 (blue) : Unread MessageR storage space is full or unread MessageR exists
- 📧 (red)/📧 (green) : Unread MessageF storage space is full or unread MessageF exists
- ^{*2}
- ⑨ Storage state in i-mode Center→129, 147
- 📧 : i-mode mail and MessageR/F storage are full or one of these spaces is full and unreceived mails exist in Data Center
- 📧 / 📧 / 📧 : i-mode mail or MessageR/F storage space is full in Data Center
- 📧 : Unreceiving i-mode mail and MessageR/F exist in Data Center



- 📧 / 📧 / 📧 : Unreceiving i-mode mail, MessageR or MessageF exists in Data Center
- ^{*2}
- ⑩ SSL : Displaying SSL page/Executing SSL session with i-appli or using i-appli downloaded from SSL page→P161
- 📧 : Displaying an SSL/TLS page→P180
- 📧 : Mail failed to Auto-send exists→P128
- 📧 : Auto-send mail exists→P128
- 📧 : Music&Video Channel program obtaining reservation exists→P219
- ⑪ i-appli/i-appliDX state→P233, 252
- 🔍 : During i-appli operation
- 📧 (gray) : i-appli stand-by display ON
- 📧 (orange) : i-appli is being started from the i-appli stand-by display
- 🔍 : i-appliDX is running
- 📧 (gray) : i-appliDX stand-by display ON
- 📧 (orange) : i-appli is being started from the i-appliDX stand-by display
- ^{*3}
- ⑫ : Performing 1Seg recording reservation/1Seg recording (only watching stopped)→P211, 213
- 🔍 : i-appli Auto start failed→P251
- ^{*3}
- ⑬ OFFICEED : Inside OFFICEED area→P337
- ⑭ : Arrival information→P37
- 📧 : Shortcut icons→P305
- ⑮ : Silent mode ON→P84
- 📧 : Personalized silent mode ON→P85
- ⑯ : Call alert volume is Silent→P82
- 📧 : Vibrator for voice call ON→P82
- 📧 : Call alert volume is Silent and vibrator for voice call ON→P82
- ⑰ : In Public mode (Drive mode)→P63


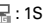
18  /  : Answer machine ON/recorded messages full→P64


^{*2} 19  : Keypad dial lock ON→P105


 : Side key hold ON→P110

^{*2} 20  : Personal data lock ON→P104

 /  : Music&Video Channel obtaining failure/success→P219

 /  : 1Seg recording reservation completed/failed→P213

^{*2} 21  : Reading UIM→P39, 47

 (key is yellow) : IC card lock ON→P258

 : Individual IC card lock→P258

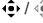
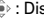
*1 When data transfer mode is activated, the terminal is in the same state as out of service area and Multitask becomes unavailable.


*2 The current highest-priority item is displayed. These icons are listed in descending order of the priority from the top.


*3 Time appears on a screen other than the stand-by display.


✓ INFORMATION


- Depending on the displayed function, an icon may be displayed at a different position, or some or all icons may not be displayed.


22  /  : Displaying available multi-cursor key in Focus mode→P37


 : Lock on close/Auto keypad lock ON→P110



23  : Alarm clock ON→P299



 : 1Seg watching/recording reservation, schedule reminder ON→P212, 302

 : Schedule reminder or 1Seg watching/recording reservation and alarm clock are simultaneously ON→P212, 299, 302

24  : State of USB mode settings and microSD card→P280, 285

 : microSD card installed during Communication mode

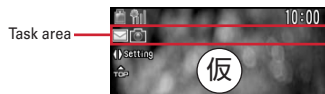
 (blue) /  (gray) : microSD card installed or not during microSD mode

 (blue) /  (gray) : microSD card installed or not during MTP mode



◆ Task area

The icon indicating the function (task) in progress appears in the task area. During Multiaccess or Multitasks, the icons show which functions are running.



❖ Icons indicated on the task area

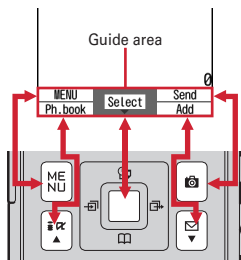
- : Voice call
- : Received calls
- : Redial
- : Answer machine/Voice memo
- : Videophone call
- : Videophone using an external device
- : Call (switching)
- : Call (disconnecting)
- : FOMA terminal phonebook
- : Contact setting of Privacy mode
- : Kisekai Tool
- : Still camera
- : Movie camera
- : Bar code reader
- : i-mode
- : i-mode Bookmark/Go to location/Browser history/Screen memo/two-touch site
- : Mail/MessageR/F
- : Area Mail
- : Receiving i-mode mail
- : Inquiring for i-mode mail/SMS
- : Sent msg log/Received msg log
- : Chat mail
- : Receiving SMS
- : i-appli
- : ToruCa
- : Full Browser
- : 1Seg
- : My Picture

- : Movie/i-motion
- : Chara-den
- : Melody
- (blue) / (gray) : Accessing microSD card/Standing by for accessing
- : Activating Music&Video Channel
- : Music&Video Channel program obtaining
- : MUSIC Player
- : Sound recorder
- : Adjusting volume by Multitask
- : Countdown timer
- : Alarm clock
- : High-pitched alarm
- : Scheduler/Schedule reminder ringing (including activation notification of 1Seg)
- : Fake call
- : Toy's world
- : User information
- : Calculator
- : Pedometer
- : Search engine
- : Notepad
- : Dictionaries
- : Accessing Data Center
- : Displaying synchronization log
- : Network services set
- : Calling or communicating packets via USB/Sending or receiving packets via USB
- : 64K data communication
- : Accessing external data
- : Updating software/Software update notified
- : Updating pattern definition/Displaying version
- : Each function set or on hold

◆ Guide area

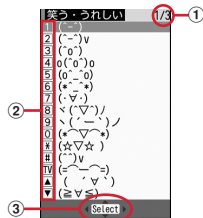
Operations that can be performed by pressing **[MENU]**, **[Ph. book]**, **[Select]**, **[Send Add]** and **[Send Add]** are displayed in the guide area. Displayed operations vary by the screen.

Display locations and keys correspond as shown in the figure.



- **[Select]** on the guide area corresponds to multi-cursor keys **[Select]** (It may be different depending on the function you are using or how the site or website is made).

◆ List screen



- ① When a list extends to multiple pages, the currently displayed page number and the total number of pages appear.

- ② Pressing the keypads corresponding to the item number or pressing the keys below allows you to select an item.



- ③ **[Up]** indicates that there are items that can be selected above and below the cursor position. Press **[Up]** to move the cursor. When **[Up]** is pressed on the last item of the page, the next page appears, when **[Down]** is pressed on the first item of the page, the previous page appears.

◀ ▶ indicates that there are items that can be selected over the multiple pages. Press **[Page]** to change the page. Some screens such as an icon selection screen cannot be switched.

Sub-display/Light overview

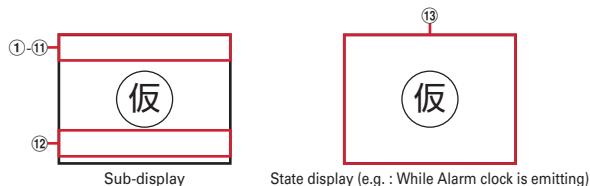
With sub-display or light of FOMA terminal, various information or states can be checked. **Playing video recorded by 1Seg, shooting still images or recording movies are also available.**

◆ Displaying sub-display

When FOMA terminal is folded, the sub-display shows the stand-by display or messages.

- Folding FOMA terminal displays Open/Close animation. When the animation stops, the sub-display light turns off. When Motion sensor is "ON", double-tapping on the front or back side of FOMA terminal while the animation is displayed also turns off the light.
- When the sub-display light is turned off, pressing **[TV]** turns on the light and the sub stand-by screen appears. Animated arrival image appears when a missed call or unread mail exists. When S-disp auto light on of Sub-display is set to "ON", the light automatically turns on by picking up or tilting FOMA terminal.
- When opening FOMA terminal with information displayed on the sub-display, the information disappears.
- In All lock, Omakase Lock or Side key hold, pressing **[TV]** or **[Ph. book]** shows a message indicating the lock is set, and after a period of time, the sub stand-by screen appears.

◆ Icons and states indicated on the sub stand-by screen



- ① 🔋 : Battery icon
- ② 📶 : Signal level icon
- ③ 圏外 : Out of service area
- ④ SELF : Self mode ON
- ⑤ 🔄 : In data transfer
- ⑥ 📶 / 📶 : In i-mode communication (i-mode site)/(packet communication)
- ⑦ 📞 / 📞 : Silent mode ON/Personalized silent mode ON
- ⑧ 📞 : During 1Seg recording reservation
- ⑨ 📶 : IC card lock ON
- ⑩ 📶 : Lock on close/Auto-keypad lock ON
- ⑪ 📶 : i-mode mail or MessageR/F storage space is full in Data Center
- ⑫ 📶 : i-mode mail or MessageR/F exists in Data Center
- ⑬ 📶 : Mail failed to Auto-send exists
- ⑭ 📶 : Auto-send mail exists
- ⑮ 📶 : Pedometer ON
- ⑯ 📶 : Unread Area Mail exists
- ⑰ 📶 : Unread i-mode mail or SMS is full, and SMS storage space is full in UIM
- ⑱ 📶 : Unread i-mode mail or SMS storage space is full
- ⑲ 📶 : SMS storage space is full in UIM
- ⑳ 📶 : Unread i-mode mail and SMS exist
- ㉑ 📶 (red)/ 📶 (blue) : Unread MessageR storage space is full or unread MessageR exists
- ㉒ 📶 (red)/ 📶 (green) : Unread MessageF storage space is full or unread MessageF exists
- ㉓ 📶 : High-pitched alarm is set to "ON"

- 12 📶 : Missed calls exist (with 2in1 in Dual mode, 📶 appears when there is a missed call only to Number B and 📶 appears when there are missed calls to both Number A and B)
- 📶 : Recorded messages exist
- 📶 : Voice messages in Voice Mail service exist (with 2in1 in Dual mode, 📶 appears when there is a voice message only to Number B and 📶 appears when there are voice messages to both Number A and B)
- 📶 : Unread mail exists
- 📶 : Unread ToruCa exists
- 13 The states below are notified by message or image.
 - Status display of a voice call, videophone call (including Chaku-moji and voice messages in Voice Mail service) and recorded message
 - While checking/receiving i-mode mail, SMS or Message R/F, or receiving Area Mail
 - While watching /recording 1Seg, playing a melody, using Music&Video Channel player, using Music player or using the microSD card
 - While alarm clock or schedule reminder (including activation notification of 1Seg) is sounding, Countdown timer is operating/sounding
 - Status display of packet communication, 64K communication, communication via USB, infrared communication or iC transmission

✓ INFORMATION

- Because of the characteristics of surface panel, sub-display may not be seen clearly at places in the sunlight. In this case, check the display in the shade, or make a shadow with your hand to check the display.

❖ Displaying Multi information

Multi information enables you to quickly check the details and number of missed calls, recorded messages, unread mail, unread MessageR/F or voice messages in Voice Mail service, the number of steps in Pedometer, i-Channel ticker or calendar.



E.g. : Arrival image



E.g. : Pedometer

- The applicable information does not appear when no missed call or unread mail exists, Pedometer is set to "Not use", or you do not subscribe to i-Channel.

1 On the sub stand-by screen, **[TV]**

- Each time you press **[TV]**, the display switches in the order of the number of unchecked information → pedometer information → i-Channel ticker → calendar → stand-by display.

Checking the number of arrival information : **[]**

- Each time you press **[]**, the number of items for each information is displayed. Press **[]** while checking the number to check details.

Switching calendar : **[]** (previous month) or **[]** (next month)

❖ Checking arrival information with vibration

1 On the sub stand-by screen, **[]**

- The vibrator operates once when there is arrival information.

❖ Playing video or using camera on the sub-display

While playing video recorded by 1Seg, shooting a still image, recording a movie or playing Toy's world with FOMA terminal folded, even after folding the terminal, you can keep using the function on the sub-display and operate it with **[TV]** or **[]**.

- You can activate Still camera, Movie camera or Toy's world with FOMA terminal folded.

❖ Selecting functions from the sub-display menu

Using the sub-display menu, you can use Silent mode ON/OFF, Check new message, Start still camera, Start movie camera, MUSIC Player, Fake call or Mini-game.

- Side key shortcut is set by default.

<Example> Performing i-mode inquiry

- On the sub stand-by screen, **[TV]** (1 sec. or more) ▶ Use **[]** to move the cursor to "Check new message" ▶ **[TV]**



- When **[TV]** is pressed (1 sec. or more) while the menu is displayed, the sub stand-by screen reappears.

❖ Playing mini games

1 On the sub stand-by screen, **[TV]** (1 sec. or more) ▶ "Mini-game"

- Pressing **[TV]** (1 sec. or more) or **[]** also starts a game in some settings.

Exiting a game : **[TV]** (1 sec. or more)

- The game exits when FOMA terminal is opened or no operation is performed for a certain period of time.

❖ Playing Toy's world

- Playback is possible when Motion sensor is "ON" and Tap On is set.

1 Double-tap the side of FOMA terminal while the sub stand-by screen is displayed

- Playback ends after approximately 5 minutes. You can also end playback by double-tapping the side of FOMA terminal during playback.