

### General Inquiries <docomo Information Center>

☎ 0120-005-250 (toll free)

\* Service available in: English, Portuguese, Chinese, Spanish, Korean.  
\* Available from mobile phones and PHSs.

■ From DOCOMO mobile phones (In Japanese only) ■ From land-line phones (In Japanese only)

☎ (No prefix) 151 (toll free) ☎ 0120-800-000 (toll free)

\* Unavailable from land-line phones, etc. \* Available from mobile phones and PHSs.

● Please confirm the phone number before you dial.

● For Applications or Repairs and After-Sales Service, please contact the above-mentioned information center or the docomo shop etc. near you on the NTT DOCOMO website or the i-mode site.  
▶ NTT DOCOMO website <http://www.nttdocomo.co.jp/english/> ▶ i-mode site iMenu⇒お客様サポート (user support)⇒ドコモショップ (docomo Shop) \* In Japanese only

### Loss or theft of FOMA terminal or payment of cumulative cost overseas <docomo Information Center>

(available 24 hours a day)

■ From DOCOMO mobile phones

International call access code for the country you stay (table 1) -81-3-5366-3114\* (toll free)

\* You are charged a call fee to Japan when calling from a land-line phone, etc.  
※ If you use F-04A, you should dial the number +81-3-5366-3114 (to enter '+', press and hold the '0' key for at least one second).

■ From land-line phones <Universal number>

International prefix number for the universal number (table 2) -800-0120-0151\*

\* You might be charged a domestic call fee according to the call rate for the country you stay.  
※ See page XXX and XXX for international call access codes for major countries (table 1) and international prefix numbers for the universal number (table 2).

● If you lose your FOMA terminal or have it stolen, immediately take the steps necessary for suspending the use of the FOMA terminal.  
● If the FOMA terminal you purchased is damaged, bring your FOMA terminal to a repair counter specified by DOCOMO after returning to Japan.



Li-ion 00

To prevent damage to the environment, bring used battery packs to a docomo service counter, a docomo agent or a recycle center.



This manual is printed using an ink based on soy bean oil.

Don't forget your mobile phone ... or your manners!  
When using your mobile phone in a public place, don't forget to show common courtesy and consideration for others around you.

### Repairs

■ From DOCOMO mobile phones (In Japanese only) ■ From land-line phones (In Japanese only)

☎ (No prefix) 113 (toll free) ☎ 0120-800-000 (toll free)

\* Unavailable from land-line phones, etc. \* Available from mobile phones and PHSs.

### Failures encountered overseas <Network Technical Operation Center>

(available 24 hours a day)

■ From DOCOMO mobile phones

International call access code for the country you stay (table 1) -81-3-6718-1414\* (toll free)

\* You are charged a call fee to Japan when calling from a land-line phone, etc.  
※ If you use F-04A, you should dial the number +81-3-6718-1414 (to enter '+', press and hold the '0' key for at least one second).

■ From land-line phones <Universal number>

International prefix number for the universal number (table 2) -800-5931-8600\*

\* You might be charged a domestic call fee according to the call rate for the country you stay.  
※ See page XXX and XXX for international call access codes for major countries (table 1) and international prefix numbers for the universal number (table 2).

Sales: NTT DOCOMO, INC.  
Manufacturer: FUJITSU LIMITED

2008.12 (1st Edition)  
CA92002-5551

docomo

F-04A

INSTRUCTION MANUAL

'09.2

# docomo SMART series F-04A

ISSUE DATE: '09.2

NAME:

PHONE NUMBER:

MAIL ADDRESS:

INSTRUCTION MANUAL

NTT docomo

Easy Search/Contents/Precautions	■■■■
Before Using the Handset	■■■■
Voice/Videophone Calls	■■■■
Phonebook	■■■■
Sound/Screen/Light Settings	■■■■
Security Settings	■■■■
Mail	■■■■
i-mode/i-motion/i-Channel	■■■■
Full Browser	■■■■
Camera	■■■■
1Seg	■■■■
Music	■■■■
i-appli	■■■■
Osaifu-Keitai/ToruCa	■■■■
Data Management	■■■■
Convenient Functions	■■■■
Character Entry	■■■■
Network Services	■■■■
Overseas Use	■■■■
PC Connection	■■■■
Appendix/Troubleshooting	■■■■
Index/Quick Manual	■■■■

## DOCOMO W-CDMA System

### Thank you for purchasing "docomo STYLE series F-04A" mobile terminal.

Before and during use of your FOMA terminal, be sure to thoroughly read this manual and instruction manuals that come with other optional devices to ensure you are able to correctly use your FOMA terminal. For more detailed information, contact "General Inquiries" using the phone number on the back of this manual. F-04A is your capable partner. Please treat it with care and enjoy using it for years.

### Before using your FOMA terminal

- Because your FOMA terminal uses wireless transmission, it may not function in locations where it is difficult for radio waves to penetrate, such as tunnels, underground passages and some buildings, in areas where radio waves are weak, or out of service area. Even when you are high up in a tall building or condominium and nothing blocks your view outside, your FOMA terminal may not be able to receive or transmit signals. Also, communication may be interrupted even when the signal meter on your FOMA terminal indicates there are strong radio waves and you are not moving (traveling).
- Use your FOMA terminal in a way that does not disturb others in public spaces, crowded locations or quiet places.
- Because your FOMA terminal uses radio waves to communicate, it is possible that a third party may attempt to tap your calls. However, the W-CDMA system automatically applies a confidential communication function to all calls, so even if a third party could somehow tap a call, they only hear noise.
- Your FOMA terminal encodes voice communication as digital data. When you are operating your FOMA terminal while moving to a location subject to weaker radio wave conditions, the transmitted digital data may not be correctly decoded and as a result the decoded voice may differ somewhat from the actual voice.
- Maintain a separate record of the data (Phonebook, Schedule, Notepad, Recorded messages, Voice memos, Movie memo, etc.) you registered in your FOMA terminal. Note that DOCOMO assumes no responsibility for any loss of saved contents of data resulting from malfunction, repair, changing of the model or other handling of FOMA terminal.
- You are recommended to save important data to microSD card. Using DOCOMO keitai datalink, you can transfer and save phonebook, mail, schedule and other data to a PC.

- The user hereby agrees that the user shall be solely responsible for the result of the use of SSL.  
Neither DOCOMO nor the certifier as listed herein makes any representation and warranty as for the security in the use of SSL. If the data should be erased, DOCOMO assumes no responsibility for the loss of any data.  
Certifier : VeriSign Japan K.K., Cybertrust Japan Co., Ltd., GlobalSign K.K., RSA Security Japan Ltd., SECOM Trust Systems Co., Ltd., Comodo CA Ltd.
- This FOMA terminal supports FOMA Plus-Area and FOMA HIGH-SPEED Area.
- FOMA terminal can be used only via the FOMA network provided by DOCOMO and DOCOMO's roaming area.

### Before using this manual

This FOMA terminal supports Kisekai Tool (→P92). When changing the design of the menu screen using Kisekai Tool, the structure of some menus may be changed according to the usage frequency depending on the menu type. Also, the number assigned to menu item (item number) may not be applicable to some menu items.

Latest information about this manual can be downloaded from NTT DOCOMO website.

- User's Manual Download  
<http://www.nttdocomo.co.jp/english/support/manual/index.html>  
\* The URL and contents are subject to change without prior notice.

# Viewing/Searching this manual

This manual provides the methods below for necessary function's easy search.

## Searching from Easy Search ▶ P4

Search for frequently used or convenient functions by plain words.

## Searching from Menu list ▶ P354

Search from menu displayed on the display of F-04A.

## Searching from thumb indices ▶ Front cover

Search from the index on the front cover.

*\*See P2-3 for examples.*

## Searching from Contents ▶ P6

Search from Contents categorized into chapters by functions.

## Searching by main functions ▶ P8

Search from featured functions or new functions of F906i.

## Searching from the Index ▶ P412

Search from the function name, item keyword or service name.

## Using the Quick Manual ▶ P420

You can cut out Quick Manual from this manual and carry it with you anywhere.

Also refer to described "Quick Manual (Overseas Use)" when using FOMA terminal overseas.

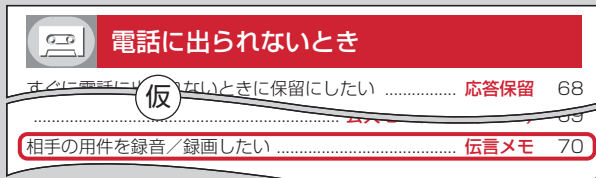
- In this "Manual for F-04A", "F-04A" mobile terminal is usually referred to as "FOMA terminal". Please be forewarned.
- This manual explains functions performed with a microSD card. A microSD card is required separately.  
microSD card→P279
- The images or illustration used in this manual are examples. They may differ from the actual displays.
- The icons and screens that appear on the display and sub-display have been initialized to the default settings selected from the combinations prepared in FOMA terminal depending on FOMA terminal color.  
This manual mainly gives descriptions assuming that Kisekai Tool is set to "Cosmetic Pink". →P92
- In this manual, "i-appli compatible with Osaifu-Keitai which supports IC card function" is referred to as "Osaifu-Keitai compatible i-appli".
- The description of "authenticate" indicates the operating procedure for entering the terminal security code (4-8 digits).→P100
- Unauthorized copying of parts of or this entire manual is prohibited.
- The contents of this manual are subject to change without prior notice.

# Viewing/Searching this manual

Methods to search pages are described, taking "Answer machine" for example.

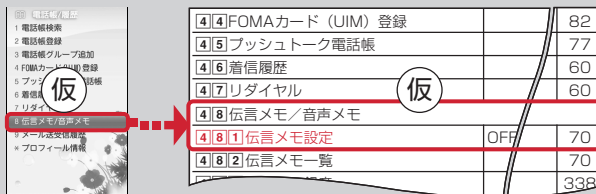
## Searching from Easy Search

Functions frequently used and convenient functions are categorized by their purposes and with simple words.



## Searching from Menu list

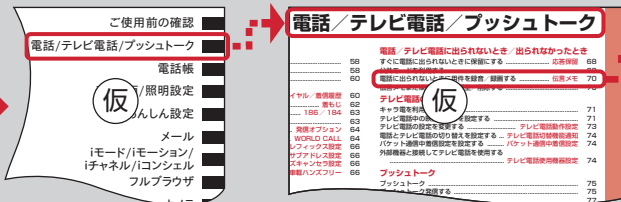
Functions can be searched from the words displayed on the FOMA terminal screen.



## Searching from thumb indices

Functions can be searched by using indices in the order of the front cover, chapter top page and function description page.

The chapter top page also gives the list of detailed contents.



**Function name**

This name is listed in Index.

**Outline and supplementary description of the function****Typical operating procedure****伝言メモ****電話に出られないときに用件を録音／録画する**

- 伝言メモを起動しておくと、電話に出られないときに応答ガイダンスが流れ、相手の用件が録音／録画されます。
- 音声電話とテレビ電話を合わせて最大4件、1件につき約30秒間録音／録画できます。
  - 2in1利用時、AナンバーとBナンバーに着信した伝言メモを合わせて最大4件録音／録画できます。表示はモードによって異なります。
  - フッシュトークでは利用できません。

**◆ 伝言メモを起動する**

- 通常スタイルで操作してください。
- (1秒以上) または
- 待受画面にが表示されます。
- 伝言メモの起動中に電話がかかってくると
- 電話がかかってくる

電話／テレビ電話／フッシュトーク

**Index related to thumb index**

\* The page shown here represents an example. Images may differ from actual page in this manual.

**2 相手のメッセージが録音／録画される**

- 開始時と終了時に相手には確認音（ピーツ）が鳴ります。また、開始時から約25秒後に終了予告音（ピビツ）が鳴ります。

**3 録音／録画が終了すると、電話が切れる****◆ クイック伝言メモに対応する（クイック伝言メモ）**

伝言メモを起動していなくても、着信中にを1秒以上押し、その着信に限る伝言メモを1回だけ動作させられます。この操作は、伝言メモを開始に設定する操作ではありません。

**仮****お知らせ**

- 応答ガイダンス中、伝言メモ録音／録画中でもを押すと電話に出ることができます。テレビ電話の場合はを押しても出られません。このとき、電話を受けるまでの録音／録画内容は記録されません。
- 圏外や電源が切れているときは、伝言メモは動作しません。留守番電話サービスをご利用ください。
- 伝言メモが4件録音／録画されると、待受画面にが表示され、伝言メモおよびクイック伝言メモは動作しません。不要な伝言メモを削除してください。留守番電話サービスまたは転送でんわサービスを開始している場合は各サービスが動作します。

Supplementary description of the operation

Detailed description and convenient information about the function

- In this manual, operation by pressing keys is represented by graphic symbols.→P26 "Part names and functions"
- The representations and meanings of operating procedures are as shown below.

Representation example	Meaning
(1 sec. or more)	Press  for 1 second or more.
[Settings & NW services] -	On the stand-by display, , move the cursor to [Settings & NW services] and press . Successively, press   , then press any of  - .

- In this manual, to select an item by placing the cursor with (Multi-cursor key) and pressing (Enter key) is referred to as "select". Regarding an operation to enter characters in the entry field, the final step of pressing [OK] is omitted.
- This manual uses the default settings to describe operations. If the settings are changed, the displays or operations of FOMA terminal may differ from the ones described in this manual. For the default settings, see Menu List.→P354

# Easy Search

Functions which you want to know can be searched for using friendly words.



## Convenient functions for calls

Showing/Hiding your phone number .....	<b>Caller ID notification</b>	48
Putting the call on hold .....	<b>On hold</b>	53
Changing the volume of the other party's voice .....	<b>Listen volume</b>	53
Switching from voice call to videophone call .....	<b>Switching to videophone call</b>	54



## When you cannot answer the call

Putting the call on hold when you cannot answer it immediately .....	<b>Respond and Hold</b>	63
Notifying the caller that you have to refrain from talking .....	<b>Public mode (Drive mode)</b>	63
.....	<b>Public mode (Power OFF)</b>	64
Recording the other party's voice or image .....	<b>Answer machine</b>	64



## Changing sound, lighting color and vibration

Setting different ring tone etc. for incoming calls from specific parties .....	<b>Alert by contact</b>	73
Changing ring alert .....	<b>Ring alert</b>	80
Changing loudness of ring tone .....	<b>Adjust volume</b>	82
Making vibration when there is an incoming call .....	<b>Vibrate alert/effect</b>	82

Muting keypad sound .....	<b>Keypad sound</b>	83
Setting silent mode .....	<b>Silent mode</b>	84
Changing the color of keypad light .....	<b>Keypad light</b>	90
Changing color such as light .....	<b>Light alert</b>	96



## Changing displays

Meanings of icons on display .....	<b>Viewing display</b>	29
Switching the menu display .....	<b>Selecting functions from menu</b>	35
Changing stand-by display .....	<b>Stand-by display</b>	86
Displaying a calendar on stand-by display .....	<b>Info/calendar layout</b>	87
Changing font size .....	<b>Font size</b>	97



## Safety and security

Hiding contents of phonebook .....	<b>Secret attribute</b>	78
Locking FOMA remotely in case of misplacement etc. ....	<b>Omakase Lock<sup>*1</sup></b>	103
Rejecting calls with no caller IDs .....	<b>Anonymous caller</b>	113
Rejecting calls from parties not saved in phonebook .....	<b>Unregistered caller</b>	114
Saving data such as phonebook in case of data loss .....	<b>Data Security Service<sup>*2</sup></b>	114



## Making full use of mail

Sending Deco-mail .....	<b>Deco-mail</b>	122
Sending images and/or melodies .....	<b>Attachment</b>	127
Automatically sorting mails .....	<b>Sort method</b>	142



## Making full use of camera

Saving shot still images to microSD card .....	<b>Save to</b>	189
Changing image size .....	<b>Still image settings/Recording settings</b>	193
Viewing shot still images .....	<b>Displaying image</b>	266



## Making full use of 1Seg

Watching 1Seg .....	<b>Activate 1Seg</b>	206
Recording 1Seg .....	<b>1Seg recording</b>	211
Reserving watching/recording 1Seg .....	<b>Watching/Recording reservation</b>	212
Changing settings of images and sounds .....	<b>User setting</b>	214

\*1 A charged service.

\*2 A charged service requiring subscription.

- For procedures to search for other functions, see "How to use this manual". → P1
- Quick Manual introduces you procedures for using convenient functions. → P420



## Other convenient functions

Reading QR and/or bar code .....	<b>Bar code reader</b>	200
Listening to music .....	<b>MUSIC Player</b>	222
Using microSD card .....	<b>microSD card</b>	279
Sending or receiving data via infrared communication .....	<b>Infrared communication</b>	290
Using alarm clock .....	<b>Alarm clock</b>	299
Using calculator .....	<b>Calculator</b>	312
Using a mobile phone overseas .....	<b>International Roaming</b>	340
Updating software .....	<b>Software update</b>	395
Keeping security software updated .....	<b>Scanning function</b>	399

# Contents

- **Before using your FOMA terminal**  
Inside front cover
- **Viewing/Searching this manual** ..... 1
- **Easy Search** ..... 4
- **Main functions of F-04A** ..... 8
- **Precautions (ALWAYS FOLLOW THESE DIRECTIONS)** ..... 10
- **Handling precautions** ..... 17
- **Waterproofness** ..... 19
- **Accessories and main options** ..... 24

## **Before Using the Handset ..... 25**

Part names and functions Viewing display  
Selecting menu Motion sensor Using UIM  
(FOMA card) Attaching/Removing battery  
pack Charging battery Battery level Power  
ON/OFF Select language Date & time Caller  
ID notification User information etc.

## **Voice/Videophone Calls ..... 51**

Making a call Redial/Received calls Chaku-  
moji 186/184 Tone signal (DTMF) Call option  
WORLD CALL Receiving a call Any key  
answer Close settings Respond and Hold  
Public mode Recorded messages Using  
Chara-den Videophone settings Notify of  
switchable mode etc.

## **Phonebook ..... 71**

Phonebook new entry Alert by contact Group  
settings Search/Edit/Delete phonebook  
Secret attribute Quick dial etc.

## **Sound/Screen/Light Settings ..... 79**

Ring alerts & Sounds Adjust volume Vibrate  
alert/effect Silent mode Timed theme Stand-  
by display Call image Mail image Power  
saving mode Select startup menu Kisekae  
Tool Light alert Clock display format etc.

## **Security Settings ..... 99**

Security code Terminal security code change  
PIN code All lock Omakase Lock Self mode  
Personal data lock Keypad dial lock Privacy  
mode Side key hold Lock on close/Auto  
keypad lock Accept/Reject call Data security  
service Reset Delete all data etc.

## **Mail ..... 119**

Creating/Sending i-mode mail Deco-mail  
Decome-Anime Attachment Saving i-mode  
mail Quick mail Receiving i-mode mail Check  
new message Operating Inbox/Outbox Mail  
settings MessageR/F Early warning "Area  
Mail" Creating/Sending chat mail Creating/  
Sending SMS etc.

## **i-mode/i-motion/i-Channel ..... 159**

Site display Change i-mode password Go to  
location Bookmark Screen memo  
Downloading from site Uploading to site i-  
mode settings Operating certificate i-motion  
i-Channel i-Channel ticker etc.

## **Full Browser ..... 179**

Displaying web pages designed for PC Setting  
Full Browser etc.

## **Camera ..... 185**

Still camera Movie camera Sound recorder  
Advanced settings Setting for shooting Bar  
code reader etc.



**1Seg.....203**

Setting channels 1Seg watching Program guide i-αpli Data broadcasting TVlink Multi window Recording/Reserving etc.

**Music.....217**

Setting program Operating Music&Video Channel Saving music data Playing/Managing music data BGM play etc.

**i-αpli.....231**

Downloading Starting i-αpli i-αpli To i-αpli stand-by display Managing i-αpli etc.

**Osaifu-Keitai/ToruCa.....255**

iC transfer service Starting Osaifu-Keitai compatible i-αpli IC card lock Receiving ToruCa etc.

**Data Management.....265**

Displaying/Editing image Playing/Editing movies/i-motion Displaying Chara-den Playing melody Displaying recorded data of 1Seg microSD card Managing data Infrared communication/iC transmission etc.

**Convenient Functions.....295**

Multiaccess Multitask Quick search Auto power ON/OFF Countdown timer Alarm clock High-pitched alarm Scheduler Shortcut icons Custom menu Side key shortcut Toy's world Fake call Voice memo/Movie memo Call duration/Call cost Calculator Notepad Dictionaries Pedometer Earphone/ Microphone with switch etc.

**Character Entry.....319**

5-touch input method Save phrase Copying/ Cutting characters KUTEN code input Save word Password manager DL dictionary 2-touch input Text input method etc.

**Network Services.....329**

Voice Mail Service Call Waiting Call Forwarding Service Nuisance Call Blocking Service Caller ID Request Service Dual Network Service English guidance Service numbers Arrival call act Remote control Multi Number 2in1 OFFICEED Additional service etc.

**Overseas use.....339**

Overview of international roaming service (WORLD WING) Services available Preparing and checking for overseas use Making/ Receiving a call Network search mode PLMN setting Area service status Roaming guidance Bar calls at roaming Network services etc.

**PC Connection.....347**

Data communication DOCOMO keitai datalink etc.

**Appendix/Troubleshooting...353**

Menu list Combination of Multiaccess/ Multitask functions Services available Introduction of options and related devices Error messages Warranty and After-Sales Service Software update Scanning function SAR certification information Intellectual Property Right etc.

**Index/Quick Manual.....411**

Index Quick Manual Quick Manual (Overseas Use)

# Main functions of F-04A

## 1Seg

You can watch "1Seg" that is a terrestrial digital TV broadcasting for mobile devices. You can also shoot a still image and record video while watching 1Seg. →P204

## International Roaming

While staying overseas, you can use the same FOMA terminal, phone number and mail address as those used in Japan (3G Area is supported). →P340

And, Japanese-English/Japanese-Chinese version of "しゃべって翻訳 for F (Speech Translation for F)", an application that interprets your Japanese into English or Chinese and your English or Chinese into Japanese, is preinstalled. →P238

## Waterproofness

Waterproof to IPX5 and IPX7 standards if the external connection jack cap is strictly closed as well as the back cover is mounted and locked. →P19  
You can talk or send/receive mail in the rain, in a bath or at a poolside. You can hand wash a dirty handset with tap water.

## Large sub-display

Stand-by display, recorded video, etc. can be displayed on the 2.0-inch color sub-display. →P32  
Also, when multi information is set, press **TV** while displaying the sub stand-by screen to display information such as calendar, pedometer, i-Channel, etc. on the sub-display. →P34

## Motion sensor

You can stop alarm sound by double-tapping FOMA terminal or enjoy watching light or Flash graphics change by tilting FOMA terminal. →P38

## Super clear-voice 2 and Voice slowing

When "Voice clear" is set to ON, noise equalizer adjusts a sound according to a voice range and emphasizes other party's voice. Also, "Voice slowing" that adjusts the voice speed makes it easy to hear other party's voice. These two functions allow you to communicate by delivering each other's voice.

## Toy's world

Animation and light change or vibrator operates in response to the tilt, sound and double-tapping of FOMA terminal.  
Animation can be displayed either on the stand-by display and sub-display. →P309

## Avatar notifications

With avatar set to phonebook, the avatar is displayed when making/receiving a call or receiving mail. You can recognize the sender at sight and enjoy the action of avatar that operates according to sending/receiving types. →P72

## Sub-display mini games

You can activate/terminate a game with FOMA terminal folded and play it on the sub-display. You can operate it with side keys or by tilting FOMA terminal. →P34

### Charging image

You can display your favorite image on the sub-display while charging. →P90

### Automatic lighting of sub-display

Sub-display light can be automatically turned on only by picking up and tilting FOMA terminal. →P90

### High-pitched alarm

By using High-pitched alarm, you can sound loud alarm by simple side keys operation and let people around you know where you are. →P300

### Fake call

Fake call is a function that allows you to pretend you are receiving a call or calling. You can talk over smoothly hearing voice prompts. →P309

### Auto-keypad lock

In addition to Lock on close that locks each time FOMA terminal is folded, FOMA terminal is equipped with Auto keypad lock that locks key operations when no operation is made for the specified time. →P110

### High-performance camera

FOMA terminal is equipped with functions such as a face detection to distinguish people's face, local contrast correction, Auto focus, etc. The shooting screen is displayed on the sub-display, so you can shoot images with FOMA terminal folded or shoot your image with high-quality out-camera. The shot still image is saved according to the orientation of camera when the image is shot. →P186

### Quick search

On the stand-by display or while performing a function, search functions of i-mode, Full Browser, Map, dictionaries, phonebook or mail can be used by pressing the search key. →P297

### Shortcut icons

Only by selecting the icon pasted on the stand-by display for function, file or mail being created, you can start the target operation quickly. And, icon on the stand-by display can be changed freely. →P305

### Pedometer




FOMA terminal can be used as a pedometer, and walking distance, consumed calories or quantity of burnt fat can be calculated. →P314  
You can check the number of steps and calculated values on the sub-display. →P237

### Other functions







- Videophone call →P52
  - Chaku-moji →P56
  - Kisekai Tool →P92
  - Security Settings →P100
  - i-mode mail/Deco-mail/Deco-mail pictogram →P120
  - Chaku-uta full<sup>®</sup>/Uta-hodai/Music&Video Channel<sup>™</sup>/MUSIC Player/Video clip →P218
  - i-appli/Mega i-appli/Chokkan Game →P232
  - Osaifu-Keitai/ToruCa →P256
  - Network services →P330
  - High-speed communication compatibility →P348
- \* A charged service requiring subscription.  
\* "Chaku-uta full" is registered trademark of Sony Music Entertainment (Japan) Inc.

## Precautions (ALWAYS FOLLOW THESE DIRECTIONS)

- Before using your FOMA terminal, or when necessary, read the precautions below to ensure safe use and handling. After reading this manual, keep it carefully.
- These precautions are intended to protect you and others around you. Read and follow them carefully to avoid injury, damage to the product or damage to property.
- The signs below differentiate between the levels of danger that can occur if the product is not used within the specified guidelines.

 <b>DANGER</b>	This sign denotes that death or serious injury may directly result from improper use.
 <b>WARNING</b>	This sign denotes that death or serious injury may result from improper use.
 <b>CAUTION</b>	This sign denotes that bodily injury or damage to property may result from improper use.

- The symbols below show specific directions.

 Don't	This symbol denotes that the action is prohibited.
 No disassembly	This symbol denotes that disassembling the phone or its components is not allowed.
 No wet hands	This symbol denotes that using the phone or its components with wet hands is not allowed.
 No liquids	This symbol denotes that using the phone or its components in a bathroom or other highly humid area is not allowed.
 Do	This symbol denotes that an instruction must be obeyed at all times.
 Unplug	This symbol denotes that the equipment should be unplugged.

### ■ Precautions contain the description below.

Handling FOMA terminal, battery pack, adapter (including battery charger) and UIM (common).....	11
Handling FOMA terminal .....	12
Handling battery pack.....	14
Handling optional devices (AC Adapter/DC Adapter/Desktop Holder/In-Car Holder) .....	15
Handling UIM .....	16
Handling mobile phones near electronic medical equipment .....	16

## ◆ Handling FOMA terminal, battery pack, adapter (including battery charger) and UIM (common)

### ⚠ DANGER



Don't

**Do not use, store, or leave the equipment in hot areas such as near flames or in areas under strong direct sunlight such as inside a vehicle.**

May cause the equipment to be deformed or malfunction, and battery pack to leak, heat, burst or ignite, and the capability or life to be reduced or shortened. Overheating on parts of the case may cause burns or injuries.



No disassembly

**Do not disassemble or remodel the equipment. Do not solder items onto the equipment.**

May cause fire, injuries, electric shock, or malfunction. It may also cause the battery pack to leak, heat, burst or ignite.



No liquids

**Do not let the equipment get wet.**

Contact with water or other liquids can cause heating, electric shock, fire, malfunctions or injuries. Take care of the place for use and treatment of the equipment.



Do

**Use the battery pack and adapter (including battery charger) specified by NTT DOCOMO for your FOMA terminal.**

Use of equipment not specified by DOCOMO can cause FOMA terminal, battery pack and other parts to leak, heat, burst, catch fire or malfunction.

Battery Pack F09  
 Desktop Holder F28  
 FOMA AC Adapter 01/02  
 FOMA DC Adapter 01/02  
 FOMA Dry Battery Adapter 01  
 FOMA USB Cable with Charge Function 01/02

FOMA Portable Charging Adapter 01  
 FOMA AC Adapter 01 for Global use  
 \* Contact a sales outlet such as DOCOMO Shop for information on other compatible products.

### ⚠ WARNING



Don't

**Do not put the battery pack, FOMA terminal, adapter (including battery charger) or UIM in microwave ovens or other heating appliances or high-pressure containers.**

May cause the battery pack to leak, heat, burst or ignite, FOMA terminal, adapter (including battery charger) or UIM to heat, smoke, ignite, or damage circuits.



Don't

**Do not throw the equipment or give hard shock to it.**

May cause the battery pack to leak, heat, burst or ignite, and the equipment to malfunction or catch fire.



Don't

**Keep conductive materials (metal pieces, pencil lead, etc.) from coming in contact with the charging jack or external connection jack. Do not put those materials inside the terminal.**

May be subject to electrical short and could cause fire or malfunction.



Do

**Turn FOMA terminal OFF before entering a place such as a gas station where flammable gases are generated. Do not charge the battery. The gas may catch fire.**

When using Osaifu-Keitai in a place as a gas station, turn OFF the terminal before using it. (When IC card lock is activated, deactivate it before turning OFF the terminal.)



Do

**If the equipment starts giving off a strange smell, overheats, becomes discolored or deformed during use, charging or in storage, immediately perform the following operations.**

1. Remove the power plug from the wall outlet or cigarette lighter socket.
2. Turn FOMA terminal OFF.
3. Remove the battery pack from FOMA terminal.

May cause the equipment to heat, burst or ignite or the battery pack to leak if you keep using the equipment.

**⚠ CAUTION**

**Do not leave the equipment on unstable or sloping surfaces.**

Don't

May cause malfunction or injuries.



**Do not store the equipment in extremely humid, dusty or hot areas.**

Don't

May cause malfunction.



Do

**Children using the equipment should be instructed in proper operation by an adult. Do not allow them to use the equipment without adult supervision.**  
May cause injuries.



Do

**Store the equipment out of reach of small children.**

May be accidentally swallowed or cause injuries.



Do

**Be careful especially when using FOMA terminal connected to the adapter (including battery charger) continuously for a long time.**

If you execute i-appli, use videophone call or watch 1Seg while charging the battery pack, FOMA terminal, battery pack and adapter (including battery charger) may become hot. Directly touching a hot part for a long time, you may have redness, itching or rash on your skin, or it may result in low-temperature burns depending on your constitution and/or health condition.

**◆ Handling FOMA terminal****⚠ WARNING**

Don't

**Do not direct the infrared data port toward your eye and transmit signals.**

May affect your eyes. Faulty operation could result from directing the infrared data port toward other infrared equipment and transmitting signals.



Don't

**Do not put FOMA terminal in the place such as the dashboard near the air-bag, where the influence of air-bag explosion is expected.**

When the air-bag explodes, FOMA terminal may hit yourself or others and could cause injury, equipment malfunction or damage.



Don't

**When you use electronic medical equipment, do not keep the terminal in your chest pocket or inside pocket.**

Using your FOMA terminal near medical electronic equipment could cause equipment failure.



Don't

**Do not put foreign objects such as liquid like water, metal pieces or burnable things into UIM or microSD card slot.**

May cause fire, electric shock or malfunction.



Don't

**Do not turn on the light aiming directly at the driver of the car etc.**

May disturb driving and cause an accident.



Do

**Turn FOMA terminal OFF in areas where use is prohibited, such as in airplanes and hospitals.**

May cause electronic equipment or electronic medical equipment to fail or malfunction. If the function which automatically turns the power ON is set, cancel the setting before turning the power OFF.

When using the phone in a medical facility, be sure to observe the regulations of the facility. If you do prohibited act such as using the phone in an airplane, you may be punished according to law.



Do

**When you talk by setting handsfree, always keep FOMA terminal away from your ear.**

**And, when connecting the earphone/microphone to FOMA terminal and play a game or music, adjust the volume moderately.**

Too loud volume may cause a hearing loss. And, if you cannot hear the sound around you clearly, it may cause an accident.



Do

**If you have weak heart, be careful when setting the Vibrate alert (vibration) or alert volume setting.**  
Could affect heart function.



Do

**If it starts thunder while using the terminal outdoors, turn the power OFF immediately, and move to a safe location.**

May be subject to lightning strike and could cause electric shock.



Do

**Turn FOMA terminal OFF near high-precision electronic control equipment or electronic equipment using low-power signals.**

May cause the equipment to fail or malfunction.

\* Examples of electronic equipment to avoid.

Hearing aids, implanted pacemakers or defibrillators, other electronic medical equipment, fire alarms, automatic doors and other automatic control equipment.

Users wearing implanted pacemakers or defibrillators or other electronic medical equipment should check with the manufacturer or sales outlet about the effect of radio frequencies on the equipment.



Do

**When the display or camera lens is accidentally broken, be careful of broken glass or exposed internal parts of FOMA terminal.**

Surfaces of display and camera lens are made of plastic panels and they are structured for the glass not to scatter, however, if you mistakenly touch broken or exposed parts, you may be injured.



Do

**If you sound high-pitched alarm, be sure to keep FOMA terminal away from your ear.**

May cause hearing loss.

## CAUTION



Don't

**Do not swing FOMA terminal by its strap.**

May cause the terminal damage or failure, or injury to yourself or others.



Don't

**When using the motion tracking or motion sensor, check the safety around you, hold FOMA terminal firmly, and do not shake it unnecessarily.**

The motion tracking and motion sensor are functions to operate by tilting or shaking FOMA terminal. There is a risk that FOMA terminal hits people or objects around you by shaking it too much, causing a serious accident or damage.



Don't

**If you put a metal strap or the like to FOMA terminal, be careful not to let the strap hit people or objects around you when performing motion tracking or using motion sensor.**

Accidents such as injury, malfunction or damage may result.



Don't

**Do not place magnetic disks or cards with magnetic stripes near FOMA terminal or place inside and fold the terminal.**

Data stored on media such as cash cards, credit cards, telephone cards and floppy disks may be erased if the storage medium is placed near the phone.



Don't

**Do not bring magnetized objects close to FOMA terminal.**

Bringing strong magnetism close may cause a malfunction.



Don't

**If the display part is accidentally broken and liquid crystal leaks out, do not put the liquid in your mouth, inhale, or make contact with your skin. If the liquid gets into your eyes or mouth, rinse it with clean water and see a doctor immediately.**

**And, if the liquid adheres to skin or clothing, use alcohol etc. to wipe it off, then wash with soap.**

May cause loss of sight or skin problems.



Don't

**Do not bring the speaker close to your ear when the ring alert is sounding or you are playing a melody with FOMA terminal.**

May cause hearing loss.



Do

**In rare cases, using the phone in some vehicle models can cause the vehicle's electronic equipment to malfunction or fail.**

In this case, do not use the phone because it may hamper safe driving.



**Mobile phones can give some users skin problems such as itching, allergic reactions or rashes. If you develop skin problems, stop using the phone immediately, and see a doctor.**

FOMA terminal contains metal in the parts below.

Place of use	Material	Surface finishing
Charging jack	Copper	Gold plate



**When opening or closing FOMA terminal, take care not to have your fingers or strap caught by the terminal.**  
May cause injuries or damages.



**When watching 1Seg, take a certain distance from the display in a fully bright place.**  
May cause your eyesight to be impaired.

### ◆ Handling battery pack

- Check that the battery type matches the type displayed on the battery pack label.

Display	Battery type
Li-ion 00	Li-ion battery

### ⚠ DANGER



**Do not connect a wire or other metal objects to the jack. And, do not carry or store FOMA terminal with objects like a metal necklace.**

May cause the battery pack to leak, heat, burst or ignite.



**Do not try to force the battery pack onto FOMA terminal if you are having trouble installing it. Always install it after checking that it is correctly oriented.**

May cause the battery pack to leak, heat, burst or ignite.



**Do not throw the battery pack into the fire.**

May cause the battery pack to leak, heat, burst or ignite.



**Do not nail the battery pack, hit with a hammer or step on it.**

May cause the battery pack to leak, heat, burst or ignite.



**If the battery pack's fluid contacts eyes, immediately flush the eyes with clean water and see a doctor right away. Do not rub the eyes.**

May cause loss of sight.

### ⚠ WARNING



**If the battery pack seems to have abnormalities such as deformation or scratches due to an external impact or falling, stop using it immediately.**

May cause the battery pack to leak, heat, burst or ignite, and the equipment to malfunction or catch fire.



**If the battery pack does not have a full charge after being charged for the specified time, stop charging it.**

May cause the battery pack to leak, heat, burst or ignite.



**If the battery pack leaks or gives off a strange smell, immediately remove it from the vicinity of open flames.**

The vapors from leaking battery pack fluid may ignite or explode.



**Be careful not to let your pet bite the battery pack.**

May cause the battery pack to leak, heat, burst or ignite, and the equipment to malfunction or catch fire.



**⚠ CAUTION**

Don't

**Do not discard old battery packs together with other garbage.**

May cause igniting or environmental destruction. Tape the terminals of old battery packs to insulate them, and then bring them into a sales outlet such as DOCOMO Shop. If your local municipality has a battery recycling program, dispose of them as provided for.



Don't

**Do not charge a wet battery pack.**

May cause heat generation, ignition or rupture of the battery pack.



Do

**If the battery pack's fluid contacts skin or clothes, immediately flush the contacted area thoroughly with clean water.**

May hurt the skin.

**◆ Handling optional devices (AC Adapter/DC Adapter/Desktop Holder/In-Car Holder)****⚠ WARNING**

Don't

**Do not use the adapter (including battery charger) cord or power cord if it gets damaged.**

May cause electric shock, heat or fire.



Don't

**Do not use the AC adapter or desktop holder in a bathroom or other highly humid area.**

May cause electric shock.



Don't

**Always use the DC adapter with a negative-ground vehicle. Do not plug it into a positive-ground vehicle.**

May cause fire.



Don't

**When it starts to thunder, do not touch FOMA terminal and adapter (including battery charger).**

May be subject to lightning strike and could cause electric shock.



Don't

**Do not short the charging jack while it is connected to the outlet or cigarette lighter socket. Do not touch the charging jack with a part of your body such as your hand or finger.**

May cause fire, malfunction, electric shock or injuries.



Don't

**Place battery charger and desktop holder in a stable location while charging. Do not cover or wrap battery charger and desktop holder with a cloth, blanket, etc.**

May cause FOMA terminal to be removed or the optional devices to be heated, resulting in fire or troubles.



Don't

**Do not place heavy objects on the adapter (including battery charger) cord or power cord.**

May cause electric shock or fire.



No wet hands

**Do not touch the adapter (including battery charger) cord or outlet with wet hands.**

May cause electric shock.



Do

**Only use with the specified power source and voltage.**

If incorrect voltage is used, this may cause fire or failure. When using FOMA terminal overseas, use AC Adapter for global use.

AC adapter : AC100V

DC adapter : 12 or 24V DC (specific for negative ground vehicle)

AC adapter for global use : Between 100V and 240V AC (Connect to the AC outlet for internal household use)



Do

**If the DC adapter's fuse blows, replace it only with the specified fuse.**

Using other fuses may cause fire or equipment failure. For the specified fuse, see the instructions that come with the DC adapter.



Do

**Wipe off any dust that accumulates on the power plug.**

May cause fire.



Do

**When you connect the AC adapter to an outlet, make sure not to touch with metal such as metal straps and firmly connect to the outlet.**

May cause electric shock, electrical short or fire.



Do

**When you disconnect the adapter (including battery charger) from the outlet or cigarette lighter socket, do not pull the adapter (including battery charger) cord or power cord with excessive force; instead hold the plug to disconnect.**

Pulling the cord could damage it, possibly leading to electric shock or fire.



Unplug

**Always remove the power plug from the outlet when not using the adapter for an extended period.**

May cause electric shock, fire or malfunction.



Unplug

**Immediately remove the power plug from the outlet or cigarette lighter socket if water or other fluids get into the adapter.**

May cause electric shock, smoke or fire.



Unplug

**Always remove the power plug from the cigarette lighter socket when cleaning the equipment.**

May cause electric shock.

### ◆ Handling UIM

#### ⚠ CAUTION



Do

**Be careful of the cut surface when removing UIM (ICs).**

May hurt hands or fingers.

### ◆ Handling mobile phones near electronic medical equipment

- These precautions are based on the guidelines produced at the Electromagnetic Compatibility Conference Japan, regarding the protection of electronic medical equipment from radio waves emitted by mobile phone units.

#### ⚠ WARNING



Do

**Obey the following rules inside medical facilities.**

- Do not bring FOMA terminal into operating rooms (ORs), intensive care units (ICUs) or coronary care units (CCUs).
- Turn FOMA terminal OFF in hospital wards.
- Turn FOMA terminal OFF in hospital lobbies and corridors if electronic medical equipment could be nearby.
- If the medical facility has specified zones where use or possession of mobile devices is prohibited, obey those instructions.
- If the function to automatically turn ON the power is set, cancel the setting before turning the power OFF.



Do

**Turn FOMA terminal OFF in crowded trains or other public places where pacemaker or defibrillator wearers could be nearby.**

FOMA terminal's signals may affect the operation of implanted pacemakers or defibrillators, and other devices.



Do

**Wearers of implanted pacemakers or defibrillators must carry and use FOMA terminal at least 22 cm away from the implanted device.**

FOMA terminal's signals may affect the operation of implanted pacemakers or defibrillators, and other devices.



Do

**When electronic medical equipment other than implanted pacemakers or defibrillators are in use outside of medical facilities (such as in home care settings), check with the device manufacturer to determine how the device is affected by electrical signals.** FOMA terminal's signals may affect the performance of electronic medical equipment.

## Handling precautions

### ◆ General

- F-04A is waterproof, however, do not allow water to seep into the handset and do not allow accessories or optional devices to get wet.
  - This FOMA terminal is waterproof to IPX5 and IPX7 standards if the external connection jack cap is strictly closed as well as the back cover is mounted and locked, however, it is not completely waterproof. In the rain or with the handset wet, do not remove/insert the battery pack or open/close the external connection jack cap or the back cover. Seeped water may cause corrosion inside the terminal. Accessories and optional devices are not waterproof. Malfunctions deemed to have been caused by water are not covered by the warranty. Since these conditions are outside the scope of the warranty, a repair, if at all possible, is charged.
- Clean FOMA terminal with a dry soft cloth (such as a cloth for eyeglasses).
  - The display of FOMA terminal may have been applied special coating to improve clearness of the color LCD. When cleaning FOMA terminal, rubbing it roughly with a dry cloth can scratch the display. Take care when handling the unit, and clean it with a dry soft cloth (such as a cloth for eyeglasses). Drops of water or dirt left on the display can cause stains or remove the coating.
  - If FOMA terminal is wiped with alcohol, paint thinner, benzene or detergent, the printing may disappear or color may fade.
- Clean the jack occasionally with a dry cotton swab.
  - If the jack is dirty, the contact may become poor and the power may shut OFF. A dirty jack can result in poor charging, so clean it with a dry cloth or cotton swab.
- Do not place FOMA terminal near an air-conditioner outlet.
  - The rapid change in temperature may cause condensation, causing internal corrosion and malfunction.
- When using, be careful not to subject excessive force to FOMA terminal or the battery.
  - If FOMA terminal is crammed into a brimming bag or placed in a pocket and sat on, display, internal PCBs or battery pack may be damaged or malfunction. And, if external devices are plugged into the external connection jack (earphone/microphone jack), the breakage of the connector or malfunction may result.
- Carefully read the separate instructions that come with FOMA terminal, adapter (including battery charger) and desktop holder.
- Do not rub or scrape the display with a metal piece etc.
  - It may scratch the display, causing malfunction or damage.

- Do not press the surface of the touch panel strongly or operate it with sharp objects such as a nail, a ballpoint pen and a pin.
  - It may damage the touch panel.

### ◆ FOMA terminal

- Avoid extreme temperature.
  - Use the FOMA terminal where the ambient temperature ranges between 5 and 40°C (for temperatures of 36°C or higher, such as in a room with a bath, limit usage to a short period of time) and the ambient humidity ranges between 45 and 85%.
- FOMA terminal may affect land-line phones, TVs or radios in use nearby, so use it as far as possible from these appliances.
- Maintain a separate record of the data you saved in your FOMA terminal.
  - If the data is deleted, DOCOMO assumes no responsibility for the loss of any data.
- Do not plug external devices into the external connection jack (earphone/microphone jack) at a slant, or do not pull it forcibly while it is plugged.
  - May cause malfunction or damage.
- Do not fold FOMA terminal with the strap held inside.
  - May cause malfunction or damage.
- It is normal for FOMA terminal to become warm during use or charging. Continue to use it.
- Do not leave FOMA terminal with the camera in areas under strong direct sunlight.
  - May cause discoloring or burn-in of materials.
- The terminal should normally be used with the external connection jack cap closed.
  - Dust and/or water brought into FOMA terminal cause troubles.
- Do not use FOMA terminal with the back cover removed.
  - It may cause the battery to come off, or may cause a malfunction or damage.
- Do not put an extremely thick sticker etc. on the display or keypad.
  - May cause malfunction.
- Do not turn FOMA terminal OFF while using microSD card.
  - It may cause data loss or malfunction.

## ◆ Battery pack

- The battery pack is a consumable part.
  - Replace the battery pack if FOMA terminal has extremely short operation time on a full charge, though it may vary by operating conditions. Purchase a new battery pack of the specified type.
- Charge the battery in an area within the proper ambient temperature range (5-35 °C).
- Always charge before using it for the first time or after extended disuse.
- The operation time provided by the battery pack varies by the operating environment and battery pack's deterioration.
- The battery pack may swell out as it comes to near the end of its lifetime depending on the usage conditions, but it is not a problem.
- Do not preserve or leave the battery pack as it is empty.
  - It may cause the battery pack performance to be degraded or its lifetime to be shortened.

## ◆ Adapter (including battery charger)

- Charge the battery in an area within the proper ambient temperature range (5-35 °C).
- Do not charge the battery in the areas below.
  - In areas of excessive humidity, dust or vibrations
  - Near land-line phones or TVs/radios
- It is normal for the adapter (including battery charger) to become warm while charging. Continue to use it.
- When using the DC adapter for charging, keep the vehicle engine running.
  - The vehicle's battery could become flat.
- When using an outlet with a mechanism preventing unplugging, follow the handling instructions for that outlet.
- Do not give strong shock. Do not deform the charging jack.
  - May cause malfunction.
- When folding the desktop holder, take care to avoid catching your fingers or adapter cables (including the charger cord) in the holder.
  - May cause injuries or damage.

## ◆ UIM

- Do not use excessive force to install/remove UIM.
- It is normal for UIM to become warm during use. Continue to use it.
- Note that DOCOMO assumes no responsibility for malfunctions occurring as the result of inserting and using a UIM with another IC card reader/writer.
- Always keep UIM ICs clean.
- Clean UIM with a soft, dry cloth (such as a cloth for eyeglasses).
- Maintain a separate record of the data you saved in UIM.
  - If the data is deleted, DOCOMO assumes no responsibility for the loss of any data.
- To preserve the environment, bring the old UIM to a sales outlet such as DOCOMO Shop.
- Avoid extreme temperature.
- Take care not to scratch, touch accidentally or short IC.
  - May cause data loss or malfunction.
- Do not drop UIM or subject it to shocks.
  - May cause malfunction.
- Do not bend UIM or place heavy objects on it.
  - May cause malfunction.
- Do not install UIM into FOMA terminal with a label or sticker put on UIM.
  - May cause malfunction.

## ◆ FeliCa reader/writer

- FeliCa reader/writer function of FOMA terminal uses weak waves requiring no licenses for radio stations.
- It uses 13.56 MHz frequency band. When using other reader/writers in your surroundings, keep FOMA terminal away sufficiently from them. Before using the FeliCa reader/writer, confirm that there are no radio stations using the same frequency band nearby.

## ◆ CAUTION

- Do not use a remodeled FOMA terminal. Using a remodeled terminal violates the Radio Law.

FOMA terminal is certified according to technical standard conformance of specified wireless equipment based on the Radio Law, and as a proof of it, the "Technical Compliance Mark" is depicted on the engraved sticker of FOMA terminal.

If you remodel FOMA terminal by removing its screws, your certification of technical standard conformance becomes invalid.

Do not use FOMA terminal with its certification of technical standard conformance invalid as it violates the Radio Law.

- Be careful when you use FOMA terminal while driving a car etc. Using a mobile phone while driving is subject to penal regulations. If you inevitably receive a call, tell the caller that you will "call back" by handsfree, then park in a safe place and call back.
- Use FeliCa reader/writer function only in Japan. FeliCa reader/writer function of FOMA terminal conforms to Japanese radio standards. If you use this function overseas, you may be punished.

## Waterproofness

**F-04A is waterproof to IPX5 (former JIS protection code 5)\*<sup>1</sup> and IPX7 (former JIS protection code 7)\*<sup>2</sup> standards if the external connection jack cap is strictly closed as well as the back cover is mounted and locked.**

- \*1 IPX5 means that F-04A phone keeps functioning after directly applying a jet flow of 12.5 L/min. for at least 3 minutes from a distance of 2.5-3 m on a rotating turntable.
- \*2 IPX7 means that F-04A phone keeps functioning after it is slowly submerged to depth of 1 m in static tap water at room temperature, left there for 30 minutes and then taken out.

## ◆ Advantages in actual operation

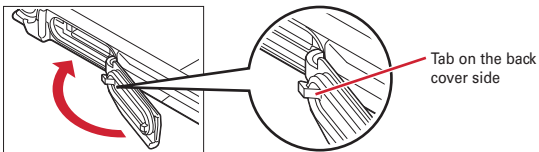
- You can talk or watch 1Seg programs without using an umbrella in the rain (for rainfall of 20 mm or less per hour).
  - \* When your hands or FOMA terminal are wet, avoid installing/removing the back cover or opening/closing the external connection jack cap.
- You can wash the FOMA terminal by submerging and moving it forth and back in still water in a basin etc.
  - \* When washing, use only your hands, not a brush or sponge, with FOMA terminal locked, the back cover installed and the external connection jack cap held in position.
- You can use the FOMA terminal in a poolside area. Do not put the terminal in the water of a swimming pool.
  - \* If FOMA terminal gets wet with water from the swimming pool, wash it as described above.
  - \* Do not use FOMA terminal underwater. May cause malfunction.
- You can use FOMA terminal in a bathroom. Do not put the terminal in the bathtub.
  - \* Never put FOMA terminal in hot spring water or water containing soap, detergent or bath powder.
  - \* Do not use FOMA terminal underwater. May cause malfunction.

## ◆ Important precautions

To keep the FOMA terminal waterproof, be sure to observe the points below.

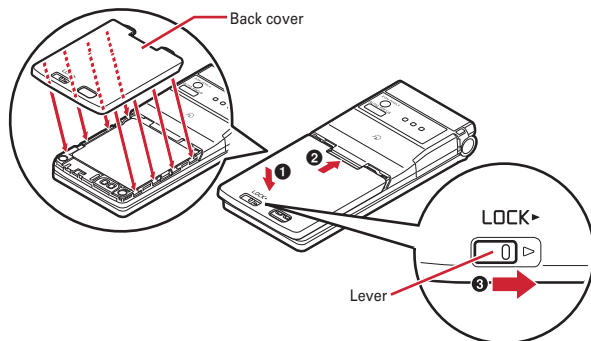
- Securely close the external connection jack cap and back cover.
- Make sure that the cap and back cover are completely closed without floating.
- Before using, make sure that the back cover lever is at the LOCK position.

### ■ Closing external connection jack cap



### ■ Installing back cover

Align 8 tabs of the back cover with concaves of FOMA terminal. While pressing the back cover in the direction of ① so that there is no gap between FOMA terminal and back cover, slide the back cover in the direction of ② to install, then slide the back cover lever in the direction of ③ to lock.



- Do not use FOMA terminal underwater (including opening/closing and keypad operations).

- Do not let FOMA terminal get wet with liquids other than water at room temperature.

### <Example>



Soap/Detergent/Bath powder



Ocean water



Swimming pool



Hot spring



Sand/Mud

To keep the FOMA terminal waterproof, replacement of parts is required every 2 years regardless of whether FOMA terminal appears normal or abnormal. DOCOMO replaces the parts as a chargeable service. Bring FOMA terminal to a sales outlet such as a DOCOMO Shop.

## ◆ Precautions

- Securely lock the back cover and firmly close the external connection jack cap. Even a fine obstacle (one hair, one grain of sand, tiny fiber, etc.) put between contact surfaces may allow water to enter.
- If FOMA terminal gets wet with water or other liquids with the external connection jack cap or back cover open, the liquid may get inside the terminal causing electric shocks or malfunction. Stop using FOMA terminal, turn the power OFF, remove the battery pack and contact a DOCOMO-specified repair office.
- The external connection jack cap and the rubber packing of the inner lid play an important role for keeping waterproof. Do not remove or scratch them. Also, prevent dust from adhering to them.
- Do not leave water on FOMA terminal. In a cold region, water may freeze causing malfunction.

- Do not apply water flow stronger than allowed (e.g., such water flow that gives you pain when applied to your skin directly from a faucet or shower). May cause malfunction though F-04A provides waterproof performance of IPX5.
- Do not wash FOMA terminal in a washing machine etc.
- Accessories and optional devices are not waterproof.  
When watching 1Seg etc. with FOMA terminal installed in the desktop holder, do not use it in a bath room, shower room, kitchen or lavatory even if it is not connected to the AC adapter.
- Do not put FOMA terminal in hot water, use it in a sauna or apply hot airflow (from a hair dryer etc.) to it.
- Never try to charge the battery pack when FOMA terminal is wet.
- Do not poke the microphone, earpiece or speaker with a swab or sharp object. May damage the waterproof performance.
- Do not leave FOMA terminal wet. May short-circuit the power jacks.
- FOMA terminal does not float on water.
- Do not let FOMA terminal fall. It may become scratched causing the waterproof performance to degrade.
- If the back cover is damaged, replace it. Water may enter inside from a damaged section causing troubles such as electric shocks or corrosion of the battery.
- Do not leave water on the microphone, earpiece or speaker. Such water may interfere with talking.

DOCOMO does not guarantee actual operations under all states. Malfunctions deemed to be caused by inappropriate operation by the customer are not covered by the warranty.

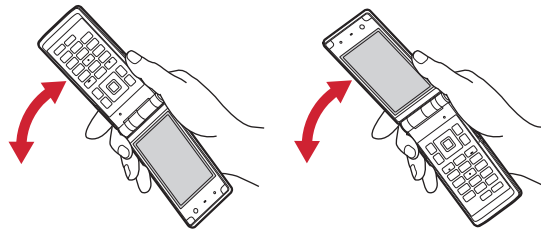
### ◆ Draining water when the FOMA terminal gets wet

When FOMA terminal is wet, water may flow out after wiping it off; drain the water following the steps below.

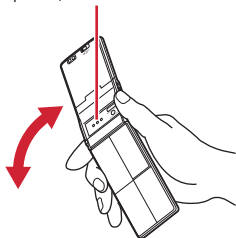
- ① Wipe FOMA terminal surface with dry, clean cloth etc.



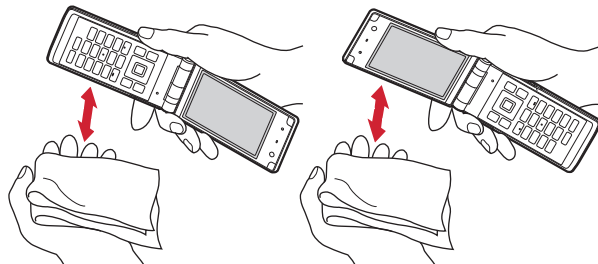
- ② Shake FOMA terminal approximately 20 times, firmly holding its hinge section, until there is no more water splattering.



To drain water off the speaker, shake FOMA terminal with the speaker upward



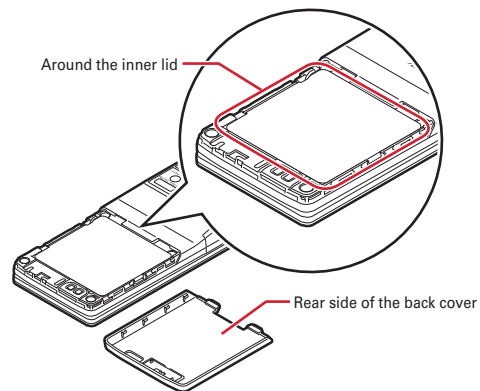
- ③ Softly press dry, clean cloth etc., against FOMA terminal to wipe off water remaining in the microphone, earpiece, speaker, keys or hinges.



- ④ Remove the back cover and wipe off any drops of water around the inner lid and the rear side of the back cover. After wiping off the water, install and lock the back cover.

Removing back cover → P42 ■ Attaching ① in "Attaching/Removing battery pack"

\* Never open the inner lid.



- ⑤ Wipe off water drained from FOMA terminal with dry, clean cloth etc.

\* Water, if any, remaining in FOMA terminal may ooze up after wiping off.

\* Do not wipe off water remaining in concaves directly with a cotton swab etc.