



# F-02C

INSTRUCTION MANUAL '10.11

docomo **STYLE** series

# DOCOMO W-CDMA, GSM/GPRS System

Thank you for purchasing "docomo STYLE series F-02C" mobile terminal.


Before using F-02C, read this manual to ensure safe use and handling.

## Instruction manuals for F-02C

The operations of F-02C are described in this manual, "使いかたガイド (Guide)" (installed in FOMA terminal) and "Instruction manual (detailed version)" (in pdf format).




### Instruction manual (this manual)

This manual provides information about screens and operations of basic functions.

\*  is index term for "使いかたガイド (Guide)".

### "使いかたガイド (Guide)" (installed in FOMA terminal)

This guide provides overviews and operations of frequently-used functions. (In Japanese only)

In F-02C Stand-by display,  ▶  Tool ▶  Guide ▶ Select a search method

### "Instruction manual (detailed version)" (in pdf format)

This manual provides detailed information and operations of all the functions. (In Japanese only)

<From a PC> This manual can be downloaded from NTT DOCOMO website.

<http://www.nttdocomo.co.jp/support/trouble/manual/download/index.html>

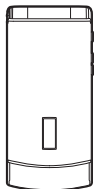
\* The URL and contents are subject to change without prior notice.

- In this "F-02C INSTRUCTION MANUAL", "F-02C" mobile terminal is usually referred to as "FOMA terminal".
- The images or illustration used in this manual are examples. They may differ from the actual displays.
- The images used in this manual assume that Kisekai Tool is set to "White" and Color theme setting is set to "White".
- In this manual, "authenticate" indicates the operating procedure for entering the terminal security code in 4-8 digits (⇒P37) or performing fingerprint authentication (⇒P38).

## Basic package

### F-02C

(including Back Cover F54 and warranty)



### Battery Pack F19



### CD-ROM for F-02C



### Feeling piece F01



\* Two different design feeling piece F01 are included.

### Feeling piece case (sample)

### Desktop Holder F30



\* Desktop Holder F30 is made of recycled ABS from used products.

### Instruction manual



Compatible options ⇒PXX

- Unauthorized copying of parts of or this entire manual is prohibited.
- The contents in this manual, URL and contents are subject to change without prior notice.

# Contents

## Introduction

FOMA terminal .....	2
What you can do with F-02C .....	3
Part names and functions .....	4
Attaching/Removing Feeling piece .....	6
Using the Open assist button .....	6
Precautions (ALWAYS FOLLOW THESE DIRECTIONS) .....	7
Handling precautions .....	14
Waterproofness/Dustproofness.....	17

## Basic Operation



Before Using.....	22
Screen Explanation.....	25
Character Entry .....	29
Sound/Screen Setting.....	31
Lock/Security .....	37

## Connect



Call Telephone.....	55
Mail.....	64
Phonebook.....	68

## Search



i-mode/Full Browser .....	73
i-Channel .....	77
Map/GPS.....	78

## Enjoy



Camera .....	84
1Seg.....	86
Music .....	88
i-appli .....	90
i-motion/Movie.....	91

## More Convenient



Osaifu-Keitai .....	95
i-concier .....	96
Convenient tools .....	98
Data Management.....	103

## Others

Support .....	111
Appendix.....	120
Index.....	135

## Introduction

## Basic Operation

## Connect

## Search

## Enjoy

## More Convenient

## Others

# FOMA terminal

- Because your FOMA terminal uses wireless transmission, it may not function in locations where it is difficult for radio waves to penetrate, such as tunnels, underground passages and some buildings, in areas where radio waves are weak, or out of service area. Even when you are high up in a tall building or condominium and nothing blocks your view outside, your FOMA terminal may not be able to receive or transmit signals. Also, communication may be interrupted even when the signal meter on your FOMA terminal indicates there are strong radio waves and you are not moving (traveling).
- Use your FOMA terminal in a way that does not disturb others in public spaces, crowded locations or quiet places.
- Because your FOMA terminal uses radio waves to communicate, it is possible that a third party may attempt to tap your calls. However, the W-CDMA, GSM/GPRS system automatically applies a confidential communication function to all calls, so even if a third party could somehow tap a call, they only hear noise.
- Your FOMA terminal encodes voice communication as digital data. When you are operating your FOMA terminal while moving to a location subject to weaker radio wave conditions, the transmitted digital data may not be correctly decoded and as a result the decoded voice may differ somewhat from the actual voice.
- Maintain a separate record of the data (Phonebook, Schedule, Note, Recorded messages, Voice memos, Moving picture memos, etc.) you registered in your FOMA terminal. Note that DOCOMO assumes no responsibility for any loss of saved contents of data resulting from malfunction, repair, changing of the model or other handling of FOMA terminal.
- You are recommended to save important data to microSD card. Using DOCOMO keitai datalink, you can transfer and save phonebook, mail, schedule and other data to a PC.
- The user hereby agrees that the user shall be solely responsible for the result of the use of SSL/TLS. Neither DOCOMO nor the certifier as listed herein makes any representation and warranty as for the security in the use of SSL/TLS. If the data should be erased, DOCOMO assumes no responsibility for the loss of any data.  
Certifier : VeriSign Japan K.K., Cybertrust Japan Co., Ltd., GlobalSign K.K., RSA Security Japan Ltd., SECOM Trust Systems Co., Ltd., Comodo CA Ltd., Entrust, Inc., Go Daddy, Inc.
- This FOMA terminal supports FOMA Plus-Area and FOMA HIGH-SPEED Area.
- FOMA terminal can be used only via the FOMA network provided by DOCOMO and DOCOMO's roaming area.

# What you can do with F-02C

## AUTO-GPS

79

The AUTO-GPS function allows for useful services that deliver information about the weather or shops around where you are, or sightseeing information. (In Japanese only)



## 使いかたガイド (Guide)

26

This function allows you to learn operations you want to use on the FOMA terminal. Without the instruction manual at your hand, you can check the operations readily.



## i-concier

96

i-concier is a service to use the FOMA terminal conveniently in which a character on the stand-by display (Machi-chara) notifies you of useful information (Information) and schedules (i-schedule) can be downloaded automatically from a site. (In Japanese only)



## International Roaming (WORLD WING)

62

While staying overseas, you can use the same FOMA terminal, phone number and mail address as those used in Japan (3G/GSM area supported).



## Waterproofness/Dustproofness

17

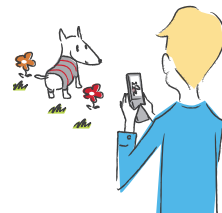
Waterproofness of IPX5 and IPX8 (which exceeds IPX7) and dustproofness of IP5X are provided by firmly closing the external connection jack cap and HDMI connection jack cap and installing the back cover in a locked state.



## High functionality camera

83

Camera offers approximately 12,2 million pixels (effective pixels) and a lot of high functionality like digital camera.



# Part names and functions

Part names of F-02C and major functions assigned to each part are as follows.

## 1 Humidity/Temperature sensor

\* To measure accurately, do not cover it.

## 2 Sub-camera

Shoot your own image or send your own image via videophone call.

## 3 Display⇒P25

## 4 Microphone

\* Do not cover it during a call or recording sound.

## 5 MENU key

Display the menu

## 6 Mail/Character key

Display the mail menu, or switch text input modes

## 7 CLR/ ch/Clear key

Display i-Channel, or return to the previous screen

## 8 Start a voice call key

Start a voice call

## 9 - Keypads

Enter phone number or characters, or select menu item

## 10 \*/Public mode (Drive mode) key

Enter "\*" or voiced/semi-voiced sound, or start/cancel Public mode (Drive mode)

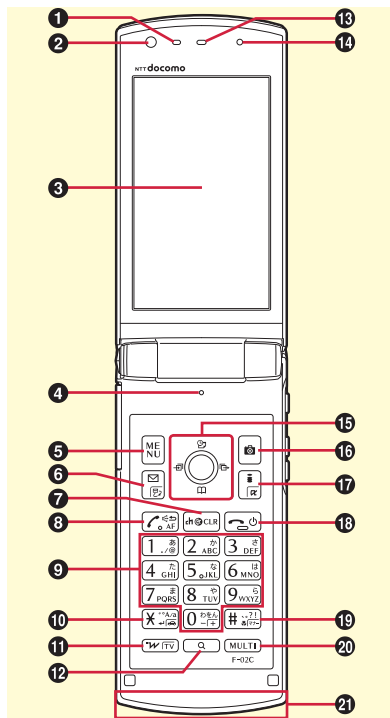
## 11 i-Widget/TV key

Start/Exit i-Widget, or watch 1Seg

## 12 Search key

Activate Quick search

## 13 Earpiece





## 14 Light sensor


\* Sense ambient brightness and adjust screen backlight automatically. Do not cover with hand or put a sticker on it.

## 15 Multi-cursor key

Move the cursor, or operate menu

 : Perform an operation.

 : Display Schedule, or adjust sound volume

 : Display Phonebook, or adjust sound volume

 : Display Received calls.

 : Display Redial.

\* 8-direction operations are available depending on functions.

## 16 Camera key

Start the still camera/movie camera shooting

## 17 i-mode/i-appli key

Display iMenu or i-appli folder

## 18 Power/End key

Turn ON/OFF FOMA terminal, or exit a running function

## 19 #/Silent mode key

Enter "#" or punctuation, or start/cancel Silent mode

## 20 Multitask key

Perform another function during a call or operation, or activate/deactivate Privacy view.

## 21 1Seg antenna

\* The antenna is positioned here when the terminal closed. Whole terminal receives signals when it is opened.⇒P86

**22 Charging light****23 Indicator light**

Turn on/blink to notify various status such as incoming call or mail, shooting still image/moving picture, etc.

**24 Sub-display****25 Feeling piece attaching part****26 FOMA antenna (built-in)**

\* For a call in better conditions, do not cover the antenna with your hand.

**27 Main-camera**

Shoot still image/moving picture, or send an image via videophone

**28 Fingerprint sensor**

Register fingerprint and authenticate

**29 Infrared data port**

Infrared communication, infrared remote control function

**30 Speaker**

Hear ring alert or voice of the caller with the handsfree function ON

**31 Mark**

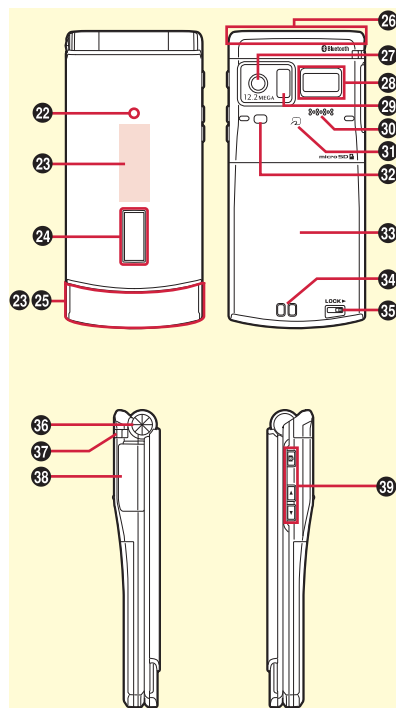
Use Osai-fu-Keitai, or send/receive data via iC transmission

**32 Light/Shooting light**

Camera light

**33 Back cover**

\* To access docomo UIM slot and the microSD card slot, remove the back cover and the battery pack.

**34 Charging jack****35 Back cover lever**

\* Firmly install the back cover and lock it with the lever before using to avoid water seepage.

**36 Open assist button**

Press this button to open the FOMA terminal.

**37 Strap opening****38 External connection jack**

Connect optional AC adapter, DC adapter, FOMA USB Cable with Charge Function, Earphone Plug Adapter for External connector terminal etc.

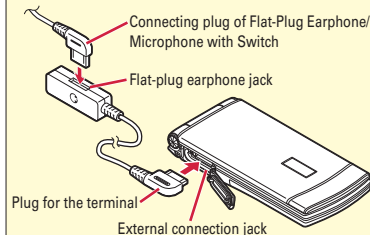
**39 Side camera key**

Activate Still image shooting, record a video during 1Seg watching, or stop ring alert, alarm sound or vibrator

**▲ ▼ Side up/down keys**

Adjust the volume, turn on the sub-display backlight, switch views

▶ for activate Record message/Voice memo, ▢ for checking i-mode Center, etc.

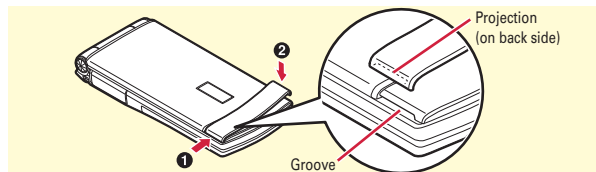
**Example of connecting Flat-Plug Earphone/Microphone with Switch (optional)**


## Attaching/Removing Feeling piece

By attaching accessory Feeling piece, you can change the outer appearance readily by the various scene or add differences in vision when the light turns on or blinks.

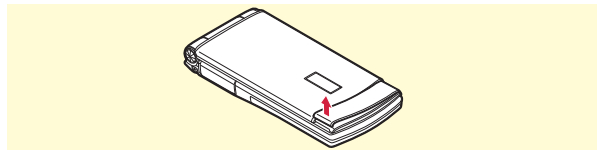
### ✦ Attaching

Align the groove on the FOMA terminal with the projection of Feeling piece and hold in the direction ①, then align the other sides and push in the direction ② until it clicks.



### ✦ Removing

Hold the end of Feeling piece up in the direction of the arrow mark and remove it.



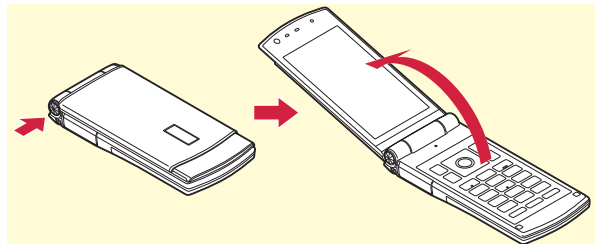
### ✦ Important precautions

- It is recommended to store the Feeling piece in the attached dedicated case to prevent from damage or loss
- Do not make a major impact on the Feeling piece or give excessive force when attaching/removing. It may cause deform or damage the Feeling piece.

## Using the Open assist button

You can open the FOMA terminal easily just by pressing the dedicated button.

- Even without using the button, the FOMA terminal can be opened easily with light force.



### Point

- It is recommended to hold the FOMA terminal in your hand for the operation. Be careful not to hit your face, people or objects when opening the FOMA terminal or not to drop the FOMA terminal by the rebound when opening.
- Depending on the orientation, the FOMA terminal may not be opened completely even by pressing the button.
- Close the FOMA terminal with your hand. If the FOMA terminal is not closed completely, once open it completely and then close it.