

Waterproofness/Dustproofness

F-02D provides waterproofness of IPX5*1, IPX8*2 and dustproofness of IP5X*3 with firmly closing the external connection jack cap and installing the back cover in a locked state.

- *1 IPX5 means that a phone keeps functioning after applying a jet flow of 12.5 L/min. from every direction from a distance of approximately 3 m for at least 3 minutes using water nozzle in 6.3 mm inner diameter.
- *2 For F-02D, IPX8 means that a phone keeps functioning after F-02D is slowly submerged to depth of 1.5m in static tap water at room temperature, left there for 30 minutes and then taken out, and the mobile phone keeps shooting still images or moving pictures in approximately 30 minutes in static tap water at room temperature.
- *3 IP5X means a protection degree that a phone keeps functioning and safety after it is placed in a device with dust in diameter 75 μ m or less for 8 hours, agitated and then taken out.

❖ What you can do with waterproofness of F-02D

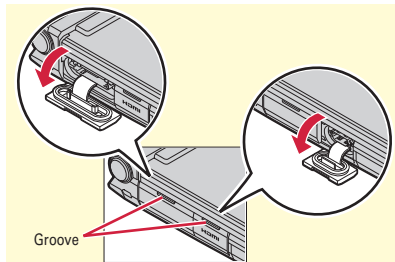
- **You can talk or watch 1Seg programs without using an umbrella in the rain (for rainfall of 20 mm or less per hour).**
 - When your hands or FOMA terminal are wet, avoid installing/removing the back cover or opening/closing the external connection jack cap.
- **You can also shoot still images and moving pictures in the pool depth of 1.5 m.**
 - Do not perform other operations underwater than shooting still images and moving pictures.
 - If you put the terminal in water of swimming pool, be sure to have it within 30 minutes.

- If FOMA terminal gets wet with water from the swimming pool or soak in water of swimming pool, wash it in specified procedure (\Rightarrow P23).
- **You can use FOMA terminal in a bathroom.**
 - Do not put the terminal in the bathtub. Do not use the terminal in hot water. May cause malfunction.
 - Never put FOMA terminal in hot spring water or water containing soap, detergent or bath powder.

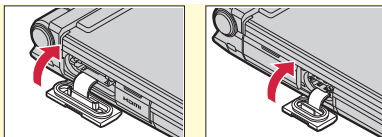
To ensure waterproofness/dustproofness

To avoid water/dust ingress, be sure to observe the following points.

- Do not throw any liquid other than room-temperature tap water on FOMA terminal, or soak it in such liquid.
- When using the external/HDMI connection jack, put your finger into the groove as shown then pull the cap up in the direction of the arrow.



After using the external/HDMI connection jack, close the cap as the direction shown in the illustration, and make sure that the cap is completely closed without slack by pushing the tabs in.



- For installing the back cover, see "Installing back cover" of "Attaching miniUIM/battery pack". ⇒ P26
- Securely lock the back cover and firmly close the external connection jack cap. Even a fine obstacle (one hair, one grain of sand, tiny fiber, etc.) put between contact surfaces may allow water to enter.
- Do not poke the microphone, earpiece or speaker with a swab or sharp object.
- Do not let FOMA terminal fall. It may become scratched causing the waterproof/dustproof performance to degrade.
- The external connection jack cap and the rubber packing of the rear side of the back cover play an important role for keeping waterproof/dustproof performance. Do not deform the back cover by twisting etc. or peel off or damage the rubber packing. Also, prevent dust from adhering to it.

● ● ● ●
To keep FOMA terminal waterproofness/dustproofness, replacement of parts is required every 2 years regardless of whether FOMA terminal appears normal or abnormal. DOCOMO replaces the parts as a chargeable service. Bring FOMA terminal to a sales outlet such as a DOCOMO-specified repair office. ● ● ● ●

Important precautions

Do not perform actions shown in the illustrations below.

<Example>



Observe the following precautions to use FOMA terminal properly.

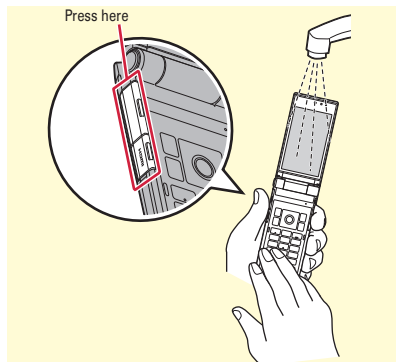
- Accessories and optional devices are not waterproof/dustproof. When watching 1Seg etc. with FOMA terminal installed in the included desktop holder, do not use it in a bathroom, shower room, kitchen or lavatory even if it is not connected to the AC adapter.
- Do not apply water flow stronger than allowed (⇒ P21) (e.g., such water flow that gives you pain when applied to your skin directly from a faucet or shower). F-02D provides IPX5 waterproof performances. However, it causes malfunction.
- If FOMA terminal gets wet with salt water, sea water, refreshing beverage or mud or soil adhered, wash it immediately. If they dry out, it is hard to remove the dirt and it may cause damage or malfunction.
- Do not put FOMA terminal in hot water, use it in a sauna or apply hot airflow (from a hair dryer etc.) to it.

- Do not move in water or slam the terminal against the surface of water with FOMA terminal opened.
- If you put the terminal in tap water or in water of swimming pool, be sure to have it within 30 minutes.
- When you use the terminal in swimming pool, obey rules of the facility.
- FOMA terminal does not float on water.
- Do not leave water on FOMA terminal. May short-circuit the power jacks, or in a cold region, water may freeze causing malfunction.
- Do not leave water on the microphone, earpiece or speaker. Such water may interfere with talking.
- Do not leave water on the temperature/humidity sensor. Measuring temperature and humidity may not be correct.
- If the back cover is damaged, replace it. Water may enter inside from a damaged section causing troubles such as electric shocks or corrosion of the battery.
- If FOMA terminal gets wet with water or other liquids with the external connection jack cap or the back cover open, the liquid may get inside the terminal causing electric shocks or malfunction. Stop using FOMA terminal, turn the power OFF, remove the battery pack and contact a DOCOMO-specified repair office.
- If the external connection jack cap, or the rubber gasket on the rear side of the back cover is damaged or deformed, replace it at DOCOMO-specified repair office.

● ● ●
 DOCOMO does not guarantee actual operations under all states. Malfunctions deemed to be caused by inappropriate operation by the customer are not covered by the warranty.

Washing FOMA terminal

With pressing and holding the external connection jack cap not to open, wash the terminal in tap water without rubbing hard

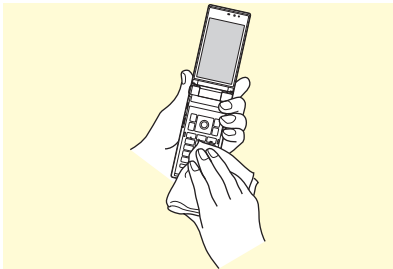


- Do not apply water flow stronger than allowed (⇒P21) (e.g., such water flow that gives you pain when applied to your skin directly from a faucet or shower).
- In locked state with the back cover attached, with pressing and holding the external connection jack cap not to open, wash the terminal in tap water in room temperature without rubbing hard.
- Do not use brush, sponge, soap, detergent, etc.
- If mud or soil is adhered to the terminal, do not open, close or rotate the terminal. Eliminate the dirt first by shaking several times in tap water of wash-basin and then wash the terminal with running water.
- After washing, wipe the surface with dry cloth well, drain water by the following procedure and let the terminal dry naturally.

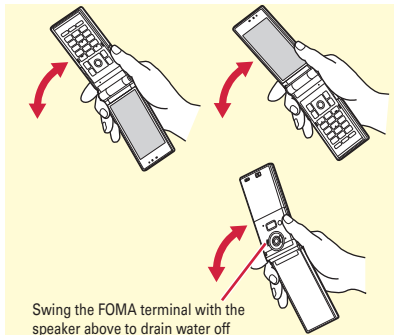
Draining water from FOMA terminal

When FOMA terminal is wet, water may flow out after wiping it off; drain the water in the following steps.

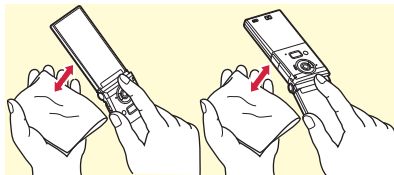
- 1 Wipe off moisture on FOMA terminal surface with dry, clean cloth etc.



- 2 Shake FOMA terminal approximately 20 times, firmly holding its hinge section, until there is no more water splattering.



- 3 Press lightly FOMA terminal against dry, clean cloth etc. to wipe off water remaining in the microphone, earpiece, speaker, keypad, hinges or charging jack, etc.



- 4 Wipe off water drained from FOMA terminal with dry, clean cloth etc., and dry naturally.
 - Water, if any, remaining in FOMA terminal may ooze up after wiping off.
 - Do not wipe off water remaining in gaps directly with a cotton swab etc.

Charging

Check the following before and after charging.

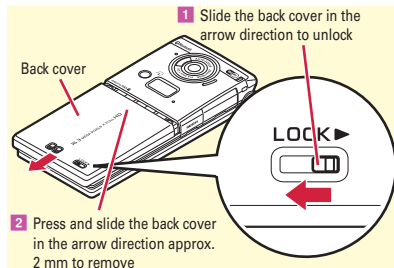
- Check if FOMA terminal is not wet. Never try to charge the battery pack when FOMA terminal is wet.
- Accessories and optional devices are not waterproof/dustproof.
- When charging the battery when or after FOMA terminal is wet, adequately drain it and wipe off water with a dry, clean cloth etc., before connecting the accessory desktop holder or opening the external connection jack cap.
- When the external connection jack cap is opened for charging, close the cap firmly after charging. It is recommended to use the desktop holder for charging to prevent water from seeping inside from the external connection jack.
- Do not use the AC adapter or desktop holder in a bathroom, shower room, kitchen, lavatory or other highly humid area. May cause fire or electric shock.
- Do not touch the AC adapter or desktop holder with wet hands. May cause electric shock.

Before Using

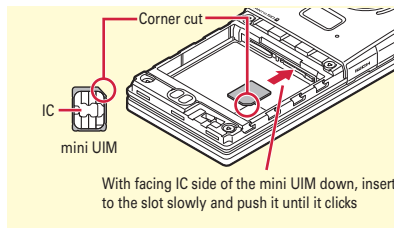
Attaching miniUIM/battery pack

After turning power OFF, close FOMA terminal and hold it in your hand so that you can properly attach UIM/battery pack.

❖ Removing back cover

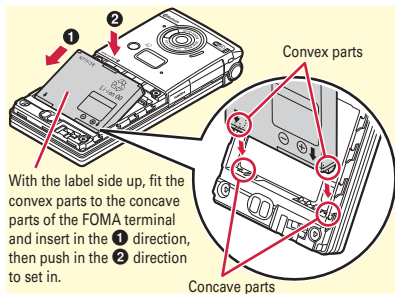


❖ Attaching miniUIM

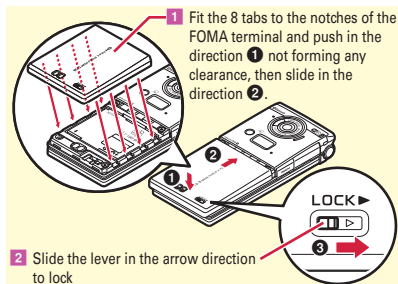
**Point**

- A UIM or FOMA card is not available for this FOMA terminal. Replace it with a miniUIM at a docomo Shop.

❖ Installing battery pack



❖ Installing back cover



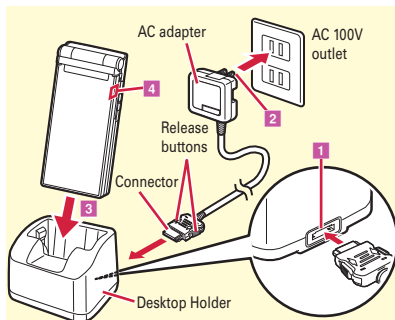
Before Using Charging

The battery pack does not have a full charge at time of purchase. Use AC adapter for FOMA terminal to charge the battery before using FOMA terminal.

Charging using desktop holder

- 1** Insert the connector of AC adapter horizontally to the accessory desktop holder, with the arrows mark side upward
- 2** Unfold the power plug and insert it into a 100V AC outlet
- 3** Close FOMA terminal and insert it into the desktop holder
- 4** Check that the charging light turns on

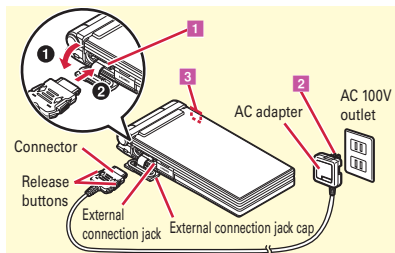
* After charging is completed, remove FOMA terminal from the desktop holder.



Charging using AC adapter

- 1** Open the external connection jack cap (①), hold the connector horizontally with the arrows side upward and insert it to the jack (②)
- 2** Unfold the power plug and insert it into a 100V AC outlet
- 3** Check that the charging light turns on


* When charging is over, pull out the power plug from the outlet, and pull out from FOMA terminal horizontally while pressing the release buttons on both sides of the connector.



Before Using

Power ON - Default setting



Initial setting is an operation when FOMA terminal is turned ON for the first time.

1  (2 sec. or more)


The Initial setting screen appears.

2 **Set required items**  [Complete]

If you exit without setting Change security code and Request permit/deny., Initial setting screen reappears when the power is turned ON the next time.


3 **On a confirmation screen of software update function,**  **On the confirmation screen of Error info send set.,** 

The stand-by display appears.

When a Machi-chara asks your name (user name), press  twice to enter a user name.

Point

- If no operation is performed, the display light is automatically turned off according to the settings in Light time-out or eco mode setting. The display light turns on again if there is any operation or incoming call.
- The battery usage state is automatically recorded while using the FOMA terminal. The record is used only for repair diagnosis.

Turning power off :  (2 sec. or more)

Changing the initial setting : [MENU]  [8] [9] [2]






Changing screen display to English :

[MENU]  [8] [4] [4]  Select "English"

Before Using

Caller ID notification

Set whether to notify your phone number (caller ID) to the other party's terminal when making a voice call. Caller ID notification is set to "ON" at the time of subscription.

1 [MENU]  7 TEL function  4 Dial/Receive call setting  3 Caller ID notification  2 Setting  1 ON or 2 OFF**Point**

- If you hear an announcement of requesting caller ID when making a call, set Caller ID notification or add prefix "186" to the phone number to call again.

Before Using




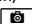
Checking Profile


Check a model name or own phone number.

1 [MENU]  0 Profile

User information screen appears.

Point

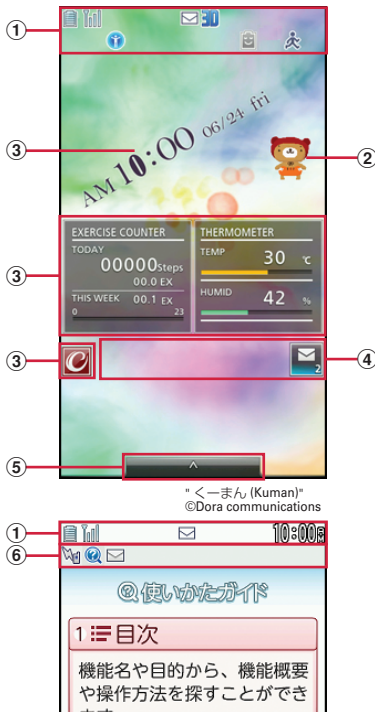
- Editing the profile :** On User information screen,   Authenticate  Set required items 
- On the profile edit screen, select first mail address then select "Acquire Auto" to obtain your mail address from the i-mode center. For details of changing a mail address, refer to "Mobile Phone Users Guide [i-mode] FOMA version".

Checking a phone number during a call : [MULTI]  0

Screen Explanation

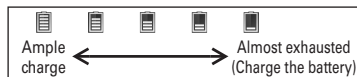
Viewing display

New arrival information and current state can be checked by the icon appearing on the screen.
Major icons are as follows.

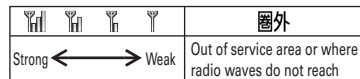


① Status area

Status icons are displayed. Select an area to display the status menu.⇒P31
Battery level (Battery icon)



Signal strength (Antenna icon)



SELF : Self mode ON

: In data transfer mode

: Connecting to i-mode

: Display off lock setting in Auto-key lock is set

: Infrared communication in operation

: Bluetooth ON

: The total calls cost exceeds the limit

: Communication using handsfree-compatible device in progress

: Handsfree ON

: Femtocell available

: Touch operation OFF

: Positioning with GPS

: Location request setting

: Connecting to Wi-Fi





























: Unread Area Mail exists

: In-area auto-send mail exists

: Unread i-mode mail exists

: Arrival i-concier information exists

: Unreceived i-mode mail exists in the Center

-  : Using Smart Browser
-  : 3D setting is ON
-  : A phonebook entry, memo or schedule has secret attribute
-  : Music&Video Channel program obtaining reservation exists
-  : High-pitched alarm is "ON"
-  : Kid-safe mode ON
-  : During i-αppli operation
-  : i-αppli call exists
-  : Communication mode ON (USB cable connected)
-  : Alarm is set
-  : 1Seg watching/recording reserved or alarm of Memo is set
-  : Inside OFFICEED area
-  : Manner mode ON
-  : Call alert volume OFF
-  : Vibration mode for voice call ON
-  : In Public mode (Drive mode)
-  : Manner support ON
-  : Record message setting ON
-  : Keypad dial lock ON
-  : Personal data lock ON
-  : IC card lock ON
-  : Recording 1Seg in the FOMA terminal
-  : eco mode ON
-  : microSD card inserted
-  : Connected to external device using USB cable
-  : Pedometer/ACT monitor is set
-  : Software update rewrite notice
-  : Auto-update of latest pattern definition failure

② Machi-chara

Characters moving about the screen and giving messages. In addition to the preinstalled characters, you can obtain characters by downloading.



③ Widget for Stand-by disp layout

Clock, weather forecast, thermo-hygrometers (TempHmd), Pedometer/Physical Activity Monitor, Calendar, Schedule, Memo, i-Channel ticker, graffiti pasted on the stand-by display. Touch and hold the screen for 1 second or more to display stand-by elements palette/stand-by handwriting palette, and edit freely with touch or slide operations. You can move arrival information icons.

④ New arrival



Starting from the left, i-αppli call, unread ToruCa, missed call, recorded message, message in voice mail service, unread mail

Select an arrival information etc. on the stand-by display using  and  to quickly display the corresponding information (Focus mode).

⑤ Short cut icons (vertical view)/Function key (horizontal view)

On the stand-by display (vertical view), select a shortcut icon to activate a function. On the stand-by display (horizontal view), select a function key to display menu, activate phone, mail or Quick search.

⑥ Task area

Icons indicating running features (tasks) appear.

Screen Explanation

Basic operations for screen and keys

Menu operation

On the stand-by display, select **[MENU]** and then perform the functions from the menu. You can select a menu item with shortcut operations, which use the keypad, etc. or with multi-cursor operation, which uses the multi-cursor key to move the cursor.

<Example> Selecting "Calculator"

Shortcut operations

1 **[MENU]** ▶ **[6]** ▶ **[2]**

Multi-cursor key operations

1 **[MENU]** ▶ Move the cursor to "6 Tool" ▶
[OK] ▶ Move the cursor to
 "2 Calculator" ▶ **[OK]**

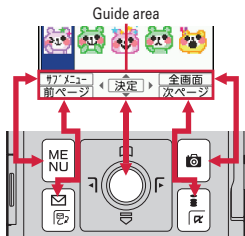
Point

- To return to the previous screen, press **[CLR]**. To return to the stand-by display, press **[]**.

Guide area

Operations that can be performed by pressing **[MENU]**, **[]**, **[]**, and **[]** are displayed in the guide area.

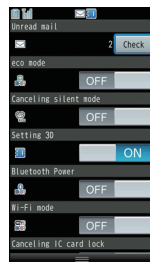
* Terms indicated with [] in the instructions of



this manual are items displayed in the guide area.

Status menu

Select status area to display the status menu. You can check the status and change the settings from the status menu.



Flick operation on the stand-by and MyFACE

In the right and left area of the stand-by display (vertical), up to 12 MyFACEs downloaded from sites, etc. can be pinned. Flick left or right on the stand-by display (vertical) to display MyFACE and flick left or right on the stand-by displays (horizontal) to display Redial/Received calls. And flick the screen upwards to display shortcuts list and flick downwards to display phonebook.

Screen Explanation

Using touch panel

Notes for using the touch panel

- The touch panel is designed for being touched lightly with fingers. Do not push it forcibly with a finger or press it with sharp objects such as nail, ballpoint pen, pin, etc.
- Touching the touch panel may not work in the following cases. Note that it may cause malfunction.
 - Operation with gloved hands
 - Operation with tip of fingernail
 - Operation with a foreign object on the display
 - Operation with protective sheet or seal on the display
 - Operation with wet hand
 - Operation under water
- Do not press forcibly the frame part around the display. The touch panel may malfunction.

Point

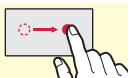
- Depending on the operation or function, effective range for the touch operation may be different or invalid.

Basic operation on the touch panel

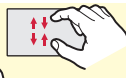
Tap	Touch the display lightly once and release the finger. The operation becomes effective when you release your finger from the display. This operation is mainly for selecting menus, items, etc. On the smart browser screen, quickly tap twice (double-tap) to zoom in/out.
Touch (1 sec. or more)	Touch the display for 1 sec. or more and release the finger. Some operations require to perform the subsequent action with your finger kept touching the screen.
Drag	Keep touching an item or icon on the display, move your finger to the desired direction. This operation is used for moving items or entering handwriting characters.
Slide	Keep touching the display, move your finger up/down/right/left. This operation is used for scrolling screen.
Flick	Touch the screen and flick away. This operation is for switching pages or images, or moving to a different chapter or tune, etc.
Pinch	While touching the display with the two fingers, widen and narrow the spacing between the fingers. This operation is mainly for zooming in/out the display.



Example: Touch



Example: Slide




Example: Pinch

Screen Explanation


Voice quick start

When you do not know a desired menu of function or you want to activate the function quickly, the function can be activated by voice sound input from the stand-by display. (In Japanese only)

1 (1 sec. or more)

For the first activation, on the guidance screen, select "利用する (Use)" or press . From the second time, "それではどうぞ★★音声受付中★★" (Please go ahead★★ voice input available★★) is displayed.

2 Speak a function name toward the microphone within 10 seconds.

When a message "#もう一度お話しください" appears, press  and speak again.

When the voice input is recognized, the function activates. If the function is not identified, the keyword list of 使いかたガイド (Guide) appears.

Point

- Speak clearly with natural conversation speed.
- Depending on the environment or way of speaking, recognition result may vary.
- You can speak function name (電卓 (Calculator), ワンセグ (1Seg), etc.), keyword (計算 (calculation), テレビ (TV), アドレス交換 (address exchange), etc.) or combination of keywords (写真 見る (view photo), メール 問合せ (mail check), スケジュール 11月25日 (schedule 25th November), ○○さん*にメール (mail to Mr. ○○), etc.) to activate the function.

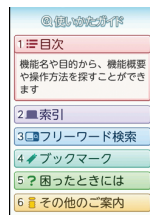
* Name registered to the phonebook

Screen Explanation

使いかたガイド (Guide)

You can check outline of function, operations or troubleshooting. (In Japanese only)

1 **6** **#** **Select a search method**



<Guide screen>

目次 (Contents) : Search from a list of functions.

索引 (Index) : Search from a list of words sorted according to Japanese syllabary.

フリーワード検索 (Free word search) : Enter a keyword to search for.

ブックマーク (Bookmark) : Search from a list of registered bookmarks.

困ったときには (Troubleshooting) : Search from lists of troubles or error messages.

其他のご案内 (More information) : Access to guide page introducing useful site.

Point

- On a description screen, select "この機能を使う (Use this function)" to perform a function. Selecting a link item in "関連機能 (related functions)" or "→コチラ (See more)" displays a corresponding description screen.

Appendix

Specific Absorption Rate (SAR) of Mobile Phones

This model F-02D mobile phone complies with Japanese technical regulations and international guidelines regarding exposure to radio waves. This mobile phone was designed in observance of Japanese technical regulations regarding exposure to radio waves (*)¹ and limits to exposure to radio waves recommended by a set of equivalent international guidelines. This set of international guidelines was set out by the International Commission on Non-ionizing Radiation Protection (ICNIRP), which is in collaboration with the World Health Organization (WHO), and the permissible limits include a substantial safety margin designed to assure the safety of all persons, regardless of age and health condition.

The technical regulations and international guidelines set out limits for radio waves as the Specific Absorption Rate, or SAR, which is the value of absorbed energy in any 10 grams of tissue over a 6-minute period. The SAR limit for mobile phones is 2.0 W/kg. The highest SAR value for this mobile phone when tested for use at the ear is 0.683 W/kg. There may be slight differences between the SAR levels for each product, but they all satisfy the limit.

The actual SAR of this mobile phone while operating can be well below that indicated above. This is due to automatic changes to the power level of the device to ensure it only uses the minimum required to reach the network. Therefore in general, the closer you are to a base station, the lower the power output of the device. This mobile phone can be used in positions other than against your ear. This mobile phone satisfies the international guidelines when used with a carrying case or a wearable accessory approved by NTT DOCOMO, INC.^{(*)2} In case you are not using the approved accessory, please use a product that does not contain any metals, and one that positions the mobile phone at least 1.5 cm away from your body.

The World Health Organization has stated that "a large number of studies have been performed over the last

two decades to assess whether mobile phones pose a potential health risk. To date, no adverse health effects have been established as being caused by mobile phone use."

Please refer to the WHO website if you would like more detailed information.

http://www.who.int/docstore/peh-emf/publications/facts_press/fact_english.htm

Please refer to the websites listed below if you would like more detailed information regarding SAR.

Ministry of Internal Affairs and Communications Website:

<http://www.tele.soumu.go.jp/e/sys/ele/index.htm>

Association of Radio Industries and Businesses

Website: <http://www.arib-emf.org/index02.html> (in Japanese only)

NTT DOCOMO, INC. Website: [http://](http://www.nttdocomo.co.jp/english/product/sar/)

www.nttdocomo.co.jp/english/product/sar/

FUJITSU LIMITED Website: <http://www.fmworld.net/product/phone/sar/>

*1 Technical regulations are defined by the Ministerial Ordinance Related to Radio Law (Article 14-2 of Radio Equipment Regulations).

*2 Regarding the method of measuring SAR when using mobile phones in positions other than against the ear, international standards (IEC62209-2) were set in March of 2010. On the other hand, technical regulation is currently being deliberated on by national council. (As of October, 2011)

Declaration of Conformity

● ● ●

The product "F-02D" is declared to conform with the essential requirements of European Union Directive 1999/5/EC Radio and Telecommunications Terminal Equipment Directive 3.1(a), 3.1(b) and 3.2. The Declaration of Conformity can be found on <http://www.fmworld.net/product/phone/doc/>.

● ● ●

This mobile phone complies with the EU requirements for exposure to radio waves.

Your mobile phone is a radio transceiver, designed and manufactured not to exceed the SAR^{*} limits^{**} for exposure to radio-frequency(RF) energy, which SAR^{*} value, when tested for compliance against the standard was 0.418 W/kg. While there may be differences between the SAR^{*} levels of various phones and at various positions, they all meet^{***} the EU requirements for RF exposure.

-
- * The exposure standard for mobile phones employs a unit of measurement known as the Specific Absorption Rate, or SAR.
- ** The SAR limit for mobile phones used by the public is 2.0 watts/kilogram (W/Kg) averaged over ten grams of tissue, recommended by The Council of the European Union. The limit incorporates a substantial margin of safety to give additional protection for the public and to account for any variations in measurements.
- *** Tests for SAR have been conducted using standard operation positions with the phone transmitting at its highest certified power level in all tested frequency bands. Although the SAR is determined at the highest certified power level, the actual SAR level of the phone while operating can be well below the maximum value. This is because the phone is designed to operate at multiple power levels so as to use only the power required to reach the network. In general, the closer you are to a base station antenna, the lower the power output.

Federal Communications Commission (FCC) Notice

- This device complies with part 15 of the FCC rules. Operation is subject to the following two conditions :
 - ① this device may not cause harmful interference, and
 - ② this device must accept any interference received, including interference that may cause undesired operation.
- Changes or modifications made in or to the radio phone, not expressly approved by the manufacturer, will void the user's authority to operate the equipment.

FCC RF Exposure Information

This model phone meets the U.S. Government's requirements for exposure to radio waves. This model phone contains a radio transmitter and receiver. This model phone is designed and manufactured not to exceed the emission limits for exposure to radio frequency (RF) energy as set by the FCC of the U.S. Government. These limits are part of comprehensive guidelines and establish permitted levels of RF energy for the general population. The guidelines are based on standards that were developed by independent scientific organizations through periodic and thorough evaluation of scientific studies.

The exposure standard for wireless mobile phones employs a unit of measurement known as the Specific Absorption Rate (SAR). The SAR limit set by the FCC is 1.6 W/kg. Tests for SAR are conducted using standard operating positions as accepted by the FCC with the phone transmitting at its highest certified power level in all tested frequency bands. Although the SAR is determined at the highest certified power level, the actual SAR level of the phone while operating can be well below the maximum value. This is because the phone is designed to operate at multiple power levels so as to use only the power required to reach the network. In general, the closer you are to a wireless base station antenna, the lower the power output level of the phone.

Before a phone model is available for sale to the public, it must be tested and certified to prove to the FCC that it does not exceed the limit established by the U.S. government-adopted requirement for safe exposure. The tests are performed on position and locations (for example, at the ear and worn on the body) as required by FCC for each model. The highest SAR value for this model phone as reported to the FCC, when tested for use at the ear, is 0.542 W/kg, and when worn on the body, is 0.519 W/kg. (Body-worn measurements differ among phone models, depending upon available accessories and FCC requirements).

While there may be differences between the SAR levels of various phones and at various positions, they all meet the U.S. government requirements.

The FCC has granted an Equipment Authorization for this model phone with all reported SAR levels evaluated as in compliance with the FCC RF exposure guidelines. SAR information on this model phone is on file with the FCC and can be found under the Equipment Authorization Search section at <http://transition.fcc.gov/oet/ea/fccid/> (please search on FCC ID VQK-F02D).

For body worn operation, this phone has been tested and meets the FCC RF exposure guidelines when used with an accessory designated for this product or when used with an accessory that contains no metal and which positions the handset at a minimum distance of 1.0 cm from the body.

* In the United States, the SAR limit for wireless mobile phones used by the general public is 1.6 Watts/kg (W/kg), averaged over one gram of tissue. SAR values may vary depending upon national reporting requirements and the network band.

This equipment has been tested and found to comply with the limits for a Class B digital device, pursuant to part 15 of the FCC Rules.

These limits are designed to provide reasonable protection against harmful interference in a residential installation. This equipment generates, uses and can radiate radio frequency energy and, if not installed and used in accordance with the instructions, may cause harmful interference to radio communications.

However, there is no guarantee that interference will not occur in a particular installation.

If this equipment does cause harmful interference to radio or television reception, which can be determined by turning the equipment off and on, the user is encouraged to try to correct the interference by one or more of the following measures:

- Reorient or relocate the receiving antenna.
- Increase the separation between the equipment and receiver.
- Connect the equipment into an outlet on a circuit different from that to which the receiver is connected.
- Consult the dealer or an experienced radio/TV technician for help.

Important Safety Information

AIRCRAFT

Switch off your wireless device when boarding an aircraft or whenever you are instructed to do so by airline staff. If your device offers flight mode or similar feature consult airline staff as to whether it can be used on board.

DRIVING

Full attention should be given to driving at all times and local laws and regulations restricting the use of wireless devices while driving must be observed.

HOSPITALS

Mobile phones should be switched off wherever you are requested to do so in hospitals, clinics or health care facilities. These requests are designed to prevent possible interference with sensitive medical equipment.

PETROL STATIONS

Obey all posted signs with respect to the use of wireless devices or other radio equipment in locations with flammable material and chemicals. Switch off your wireless device whenever you are instructed to do so by authorized staff.

INTERFERENCE

Care must be taken when using the phone in close proximity to personal medical devices, such as pacemakers and hearing aids.

Pacemakers

Pacemaker manufacturers recommend that a minimum separation of 15 cm be maintained between a mobile phone and a pace maker to avoid potential interference with the pacemaker. To achieve this use the phone on the opposite ear to your pacemaker and does not carry it in a breast pocket.

Hearing Aids

Some digital wireless phones may interfere with some hearing aids. In the event of such interference, you may want to consult your hearing aid manufacturer to discuss alternatives.

For other Medical Devices :

Please consult your physician and the device manufacturer to determine if operation of your phone may interfere with the operation of your medical device.

Appendix

Export Administration Regulations

This product and its accessories may be under coverage of the Export Administration Regulations of Japan ("Foreign Exchange and Foreign Trade Control Laws" and the related laws and regulations). And, they are also under coverage of Export Administration Regulations of the U.S. When exporting and reexporting this product and its accessories, take necessary procedures on your responsibility and expense. For details, contact Ministry of Economy, Trade and Industry of Japan or US Department of Commerce.

Appendix

Intellectual Property Right

Copyrights and portrait rights

Except for the case protected by copyright laws such as personal use, use of FOMA terminal to reproduce, alter, or publicly transmit recorded pictures or sounds, or copyrighted text, images, music or software downloaded from websites without the copyright holder's authorization is prohibited.

Note that taking photos or recordings at some demonstrations, performances or exhibitions may be prohibited even when only for personal use.

Avoid taking pictures of others with FOMA terminal without their consent or disclosing recorded pictures of others without their consent to general public through Internet websites etc., because they may infringe on portrait rights.

Trademarks

Company and product names mentioned in this manual are trademarks or registered trademarks of their respective holders.

- "FOMA", "i-mode", "i-appli", "i-motion", "Deco-mail", "Chara-den", "ToruCa", "mopera", "mopera U", "WORLD CALL", "DCMX", "i-area", "WORLD WING", "OFFICEED", "2in1", "docomo STYLE series" and logos of "i-mode", "i-appli", "Music&Video Channel", "iC" are trademarks or registered trademarks of NTT DOCOMO.
- "Catch Phone (Call waiting service)" is a registered trademark of Nippon Telegraph and Telephone Corporation.
- McAfee® is registered trademarks or trademarks of McAfee, Inc. and/or its affiliates in the US and/or other countries.
- Rovi, G-GUIDE, G-GUIDE MOBILE and G-Guide related logos are trademarks or



registered trademarks of Rovi Corporation and/or its subsidiaries in Japan.

- Contains Adobe® Flash® Player, Adobe® Flash® Lite® and Adobe Reader® Mobile technology by Adobe Systems Incorporated. Adobe Flash Player Copyright© 1996-2011 Adobe Systems Incorporated. All rights reserved. Adobe Flash Lite Copyright© 2003-2011 Adobe Systems Incorporated. All rights reserved. Adobe Reader Mobile Copyright© 1993-2011 Adobe Systems Incorporated. All rights reserved. Adobe, Adobe Reader, Flash and Flash Lite are either registered trademarks or trademarks of Adobe Systems Incorporated in the United States and/or other countries.
- This product contains NetFront Browser, NetFront Document Viewer and NetFront Sync Client of ACCESS CO., LTD. ACCESS, the ACCESS logo and NetFront are registered trademarks or trademarks of ACCESS CO., LTD. in the United States, Japan and/or other countries. Copyright© 2011 ACCESS CO., LTD. All rights reserved.
- Powered by JBlend™ Copyright 2002-2011 Aplix Corporation. All rights reserved. JBlend and JBlend-related trademarks are trademarks or registered trademarks of Aplix Corporation in Japan and other countries.
- ℹ is a registered trademark of FeliCa Networks, Inc.
- FeliCa is a registered trademark of Sony Corporation.
- QR code is a registered trademark of Denso Wave Inc.
- microSDHC Logo is a trademark of SD-3C, LLC.



Powered by
ADOBE® FLASH®







ACCESS® NetFront®



JBlend®



microSDHC
LLC

- "Multitask" is a registered trademark of NEC Corporation.
- QuickTime is a registered trademark of Apple Inc., in the US and other countries.
- Microsoft[®], Windows[®], Windows Media[®], Windows Vista[®] and PowerPoint[®] are trademarks or registered trademarks of "Microsoft Corporation" in the US and other countries.
- Microsoft Excel and Microsoft Word are product names of Microsoft Corporation in the U.S.A. In this manual, they may be described as Excel and Word.
- The abbreviations of operating systems (Japanese versions) below are used in this manual.
 - Windows 7 stands for Microsoft[®] Windows[®] 7 (Starter, Home Basic, Home Premium, Professional, Enterprise and Ultimate).
 - Windows Vista stands for Windows Vista[®] (Home Basic, Home Premium, Business, Enterprise and Ultimate).
 - Windows XP indicates the Microsoft[®] Windows[®] XP Professional operating system or Microsoft[®] Windows[®] XP Home Edition operating system.
- Google and Google Map for Mobile are trademarks of Google Inc.
- The Bluetooth word mark and logos are owned by the Bluetooth SIG, INC. and any use of such marks by NTT DOCOMO, INC. is under license. Other trademarks and names are those of their respective owners.
- "CROSS YOU" is a trademark of Sony Corporation.
- Manufactured under license from Dolby Laboratories. Dolby and the double-D symbol are trademarks of Dolby Laboratories.
- iWnn of OMRON SOFTWARE Co., Ltd. is used for conversion methods for Japanese language, and for phrase prediction methods for English. iWnn[®] OMRON SOFTWARE Co., Ltd. 2008-2011 All Rights Reserved.
- "AXIS Font" is a trademark of AXIS Inc., and the "AXIS" font is a font developed by Type Project Inc.
- This product contains software licensed by Symbian Foundation Limited. Symbian is a registered trademark of Symbian Foundation Limited.
- "Privacy mode" is a registered trademark of FUJITSU LIMITED.
- "Uni-Type" is a universal designed font jointly-developed by LIM Corp., Ltd. and Faculty of Engineering, Chiba University. Uni-Type is a registered trademark of LIM Corp., Ltd.
- "丸ゴシック (Maru Gothic)", "レイミン (Reimin)" and "丸フォーク (Maru Fork)" are provided by Morisawa & Company, Ltd. and the copyrights of these font data belong to them. Names of "レイミン (Reimin)" and "丸フォーク (Maru Fork)" are their trademarks.
- Wi-Fi[®], Wi-Fi Alliance[®], and logos of Wi-Fi and Wi-Fi CERTIFIED are registered trademarks of Wi-Fi Alliance.
- Wi-Fi CERTIFIED™, WPA™, WPA2™ and Wi-Fi Protected Setup™ are trademarks of Wi-Fi Alliance.
- AOSS™ is a trademark of BUFFALO INC. 
- DLNA[®], the DLNA Logo and DNLA CERTIFIED™ are trademarks, service marks, or certification marks of the Digital Living Network Alliance.
- OBEX™, IrSimple™, IrSS™ and IrSimpleShot™ are trademarks of Infrared Data Association[®]. 
- Blu-ray Disc and its logo are trademarks.
- HDMI, HDMI logo and High-Definition Multimedia Interface are trademarks and registered trademarks of HDMI Licensing, LLC. 
- DVM™ is a trademark of microphone directionality control technology of DiMAGIC (DiMAGIC Co., Ltd.). 
- "くーまん" is a trademark of Dora communications CO.,LTD.
- Other company and product names mentioned in this manual are trademarks or registered trademarks of their respective holders.

Others

- This product contains a module developed by the Independent JPEG Group.
- FeliCa is a contactless IC card technology developed by Sony Corporation.
- OMRON Corporation's Mobile OmCR is used for a character recognition engine.
- This product contains software licensed based on Apache License V2.0. and altered as necessary by NTT DOCOMO, INC.

This product contains software licensed complying with GNU Lesser General Public License (LGPL), Eclipse Public License (EPL), etc.

For more details, on the FOMA terminal, **[MENU]**⇒
[6] **[≡]** **[1]** ⇒ "その他(Others)" to see in "オープンソースライセンス(Open source license)".

The source code of the used open source software is disclosed according to the rules of LGPL (<http://www.gnu.org/licenses/>). For more details, refer to the information on this product in the following site. <http://www.fmworlnd.net/product/phone/fp/sb/develop/>

- This product is licensed based on MPEG-4 Visual Patent Portfolio License. The use of MPEG-4 Video Codec function is allowed for personal and nonprofit use only in the cases below.
 - Recording moving pictures and i-motion that conform to MPEG-4 Visual Standard (hereinafter referred to as MPEG-4 Video)
 - Playing MPEG-4 Videos recorded personally by consumers not engaged in profit activities
 - Playing MPEG-4 Video supplied from the provider licensed from MPEG-LA

For further utilizing such as promotion, in-house use or profit-making business, please contact MPEG LA, LLC in U.S.
- Content owners use Windows Media digital rights management technology (WMDRM) to protect their intellectual property, including copyrights. This device uses WMDRM software to access WMDRM-protected content. If the WMDRM software fails to

protect the content, content owners may ask Microsoft to revoke the software's ability to use WMDRM to play or copy protected content. Revocation does not affect unprotected content. When downloading licenses for protected content, you agree that Microsoft may include a "Revocation List" with the licenses. Content owners may require you to upgrade WMDRM to access their content. If you decline an upgrade, you cannot access a content that requires the upgrade.

- The HMM-Based Speech Synthesis Engine embedded in this product uses the Simplified BSD License.

The HMM-Based Speech Synthesis System (HTS) hts_engine API developed by HTS Working Group <http://hts-engine.sourceforge.net/>

Copyright© 2001-2010 Nagoya Institute of Technology, Department of Computer Science 2001-2008 Tokyo Institute of Technology, Interdisciplinary Graduate School of Science and Engineering
All rights reserved.

Redistribution and use in source and binary forms, with or without modification, are permitted provided that the following conditions are met:

- Redistributions of source code must retain the above copyright notice, this list of conditions and the following disclaimer.
- Redistributions in binary form must reproduce the above copyright notice, this list of conditions and the following disclaimer in the documentation and/or other materials provided with the distribution.
- Neither the name of the HTS working group nor the names of its contributors may be used to endorse or promote products derived from this software without specific prior written permission.

THIS SOFTWARE IS PROVIDED BY THE COPYRIGHT HOLDERS AND CONTRIBUTORS "AS IS" AND ANY EXPRESS OR IMPLIED WARRANTIES, INCLUDING, BUT NOT LIMITED TO, THE IMPLIED WARRANTIES OF MERCHANTABILITY AND FITNESS FOR A

PARTICULAR PURPOSE ARE DISCLAIMED. IN NO EVENT SHALL THE COPYRIGHT OWNER OR CONTRIBUTORS BE LIABLE FOR ANY DIRECT, INDIRECT, INCIDENTAL, SPECIAL, EXEMPLARY, OR CONSEQUENTIAL DAMAGES (INCLUDING, BUT NOT LIMITED TO, PROCUREMENT OF SUBSTITUTE GOODS OR SERVICES; LOSS OF USE, DATA, OR PROFITS; OR BUSINESS INTERRUPTION) HOWEVER CAUSED AND ON ANY THEORY OF LIABILITY, WHETHER IN CONTRACT, STRICT LIABILITY, OR TORT (INCLUDING NEGLIGENCE OR OTHERWISE) ARISING IN ANY WAY OUT OF THE USE OF THIS SOFTWARE, EVEN IF ADVISED OF THE POSSIBILITY OF SUCH DAMAGE.

- Attached 電子辞書データDVD (Electronic dictionary data DVD) (Sample) contains following dictionary data (27 dictionaries + 6 searches by category).
 - <岩波書店 (Iwanami Shoten, Publishers)> 広辞苑 第六版 DVD-ROM版+6分野別検索 (慣用句・漢字・人名・地名・作品名・季語) (新村出編) (KOJIEN 6th edition, DVD-ROM version + 6-category search)
 - <研究社 (KENKYUSYA)> リーダーズ英和辞典 第2版 (松田徳一郎編) (Reader's English-Japanese dictionary 2nd edition)
 - 新和英中辞典 第5版 (Martin Collick, David P. Dutcher, 田辺宗一、金子稔編) (New Japanese-English-Chinese dictionary 5th edition)
 - <自由国民社 (Jiyukokuminsya)> 現代用語の基礎知識2011年版 (自由国民社編) (Basic knowledge of modern term for 2011)
 - <大修館書店 (Daisyukan Shoten)> 新漢語林MX (鎌田正、米山寅太郎著) (New Chinese origin words MX)
 - みんなで国語辞典② あふれる新語 (北原保雄編著 / 「もっと明鏡」委員会編集) (Minna de Kokugo jiten ② Afureru shingo)
 - KY式日本語 (北原保雄編著 / 「もっと明鏡」委員会編集) (KY style Japanese)
 - 問題な日本語 (北原保雄編 (北原保雄、小林賢次、砂川有里子、鳥飼浩二、矢澤真人執筆)) (Problematic Japanese)
 - 築地魚河岸ことばの話 (生田與克、富岡一成著) (TSUKIJI fish market word stories)

<三省堂 (SANSEIDO)>

- デイリー日仏英・仏日英辞典 (村松定史監修 / 三省堂編修所編) (Daily Japanese-French-English/French-Japanese-English dictionary)
- デイリー日独英・独日英辞典 (渡辺学監修 / 三省堂編修所編) (Daily Japanese-German-English/German-Japanese-English dictionary)
- デイリー日中英・中日英辞典 (池田巧監修 / 三省堂編修所編) (Daily Japanese-Chinese-English/Chinese-Japanese-English dictionary)
- デイリー日西英・西日英辞典 (上田博人、アントニオ・ルイス・ティノコ監修 / 三省堂編修所編) (Daily Japanese-Spanish-English/Spanish-Japanese-English dictionary)
- デイリー日伊英・伊日英辞典 (藤村昌昭監修 / 三省堂編修所編) (Daily Japanese-Italian-English/Italian-Japanese-English dictionary)
- デイリー日韓英・韓日英辞典 (福井玲・尹亨仁監修 / 三省堂編修所編) (Daily Japanese-Korean-English/Korean-Japanese-English dictionary)
- デイリー日仏英3か国語会話辞典 (村松定史監修 / 三省堂編修所編) (Daily Japanese-French-English conversation dictionary)
- デイリー日独英3か国語会話辞典 (渡辺学監修 / 三省堂編修所編) (Daily Japanese-German-English conversation dictionary)
- デイリー日中英3か国語会話辞典 (池田巧・胡興智監修 / 三省堂編修所編) (Daily Japanese-Chinese-English conversation dictionary)
- デイリー日西英3か国語会話辞典 (山村ひろみ監修 / 三省堂編修所編) (Daily Japanese-Spanish-English conversation dictionary)
- デイリー日伊英3か国語会話辞典 (藤村昌昭監修 / 三省堂編修所編) (Daily Japanese-Italian-English conversation dictionary)
- デイリー日韓英3か国語会話辞典 (尹亨仁監修 / 三省堂編修所編) (Daily Japanese-Korean-English conversation dictionary)

General Inquiries <docomo Information Center>

0120-005-250 (toll free)

- * Service available in: English, Portuguese, Chinese, Spanish, Korean.
- * Unavailable from part of IP phones.

(Business hours : 9:00 a.m. to 8:00 p.m.)

■ From DOCOMO mobile phones (In Japanese only)

(No prefix) 151 (toll free)

- * Unavailable from land-line phones, etc.

■ From land-line phones (In Japanese only)

0120-800-000 (toll free)

- * Unavailable from part of IP phones.

(Business hours : 9:00 a.m. to 8:00 p.m. (open all year round))

- Please confirm the phone number before you dial.
- For Applications or Repairs and After-Sales Service, please contact the above-mentioned information center or the docomo shop etc. near you on the NTT DOCOMO website or the i-mode site.

▶ NTT DOCOMO website <http://www.nttdocomo.co.jp/english/>

▶ i-mode site iMenu⇒お客様サポート (user support)⇒ドコモショップ (docomo Shop) * In Japanese only

Repairs

■ From DOCOMO mobile phones (In Japanese only)

(No prefix) 113 (toll free)

- * Unavailable from land-line phones, etc.

■ From land-line phones (In Japanese only)

0120-800-000 (toll free)

- * Unavailable from part of IP phones.

(Business hours : 24 hours (open all year round))

Loss or theft of FOMA terminal or payment of cumulative cost overseas <docomo Information Center>

(available 24 hours a day)

■ From DOCOMO mobile phones

International call access code
for the country you stay

-81-3-6832-6600* (toll free)

- * You are charged a call fee to Japan when calling from a land-line phone, etc.
- ※ If you use F-02D, you should dial the number +81-3-6832-6600 (to enter '+', press and hold the '0' key for at least one second).

■ From land-line phones <Universal number>

Universal number
international prefix

-8000120-0151*

- * You might be charged a domestic call fee according to the call rate for the country you stay.
- ※ For international call access codes for major countries and universal number international prefix, refer to DOCOMO International Services website.

- If you lose your FOMA terminal or have it stolen, immediately take the steps necessary for suspending the use of the FOMA terminal.
- If the FOMA terminal you purchased is damaged, bring your FOMA terminal to a repair counter specified by DOCOMO after returning to Japan.



Don't forget your mobile phone ... or your manners!

When using your mobile phone in a public place, don't forget to show common courtesy and consideration for others around you.



Li-ion 00

To prevent damage to the environment, bring used battery packs to a docomo service counter, a docomo agent or a recycle center.

Failures encountered overseas <Network Support and Operation Center>

(available 24 hours a day)

■ From DOCOMO mobile phones

International call access code
for the country you stay

-81-3-6718-1414* (toll free)

- * You are charged a call fee to Japan when calling from a land-line phone, etc.
- ※ If you use F-02D, you should dial the number +81-3-6718-1414 (to enter '+', press and hold the '0' key for at least one second).

■ From land-line phones <Universal number>

Universal number
international prefix

-8005931-8600*

- * You might be charged a domestic call fee according to the call rate for the country you stay.
- ※ For international call access codes for major countries and universal number international prefix, refer to DOCOMO International Services website.

Sales: NTT DOCOMO, INC.
Manufacturer: FUJITSU LIMITED

2011.10 (1st Edition)
CA92002-7682