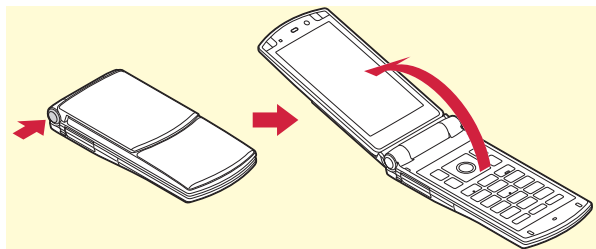


Using Open assist button

You can easily open the FOMA terminal by just pressing a dedicated button.

- Without using the open assist button, the FOMA terminal can be opened lightly.



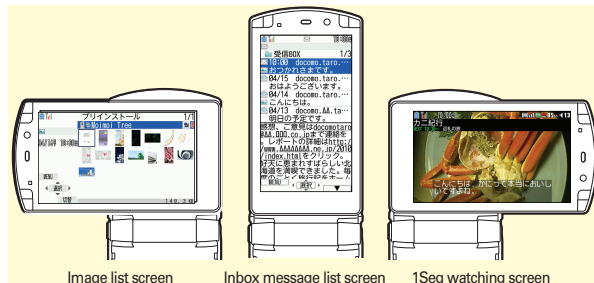
Point

- It is recommended to perform with holding the FOMA terminal in your hand. Be careful not to let the FOMA terminal hit your face, other person, object, etc. when opening, or not to drop the FOMA terminal with the opening rebound.
- Depending on orientation of the FOMA terminal, it may not be fully opened when pressing the button.
- To close the FOMA terminal, use your hand and close it. If the FOMA terminal is not closed completely, once open it fully and then close it again.

YOKO-MOTION

You can use horizontal display by rotating the display 90 degrees to the right or left with the FOMA terminal opened. Just rotating the display can activate 1Seg or Still camera. Also you can answer a call by turning back to the vertical display during horizontal display operation.

- You can change function to be activated by rotating the display in Turn-display option.






Point



- Do not rotate the display with the FOMA terminal closed. It may cause scratch of the display or keypad.
- If you rotate the display while displaying submenu, New Task menu or switch menu, the menu is closed.





Precautions (ALWAYS FOLLOW THESE DIRECTIONS)

- Before using the FOMA terminal, or when necessary, read the precautions below to ensure safe use and handling. After reading this manual, keep it carefully.
- These precautions are intended to protect you and others around you. Read and follow them carefully to avoid injury, damage to the product or damage to property.
- The signs below differentiate between the levels of danger that can occur if the product is not used within the specified guidelines.

 DANGER	This sign denotes that death or serious injury may directly result from improper use.
 WARNING	This sign denotes that death or serious injury may result from improper use.
 CAUTION	This sign denotes that bodily injury or damage to property may result from improper use.

- The symbols below show specific directions.

 Don't	This symbol denotes that the action is prohibited.
 No disassembly	This symbol denotes that disassembling the phone or its components is not allowed.

 No wet hands	This symbol denotes that using the phone or its components with wet hands is not allowed.
 No liquids	This symbol denotes that using the phone or its components in a bathroom or other highly humid area is not allowed.
 Do	This symbol denotes that an instruction must be obeyed at all times.
 Unplug	This symbol denotes that the equipment should be unplugged.

■ Precautions contain the description below.

Handling FOMA terminal, battery pack, adapter and UIM (common)	8
Handling FOMA terminal	9
Handling battery pack	11
Handling adapter	12
Handling UIM	13
Handling mobile phones near electronic medical equipment	13

Handling FOMA terminal, battery pack, adapter and UIM (common)

DANGER



Don't

Do not use, store, or leave the equipment in hot areas such as near flames or in areas under strong direct sunlight such as inside a vehicle.

May cause the equipment to be deformed or malfunction, and battery pack to leak, heat, burst or ignite, and the capability or life to be reduced or shortened. Overheating on parts of the case may cause burns or injuries.



No disassembly

Do not disassemble or remodel the equipment. Do not solder items onto the equipment.

May cause fire, injuries, electric shock, or malfunction. It may also cause the battery pack to leak, heat, burst or ignite.



No liquids

Do not let the equipment get wet.

Contact with water or other liquids can cause heating, electric shock, fire, malfunctions or injuries. Take care of the place for use and treatment of the equipment.



Do

Use the battery pack and adapter specified by NTT DOCOMO for your FOMA terminal.

Use of equipment not specified by DOCOMO can cause FOMA terminal, battery pack and other parts to leak, heat, burst, catch fire or malfunction.

WARNING



Don't

Do not put the battery pack, FOMA terminal, adapter or UIM in microwave ovens or other heating appliances or high-pressure containers.

It may cause the battery pack to leak, heat, burst or ignite, may cause FOMA terminal or adapter to heat, smoke, ignite, or may damage circuits.



Don't

Do not throw the equipment or give hard shock to it.

May cause the battery pack to leak, heat, burst or ignite, and the equipment to malfunction or catch fire.



Don't

Keep conductive materials (metal pieces, pencil lead, etc.) from coming in contact with the charging jack or external connection jack. Do not put those materials inside the terminal.

May be subject to electrical short and could cause fire or malfunction.



Do

Turn FOMA terminal OFF before entering a place such as a gas station where flammable gases are generated.

Do not charge the battery. The gas may catch fire.

When using Osaifu-Keitai in a place as a gas station, turn OFF the terminal before using it. (When IC card lock is activated, deactivate it before turning OFF the terminal.)



Do

If the equipment starts giving off a strange smell, overheats, becomes discolored or deformed during use, charging or in storage, immediately perform the following operations.

1. Remove the power plug from the wall outlet or cigarette lighter socket.
2. Turn FOMA terminal OFF.
3. Remove the battery pack from FOMA terminal.

May cause the equipment to heat, burst or ignite or the battery pack to leak if you keep using the equipment.

CAUTION



Don't

Do not leave the equipment on unstable or sloping surfaces.

May cause malfunction or injuries.



Don't

Do not store the equipment in extremely humid, dusty or hot areas.

May cause malfunction.



Do

Children using the equipment should be instructed in proper operation by an adult. Do not allow them to use the equipment without adult supervision.

May cause injuries.



Do

Store the equipment out of reach of small children.

May be accidentally swallowed or cause injuries.



Do

Be careful especially when using FOMA terminal connected to the adapter continuously for a long time.

If you use i-pppli, a videophone call or 1Seg watching while charging the battery for a long time, FOMA terminal, battery pack and adapter may be heated.

Directly touching a hot part for a long time, you may have redness, itching or rash on your skin, or it may result in low-temperature burns depending on your constitution and/or health condition.

Handling FOMA terminal



WARNING



Don't

Do not direct the infrared data port toward your eye and transmit signals.

May affect your eyes. Faulty operation could result from directing the infrared data port toward other infrared equipment and transmitting signals.



Don't

Do not put FOMA terminal in the place such as the dashboard near the air-bag, where the influence of air-bag explosion is expected.

When the air-bag explodes, FOMA terminal may hit yourself or others and could cause injury, equipment malfunction or damage.



Don't

When you use electronic medical equipment, do not keep the terminal in your chest pocket or inside pocket.

Using your FOMA terminal near medical electronic equipment could cause equipment failure.



Don't

Do not put foreign objects such as liquid like water, metal pieces or burnable things into UIM or microSD card slot.

May cause fire, electric shock or malfunction.



Don't

Do not turn on the light aiming directly at the driver of the car etc.

May disturb driving and cause an accident.



Do

Turn FOMA terminal OFF in areas where use is prohibited, such as in airplanes and hospitals.

May cause electronic equipment or electronic medical equipment to fail or malfunction. If the function which automatically turns the power ON is set, cancel the setting before turning the power OFF.

When using the phone in a medical facility, be sure to observe the regulations of the facility. If you do prohibited act such as using the phone in an airplane, you may be punished according to law.



Do

When you talk by setting handsfree, always keep FOMA terminal away from your ear.

And, when connecting the earphone/microphone to FOMA terminal and play a game or music, adjust the volume moderately.

Too loud volume may cause a hearing loss. And, if you cannot hear the sound around you clearly, it may cause an accident.



Do

If you have weak heart, be careful when setting the Vibrate alert (vibration) or alert volume setting.

Could affect heart function.



Do

If it starts thunder while using the terminal outdoors, turn the power OFF immediately, and move to a safe location.

May be subject to lightning strike and could cause electric shock.



Do

Turn FOMA terminal OFF near high-precision electronic control equipment or electronic equipment using low-power signals.

May cause the equipment to fail or malfunction.

* Examples of electronic equipment to avoid.

Hearing aids, implanted pacemakers or defibrillators, other electronic medical equipment, fire alarms, automatic doors and other automatic control equipment.

Users wearing implanted pacemakers or defibrillators or other electronic medical equipment should check with the manufacturer or sales outlet about the effect of radio frequencies on the equipment.



Do

When the display or camera lens is accidentally broken, be careful of broken glass or exposed internal parts of FOMA terminal.

Surfaces of display and camera lens are made of plastic panels and they are structured for the glass not to scatter, however, if you mistakenly touch broken or exposed parts, you may be injured.



Do

To sound the high-pitched alarm, always keep FOMA terminal away from your ears.

May cause hearing loss.

CAUTION



Don't

Do not swing FOMA terminal by its strap.

May cause the terminal damage or failure, or injury to yourself or others.



Don't

When using the motion tracking or motion sensor, check the safety around you, hold FOMA terminal firmly, and do not shake it unnecessarily.

The motion tracking and motion sensor are functions to operate by tilting or shaking FOMA terminal. There is a risk that FOMA terminal hits people or objects around you by shaking it too much, causing a serious accident or damage.



Don't

If you put a metal strap or the like to FOMA terminal, be careful not to let the strap hit people or objects around you when performing motion tracking or using motion sensor.

Accidents such as injury, malfunction or damage may result.



Don't

If the display part is accidentally broken and liquid crystal leaks out, do not put the liquid in your mouth, inhale, or make contact with your skin.

If the liquid gets into your eyes or mouth, rinse it with clean water and see a doctor immediately.

And, if the liquid adheres to skin or clothing, use alcohol etc. to wipe it off, then wash with soap.

May cause loss of sight or skin problems.



Don't

Do not bring the speaker close to your ear when the ring alert is sounding or you are playing a melody with FOMA terminal.

May cause hearing loss.



Do

In rare cases, using the phone in some vehicle models can cause the vehicle's electronic equipment to malfunction or fail.

In this case, do not use the phone because it may hamper safe driving.



Do

Mobile phones can give some users skin problems such as itching, allergic reactions or rashes. If you develop skin problems, stop using the phone immediately, and see a doctor. FOMA terminal contains metal in the parts below.

Part	Material	Surface treatment
Charging terminal	SUS	Gold plating
External connection jack		Tinning
Movable back panel		Paint
Screw	SWCH16	Zinc plating
Battery pack connector jack	Beryllium copper	Gold plating
Nameplate attach place	PC board	



Do

When opening or closing FOMA terminal, take care not to have your fingers or strap caught by the terminal.

May cause injuries or damages.



Do

When watching 1Seg, take a certain distance from the display in a fully bright place.

May cause your eyesight to be impaired.

Handling battery pack

- Check that the battery type matches the type displayed on the battery pack label.

Display	Battery type
Li-ion 00	Li-ion battery

DANGER



Don't

Do not connect a wire or other metal objects to the jack. And, do not carry or store FOMA terminal with objects like a metal necklace.

May cause the battery pack to leak, heat, burst or ignite.



Don't

Do not try to force the battery pack onto FOMA terminal if you are having trouble installing it. Always install it after checking that it is correctly oriented.

May cause the battery pack to leak, heat, burst or ignite.



Don't

Do not throw the battery pack into the fire.

May cause the battery pack to leak, heat, burst or ignite.



Don't

Do not nail the battery pack, hit with a hammer or step on it.

May cause the battery pack to leak, heat, burst or ignite.



Do

If the battery pack's fluid contacts eyes, immediately flush the eyes with clean water and see a doctor right away. Do not rub the eyes.

May cause loss of sight.

WARNING



Don't

If the battery pack seems to have abnormalities such as deformation or scratches due to an external impact or falling, stop using it immediately.

May cause the battery pack to leak, heat, burst or ignite, and the equipment to malfunction or catch fire.



Do

If the battery pack does not have a full charge after being charged for the specified time, stop charging it.

May cause the battery pack to leak, heat, burst or ignite.



Do

If the battery pack leaks or gives off a strange smell, immediately remove it from the vicinity of open flames.

The vapors from leaking battery pack fluid may ignite or explode.



Do

Be careful not to let your pet bite the battery pack.

May cause the battery pack to leak, heat, burst or ignite, and the equipment to malfunction or catch fire.

⚠ CAUTION

Don't

Do not discard old battery packs together with other garbage.

May cause igniting or environmental destruction. Tape the terminals of old battery packs to insulate them, and then bring them into a sales outlet such as docomo Shop. If your local municipality has a battery recycling program, dispose of them as provided for.



Don't

Do not charge a wet battery pack.

May cause heat generation, ignition or rupture of the battery pack.



Do

If the battery pack's fluid contacts skin or clothes, immediately flush the contacted area thoroughly with clean water.

May hurt the skin.

Handling adapter**⚠ WARNING**

Don't

Do not use the adapter cord or power cord if it gets damaged.

May cause electric shock, heat or fire.



Don't

Do not use the AC adapter or desktop holder in a bathroom or other highly humid area.

May cause electric shock.



Don't

Always use the DC adapter with a negative-ground vehicle. Do not plug it into a positive-ground vehicle.

May cause fire.



Don't

When it starts to thunder, do not touch FOMA terminal and adapter.

May be subject to lightning strike and could cause electric shock.



Don't

Do not short the charging jack while it is connected to the outlet or cigarette lighter socket. Do not touch the charging jack with a part of your body such as your hand or finger.

May cause fire, malfunction, electric shock or injuries.



Don't

Place the adapter and desktop holder in a stable location while charging. Do not cover or wrap the adapter and desktop holder with a cloth or blanket.

May cause FOMA terminal to be removed or the optional devices to be heated, resulting in fire or troubles.



Don't

Do not place heavy objects on the adapter cord or power cord.

May cause electric shock or fire.



No wet hands

Do not touch the adapter cord or outlet with wet hands.

May cause electric shock.



Do

Only use with the specified power source and voltage.

If incorrect voltage is used, this may cause fire or failure. When using FOMA terminal overseas, use AC Adapter for global use. AC adapter : AC100V
DC adapter : 12 or 24V DC (specific for negative ground vehicle)
AC adapter for global use : Between 100V and 240V AC (Connect to the AC outlet for internal household use)



Do

If the DC adapter's fuse blows, replace it only with the specified fuse.

Using other fuses may cause fire or equipment failure. For the specified fuse, see the instructions that come with the DC adapter.



Do

Wipe off any dust that accumulates on the power plug.

May cause fire.



Do

When you connect the AC adapter to an outlet, make sure not to touch with metal such as metal straps and firmly connect to the outlet.

May cause electric shock, electrical short or fire.



Do

When you disconnect the adapter from the outlet or cigarette lighter socket, do not pull the adapter cord or power cord with excessive force. Instead, hold the power plug to disconnect.

Pulling the cord could damage it, possibly leading to electric shock or fire.



Unplug

Always remove the power plug from the outlet when not using the adapter for an extended period.

May cause electric shock, fire or malfunction.



Unplug

Immediately remove the power plug from the outlet or cigarette lighter socket if water or other fluids get into the adapter.

May cause electric shock, smoke or fire.



Unplug

Always remove the power plug from the cigarette lighter socket when cleaning the equipment.

May cause electric shock.

Handling UIM

CAUTION



Do

Be careful of the cut surface when removing UIM (ICs).

May hurt hands or fingers.

Handling mobile phones near electronic medical equipment

■ These precautions are based on the guidelines produced at the Electromagnetic Compatibility Conference Japan, regarding the protection of electronic medical equipment from radio waves emitted by mobile phone units.

WARNING



Do

Obey the following rules inside medical facilities.

- Do not bring FOMA terminal into operating rooms (ORs), intensive care units (ICUs) or coronary care units (CCUs).
- Turn FOMA terminal OFF in hospital wards.
- Turn FOMA terminal OFF in hospital lobbies and corridors if electronic medical equipment could be nearby.
- If the medical facility has specified zones where use or possession of mobile devices is prohibited, obey those instructions.
- If the function to automatically turn ON the power is set, cancel the setting before turning the power OFF.



Do

Turn FOMA terminal OFF in crowded trains or other public places where pacemaker or defibrillator wearers could be nearby.

FOMA terminal's signals may affect the operation of implanted pacemakers or defibrillators, and other devices.



Do

Wearers of implanted pacemakers or defibrillators must carry and use FOMA terminal at least 22 cm away from the implanted device.

FOMA terminal's signals may affect the operation of implanted pacemakers or defibrillators, and other devices.



Do

When electronic medical equipment other than implanted pacemakers or defibrillators are in use outside of medical facilities (such as in home care settings), check with the device manufacturer to determine how the device is affected by electrical signals.

FOMA terminal's signals may affect the performance of electronic medical equipment.

Handling precautions

General

- **Keep water away from the FOMA terminal.**
 - FOMA terminal, battery pack, adapter and UIM are not waterproof. Do not use FOMA terminal in bathrooms or other high-humidity areas, or in the rain. When carrying FOMA terminal in a pocket near your body, sweat may corrode the inner components, causing malfunction. Malfunctions deemed to be caused by water are not covered by the warranty, and may be impossible to repair. Since these conditions are outside the scope of the warranty, a repair, if at all possible, is charged.
- **Clean FOMA terminal with a dry soft cloth (such as a cloth for eyeglasses).**
 - The display of FOMA terminal may have been applied special coating to improve clearness of the color LCD. When cleaning FOMA terminal, rubbing it roughly with a dry cloth can scratch the display. Take care when handling the unit, and clean it with a dry soft cloth (such as a cloth for eyeglasses). Drops of water or dirt left on the display can cause stains or remove the coating.
 - If FOMA terminal is wiped with alcohol, paint thinner, benzine or detergent, the printing may disappear or color may fade.
- **Clean the jack occasionally with a dry cotton swab etc.**
 - If the jack is soiled, connection gets worse and it may cause power to be turned off or insufficient battery charge, so clean the jack with a dry cotton swab etc. Also, be careful never to damage the jack when cleaning it.
- **Do not place FOMA terminal near an air-conditioner outlet.**
 - The rapid change in temperature may cause condensation, causing internal corrosion and malfunction.

- **When using, be careful not to subject excessive force to FOMA terminal or the battery.**
 - If FOMA terminal is crammed into a brimming bag or placed in a pocket and sat on, display, internal PCBs or battery pack may be damaged or malfunction. And, if external devices are plugged into the external connection jack (earphone/microphone jack), the breakage of the connector or malfunction may result.
- **Carefully read the separate instructions that come with FOMA terminal, adapter and desktop holder.**
- **Do not rub or scrape the display with a metal piece etc.**
 - It may scratch the display, causing malfunction or damage.

FOMA terminal

- **Avoid extreme temperature.**
 - Use FOMA terminal where the temperature ranges between 5 and 35°C and humidity ranges between 35 and 85%.
- **FOMA terminal may affect land-line phones, TVs or radios in use nearby, so use it as far as possible from these appliances.**
- **Maintain a separate record of the data you saved in your FOMA terminal.**
 - If the data is deleted, DOCOMO assumes no responsibility for the loss of any data.
- **Do not drop FOMA terminal or subject it to shocks.**
 - May cause malfunction or damage.
- **Do not plug external devices into the external connection jack (earphone/microphone jack) at a slant, or do not pull it forcibly while it is plugged.**
 - May cause malfunction or damage.
- **Do not close FOMA terminal with the strap etc. held inside.**
 - May cause malfunction or damage.
- **It is normal for FOMA terminal to become warm during use or charging. Continue to use it.**
- **Do not leave FOMA terminal with the camera in areas under strong direct sunlight.**
 - May cause discoloring or burn-in of materials.

- **FOMA terminal should normally be used with the external connection jack cap closed.**
 - Dust and/or water brought into FOMA terminal cause troubles.
- **Do not use FOMA terminal with the back cover removed.**
 - It may cause the battery to come off, or may cause a malfunction or damage.
- **Do not put extremely thick stickers on the display or the key side.**
 - Doing so may cause malfunction.
- **Do not rotate the display with FOMA terminal closed.**
 - The display or keypad may be scratched and may cause malfunction or damage.
- **Do not put strong impact on the fingerprint sensor or scratch its surface.**
 - It may cause malfunction of fingerprint sensor and disable authentication operation and pointing operation.
- **Clean the fingerprint sensor with a dry soft cloth (such as a cloth for eyeglasses).**
 - If the fingerprint sensor is dirty or water is sit on its surface, the sensor does not read fingerprints, decreases its authentication performance, erroneously operates authentication function with no finger on it, disables pointing operation.
- **While microSD card is being used, do not take the card out and do not turn off FOMA terminal.**
 - May cause data loss or malfunction.
- **Do not bring magnetic cards etc. close to FOMA terminal.**
 - Magnetic data in cash cards, credit cards, telephone cards, floppy disks, etc. may be erased.
- **Do not bring magnetized objects close to FOMA terminal.**
 - Bringing strong magnetism close may cause a malfunction.

Battery pack

- **The battery pack is a consumable part.**
 - Replace the battery pack if FOMA terminal has extremely short operation time on a full charge, though it may vary by operating conditions. Purchase a new battery pack of the specified type.
- **Charge the battery in an area within the proper ambient temperature range (5-35°C).**
- **Always charge before using it for the first time or after extended disuse.**

- **The operation time provided by the battery pack varies by the operating environment and battery pack's deterioration.**
 - **The battery pack may swell out as it comes to near the end of its lifetime depending on the usage conditions, but it is not a problem.**
 - **Be careful especially about the following points when preserving or leaving the battery pack for a long time.**
 - Keeping under the state of the full charge (right after charging ends)
 - Keeping under the state of the empty charge (too exhausted to turn on FOMA terminal)
- They may cause the battery pack performance to be degraded or its lifetime to be shortened.
- For necessary battery level to keep for a long time, the display of battery icon is a state of approximately 2 or 3 cells.

Adapter

- **Charge the battery in an area within the proper ambient temperature range (5-35°C).**
- **Do not charge the battery in the areas below.**
 - In areas of excessive humidity, dust or vibrations
 - Near land-line phones or TVs/radios
- **It is normal for the adapter to become hot while charging. Continue to use it.**
- **When using the DC adapter for charging, keep the vehicle engine running.**
 - The vehicle's battery could become flat.
- **When using an outlet with a mechanism preventing unplugging, follow the handling instructions for that outlet.**
- **Do not give strong shock. Do not deform the charging jack.**
 - May cause malfunction.

UIM

- Do not use excessive force to install/remove UIM.
- It is normal for UIM to become warm during use. Continue to use it.
- Note that DOCOMO assumes no responsibility for malfunctions occurring as the result of inserting and using a UIM with another IC card reader/writer.
- Always keep UIM ICs clean.
- Clean UIM with a soft, dry cloth (such as a cloth for eyeglasses).
- Maintain a separate record of the data you saved in UIM.
 - If the data is deleted, DOCOMO assumes no responsibility for the loss of any data.
- To preserve the environment, bring the old UIM to a sales outlet such as docomo Shop.
- Avoid extreme temperature.
- Take care not to scratch, touch accidentally or short IC.
 - May cause data loss or malfunction.
- Do not drop UIM or subject it to shocks.
 - May cause malfunction.
- Do not bend UIM or place heavy objects on it.
 - May cause malfunction.
- Do not install UIM into FOMA terminal with a label or sticker put on UIM.
 - May cause malfunction.

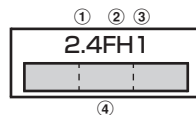
Bluetooth® devices

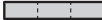
- This FOMA terminal is equipped with the security features, that are compliant with Bluetooth standards for communication via Bluetooth. However, depending on the settings, there may not be enough security. Be aware of security risks when using Bluetooth.
- DOCOMO assumes no responsibility for any information which may be leaked during communication via Bluetooth.

- You can use handsfree, headset, audio, keyboard, dial-up connection, object push and serial port devices with FOMA terminal. An audio/video remote control may be available with an audio device (only Bluetooth compatible devices).

Frequency bands

Frequency bands used by FOMA terminal Bluetooth function are as below.



- ① 2.4 : Radio equipment that uses the 2400 MHz band.
- ② FH : The modulation is the FH-SS method.
- ③ 1 : The expected interference distance is 10 m or shorter.
- ④  : All bandwidths between 2400 MHz and 2483.5 MHz are used, and the bandwidth used by mobile object identification devices cannot be avoided.



Cautions on using Bluetooth devices

In the bandwidth used by this handset, in addition to home electric appliances such as a microwave oven and industrial/scientific/medical devices, in-plant radio stations used to identify mobile objects used in production lines of a factory that require a license, specified low power radio stations, or amateur radio stations that do not require a license (hereafter "other radio stations") can be in operation.

1. Before using this terminal, check whether other radio stations are in operation in your neighborhood.
2. If radio wave interference occurs between the terminal and "other radio stations", use the terminal in a different location or "Turn the power OFF" to avoid the radio wave interference.
3. For more detailed information, contact "General Inquiries" using the phone number on the back of this manual.

FeliCa reader/writer

- FeliCa reader/writer function of FOMA terminal uses weak waves requiring no licenses for radio stations.
- It uses 13.56 MHz frequency band. When using other reader/writers in your surroundings, keep FOMA terminal away sufficiently from them. Before using the FeliCa reader/writer, confirm that there are no radio stations using the same frequency band nearby.

CAUTION

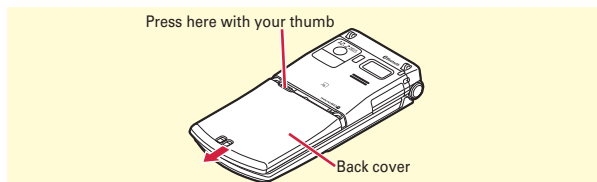
- **Do not use a remodeled FOMA terminal. Using a remodeled terminal violates the Radio Law.**
FOMA terminal is certified according to technical standard conformance of specified wireless equipment based on the Radio Law, and as a proof of it, the "Technical Compliance Mark" is depicted on the engraved sticker of FOMA terminal.
If you remodel FOMA terminal by removing its screws, your certification of technical standard conformance becomes invalid.
Do not use FOMA terminal with its certification of technical standard conformance invalid as it violates the Radio Law.
- **Be careful when you use FOMA terminal while driving a car etc.**
Using a mobile phone while driving is subject to penal regulations.
If you inevitably receive a call, tell the caller that you will "call back" by handsfree, then park in a safe place and call back.
- **Use the Bluetooth function only in Japan.**
The Bluetooth function of the FOMA terminal is compliant with wireless standards and is authorized for use only in Japan.
If you use this function overseas, you may be punished.
- **Use FeliCa reader/writer function only in Japan.**
FeliCa reader/writer function of FOMA terminal conforms to Japanese radio standards.
If you use this function overseas, you may be punished.

Attaching UIM (FOMA card)/battery pack

After turning power OFF, close FOMA terminal and hold it in your hand so that you can properly attach UIM/battery pack.

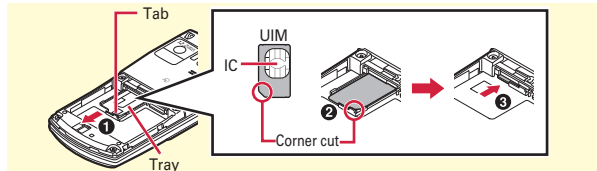
❖ Removing Back Cover

Slide the back cover in the direction of the arrow by 2 mm with a thumb to remove it.



❖ Installing UIM

Pull the tab with your nail and pull out the tray until it clicks (1). Hold UIM with the IC side down, align the beveled corner with the tray (2) and push into the tray until it stops (3).

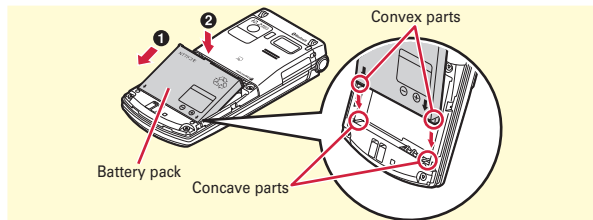


Point

- UIM (blue) is not available for this FOMA terminal. If you have the UIM (blue), bring it to a docomo Shop.

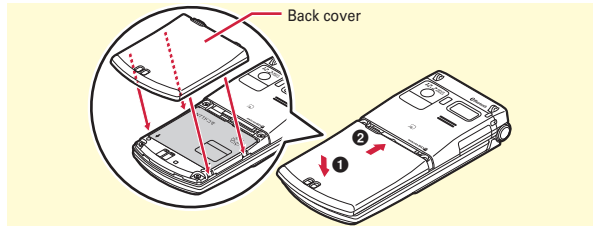
❖ Installing battery pack

With the label side of the battery pack upward, align convex parts of the battery pack with concave parts of FOMA terminal and slide the battery pack in the direction of 1, press the battery pack in the direction of 2 to set it in.



❖ Installing back cover

Place the 4 tabs of back cover to the notches, press back cover in the direction of 1 to avoid forming any clearance between FOMA terminal and back cover, then slide it in the direction of 2 to install it.

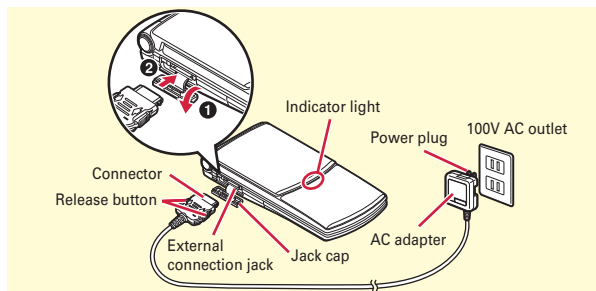


Charging

The battery pack does not have a full charge at time of purchase. Use AC adapter for FOMA terminal to charge the battery before using FOMA terminal.

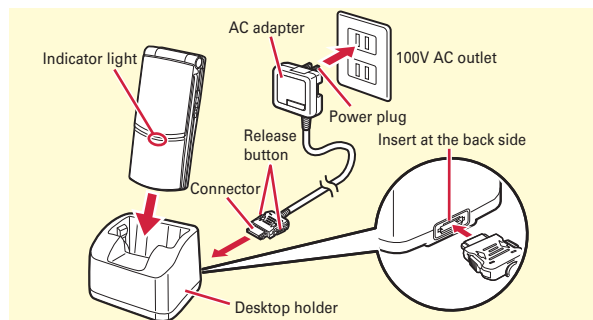
Charging using AC adapter

- 1** Open jack cap (❶) of FOMA terminal, hold the connector horizontally with the arrow side upward and insert it to the jack. (❷)
- 2** Unfold the power plug and insert it into a 100V AC outlet.
* Check that the light turns on.
- 3** When charging is over, pull out the power plug from the outlet, and pull out from FOMA terminal horizontally while pressing the release buttons on both sides of the connector.



Using desktop holder and AC adapter in combination for charging

- 1** Insert the AC adapter to the attached desktop holder, with the arrow on the AC adapters connector upward.
- 2** Unfold the AC adapters power plug and insert it into a 100V AC outlet.
- 3** With FOMA terminal closed, insert it into the desktop holder.
* Check that the light turns on.
- 4** After charging is completed, remove FOMA terminal from the desktop holder.



❖ Operations for charging

When charging starts, a charge start alert sounds. While charging, the light turns on and the battery icons on the display and the sub-display blink. When charging is over, a charge completion alert sounds.

Before Using

Turning power ON - Configuring default setting

Perform the following operations after turning the power ON for the first time.


1  (2 sec. or more)

2 "Yes" or "No" on a confirmation screen of enlarged menu setting

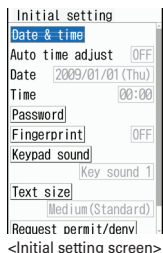
The screen shown to the right appears.

3 Set required items  [Complete]

Always set Change security code and Request permit/deny. If you exit without setting, Initial setting screen reappears when the power is turned ON the next time.


4  on a confirmation screen of software update function

The stand-by display appears.



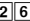




Point

- If no operation is performed, the display light is turned off automatically according to the settings in Light time-out or Power saving mode. The display light turns on again if there is any operation or incoming call.

Turning power off :  (2 sec. or more)

Changing the initial setting :     

Changing screen display to English :      ▶ Select "English"

Before Using

User information

Check your own phone number.



For details of checking/changing a mail address, refer to "Mobile Phone User's Guide [i-mode] FOMA version".



1   User information

The screen shown to the right appears.



Point

Editing user information : On User information edit screen,  ▶ Authenticate ▶ Edit ▶ 

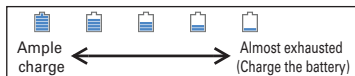
Checking a phone number during a call :  

Viewing display

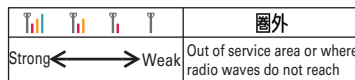
The current state can be checked by the icon appearing on the screen. Major icons are as follows.

Top of the display

Battery level (Battery icon)



Signal strength (Antenna icon)



SELF : Self mode ON

: In data transfer mode

: Connecting to i-mode

: Infrared communication in operation

: Bluetooth ON

: The total calls cost exceeds the limit

: Bluetooth connection being established

: Communication using handsfree-compatible device in progress

: Handsfree ON

: Power saving mode activated

: Positioning with GPS

: Request setting

: Lock on close or Lock when immobile ON

: Kid-safe mode ON

: A phonebook entry or schedule has secret attribute

: High-pitched alarm ON

: Unread Area Mail exists

: Unread i-mode mail exists

: Arrival i-concier information exists

: Unreceived i-mode mail exists in i-mode Center

: Displaying SSL/TLS page etc.

: Auto-send mail exists

: Music&Video Channel program obtaining reservation exists

: During i-appli operation

: i-appli call exists

: Alarm clock ON

: Schedule reminder ON

: Inside OFFICEED area

Bottom of the display



Arrival information (Starting from the left, missed call, recorded message, voice mail service, unread message, unread ToruCa, i-appli call)

: Silent mode ON

: Call alert volume OFF

: Vibrator for voice call ON

: In Public mode (Drive mode)

: Record message ON

: Keypad dial lock ON

: GPS Request failed

: Personal data lock ON

: Music&Video Channel program obtaining failure

: Reading UIM

: IC card lock ON

: Available multi-cursor key

: Performing 1Seg recording reservation

: i-appli Auto start failed

: microSD card installed during Communication mode

: Connected to external device using USB cable

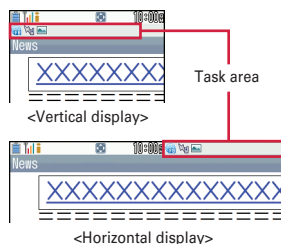
: Pedometer/ACT monitor is set

: Software update rewrite notice

: Auto-update of latest pattern definition failure

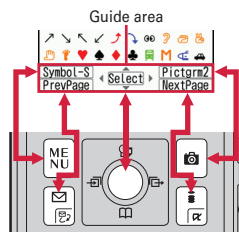
Task area

The icon indicating the function (task) in progress appears in the task area.



Guide area and key operation

Operations that can be performed by pressing **MENU**, **Envelope**, **Camera**, and **Light** are displayed in the guide area. To perform an operation in the guide area, press the corresponding key. **Light** on the guide area corresponds to multi-cursor keys **Light**.



Screen Explanation

Viewing sub-display and light

Even when FOMA terminal is closed, the icons in the sub-display and light provide information. When no operation is performed for a certain period of time, the sub-display light is turned off, but it turns on again when you press either side key.



Switching views

Each time you press **Light**, the view switches in the order of icon and clock ⇒ date and clock ⇒ big clock. When "Use" is set to Set Pedometer/Activity monitor, each time you press **Light**, the view switches in the order of steps ⇒ activity ⇒ clock.

Arrival information

When a missed call, recorded message, unread message, or voice message of Voice Mail service, etc. exists, press **Light** with clock displayed to display the number of calls or messages, and then press **Light** to scroll reception date/time and information about the senders.

Light

The light turns on or blinks when the battery charges, the camera is activated, light alert (⇒P35) is set, etc.

Information

- The light on the sub-display turns on just by tilting FOMA terminal. **【背面自動点灯設定 (Auto light on)】**

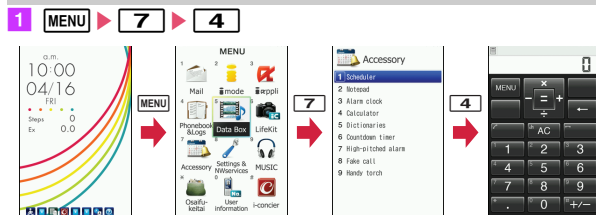
Screen Explanation

Menu operation

On the stand-by display, press **MENU** and then perform the functions from the menu. You can select a menu item with shortcut operations, which use the keypad, **[X]** and **[#]**, or with multi-cursor operation, which uses the multi-cursor key to move the cursor.

<Example> Selecting "Calculator"

Shortcut operations



Multi-cursor key operations

1 **MENU** ▶ Move the cursor to "7 Accessory" ▶ **[Select]**
▶ Move the cursor to "4 Calculator" ▶ **[Select]**

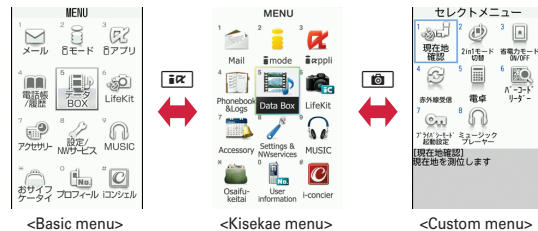
Point

- Even when a function is running, you can perform the same operation if "MENU" is displayed on the guide area.
- To return to the previous screen, press **[CLR]**. To return to the stand-by display, press **[Home]**.
- On the stand-by display with Info/calendar layout, Shortcut icons set, or with arrival information icon or i-concier information displayed, press **[Select]** to change the display to Focus mode that allows you to quickly display the related information.

Switching menu screens

You can switch among "Kisekai menu", the design of which can be changed using Kisekai Tool (⇒P35), "Basic menu", which has the fixed menu numbers, and "Custom menu", to which menu items can be saved freely.

A Kisekai menu matched with the color of FOMA terminal is set by default.







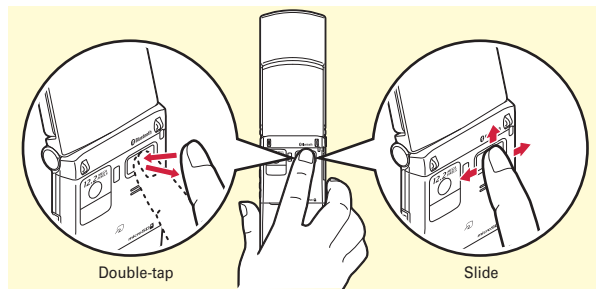
Point

- In some types of Kisekai menus, the menu structure is changed according to usage frequency, or the number assigned to menu item (item number) may not be applicable.
- The menu that appears when **MENU** is pressed on the stand-by display can be changed from the start menu. ⇒ P31

Pointing device

With the fingerprint sensor, you can operate menus or browser screens with your finger. Pointing device operation corresponds to multi-cursor key operation as follows.

Pointing device	Multi-cursor key
Slide Keep touching the fingerprint sensor, move your finger up, down, right or left.	
Slide your finger and keep touching the fingerprint sensor	 (1 sec. or more)
Double-tap Tap twice as you can put the ball of your finger on the center of fingerprint sensor as parallel as possible.	
Keep touching the fingerprint sensor for 1 sec. or more This operation is for the browser screen only.	 (1 sec. or more)



Setting the pointing device

Set the effective area and speed of the pointing device.

- 1  **8** Settings & NWservices ▶ **7** Clock/Turn/Input etc. ▶ **8** Pointing device ▶ Set required items ▶  **[Set]**

When "Not use" is set, you can use the fingerprint sensor only for fingerprint authentication.

Point

- You cannot operate on the stand-by display (except in Focus mode) or on the screen while talking.
- Operate the pointing device with a light touch. Putting your finger nail or excessive force on the fingerprint sensor may damage it.

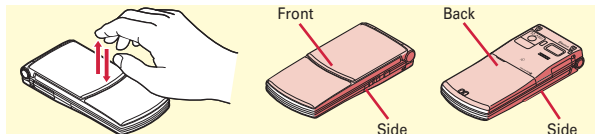
Screen Explanation

Motion sensor



You can operate FOMA terminal by double-tapping (tapping it twice) or tilting it.

❖ Stopping an alarm/displaying details of arrival information

When FOMA terminal is closed and the alarm sounds, double-tapping the front or back side stops the alarm. When the clock is displayed on the sub-display, double-tapping the side displays details of arrival information.



❖ Tilting FOMA terminal

Tilting FOMA terminal while pressing and holding  or  when Browser screen is displayed scrolls the screen or switches the vertical/horizontal display for the clock on the sub-display.

Setting Motion sensor

- 1  ▶ 8 **Settings & NWservices** ▶ 7 **Clock/Turn/ Input etc.** ▶ 7 **Motion sensor** ▶ Set required items ▶  [Set]

Screen Explanation

使いかたガイド (Guide)

You can check overviews and operations of functions, and troubleshooting. (In Japanese only)

1 ▶ 6 **LifeKit** ▶ # **Guide** ▶ Select a search method

目次 (Contents) : Search from a list of functions.


索引 (Index) : Search from a list of words sorted according to Japanese syllabary.

フリーワード検索 (Free word search) : Enter a keyword to search for.

ブックマーク (Bookmark) : Search from a list of registered bookmarks.

困ったときには (Troubleshooting) : Search from lists of troubles or error messages.

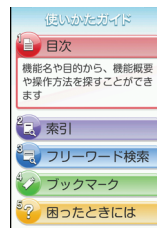
Point

- On a description screen, select "この機能を使う (Use this function)" to perform a function. Selecting a link item in "関連機能 (related functions)", or "→コチラ (See more)" displays a corresponding description screen.
- Terms indicated with  in this manual are index terms in "Guide".



Information

- You can also access **フリーワード検索** from **クイック検索**. ⇒P106



<Guide screen>

Caller ID notification (At subscription : Notify)

You can notify your phone number (caller ID) to the other party's terminal when making a voice call.

1 **MENU** ▶ 8 **Settings & NWservices** ▶ 8 **NW Services** ▶ 4 **Caller ID** ▶ 1 **Caller ID notification** ▶ 1 **Activate/Deactivate** ▶ 1 **Notify**

Select "2 Not notify" if you do not want to inform.

Point

- Caller ID is your important personal information. Carefully consider whether you want to include caller ID information when making a call.
- If an announcement of requesting caller ID is heard when making a call, make a call again after setting Caller ID notification or adding prefix "186".

Specific absorption rate (SAR) of mobile phone

This model phone FOMA F-07B meets the MIC's*¹ technical regulation governing exposure to radio waves.

The technical regulation established permitted levels of radio frequency energy, based on standards that were developed by independent scientific organizations through periodic and thorough evaluation of scientific studies. The regulation employs a unit of measurement known as the Specific Absorption Rate, or SAR. The SAR limit is 2 watts/kilogram (W/kg)*² averaged over 10 grams of tissue. The limit includes a substantial safety margin designed to assure the safety of all persons, regardless of age and health. The value of the limit is equal to the international guidelines recommended by ICNIRP.*³

All phone models should be confirmed to comply with the regulation, before they are available for sale to the public. The highest SAR value for this FOMA F-07B is 1.140W/kg. It was taken by the Telecom Engineering Center (TELEC).

The test for SAR was conducted according to the MIC testing procedure using standard operating positions with the phone transmitting at its highest permitted power level in all tested frequency bands. While there may be differences between the SAR levels of various phones and at various positions, they all meet the MIC's technical regulation. Although the SAR is determined at the highest certified power level, the actual SAR of the phone during operation can be well below the maximum value.

For further information about SAR, please see the websites below.

World Health Organization (WHO) :
<http://www.who.int/peh-emf/>
 ICNIRP :
<http://www.icnirp.de/>
 MIC :
<http://www.tele.soumu.go.jp/e/ele/body/index.htm>
 TELEC :
http://www.telec.or.jp/ENG/Index_e.htm
 NTT DOCOMO :
<http://www.nttdocomo.co.jp/english/product/>
 FUJITSU LIMITED :
<http://www.fmworld.net/product/phone/sar/>

*1 Ministry of Internal Affairs and Communications.

*2 The technical regulation is provided in Article 14-2 of the Ministry Ordinance Regulating Radio Equipment.

*3 International Commission on Non-Ionizing Radiation Protection.

Declaration of Conformity

The product "F-07B" is declared to conform with the essential requirements of European Union Directive 1999/5/EC Radio and Telecommunications Terminal Equipment Directive 3.1(a), 3.1(b) and 3.2. The Declaration of Conformity can be found on <http://www.fmworld.net/product/phone/doc/>.

This mobile phone complies with the EU requirements for exposure to radio waves.

Your mobile phone is a radio transceiver, designed and manufactured not to exceed the SAR* limits** for exposure to radio-frequency(RF) energy, which SAR* value, when tested for compliance against the standard was 0.997W/Kg. While there may be differences between the SAR* levels of various phones and at various positions, they all meet*** the EU requirements for RF exposure.

* The exposure standard for mobile phones employs a unit of measurement known as the Specific Absorption Rate, or SAR.

** The SAR limit for mobile phones used by the public is 2.0 watts/kilogram (W/Kg) averaged over ten grams of tissue, recommended by The Council of the European Union. The limit incorporates a substantial margin of safety to give additional protection for the public and to account for any variations in measurements.

*** Tests for SAR have been conducted using standard operation positions with the phone transmitting at its highest certified power level in all tested frequency bands. Although the SAR is determined at the highest certified power level, the actual SAR level of the phone while operating can be well below the maximum value. This is because the phone is designed to operate at multiple power levels so as to use only the power required to reach the network. In general, the closer you are to a base station antenna, the lower the power output.

Federal Communications Commission (FCC) Notice

- This device complies with part 15 of the FCC rules. Operation is subject to the following two conditions :
 - ① this device may not cause harmful interference, and
 - ② this device must accept any interference received, including interference that may cause undesired operation.
- Changes or modifications made in or to the radio phone, not expressly approved by the manufacturer, will void the user's authority to operate the equipment.

FCC RF Exposure Information

This model phone meets the U.S. Government's requirements for exposure to radio waves.

This model phone contains a radio transmitter and receiver. This model phone is designed and manufactured not to exceed the emission limits for exposure to radio frequency (RF) energy as set by the FCC of the U.S. Government. These limits are part of comprehensive guidelines and establish permitted levels of RF energy for the general population. The guidelines are based on standards that were developed by independent scientific organizations through periodic and thorough evaluation of scientific studies.

The exposure standard for wireless mobile phones employs a unit of measurement known as the Specific Absorption Rate (SAR). The SAR limit set by the FCC is 1.6 W/kg. Tests for SAR are conducted using standard operating positions as accepted by the FCC with the phone transmitting at its highest certified power level in all tested frequency bands. Although the SAR is determined at the highest certified power level, the actual SAR level of the phone while operating can be well below the maximum value. This is because the phone is designed to operate at multiple power levels so as to use only the power required to reach the network. In general, the closer you are to a wireless base station antenna, the lower the power output level of the phone.

Before a phone model is available for sale to the public, it must be tested and certified to prove to the FCC that it does not exceed the limit established by the U.S. government-adopted requirement for safe exposure. The tests are performed on position and locations (for example, at the ear and worn on the body) as required by FCC for each model. The highest SAR value for this model phone as reported to the FCC, when tested for use at the ear, is 1.150W/kg, and when worn on the body, is 0.773W/kg. (Body-worn measurements differ among phone models, depending upon available accessories and FCC requirements).

While there may be differences between the SAR levels of various phones and at various positions, they all meet the U.S. government requirements.

The FCC has granted an Equipment Authorization for this model phone with all reported SAR levels evaluated as in compliance with the FCC RF exposure guidelines. SAR information on this model phone is on file with the FCC and can be found under the Equipment Authorization Search section at <http://www.fcc.gov/oet/ea/fccid/> (please search on FCC ID VQK-F07B).

For body worn operation, this phone has been tested and meets the FCC RF exposure guidelines when used with an accessory designated for this product or when used with an accessory that contains no metal and which positions the handset at a minimum distance of 1.5 cm from the body.

* In the United States, the SAR limit for wireless mobile phones used by the general public is 1.6 Watts/kg (W/kg), averaged over one gram of tissue. SAR values may vary depending upon national reporting requirements and the network band.

This equipment has been tested and found to comply with the limits for a Class B digital device, pursuant to part 15 of the FCC Rules.

These limits are designed to provide reasonable protection against harmful interference in a residential installation. This equipment generates, uses and can radiate radio frequency energy and, if not installed and used in accordance with the instructions, may cause harmful interference to radio communications. However, there is no guarantee that interference will not occur in a particular installation.

If this equipment does cause harmful interference to radio or television reception, which can be determined by turning the equipment off and on, the user is encouraged to try to correct the interference by one or more of the following measures:

- Reorient or relocate the receiving antenna.
- Increase the separation between the equipment and receiver.
- Connect the equipment into an outlet on a circuit different from that to which the receiver is connected.
- Consult the dealer or an experienced radio/TV technician for help.

Important Safety Information

AIRCRAFT

Switch off your wireless device when boarding an aircraft or whenever you are instructed to do so by airline staff. If your device offers flight mode or similar feature consult airline staff as to whether it can be used on board.

DRIVING

Full attention should be given to driving at all times and local laws and regulations restricting the use of wireless devices while driving must be observed.

HOSPITALS

Mobile phones should be switched off wherever you are requested to do so in hospitals, clinics or health care facilities. These requests are designed to prevent possible interference with sensitive medical equipment.

PETROL STATIONS

Obey all posted signs with respect to the use of wireless devices or other radio equipment in locations with flammable material and chemicals. Switch off your wireless device whenever you are instructed to do so by authorized staff.

INTERFERENCE

Care must be taken when using the phone in close proximity to personal medical devices, such as pacemakers and hearing aids.

Pacemakers

Pacemaker manufacturers recommend that a minimum separation of 15 cm be maintained between a mobile phone and a pace maker to avoid potential interference with the pacemaker. To achieve this use the phone on the opposite ear to your pacemaker and does not carry it in a breast pocket.

Hearing Aids

Some digital wireless phones may interfere with some hearing aids. In the event of such interference, you may want to consult your hearing aid manufacturer to discuss alternatives.

For other Medical Devices :

Please consult your physician and the device manufacturer to determine if operation of your phone may interfere with the operation of your medical device.

Export Administration Regulations

This product and its accessories may be under coverage of the Export Administration Regulations of Japan ("Foreign Exchange and Foreign Trade Control Laws" and the related laws and regulations). And, they are also under coverage of Export Administration Regulations of the U.S. When exporting and reexporting this product and its accessories, take necessary procedures on your responsibility and expense. For details, contact Ministry of Economy, Trade and Industry of Japan or US Department of Commerce.

Intellectual Property Right

Copyrights and portrait rights

Except for the case protected by copyright laws such as personal use, use of FOMA terminal to reproduce, alter, or publicly transmit recorded pictures or sounds, or copyrighted text, images, music or software downloaded from websites without the copyright holder's authorization is prohibited.

Note that taking photos or recordings at some demonstrations, performances or exhibitions may be prohibited even when only for personal use.

Avoid taking pictures of others with FOMA terminal without their consent or disclosing recorded pictures of others without their consent to general public through Internet websites etc., because they may infringe on portrait rights.

Trademarks

Company and product names mentioned in this manual are trademarks or registered trademarks of their respective holders.

- "FOMA", "i-motion", "i-mode", "i-appli", "mopera", "WORLD CALL", "WORLD WING", "Deco-mail", "Chara-den", "ToruCa", "2in1", "DCMX", "OFFICEED", "docomo STYLE series" and logos of "FOMA", "i-mode", "i-appli", "Music&Video Channel" and "iC" are trademarks or registered trademarks of NTT DOCOMO.
- Microsoft®, Windows®, Windows Vista®, Windows Media® and PowerPoint® are trademarks or registered trademarks of "Microsoft Corporation" in the US and other countries.
- Microsoft Excel and Microsoft Word are product names of Microsoft Corporation in the U.S.A. In this manual, they may be described as Excel and Word.
- "Multitask" is a registered trademark of NEC Corporation.
- "Catch Phone (Call Waiting Service)" is a registered trademark of Nippon Telegraph and Telephone Corporation.
- Free Dial logo mark is a registered trademark of NTT Communications Corporation.
- Java and all Java-related trademarks and logos are trademarks or registered trademarks of Sun Microsystems, Inc. in the US and other countries.

- This product contains NetFront Browser, NetFront Sync Client of ACCESS CO., LTD. ACCESS, the ACCESS logo and NetFront are trademarks or registered trademarks of ACCESS CO., LTD. in the United States, Japan and/or other countries.
Copyright © 2009 ACCESS CO., LTD. All rights reserved.
- Powered by JBlend™ Copyright 2002-2009 Aplix Corporation. All rights reserved.
JBlend and JBlend-related trademarks are trademarks or registered trademarks of Aplix Corporation in Japan and other countries.
- This product contains Adobe® Flash® Lite® and Adobe Reader® LE technology of Adobe Systems Incorporated.
Adobe Flash Lite Copyright © 2003-2010 Adobe Systems Incorporated. All rights reserved.
Adobe Reader Mobile Copyright © 1993-2010 Adobe Systems Incorporated. All rights reserved.
Adobe, Adobe Reader, Flash and Flash Lite are either registered trademarks or trademarks of Adobe Systems Incorporated in the United States and/or other countries.
- QR code is a registered trademark of Denso Wave Inc.
- microSDHC logo is a trademark of D-3C,LLC.
- FeliCa is a registered trademark of Sony Corporation.
- "CROSS YOU" is a trademark of Sony Corporation.
- is a registered trademark of FeliCa Networks, Inc.
- Word, Excel and PowerPoint file display technologies are powered by Pictsel Technologies.
Pictsel, Pictsel File Viewer and the Pictsel cube logo are trademarks or registered trademarks of Pictsel Technologies.
- McAfee® is registered trademarks or trademarks of McAfee, Inc. and/or its affiliates in the US and/or other countries.
- G-GUIDE, G-GUIDE MOBILE and their logos are registered trademarks in Japan of U.S. Gemstar-TV Guide International, Inc. and/or its affiliates.

ACCESS™ NetFront™



Powered by
ADOBE FLASH™



pictsel



- QuickTime is a registered trademark of Apple Inc. in the US and other countries.
- ATOK + APOT of Justsystem Corporation is installed in this product as Japanese character conversion function.
"ATOK" "APOT (Advanced Prediction Optimization Technology)" are registered trademarks of Justsystem Corporation.
- This equipment is provided with the software licensed by Symbian Software Ltd. or the licensor © 1998-2010. symbian OS and Symbian OS are trademarks of Symbian Ltd. or the licensor.
- "Privacy mode" is a registered trademark of FUJITSU LIMITED.
- Bluetooth® and its logo are registered trademarks of Bluetooth SIG, Inc., and NTT DOCOMO uses them under license. Other trademarks and names inhere to their respective owners.
- Napster is a registered trademark of Napster, LLC. and/or its affiliates in the US and/or other countries.
- Manufactured under license from Dolby Laboratories. Dolby and the double-D symbol are trademarks of Dolby Laboratories.
- "Uni-Type" is a registered trademark of LIM Corp., Ltd.
- FrameSolid is the registered trademark of Morpho, Inc. in Japan and other countries.
- The auto object tracking technology utilized is TrackSolid™, a product of Morpho, Inc. TrackSolid™ is trademark of Morpho, Inc.
- Google is registered trademark of Google Inc.
- スーキーパー (Zookeeper) is a trademark or registered trademark of KITERETSU Inc.
- "日英版しゃべって翻訳 for F (J-E Speech Translation for F)" is trademark of ATR-Trek.
- Other company and product names mentioned in this manual are trademarks or registered trademarks of their respective holders.

- The abbreviations of operating systems (Japanese versions) below are used in this manual.
 - Windows 7 stands for Microsoft® Windows® 7(Starter, Home Basic, Home Premium, Professional, Enterprise Ultimate).
 - Windows Vista stands for Windows Vista® (Home Basic, Home Premium, Business, Enterprise and Ultimate).
 - Windows XP indicates the Microsoft® Windows® XP Professional operating system or Microsoft® Windows® XP Home Edition operating system.

Others

- FeliCa is a contactless IC card technology developed by Sony Corporation.
- This product contains a module developed by the Independent JPEG Group.
- The image interpolation technology utilized is FrameSolid, a product of Morpho, Inc.
- This product is equipped with the technologies of GestureTek, Inc. Copyright© 2006-2010, GestureTek, Inc. All Rights Reserved.
- “学研モバイル国語辞典 (Gakken Mobile JpnDic)”, “学研モバイル和英辞典 (Gakken Mobile JE Dic)”, “学研モバイル英和辞典 (Gakken Mobile EJ Dic)”, “今日は何の日 (Today's trivia)” and “今日の歴史 (Today in history)” are copyrighted by GAKKEN CO., LTD.
- This product is licensed based on MPEG-4 Visual Patent Portfolio License. The use of MPEG-4 Video Codec function is allowed for personal and nonprofit use only in the cases below.
 - Recording moving pictures and i-motion that conform to MPEG-4 Visual Standard (hereinafter referred to as MPEG-4 Video)
 - Playing MPEG-4 Videos recorded personally by consumers not engaged in profit activities
 - Playing MPEG-4 Video supplied from the provider licensed from MPEG-LA For further utilizing such as promotion, in-house use or profit-making business, please contact MPEG LA, LLC in U.S.
- Content owners use Windows Media digital rights management technology (WMDRM) to protect their intellectual property, including copyrights. This device uses WMDRM software to access WMDRM-protected content. If the WMDRM software fails to protect the content, content owners may ask Microsoft to revoke the software's ability to use WMDRM to play or copy protected content. Revocation does not affect unprotected content. When downloading licenses for protected content, you agree that Microsoft may include a "Revocation List" with the licenses. Content owners may require you to upgrade WMDRM to access their content. If you decline an upgrade, you cannot access a content that requires the upgrade.

General Inquiries <docomo Information Center>

0120-005-250 (toll free)

* Service available in: English, Portuguese, Chinese, Spanish, Korean.

* Available from mobile phones and PHSs.

■ From DOCOMO mobile phones
(In Japanese only)

■ From land-line phones
(In Japanese only)

(No prefix) 151 (toll free) 0120-800-000 (toll free)

* Unavailable from land-line phones, etc.

* Available from mobile phones and PHSs.

● Please confirm the phone number before you dial.

● For Applications or Repairs and After-Sales Service, please contact the above-mentioned information center or the docomo shop etc. near you on the NTT DOCOMO website or the i-mode site.

▶ NTT DOCOMO website <http://www.nttdocomo.co.jp/english/>

▶ i-mode site iMenuお客様サポート (user support) ⇒ ドコモショップ (docomo Shop) * In Japanese only

Loss or theft of FOMA terminal or payment of cumulative cost overseas <docomo Information Center>

(available 24 hours a day)

■ From DOCOMO mobile phones

International call access code
for the country you stay

-81-3-6832-6600* (toll free)

* You are charged a call fee to Japan when calling from a land-line phone, etc.

※ If you use F-07B, you should dial the number +81-3-6832-6600 (to enter '+', press and hold the '0' key for at least one second).

■ From land-line phones <Universal number>

International prefix number
for the universal number

-800-0120-0151*

* You might be charged a domestic call fee according to the call rate for the country you stay.

※ For international call access codes for major countries/international prefix numbers for the universal number, refer to DOCOMO International Services website.

● If you lose your FOMA terminal or have it stolen, immediately take the steps necessary for suspending the use of the FOMA terminal.

● If the FOMA terminal you purchased is damaged, bring your FOMA terminal to a repair counter specified by DOCOMO after returning to Japan.

Repairs

■ From DOCOMO mobile phones
(In Japanese only)

■ From land-line phones
(In Japanese only)

(No prefix) 113 (toll free)

0120-800-000 (toll free)

* Unavailable from land-line phones, etc.

* Available from mobile phones and PHSs.

Failures encountered overseas <Network Support and Operation Center>

(available 24 hours a day)

■ From DOCOMO mobile phones

International call access code
for the country you stay

-81-3-6718-1414* (toll free)

* You are charged a call fee to Japan when calling from a land-line phone, etc.

※ If you use F-07B, you should dial the number +81-3-6718-1414 (to enter '+', press and hold the '0' key for at least one second).

■ From land-line phones <Universal number>

International prefix number
for the universal number

-800-5931-8600*

* You might be charged a domestic call fee according to the call rate for the country you stay.

※ For international call access codes for major countries/international prefix numbers for the universal number, refer to DOCOMO International Services website.



Don't forget your mobile phone ... or your manners!

When using your mobile phone in a public place, don't forget to show common courtesy and consideration for others around you.

Sales: NTT DOCOMO, INC.
Manufacturer: FUJITSU LIMITED



Li-ion 00

To prevent damage to the environment, bring used battery packs to a docomo service counter, a docomo agent or a recycle center.

10.5 (1st Edition)
CA92002-6052