



Do

If you have weak heart, be careful when setting the Vibrate alert (vibration) or alert volume setting.
Could affect heart function.



Do

If it starts thunder while using the terminal outdoors, turn the power OFF immediately, and move to a safe location.
May be subject to lightning strike and could cause electric shock.



Do

Turn FOMA terminal OFF near high-precision electronic control equipment or electronic equipment using low-power signals.
May cause the equipment to fail or malfunction.

* Examples of electronic equipment to avoid.
Hearing aids, implanted pacemakers or defibrillators, other electronic medical equipment, fire alarms, automatic doors and other automatic control equipment.
Users wearing implanted pacemakers or defibrillators or other electronic medical equipment should check with the manufacturer or sales outlet about the effect of radio frequencies on the equipment.



Do

When the display or camera lens is accidentally broken, be careful of broken glass or exposed internal parts of FOMA terminal.
Surfaces of display and camera lens are made of plastic panels and they are structured for the glass not to scatter, however, if you mistakenly touch broken or exposed parts, you may be injured.

CAUTION

Don't

Do not swing FOMA terminal by its strap.
May cause the terminal damage or failure, or injury to yourself or others.



Don't

When using the motion tracking or motion sensor, check the safety around you, hold FOMA terminal firmly, and do not shake it unnecessarily.

The motion tracking and motion sensor are functions to operate by tilting or shaking FOMA terminal. There is a risk that FOMA terminal hits people or objects around you by shaking it too much, causing a serious accident or damage.



Don't

If you put a metal strap or the like to FOMA terminal, be careful not to let the strap hit people or objects around you when performing motion tracking or using motion sensor.

Accidents such as injury, malfunction or damage may result.



Don't

Do not place magnetic disks or cards with magnetic stripes near FOMA terminal or place inside and fold the terminal.

Data stored on media such as cash cards, credit cards, telephone cards and floppy disks may be erased if the storage medium is placed near the phone.



Don't

Do not bring magnetized objects close to FOMA terminal.
Bringing strong magnetism close may cause a malfunction.



Don't

If the display part is accidentally broken and liquid crystal leaks out, do not put the liquid in your mouth, inhale, or make contact with your skin. If the liquid gets into your eyes or mouth, rinse it with clean water and see a doctor immediately. And, if the liquid adheres to skin or clothing, use alcohol etc. to wipe it off, then wash with soap.
May cause loss of sight or skin problems.



Don't

Do not bring the speaker close to your ear when the ring alert is sounding or you are playing a melody with FOMA terminal.
May cause hearing loss.



Do

In rare cases, using the phone in some vehicle models can cause the vehicle's electronic equipment to malfunction or fail.
In this case, do not use the phone because it may hamper safe driving.



Do

Mobile phones can give some users skin problems such as itching, allergic reactions or rashes. If you develop skin problems, stop using the phone immediately, and see a doctor. FOMA terminal contains metal in the parts below.

Part	Material	Surface treatment
Charging jack	Copper	Gold plating
Slide and swing module	SUS	Black coating
Widget key	PC-ABS	Metal evaporation
Lock plate of back cover	SUS	None
Screw to fix slide and swing module	Copper	Black nickel plating
Screw to fix a case	Steel	Zinc plating



Do

When opening or closing FOMA terminal, take care not to have your fingers or strap caught by the terminal. May cause injuries or damages.



Do

When watching 1Seg, take a certain distance from the display in a fully bright place. May cause your eyesight to be impaired.

◆ Handling battery pack

- Check that the battery type matches the type displayed on the battery pack label.

Display	Battery type
Li-ion 00	Li-ion battery

⚠ DANGER



Don't

Do not connect a wire or other metal objects to the jack. And, do not carry or store FOMA terminal with objects like a metal necklace.

May cause the battery pack to leak, heat, burst or ignite.



Don't

Do not try to force the battery pack onto FOMA terminal if you are having trouble installing it. Always install it after checking that it is correctly oriented.

May cause the battery pack to leak, heat, burst or ignite.



Don't

Do not throw the battery pack into the fire.

May cause the battery pack to leak, heat, burst or ignite.



Don't

Do not nail the battery pack, hit with a hammer or step on it.

May cause the battery pack to leak, heat, burst or ignite.



Do

If the battery pack's fluid contacts eyes, immediately flush the eyes with clean water and see a doctor right away. Do not rub the eyes.

May cause loss of sight.

⚠ WARNING



Don't

If the battery pack seems to have abnormalities such as deformation or scratches due to an external impact or falling, stop using it immediately.

May cause the battery pack to leak, heat, burst or ignite, and the equipment to malfunction or catch fire.



Do

If the battery pack does not have a full charge after being charged for the specified time, stop charging it.

May cause the battery pack to leak, heat, burst or ignite.



Do

If the battery pack leaks or gives off a strange smell, immediately remove it from the vicinity of open flames.

The vapors from leaking battery pack fluid may ignite or explode.



Do

Be careful not to let your pet bite the battery pack.

May cause the battery pack to leak, heat, burst or ignite, and the equipment to malfunction or catch fire.

⚠ CAUTION**Do not discard old battery packs together with other garbage.**

Don't

May cause igniting or environmental destruction. Tape the terminals of old battery packs to insulate them, and then bring them into a sales outlet such as docomo Shop. If your local municipality has a battery recycling program, dispose of them as provided for.

**Do not charge a wet battery pack.**

Don't

May cause heat generation, ignition or rupture of the battery pack.



If the battery pack's fluid contacts skin or clothes, immediately flush the contacted area thoroughly with clean water.

Do

May hurt the skin.

◆ Handling optional devices (AC Adapter/DC Adapter/Desktop Holder/In-Car Holder)**⚠ WARNING**

Do not use the adapter (including battery charger) cord or power cord if it gets damaged.

Don't

May cause electric shock, heat or fire.



Do not use the AC adapter or desktop holder in a bathroom or other highly humid area.

Don't

May cause electric shock.



Always use the DC adapter with a negative-ground vehicle. Do not plug it into a positive-ground vehicle.

Don't

May cause fire.



When it starts to thunder, do not touch FOMA terminal and adapter (including battery charger).

Don't

May be subject to lightning strike and could cause electric shock.



Do not short the charging jack while it is connected to the outlet or cigarette lighter socket. Do not touch the charging jack with a part of your body such as your hand or finger.

Don't

May cause fire, malfunction, electric shock or injuries.



Place battery charger and desktop holder in a stable location while charging. Do not cover or wrap battery charger and desktop holder with a cloth, blanket, etc.

Don't

May cause FOMA terminal to be removed or the optional devices to be heated, resulting in fire or troubles.



Do not place heavy objects on the adapter (including battery charger) cord or power cord.

Don't

May cause electric shock or fire.



No wet hands

Do not touch the adapter (including battery charger) cord or outlet with wet hands.

May cause electric shock.



Do

Only use with the specified power source and voltage.

If incorrect voltage is used, this may cause fire or failure. When using FOMA terminal overseas, use AC Adapter for global use.

AC adapter : AC100V

DC adapter : 12 or 24V DC (specific for negative ground vehicle)

AC adapter for global use : Between 100V and 240V AC (Connect to the AC outlet for internal household use)



Do

If the DC adapter's fuse blows, replace it only with the specified fuse.

Using other fuses may cause fire or equipment failure. For the specified fuse, see the instructions that come with the DC adapter.



Do

Wipe off any dust that accumulates on the power plug.

May cause fire.



Do

When you connect the AC adapter to an outlet, make sure not to touch with metal such as metal straps and firmly connect to the outlet.

May cause electric shock, electrical short or fire.



Do

When you disconnect the adapter (including battery charger) from the outlet or cigarette lighter socket, do not pull the adapter (including battery charger) cord or power cord with excessive force; instead hold the plug to disconnect.

Pulling the cord could damage it, possibly leading to electric shock or fire.



Unplug

Always remove the power plug from the outlet when not using the adapter for an extended period.

May cause electric shock, fire or malfunction.



Unplug

Immediately remove the power plug from the outlet or cigarette lighter socket if water or other fluids get into the adapter.

May cause electric shock, smoke or fire.



Unplug

Always remove the power plug from the cigarette lighter socket when cleaning the equipment.

May cause electric shock.

◆ Handling UIM

⚠ CAUTION



Do

Be careful of the cut surface when removing UIM (ICs).

May hurt hands or fingers.

◆ Handling mobile phones near electronic medical equipment

- These precautions are based on the guidelines produced at the Electromagnetic Compatibility Conference Japan, regarding the protection of electronic medical equipment from radio waves emitted by mobile phone units.

⚠ WARNING



Do

Obey the following rules inside medical facilities.

- Do not bring FOMA terminal into operating rooms (ORs), intensive care units (ICUs) or coronary care units (CCUs).
- Turn FOMA terminal OFF in hospital wards.
- Turn FOMA terminal OFF in hospital lobbies and corridors if electronic medical equipment could be nearby.
- If the medical facility has specified zones where use or possession of mobile devices is prohibited, obey those instructions.
- If the function to automatically turn ON the power is set, cancel the setting before turning the power OFF.



Do

Turn FOMA terminal OFF in crowded trains or other public places where pacemaker or defibrillator wearers could be nearby.

FOMA terminal's signals may affect the operation of implanted pacemakers or defibrillators, and other devices.



Do

Wearers of implanted pacemakers or defibrillators must carry and use FOMA terminal at least 22 cm away from the implanted device.

FOMA terminal's signals may affect the operation of implanted pacemakers or defibrillators, and other devices.



Do

When electronic medical equipment other than implanted pacemakers or defibrillators are in use outside of medical facilities (such as in home care settings), check with the device manufacturer to determine how the device is affected by electrical signals. FOMA terminal's signals may affect the performance of electronic medical equipment.

Handling precautions

◆ General

- **Do not get FOMA terminal etc. wet**
 - FOMA terminal, battery back, adapter (including battery charger) and UIM are not waterproof. Do not use them in extremely humid places such as a bath, and do not expose them to rain. When you carry the terminal close to your body, dampness from sweat may cause internal corrosion and malfunction. Malfunctions deemed to have been caused by water are not covered by the warranty, and repairs may not be possible. Since these conditions are outside the scope of the warranty, a repair, if at all possible, is charged.
- **Clean FOMA terminal with a dry soft cloth (such as a cloth for eyeglasses).**
 - The display of FOMA terminal may have been applied special coating to improve clearness of the color LCD. When cleaning FOMA terminal, rubbing it roughly with a dry cloth can scratch the display. Take care when handling the unit, and clean it with a dry soft cloth (such as a cloth for eyeglasses). Drops of water or dirt left on the display can cause stains or remove the coating.
 - If FOMA terminal is wiped with alcohol, paint thinner, benzene or detergent, the printing may disappear or color may fade.
- **Clean the jack occasionally with a dry cotton swab.**
 - If the jack is dirty, the contact may become poor and the power may shut OFF. A dirty jack can result in poor charging, so clean it with a dry cloth or cotton swab.
- **Do not place FOMA terminal near an air-conditioner outlet.**
 - The rapid change in temperature may cause condensation, causing internal corrosion and malfunction.
- **When using, be careful not to subject excessive force to FOMA terminal or the battery.**
 - If FOMA terminal is crammed into a brimming bag or placed in a pocket and sat on, display, internal PCBs or battery pack may be damaged or malfunction. And, if external devices are plugged into the external connection jack (earphone/microphone jack), the breakage of the connector or malfunction may result.
- **Carefully read the separate instructions that come with FOMA terminal, adapter (including battery charger) and desktop holder.**
- **Do not rub or scrape the display with a metal piece etc.**
 - It may scratch the display, causing malfunction or damage.

- Do not press the surface of the touch panel strongly or operate it with sharp objects such as a nail, a ballpoint pen and a pin.
 - It may damage the touch panel.

◆ FOMA terminal

- **Avoid extreme temperature.**
 - Use FOMA terminal where the ambient temperature ranges between 5 and 35°C and humidity ranges between 45 and 85%.
- **FOMA terminal may affect land-line phones, TVs or radios in use nearby, so use it as far as possible from these appliances.**
- **Maintain a separate record of the data you saved in your FOMA terminal.**
 - If the data is deleted, DOCOMO assumes no responsibility for the loss of any data.
- **Do not drop FOMA terminal or subject it to shocks.**
 - May cause malfunction or damage.
- **Do not plug external devices into the external connection jack (earphone/microphone jack) at a slant, or do not pull it forcibly while it is plugged.**
 - May cause malfunction or damage.
- **Do not close FOMA terminal with the strap etc. held inside.**
 - May cause malfunction or damage.
- **It is normal for FOMA terminal to become warm during use or charging. Continue to use it.**
- **Do not leave FOMA terminal with the camera in areas under strong direct sunlight.**
 - May cause discoloring or burn-in of materials.
- **FOMA terminal should normally be used with the external connection jack cap and the microSD card slot cover closed.**
 - Dust and/or water brought into FOMA terminal cause troubles.
- **Do not use FOMA terminal with the back cover removed.**
 - It may cause the battery to come off, or may cause a malfunction or damage.
- **Do not attach labels or stickers on the exposed rear side of the FOMA terminal display.**
 - Labels or stickers may get stuck when FOMA terminal is opened/closed causing malfunction or damage.
- **Do not put strong impact on the fingerprint sensor or scratch its surface.**
 - It may cause malfunction of fingerprint sensor and disable authentication operation and pointing operation.
- **Clean the fingerprint sensor with a dry soft cloth (such as a cloth for eyeglasses).**

- If the fingerprint sensor is dirty or water is sit on its surface, the sensor does not read fingerprints, decreases its authentication performance, erroneously operates authentication function with no finger on it, disables pointing operation.
- While microSD card is being accessed, do not take the card out and do not turn off FOMA terminal.
 - It may cause data loss or malfunction.

◆ Battery pack

- The battery pack is a consumable part.
 - Replace the battery pack if FOMA terminal has extremely short operation time on a full charge, though it may vary by operating conditions. Purchase a new battery pack of the specified type.
- Charge the battery in an area within the proper ambient temperature range (5-35 ℃).
- Always charge before using it for the first time or after extended disuse.
- The operation time provided by the battery pack varies by the operating environment and battery pack's deterioration.
- The battery pack may swell out as it comes to near the end of its lifetime depending on the usage conditions, but it is not a problem.
- Be careful especially about the following points when preserving or leaving the battery pack for a long time.
 - Keeping under the state of the full charge (right after charging ends)
 - Keeping under the state of the empty charge (too exhausted to turn on FOMA terminal)
 They may cause the battery pack performance to be degraded or its lifetime to be shortened.

For necessary battery level to keep for a long time, the display of battery icon is a state of approximately 2 or 3 cells.

◆ Adapter (including battery charger)

- Charge the battery in an area within the proper ambient temperature range (5-35 ℃).
- Do not charge the battery in the areas below.
 - In areas of excessive humidity, dust or vibrations
 - Near land-line phones or TVs/radios
- It is normal for the adapter (including battery charger) to become warm while charging. Continue to use it.
- When using the DC adapter for charging, keep the vehicle engine running.
 - The vehicle's battery could become flat.
- When using an outlet with a mechanism preventing unplugging, follow the handling instructions for that outlet.
- Do not give strong shock. Do not deform the charging jack.
 - May cause malfunction.

◆ UIM

- Do not use excessive force to install/remove UIM.
- It is normal for UIM to become warm during use. Continue to use it.
- Note that DOCOMO assumes no responsibility for malfunctions occurring as the result of inserting and using a UIM with another IC card reader/writer.
- Always keep UIM ICs clean.
- Clean UIM with a soft, dry cloth (such as a cloth for eyeglasses).
- Maintain a separate record of the data you saved in UIM.
 - If the data is deleted, DOCOMO assumes no responsibility for the loss of any data.
- To preserve the environment, bring the old UIM to a sales outlet such as docomo Shop.
- Avoid extreme temperature.
- Take care not to scratch, touch accidentally or short IC.
 - May cause data loss or malfunction.
- Do not drop UIM or subject it to shocks.
 - May cause malfunction.
- Do not bend UIM or place heavy objects on it.
 - May cause malfunction.
- Do not install UIM into FOMA terminal with a label or sticker put on UIM.
 - May cause malfunction.

◆ FeliCa reader/writer

- FeliCa reader/writer function of FOMA terminal uses weak waves requiring no licenses for radio stations.
- It uses 13.56 MHz frequency band. When using other reader/writers in your surroundings, keep FOMA terminal away sufficiently from them. Before using the FeliCa reader/writer, confirm that there are no radio stations using the same frequency band nearby.

◆ CAUTION

- Do not use a remodeled FOMA terminal. Using a remodeled terminal violates the Radio Law.
FOMA terminal is certified according to technical standard conformance of specified wireless equipment based on the Radio Law, and as a proof of it, the "Technical Compliance Mark" is depicted on the engraved sticker of FOMA terminal.
If you remodel FOMA terminal by removing its screws, your certification of technical standard conformance becomes invalid.
Do not use FOMA terminal with its certification of technical standard conformance invalid as it violates the Radio Law.
- Be careful when you use FOMA terminal while driving a car etc.
Using a mobile phone while driving is subject to penal regulations.
If you inevitably receive a call, tell the caller that you will "call back" by handsfree, then park in a safe place and call back.
- Use the Bluetooth function only in Japan.
The Bluetooth function of the FOMA terminal is compliant with wireless standards and is authorized for use only in Japan.
If you use this function overseas, you may be punished.
- Use FeliCa reader/writer function only in Japan.
FeliCa reader/writer function of FOMA terminal conforms to Japanese radio standards.
If you use this function overseas, you may be punished.

Waterproofness

F-08A is waterproof to IPX5 (former JIS protection code 5)*¹ and IPX7 (former JIS protection code 7)*² standards if the external connection jack cap is strictly closed as well as the back cover is mounted and locked.

- *¹ IPX5 means that F-08A phone keeps functioning after directly applying a jet flow of 12.5 L/min. for at least 3 minutes from a distance of 2.5-3 m on a rotating turntable.
- *² IPX7 means that F-08A phone keeps functioning after it is slowly submerged to depth of 1 m in static tap water at room temperature, left there for 30 minutes and then taken out.

◆ Advantages in actual operation

- You can talk or watch 1Seg programs without using an umbrella in the rain (for rainfall of 20 mm or less per hour).
 - * When your hands or FOMA terminal are wet, avoid installing/removing the back cover or opening/closing the external connection jack cap.
- You can wash the FOMA terminal by submerging and moving it forth and back in still water in a basin etc.
 - * When washing, use only your hands, not a brush or sponge, with FOMA terminal locked, the back cover installed and the external connection jack cap held in position.
- You can use the FOMA terminal in a poolside area. Do not put the terminal in the water of a swimming pool.
 - * If FOMA terminal gets wet with water from the swimming pool, wash it as described above.
 - * Do not use FOMA terminal underwater. May cause malfunction.
- You can use FOMA terminal in a bathroom. Do not put the terminal in the bathtub.
 - * Never put FOMA terminal in hot spring water or water containing soap, detergent or bath powder.
 - * Do not use FOMA terminal underwater. May cause malfunction.

◆ Important precautions

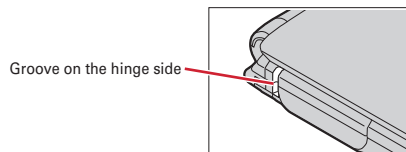
To keep the FOMA terminal waterproof, be sure to observe the points below.

- Securely close the external connection jack cap and back cover.
- Make sure that the cap and back cover are completely closed without floating.
- Before using, make sure that the back cover lever is at the LOCK position.

❖ Opening/Closing external connection jack cap

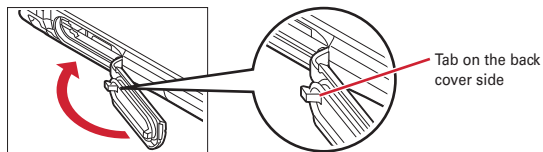
■ Opening

Place your finger at groove on the hinge side to open the cap.



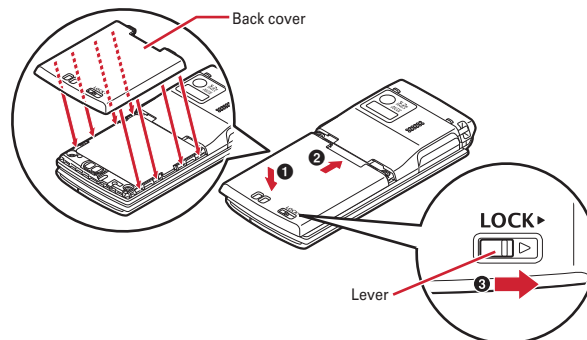
■ Closing

Close with the tab for the back cover at the rear side of the cap fitted into the concave of this terminal.



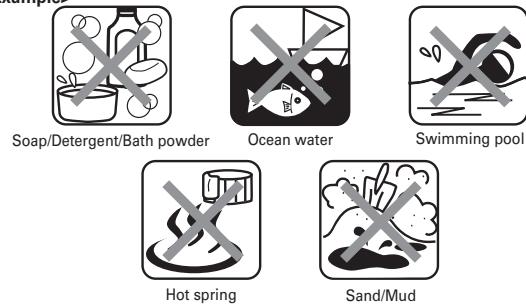
❖ Installing back cover

Align 8 tabs of the back cover with concaves of FOMA terminal. While pressing the back cover in the direction of ① so that there is no gap between FOMA terminal and back cover, slide the back cover in the direction of ② to install, then slide the back cover lever in the direction of ③ to lock.



- Do not use FOMA terminal underwater (including opening/closing and keypad operations).
- Do not let FOMA terminal get wet with liquids other than water at room temperature.

<Example>



To keep the FOMA terminal waterproof, replacement of parts is required every 2 years regardless of whether FOMA terminal appears normal or abnormal.

DOCOMO replaces the parts as a chargeable service. Bring FOMA terminal to a sales outlet such as a DOCOMO Shop.

◆ Precautions

- Securely lock the back cover and firmly close the external connection jack cap. Even a fine obstacle (one hair, one grain of sand, tiny fiber, etc.) put between contact surfaces may allow water to enter.
- If FOMA terminal gets wet with water or other liquids with the external connection jack cap or back cover open, the liquid may get inside the terminal causing electric shocks or malfunction. Stop using FOMA terminal, turn the power OFF, remove the battery pack and contact a DOCOMO-specified repair office.
- The external connection jack cap and the rubber packing of the inner lid play an important role for keeping waterproof. Do not remove or scratch them. Also, prevent dust from adhering to them.
If rubber gasket on the external connection jack cap or inner lid is damaged or deformed, replace it at DOCOMO-specified repair office.
- Do not leave water on FOMA terminal. In a cold region, water may freeze causing malfunction.
- Do not apply water flow stronger than allowed (e.g., such water flow that gives you pain when applied to your skin directly from a faucet or shower). May cause malfunction though F-08A provides waterproof performance of IPX5.
- Do not wash FOMA terminal in a washing machine etc.
- Accessories and optional devices are not waterproof.
When watching 1Seg etc. with FOMA terminal installed in the desktop holder, do not use it in a bath room, shower room, kitchen or lavatory even if it is not connected to the AC adapter.
- Do not put FOMA terminal in hot water, use it in a sauna or apply hot airflow (from a hair dryer etc.) to it.
- Never try to charge the battery pack when FOMA terminal is wet.
- Do not poke the microphone, earpiece or speaker with a swab or sharp object. May damage the waterproof performance.
- Do not leave FOMA terminal wet. May short-circuit the power jacks.
- FOMA terminal does not float on water.
- Do not let FOMA terminal fall. It may become scratched causing the waterproof performance to degrade.
- If the back cover is damaged, replace it. Water may enter inside from a damaged section causing troubles such as electric shocks or corrosion of the battery.

- Do not leave water on the microphone, earpiece or speaker. Such water may interfere with talking.

DOCOMO does not guarantee actual operations under all states. Malfunctions deemed to be caused by inappropriate operation by the customer are not covered by the warranty.

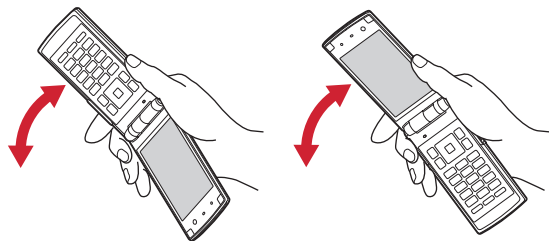
◆ Draining water when the FOMA terminal gets wet

When FOMA terminal is wet, water may flow out after wiping it off; drain the water following the steps below.

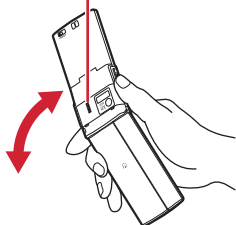
- ① **Wipe FOMA terminal surface with dry, clean cloth etc.**



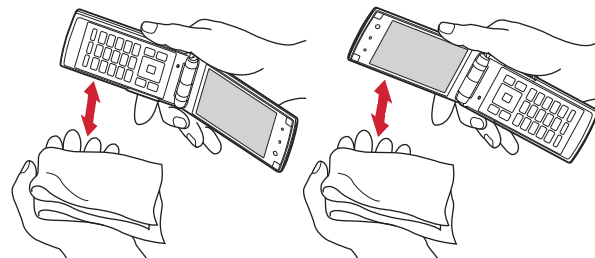
- ② **Shake FOMA terminal approximately 20 times, firmly holding its hinge section, until there is no more water splattering.**



To drain water off the speaker, shake FOMA terminal with the speaker upward



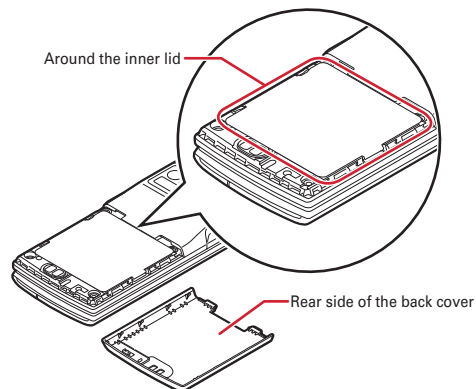
- ③ Softly press dry, clean cloth etc., against FOMA terminal to wipe off water remaining in the microphone, earpiece, speaker, keys or hinges.



- ④ Remove the back cover and wipe off any drops of water around the inner lid and the rear side of the back cover. After wiping off the water, install and lock the back cover.

Removing back cover→P41 ■Attaching ① in "Attaching/Removing battery pack"

* Never open the inner lid.



- ⑤ Wipe off water drained from FOMA terminal with dry, clean cloth etc.

- * Water, if any, remaining in FOMA terminal may ooze up after wiping off.
- * Do not wipe off water remaining in concaves directly with a cotton swab etc.

◆ Charging

Accessories and optional devices are not waterproof. Check the following before and after charging.

- Check that FOMA terminal is not wet. If wet, adequately drain FOMA terminal and wipe off water with dry, clean cloth etc. before connecting a desktop holder or opening the external connection jack cap.
- When charging the battery after FOMA terminal is wet, adequately drain it and wipe off water with a dry, clean cloth etc., before connecting a desktop holder or opening the external connection jack cap.
- When the external connection jack cap is opened for charging, close the cap firmly after charging.

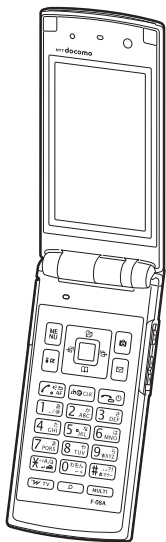
It is recommended that the desktop holder be used for charging to prevent water from seeping inside from the external connection jack.

- * Never try to charge the battery pack when FOMA terminal is wet.
- * Do not touch the AC adapter or desktop holder with wet hands. May cause electric shock.
- * Do not use the AC adapter or desktop holder in a place subject to water. May cause fire or electric shock.
- * Do not use the AC adapter or desktop holder in a bathroom, kitchen, lavatory or other highly humid area. May cause fire or electric shock.

Accessories and main options

<Standard accessory kit>

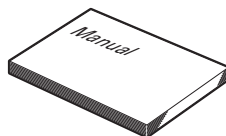
F-08A
(including Back Cover F39 and the written warranty)



Battery Pack F09

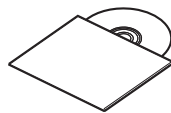


Instruction manual



* Quick Manual is appended on PXXX.

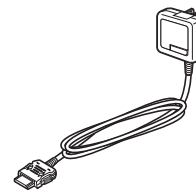
CD-ROM for F-08A



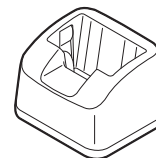
* The PDF version of "Manual for PC Connection" and "Kuten Code List" are contained in the CD-ROM.

<Main options>

FOMA AC Adapter 01/02
(including written warranty and operation manual)



Desktop Holder F30
(including operation manual)

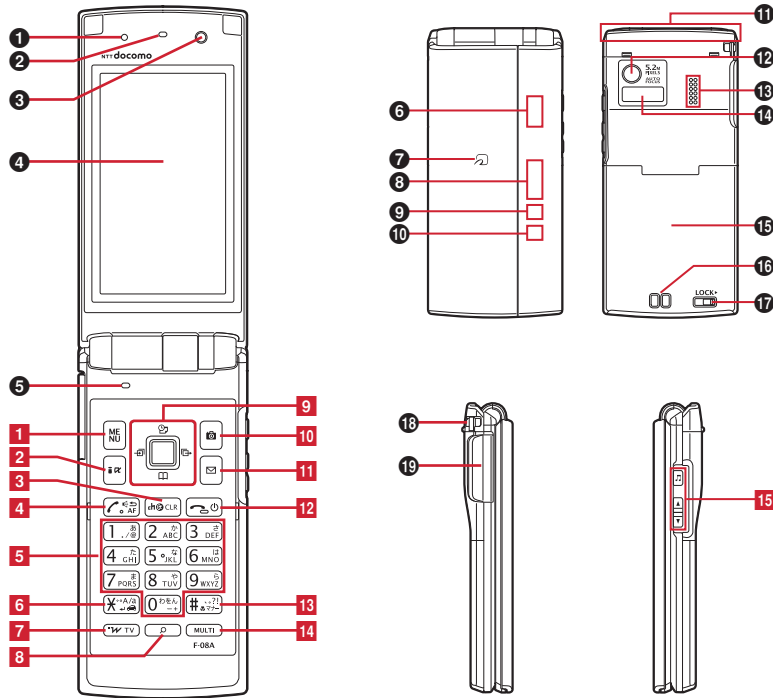


Other options→PXXX

Before Using the Handset

Part names and functions	26
Viewing display	29
Sub-display/Light overview	32
Selecting functions from menu	35
Using motion sensor	39
Using UIM (FOMA card)	41
Attaching/Removing battery pack	43
Charging	45
Checking battery level	Remaining battery level 48
Turning power ON/OFF	Power ON/OFF 49
Changing screen display to English	Select language 50
Setting date and time	Date & time 50
Notifying the other party of your phone number	Caller ID notification 51
Checking your own phone number	User information 51

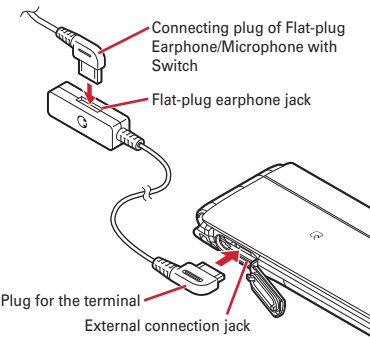
Part names and functions



<Using Earphone>

Connect an optional external connection jack compatible earphone.
When using an earphone that is non-compliant to external connection jack, connect an optional plug adapter to use it.

Example of connecting Flat-Plug Earphone/ Microphone with Switch (optional)



<1Seg antenna>

The terminal has a built-in 1Seg antenna, and an entire body of the terminal can work as an antenna.
To receive signals, minimize the covered part of FOMA terminal when holding it with your hands to watch 1Seg in better conditions. →P213