

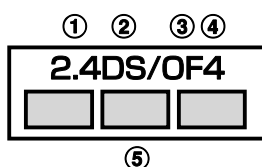
- **Wireless LAN**

Do not use Wireless LAN in a place where magnetized by electric products, AV, OA equipment, etc. or where electromagnetic wave is generated.

- If magnetism or electrostatic noise affects FOMA terminal, noise may be increased or communication may not be available (especially when using microwave oven, it may affect the terminal).
- Using near TV or radio may cause poor reception or TV screen may be blurred.
- When multiple wireless LAN access points exist near FOMA terminal and they use the same channel, search may not be performed correctly.

- **Frequency bands**

Frequency bands for WLAN devices are written on battery pack insert section of phone. Label description are as follows.



- ① 2.4 : Radio equipment that uses the 2400 MHz band.
- ② DS : The modulation is the DS-SS method.
- ③ OF : The modulation is the OFDM method.
- ④ 4 : The expected interference distance is 40 m or shorter.
- ⑤ : All bandwidths between 2400 MHz and 2483.5 MHz are used, and the bandwidth used by mobile object identification devices can be avoided.

Available channel varies by countries. To use WLAN overseas, check the conditions such as available frequency, regulation, etc. for the country. To use in airplane, confirm with airline company in advance.

Cautions on using 2.4 GHz devices


In the bandwidth used by WLAN devices, in addition to home electric appliances such as a microwave oven and industrial/scientific/medical devices, in-plant radio stations for identification of mobile objects used in production lines of a factory (a license is required), specified low power radio stations (a license is not required), or amateur radio stations (a license is required) can be in operation.

1. Before using this device, confirm that in-plant radio stations for identification of mobile objects, specified low power radio stations or amateur radio stations are not in operation in your neighborhood.
2. If this device generates harmful radio wave interference against in-plant radio stations for identification of mobile objects, change the using frequency promptly or stop using wireless LAN function, and contact "General Inquiries" on the last page of this manual, then consult about treatment for prevention of the interference (for example, installation of partitions etc.).
3. If this device generates harmful radio wave interference against in-plant radio stations for identification of mobile objects or amateur radio stations, or if any trouble, contact "General Inquiries" on the last page of this manual.

◆ FeliCa reader/writer

- **FeliCa reader/writer function of FOMA terminal uses weak waves requiring no licenses for radio stations.**
- **It uses 13.56 MHz frequency band. When using other reader/writers in your surroundings, keep FOMA terminal away sufficiently from them. Before using the FeliCa reader/writer, confirm that there are no radio stations using the same frequency band nearby.**

◆ CAUTION

- **Do not use a remodeled FOMA terminal. Using a remodeled terminal violates the Radio Law.**
FOMA terminal is certified according to technical standard conformance of specified wireless equipment based on the Radio Law, and as a proof of it, the "Technical Compliance Mark " is depicted on the engraved sticker of FOMA terminal.
If you remodel FOMA terminal by removing its screws, your certification of technical standard conformance becomes invalid.
Do not use FOMA terminal with its certification of technical standard conformance invalid as it violates the Radio Law.
- **Be careful when you use FOMA terminal while driving a car etc.**
Using a mobile phone while driving is subject to penal regulations.
However, absolutely necessary cases such as rescue of a sick person or maintaining public's safety are exempted.
- **Use the Bluetooth function only in Japan.**
The Bluetooth function of the FOMA terminal is compliant with wireless standards and is authorized for use only in Japan.
If you use this function overseas, you may be punished.
- **Use the Wireless LAN (WLAN) function only in Japan.**
The Wireless LAN function of FOMA terminal is compliant with wireless standards and is authorized for use only in Japan.
If you use this function overseas, you may be punished.
- **Use FeliCa reader/writer function only in Japan.**
FeliCa reader/writer function of FOMA terminal conforms to Japanese radio standards.
If you use this function overseas, you may be punished.

Waterproofness

F-12C provides waterproofness of IPX5*1, IPX8*2 with firmly closing the external connection jack cap and installing the back cover in a locked state.

- *1 IPX5 means that a phone keeps functioning after applying a jet flow of 12.5 L/min. from every direction from a distance of approximately 3 m for at least 3 minutes using water nozzle in 6.3 mm inner diameter.
- *2 For F-12C, IPX8 means that a phone keeps functioning after F-12C is slowly submerged to depth of 1.5 m in static tap water at room temperature, left there for 30 minutes and then taken out, and the mobile phone keeps shooting still images or moving pictures in approximately 30 minutes in static tap water at room temperature.

◆ What you can do with waterproofness of F-12C

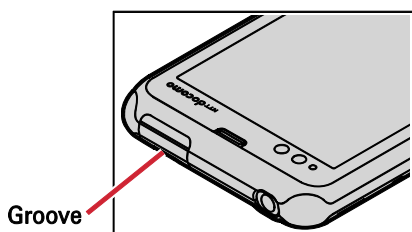
- **You can talk without using an umbrella in the rain (for rainfall of 20 mm or less per hour).**
 - When your hands or the FOMA terminal are wet, avoid installing/removing the back cover or opening/closing the external connection jack cap.
- **You can also shoot still images and moving pictures in the pool depth of 1.5 m.**
 - Do not perform other operations underwater than shooting still images and moving pictures.
 - If you put the terminal in water of swimming pool, be sure to have it within 30 minutes.
 - If FOMA terminal gets wet with water from the swimming pool, wash it in following procedure and drain water in specified procedure (→P17).
- **You can use FOMA terminal in a bathroom.**
 - Do not put the terminal in the bathtub. Do not use the terminal in hot water. May cause malfunction.
 - Never put FOMA terminal in hot spring water or water containing soap, detergent or bath powder.

- You can eliminate the dirt by shaking several times in static water of wash-basin.
 - In locked state with the back cover attached, with pressing and holding the external connection jack cap not to open, wash the terminal without using a brush or sponge.

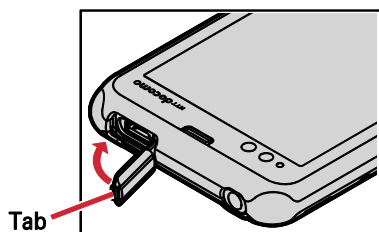
◆ To ensure waterproofness

To avoid water ingress, be sure to observe the following points.

- Do not throw any liquid other than room-temperature tap water on FOMA terminal, or soak it in such liquid.
- When using the external connection jack, pull the cap up with your finger by the groove as shown in the illustration.



After using the external connection jack, close the cap as the direction shown in the illustration, and make sure that the cap is completely closed without slack by pushing the tab in.



- For installing the back cover, see ④⑤ in "Attaching battery pack" of "Attaching/Removing battery pack". → P23

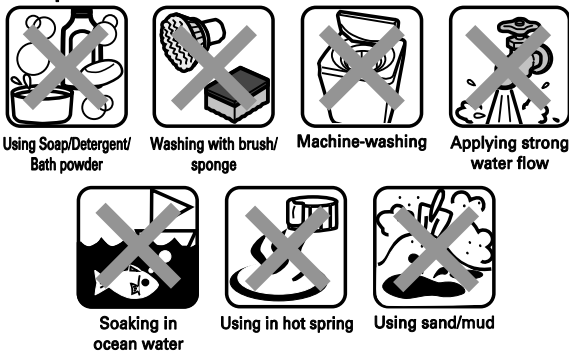
- Securely lock the back cover and firmly close the external connection jack cap. Even a fine obstacle (one hair, one grain of sand, tiny fiber, etc.) put between contact surfaces may allow water to enter.
- Do not poke the microphone, earpiece or speaker with a swab or sharp object.
- Do not let FOMA terminal fall. It may become scratched causing the waterproof performance to degrade.
- The external connection jack cap and the rubber packing of the rear side of the back cover play important roles for keeping waterproof performance. Do not deform the back cover by twisting etc. or peel off or damage the rubber packing. Also, prevent dust from adhering to it.

To keep FOMA terminal waterproofness, replacement of parts is required every 2 years regardless of whether FOMA terminal appears normal or abnormal. DOCOMO replaces the parts as a chargeable service. Bring FOMA terminal to a sales outlet such as a DOCOMO-specified repair office.

◆ Important precautions

Do not perform actions shown in the illustrations below.

<Example>



Observe the following precautions to use FOMA terminal properly.

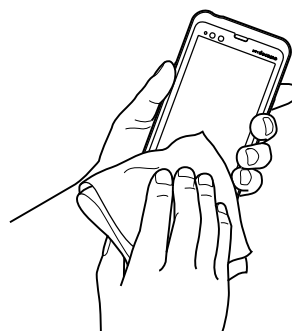
- Accessories and optional devices are not waterproof. When playing a moving picture etc. with FOMA terminal installed in the included desktop holder, do not use it in a bathroom, shower room, kitchen or lavatory even if it is not connected to the AC adapter.
- Do not apply water flow stronger than allowed (→P15) (e.g., such water flow that gives you pain when applied to your skin directly from a faucet or shower). F-12C provides IPX5 waterproof performances. However, it causes malfunction.
- Do not put FOMA terminal in hot water, use it in a sauna or apply hot airflow (from a hair dryer etc.) to it.
- Do not move in water or slam the terminal against the surface of water with FOMA terminal opened.
- If you put the terminal in tap water or in water of swimming pool, be sure to have it within 30 minutes.
- When you use the terminal in swimming pool, obey rules of the facility.
- FOMA terminal does not float on water.
- Do not leave water on FOMA terminal. May short-circuit the power jacks, or in a cold region, water may freeze causing malfunction.
- Do not leave water on the microphone, earpiece or speaker. Such water may interfere with talking.
- If the back cover is damaged, replace it. Water may enter inside from a damaged section causing troubles such as electric shocks or corrosion of the battery.
- If FOMA terminal gets wet with water or other liquids with the external connection jack cap or the back cover open, the liquid may get inside the terminal causing electric shocks or malfunction. Stop using FOMA terminal, turn the power OFF, remove the battery pack and contact a DOCOMO-specified repair office.
- If the external connection jack cap, or the rubber gasket on the rear side of the back cover is damaged or deformed, replace it at DOCOMO-specified repair office.

DOCOMO does not guarantee actual operations under all states. Malfunctions deemed to be caused by inappropriate operation by the customer are not covered by the warranty.

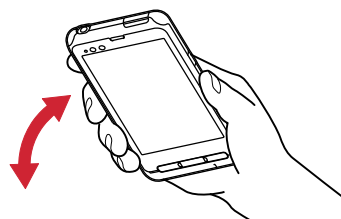
◆ Draining water from FOMA terminal

When FOMA terminal is wet, water may flow out after wiping it off; drain the water in the following steps.

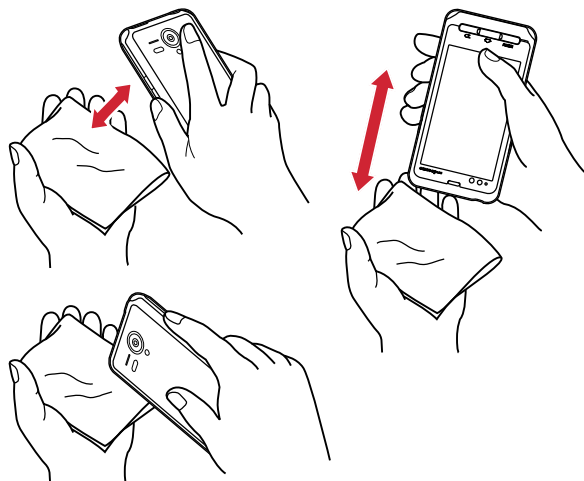
- ① Hold the FOMA terminal firmly and wipe off moisture on FOMA terminal surface and back side with dry, clean cloth etc.



- ② Shake FOMA terminal approximately 20 times, firmly holding it, until there is no more water splattering.



- ③ **Swing FOMA terminal in about 10 times against dry, clean cloth etc. to wipe off water remaining in the microphone, earpiece, speaker, keypad, or charging jack, etc.**



- ④ **Wipe off water drained from FOMA terminal with dry, clean cloth etc., and dry naturally.**
- Water, if any, remaining in FOMA terminal may ooze up after wiping off.
 - Do not wipe off water remaining in gaps directly with a cotton swab etc.

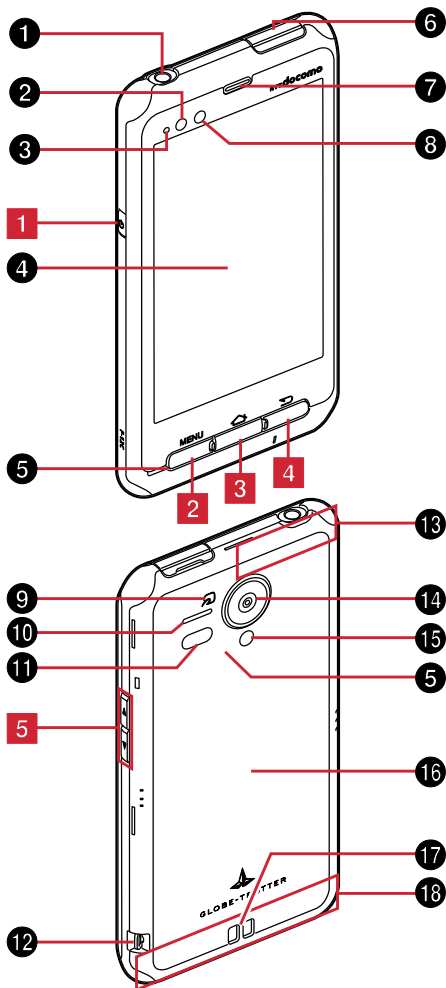
◆ Charging

Check the following before and after charging.

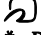
- Check if FOMA terminal is not wet. Never try to charge the battery pack when FOMA terminal is wet.
- Accessories and optional devices are not waterproof.
- When charging the battery when or after FOMA terminal is wet, adequately drain it and wipe off water with a dry, clean cloth etc., before connecting the accessory desktop holder or opening the external connection jack cap.
- When the external connection jack cap is opened for charging, close the cap firmly after charging. It is recommended to use the desktop holder for charging to prevent water from seeping inside from the external connection jack.
- Do not use the AC adapter or desktop holder in a bathroom, shower room, kitchen, lavatory or other highly humid area. May cause fire or electric shock.
- Do not touch the AC adapter or desktop holder with wet hands. May cause electric shock.

Before using the FOMA terminal

Part names and functions








<Functions>

- ① **Stereo earphone jack (waterproof)**
Connect an optional stereo earphone.
- ② **Proximity sensor**
Prevents the erroneous operation of the touch panel during a call.
* Putting a protective sheet or seal on the proximity sensor may cause false operation.
- ③ **Notification LED**
Red light : Charging (except when flashing green)
Flashing green : Receiving a call, notifying missed calls, incoming/unread mails, etc.
Green light once : Power ON
- ④ **Display (Touch panel)**
Touch with your finger to display operations or information about functions.
- ⑤ **Microphone**
Transmit your voice or record messages
- ⑥ **External connection jack**
Connect the included the FOMA charging microUSB adapter T01 or FOMA USB Cable for PC connection T01.
- ⑦ **Ear speaker**
Allows you to hear the other party's voice
- ⑧ **Light sensor**
Senses ambient brightness and automatically adjusts brightness of the display backlight
* When covered, automatic adjustment may not be performed properly.
- ⑨ **mark**
* Place  mark over the IC card reader to use Osaifu-Keitai, or if you download compatible applications, you can send and receive data via iC transmission. IC card cannot be removed.
- ⑩ **Speaker**
When playing back ring alert or music, or using speaker phone, hear the other party's voice from here.
- ⑪ **Infrared data port**
- ⑫ **Strap hole**
- ⑬ **GPS antenna**
* The antenna is built-in the FOMA terminal. Covering around the antenna by the hand may affect the quality.

- 14 **Camera**
Records still images or moving pictures
- 15 **Camera light**
Lights when shooting
- 16 **Back cover**
 - * To access UIM slot and the microSD card slot, remove the back cover and the battery pack.
 - * Do not remove the black sheet on the inside of the back cover. If you remove the sheet, IC card may not be read or write.
- 17 **Charging jack**
Use the jack to charge through the included desktop holder
- 18 **FOMA antenna**
 - * The antenna is built-in the FOMA terminal. Covering around the antenna by the hand may affect the quality.

<Key functions>

Key functions are as follows.

- 1 **Power key** 
Press : Returning to the Home screen or adjusting the other party's voice or speaker volume
Press and hold : Turning power on, activating/deactivating Silent mode, Public mode, Airplane mode, turning power off, restarting
- 2 **Menu key** 
Press : Display currently available options menu
Press and hold for 1 second or more: Switch display/not display the software keyboard when entering characters
- 3 **Home key** 
Press : Return to the home screen
Press and hold for 1 second or more : Display the recently used applications
- 4 **Back key** 
Press : Return to the previous screen
- 5 **Volume button** 
Press : Adjust the other party's voice or speaker volume
Press and hold for over a second : Activate/Deactivate Silent mode

UIM

The UIM is a card that can record user information such as your phone number etc.

- When UIM is not inserted to the FOMA terminal correctly, or UIM is abnormal, you cannot make/receive a call or send/receive a mail.
- With the FOMA terminal, a phone number cannot be saved to UIM.
- For details on UIM, refer to NTT DOCOMO UIM manual.

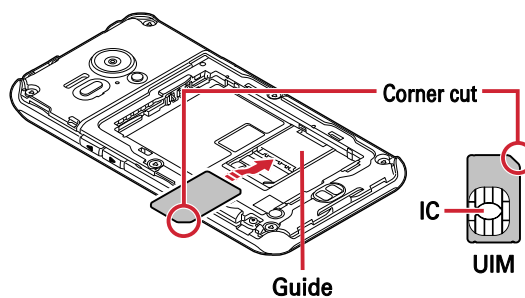
◆ Installing/Removing UIM

- Turn the FOMA terminal off, remove the back cover and the battery pack before installing/removing UIM.

❖ Installing UIM

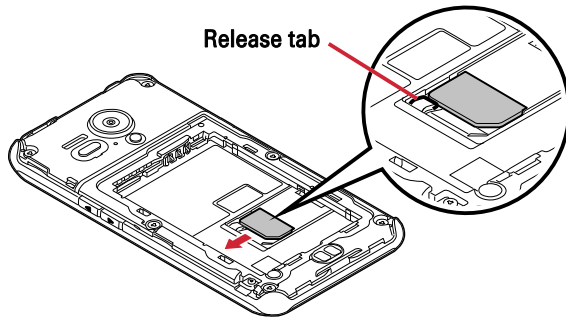
1 Insert UIM into the guide with the IC side facing down

- Check the orientation of UIM corner cut.
- Attaching/Removing the back cover and the battery pack → P21



❖ Removing UIM

- 1 Slide UIM in the direction of the arrow while pressing the release tab with your finger



✓ INFORMATION

- When handling UIM, take care not to touch or scratch the IC part. Note that inserting UIM forcibly into FOMA terminal may damage UIM.

◆ Security codes of UIM

There are two security codes, "PIN1 code" and "PIN2 code", for UIM. Both codes are set to "0000" at subscription. You can change them later. →P43

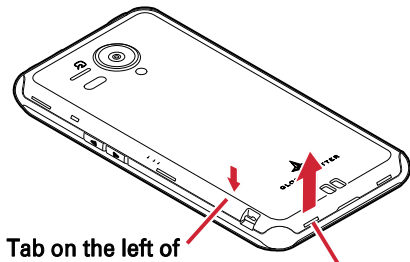
Battery pack

◆ Attaching/Removing battery pack

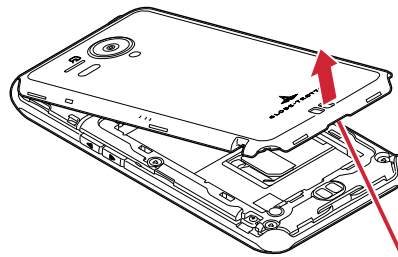
- Attach/Remove the battery pack after turning OFF the power.
- When you attach/remove the back cover, hold the FOMA terminal in your hand so that you will not scratch the display etc.
- Wipe off water on the FOMA terminal, and remove the back cover.
- Use Battery back F22 dedicated to the FOMA terminal

❖ Attaching battery pack

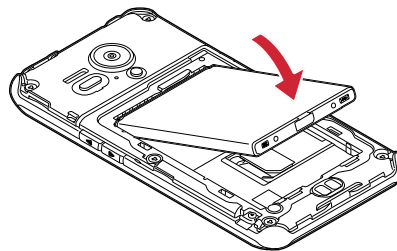
- ① Hook your nail under the back cover removing part① only, and lift the back cover until the tab on the left of the strap hole comes off



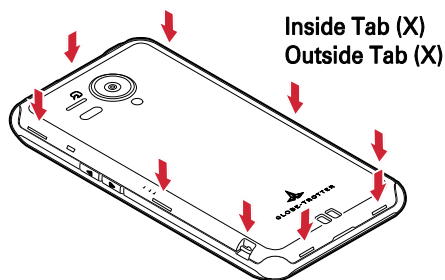
- ② Release your nail from the back cover removing part①, and then hook your nail under the back cover removing part②, and lift the back cover to remove



- ③ With the battery pack mark facing up, align the metal contacts of the battery pack with those of the FOMA terminal, and insert in the direction of the arrow



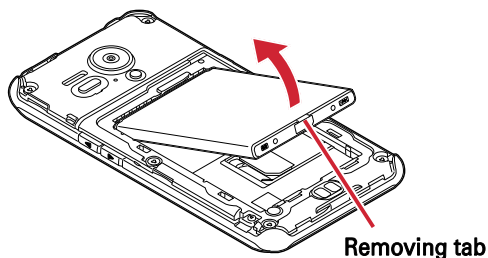
- ④ Check the orientation of the back cover, and attach it fitting to the FOMA terminal
- ⑤ Make sure to firmly press ● outside tabs one by one, and finally press inside tabs (●) firmly



- Check if there is no gap at all in order to maintain waterproofness, and attach securely.
- * Waterproofness→P15

❖ Removing battery pack

- ① Perform ① and ② on "Attaching the battery pack"
- ② Pinch the tab of battery pack and pick it up in the direction of the arrow to remove



Charging

The battery pack does not have a full charge at time of purchase. Charge the battery before using FOMA terminal.

❖ Precautions on charging

Make sure to install the battery pack into the FOMA terminal to charge.

- If you use the FOMA terminal while charging, it may take time to complete charging or charging may not complete. If you perform functions that consume a large amount of power, such as data communications or calls consecutively, the battery may be reduced continuously, causing it to go dead even while charging.
- It is normal for the FOMA terminal or AC adapter to become warm while charging. When the FOMA terminal becomes warm, charging may stop temporarily for the safety. When the FOMA terminal becomes extremely hot, stop using immediately.
- The following conditions will lead to a charging error. In the case of charging error, running functions are stopped, the power is turned off, and the notification LED lights red. Remove the charger or battery pack.
 - Charging voltage is high
 - The battery pack is over-charged/over-discharged
 - Charging is not complete after 5 hours or more

❖ Battery pack life

The battery pack is a consumable part. Each time it is charged, time available with each charging reduces. Talking on the phone for a long time while charging may reduce the battery pack lifetime.

When a time available with each charging is reduced to about a half from that of a new battery, replacement of the battery is recommended because it is near the end of life. The battery pack may swell out as it comes to near the end of its lifetime depending on the usage conditions, but it is not a problem.

- To promote environmental conservation, return your used battery pack to NTT DOCOMO sales outlets, our corporate agencies or the shops that collect used battery pack in your community.



Li-ion 00

❖ Available charging adapter

For details, refer to the operation manual of AC adapter or DC adapter.

FOMA AC Adapter 01 (optional) : 100V AC only

FOMA AC Adapter 02/FOMA AC Adapter 01 for Global use (optional) : Between 100V and 240V AC AC Adaptor has a plug dedicated to 100V AC (for domestic use). When using the AC adapter in the range of AC 100V and 240V overseas, a conversion plug adapter applicable to the country you are staying is required. Also, do not charge the battery with a transformer for overseas travel.

FOMA DC Adapter 01/02 (optional) : Use for charging in a car.

❖ Checking battery level

A battery icon is displayed on the status bar to show estimated battery level. →P28

- When the battery level is nearly empty, a warning message appears, and power is turned off after a few seconds.

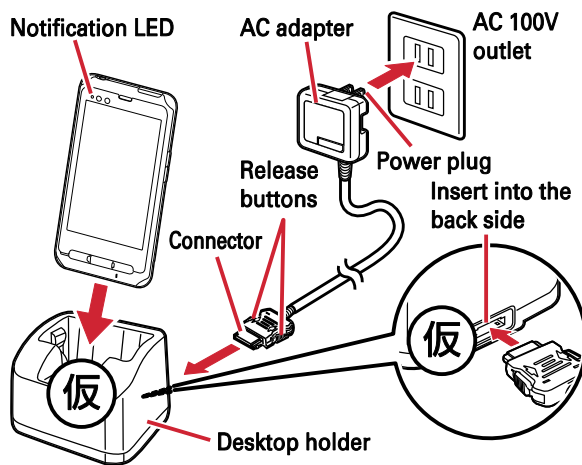
✓ INFORMATION -----

- When charging starts with the battery empty, the FOMA terminal may not be immediately activated after turning the power on. In this case, charge the FOMA terminal while keeping it turned off, and turn it on after a while.

◆ Charging with Desktop holder

Charge the FOMA terminal with FOMA AC Adapter 01/02 (optional) and the included desktop holder F35.

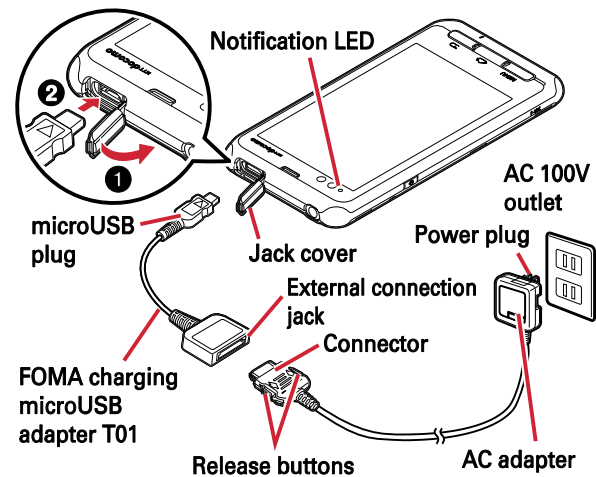
- ① Insert the connector of AC adapter horizontally to the included desktop holder, with the arrows mark side upward
- ② Unfold the AC adapters power plug and insert it into a 100V AC outlet
- ③ Insert it into the desktop holder with the FOMA terminal closed
 - Notification LED lights red while charging, and turns off when charging is complete
- ④ When charging is complete, remove the FOMA terminal from the desktop holder
- ⑤ Remove the AC adapter connector from the desktop holder
 - Pull it straight while pressing the release button of the connector.
- ⑥ Remove the AC adapter power plug from the wall outlet



◆ Charging with AC adapter

Charge the FOMA terminal with FOMA AC Adapter 01/02 (optional) and the included FOMA charging microUSB adapter T01.

- ① Insert the AC adapter connector to the external connection jack of the FOMA charging microUSB adapter
 - Insert the connector with the engraved side facing up into the external connection jack with label side facing down.
- ② Open the jack cap (❶) of FOMA terminal, insert the microUSB plug of the charging microUSB adapter into the jack. (❷)
- ③ Insert the AC adapter power plug into an outlet
 - Notification LED lights red while charging, and turns off when charging is complete.
- ④ After charging is completed, remove the microUSB plug from the FOMA terminal, and close the external connection jack cap.
- ⑤ Remove the AC adapter connector from the charging microUSB adapter
 - Pull it straight while pressing the release button of the connector.
- ⑥ Remove the AC adapter power plug from the wall outlet



✓INFORMATION -----

- FOMA charging microUSB adapter T01 is an adapter for connecting the FOMA terminal with the AC adapter. If you connect the FOMA terminal with a PC using the FOMA USB Cable etc., you cannot send/receive data or charge the FOMA terminal. For connection to a PC, use the included FOMA USB Cable for PC connection T01.

◆ Charging with FOMA USB Cable for PC connection

If you connect the FOMA terminal with a PC using the included FOMA USB Cable for PC connection T01, you can charge the FOMA terminal.

- When "新しいハードウェアの検索ウィザードの開始 (New hardware detection wizard)" appears on the PC, select "キャンセル (Cancel)".

Power ON/OFF

◆ Turning power ON

- 1 Press and hold  (approx. 2 seconds) until the FOMA terminal vibrates once and the notification LED lights green

The lock screen appears after a while.

❖ Turning power ON for the first time

When you turn power ON for the first time, you can make initial settings from "Getting started". The settings made can be changed later.→P28

- 1 "Settings" on each item→Follow the screen to set items

- 2 When settings are complete,  or  on "Getting started"

◆ Turning power OFF

- 1 Press and hold  until the phone options menu appears

- 2 [Power off"]→[OK]

Basic operation (Using touch panel)

The FOMA terminal display is composed of a touch panel designed for being touched directly with fingers. The FOMA terminal supports a motion sensor that senses the orientation or motion of the terminal. You can switch the display view by tilting the FOMA terminal vertical or horizontal.

◆ Notes for using the touch panel

The touch panel is designed for being touched lightly with fingers. Do not push it forcibly with a finger or press it with sharp objects (nail, ballpoint pen, pin, etc.).

- Touching the touch panel may not work in the following cases. Note that it may cause malfunction.
 - Operation with gloved hands
 - Operation with tip of fingernail
 - Operation with a foreign object on the display
 - Operation with protective sheet or seal on the display
 - Operation with wet hand
 - Operation under water

◆ Main operations

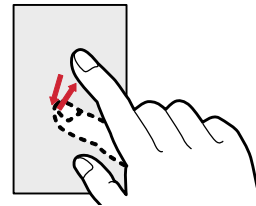
❖ Tap/ Tap 1 second or more

Tap : Tap an item or icon on the screen with your finger lightly. The operation becomes effective when you release your finger from the display.

Double-tap : Tap twice quickly.

Tap 1 second or more* : Touch an item or icon on the screen with your finger for 1 second or more and release it. The operation becomes effective when you release your finger from the display. You may need to perform another operation without releasing your finger after touching for 1 second or more depending on the operation.

* In this manual, the operation may be described as "(1 sec. or more)".

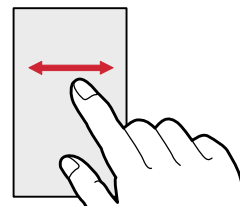


Example : Tap

❖ Slide/Flick

Slide : Touch the screen and drag to the desired position.

Flick : Flick your finger right or left on the screen. Switch screens back and forth when viewing several pages or data.

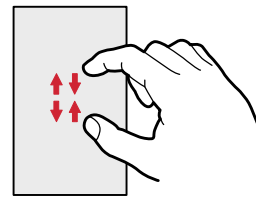


Example : Slide

❖ Pinch

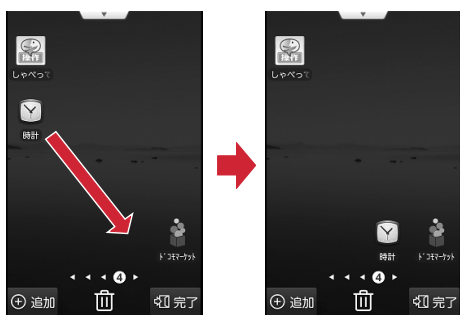
Touch the screen with two fingers and widen (pinch-out) or narrow (pinch-in) the fingers' distance.

- This operation is mainly for zooming in/out the screen such as web page or still image.



❖ Drag

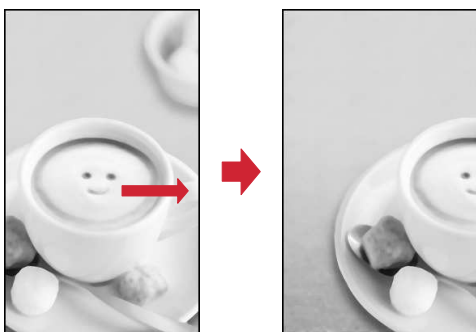
Touch an item or icon on the screen and move it to the desired position.



❖ Pan

Drag the screen in some direction to view the desired part.

- The operation is used when displaying in a single view is not available, such as viewing a web page, Office file, or enlarged still image etc.



❖ Scroll

Slide the screen up and down/right and left to view hidden parts.

- The operation is used when whole contact list or application list can not be displayed in a single view.



❖ Switching between landscape and portrait view

You can switch between landscape and portrait view by turning the FOMA terminal sideways/upright.

- Even when you change the orientation of the FOMA terminal, the screen may not change depending on the screen displayed.

Initial setting

You can set necessary items collectively for the first time to use the FOMA terminal.

- Each setting can be changed anytime.

1 From the Home screen, **MENU** → [Initial settings]

2 Set each item

Pedometer : Set information for using Pedometer. → P76

Voice adjust : Set age information for using Voice adjust.

Screen lock : Set screen lock. → P44

HOME screen wallpaper : Set wallpaper on the Home screen. → P31

Photo screen : Set an image for lock screen.

→ **PhoneBookCopy** : Copy phonebook. → P40

Google Account : Set Google Account.

Screen/Icon

◆ Icons on Status bar

Various conditions can be checked with notification icons and status icons appearing on the status bar.

■ Main notification icons

- : New Gmail message
- : New Email message
- : New sp-mode mail
- : New SMS message
- : Sending SMS is failed
- : New voice mail
- : New instant message
- : Upcoming calendar event
- : During alarm snooze
- : Playing a track
- : Problem with synchronization
- : Wi-Fi ON with wireless LN network available
- : File received via Bluetooth
- : USB is connected
- : Calling
- : Missed call
- : Call on hold
- : Status bar
- : Uploading data is completed
- : Downloading data is completed
- : Installing applications from Android Market etc. is completed
- : Updating Android Market applications is available
- : Hidden notification
- : microSD card is not inserted
- : microSD card is unmounted
- : Earphone is connected (terminal microphone)
- : Earphone is connected (earphone microphone)
- : DiXiM Server is activated