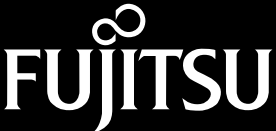




ScanSnap SV600

A New Perspective on Scanning



shaping tomorrow with you

Redefining what a document scanner can do!

Overhead scanning made simple

Scan newspapers, magazines or books directly without cutting or damaging them.

Preserve delicate documents or books

Some things can't be scanned through a feeder so ScanSnap SV600 operates by taking an elevated view altogether.

Scan business cards to large A3 size (double-letter) documents

ScanSnap SV600 breaks free from typical flatbed limitations by scanning content larger than just letter size. Simply position the document on the A3 scan mat and press scan.

Save time, save effort

Make it an easy job by scanning not only books or magazines but all types of content restrained in binders, spirals, folders, or clear sleeves... just flip the page and scan.



VI Technologies (Versatile Imaging)

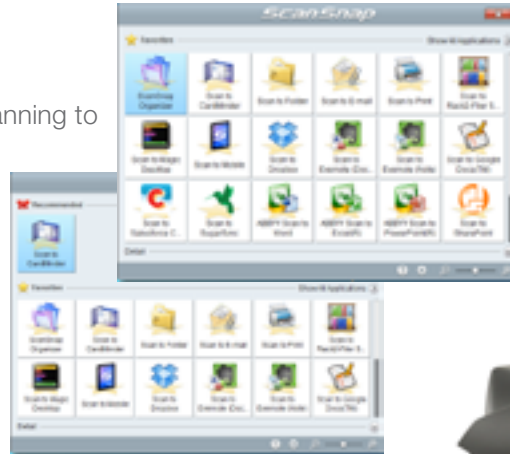
Combining high quality CCD optics and advanced LED illumination, ScanSnap SV600 uses advanced capture technologies to maximize field of depth and minimize unevenness page after page.

Smooth operation in overhead scanning

ScanSnap SV600 is enhanced with new customized features while continuing the ScanSnap concept: Simple, Fast and Compact.

Quick Menu saves time!

The Quick Menu pops up after scanning to allow users a fast and productive way to store, share or transform their scanned data either on the computer or into a favorite cloud service like Evernote or Dropbox.



Automatically crop several documents at once with "Multiple Document Detection"

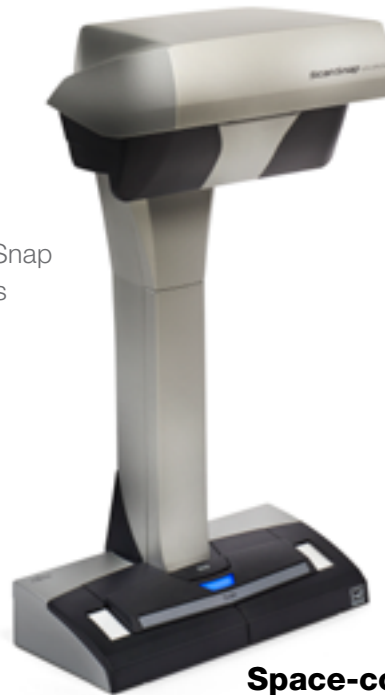
With an advanced cropping and orientation technology built-in, ScanSnap SV600 can scan several business cards, photos, newspaper clippings and other documents at one time.



ScanSnap Receipt™

ScanSnap Receipt allows users to easily scan and extract information from receipts, and export the data into CSV for easy tax filing. ScanSnap Receipt also supports multiple languages and currencies.*

*Supported languages: English, Spanish, French, German, Italian, Russian.
Supported currency's: USD (United States Dollar), CAD (Canadian Dollar), GBP (Great Britain Pound), EUR (Euro), RUB (Russian ruble), AUD (Australian dollar)



Performance matters.

With the touch of the power button, ScanSnap SV600 is ready to scan in just 3 seconds! And with each press of the scan button, a large A3 dimension scan area is captured in less than 3 seconds. Combined with intelligent image correction, great results are just a button push away.



Space-conscious design

Breaking the bounds of typical flatbed scanning, ScanSnap SV600 is easy on space as well as effort.

Easily create your own digital books

ScanSnap SV600 is your ultimate partner to scan books or magazines efficiently.

Step 1: Scan with one button!

Place the book on the mat and press the scan button.

Page Turning Detection – SV600 detects when a page is turned and automatically begins scanning.

Timed Mode – Set a fixed time interval and SV600 scans in real time with you.

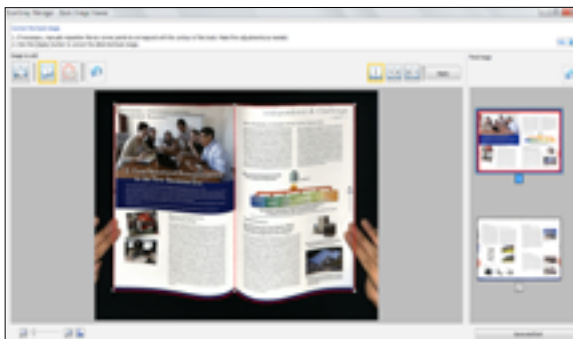
Step 2: Auto image correction

Auto Image Correction – Automatically crops, de-skews and sets the orientation of multiple sheets placed on the mat.

Auto Book Correction - Automatically flattens and corrects the curve distortion of books and magazines.

ScanSnap Sync

Quickly and easily synchronize your scanned documents between ScanSnap Organizer on your computer and the ScanSnap Connect App on your mobile device using Dropbox, Google Drive or OneDrive. ScanSnap Sync automatically synchronizes scanned documents between your computer and mobile device, giving you more flexibility to manage your scanned data.



Book image correction
Flattens and corrects curve distortion.



Point retouch function
Fingers captured during scanning can be removed.





■ General Specifications

Description	ScanSnap SV600	
Scanner type	Over Head system, simplex scanning	
Scanning modes	Color, grayscale, monochrome, Automatic (color, grayscale, monochrome detection)	
Image sensor	Lens reduction optics / color CCD x 1	
Light source	(White LED + lens illumination) x 2	
Optical resolution	Horizontal scanning: 285 to 218 dpi, Vertical scanning: 283 to 152 dpi *1	
Scanning speed (A3 landscape) *2	Auto mode *3	"Better mode" or "Best mode": 3 seconds / page
	Normal mode	Color / Grayscale: 150 dpi, Monochrome: 300 dpi 3 seconds / page *4
	Better mode	Color / Grayscale: 200 dpi, Monochrome: 400 dpi 3 seconds / page *4
	Best mode	Color / Grayscale: 300 dpi, Monochrome: 600 dpi 3 seconds / page *4
	Excellent mode	Color / Grayscale: 600 dpi, Monochrome: 1,200 dpi 3 seconds / page *4
Document size	Automatically recognizes document size, A3(landscape), A4(landscape), A5(landscape), A6(landscape), B4(landscape), B5(landscape), B6(landscape), Post card, Business card, Double Letter(landscape), Letter, Legal(landscape) and Customized size (Max: 432 x 300 mm (17.0 x 11.8 in.), Min: 25.4 x 25.4 mm (1 x 1 in.)) *5	
Document thickness	30 mm (1.18 in.) or less	
How to start scanning *6	Select one of the below. 1. Normal scan: Press "Scan" button for every page 2. Timed Interval Scanning (Timed Mode) 3. Page turning detection	
Interface *7	USB2.0 / USB1.1 (connector: B Type)	
Image processing functions	Deskew by text on document, Auto paper size detection, Auto image rotation, Auto color detection, Book image correction *8, Multiple document detection *9	
Magnification in vertical scanning (length)	±1.5%	
Power requirement	AC 100 to 240 V, 50 / 60 Hz	
Power consumption	Operating mode: 20 W or less Sleep mode: 2.6 W or less Auto Standby (Off) mode: 0.4 W	
Operation environment	Temperature: 5 to 35 °C (41 to 95 °F) Relative humidity: 20 to 80 % (Non-condensing)	
Dimensions (W x D x H)	210 x 156 x 383 mm	
Device weight	3 kg (6.613 lb)	
Environmental compliance	ENERGY STAR® / RoHS	
Driver	Specific driver (Does not support TWAIN / ISIS™)	

*1 Optical resolution differs due to different scanning angle on the same document. *2 Scanning speed may vary due to the system environment used. *3 Switch between "Better mode" and "Best mode" depends on the length of the document. A4 (portrait): 200 dpi, A6 size or below: 300 dpi *4 Time between actual start of scanning (scanning pad) and finish scanning. *5 For documents of thickness over 5 mm, the maximum document size is 400 x 300 mm. *6 When performing continuous scanning, time is needed for the scanning head to return to its original position. *7 Compatible with USB 3.0 port but connection will run as USB 2.0 speed. *8 Automatically correct distortion caused by the curve of an opened book or magazine. *9 Digitize multiple documents by automatically cropping several documents in one scan.

■ Cleaning Materials

Description	Part number	Remarks
Cleaner F1	PA03950-0352	100 ml bottle For cleaning the glass, camera, lamp etc of the scanning head.
Cleaning Wipe	PA03950-0419	1 pack (24 packets) Wet tissue with "cleaner F1". For cleaning the glass, camera, lamp etc of the scanning head.

■ Software *1

	Windows®	Mac OS
Driver *1 *2	ScanSnap Manager	ScanSnap Manager
Applications	ScanSnap Organizer	ScanSnap Organizer
	ScanSnap Receipt	ScanSnap Receipt
	CardMinder	CardMinder
	ABBYY FineReader for ScanSnap™	ABBYY FineReader for ScanSnap™
	Scan to Microsoft® SharePoint®	-
Nuance® Power PDF Standard *3	Nuance® PDF Converter for Mac *3	

*1 TWAIN or ISIS™ applications cannot be used directly. *2 Image file (JPEG, PDF and searchable PDF) can be generated by "One Touch". The function is operable with "ScanSnap Manager (ScanSnap specific driver)". *3 Please refer to included license certificate to download the software.

■ ScanSnap SV600 System Requirements

● Windows®

Recommended operating systems		Windows® 10 (32-bit / 64-bit) *1	Windows® 8.1 (32-bit / 64-bit) *1	Windows® 7 (32-bit / 64-bit)
Driver / Applications *2	ScanSnap Manager	Supported	Supported	Supported
	ScanSnap Organizer	Supported	Supported	Supported
	ScanSnap Receipt *3	Supported	Supported	Supported *4
	CardMinder *3	Supported	Supported	Supported
	ABBYY FineReader for ScanSnap™	Supported	Supported	Supported
	Scan to Microsoft® SharePoint®	Supported	Supported	Supported
Hardware requirements *5	CPU *6	Intel® Core™ i5 2.5 GHz or higher		
	Memory capacity *6	4 GB or more		
	Display	1,024 x 768 pixels or higher	800 x 600 pixels or higher	
	Disk capacity *7	4.2 GB or more of free hard disk space		
	DVD-ROM drive	Required for installation *8		
	USB port *6 *9	USB 3.0 *10 / USB 2.0 / USB 1.1		

*1 Operate as a desktop application. *2 Please refer to the ScanSnap website for the latest support information. *3 Please visit the website of the company for download information. (http://scansnap.fujitsu.com/g-support/en/) *4 Requires Service Pack 1. *5 The ScanSnap device may not work if the connected computer does not meet these requirements. *6 Scanning speeds may drop if recommended CPU, memory capacity and USB 1.1 requirements are not met. *7 Microsoft .NET Framework 3.5 SP1 will be installed (requires 500 MB of disk space) together with ScanSnap Manager, ScanSnap Organizer or CardMinder for systems that do not have .NET Framework 3.5 SP1 installed. When using "Scan to Google Drive" with ScanSnap Manager/ScanSnap Organizer, users also need to install either .NET Framework 4.0 or in-place updates of .NET Framework 4. *8 Requires Service Pack 1. *9 ScanSnap operates on both USB 2.0 and USB 3.0 without any difference in performance. *10 Some computers do not recognize the ScanSnap when it is connected to a USB 3.0 port. In this case, please use a USB 2.0 port. *System requirements may change depending on the duration of support and the support policy of the companies that make the software listed in the table above.

● Mac OS

Recommended operating systems		macOS v10.12 (Recommended: v10.12 or later) *2	OS X v10.11	OS X v10.10	OS X v10.9 (Recommended: v10.9.5 or later)	OS X v10.8 (Recommended: v10.8.5 or later)	Mac OS X v10.7 (Recommended: v10.7.5 or later)
Driver / Applications *1	ScanSnap Manager	Supported	Supported	Supported	Supported	Supported	Supported
	ScanSnap Organizer	Supported	Supported	Supported	Supported	Supported	Supported
	ScanSnap Receipt *2	Supported	Supported	Supported	Supported	Supported	Supported
	CardMinder	Supported	Supported	Supported	Supported	Supported	Supported
	ABBYY FineReader for ScanSnap™ *3	Supported	Supported	Supported	Supported	Supported	Supported
	Nuance® PDF Converter for Mac *3	Supported	Supported	Supported	Supported	Supported	Supported
Hardware requirements *4	CPU *5	Intel® Core™ i5 2.5 GHz or higher					
	Memory capacity *5	4 GB or more					
	Display	1,024 x 768 pixels or higher					
	Disk capacity	2.6 GB or more of free hard disk space					
	DVD-ROM drive	Required for installation *6					
USB port *5 *7	USB3.0 *8 / USB2.0 / USB1.1						

*1 Please refer to the ScanSnap website for the latest support information. *2 Please visit the website of the company for download information. (http://scansnap.fujitsu.com/g-support/en/) *3 Compatibility may differ depending on the software's version. *4 The ScanSnap device may not work if the connected computer does not meet these requirements. *5 Scanning speeds may drop if recommended CPU, memory capacity and USB 1.1 requirements are not met. *6 If you have no DVD-ROM drive, please visit the website of the company. (http://scansnap.fujitsu.com/g-support/en/) *7 ScanSnap operates on both USB 2.0 and USB 3.0 without any difference in performance. *8 Some computers do not recognize the ScanSnap when it is connected to a USB 3.0 port. In this case, please use a USB 2.0 port. *System requirements may change depending on the duration of support and the support policy of the companies that make the software listed in the table above.

■ Included items

- AC cable ● AC adapter ● USB cable ● Background Pad ● Set-up DVD-ROM ● Extenders (x2)

■ Option

Description	Part number	Remarks
Background Pad	PA03641-0052	Set in front of the scanner when scanning. * One pad is bundled with the scanner.

This scanner is designed to digitize materials that can be reproduced lawfully, in accordance with applicable copyright regulations and other laws. ScanSnap users are responsible for how they use this scanner. It is imperative that ScanSnap users comply with all applicable local rules and laws, including, without limitation, copyright laws when using this scanner.

*ABBYY and FineReader are trademarks of ABBYY Software, Ltd., which may be registered in some jurisdictions. ABBYY™ FineReader™ Engine ©ABBYY, OCR by ABBYY *Evernote is a registered trademark or trademark of Evernote Corporation. *Google and Google Drive are registered trademarks or trademarks of Google Inc. *Intel, Pentium, and Intel Core are registered trademarks or trademarks of Intel Corporation in the United States and other countries. *ISIS™ is a registered trademark of EMC Corporation in the United States. *iPad, iPhone and iPod touch are trademarks of Apple Inc. *Microsoft, Windows, Windows Vista, Excel, PowerPoint, SharePoint, Internet Explorer and OneDrive are either registered trademarks or trademarks of Microsoft Corporation in the United States and/or other countries. *Nuance, Power PDF, and PDF Converter are trademarks of Nuance Communications, Inc. and/or its licensors and is used under license. *ScanSnap, ScanSnap logo, ScanSnap Manager, ScanSnap Organizer and CardMinder are registered trademarks or trademarks of FUJITSU LIMITED in Japan. *Other company names and product names are the registered trademarks or trademarks of the respective companies.



FUJITSU PFD LIMITED, a Fujitsu company, has determined that this product meets the ENERGY STAR® guidelines for energy efficiency. ENERGY STAR® is a registered trademark of the United States.

For more ScanSnap related information, visit our website at : <http://scansnap.fujitsu.com/>

Safety Precautions	Be sure to carefully read all safety precautions prior to using this product and use this device as instructed.
Do not place this device in wet, moist, steamy, dusty or oily areas. Using this product under such conditions may result in electrical shock, fire or damage to this product.	

Specifications are subject to change without notice.



Fujitsu Computer Products of America, Inc.

1250 East Arques Avenue Sunnyvale, CA 94085-4701

(800) 626-4686 (408) 746-6000

info@fcpa.fujitsu.com

<http://us.fujitsu.com/fcpa>