

FACT SHEET

FUJITSU ETERNUS ADVANCEDCOPY MANAGER IMPLEMENTATION SERVICE

ETERNUS® ADVANCEDCOPY MANAGER IMPLEMENTATION SERVICE IS A CRITICAL PART OF YOUR ETERNUS STORAGE SYSTEM. ONCE INSTALLED, MANAGING YOUR BACK-UP PROTOCOLS WILL BE FAR LESS COMPLEX. WHY NOT LET THE EXPERTS FROM FUJITSU HELP YOU EXPEDITE THIS MISSION CRITICAL INITIATIVE?

BENEFITS

- Easily perform local replication of data for backups
- From anywhere on your network, remotely perform replication of data for Disaster Recovery

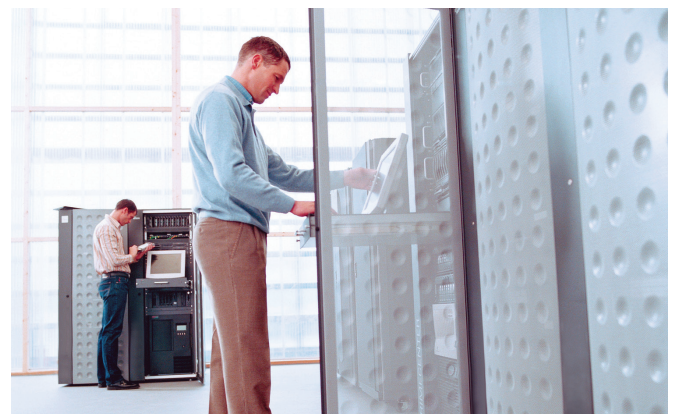
ETERNUS SF AdvancedCopy Manager (ACM) is Storage Management software that provides reliable high-speed backup, restore, and replication capabilities. This can be done by using the AdvancedCopy hardware functionality of ETERNUS disk storage systems which provides two distinct copy modes. The copy modes include:

1 - Snapshot High-Speed Copy

- **One Point Copy (OPC)** enables the creation of multiple, point-in-time copies of production data for fast data backup and recovery—increasing application availability. One Point Copy cost-effectively accelerates backup and recovery through economical, disk to disk operations in seconds versus the hours often required for traditional tape-based methods
- **QuickOPC** initially duplicates all of the original data like the standard OPC operation but maintains change tracking, and then on subsequent evocations copies only new data to refresh the clone image
- **SnapOPC and SnapOPC+** is a “copy-on-write” snapshot implementation and thus does not require 100% additional capacity as in the case of the clone services (OPC, QuickOPC). SnapOPC copies are read/write capable virtualized volumes that are composed of data blocks resident on the source volume and data blocks resident on a specialized Snap Data Volume (SDV). Because of the space efficiency of SnapOPC copies, this service is valuable for those applications that require frequent snapshots

2 - Synchronous High-Speed Copy

- **Equivalent Copy (EC)** enables the creation of a mirroring relationship between two RAID protected volumes within a single ETERNUS array. After an initial synchronization period, the EC mirrored pair can be stopped or suspended and the replica can be used for backup, testing, or other purposes.



As in the other replication services, the EC replica is read/write capable. After suspension, the mirror can be resumed and the volumes are brought back into a state of synchronization. Any updates applied to the target volume during suspension will be refreshed to the status of the primary volume.

- **Remote Equivalent Copy (REC)** provides remote synchronous and asynchronous mirroring options for business continuity protection. ETERNUS SF REC protects your business and improves productivity by providing highly available data mirroring over any distance. REC provides highly available data storage (from across campus to around the globe) through synchronous or asynchronous data mirroring between ETERNUS arrays. ETERNUS REC is array based, which means replication will not impact application performance.

WHAT YOU WILL BE PROVIDED

To take full advantage of AdvancedCopy Manager functions, the Fujitsu personnel will install, configure and test all required components. The ETERNUS AdvancedCopy Manager Implementation Service will provide the following services:

- AdvancedCopy Manager functionality
- Install and configure AdvancedCopy Manager Management software
- Install and configure AdvancedCopy Manager Agents (if required)

- Define and Create target LUNs to be used for advanced copy
- Setup, test, and confirm that AdvancedCopy is functioning properly
- Conduct a knowledge transfer to IT staff

After your ETERNUS AdvancedCopy Implementation service is completed, your working and verified ETERNUS AdvancedCopy configuration will play a key role in the safe-keeping of your valuable data. Additionally, your staff will be able to maximize the value of your ETERNUS AdvancedCopy initiative by applying the skills gained from the knowledge transfer.

ADDITIONAL PROFESSIONAL SERVICE OFFERINGS

Fujitsu America Professional Services can assist you in optimizing your investment in technology by offering a full range of consulting and customized services.

Contact your local Sales Team for more information to determine which services best fit your needs.

ABOUT FUJITSU AMERICA

Fujitsu America, Inc. is a leading ICT solutions provider for organizations in the U.S., Canada and the Caribbean. Fujitsu enables clients to meet their business objectives through integrated offerings including consulting, systems integration, managed services and outsourcing for enterprise applications, data center and field services operations, based on server, software, storage and mobile technologies. Fujitsu provides industry-oriented solutions for manufacturing, retail, healthcare, government, education, financial services and communications sectors. For more information, please visit: <http://solutions.us.fujitsu.com/>.

FUJITSU AMERICA, INC.

1250 East Arques Avenue
Sunnyvale, CA 94085-3470, U.S.A.
Telephone: 800 831 3183

or 408 746 6000

Web: <http://solutions.us.fujitsu.com>

Contact Form:

<http://solutions.us.fujitsu.com/contact>

Fujitsu, and the Fujitsu logo, and ETERNUS are registered trademarks of Fujitsu Limited in the United States and other countries. All other trademarks mentioned herein are the property of their respective owners. Product description data represents Fujitsu design objectives and is provided for comparative purposes; actual results may vary based on a variety of factors. Specifications are subject to change without notice.

Copyright ©2012 Fujitsu America, Inc.

All rights reserved.

FPC58-1345-05 01/12.

FCI_11.1433