

# FACT SHEET

## DATA MIGRATION ASSESSMENT

### EXPERT CONSULTING FOR PLANNING DATA MIGRATION TO YOUR STORAGE INFRASTRUCTURE

Professional Services from Fujitsu offer efficient consultation packages for existing infrastructure environments at a fixed price. This has been made possible by systematically analyzing a large number of successfully implemented consultation projects. The solution methods used have been standardized and combined with the experience of the comprehensive product and solution skills provided by the Fujitsu group. The resulting first-class consultation and analysis packages quickly provide you with specific information and suggested improvements for the infrastructure involved.

#### CUSTOMER'S REQUIREMENTS

The experience gathered from a multitude of Fujitsu migration projects has highlighted four recurring themes:

- Many organizations are confronted with a constantly increasing amount of data.
- Critical business data must be available at all times and protected against loss. Additionally, availability and performance are often subject to specific SLAs (Service Level Agreements).
- Migration projects are often planned without detailed investigation of the actual storage environment.
- The migration itself is often not performed optimally, and typically the methods used, though easier to perform, ultimately result in the migration taking far longer than necessary.

#### THE FUJITSU SOLUTION

This fixed-price service systematically identifies possible migration strategies in a storage environment and defines clear recommendations for performing the migration of data. Fujitsu experts examine the storage infrastructure, as well as the number of hosts that are present in the IT environment.

The information gathered in this assessment is analyzed and reported in a structured format, which provides the basis for professional migration planning.



### CUSTOMER'S BENEFITS

This service provides expert analysis of the existing storage environment and quickly delivers:

- Structured methods for efficiently migrating data
- The option to immediately implement in a Fujitsu Data Migration Service
- Robust and detailed reporting of the maturity level of the storage environment
- An excellent basis for future decision-making

### SERVICE DESCRIPTION

#### Service Preparation Workshop

Our consultants meet with you to prepare for the service, collect information about the target infrastructure, discuss specific goals and verify key contacts for the service delivery.

#### Gathering Information

In a discussion with your IT storage personnel all necessary information is collected.

### Analysis of Data

The collected data is analyzed as follows:

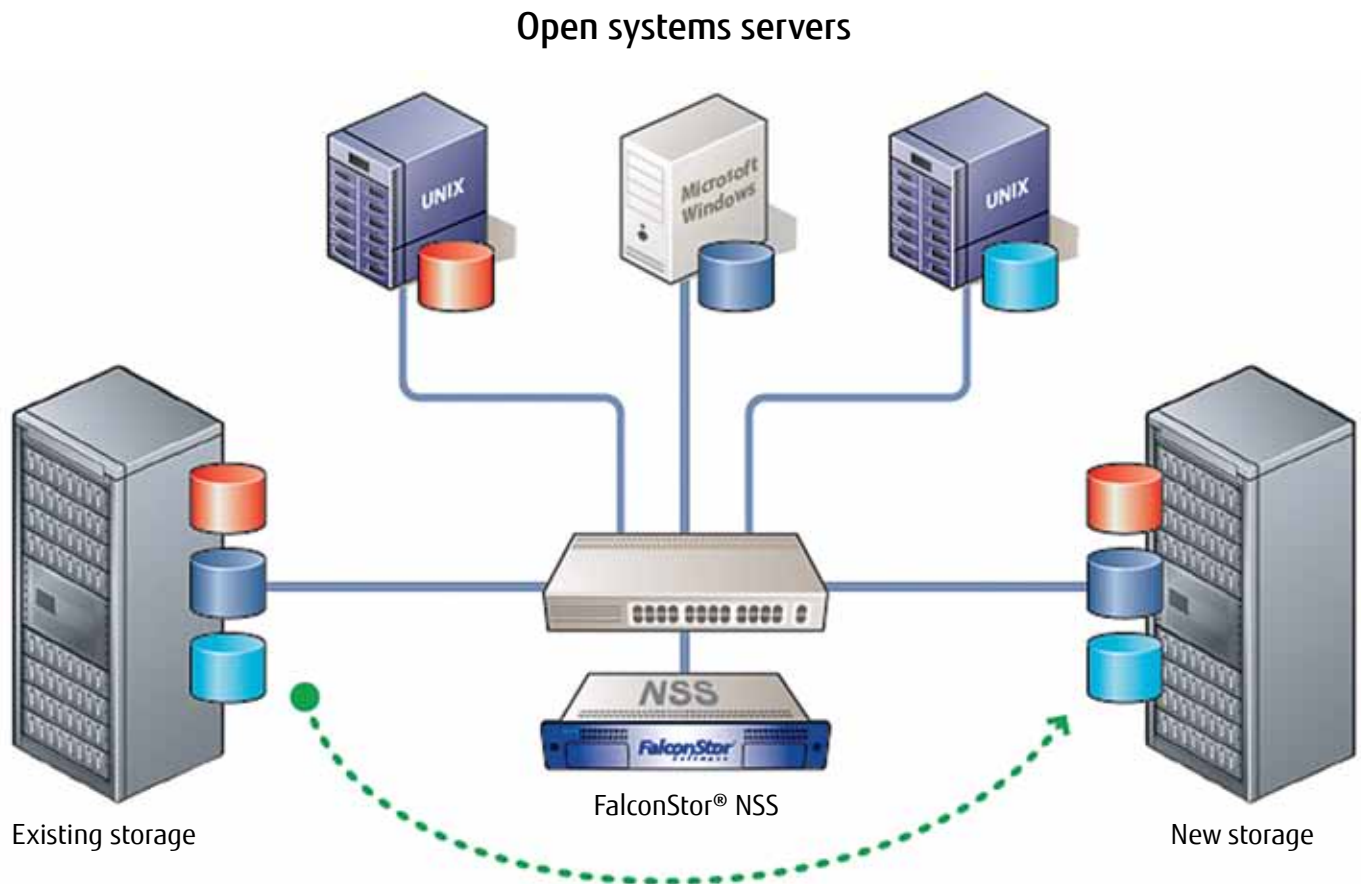
- Types and brands of storage systems present
- The quantity of data to be migrated
- Location and organizational structure of the data to be migrated
- Quantity and type of hosts that are to be migrated to a new storage system
- Type of SAN infrastructure which is in place

### Prepare Customer Report

The data analysis is summarized and documented (tables, graphs and trend diagrams). Migration proposals for the environment are created.

### Presentation of Report & Recommendations

Fujitsu consultants present the recommendations of the assessment to you. You receive a comprehensive report detailing a summary of the possible migration measures. This can be directly followed by a **Fujitsu Data Migration Service** if requested.



## SERVICE CONDITIONS

The Customer agrees to the following conditions as pursuant to the delivery of the service defined:

- Provide contact to necessary storage staff
- Provide appropriate meeting rooms

The Migration Assessment Service is provided on a fixed price basis for a maximum of 10 systems comprising of:

- Servers (data structure analysis)
- A maximum of 5 Online Storage Systems (capacity and utilization analysis) and additionally the connected SAN network (SAN infrastructure analysis).

The services covers a maximum of 2 days on-site visits to the customer site

Additional options, such as additional customer meetings, or extension of the scope of the assessment to other areas such as IP network, applications (databases and messaging systems), as well as further servers and online storage systems or data protection can be provided upon request, as additional chargeable services.

This Professional Service is provided under the conditions valid for Fujitsu America, Inc. services.

## ORDERING

The Migration Assessment Service is available from your local Fujitsu America sales office. When ordering please quote:

<b>Title</b>	Data Migration Assessment
<b>Order</b>	FTSPS-ET-11005F

## FUJITSU PROFESSIONAL SERVICES

In addition to the Data Migration Assessment, Fujitsu provides a range of professional services, efficient first-class consultation and analysis packages which quickly provide you with specific information and suggested improvements for existing infrastructure environments at a fixed price.

### Dynamic Infrastructures

With the Fujitsu Dynamic Infrastructures approach, Fujitsu offers a full portfolio of IT products, solutions and services, ranging from clients to datacenter solutions, Managed Infrastructure and Infrastructure-as-a-Service. How much you benefit from Fujitsu technologies and services depends on the level of cooperation you choose. This takes IT flexibility and efficiency to the next level.

## Computing products

- PRIMERGY®: Industrial standard server
- SPARC Enterprise®: UNIX® server
- PRIMEQUEST®: Mission-critical IA server
- ETERNUS®: Storage system

## Software

<http://solutions.us.fujitsu.com/>

## FUJITSU GREEN POLICY INNOVATION

Fujitsu Green Policy Innovation is our worldwide project for reducing burdens on the environment. Using our global know-how, we aim to resolve issues of environmental energy efficiency through IT. Please find further information at: [www.fujitsu.com/global/about/environment/](http://www.fujitsu.com/global/about/environment/)

## **ABOUT FUJITSU AMERICA**

---

Fujitsu America, Inc. is a leading ICT solutions provider for organizations in the U.S., Canada and the Caribbean. Fujitsu enables clients to meet their business objectives through integrated offerings including consulting, systems integration, managed services and outsourcing for enterprise applications, data center and field services operations, based on server, software, storage and mobile technologies. Fujitsu provides industry-oriented solutions for manufacturing, retail, healthcare, government, education, financial services and communications sectors. For more information, please visit: <http://solutions.us.fujitsu.com/>.

## **FUJITSU AMERICA, INC.**

1250 East Arques Avenue  
Sunnyvale, CA 94085-3470, U.S.A.  
Telephone: 800 831 3183

or 408 746 6000

Web: <http://solutions.us.fujitsu.com>

Contact Form:

<http://solutions.us.fujitsu.com/contact>

Fujitsu, PRIMEQUEST, ETERNUS, and the Fujitsu logo are trademarks or registered trademarks of Fujitsu Limited in the United States and other countries. PRIMERGY is a trademark of or registered trademark of Fujitsu Technology Solutions in the United States and other countries. SPARC ENTERPRISE is a trademark or registered trademark of SPARC International, Inc. in the United States and other countries. UNIX is a registered trademark of The Open Group in the United States and other countries. FalconStor is a trademark or registered trademark of FalconStor, Inc. in the United States and other countries. All other trademarks referenced herein are the property of their respective owners.

Product description data represents Fujitsu design objectives and is provided for comparative purposes; actual results may vary based on a variety of factors. Specifications are subject to change without notice.

Copyright ©2012 Fujitsu America, Inc.

All rights reserved.

FPC58-3025-01 01/12.

FCI\_11.1414

