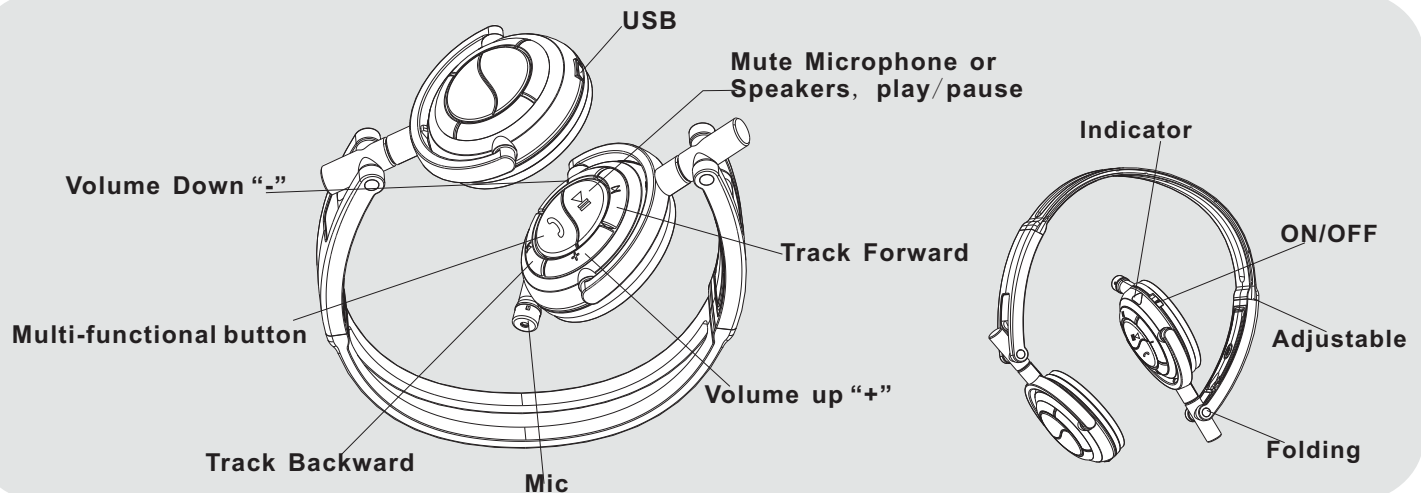


FJ-800

Bluetooth



How to Power On/Off your Headset

To Power Your Headset On/Off

Operation steps:

1. Power on: Move "ON/OFF" button to enter "ON" status (current on)
2. Power off: Move "ON/OFF" to enter "OFF" status (current off)

Pairing Your Headset and Mobile Phone

With the headset and mobile phone putting near each other:

Operation steps:

1. Connection: under ON mode, hold the multi-functional button for 8-10 seconds until the LED red & blue light flashes alternately.
2. Perform a discovery device from the mobile phone. For details on device discovery for your mobile phone, please refer to the mobile phone user's guide. When the scan is complete, the mobile phone displays "device found".
3. Select the FJ-800 from the discovered devices list and perform according to the clues on the mobile phone.
4. During the confirmation of the mobile phone, enter the password "0000" and confirm that the headphone has been paired successfully with the mobile. The device ID has been stored in the mobile phone's memory. Pairing is successful when the LED turns to blue for 3 seconds and a Di— sounds from the bluetooth headphone.

Using wireless bluetooth headset

1. Dialing phone: When the headphone is connected with the mobile phone, dial the number on the mobile phone keyboard as usual, the sound will be transferred to your bluetooth automatically.
 2. Answer and end the call: Under the connected condition, when there is a call with the music sound, press multi-functional button one time to accept it,; Press the button one time when you need ending the call.
 3. Reject a call: If you want to reject a call, press multi-functional button for 6-8 seconds, meantime, there will be a di-- sound, the call is denied.
 4. Redialing function: Press the multi-functional button two times consecutively, the mobile phone will redial the last number in your list of calling out.
 5. Answer a call with the stereo music on: When your are listening to the stereo music with your headphone which had been connected with the wireless hardware, the mobile phone will turn to answering status automatically when there is a call. When you hear the calling sound press the multi-functional button to answer it, when you end the call, the bluetooth will switch to player automatically.
 6. On listening to music, press shortly "last" and "next" to play the music, and "pause/play" is also available
 7. Adjust the volume: press "+" for augment, "-" for minishing.
 8. When the headphone model stored in your mobile phone, you only need moving the "ON/OFF" button to "ON" to re-connect.
- Note: the standby time can be prolonged under "OFF" status

Charging Your Headset

FJ-800 Bluetooth headset uses a rechargeable battery that must be charged fully before you use the headset for the first time.

1. Plug the A/C charging adapter into the headset's USB interface.
2. Charging: LED is red when charging, blue when finished.
3. The charging time is about 2-5 hours.
4. Remove AC charging adapter from the headset.
5. Battery electricity weak: when the bluetooth lacks of power, the red and blue lights will flash automatically, It means you should charge the headphone at this moment.

FJ-800

Bluetooth

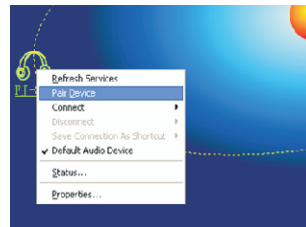
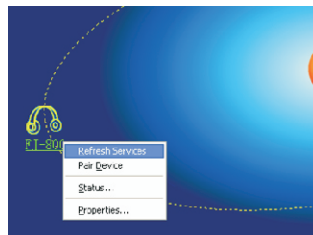
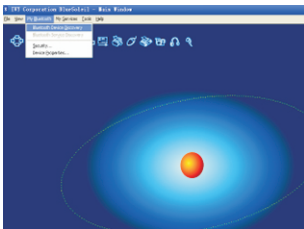
☉ Pairing your headphone and Computer-----

1.Connection: Under ON mode, hold the multi-functional button for 8 seconds until the LED red & Blue light flashes alternately.

2.Open the Blue Soleil 2.3.0.0 software, search the Bluetooth devices.

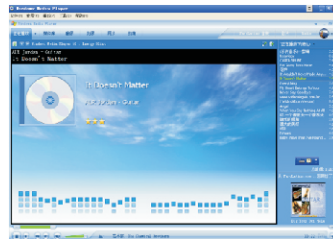
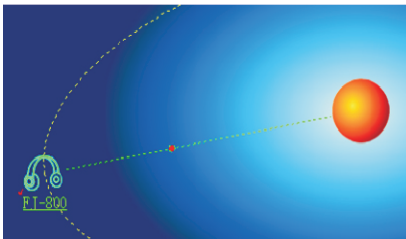
3.Select the headphone then refresh the services, you will see the device FJ-800.

4.Pair FJ-800 the password is "0000"

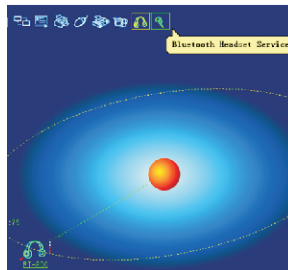


5.Connect the device, select "bluetooth AV service", the FJ-800 is connected with your computer fully, Listen to your music from the Windows Media Player

6.When the headphone is connected with computer, cell phone also can be paired, the headphone will turn to answer the call when you are listening to music, the music will go on automatically after you end the call.



7.Turn to "Bluetooth headset service" when you want to talk with somebody on Skype, after dial the call, press the multi-functional button to transfer to the calling and talking status.



8.Please refer to cell phone user manual side for other use details.

9.Supporting Software and hardware :

1)Blue Soleil 2.3.0.0,&3.0.00

2)CSR 2.0 Dongle

3)Windows Media Player

IMPORTANT INFORMATION REQUIRED BY THE FCC

THE MANUFACTURER IS NOT RESPONSIBLE FOR ANY RADIO OR TV INTERFERENCE CAUSED BY UNAUTHORIZED MODIFICATIONS TO THIS EQUIPMENT. SUCH MODIFICATIONS COULD VOID THE USER'S AUTHORITY TO OPERATE THE EQUIPMENT.

This device complies with Part 15 of the FCC Rules. Operation is subject to the following two conditions: (1) this device may not cause harmful interference, and (2) this device must accept any interference received, including interference that may cause undesired operation.