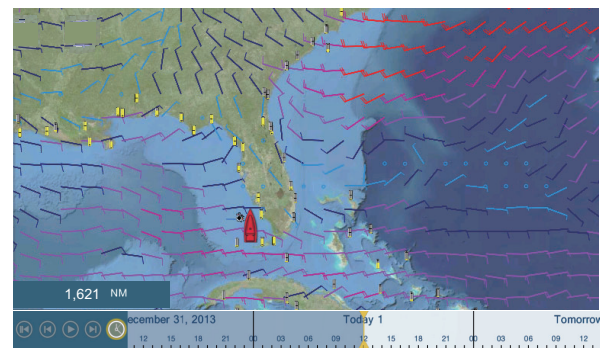
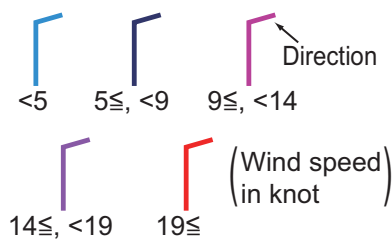


11.5 Weather Data (NavCenter or Sirius)

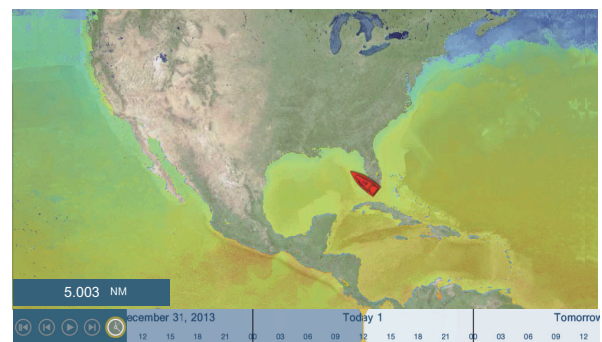
The table below shows the weather data available for displaying according to weather data server (NavCenter or Sirius).

Items	NavCenter	Sirius	Item	NavCenter	Sirius
Wind	Yes	Yes	Currents	Yes	No
Waves	Yes	Yes	Altimetry	Yes	No
SST	Yes	Yes	Plankton	Yes	No
Cloud	Yes	No	Buoys	No	Yes
Rain	Yes	No	City	No	Yes
Pressure	Yes	Yes	Storm	No	Yes
500mb	Yes	No	Lightning	No	Yes
Air Temp	Yes	No	Storm Tracks	No	Yes

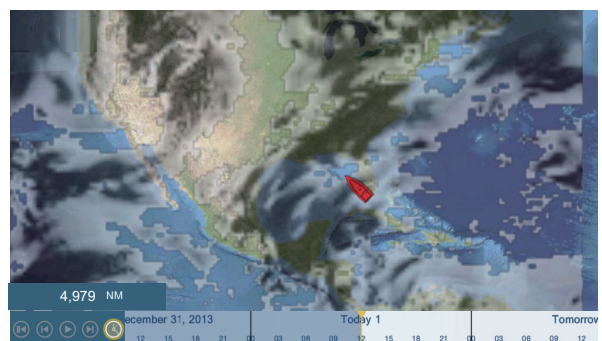
[Wind]: The wind forecast displays the wind speed by color. The bar at the top points in the wind direction.



[Waves]: The waves forecast displays wave height with color. 0 foot (minimum) is displayed in light blue, 35 feet (maximum) in red.

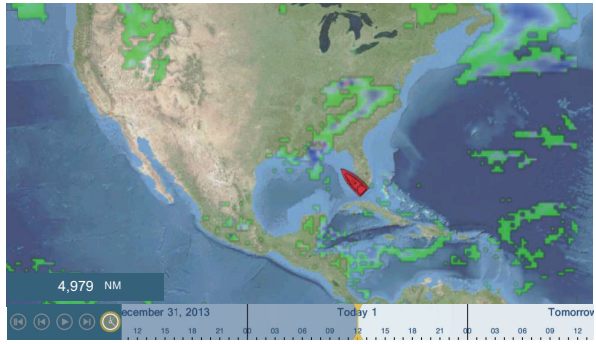


[Cloud]: The cloud forecast displays cloud images. 8% of cloud amount (minimum) is displayed in white, 100% (maximum) in black. The cloud amount under 8% is transparent.

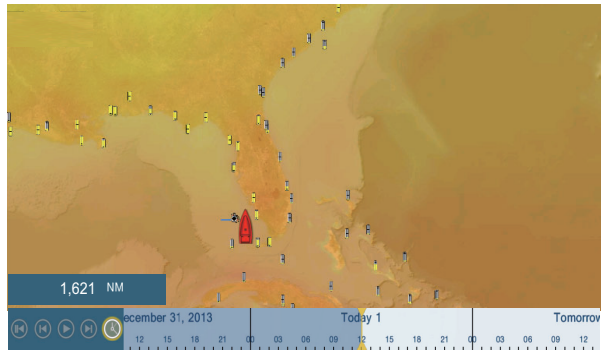


11. WEATHER

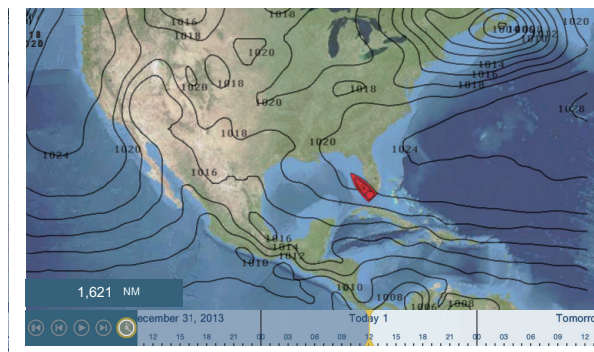
[Rain/Snow]: The rain/snow forecast displays rain/snow images. 0.1 mm/hour of rainfall/snowfall (minimum) is displayed in green, 5 mm/hour (maximum) in dark violet.







[Air Temp]: The air temp forecast displays the air temperature by color. -45°C (-49°F) (minimum) is displayed in dark violet, 45°C (113°F) (maximum) is displayed in red.

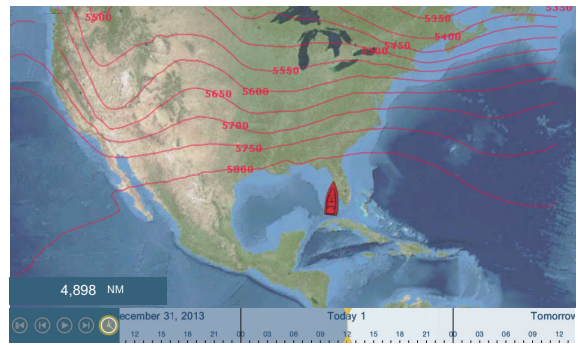


[Pressure]: The pressure forecast displays surface pressure.

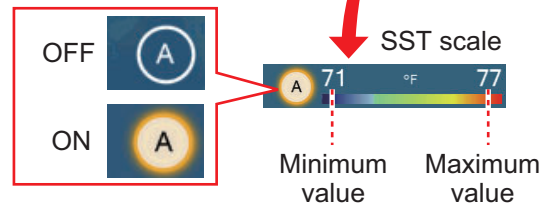
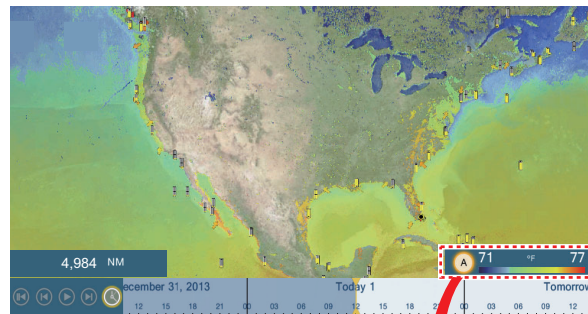


Pressure icon	Meaning
	Trough
	Squall line
	Dry line
	Isobars

[500mb]: The 500mb forecast displays the contour lines over 500 mb.



[SST] (Sea surface temperature): This data layer shows the temperature of the sea surface in shades. Lower temperatures are in dark blue, higher in red. On the screen, you can turn on or off the automatic SST scale with tapping [A]. Set the minimum or maximum value for which to show SST. See page 3-5 for how to set the value. This is available when [Auto] is off.



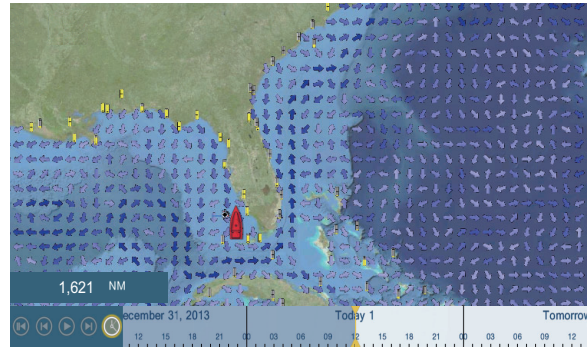
You can turn the automatic SST scale adjustment on or off by tapping the “A”.

OFF: SST can be adjusted manually, with the range sliders.

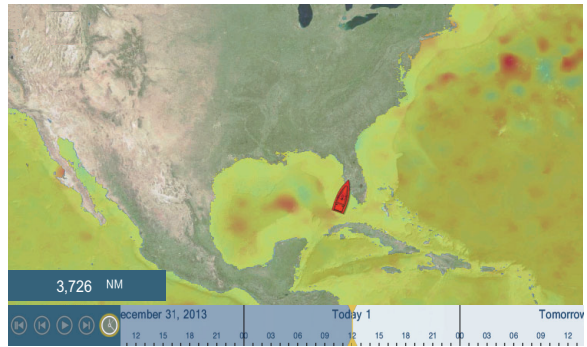
ON: SST set according to the depth shading selection set in the menu.

11. WEATHER

[Currents]: The current forecast displays the tidal current speed and direction by blue arrow. The darker the blue, the faster the current speed (0 to 2 kn).



[Altimetry]: The altimetry forecast displays the sea height anomalies by color. The large anomalies are displayed in red, smaller ones in light green.



[Plankton]: The plankton forecast displays the plankton growth in tones of green. The darker the green, the greater the density of plankton.

12. AIS, DSC MESSAGE

12.1 What is AIS?

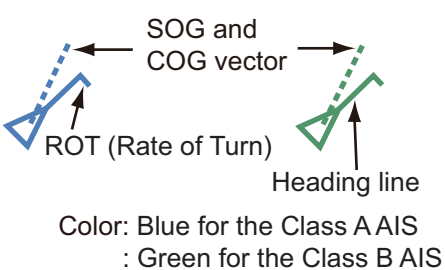

AIS (Automatic Identification System) is a system that continuously transmits the identification and position of your ship to AIS-equipped ships within VHF range. All such ships also receive data from other AIS-equipped ships and display their positions and other relevant information. The AIS broadcasts this information over a VHF transceiver. Data include:

- Position
- Name of ship
- Course over ground
- Position of position-fixing equipment
- Heading
- Call sign
- Speed over ground
- Name of position-fixing equipment
- Rate of turn



12.2 How to Show or Hide the AIS Symbols

1. On the radar display or plotter display, open the [Layers] menu.
2. Turn [AIS Targets] on or off as required.





12.3 AIS Target Symbols

Target type	Symbol	Description
Activated AIS target	 <p>Color: Blue for the Class A AIS : Green for the Class B AIS</p>	COG is indicated on the symbol with a dotted line.
Dangerous AIS target	<p>Color: Red</p> 	The target whose values for both CPA and TCPA are smaller than [CPA Alarm Value] and [TCPA Alarm Value], which are set in the [Settings] - [Targets] menu, is indicated as a dangerous target.

12. AIS, DSC MESSAGE

Target type	Symbol	Description
Lost AIS target	 <p>Color - AIS target: Blue for the Class A AIS : Green for the Class B AIS - Cross: Red</p>	<p>An AIS target becomes a lost target if a signal is not received from the AIS target for x* minutes. The lost target symbol is erased if a signal is not received for an additional x* minutes.</p> <p>*: The time depends on the AIS transponder. Check the operator's manual for your AIS transponder for information about lost targets.</p>
No CPA/TCPA target	 <p>Color: Blue for the Class A AIS : Green for the Class B AIS</p>	<p>AIS symbols are shown in a broken lines in the following cases:</p> <ul style="list-style-type: none"> • No water or ground tracking speed of your ship, or there is no speed data. All AIS symbols are shown in broken lines. • No speed data from AIS target. The symbol of the corresponding AIS target is shown in broken lines. A target with neither a reported heading nor COG is oriented toward the top of the operational display area.

Other AIS symbols that may appear are shown in the table below.

Symbol	Meaning
	AtoN
	Base Station
	Aircraft
	SART

12.4 Proximity AIS Target Alarm

The proximity AIS target alarm alerts you when an AIS target is within the distance you specify. When an AIS target is within the distance set, the alarm indication "Proximity AIS Alarm" flashes in the status bar and the audio alarm sounds. (See paragraph 2.11.7).

1. Open the home screen, then tap [Settings] - [Targets].
2. Turn on [Proximity AIS Target Alarm].
3. Tap [Proximity AIS Target Alarm Value] to open the software keyboard.
4. Set the alarm value, then tap ✓.
5. Tap the close button to finish.

12.5 How to Ignore Slow Moving AIS Targets

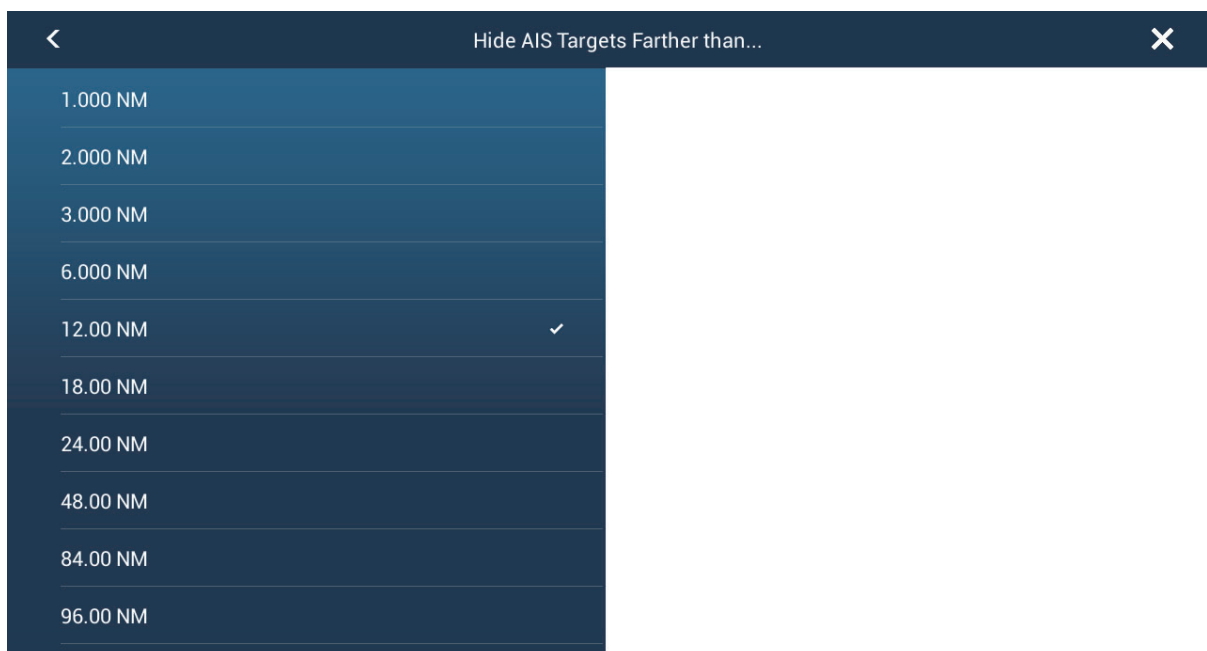
The proximity AIS target alarm may often sound in areas of heavy vessel traffic. You can prevent frequent release of the alarm against slow, non-threatening targets by specifying the maximum target speed that triggers the alarm. Any target whose speed is lower than set here does not trigger the alarm.

1. Open the home screen, then tap [Settings] - [Targets].
2. Tap [Ignore Alarms for AIS Slower than...] to open the software keyboard.
3. Set a speed, then tap ✓. The setting range is 0.0 - 9.9 (knots).
4. Tap the close button to finish.

12.6 How to Hide AIS Targets

You can hide the AIS symbols that are beyond the distance you set here.

1. Open the home screen, then tap [Settings] - [Targets].
2. Tap [Hide AIS Targets Farther than...].



12. AIS, DSC MESSAGE


3. Tap a distance. Targets at a distance greater than selected here are not shown on the screen.
4. Tap the close button to finish.

12.7 How to Display AIS Target Data

Tap an AIS target to display the simple information. To get detailed information, tap the target (plotter or radar display) then tap [Info] on the pop-up menu.

Name	FURUNO
MMSI	124365890
COG	0.0°
SOG	0.0 kn
Range	7.293 NM
Bearing	325.2°
CPA	5.992 NM
TCPA	-41'30s
Last Update	30'42s
GoTo	
New Point	
Info	

Simple information

Target Info		✕
TARGET INFO		
NickName		
Name	FURUNO	
MMSI	124365890	
Call Sign	ZA1B2	
COG	0.0 °	
SOG	0.0 kn	
CPA	5.992 NM	
TCPA	-41'30s	
Range	7.293 NM	
Bearing	325.2 °	
Destination		
Vessel Type	HSC - No additional information	
Vessel Status	Moored	

Detailed information

12.8 How to Show or Hide the Target IDs

You can show or hide the target ID of AIS targets.

1. Open the home screen, then tap [Settings] - [Targets].
2. Turn [Display Target IDs] on or off as required.
3. Tap the close button to finish.

12.9 AIS List

How to open the AIS list

1. Open the home screen, then tap [List] and [AIS].

AIS			Name	Range	CPA	Refresh	×
A							
Name/MMSI	Range/Bearing	CPA/TCPA					
AMBITIOUS 387650980	51.95 NM 294 °	19.30 NM -57'56s					>
Name/MMSI	Range/Bearing	CPA/TCPA					
APPARATION 836705890	52.97 NM 274 °	1.987 NM -1h03'					>
Name/MMSI	Range/Bearing	CPA/TCPA					
AQUAFARER 836705890	55.49 NM 275 °	3.360 NM -1h06'					>
B							
Name/MMSI	Range/Bearing	CPA/TCPA					
BOHEMIAN 180092461	55.55 NM 275 °	3.385 NM -1h06'					>
Name/MMSI	Range/Bearing	CPA/TCPA					
BUTTRESS 180092461	30.99 NM 282 °	6.066 NM -35'03s					>
C							

How to display the detailed information for an AIS target

- Tap the AIS target on the AIS list then tap [Detail].

FURUNO		×
TARGET INFO		
NickName		
Name	FURUNO	
MMSI	518111000	
Call Sign	E5U2061	
COG	0.0 °	
SOG	0.0 kn	
CPA	559 yd	
TCPA	-1h19'	
Range	7.957 NM	
Bearing	272 °	
Destination	MIAMI	
Vessel Type	Cargo ships - All ships of this type	
Vessel Status	At Anchor	

How to find an AIS target on the plotter display

Tap the AIS target on the AIS list, then tap [Find On Chart]. The plotter display opens and the selected AIS target is zoomed in.

How to edit an AIS nickname

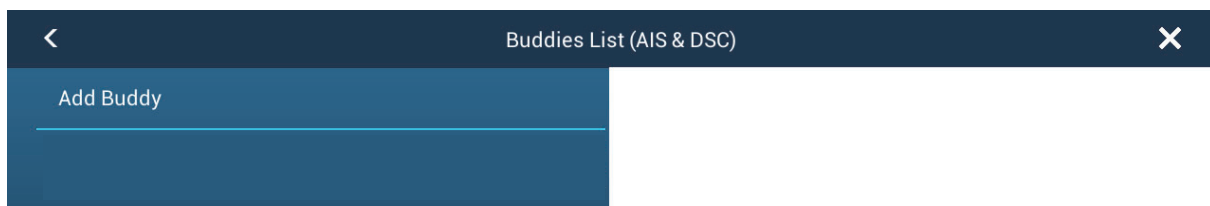
1. Tap the AIS target to edit its nickname.
2. Tap [Edit Nickname] to display the software keyboard.
3. Enter the nickname. You can use a maximum of 20 alphanumeric characters.
4. Tap ✓.
5. Tap the close button to finish.

12.10 How to Register an AIS or DSC Target to the Buddies List

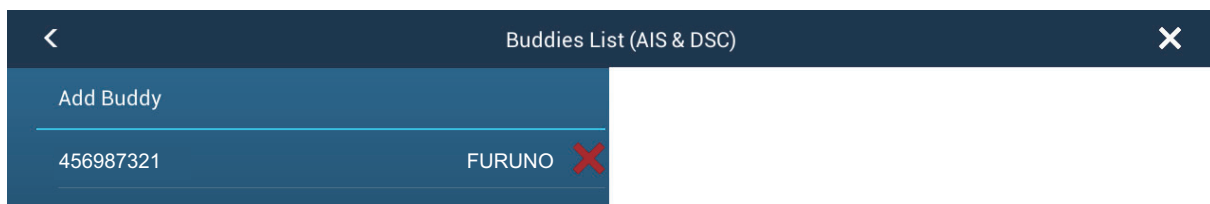
The buddies list provides a quick reference to ships' MMSI and nickname. For example, you might want to enter the MMSI and nickname of partner ships or ships that often operate in your area.

How to add an MMSI no. to the buddies list

1. Open the home screen, then tap [Settings] - [Targets].
2. Tap [Buddies List (AIS & DSC)].



3. Tap [Add Buddy] to open the numeric software keyboard.
4. Enter the MMSI number, then tap ✓.
5. Tap the MMSI number just entered to show the software keyboard.
6. Enter the nickname, then tap ✓.

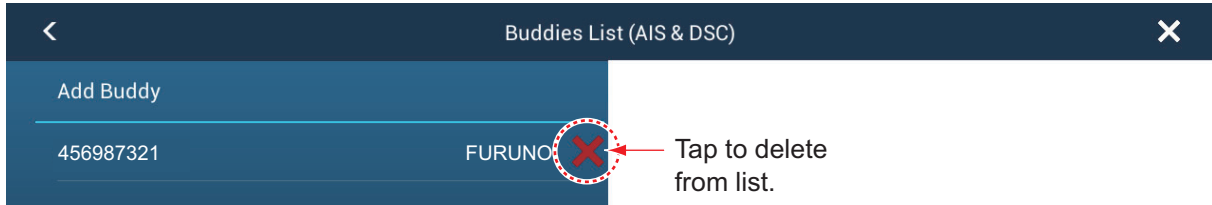


7. Tap the close button to finish.

How to delete an entry from the buddies list

1. Open the home screen, then tap [Settings] - [Targets].
2. Tap [Buddies List (AIS & DSC)].

3. Tap the red "X" (to the right of the nickname) of the buddy to delete.

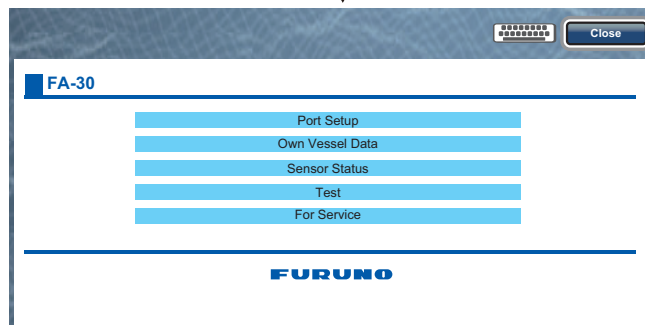
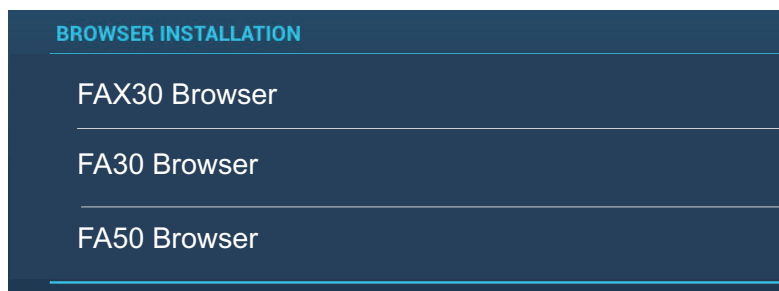


4. You are asked if you are sure to delete the buddy. Tap [OK].
5. Tap the close button to finish.

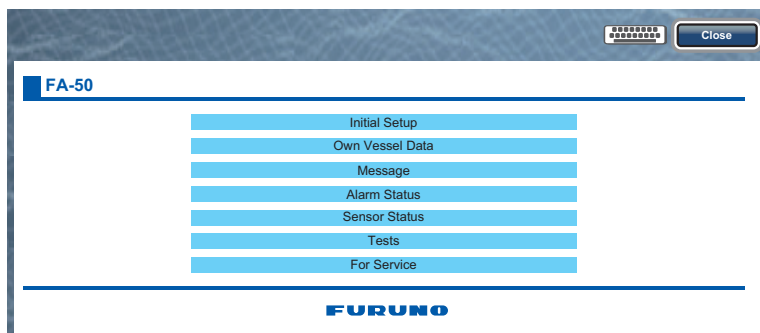
12.11 AIS Transponder FA-30, FA-50

The FURUNO AIS Transponder FA-30 (or FA-50) installs in the NavNet TZtouch2 network and can be controlled from a NavNet TZtouch2 display. To access the menu for the transponder, do as shown below. See the respective operator's manual for details.

1. Connect the FA-30 (or FA-50) to the NavNet TZtouch2 network.
2. Open the home screen, then tap [Settings] - [Initial Setup].
3. Tap [FA30 Browser] or [FA50 Browser].



OR



12.12 DSC Message Information

The DSC (Digital Selective Calling) message information feature provides, on the plotter and radar displays, the MMSI no. and position* of the ships that have transmitted a DSC message to you. A hexagon-shaped marker marks the position of the ship at the time the DSC was transmitted to you. The marker is color-coded according to the type of DSC message sent, red for distress and green for non-distress.

* Position at the time of message transmission. Position information is not updated.



This feature requires connection of a DSC capable radiotelephone that outputs the DSC sentence in NMEA 0183 format.

12.12.1 DSC message notification

When a DSC position report message is received, the message "DSC Position Report Received" appears in yellow on the status bar at the top of the screen (see paragraph 2.11.7). To delete the message, tap the status bar.

When a DSC distress message is received, the message "DSC Distress Call Received" appears in red on the status bar at the top of the screen. To delete the distress message, tap the status bar.

12.12.2 How to go to a DSC point

Tap the DSC marker to go then tap [Go To] on the pop-up menu.

12.12.3 How to display DSC information

Tap a DSC marker to display the simple information (position, MMSI no. of the ship that transmitted a DSC message, etc.). To get detailed information, tap a DSC marker, then tap [Info] on the pop-up menu.

MMSI	387654321
COG	0.0°
SOG	0.0 kn
Range	7.293 NM
Bearing	325.2°
CPA	5.992 NM
TCPA	-41'30s
Last Update	30'42s
GoTo	
New Point	
Info	

Simple information

Target Info		✕
NickName		
MMSI	387654321	
COG	0.0°	
SOG	0.0 kn	
CPA	5.992 NM	
TCPA	41'30s	
Range	7.293 NM	
Bearing	325.2°	
Last Update	30'56s	
Lat	N 34°36.000'	
Lon	E 135°12.000'	
Nature Of Distress	---	

Detailed information

12.12.4 The DSC list

When you receive a DSC message, the message is automatically saved to the DSC list. To help you quickly identify the DSC target on the plotter and radar displays, you can replace the MMSI no. indication with the name of your choice; for example, ship's name.

1. Open the home screen, then tap [List] - [DSC].



2. Tap [Name], [Range] or [CPA] at the top of the list to sort the list.

[Name]: DSC targets sorted in alphanumeric order.

[Range]: DSC targets sorted by range in ascending order.

[CPA]: DSC targets sorted by CPA in ascending order.

To see the detailed information for a DSC target, tap a DSC then tap [Detail].



To put a DSC marker at the center of the plotter display, tap the DSC target then tap [Find On Chart].

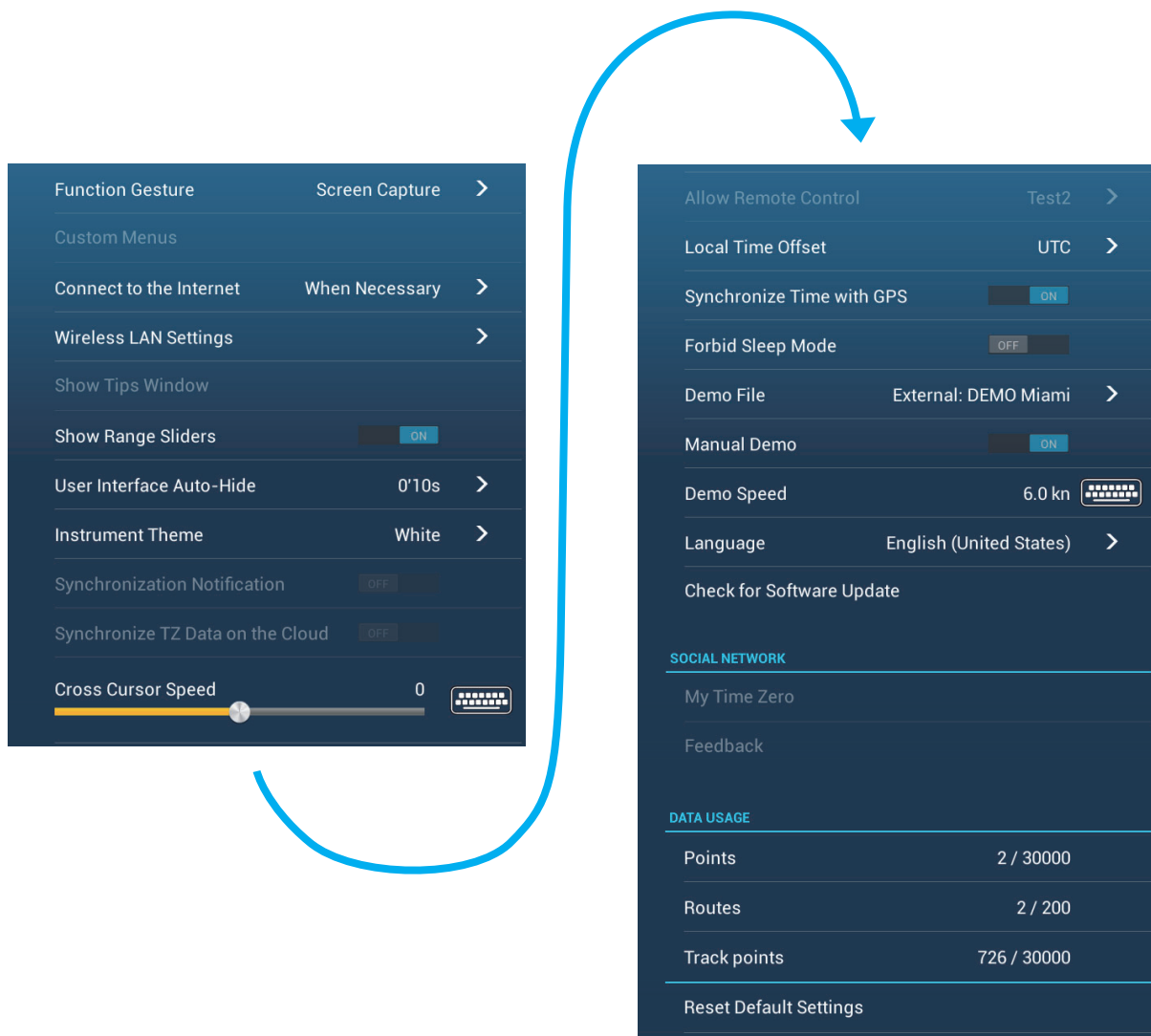
13. OTHER FUNCTIONS

Once you have become acquainted with your equipment, you can set it according to your needs. You can change system configuration, change how the equipment operates and displays information, etc.

The descriptions contained in this section are those not previously mentioned.

13.1 General Menu

The [General] menu contains items that once preset do not require frequent adjustment.



13. OTHER FUNCTIONS

[General] menu description

Menu item	Function	Options
[Show Range Sliders]	Show or hide the range sliders, which appear at the right or left edge of the screen depending on the display mode.	[ON], [OFF]
[User Interface Auto-Hide]	Select the time to wait before closing a pop-up menu when no operation is found.	[2 s], [3 s], [5 s], [10 s], [15 s]
[Local Time Off-set]	Select the time difference between local time and UTC time.	UTC -12:00 to UTC + 13:00 (at one-hour intervals)
[Synchronize Time with GPS]	Activate or deactivate synchronizing time with GPS.	[ON], [OFF]
[Cross Cursor Speed]	Adjust the cross cursor speed.	-7 to +7
[Demo File]	Select the demo file to use with the demo mode.	
[Manual Demo]	Enable or disable the demo mode.	[ON], [OFF]
[Demo Speed]	Set the ship's speed to use in the demo mode.	0 to 20 kn
[Check for Software Update]	Update the software version. See section 13.5.	-
[Reset Default Settings]	Restore default settings for the [General] menu.	-

*: In the demo displays, you can move the position for the boat icon to the position tapped. Tap the screen to open the pop-up menu then tap [Move Boat].

13.2 Units Menu

The [Units] menu sets the unit of measurement for speed, distance, depth, etc.



Menu item	Options
[Bearing Display]	[Magnetic], [True] The mode (magnetic or true) of all heading and bearing data.
[True Wind Calculation Reference]	[Ground], [Surface] Select wind value to display from speed over ground or speed through water (surface).
[Position Format]	[DDD°MM.mmmmm'], [DDD°MM.mmm'], [DDD°MM.mm'], [DDD°MM'SS.ss"], [DDD.dddddd°]
[Short/Long Change Over]	Set the distance at which to change between short and long range. Set the long range here (0.0 to 2.0 NM)
[Range (Long)]	[Nautical Mile], [Kilometer], [Mile]
[Range (Short)]	[Foot], [Meter], [Yard]
[Depth]	[Foot], [Meter], [Fathom], [Passi Braza]
[Height/Length]	[Foot], [Meter]
[Temperature]	[Fahrenheit Degree], [Celsius Degree]
[Boat Speed]	[Knot], [Kilometer per Hour], [Mile per Hour], [Meter per Second]
[Wind Speed]	[Knot], [Kilometer per Hour], [Mile per Hour], [Meter per Second]
[Atmospheric Pressure]	[HectoPascal], [Millibar], [Millimeter of Mercury], [Inch of Mercury]
[Oil Pressure]	[KiloPascal], [Bar], [Pound per Square Inch]
[Volume]	[Gallon] (Gallon & Gallon/Hour), [Litre] (Litre & Litre/Hour)
[Reset Default Settings]	Restore default settings for the [Units] menu.

13.3 Initial Setup Menu

The [Initial Setup] menu, which is mainly for use by the installer of the equipment, sets up the system according to the sensors connected. These adjustments require some knowledge of marine electronics equipment. If you are unsure of your abilities, have a qualified marine electronics technician make the adjustments. Inadequate adjustment can affect performance.

GPS POSITION section, other items

Menu item	Description	Options (setting range)
[Longitudinal (from bow)]	Enter the GPS antenna positioning bow-stern (Longitudinal) and port-starboard (Lateral) position from the origin.	0 m to 999 m
[Lateral GPS Position (-Port)]		-99 m to +9 m



Menu item	Description	Options (setting range)
[Boat Length]	Set the length of your boat.	0 m to 999 m
[Size of Static Icon]	Set the size of static (such as own ship) icons.	50 to 150
[Depth Display]	Select the start point for depth measurement.	[Under Keel], [Under Sea Level]
[Transducer Draft]	Set the transducer draft.	0.0 m to 99.9 m
[Keel Draft]	Set the keel draft.	0.0 m to 99.9 m
[Graphic Instruments Setup]	Set Min/Max Boat Speed, Min/Max Depth, Min/Max Sea Surface Temperature, Engine(x2) (Max. RPM, Oil Pressure, Temperature), Reset Instrument Pages, Reset Default Settings.	

DATA ACQUISITION section

Menu Item	Description	Options (setting range)
[GP330B WAAS Mode]	Select [ON] to use the WAAS mode for the corresponding GPS antenna.	[ON], [OFF]
[WS200 WAAS Mode]		
[Data Source]	Select the source for each data to input to the system. If two or more sources are connected for a data, select one using the pull-down dialog box. The FURUNO products are shown at the upper part of the list.	
[Sensor List]	Show the information for sensors connected to your equipment. Also, you can set "Nickname" for them here.	
[NMEA0183 Output]	Select [ON] to output NMEA sentences.	
[NMEA 2000 PGN Output]	Select [ON] for the PGN's (Parameter Group Number, CAN bus (NMEA2000) message) to output from the CAN bus port.	
[Sky View]	Show the condition of GPS and GEO (WAAS) satellites. The bearing and elevation angle of all GPS and GEO satellites (if applicable) in view of your receiver appear. For the service technician.	

INTERNAL GPS SETUP section

Menu Item	Description
[WAAS Mode]	Set to [OFF] when using external GPS.

SC-30 SETUP section

Menu item	Description	Options (setting range)
[WAAS Mode]	Select [ON] to use the WAAS mode.	[ON], [OFF]
[Heading Offset]	Enter the offset value for heading.	-180° to +180°
[Pitch Offset]	Enter the offset value for pitching.	-90° to +90°
[Roll Offset]	Enter the offset value for rolling.	-90° to +90°

CALIBRATION section

Menu item	Description	Options (setting range)
[Heading]	Offset heading data.	-180.0° to +180.0°
[Speed Through Water]	Calibrate speed data. Enter amount in percentage.	-50% to +50%
[Wind Speed]	Offset wind speed data. Enter amount in percentage.	-50% to ;50%
[Wind Angle]	Offset wind angle data.	-180° to +180°
[Sea Surface Temperature]	Offset sea surface temperature data.	-10°C to +10°C

DATA DAMPING section

Menu item	Description	Options (setting range)
[COG & SOG]	Set data damping time. The lower the setting the faster the response to change.	0 to 59 seconds
[Heading]		
[Speed Through Water]		
[Wind Speed & Angle]		
[Rate of Turn]		

FUSION section

Menu item	Description	Options (setting range)
[Connect to Fusion]	Connect to your Fusion equipment.	
[Fusion Auto Volume]	Set to [ON] to allow this unit to control the Fusion volume.	
[Minimum Speed]	Set the minimum speed threshold. Exceeding this speed activates volume auto control.	0.0 kn to 19.9 kn
[Maximum Speed]	Set the maximum speed threshold.	0.1 kn to 99.0 kn
[Volume Increase]	Set the amount of extra volume to output.	10% to +50%

BROWSER INSTALLATION section

Menu item	Description	Option (setting range)
[FAX30 Browser]	Show the Facsimile Receiver FAX-30 display.	
[FA30 Browser]	Show the AIS Receiver FA-30 display.	
[FA50 Browser]	Show the AIS Receiver FA-50 display.	

13. OTHER FUNCTIONS

Other items

Menu item	Description	Option (setting range)
[Chart Master Device]	Set to ON to set this equipment as the chart master and share one System ID and chart unlock code in the network.	
[System ID]	The system ID for this device within the network.	
[IP Address]	IP address for this unit within the network.	
[Quick Self Test]	Test the equipment.	
[ServiceMan]	Requires login password. For the serviceman.	
[Event/Buzzer Port Configuration]	Select from [Event Input] or [Buzzer Input] to configure information sent to the port.	
[Event Input Configuration]	Select what data is input as an event.	
[Update Network Equipments]	Update the list of equipment connected to the same network as this unit.	
[Reset Default Settings]	Reset the system to default settings.	

[GRAPHIC INSTRUMENTS SETUP]

Menu Item	Description	Options (setting range)
Maximum Boat Speed	Set the transducer's maximum detectable speed	[1 kn] to [99 kn]
Maximum Wind Speed	Set the transducer's maximum detectable speed	[1 kn] to [99 kn]

[GRAPHIC INSTRUMENTS SETUP] - [Depth]

Menu Item	Description	Options (setting range)
Minimum Depth	Set the transducer's minimum detectable depth	[1 m] to [19 m]
Maximum Depth	Set the transducer's maximum detectable depth	[20 m] to [2000 m]

[GRAPHIC INSTRUMENTS SETUP] - [Sea Surface Temperature]

Menu Item	Description	Options (setting range)
Minimum SST	Set the transducer's minimum detectable temperature	[0.00°C] to [98.99°C]
Maximum SST	Set the transducer's maximum detectable temperature	[0.01°C] to [99.99°C]

[GRAPHIC INSTRUMENTS SETUP] - [Propulsion Engine]

Menu Item	Description	Options (setting range)
[Max. RPM]	Set the maximum rpm of your engine to show on the RPM display.	[1 rpm] to [20,000 rpm]
[Red Zone Oil Pressure]	Set the starting value for the red zone area of the oil pressure meter.	[0 psi] to [59 kPa]
Max. Oil Pressure	Set the maximum oil pressure of your engine.	[60 psi] to [144 psi]
Min. Temperature	Set the minimum temperature for your engine.	[0.00°C] to [99.00°C]
[Red Zone Temperature]	Set the starting value for the red zone area of the engine temperature indicator.	[0.01°C] to [999.00°C]

[GRAPHIC INSTRUMENTS SETUP] - [Other Engine]

Menu Item	Description	Options (setting range)
[Max. RPM]	Set the maximum rpm of your engine to show on the RPM display.	[0 rpm] to [20,000 rpm]
[Red Zone Oil Pressure]	Set the starting value for the red zone area of the oil pressure meter.	[0 kPa] to [999 kPa]
Max. Oil Pressure	Set the maximum oil pressure of your engine.	[0 kPa] to [999 kPa]
Min. Temperature	Set the minimum temperature for your engine.	[0°C] to [99°C]
[Red Zone Temperature]	Set the starting value for the red zone area of the engine temperature indicator.	[0°C] to [999°C]
Reset Instrument Pages	Resets all instrument pages to default.	[OK], [Cancel]

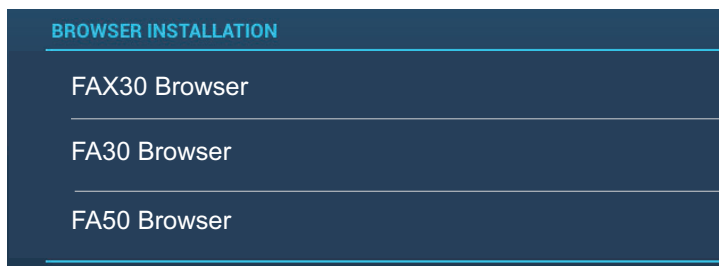
ENGINE & TANK SETUP

Menu Item	Description	Options (setting range)
[Nickname]	Change the nickname for the engine or tank.	
[Used For Propulsion]	Select which engine/tank is used to calculate the distance which may be traveled using the remaining fuel. [ON] uses the engine/tank for calculations, [OFF] ignores the engine/tank.	[ON], [OFF]
[Reset]	Resets the engine/tank details to default	[OK], [Cancel]

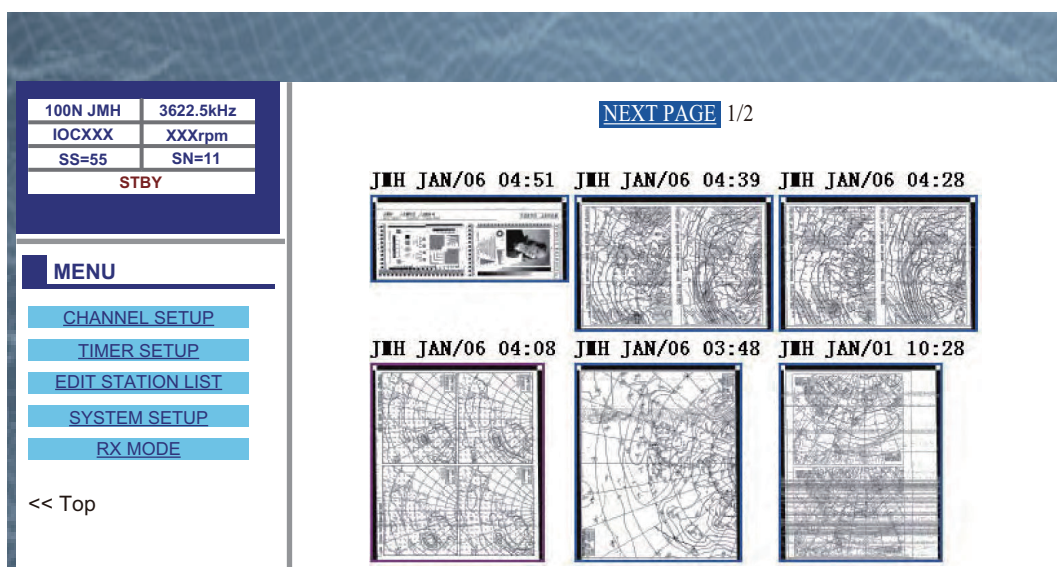
13.4 Facsimile Receiver FAX-30

The FURUNO Facsimile Receiver FAX-30 installs in the NavNet TZtouch2 network and can be controlled from a NavNet TZtouch2 display. Below are the steps to start fax operation.

1. Connect the FAX-30 to the NavNet TZtouch2 network.
2. Open the home screen, then tap [Settings] - [Initial Setup].
3. Tap [FAX30 Browser].



4. Tap [WX FAX] or [NAVTEX].



5. Refer to the Operator's Manual of the FAX-30 for operation information.

The FAX-30 display can only be accessed by one NavNet TZtouch2 unit at a time. When another NavNet TZtouch2 display accesses the FAX-30, control of the FAX-30 is given to that display after the picture has stopped completely. This sequence takes approximately one minute.