



fusion sport

***smart*speedTM**

USER GUIDE

Table of Contents

System Overview	5
Introduction	5
System Components	5
Your IPAQ Pocket PC	5
“Sportsweb” Base Station	6
Reactive Data Units	6
Tripods	6
Charger Unit	6
Software CD	6
Quick Start Guide	7
Tripods and Units	7
Aligning gates	8
PDA set up	8
Protocol Set Up	9
Protocol Run	13
Software Overview	14
Viewing and Saving data	14
To Save	15
Data on Computer	16
Adding New Team	16
Adding New Players	18
Alternative Entry Method (Importation of players)	19
Pacing Protocol	20
Edit Team Name	21
Edit Player Name	23
Deleting Team(s)	24
Deleting Player(s)	25
New Protocol	26
Software Installation	Error! Bookmark not defined.
Functional Overview	Error! Bookmark not defined.
Applications: Lap Mode	Error! Bookmark not defined.
Defensive Agility Drill	Error! Bookmark not defined.
4 Gate Lap Drill	Error! Bookmark not defined.
Applications: Straight Lane Mode	Error! Bookmark not defined.
Standing 40m Sprint	Error! Bookmark not defined.
Standing 20m Sprint	Error! Bookmark not defined.
Modified Phosphate Decrement Test	Error! Bookmark not defined.
Applications: Tree Mode	Error! Bookmark not defined.
Tree Protocols	Error! Bookmark not defined.
Single Cut Tree Protocol	Error! Bookmark not defined.
Double Cut Tree Protocol	Error! Bookmark not defined.
Applications: Serpentine Mode	Error! Bookmark not defined.
Serpentine Protocols	Error! Bookmark not defined.
4 gate Serpentine Protocol	Error! Bookmark not defined.
Applications: Grid Mode	Error! Bookmark not defined.
Grid Protocols	Error! Bookmark not defined.
6 Point Grid	Error! Bookmark not defined.
4 Point Grid	Error! Bookmark not defined.
Applications: Pacing Protocol	Error! Bookmark not defined.

Pacing Protocol	Error! Bookmark not defined.
Health and Safety	Error! Bookmark not defined.
Exposure to Radio-Frequency Energy	Error! Bookmark not defined.
Precautions When Using Batteries	Error! Bookmark not defined.
Electronic Devices	Error! Bookmark not defined.
Appendix	Error! Bookmark not defined.
Care and Maintenance	Error! Bookmark not defined.
Glossary	Error! Bookmark not defined.
Trouble Shooting	Error! Bookmark not defined.

PART ONE

FCC STATEMENTS

This equipment has been tested and found to comply with the limits for a Class B digital device, pursuant to Part 15 of the FCC Rules. These limits are designed to provide reasonable protection against harmful interference in a residential installation. This equipment generates uses and can radiate radio frequency energy and, if not installed and used in accordance with the instructions, may cause harmful interference to radio communications. However, there is no guarantee that interference will not occur in a particular installation.

If this equipment does cause harmful interference to radio or television reception, which can be determined by turning the equipment off and on, the user is encouraged to try to correct the interference by one or more of the following measures: Re-orient or relocate the receiving antenna, Increase the separation between the equipment and receiver, Connect equipment and receiver to outlets on different circuits, or Consult the dealer or an experienced radio/TV technician for help.

US FCC Labeling Requirements (FCC Part 15.19)

This device complies with Part 15 of the FCC Rules. Operation is subject to the following two conditions: (1) this device may not cause harmful interference, and (2) this device must accept any interference received, including interference that may cause undesired operation.

US FCC Modification warning (FCC Part 15.21)

Warning: Any changes or modifications not expressly approved by Fusion Sport could void the user's authority to operate this equipment.

SYSTEM OVERVIEW

Introduction

SMARTSPEED is a revolutionary electronic coaching tool that will transform your training program.

SMARTSPEED's patented innovation gives you greater control over the training environment, and provides a new world of challenges and feedback for athletes.

System Components

Your 6 Gate SMARTSPEED kit contains –

- 1 IPAQ Pocket PC handheld computer (with Active sync cable and software)
- 1 Fusion Sport "Sportsweb" Base Station (with antenna)
- 6 Reactive Data Units
- 6 Reflector units
- 13 Tripods in Vinyl bag
- 1 Recharge unit (2 power boards with 7 AC adaptors)
- Pocket PC and Workstation software packages
- 1 PDA to "Sportsweb" base station cord
- 7 unit protector covers
- 1 Mobile tool chest

(NB. If you have purchased a system with more or less Reactive data units the number of reflectors, tripods, etc will change accordingly).

Your IPAQ Pocket PC

The IPAQ pocket PC offers many of the normal functions of a desktop computer in the palm of your hand. Your pocket computer comes pre-installed with the Smartspeed Pocket PC software, ready to be your assistant in the field.

WARNING – Potential Data Loss

Pocket PC technology requires application data to be stored in the computers “short term memory”. If your Pocket PC is allowed to discharge completely, you must recharge the unit within a given time period to prevent data loss. Failure to do so may erase any data, including the Smartspeed software, from your Pocket PC.

DO NOT leave your Pocket PC in the Smartspeed case for prolonged periods of time, as it will eventually become discharged and lose memory.

“Sportsweb” Base Station

The Sportsweb base station is the wireless centre point of the Smartspeed on-field network. The base unit is attached to either your Pocket PC or workstation computer to coordinate the delivery of information to and from the reactive data units.

Reactive Data Units

Fusion Sport’s Reactive Data Units are revolutionary to the sporting market. The combination of advanced wireless technology and intelligent on-board microcomputers provides the units with the ability to perform a wide range of functions.

Tripods

Fusion has specifically designed tripods for use in the sporting environment. These tripods will provide a stable platform for the reactive units and reflectors in a variety of terrains and weather conditions.

Charger Unit

The charger unit is designed for 240V AC and can charge up to 6 remote units plus the base station at any one time.

Software CD

The Smartspeed software CD contains both workstation and Pocket PC software packages.

QUICK START GUIDE

Prior to assembling and using your SMARTSPEED system, you should ensure that all Reactive Data Units, the Sportsweb Base Unit and the Pocket PC are completely charged. For charging instructions, refer to the maintenance section of this guide.

Tripods and Units

1. Remove the tripod from the bag. Adjust the height of the tripod using the adjustable sections. To adjust a section twist the upper half of the black section in a counter-clockwise direction, and adjust the height.
2. Once the tripod has been set at the desired height, twist the black section in a clockwise direction to secure the height.
3. Once the tripod is free standing, remove a **Reactive Data Unit** from the case and mount on the tripod using the quick release attachment. This attachment should fasten easily – if not, do not attempt to force it into place.
4. Repeat this procedure for as many Reactive Data Units as needed.
5. Now place the same number of reflectors as **Reactive Data Units** onto tripods using the quick release attachment. This attachment should fasten easily – if not, do not attempt to force it into place.
6. Remove the “Sportsweb” Base Unit from the case and attach onto a tripod using the quick release attachment. This attachment should fasten easily – if not, do not attempt to force it into place.
7. Attach the Antenna to the top of “Sportsweb” Base Unit by rotating it until it is secure.
8. Turn on the “Sportsweb” Base Unit by flicking the switch at the bottom of the unit which will cause a green LED to turn on.

Aligning gates

1. Place a reflector and Reactive Data Unit approximately 2m apart.
2. The photocell should be facing the reflector (see diagram 2 for photocell)
3. The Alignment LED will turn red when aligned.
4. A high pitched noise will emit from the Reactive Data Unit if not aligned.
5. This will be your first gate.
6. Repeat this for as many gates as needed.
7. Once all units are in place, turned on and aligned, the system is ready for use.

PDA set up

1. If the PDA screen is blank (in sleep mode) push the button located on the top right hand corner of the PDA.
2. Check the icon located in the bottom right hand corner of the desktop is activated. Press once the icon in the corner and select the top pop up line to activate the “Bluetooth on”.
3. With your PDA pencil, touch once the icon in the top left hand corner named Start.



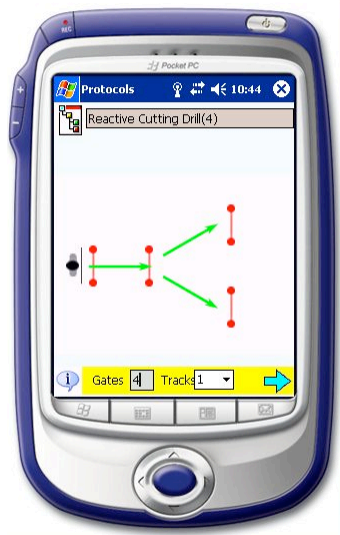
4. From the drop down box, touch once on the icon named Programs.
5. Touch once the folder located at the bottom of the page named Smartspeed

Protocol Set Up

1. To activate the Zigbee sleeve, insert your PDA into the cradle and push down gently. Touch the Zigbee icon once in the middle of the screen which will connect your PDA to the Zigbee sleeve. A red LED located in the bottom right hand corner will flash to show you it is connected and ready to use).
2. Touch once the icon located in the centre of the screen named New Session
3. Once on the Select Protocol page, you can select the particular protocol by touching once the down arrow on the bar below the icon named protocol. The Select Protocol page allows you to choose the desired protocol, the number of tracks (lanes) that you would like to use, and displays the generic set up for the selected drill.



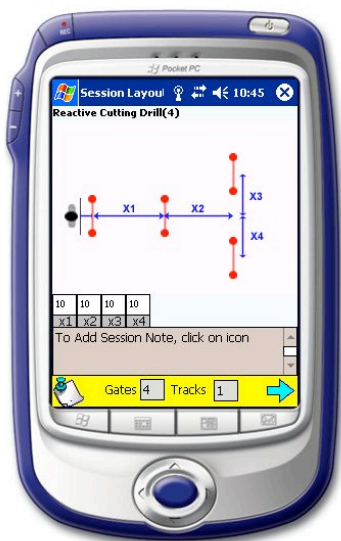
4. Then select the number of tracks you want to use by touching the down arrow next to the word Tracks. For most reactive protocols, only one track should be used for effective system speed.



5. Tapping the “i” icon will provide the user with a basic description of instructions for the drill selected



6. The session layout screen allows you to make notes on the layout and instructions for the protocol. Once you are ready to proceed click the arrow on the bottom right to proceed to the “Sync Field Units” page.



7. Touch the light bulb icon. All the gates that are switched on and functioning will flash to signal communications. If one or more units do not flash see the **“Protocol Set-Up”** section in the trouble shooting guide.
8. Then once the lights have flashed press **Synchronize**.



9. If the system is ready to proceed synchronization must be successful. If the Synchronization is not successful, refer to the **“Protocol Set-Up”** section in the trouble shooting guide.
10. After the synchronization, you may want to check battery status by tapping the icon in the top right hand corner. Click ok to return to the synchronization screen.
11. Both bars on the top of the screen will be green.
12. Touch once the icon in the top right hand corner named **OK**.

13. To proceed with the setup, tap the “Test Track” button once. This step requires you to walk through each gate in order to program the role of each unit. Follow the diagram from point A to B and press once, when finished. Once the page Track 1 has appeared walk between the reflector and the **Reactive Data Unit**. A beeping noise will occur which signifies that the beam has been broken.
14. Once this has been completed touch once the icon located in the right bottom corner named **Done**.
15. If the Test Track stage is unsuccessful refer to the “**Protocol Set-Up**” and “**Protocol Running**” section in the trouble shooting guide.
16. Repeat the test track procedure for each track for the given protocol.
17. Once the test tracks have been completed, press the arrow to proceed to the **Select Players page**.



18. On the next screen touch once the bar located below Team, which has an icon located at the far right hand section pointing Down.
19. Select the team you wish to use by touching once the team name from the drop down bar.
20. Once you have selected your team you may deselect certain players from that particular team by touching their names. To reselect that player press that person once again.
21. Having selected the players to be used in the drill touch once the icon in the bottom right hand corner that is an Arrow.
22. Touch once the icon located centre right at the bottom that is named Ready.
23. Touch once the icon located at the bottom right that is named Go.

Protocol Run

1. Before you press the go button you must first select the mode in which you want to run the protocol.
2. There are three choices Auto, Manual and Freestyle. Auto mode runs your players through with no changes available to the line up. Manual mode allows you to skip forward, and ignore players. Freestyle mode continuously runs with no data being recorded to the database.
3. Once the “Go” icon has been touched the protocol previously selected is up and running. The Reactive Data Unit(s) will flash and then the set of green LED’s will turn on (as in a traffic light start... go when ready)
4. On completion of the protocol the Reactive Data Unit(s) will flash their red LED’s 3 times followed by the pop up of the data for all players in a spreadsheet format.
5. Once you have finished looking at the data touch once the icon located in the top right hand corner named OK.
6. To exit out of the protocol touch once the icon located in the top right hand corner named OK.
7. To select different players for the same drill just completed select them in the manner described above and touch once the icon in the bottom right hand corner that is an Arrow.
8. If, however you wish to pick a new drill touch once the icon located in the top right hand corner named OK. Do this again in the next page.
9. Pick another drill using the same method as mentioned in Protocol Set Up.
10. If, however you are finished with Smartspeed™ then touch once the icon located in the top right hand corner named OK.
11. To exit file explorer touch once the icon located in the top right hand corner named X.

N.B. Protocols have individual description in the “**Protocol Overview**” section

SOFTWARE OVERVIEW

Viewing and saving data

1. On the opening Smartspeed page touch once the icon located on the bottom of the screen called View.
2. On the pop up box that occurs, touch once the button called Results.



3. On the next screen select the Protocol results you wish to view by touching the particular drill.
4. Then select the team you wish to view by touching once on the bar located below team. Then touch once the team you wish to view.



5. Then select the session you wish to view by touching once the date and time of the session in the box located below Sessions.
6. The results will then be shown by name order (last name) with splits 0 and onwards following the name.
7. You can view the results by time by touching once the un-filled circle located next to the word Total.
8. To view the results by name order touch once the un-filled circle located next to the word Name.
9. To exit this particular set of results press once the icon located in the top right hand corner named OK.
10. To choose another protocol and/or team results follow the same procedure.
11. To exit the results page press once the icon located in the top right hand corner named OK.

To Save

1. Enter the results as above
2. Press once the icon located on the bottom left of the screen named "Save as XML" or "Save as CSV".
3. On the following screen type using the keyboard (or letter recognizer) the name you wish to call the file (e.g. 1st XI_40m session 1)
4. Then select the folder you wish to save the results to by touching once the drop down bar located next to the icon that is named Folder.