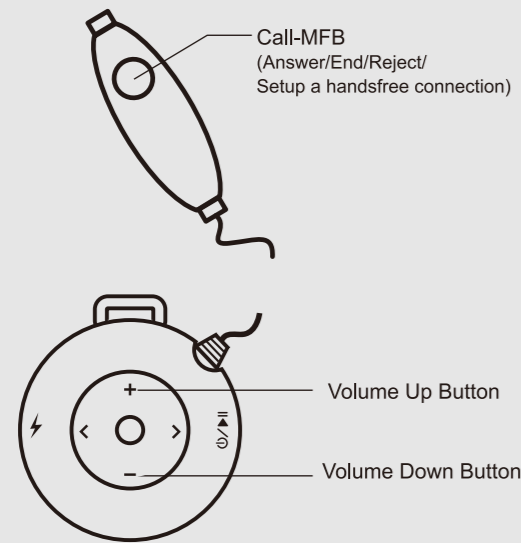


Introduction

Headset Features

Headset Call Controls



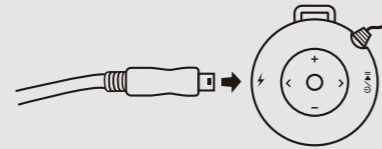
Charge

Charge

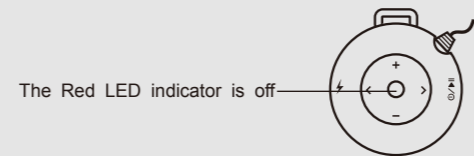
Before using your headset, read the Additional Information session in this user's guide.

Before you get started, charge your headset for 4 hours:

1. Plug the USB charging cable into your headset.



2. When charging is complete (The Red LED indicator is off), remove the charging adapter and detach the USB charging cable from your headset.



Listen music

1. If there is no AV connection between your headset and your Bluetooth music player. Press the Music-MFB to set up an AV connection with your Bluetooth music player.
2. Play the music on your Bluetooth music player.
3. If your headset and Bluetooth music player are successfully paired, you will hear the music on your headset.

Quick Tips

To power on your headset, press and hold the Music-MFB until the blue indicator flashes 2 times (about 3 seconds). After power on, your headset will connect to your last used phone automatically.

To power off your headset, press and hold the Music-MFB until the red indicator flashes 2 times (about 3 seconds).

To adjust the volume, press the Volume UP/Down Button when listening music or during a call.

To know the battery status, press the Music-MFB and Call-MFB at the same time when your headset is in standby mode. The red indicator flashes 5 times means the battery is full, 4 times means 4/5 full, 3 times means 3/5 full, 2 times means 2/5 full and 1 time means 1/5 full.

Note: Standby mode means your headset do not has an AV connection with your device and do not has a handsfree connection with your device (please refer to the LED indicator chart).

Headset Music Tips

1. To setup the AV connection with the last used Bluetooth Music player, press the Music-MFB when there is no AV connection between your headset and your last used Bluetooth music player.
2. To Play/Pause the music, press the Music-MFB when there is a AV connection between your headset and your Bluetooth music player.
3. To Stop the music, press the Music-MFB and Call-MFB at the same time when the music is playing.

LED indicator chart

| | |
|-----------------------|--|
| Power on | Blue indicator blinks twice |
| Power off | Red indicator blinks twice |
| Pairing mode | Red & Blue indicators blinks by turns |
| Reset | Purple indicator blinks twice and then Blue & Red indicators blinks by turns as pairing mode |
| Standby mode | Blue indicator blinks once every 4 seconds |
| Sniff mode | Blue indicator rapidly blinks twice every 4 seconds |
| Incoming call | Purple indicator blinks once per second |
| Talking/Playing music | Blue indicator rapidly blinks 3 times every 4 seconds |
| Charging | Red indicator light steady on |
| Charging complete | Red indicator off |
| Voice dial | Blue indicator blinks once per second |
| Mute | Red indicator blinks per second |
| Low battery | Red indicator rapidly blinks twice every 5 seconds |

For details about the advance functions and your headset

Additional information

Power supply

- Do not wear your headset when charging.
- Power supply must be connected to designated power sources as marked on the product.
- To reduce risk of damage to the electric cord, only remove it by grasping onto the AC adaptor rather than the cord itself from the outlet.
- Make sure the cord is well positioned to avoid potential damage.
- Before attempting to clean the AC power adapter, please unplug the unit from any power source to reduce risk of electric shock.
- The AC power adapter is designed for indoor use only, and must not be used outdoors

Emergency calls

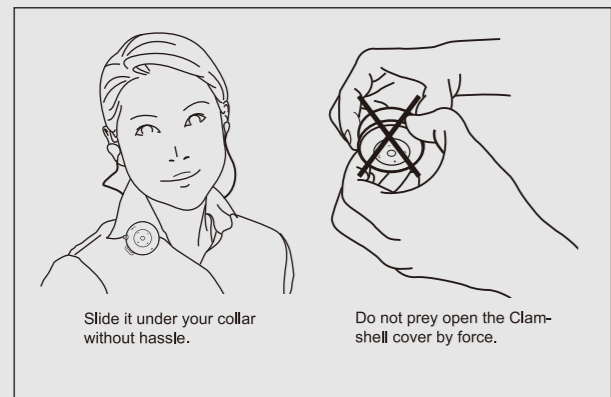
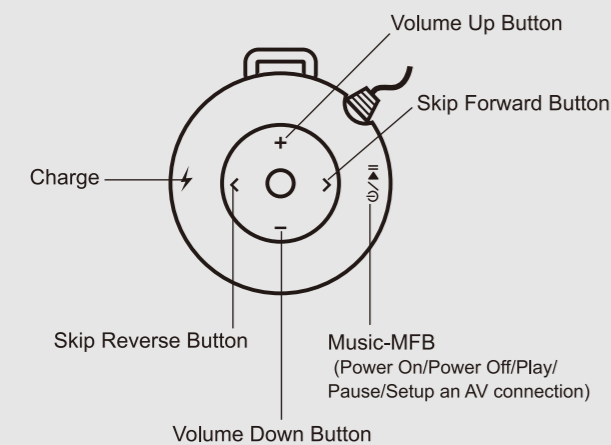
IMPORTANT!

You should never rely solely upon any electronic device for essential communications (e.g. 911 calls). Keep in mind that when making or receiving a call, your headset and the electronic device connected to must be switched on and in a service area with adequate cellular signal strength. Emergency calls can sometimes be disturbed on certain cellular phone networks or when certain network services and/or phone features are in use. Check with your local cellular service provider.

Battery information

- One new battery, or one that has not been used for a long period of time, could have reduced capacity the first few times it is used.
- Do not expose your headset in an environment temperature above +55°C (+131°C). If your headset is operated in cold temperatures, the battery capacity is reduced.
- The battery can only be charged in temperatures between +10°C (+55°C) and +45°C (+113°C)

Headset Music Controls



Pair

Before you can use your headset, you must pair it with your phone or Bluetooth music player.

Step A: Put your headset in Pairing Mode

Press and hold Music-MFB for 3 seconds to power on your headset. The first time your headset is turned on, it might automatically be ready for pairing. You can see the blue indicator and the red indicator cross blink per second.

Step B: Set your phone or Bluetooth music player to pair with your headset

1. Turn on the Bluetooth function of your phone.
2. Perform a "Bluetooth device discovery" from your phone.
3. Select your headset from the discovered devices list and confirm on screen prompts.
4. Enter the pincode "0000" and your headset will confirm to pair successfully with a pairing success melody.

Step C: Use and Test

Your headset and your phone or Bluetooth music player are paired and ready to make and receive calls or to listen music. To confirm they are successfully paired and operating properly. You can try following steps:

Make a call

1. If there is no handsfree connection between your headset and your phone. Press the Call-MFB to set up a handsfree connection with your phone.
2. Dial the number you want to call on your phone.
3. Press Send on your phone to make the call. If your phone and headset are successfully paired, you will hear ringing on your headset.

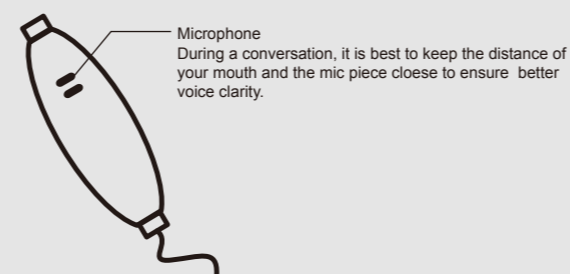
4. To the reverse song, press the Skip Reverse Button when there is a AV connection between your headset and your Bluetooth music player.
5. To the next song, press the Skip Forward Button when there is a AV connection between your headset and your Bluetooth music player.

The Bluetooth music player must support AVRCP.

Headset Call Tips

1. To setup the handsfree connection to your last used phone, press the Call-MFB when there is no handsfree connection between your headset and your phone.
2. To voice dial, press the Call-MFB when there is a handsfree connection between your headset and your phone.
3. To answer or end a call, press the Call-MFB when there is a call or during a call.
4. To reject a call, press and hold the Call-MFB about 2 seconds when there is a call.
5. To mute/unmute the microphone, press the Music-MFB and Call-MFB at the same time when during a call.
6. To redial the last call, press and hold the Volume Down Button about 2 seconds when there is a handsfree connection between your headset and your phone.

The Bluetooth phone must support handsfree profile.



Additional information

Product care

- Please check for any exceptions, due to national requirements or limitations, in usage of Bluetooth equipment before using your headset.
- Please check the laws and regulations on the use of mobile phones and hands free equipment like your headset in the areas where you drive. Do not carry or store flammable goods such as gas, liquid in your vehicle compartment containing your headset.
- Do not use your headset while the plane is in the air. Turn OFF your headset before boarding any aircraft.
- Do not use your headset near the medical equipment without requesting permission.
- Use of non- original accessories may result in lost of performance, product damage, electronic shock or injury, and warranty termination. Please note only service partners should remove or replace the battery.
- Do not attempt do disassemble your headset. your headset does not contain consumer serviceable or replaceable components. Only service partners should perform service.
- Do not place your headset in extreme hot or cold temperature.
- Do not place your headset in dusty or dirty area, and only use soft damp cloth to clean it.
- Do not place your headset near lit cigarettes, cigars or candles, or near open flames etc.
- Do not allow children to play with your headset, as they might injure themselves or others as well as your headset, and small parts of it may become a choking hazard.
- If you will not be using your headset for a while, store it in a place that is dry, free from damp, dust and extreme temperatures.

Potentially explosive atmospheres

For safety reasons, Turn off your electronic device when surrounded by possible explosive atmosphere. It is rare, but your electronic device could generate sparks which can cause an explosion or fire. Areas with a potentially explosive atmosphere are often, but not always, clearly marked. Explosive atmosphere may include gas stations, fuel or chemical storage facilities, and in environment where metal powders, grain, dust are contained in the air.

Federal Communications Commission (FCC) statement

This device complies with Part 15 of the FCC Rules. Operation is subject to the following two conditions: (1) This device may not cause harmful interference, and (2) this device must accept any interference received, including interference that may cause undesired operation.

This device and its antenna(s) must not be co-located or operating in conjunction with any other antenna or transmitter.

15.21
You are cautioned that changes or modifications not expressly approved by the part responsible for compliance could void the user's authority to operate the equipment.

15.105(b)

This equipment has been tested and found to comply with the limits for a Class B digital device, pursuant to part 15 of the FCC rules. These limits are designed to provide reasonable protection against harmful interference in a residential installation. This equipment generates, uses and can radiate radio frequency energy and, if not installed and used in accordance with the instructions, may cause harmful interference to radio communications. However, there is no guarantee that interference will not occur in a particular installation. If this equipment does cause harmful interference to radio or television reception, which can be determined by turning the equipment off and on, the user is encouraged to try to correct the interference by one or more of the following measures:

- Reorient or relocate the receiving antenna.
- Increase the separation between the equipment and receiver.
- Connect the equipment into an outlet on a circuit different from that to which the receiver is connected.
- Consult the dealer or an experienced radio/TV technician for help.

You are cautioned that changes or modifications not expressly approved by the party responsible for compliance could void your authority to operate the equipment.