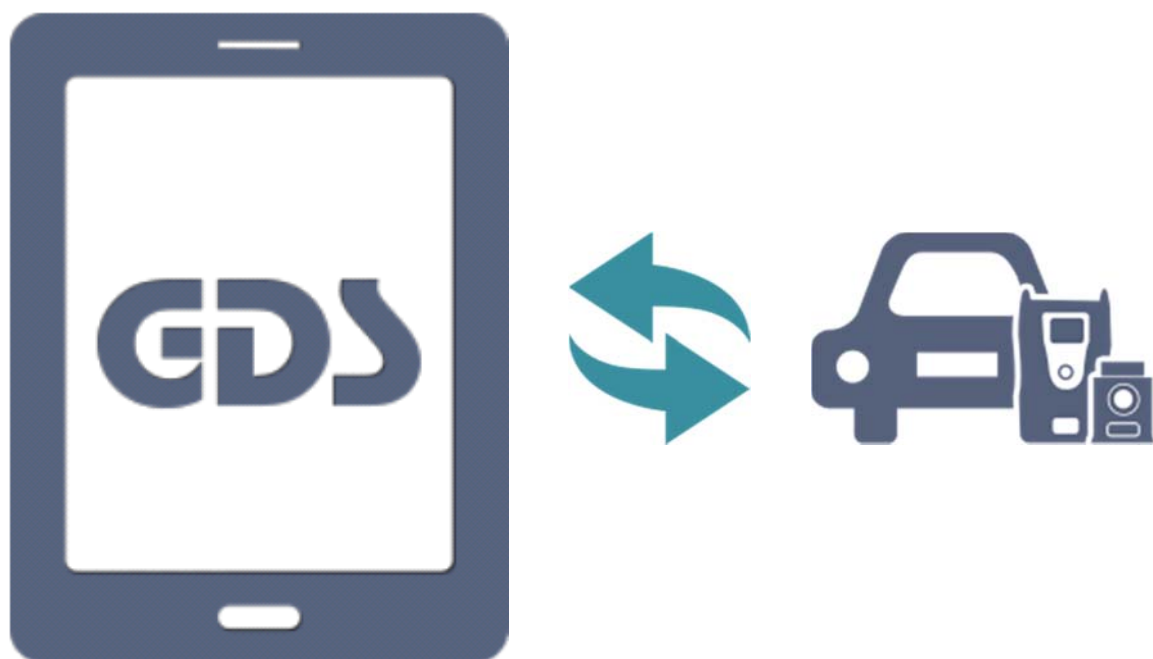




User Manual

MWT






MWT Introduce



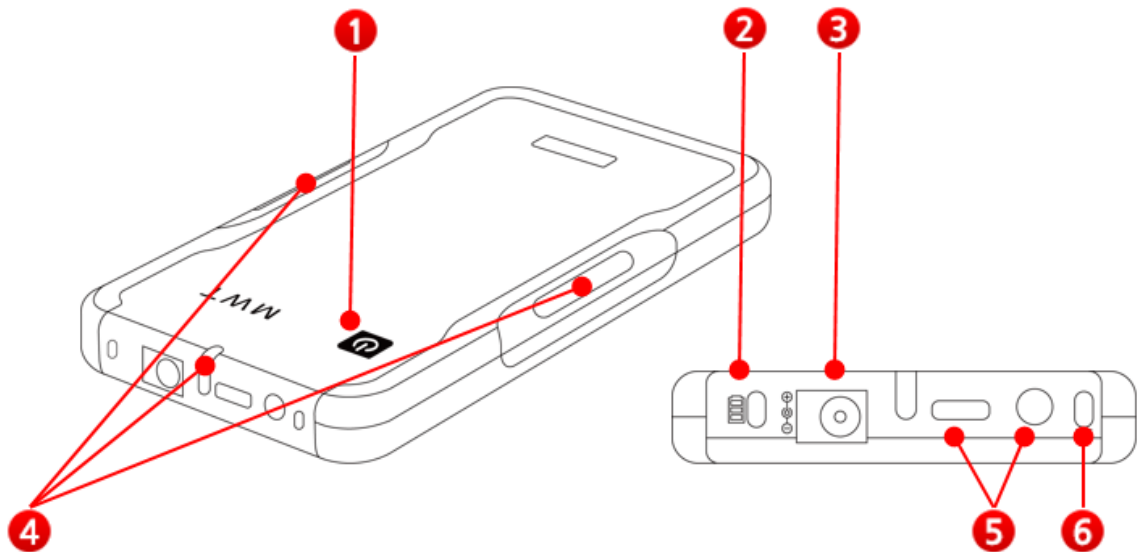
MWT(Multimedia & WPC Tester) is a system that checks functionality of Multimedia interfaces (Bluetooth, USB, AUX) and Wireless Power Charger installed within a vehicle.



MWT Component

Part Name	Part Number	Description
	TBD	MWT Module is for checking the functionality of multimedia interfaces such as Bluetooth, USB, AUX and Wireless Power Charger of a vehicle.

MWT Function



1	Power Button		To power On/Off MWT module
2	Battery LED Status	Green	Fully charged
		Red	Charging
		Off	No power
3	Power		AC/DC Adapter Power Connecting Port
4	WPC LED Status	Orange Illumination (Slow)	When WPC TEST(Auto Mode) is in process, 3 LEDs are blinking at the same time
		Orange Illumination (Fast)	When WPC TEST(Manual Mode) is in process, 3 LEDs are blinking at the same time
		Green	If WPC TEST fails, LED turns off after 3 seconds illuminating in green
		Red	If WPE TEST fails, LED turns off after 3 seconds illuminating in red
		Purple	Firmware Update Mode
5	Aux & USB Port		Connect the cable to Aux & USB Port for testing
6	Bluetooth LED Status		When Bluetooth pairs, LED illuminates in Blue

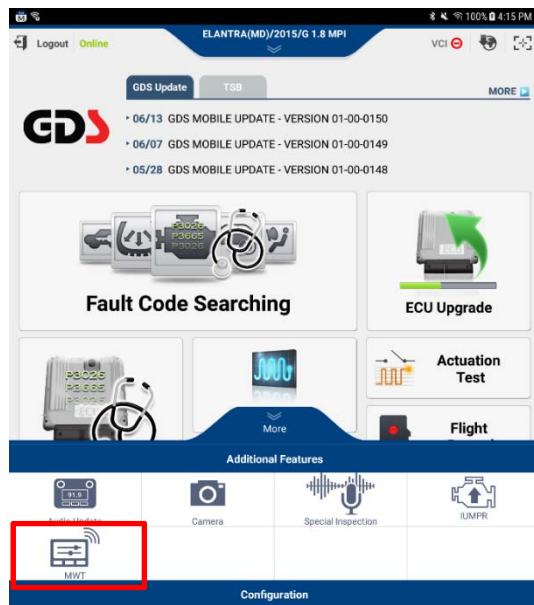
MWT Specification

Item	Description
CPU	ARM 32bit Cortex-M4 / 168MHZ
MCU Memory	256KB
Flash Memory	8MB
Wireless	Bluetooth
Interface	USB2.0, AUX
Charging	DC & Wireless charging
Battery	Li-ion Polymer 1,000mA/h (3.7V)
Operation Voltage	DC 9~30V
Operation Temperature	0°C~45°C
Size (W x D x H)	140 x 75 x14 (mm)
Weight	140g
Case	PC + ABS

MWT Connection

◆ Bluetooth Pairing

- This step is for pairing the tablet and MWT Module.



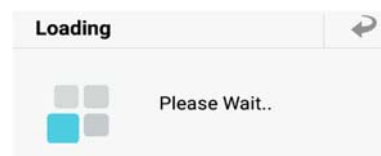
Step1

Touch MWT button at the bottom [Additional Features -> MWT].



Step2

Press [Refresh] button to search the MWT Module.





Step3

Select the found MWT Serial No. to proceed Bluetooth pairing with MWT.

Below message pops up if the pairing is succeed.



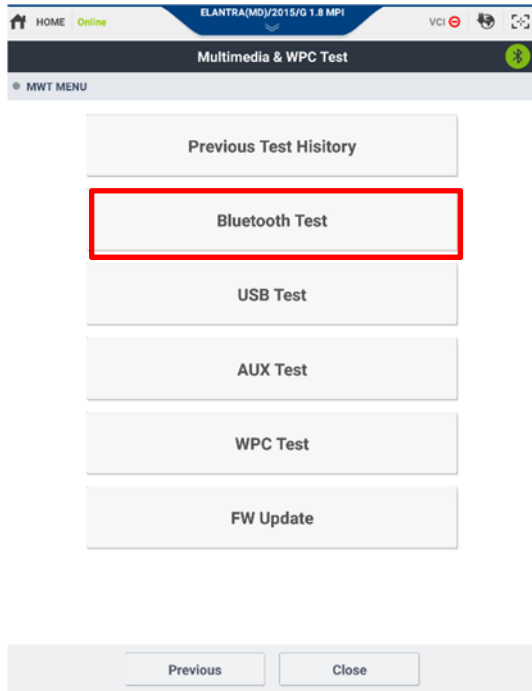
Step4

Pairing success

MWT Test

◆ Bluetooth Test

- To test the proper operation of Bluetooth functions.



Step1

Touch [Bluetooth Test] button.



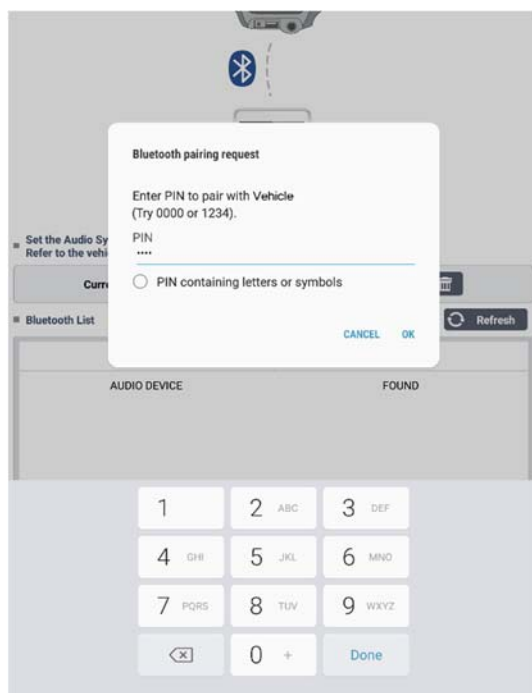
Step2

After set up the audio system of the vehicle as 'Bluetooth Test' mode, touch [Refresh] button.

Step3



Select the found device, 'AUDIO DEVICE'.



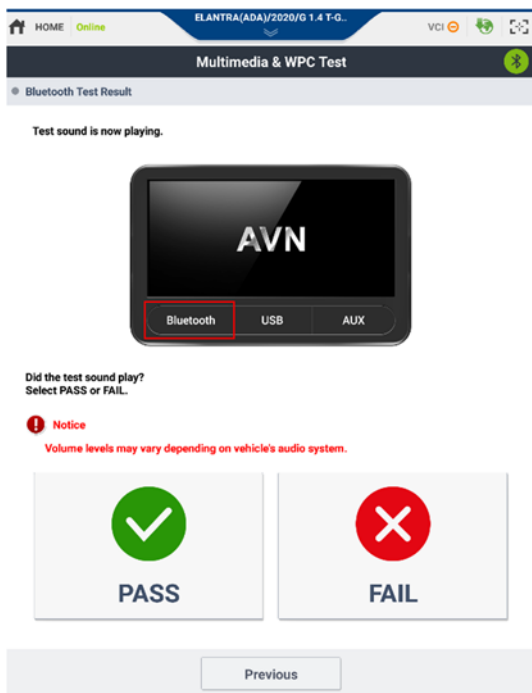
Step4

Enter the 'PIN Code'.



Step3

Tablet and Vehicle is paired.
Touch [Next] button.



Step4

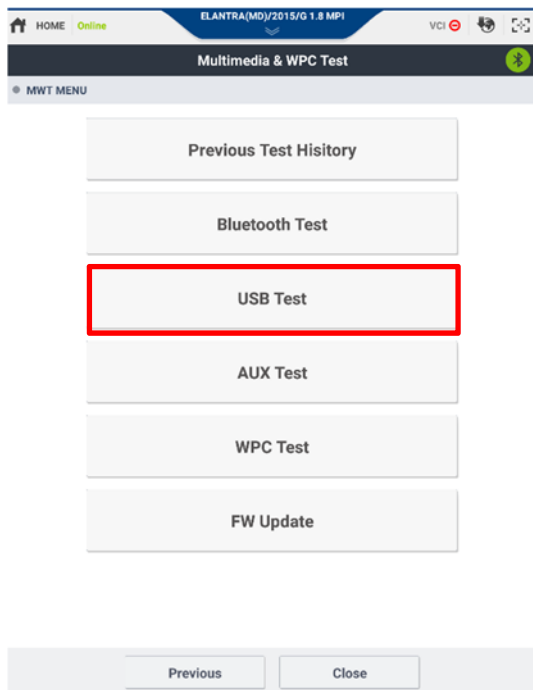
Test sound is playing.
Press [PASS] button if the sound is properly playing, or press [FAIL] if the sound is out of hearing.



Check the volume of the audio system.

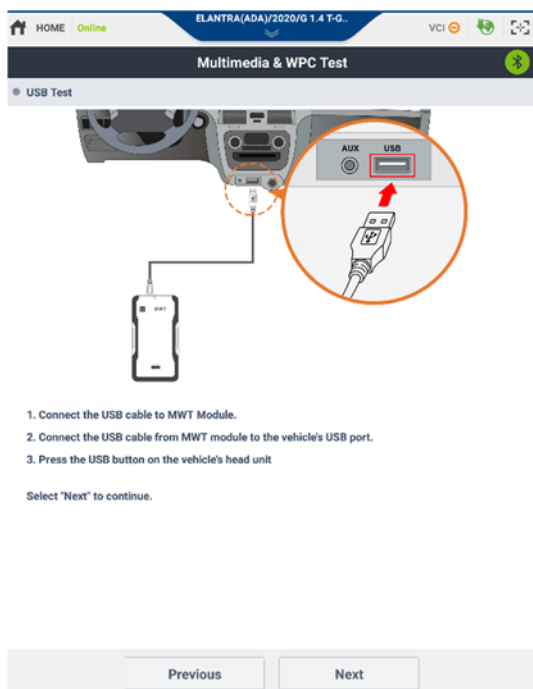
◆ USB Test

- To test the proper operation of USB Port and its function.



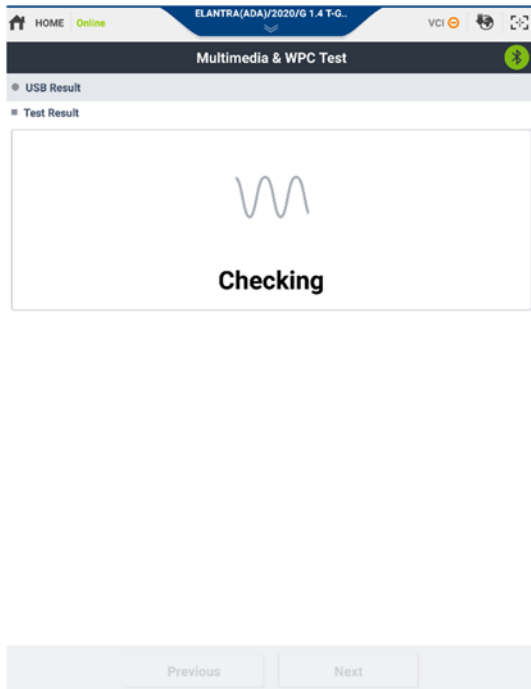
Step1

Touch [USB Test] button.



Step2

Connect the MWT module and Vehicle with USB Cable as the image, press [Next] button.



Step3

USB Charge Testing is in progress.



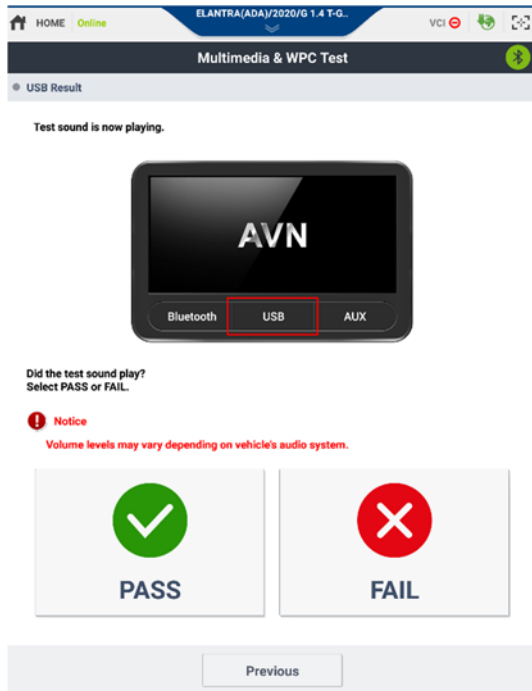
Step4

Displays the test result of 'USB Charge' as below.

<Image1>: Normal charging

<Image2>: Charging voltage is low, or re-check the connection of USB cable.

After check the status, touch [Next] button.



Step5

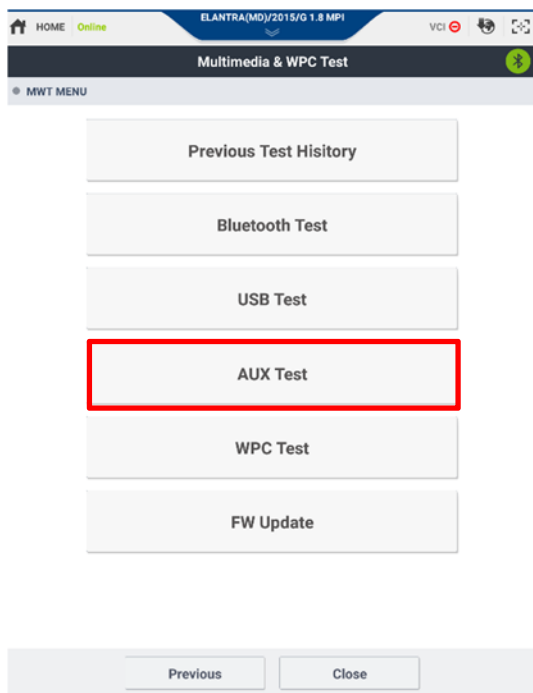
Test sound is playing.
Press [PASS] button if the sound is properly playing, or press [FAIL] if the sound is out of hearing.



Check the volume of the audio system.

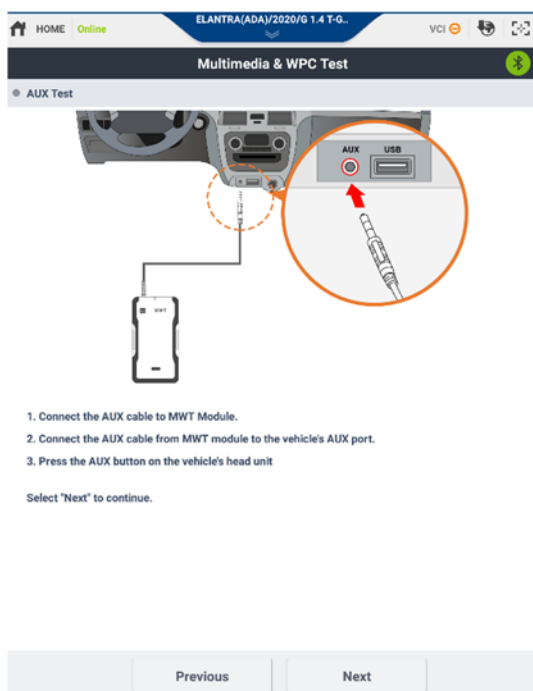
◆ AUX Test

- To test the proper operation of AUX Port and its function.



Step1

Touch [AUX Test] button.



Step2


Connect the MWT module and Vehicle with AUX Cable as the image, press [Next] button.

HOME Online ELANTRA(ADA)/2020/G 1.4 T-G... VCI

Multimedia & WPC Test

AUX Result

Test sound is now playing.



Did the test sound play?
Select PASS or FAIL.

Notice
Volume levels may vary depending on vehicle's audio system.

PASS FAIL

Previous

Step5

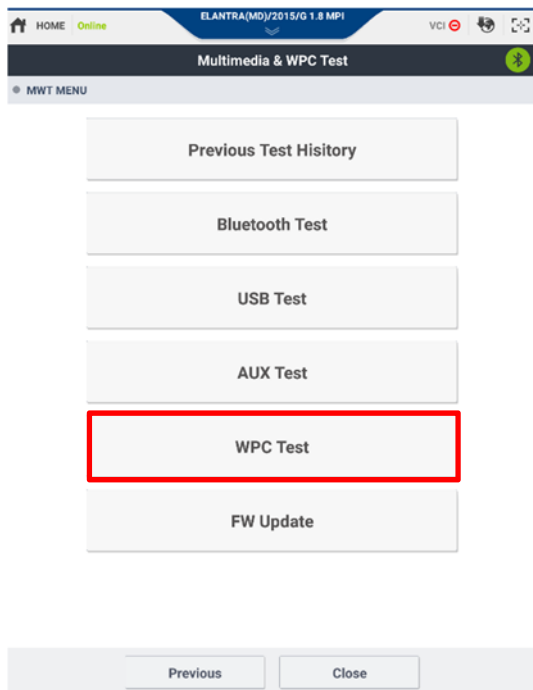
Test sound is playing.
Press [PASS] button if the sound is properly playing, or press [FAIL] if the sound is out of hearing.



Check the volume of the audio system.

◆ WPC Test

- To test the proper operation of WPC (Wireless Power Charger)




Step1

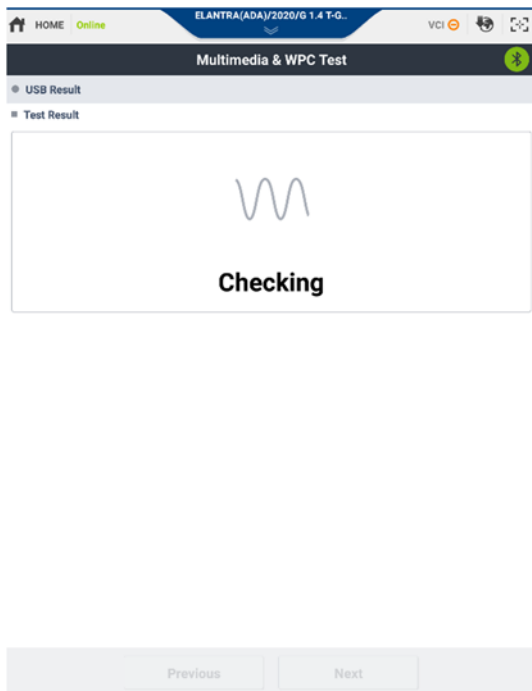
Touch [WPC Test] button.



Step2

Place the MWT module on the WPC (Wireless Power Charger) of the vehicle as the image, touch [Next] button.

 According to the vehicle model, the location of WPC could be different.



Step3

WPC charging is in testing.

Step4

Displays the test result of 'USB Charge' as below.

<Image1>: Normal charging

<Image2>: Charging voltage is low, or re-check the connection of USB cable.

After check the status, touch [Next] button.



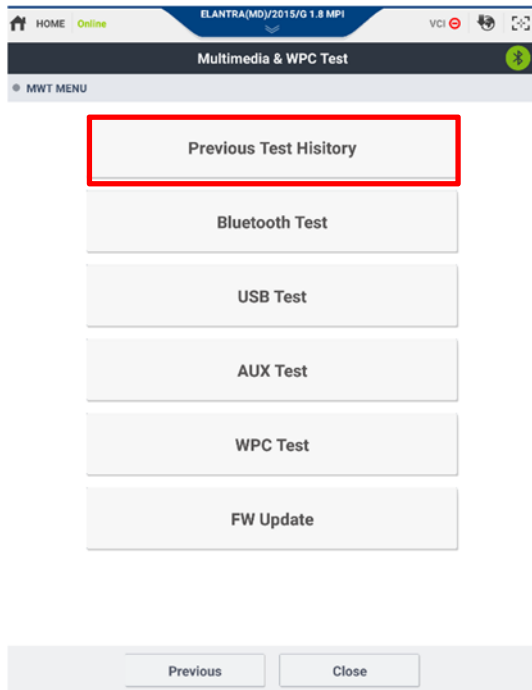
<Image1>



<Image2>

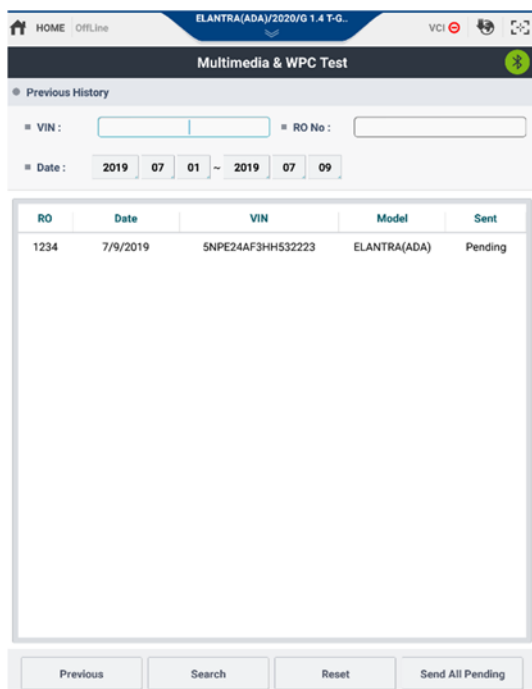
◆ Previous Test History

- To check the results of the tested vehicles



Step1

Touch [Previous Test History] button.



Step2

Search the past records of the tested vehicles.

◆ CAUTION

- **Power supply**
 - **MWT must be supplied from a power source of less than 8A, 100VA.**
- **Safety when using the battery**
 - **Risk of explosion if battery is replaced by an incorrect type.**
 - **Dispose of used batteries according to the instructions.**

FCC Compliance Statement

This device complies with Part 15 of the FCC Rules. Operation is subject to the following two conditions: (1) this device may not cause harmful interference, and (2) this device must accept any interference received, including interference that may cause undesired operation.

CAUTION : Any Changes or modifications not expressly approved by the manufacturer could void the user's authority to operate the equipment. This equipment has been tested and found to comply with the limits for a Class B digital device, pursuant to part 15 of the FCC Rules. These limits are designed to provide reasonable protection against harmful interference in a residential installation. This equipment generates, uses and can radiate radio frequency energy and, if not installed and used in accordance with the instructions, may cause harmful interference to radio communications. However, there is no guarantee that interference will not occur in a particular installation. If this equipment does cause harmful interference to radio or television reception, which can be determined by turning the equipment off and on, the user is encouraged to try to correct the interference by one or more of the following measures:

- Reorient or relocate the receiving antenna.
- Increase the separation between the equipment and receiver.
- Connect the equipment into an outlet on a circuit different from that to which the receiver is connected.
- Consult the dealer or an experienced radio/TV technician for help.

"This equipment complies with FCC radiation exposure limits set forth for an uncontrolled environment."

Product : Scan Tool

Model : MWT-101

P/No. : G1WTGMN001

Manufacturer : GIT Co., Ltd.

FCC ID : TMGG1WTGMN001

인증번호 : R-C-TMG-MWT-101

INPUT(동작입력전원) : DC 9-30V, 1A