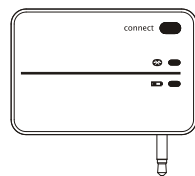


# Bluetooth Stereo Transmitter & Receiver Quick Guide

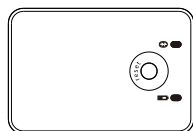
Congratulation! You have got a Mobile HIFI system.  
Please read this manual thoroughly, and set up your Bluetooth wireless music World.

## 1. Check the package contents

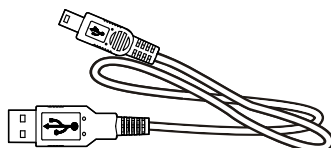
The package include:



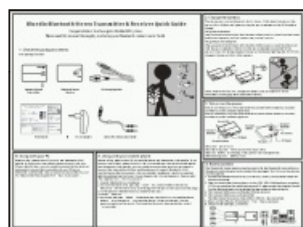
Bluetooth Stereo Transmitter



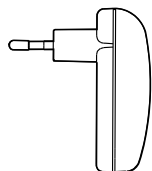
Bluetooth Stereo Receiver



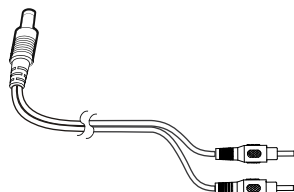
USB charging Cable



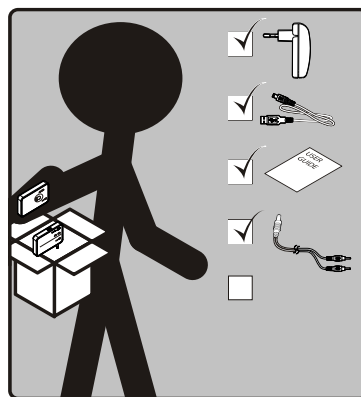
Quick Guide



Power Adapter



Stereo RCA interconnect cable



## 2. Charge the battery

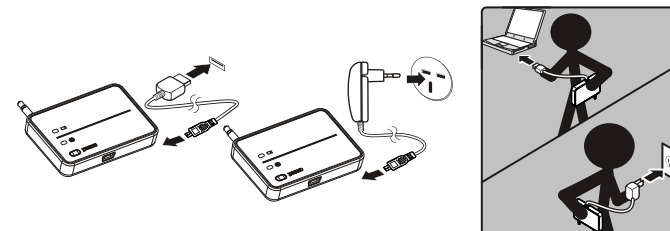
The device can work continuously for six hours. If it is almost no power, the power LED will flash red, please use the power adapter or the USB cable to charge.

Plug the USB cable

Plug one end of the USB jack into the transmitter/receiver, and insert the other end to a USB port of your PC. (Make sure your PC is on) or

Plug the power adapter

Plug one end of the USB jack into the transmitter/receiver, and the other end into the power adapter. (Make sure the power adapter connected to the power) When it is being charged, the power LED keeps lighting red. If it is fully charged, the power LED will turn green.

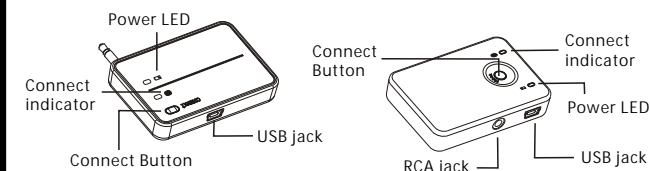


Note: Before the first use, charge the battery fully for about 10 hours. Thereafter, recharging takes about 90 minutes.

## 3. To turn on the power

To turn on the power, Press and hold the connect button (about 2 seconds) until the Connect indicator light blue.

To turn off the power, Press and hold the connect button (about 2 seconds) until the Connect indicator light off.



Blue LED: power is on

Blue flashing LED: finish connected successfully

Red LED: battery is charging, turns green when charged fully

Red flashing LED: battery is low

## 6. Using with your PC

Before using, please check if your PC has Bluetooth A2DP profile, if you are not sure of that, please consult with your PC provider. If it has, you only need to connect to the receiver, and needn't connect the transmitter. If your PC has no Bluetooth A2DP profile, then connect the transmitter to your PC. Please refer the chapter 4 of "How to connect".

## 5. Using with your mobile phone

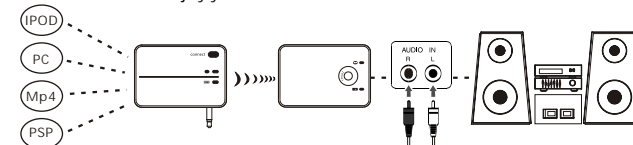
Before using, please check if your mobile phone has Bluetooth A2DP profile, if you are not sure of that, please consult with your mobile provider. If the mobile phone has Bluetooth A2DP profile, you only need to connect the receiver, and needn't connect the transmitter. For the mobile phone not support Bluetooth A2DP, use the transmitter to connect with your mobile's earphone's port (you need an additional plug transfer from 2.5mm diameter to 3.5mm diameter). Please refer the chapter 4 of "How to connect".

1. Enable Bluetooth on your phone
2. Turn on the receiver by pressing "reset" key. (Check that on the device connects with the receiver by confirming that the power/link LED is not flashing).
3. In the phone's Bluetooth menu, search for devices;
4. Select "Bluexon".
5. Enter the PIN code "0000". Select and play the Music on your mobile phone, select "Use Bluetooth". Your mobile phone will be connected with the receiver and send the music. To terminate the music transportation, select "use mobile".

## 4. How to connect

The Bluetooth stereo receiver can be used with the Bluetooth transmitter or Bluetooth Audio Dongle (not included this package). On first use, the devices must be paired.

1. Connect the Bluetooth receiver to your stereo system by the enclosed Stereo RCA interconnect cable.
2. Plug your transmitter into an player, such as MP4, IPOD, Mobile phone, computer, PSP. For connecting the mobile phone and PC, please refer the chapter 5 and 6. For the Mp4 and ipod, you just plug the transmitter to them directly.
3. Press connect button on your Bluetooth stereo receiver.
4. Press connect button on your transmitter.  
The Blue LED on the receiver/transmitter will flash when connected.
5. Open your favorite play list and press "Play" from your player.
6. Sit back, relax and enjoy your music.



## 7. Troubleshooting

If the Bluetooth Stereo System does not work, try the following:

- Ensure your mobile or PC was built - in BLUETOOTH A2DP profile.
- Check whether the system is out off power.
- Check the operation distance.
- Power off the receiver and reconnect again and ensure the right pairing password “0000” .
- Check whether other Bluetooth device is connected.
- Check whether the system is connected correctly.
- Check whether Bluetooth function of device is turned on.

## 8. Specifications

- Operating frequency band: 2.4 to 2.48GHz unlicensed ISM band
- Bluetooth specification: V1.2
- Output power class: class 2
- Transmission power: +3dbm to -20dbm
- Maximum data rate
  - Asynchronous: 723.2/57.6kbps
  - Synchronous: 433.9/433.9Kbps
- Operation temperature: -40 to +85 degrees
- Receiving signal range: -83dbm to -20dbm
- Receiving sensitivity: -83 dBm 0.1% BER
- Storage temperature: -40 to +105 degrees
- Transmit power consumption: 46mA
- Pairing code: “0000”
- Power supply: Standard Li-Ion battery, 350mAh Rating: 3.7V— 5vdc 50— 100mA
  - Only use the USB cable and net adaptor supplied.
- Physical Specification: Dimension: 62 mm x 42 mm x 12 mm

## 9. Caution:

This device complies with Part 15 of the FCC Rules. Operation is subject to the following two conditions: (1) this device may not cause harmful interference, and (2) this device must accept any interference received, including interference that may cause undesired operation.

Note: THE MANUFACTURER IS NOT RESPONSIBLE FOR ANY RADIO OR TV INTERFERENCE CAUSED BY UNAUTHORIZED MODIFICATIONS TO THIS EQUIPMENT. SUCH MODIFICATIONS COULD VOID THE USER'S AUTHORITY TO OPERATE THE EQUIPMENT.

## 10. Copyright

Bluedio is a trademark owned by G.Tech Technology Ltd.  
Other product names used in this quick guide are the properties of their respective owners and are acknowledged.