

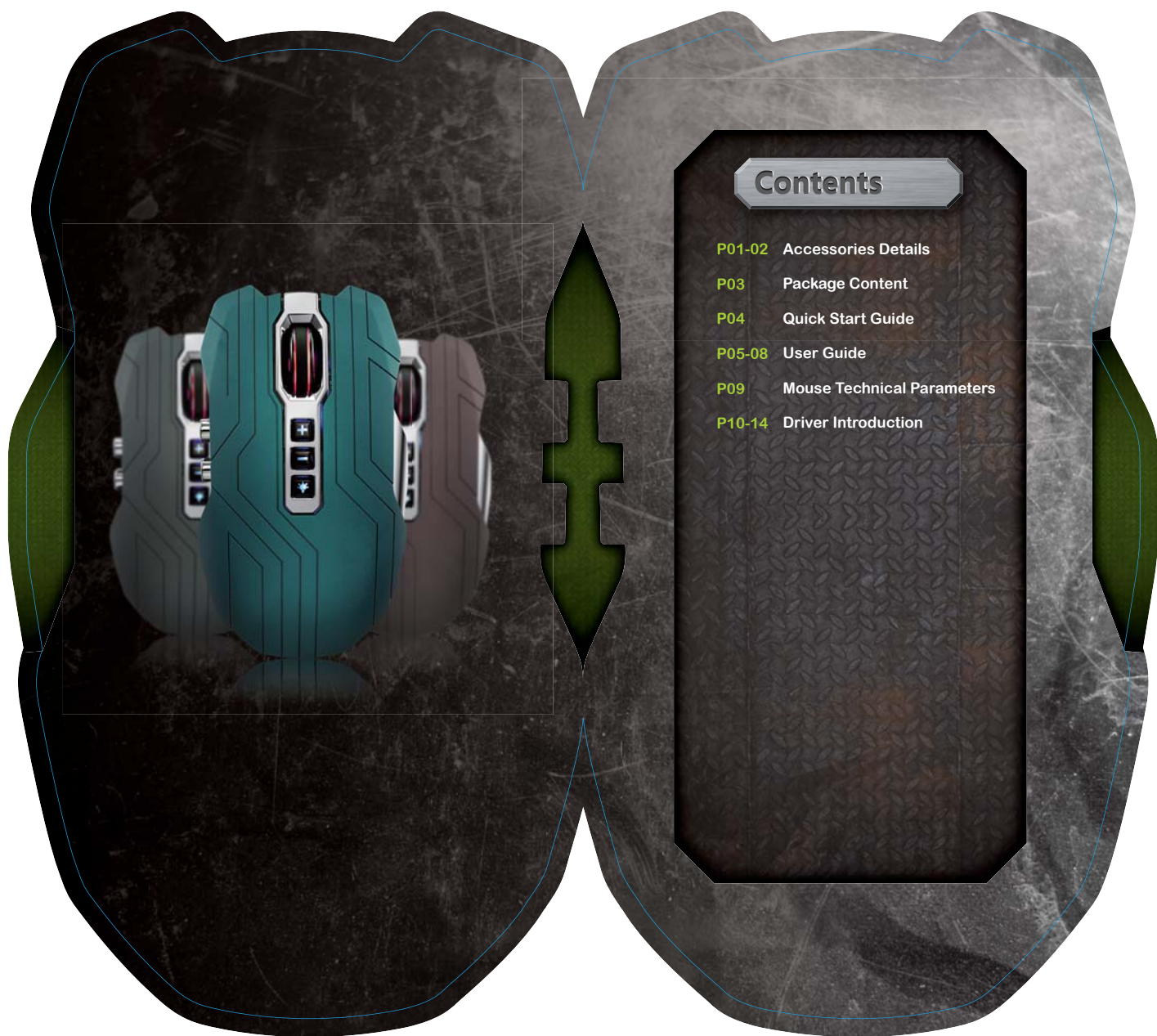


X300

DUAL
POWERTRAIN

X300

User's Guide

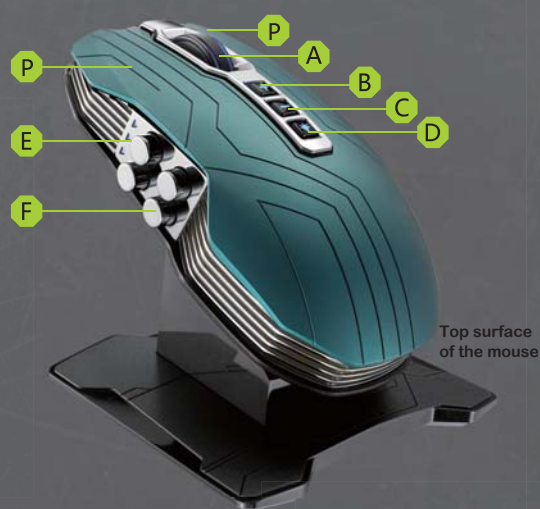
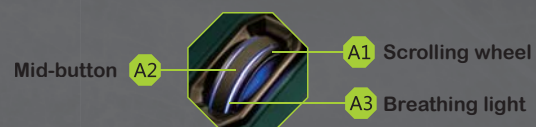


Contents

- P01-02 Accessories Details
- P03 Package Content
- P04 Quick Start Guide
- P05-08 User Guide
- P09 Mouse Technical Parameters
- P10-14 Driver Introduction

Accessories Details

- A Breathing light for wheel
- B DPI up button
- C DPI down button
- D Breathing light switch
- E Battery capacity indicator
- F Programmable side buttons
- G IR sensor
- H USB cable lock
- I Laser sensor
- J Mouse charging connect points
- K Magnet fix point
- L Charging dock connect point
- M Mode switch button for wireless
- N Wired mode USB port
- O Long-lasting foot pad
- P Turbo-click Left/Right button
- Q Charging dock/receiver USB port



Package Content

- 1 1* Gaming Mouse X300
- 2 1* Charging Dock (Receiver Function)
- 3 1* X300 USB Cable
- 4 2* X300 Spare Foot Pads
- 5 1* X300 Manual
- 6 1* X300 Quick Start Guide
- 7 1* X300 Driver CD



Quick Start Guide

- ⚠ Please check if the accessories are complete, and read this manual carefully before use.
Dual Power Train X300 Gaming Mouse can be used as not only wireless mouse but also wired mouse by dual powered.

Using as wireless mouse

- (1) Insert the USB cable into free USB port of PC
⚠ Caution: The master cable is for data transfer and only the master cable can activate the mouse, the assistant cable is only for charge help, if you connect the both USB ports to your PC, the charging time will be shorten.
- (2) Connect the trapezoid USB port to the charging dock which is also acted as the receiver.
- (3) To start using, switch on/off button to or
Energy-saving mode Gaming mode



Using as wired mouse

- (1) Insert the USB cable into available USB port of PC
⚠ Caution: The master cable is for data transfer and only the master cable can activate the mouse, the assistant cable is only for charging help, if you connect the both USB ports to your PC, the charging time will be shorten.
- (2) To start using, please connect the trapezoid USB port to the mouse.
- (3) If you want to pull out the cable, please push the USB cable wedge switch to release the cable before that.



Remark: After USB cable connected with the mouse, the wireless mode would be invalid automatically, and the mouse would be switched into wired mode accordingly

User Guide

Button function

Left/Right button — Turbo-click

Unique Turbo-Click technology reaches 1ms reports period and 8-times faster than common wired mouse, to bring you a good enjoy in gaming.

Breathing wheel light

All in one breathing light for wheel, combine the functions of scrolling wheel, mid-button and breathing light.

Scrolling wheel function:

The wheel is adopted high grade ABS material to assure its resist-abrasion for a long time when scrolling

Mid-button function:

Click the mid-button, move the screen by mouse pointer, mid-button also could be customized by self defined after installing driver.

Breathing light: different colours for distinguishing modes

Breathing Light Colour	Mode
Red	Wireless Gaming Mode
Blue	Wireless Energy-saving Mode
Red	Wired Mode

By different lighting ways, breathing light could be used for indications of power-on, using, binding, charging, intelligent recognizing, DPI switching

Action	Lighting way	Mouse status
under using	long-time lighting	normal use
use when the breathing light turn off	light off	normal use
hold mouse	light fade in	wake up at once
switch DPI	flash	switch DPI
put on charging dock	long-time lighting	Auto-bind successfully
put on charging dock	fade in/out by circle	charging

Programmable side-buttons

The four side-buttons with fault functions: volume up, volume down, forward and backward, they also could be self defined after installing the driver.

Top lighting buttons

Three top lighting buttons: DPI up button, DPI down button, lighting-switch button



Switch DPI: The mouse has three levels DPI, and could be switched by dpi switch button.

Click DPI + by once, the dpi will increases one level, there is no change after biggest level; click DPI - by once, the dpi will decrease one level, there is no change after smallest level.

You may also customize the dpi by the driver.

Default DPI:

Different factory settings of default dpi would be set under different mode, breathing light flashes different times according to its dpi

	Breathing Light Colour	1st Level	2nd Level	3rd Level
Breathing times	-	once	twice	three times
Wired Mode	Red	1080	2070	4050
Wireless Gaming Mode	Red	1080	2070	4050
Wireless Energy-saving Mode	Blue	1000	1200	1600

If you change the DPI by driver, breathing light would indicate DPI value after the latest status.



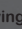
Lighting switch button:

Breathing light, charging indicator and top lighting buttons will be long-time lighting when mouse is working, and you can switch the light off by the button if you want the light off.

Instructions for wireless mode

Mode switch button

Under wireless mode

1. Switch the button to , the mouse power is cut off.
2. Switch the button to , the mouse is switched to Wireless Energy-saving Mode
3. Switch the button to , the mouse is switched to Wireless Gaming Mode

Dual-sensor switch



Under wireless gaming mode, the mouse will switch to laser sensor automatically with accurate location and satisfied performance. Under wireless energy-saving mode, the mouse will switch to IR optical sensor of low power consumption automatically for long battery life.

Breathing wheel light



Under wireless energy-saving mode, it shows blue; under wireless gaming mode, it shows red; under wired mode, it shows red too.

Charging dock

1. The charging dock combines the functions of mouse charging, acting as a receiver and auto-binding
2. To start using, connect the cable to the charging dock
3. The design of the dock is with magnet, it is available to fix the mouse to the dock.
4. The indicator at the bottom of charging dock will flash or light on according to different status. If you want to switch the light off, you can close the light by self setting from the driver.

Dual antenna technology

Under wireless modes, the charging dock is also used a receiver. Dual antenna technology ensure all directional data transmission up to 50 meters.

Mouse charging:

There is lithium battery inside the mouse. You can put the mouse to the dock and charge the mouse directly.

Automatic binding:

The mouse and dock will be paired as long as you put the mouse to the dock. During the pairing, the blue light will flash, when the blue lights on, it means the pairing is finished successfully.

Remark: mouse will be paired firstly for the first use and then run into charging mode

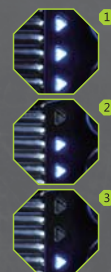
Charging dock indicator

Working status	Charging dock indicator	Mouse breathing light
Normal connection (no mouse)	Long-time lighting	/
Mouse binding	Flash several times	Long-time lighting
Charging	Fade in/out by circle	Fade in/out by circle

Mouse charging indicator

Battery capacity indicator

Battery power	Battery indicator (blue)
100%~80%	3 indicators long-time light
80%~50%	The bottom and middle indicators long-time light
50%~20%	The bottom indicator long-time light
<20%	Low power, the bottom indicator flashes



Function

1. It shows the battery charging status when mouse is charging
2. It is available for you to know battery power balance in use.

Intelligent touch-on technology

The mouse is adopted intelligent touch-on technology: The mouse will go into sleep down after stopping use for 2 seconds, and will be wake up immediately when hand detected.

Powerful lithium battery


There is powerful lithium battery inside the mouse. The lithium battery is non-memory charging mode for free using. It can works up to 25 hours with no pause under wireless gaming mode with all lights on if the battery capacity is full.

Instructions for wired mouse

USB cable

When you connect the cable with the mouse, which will work as a wired mouse. Its report rate could run up to 1000RPS which reaches the level of expert gaming mouse.

There is a cable wedge switch which is for lock the USB cable; you have to push the wedge switch when pulling out the USB cable.

 Caution: to avoid unnecessary damage, please use the original cable in the package.

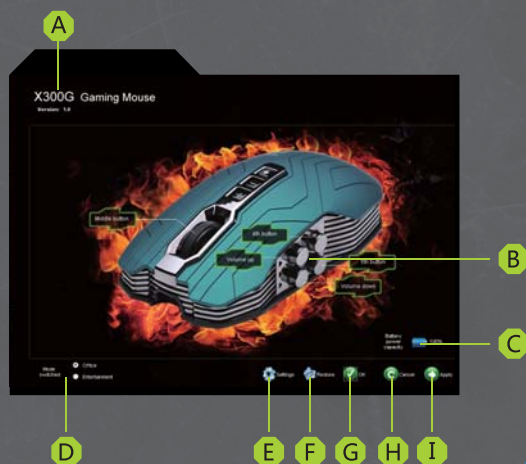
Technical Parameters

Gaming-grade specifications

Tracking	
Resolution	90-5040DPI
Frame rate	11750fps
Max acceleration	30G
Max speed	150ips(up to 150 inches(3.81m)/second)
Responsiveness	
USB data format	16bits/axis
USB report rate	1000RPS (up to 1'000 reports/second)
Sleep mode	Intelligent hand -recognize
Glide	
Dynamic coefficient of friction-Mu(k)	.09 ⁴
Static coefficient of friction-Mu(s)	.14 ⁴
Durability	
Buttons(Left/Right)	10 million clicks
Foot pad	250kilometers

Driver Introduction

- A Mouse Model. Reversion No.
- B Mouse buttons setting: change functions by clicking accordant button
- C Battery capacity: shows latest battery capacity
- D Setting switching: record switching of different settings
- E Setting: property setting for mouse
- F Reset: reset factory settings
- G Confirm: driver window will hide after confirming settings
- H Cancel: cancel all unconfirmed settings
- I Apply: go on other settings after confirmation



Computer status bar

There are two icons in status bar after driver installed

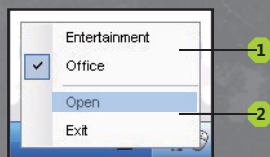


Battery icon: when mouse pointer moved here, it will show the battery capacity.



Mouse icon: double click it by left button, the window of driver would appear

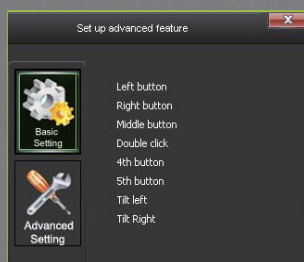
Single click by right button, two switchable modes arise (refer to 1 in below picture) Click "open", driver window would appear; click "quit", close the driver (refer to 2 in below picture)



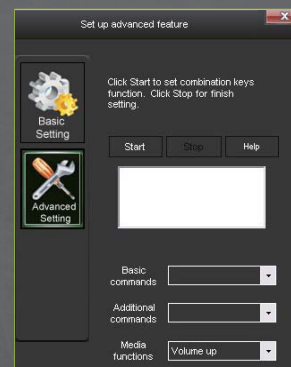
Button settings

Click the button you want to customize, there is a dialog box - Advanced settings, it contains two options: basic setting and advanced setting

In basic setting: you may make a quick setting of left button, right button, mid-button, double click, 4 key, 5 key, left moving, right moving

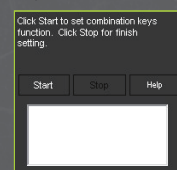


Advanced setting contains:



Macros settings steps:

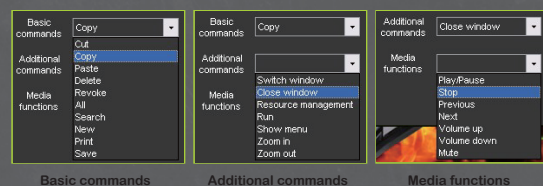
click start → input character → click over



⚠ Macros settings could support 3 characters at most

Macros using

1. Click the button for Macros settings
2. Macros setting data arise at the accordant place



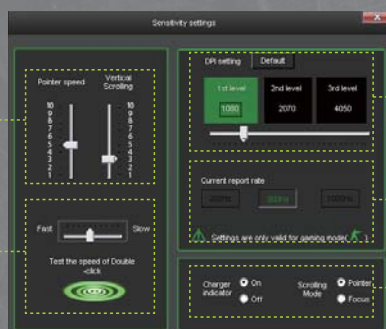
Basic commands

Additional commands

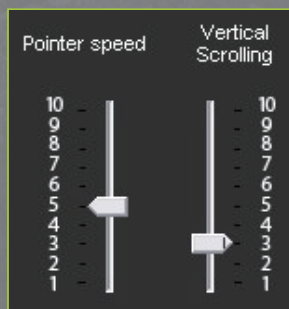
Media functions

Accuracy settings

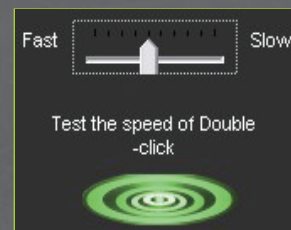
Click setting, there is a dialog box



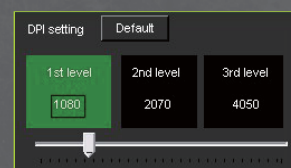
- 1 Needle settings for scrolling wheel: This is for needle speed and vertical wheel speed.



- 2 Speed settings for double click: This is for speed of double click, you may take a test with it.



- 3 DPI settings: This is for customizing DPI. It could be any 90-multiple value between 90-5040.

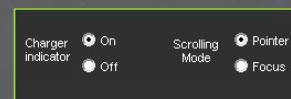


⚠ DPI settings by driver is only valid under wired mode and wireless gaming mode, and could not be changed under wireless energy-saving mode.

- 4 Report Rate Showing
This is for showing USB report rate. Wired mode is 1000Hz, wireless gaming mouse mode is 500Hz, and wireless energy-saving mode is 250Hz



- 5 Other settings
This is for on/off settings of charging dock indicator, and needle or focus mode of scrolling wheel



13

14

Setting switching

Driver could reserve two modes, different button functions and dpi content could be set under different modes



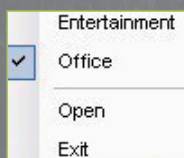
The name of mode could be revised as per your favorite by double clicking, as below:



If you want to back to reset mode, click "reset" button, then click "apply" or "confirm".

How to switch:

1. Single click mouse icon by right button, the name of modes arise



2. Under driver window, click the accordant name, then click "apply" or "confirm"

Settings steps:

Driver settings steps:

1. Set the contents by your demand



2. Click "apply" or "confirm"



3. Leave your hand from mouse for 3-5 seconds
4. Once the light of the mouse is off, the settings are valid



Remark:

1. The mouse has function of reserving profiles. You can still use the activated set profiles when quit driver or change computer
2. After settings, you must leave your hand from the mouse for 3-5 seconds, otherwise, the settings data could not be sent to mouse, and the setting would fail.

1, Changes or modifications not expressly approved by the party responsible for compliance could void the user's authority to operate the equipment

2, NOTE: This equipment has been tested and found to comply with the limits for a Class B digital device, pursuant to Part 15 of the FCC Rules. These limits are designed to provide reasonable protection against harmful interference in a residential installation. This equipment generates, uses and can radiate radio frequency energy and, if not installed and used in accordance with the instructions, may cause harmful interference to radio communications. However, there is no guarantee that interference will not occur in a particular installation. If this equipment does cause harmful interference to radio or television reception, which can be determined by turning the equipment off and on, the user is encouraged to try to correct the interference by one or more of the following measures:

- Reorient or relocate the receiving antenna.
- Increase the separation between the equipment and receiver.
- Connect the equipment into an outlet on a circuit different from that to which the receiver is connected.
- Consult the dealer or an experienced radio/TV technician for help.