

G-Tek GSM / VoIP Phone



Model: PWG-600
User Manual

TABLE OF CONTENTS

KNOWING YOUR PWG-600	4
KEYS AND SCREEN LAYOUT	5
SIDE & TOP VIEW.....	8
INCOMING CALL ALERT OPTION	9
DISPLAY INDICATORS	10
GETTING STARTED.....	11
SIM CARDS	11
PIN LOCK SIM.....	11
CHANGE PIN.....	11
USB INTERFACE	11
CHARGING.....	11
BATTERY	11
LCD	12
REAL TIME CLOCK	12
MAIN FUNCTIONS.....	13
MAKING AN OUT GOING CALL	13
MAKING A CALL	13
<i>Making a call using the phone book directory features.....</i>	<i>13</i>
<i>Speed dialing a phone number.....</i>	<i>14</i>
<i>Assigning a phone number to a speed dialing key:.....</i>	<i>14</i>
MAKING AN EMERGENCY CALL	15
ANSWERING OR REJECTING AN INCOMING CALL.....	15
OTHER FUNCTIONS DURING A CALL	16
<i>Call Waiting (VoIP Call Only).....</i>	<i>16</i>
<i>Call Forwarding (VoIP Call Only).....</i>	<i>17</i>
<i>Call Barring (VoIP Call Only).....</i>	<i>18</i>
<i>Caller Id (VoIP Call Only).....</i>	<i>19</i>
<i>Send DTMF tone.....</i>	<i>19</i>
<i>Reject a call.....</i>	<i>19</i>
<i>Put a call on hold.....</i>	<i>20</i>
<i>Have a Conference.....</i>	<i>20</i>
<i>Ending a call.....</i>	<i>20</i>
AUTOMATIC KEY LOCK.....	20
MANUAL KEY LOCK.....	20
POWER SAVING	20
MAKING BALANCE ENQUIRY	21
CONNECTING A WIRED HEADSET	21
SETTING SPEAKER PHONE VOLUME	21
SETTING MICROPHONE VOLUME.....	22

SETTING THE LCD SLEEP INTERVAL.....	22
TURNING ON THE KEYPAD LIGHT.....	22
SETTING THE DATE AND THE TIME	22
<i>Setting the time</i>	22
SETTING LCD BACKLIGHT	23
ALARM CLOCK.....	24
RESTORE FACTORY DEFAULTS.....	24
USING THE MENUS.....	25
ACCESSING A MENU	25
LIST OF THE MENUS	25
MENU FUNCTIONS.....	37
PHONEBOOK	37
MESSAGES.....	38
<i>Writing and sending a message</i>	38
<i>Viewing details of sent items</i>	40
CALL LOGS.....	41
TONES.....	43
<i>Setting ring tones:</i>	43
SETTING RING TONE PROFILES	44
SETTINGS	46
<i>General Configuration</i>	46
<i>WiFi Settings</i>	46
<i>Setting VoIP profiles</i>	50
<i>Setting GPRS parameters</i>	53
<i>Pairing a Bluetooth headset with PWG-600</i>	53
INFORMATION	54
<i>Viewing network statistics</i>	54
<i>Viewing the GPRS Data Count</i>	55
<i>Viewing the Firmware Version and other information</i>	56
<i>Upgrading Firmware Using the USB Download Mode</i>	57
CONNECTING PWG-600 WITH A PDA (PERSONAL DIGITAL ASSISTANT).....	60
DOWNLOADING POLYPHONIC RING TONES FROM A PDA.....	61
SETTING SOS NUMBERS	62
BROWSING THE INTERNET WITH A PDA THROUGH BLUETOOTH.....	63
BROWSING THE INTERNET USING GPRS	63
CONNECTING TO THE GPRS NETWORK USING A PDA	66
BROWSING THE INTERNET USING WiFi	67
ADDITIONAL INFORMATION.....	69
FCC REGULATION	69
EUROPEAN REGULATION.....	70
RF EXPOSURE REGULATION (SAR)	70

KNOWING YOUR PWG-600

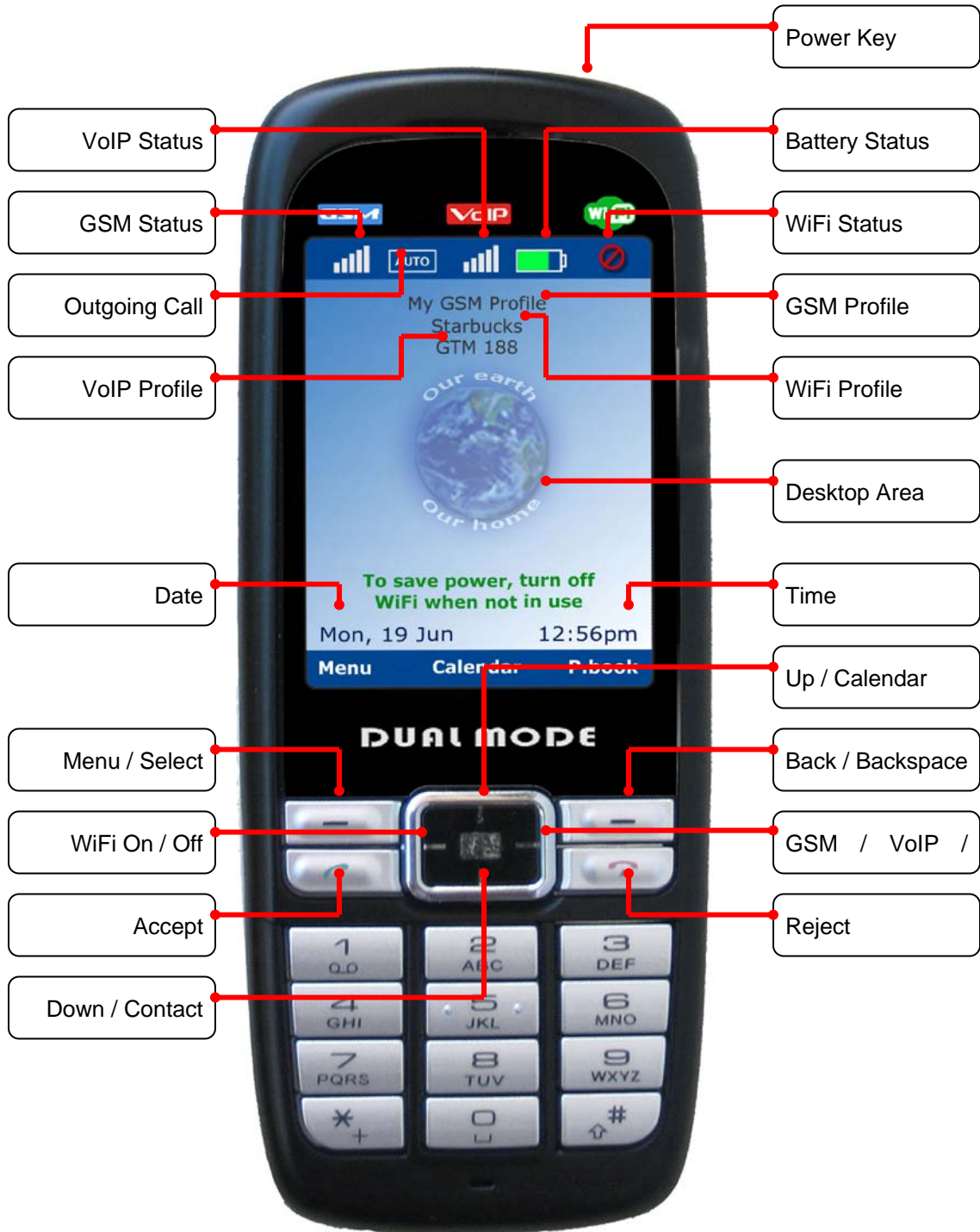
Thank you for your purchase of the PWG-600 Personal Wireless Gateway. Using the wireless handset you can now connect to GSM/GPRS, WiFi, VoIP networks, and Bluetooth devices.

The PWG-600 is able to function as a GSM phone as well as a VoIP phone and also as a modem to access WiFi (802.11b) and GPRS networks.

Some of the significant features of PWG-600 are as follows:

- PWG-600 works as a **standalone device**. You can use PWG-600 without a PDA (Personal Digital Assistant) or a Laptop.
- PWG-600 has a keypad and an LCD. Hence PWG-600 functions as a simplified GSM phone or a WiFi IP Phone to make and receive VoIP calls without using a PDA or a laptop or a headset.
- PWG-600 has a **USB terminal**. You can connect PWG-600 to any PC / Laptop / notebook and provide wireless data connectivity at a higher rate using WiFi or GPRS networks.

Keys and Screen Layout



The description of the keys shown above is as follows:

Power key: Switches the phone “On” and “Off”. This key can also be used to stop an alarm.

“Menu /Select” key: This key is used for menu selection. When pressed, the key performs the function that was selected.

WiFi On/Off key: Press this key to activate WiFi. Press again to turn off WiFi.

GSM/VoIP/Auto key: This key is used to select GSM or VoIP as outgoing call option.

- **GSM:** Press this key once. “GSM” is displayed. (Or press this key successively until “GSM” is shown). An icon is displayed indicating that GSM has been selected as outgoing call option.
- **VoIP:** Press this key twice. “VoIP” is displayed. (Or press this key successively until “VoIP” is shown). An icon is displayed indicating that VoIP has been selected as outgoing call option.
- **Auto:** Press this key thrice. “Auto” is displayed. (Or press this key successively until “Auto” is shown). An icon is displayed indicating that Auto mode has been activated for outgoing call option. The *Auto* mode is used to switch between VoIP and GSM. If the *Auto* mode is selected, PWG-600 uses VoIP for making outgoing calls. If a WiFi hotspot is unavailable or VoIP is not registered, you are asked if you wish to use GSM. If selected, GSM is used as the outgoing call option.

Up/Calendar key: This key has two main functions:

- **Calendar:** From the desktop, press this key to view the Calendar and date and time settings
- **Up:** Press this key to scroll up.

Down/Contact key: This key has two main functions:

- **Contact:** From the desktop, press this key to view the phonebook contact list
- **Down:** Press this key to scroll down.

Back/Backspace/Phonebook key: This key has three functions.

- **Back:** Press this key to go to the previous menu.
- **Backspace:** Press this key to delete a character to the left of the cursor while typing characters.
- **Phonebook:** From the desktop, press this key to view the phonebook sub menu.

Accept key: This is a multi-function key.

- **Accept:** Press this key to accept an incoming call.

- **Call:** Press this key to dial a phone number. Enter the number first, and then press the *Accept* key to dial the phone number.
- **Call log:** From the desktop, press this key to view the dialed call log.

Reject key: This key has two functions.

- **Reject:** Press this key to reject an incoming call.
- **Terminate:** Press this key to terminate an active call.

Reset Key: When the reset key is pressed, the parameters that are not saved in Flash get erased. The reset key is shown in the following page.



Key: Press this key two times successively to enter the character '+'.



Key: Press the numeric key '1' to enter a '.' and a ':'. The first press displays '.'. Two successive presses display ':'.

Volume increase key:

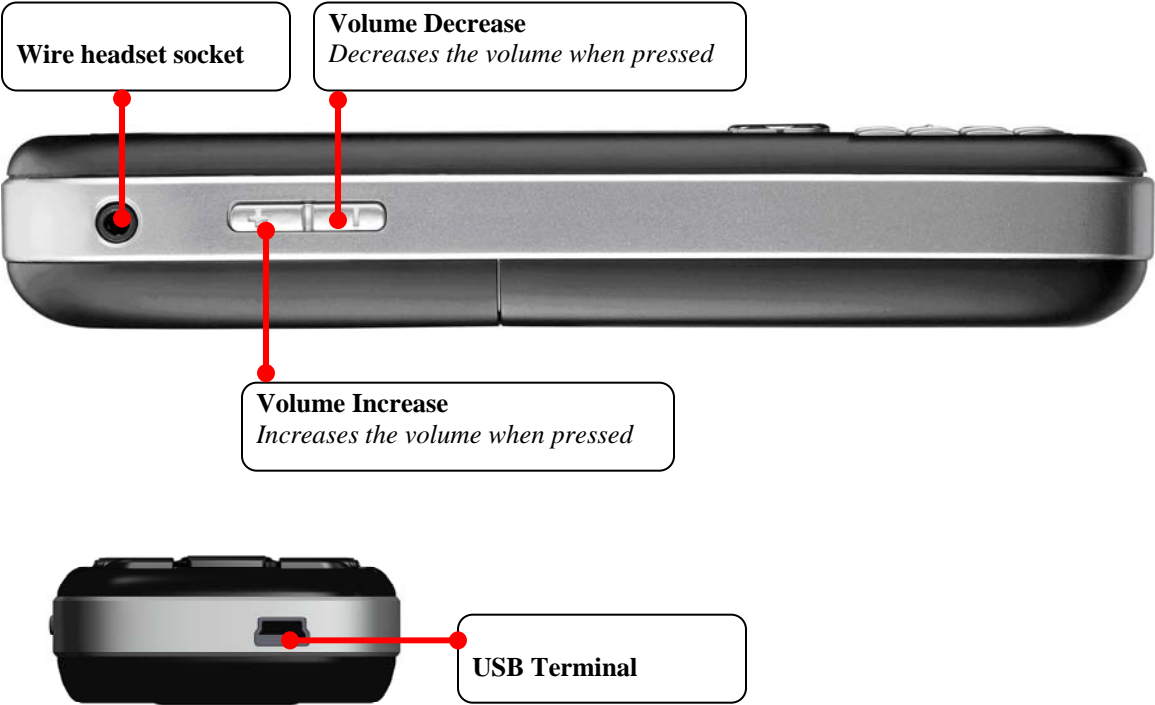
- Increases the audio volume if pressed while a call is in progress.
- Increases the ring tone volume if pressed during the reception of an incoming call while the incoming call alert is heard.
- Enters the USB download mode: Press the volume decrease key before you turn on PWG-600, and then press the reset key. The phone enters the USB download mode.

Volume decrease key:

- Decreases the audio volume if pressed while a call is in progress.
- Decreases the ring tone volume if pressed during the reception of an incoming call while the incoming call alert is heard.
- Enters the USB download mode: Press the volume decrease key before you turn on PWG-600, and then press the reset key. The phone enters the USB download mode.

*NOTE: The volume keys are also used to make an emergency call. To read how to make emergency calls, please see "**Error! Reference source not found.**"*

Side & Top View



Tones

You can set the key beep to hear tones while pressing the keys on the keypad.

The steps to turn the key beep on are as follows:

- From the desktop press the “Menu” key.
- Navigate using the navigational keys and select the “Tones” menu. Select the “Tones” menu by pressing the “Select” key.
- Select “Profiles” and press the “Select” key.
- Select “General” and press the “Select” key.
- Select the “Key Beep” option and press the “Select” key.
- Select the “On” option and press the “Select” key.
- Select the “Activate” option and press the “Select” key to turn on the key beep.

You can also hear the following preset tones:

- A special tone is heard when the battery strength falls, when the WiFi signal strength falls, or when the GSM strength falls.
- When the WiFi connection is established a single beep is heard. When the WiFi connection is discontinued two successive beeps are heard.
- When PWG-600 is turned on and is ready for use, a special tone called “Happy Tone” is heard.
- A specific tone is heard when an emergency call is made. Another specific tone is heard when the emergency call is ended.
- When a Bluetooth connection is interrupted a specific ring tone called “Crying tone” is heard.

Incoming call alert option

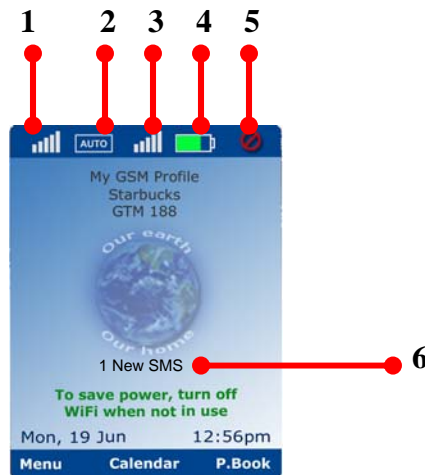
PWG-600 is in the “Ring mode” by default. You can set any of the following modes as incoming call alert option:

The steps to set the ringing mode are as follows:

- From the desktop, press the “Menu” key.
- Using the navigational keys, navigate and select the “Tones” menu. Press the “Select” key to select the “Tones” menu.
- Select “Profiles” and press the “Select” key.
- Select “General” and press the “Select” key.
- Select “Alert Type” and press the “Select” key.
 - Disable
 - Ringer
 - Vibrator
 - Ring + Vibr
 - Ring after Vibr
- Select the alert mode you want and press the “Select” key.

Display indicators

The indicators related to the various phone functions are displayed in the screen as shown.



1. Displays the strength of GSM signal in the locality.
2. Displays the outgoing call option. The '**GSM**' indicates that the current outgoing call option is GSM. '**VoIP**' indicates that the outgoing call option is VoIP. '**Auto**' indicates that the outgoing call option is Auto.

Note: When the outgoing call option is being set to 'Auto' and if you dial a number, the PWG-600 will first attempt to place the call via VoIP and if it fails, it will attempt to place the call via GSM.

3. Displays the VoIP signal strength and whether it is able to be registered to a SIP server. The presence of five bars indicates the strongest signal and the presence of a single bar indicates the weakest signal. The presence of the "🚫" indicates that the WiFi is turned off.
4. Displays the charge level of the battery. The presence of all the five bars indicates that the battery is fully charged or has 100% charge. Charging is indicated by moving charging bar.
5. Displays the strength of WiFi signal available at current location. The presence of five bars indicates the strongest signal and the presence of a single bar indicates the weakest signal. The presence of the "🚫" that the WiFi is turned off.
6. Displays that a new message has been received.

The following are displayed below the icons labeled as 1, 2, 3, 4 and 5.

1. The **GSM carrier service** is displayed in the first row below the icons.
2. The **name of the WiFi access point** is displayed in the second row.
3. The **name of the current VoIP profile** is displayed in the third row.
4. **Date** is displayed at the bottom left corner.
5. **Time** is displayed in the bottom right corner.

GETTING STARTED

SIM cards

Two SIM cards can be inserted into PWG-600. However, only the selected SIM card remains active. The SIM card is used for GSM authentication.

PIN Lock SIM

The SIM card lock protects your subscription from unauthorized use. Most SIM cards are locked at the time of purchase. If the SIM card lock is on, you will have to enter a 'PIN' (Personal Identity Number) each time you turn on the PWG-600.

Change PIN

If you had entered the PIN incorrectly for three successive times, the SIM card will be blocked.

To unblock the SIM card, you must enter the 'PUK' (Personal Unblocking Key). The Network service provider supplies the PIN details and the PUK details.

To change the 'PIN':

- From the desktop, press the "Menu" key. Press the "Down" key to navigate to the "Settings" sub menu and press the "Select" key
- Press the "Down" key to navigate to the "Gsm Settings" sub menu and press the "Select" key
- Press the "Down" key to navigate to the "Change SIM Pin" item and press the "Select" key
- Key in the old 'PIN' and press the "Select" key
- Key in the new 'PIN' and press the "Select" key to confirm changes of the new 'PIN'

Note: The SIM card lock only protects the subscription and does not protect PWG-600 from unauthorized use. If you had entered the PIN incorrectly for three successive times, the SIM card will be blocked. To unblock the SIM card, you must enter the 'PUK' (Personal Unblocking Key). The Network service provider supplies the PIN details and the PUK details.

USB Interface

A computer is WiFi enabled if PWG-600 is connected to it using a USB 1.1/2.2 enabled terminal.

Charging

Battery of PWG-600 will be charged through USB.

Battery

Type	Talk time	Standby
Li-Ion	4 hours (approximately)	100 hours

LCD

PWG-600 has a color TFT display with a white LED backlight.

LCD Specifications	
Colors	262K colors
Resolution	240 pixels (w) x 320 pixels (h)
Pixel size	00.141mm (w) x 0.141mm (h)

Real Time Clock

PWG-600 has an inbuilt real time clock (RTC) module that keeps track of the date and time.

The RTC maintains minutes, hours, day, date, month, and year information. The date at the end of the month is automatically adjusted for months having less than 31 days, including corrections for leap year.

The clock operates in 12-hour format with am/pm indicator.

MAIN FUNCTIONS

Making an Out Going Call

You can make GSM or VoIP calls using PWG-600. The steps to select the type of Out Going Call are as follows:

- From the desktop, press the “Menu” key.
- Using the navigational keys, navigate and select “Settings”. Press the “Select” key to select the “Settings” menu.
- Select “General” and press the “Select” key.
- Select “Outgoing Call” and press the “Select” key. The following sub menus are displayed when you selected “Outgoing Call”.
 - **GSM:** Select “GSM” and press the “Select” key to set the outgoing call as GSM calls.
 - **VoIP:** Select “VoIP” and press the “Select” key to set the outgoing call as VoIP calls.
 - **Auto:** Select “Auto” and press the “Select” key to set the outgoing call as Automatic.

Note: When the outgoing call mode is set to Automatic, and when you place a call, the phone will attempt to make calls using VoIP. If the number is not reachable, it will prompt a confirmation message to place the call via GSM.

Making a call

1. Key in the phone number.

Note: If you key in an incorrect digit, press the “Back” key to delete the character to the left of the cursor.

2. Press the “Accept” key to call the number.
3. Press the “Reject” key to terminate the call.

Making a call using the phone book directory features

You can make calls using the phone book. The storage capacity of the phone book depends on the SIM card memory.

To make a call:

1. From the desktop, press the “Menu” key.
2. Select “Phonebook” and press the “Select” key. The following options are shown.
 - a. Add New Contact
 - b. Search Contact
 - c. Delete Contacts
 - d. Edit Contact
 - e. Assign Speed dial

3. Select "Search" and press the "Select" key.
4. A screen titled "Search" is displayed. Key in the first few letters of the name. Press the "Select" key to search the contact.

Note: If the numbers '123' are displayed at the bottom then it indicates that the number keys can be used to enter numbers. Press the '#' key to use the number keys to enter alphabets.

5. Press the "Accept" key to call the number after the name and number to be called are displayed.
6. Press the "Reject" key to terminate the call.

Speed dialing a phone number

If you have assigned a phone number to one of the number keys, you can call the number as follows:

- Press the number that has been assigned to the phone number (hotkey) from the numeric keypad.
- Press the "Accept" key to call the number.
- Press the "Reject" key to terminate the call.

NOTE: You can also speed dial a number by pressing and holding the hotkey for sometime.

Assigning a phone number to a speed dialing key:

- From the desktop, press the "Menu" key.
- Select the "Phonebook" menu and press the "Select" key. The following options will be displayed:
 - Add New Contact
 - Search Contact
 - Delete Contact
 - Edit Contact
 - Assign Speed Dial
- Select "Assign Speed Dial" and press the "Select" key.

Note: Press this button to assign a hot key to a contact. A list showing the hotkeys (2-9 only) and names of the contacts is shown. Select a contact name and press the "Select" key to assign the corresponding hot key to it.

The following submenus are displayed if you select a contact to which a hotkey has already been assigned.

- **Modify:** Press this button to change hot key assigned to a contact. A list showing the hotkeys (2-9 only) and names of the contacts is shown when you select *Modify*. Select a hotkey that has a contact name displayed next to it and press the "Select" key to assign that hotkey to another contact. The list of contacts is displayed. Select a contact and press the "Select" key to assign the hotkey to that contact.
- **View:** Select "View" and press the "Select" key to view the phone

- number of the contact to which the hotkey has been assigned.
- **Delete:** Select “Delete” to delete a contact assigned to a hotkey.

NOTE: The speed dial details are saved into the Flash memory. Hence, they do not get erased when you remove the battery.

Making an Emergency call

You can make an emergency call to a number that has been previously set in the SOS numbers setting. You can save up to three emergency numbers.

To make an emergency call:

Press and hold the “Volume increase” key and the “Volume decrease” key simultaneously for a minimum time of three seconds.

The first SOS number is dialed. If the call is answered, the call gets established and you can have a voice conversation with the called party.

One of the following may take place when a call does not get established:

1. If the call remains unanswered by the called party, the second SOS number is dialed. If the call is answered, the call gets established and you can have a voice conversation with the called party.

If the call remains unanswered, the third SOS number is dialed. If the call is answered, the call gets established and you can have a voice conversation with the called party.

If the call to the third number remains unanswered, the emergency call operation is cancelled. Repeat the same procedure to initiate the emergency call again.

2. If the GSM carrier service for the currently inserted SIM card is unable to establish a call, then the second SIM card is activated automatically. PWG-600 tries to make an outgoing call to the first SOS number through the GSM carrier service of the second SIM card.

If the call is answered, the call gets established and you can have a voice conversation with the called party.

If the GSM carrier service is unable to establish the call, the emergency call operation is cancelled. Repeat the same procedure to initiate the emergency call again.

Answering or rejecting an incoming call

Press the “Accept” key to answer an incoming call OR press the “Reject” to reject an incoming call.

Other functions during a call

Call Waiting (VoIP Call Only)

You can answer a VOIP call while you have another call in progress if you have activated the *Call Waiting* function.

To answer the call waiting press the “Accept” key. The first call is put on hold.

To activate the *Call waiting* function perform the following steps:

- From the desktop, press the “Menu” key.
- Select the “Settings” option using the “Down key” and press the “Select” key. The following options are displayed when you select “Settings”:
 - General Configuration
 - WiFi Settings
 - VoIP Settings
 - GSM Settings
 - Gprs Settings
 - Bluetooth Settings
- Select “VoIP Settings” using the “Down key” and press the “Select” key. The following options are displayed when you select “VoIP”:
 - General
 - Call Control
 - Profiles
- Select “Call Control” using the “Down key” and press the “Select” key. The following options are displayed when you select “Call Control”:
 - Call Waiting
 - Call Forward
 - Call Barring
 - Caller Id
 - Dtmf
 - Prefix Dial
- Select “Call Waiting” using the “Down key” and press the “Select” key. The following options are displayed when you select “Call Waiting”:
 - Off
 - On
- Select “On” or “Off” and press the “Select” key

NOTE: All Call control options on Local UI are for VOIP (multiparty) calls. If during a VoIP call, if a contact is trying to call you, from a GSM network, the following message appears on the screen,

“CallerId Calling on GSM Drop all Calls?”

Press the “Reject” key to drop the calls. Press “Accept” key to answer the GSM call. This will also terminate the VoIP call.

During a GSM call, if a contact is trying to call you from a VoIP network, the following message appears on the screen,

“CallerId Calling on VoIP Drop all Calls?”

Press the “Reject” key to drop the calls. Press “Accept” key to answer the VoIP call. This will also terminate the GSM call.

Note: If calls (GSM/VoIP) are in progress, and there is an incoming call from another protocol, the vibrator of the PWG units gets activated automatically.

This is to indicate to the user that there is another incoming call from another protocol.

Call Forwarding (VoIP Call Only)

You can forward a (VOIP) call if you have activated the *Call Forward* function. The steps to enable *Call forward* are follows:

- From the desktop, press the “Menu” key.
- Select the “Settings” option using the “Down key” and press the “Select” key. The following options are displayed when you select “Settings”:
 - General Configuration
 - WiFi Settings
 - VoIP Settings
 - Gsm Settings
 - Gprs Settings
 - Bluetooth Settings
- Select “VoIP Settings” using the “Down key” and press the “Select” key. The following options are displayed after you selected “VoIP Settings”:
 - General
 - Call control
 - Profiles
- Select “Call Control” using the “Down key” and press the “Select” key. The following options are displayed when you select “Call Control”:
 - Call Waiting
 - Call Forward
 - Call Barring
 - Caller Id
 - Dtmf
 - Prefix Dial
- Select “Call Forward” using the “Down key” and press the “Select” key. The following options are displayed when you select “Call Forward”:
 - When Busy
 - No Reply
 - Unconditional

When Busy: When this option is selected, the call is forwarded to the

corresponding phone number if the calling party finds your PWG busy.

No Reply: When this option is selected, the call is forwarded to the corresponding phone number if an incoming call remains unanswered.

Unconditional:

- Select one of the above and press the “Select” key.

Call Barring (VoIP Call Only)

This option allows barring of (VoIP) incoming as well as outgoing calls.

The steps to activate Call barring are as follows:

- From the desktop, press the “Menu” key.
- Select the “Settings” option using the “Down key” and press the “Select” key. The following options are displayed when you select “Settings”:
 - General Configuration
 - WiFi Settings
 - VoIP Settings
 - Gsm Settings
 - Gprs Settings
 - Bluetooth Settings
- Select “VoIP Settings” using the “Down key” and press the “Select” key. The following options are displayed when you select “VoIP Settings”:
 - General
 - Call Control
 - Profiles
- Select “Call Control” using the “Down key” and press the “Select” key. The following options are displayed when you select “Call Control”:
 - Call Waiting
 - Call Forward
 - Call Barring
 - Caller Id
 - Dtmf
 - Prefix Dial
- Select “Call Barring” using the “Down key” and press the “Select” key. The following options are displayed when you select “Call Barring”:
 - Select “Incoming” and press the “Select” key and the PWG will bar all incoming VoIP calls
 - Select “Outgoing” and press the “Select” key and the PWG will bar all outgoing VoIP calls
- Select one of the above and press the “Select” key.

Caller Id (VoIP Call Only)

This option allows you to activate the (VOIP) *Caller Id* facility.

The steps to enable the *Caller Id* are as follows:

- From the desktop, press the “Menu” key.
- Select the “Settings” option using the “Down key” and press the “Select” key. The following options are displayed when you select “Settings”:
 - General Configuration
 - WiFi Settings
 - VoIP Settings
 - Gsm Settings
 - Gprs Settings
 - Bluetooth Settings
- Select “VoIP Settings” using the “Down key” and press the “Select” key. The following options are displayed when you select “VoIP Settings”:
 - General
 - Call Control
 - Profiles
- Select “Call Control” using the “Down key” and press the “Select” key. The following options are displayed when you select “Call Control”:
 - Call Waiting
 - Call Forward
 - Call Barring
 - Caller Id
 - Dtmf
 - Prefix Dial
- Select “*Caller Id*” using the “Down key” and press the “Select” key. The following options are displayed when you select “*Caller Id*”:
 - Disable
 - Enable
- Select “Disable” and press the “Select” key to disable the *Caller Id* facility.
- Select “Enable” and press the “Select” key to enable the *Caller Id* facility.

Send DTMF tone

You can send a DTMF tone using the Alpha-numeric keys during call progress.

- Enter the number using the Alpha-numeric keys from the keypad and press the accept key of PWG-600.
- To delete the number entered press the “Back” key. The character to the left of the cursor is deleted when you press the “Back” key. After all the characters are deleted, press the “Back” key to go back to the call list.
- Answer a call

Reject a call

Select the contact or the number whose call you want to reject from the call list and press the reject key. During the incoming call alert (hearing of the ring tone) press the Reject key to reject a call.

Put a call on hold

During a call you can put a caller on hold by pressing the “Hold” key. To cancel “Hold” feature, press the “Retrieve” key.

Have a Conference

You can have a conference call using PWG-600. The calls that were put on hold get added to the current conversation. The steps to add a caller to the current conversation are as follows:

- Press the “Hold” key. The following options are displayed when you press the “Hold” key:
 - Hold
 - Conference (*Conference option is only for calls on GSM*)
 - Transfer (*Transfer option is only for calls on VOIP*)
 - End Call
- Select “Conference” and press the “Select” key.

Note: Transfer option is only for calls on VOIP

Ending a call

During a call conversation, press the “drop call” key to end the call.

Automatic key lock


You can lock the keypads to prevent the keys from being pressed accidentally, for example, when your phone is in a bag or in the pocket.


To activate automatic key lock feature if it is not yet enabled, do the following:

- From the desktop, press the “Menu” key.
- Select “Settings” using the “Down” key and press the “Select” key.
- Select “General Configuration” and press the “Select” key.
- Navigate to “Keypad Lock” and press the “Select” key.
- Choose the desired settings using the “Up” or “Down” key and press the “Select” key to activate the automatic key lock.

Note: Select “Disable” to disable automatic key lock feature.

Manual key lock

To manually lock the keypads, press the “Menu” key and then press the “” immediately.

If the keypad is being locked, press the “Menu” key and then press the “” immediately unlock the keypad.

Power saving

You can set power saving mode in the PWG-600. In power saving mode the handset consumes less power. To activate power saving mode:

- From the desktop, press the “Menu” key.
- Select “Settings” using the “Down key” and press the “Select” key.

- Select “General Configuration” and press “Select” key.
 - Select “Powersaving” using the “Down” key and press the “Select” key. The following options are then displayed.
 - Enable/Disable
Select “Enable” and press the “Select” key to activate power saving mode. Selecting “Disable” disables the power saving mode.
- Note: For maximum power consumption, please turn off WiFi if not needed.*
- Select “LCD Backlight” using the “Down” key and press the “Select” key. The following options are then displayed.
 - “On”: Select this option to turn on the LCD backlight when the unit goes to power saving mode.
 - “Off”: Select this option to turn off the LCD backlight when the unit goes to power saving mode.
 - Select “Brightness” to adjust the LCD backlight brightness using the “Down” key and press the “Select” key. There are 3 levels of brightness, level one being the dimmest while level 3 the brightest. Select the required LCD backlight brightness required and press the “Select” key.

Note: For maximum power consumption, please turn off WiFi if not needed.

Making Balance Enquiry

Enter *212# and press the “Accept” key to find out the balance talk time. This is the talk time that is remaining in your GSM account.

Note: This feature is operator dependent and the numbers may differ from the above example. Please consult your GSM operator manual on how to make balance enquiry via SMS.

Connecting a wired headset

Connect a wired headset to the WHS (Wired Headset) terminal on the PWG-600 handset. This is shown on page **Error! Bookmark not defined.** You can answer an incoming call from a WHS if no Bluetooth enabled headset is paired with PWG-600.

Setting speaker phone volume

You can set the volume of the speaker to a desired level.

To set the volume of the speaker:

- From the desktop, press the “Menu” key.
- Select “Settings” using the “Down key” and press the “Select” key.
- Select “VoIP Settings” and press the “Select” key.
- Select “General” and press the “Select” key.
- Select “Speaker Volume” using the “Down key” and press the “Select” key. Ten volume levels are displayed ranging from Level 1 to Level 10.
- Select a volume level and press the “Select” key.

Setting Microphone volume

To set the volume of the microphone:

- From the desktop, press the “Menu” key.
- Select “Settings” using the “Down key” and press the “Select” key.
- Select “VoIP Settings” and press the “Select” key.
- Select “General” and press the “Select” key.
- Select “Mic Volume” using the “Down key” and press the “Select” key. Eight volume levels are provided ranging from Level 1 to Level 8.
- Select a volume level and press the “Select” key.

Setting the LCD Sleep Interval

This menu allows you to set the time interval for which the LCD display remains ON or OFF. To set the LCD sleep interval:

- From the desktop, press the “Menu” key.
- Select “Settings” using the “Down key” and press the “Select” key.
- Select “General Configuration” and press the “Select” key.
- Select “LCD sleep interval” using the “Down key” and press the “Select” key. Time intervals are provided from 20 seconds to 160 seconds.
- Select a time interval from the list and press the “Select” key.

Turning on the Keypad Light

You can turn on or turn off the keypad light by performing the following steps:

- From the desktop, press the “Menu” key.
- Select “Settings” using the “Down key” and press the “Select” key.
- Select “General Configuration” and press the “Select” key.
- Select “Keypad Light” using the “Down key” and press the “Select” key. Two options are displayed.
 - Off
 - ON
- Select “Off ” and press the “Select” key to turn off the Keypad Light.
- Select “ON” and press the “Select” key to turn on the Keypad Light.

Setting the date and the time

You can set the time and the date. PWG-600 displays the date and time on the screen after the LCD sleep interval if the power on mode is set. If the power on mode is set as OFF, the screen remains blank after the LCD sleep interval until PWG-600 remains idle.

Setting the time

The steps to set time are as follows:

- From the desktop, press the “Calendar” key of PWG-600.
- Select “Settings” using the “Select” key. The following submenus appear:
 - Set time & date
 - Set alarm

- Select “Set time & date” and press the “Select” key.
 - Enter the hours and press the “Up” key if only one digit is being entered in this field
 - Enter the minutes and press the “Up” key if only one digit is being entered in this field
 - Enter the seconds and press the “Up” key if only one digit is being entered in this field
 - Select “AM” or “PM” using the “Up” or “Down” key and press the “Select” key

Note: The time shown is in 12 hour time format

Setting the date

The steps to set the date are as follows:

- From the desktop press the “Calendar” key of PWG-600.
- Select “Settings” using the “Select” key. The following submenus appear:
 - Set time & date
 - Set alarm
- Select “Set time & date” using the “Down key” and then press the “Select” key.
 - Navigate to the date column by using the “Down” key
 - Enter the Day number and press the “Up” key if only one digit is being entered in this field
 - Enter the Month number and press the “Up” key if only one digit is being entered in this field
 - Enter the Year number and press the “Up” key
 - Press the “Select” key to save the date

Setting LCD backlight

If PWG-600 is idle, the LCD light does not turn On. The LCD backlight turns “On” during an incoming call and on any key press. You can turn the LCD backlight to “Off” or “On” by performing the following steps:

- From the desktop, press the “Menu” key.
- Select “Settings” using the “Down key” and press the “Select” key.
- Select “General Configuration” and press the “Select” key.
- Select “LCD Sleep mode” using the “Down key” and press the “Select” key. Two options are displayed.
 - Enabled
 - Disabled
- Select “Enabled” and press the “Select” key to turn off the LCD backlight when PWG-600 is inactive.
- Select “Disabled” and press the “Select” key to turn on the backlight.

Note: Turning on the LCD backlight continuously will consume more power

Alarm Clock

You can set an alarm using PWG-600.

The steps to set an alarm are as follows:

- From the desktop, press the “Calendar” key.
- Select “Settings” using the “Down key” and press the “Select” key.
- Select “Set Alarm” and press the “Select” key.
- If the Alarm Clock has previously been set, a menu with two options will be displayed.
 - Turn Off
 - Select this option and press the “Select” key to turn off the alarm clock.
 - Adjust Time
 - Select this option and press the “Select” key to adjust the alarm clock time.
- Select “Alarm Clock” using the “Down key” and press the “Select” key. A screen titled “Alarm Clock” is displayed showing the previously set alarm time.
- Press the “Select” key. The following sub menus are displayed when you press the “Select” key.
 - **Adjust:** Select “Adjust” and press the “Select” key to adjust the alarm time. A screen titled “Adjust Time” appears when you select “Adjust”.
 - Key in the alarm in hours (*and press the “Down” key if only one digit is being entered in the hours field*).
 - Key in the alarm in minutes (*and press the “Down” key if only one digit is being entered in the hours field*).
 - Select “AM” or “PM” and press the “Select” key.
 - Press the “Menu/Select” key to set the alarm clock.
 - **Off:** Select “Off” and press the “Select” key to turn off the alarm.

Restore Factory Defaults

You can reset some of the menu settings to their original values.

- From the desktop, press and hold the “Menu” key and reset the device.
- This restores the Factory Default values.

USING THE MENUS

Accessing a menu

- From the desktop press the “Menu” key will show the PWG-600 Main Menu.
- Navigate to the required menu item and press the “Select” key to select the menu. For example, **Phonebook** and press the “Select” key to select it. If the submenu contains further submenus repeat this step.

List of the menus

1. Phone Book

- a. Add New Contact
- b. Search Contact
- c. Delete Contacts
 - i. Select the Contacts to be deleted and press the “Select” key to delete the Contact.
- d. Edit Contact

2. Messages

- a. Write New SMS
- b. Incoming SMS
- c. Sent SMS

3. Call Logs

- a. Missed Calls
- b. Received Calls
- c. Dialed Calls
- d. Delete Logs
 - i. All call records
 - ii. Missed Calls
 - iii. Received Calls
 - iv. Dialed Calls

4. Tones

- a. Ringtone
- b. Ring Volume
- c. Alert Type
- d. Key Beep
- e. Profiles
 - i. General
 - Ringtone
 - Standard Ring
 - Bell Ring
 - UK Tone
 - Love Story
 - Safari

- Wild Flower
 - Blue Night
 - Celebration
 - Clear Water
 - Pianist
 - Ring Volume
 - Level 1 ~ Level 5
 - Alert Type
 - Disable
 - Ringer
 - Vibrator
 - Ring + Vibr
 - Ring after Vibr
 - Key Beep
 - On
 - Off
 - Edit Name
 - Activate
- ii. Silent
 - Ringtone
 - Standard Ring
 - Bell Ring
 - UK Tone
 - Love Story
 - Safari
 - Wild Flower
 - Blue Night
 - Celebration
 - Clear Water
 - Pianist
 - Ring Volume
 - Level 1 ~ Level 5
 - Alert Type
 - Disable
 - Ringer
 - Vibrator
 - Ring + Vibr
 - Ring after Vibr
 - Key Beep
 - On
 - Off
 - Edit Name
 - Activate
- iii. Meeting
 - Ringtone
 - Standard Ring

- Bell Ring
 - UK Tone
 - Love Story
 - Safari
 - Wild Flower
 - Blue Night
 - Celebration
 - Clear Water
 - Pianist
 - Ring Volume
 - Level 1 ~ Level 5
 - Alert Type
 - Disable
 - Ringer
 - Vibrator
 - Ring + Vibr
 - Ring after Vibr
 - Key Beep
 - On
 - Off
 - Edit Name
 - Activate
- iv. Outdoor
 - Ringtone
 - Standard Ring
 - Bell Ring
 - UK Tone
 - Love Story
 - Safari
 - Wild Flower
 - Blue Night
 - Celebration
 - Clear Water
 - Pianist
 - Ring Volume
 - Level 1 ~ Level 5
 - Alert Type
 - Disable
 - Ringer
 - Vibrator
 - Ring + Vibr
 - Ring after Vibr
 - Key Beep
 - On
 - Off
 - Edit Name

- Activate
- v. Pager
 - Ringtone
 - Standard Ring
 - Bell Ring
 - UK Tone
 - Love Story
 - Safari
 - Wild Flower
 - Blue Night
 - Celebration
 - Clear Water
 - Pianist
 - Ring Volume
 - Level 1 ~ Level 5
 - Alert Type
 - Disable
 - Ringer
 - Vibrator
 - Ring + Vibr
 - Ring after Vibr
 - Key Beep
 - On
 - Off
 - Edit Name
 - Activate

5. Settings

- a) General Configuration
 - i. Out Going Call
 - GSM
 - VoIP
 - Auto
 - ii. Powersaving
 - Enable/Disable
 - Disable
 - Enable
 - LCD Backlight
 - On
 - Off
 - Brightness
 - Level 1 ~ Level 3
 - iii. LCD sleep interval
 - 20 sec
 - 40 sec
 - 60 sec

- 80 sec
- 100 sec
- 120 sec
- 140 sec
- 160 sec
- iv. LCD sleep mode
 - Enable
 - Disable
- v. Keypad light
 - Off
 - On
- vi. Keypad lock
 - Disable
 - 1 min
 - 2 min
 - 5 min
 - 10 min
 - 15 min
- vii. Wall paper
 - Lake view
 - Sweet home
 - Sunrise
 - Hills
 - Clear Beach
 - Love Birds
 - Princess
 - Sunset
- viii. Switch Off Tone
 - Off
 - On

b) WiFi Settings

- i. General
 - WiFi on/off
 - Off
 - On
 - WiFi Connectivity
 - Automatic
 - Manual
- ii. Profiles
 - Manual
 - Configuration
 - Operating mode
 - Ad-HOC
 - Infrastructure

- Channel
 - ch 1 ~ ch 11
- User Name
- Password
- ESSID
- Auth. Protocol
 - Off
 - SIM1 based
 - SIM2 based
 - EAP-MD5
 - EAP-MSCHAPv2
- Encryption
 - Protocol
 - Disable
 - 64bit Open
 - 128bit Open
 - 64bit WEP
 - 128bit WEP
 - Webkey
 - Key #1 ~ Key #4
- Advanced
 - Power Saving
 - Off
 - On
 - RTS/CTS Threshold
 - Frag Threshold
 - Transfer Rate
 - Auto
 - 1 Mbps
 - 2 Mbps
 - 5.5 Mbps
 - 11 Mbps
 - Use DHCP
 - Yes
 - No
- Default
 - Configuration
 - Operating mode
 - Ad-HOC
 - Infrastructure
 - Channel
 - ch 1 ~ ch 11
 - User Name
 - Password
 - ESSID
 - Auth. Protocol
 - Off

- SIM1 based
 - SIM2 based
 - EAP-MD5
 - EAP-MSCHAPv2
 - Encryption
 - Protocol
 - Disable
 - 64bit Open
 - 128bit Open
 - 64bit WEP
 - 128bit WEP
 - Webkey
 - Key #1 ~ Key #4
 - Advanced
 - Power Saving
 - Off
 - On
 - RTS/CTS Threshold
 - Frag Threshold
 - Transfer Rate
 - Auto
 - 1 Mbps
 - 2 Mbps
 - 5.5 Mbps
 - 11 Mbps
 - Use DHCP
 - Yes
 - No
 - IP Addr
 - Subnet Mask
 - Default GTWY
 - Primary DNS
 - Alternate DNS
- Default
 - Configuration
 - Operating mode
 - Ad-HOC
 - Infrastructure
 - Channel
 - ch 1 ~ ch 11
 - User Name
 - Password
 - ESSID
 - Auth. Protocol
 - Off
 - SIM1 based
 - SIM2 based

- EAP-MD5
 - EAP-MSCHAPv2
 - Encryption
 - Protocol
 - Disable
 - 64bit Open
 - 128bit Open
 - 64bit WEP
 - 128bit WEP
 - Webkey
 - Key #1 ~ Key #4
 - Advanced
 - Power Saving
 - Off
 - On
 - RTS/CTS Threshold
 - Frag Threshold
 - Transfer Rate
 - Auto
 - 1 Mbps
 - 2 Mbps
 - 5.5 Mbps
 - 11 Mbps
 - Use DHCP
 - Yes
 - No
 - IP Addr
 - Subnet Mask
 - Default GTWY
 - Primary DNS
 - Alternate DNS
- Default
 - Configuration
 - Operating mode
 - Ad-HOC
 - Infrastructure
 - Channel
 - ch 1 ~ ch 11
 - User Name
 - Password
 - ESSID
 - Auth. Protocol
 - Off
 - SIM1 based
 - SIM2 based
 - EAP-MD5
 - EAP-MSCHAPv2

- Encryption
 - Protocol
 - Disable
 - 64bit Open
 - 128bit Open
 - 64bit WEP
 - 128bit WEP
 - Webkey
 - Key #1 ~ Key #4
- Advanced
 - Power Saving
 - Off
 - On
 - RTS/CTS Threshold
 - Frag Threshold
 - Transfer Rate
 - Auto
 - 1 Mbps
 - 2 Mbps
 - 5.5 Mbps
 - 11 Mbps
 - Use DHCP
 - Yes
 - No
 - IP Addr
 - Subnet Mask
 - Default GTWY
 - Primary DNS
 - Alternate DNS
- Default
 - Configuration
 - Operating mode
 - Ad-HOC
 - Infrastructure
 - Channel
 - ch 1 ~ ch 11
 - User Name
 - Password
 - ESSID
 - Auth. Protocol
 - Off
 - SIM1 based
 - SIM2 based
 - EAP-MD5
 - EAP-MSCHAPv2
 - Encryption
 - Protocol

- Disable
 - 64bit Open
 - 128bit Open
 - 64bit WEP
 - 128bit WEP
 - Webkey
 - Key #1 ~ Key #4
 - Advanced
 - Power Saving
 - Off
 - On
 - RTS/CTS Threshold
 - Frag Threshold
 - Transfer Rate
 - Auto
 - 1 Mbps
 - 2 Mbps
 - 5.5 Mbps
 - 11 Mbps
 - Use DHCP
 - Yes
 - No
 - IP Addr
 - Subnet Mask
 - Default GTWY
 - Primary DNS
 - Alternate DNS
- c) Voip Settings
 - i. General
 - Voip on/off
 - Off
 - On
 - Stun Server
 - Speaker Volume
 - Level 1 ~ Level 10
 - Mic Volume
 - Level 1 ~ Level 10
 - Preferred Codec
 - GSM
 - aLaw
 - uLaw
 - G726
 - G729
 - G723.1
 - ii. Call Control

- Call Waiting
 - Off
 - On
 - Call Forward
 - When busy
 - Off
 - On
 - No reply
 - Off
 - On
 - Unconditional
 - Off
 - On
 - Call Barring
 - Incoming
 - Off
 - On
 - Outgoing
 - Off
 - On
 - Caller Id
 - Disable
 - Enable
 - Dtmf
 - Inband
 - Outband
 - Prefix Dial
 - Disable
 - Enable
- iii. Profiles
- Default0 ~ Default9
 - User Number
 - Authorization name
 - Password
 - Registrar
 - Domain Name
 - Outbound Proxy
 - Mail Addr
 - Edit Profile Name
 - Activate
 - Restore Defaults
- d) Gsm Settings
- i. General
 - GSM Service
 - Off

- On
 - Sim Switch
 - SIM 1
 - SIM 2
 - Speaker Volume
 - Level 1 ~ Level 10
 - Mic Volume
 - Level 1 ~ Level 10
 - Pinlock SIM
 - Change SIM Pin
- e) Gprs Settings
- i. Access Pt Name
 - ii. IP Address
- f) Bluetooth Settings
- i. Headsets
 - Find headsets
 - Paired Headsets

6. Status

- a. IMEI Number
- b. Bluetooth Address
- c. MAC Address
- d. Version
- e. WiFi Status
- f. SSID
- g. Channel
- h. Tx Rate
- i. Signal Strength
- j. Link Quality
- k. MAC

MENU FUNCTIONS

Phonebook

You can edit the details of the contacts present in your phone book with this option.

The steps to edit phone records are as follows:

- From the desktop, press the “Menu” key.

Note: The Phonebook can also be accessed using the hotkey. From the desktop, press the “P.book” key.

- Using the “Navigation” key, navigate to the “Phonebook” menu and press the “Select” key.
- Select “Edit Contact” and press the “Select” key
- Using the “Up/Down” key, navigate to the contact that you want to edit and press the “Select” key.

Note: To search for a contact, use the key pads to enter the first character of the said contact and the cursor will jump, highlighting the first available contact with that character.

- Enter the Contact Name and press the “Next” button.

Note: If you made a mistake, press the “Clear” button. Holding down the “Clear” button for a few seconds also deletes all characters in the entry box.

- Enter the Phone Number and press the “Next” button to save changes.

The following options are shown when you press the “Select” key.

- Add New Contact
- Search Contact
- Delete Contacts
- Edit Contact

1. Select “Search” and press the “Select” key.
A contact list screen is displayed. Key in the first letter of the saved contact with the phone number. The alphabet ‘ABC’ are displayed at the bottom. This indicates that the alphabet keys can be used to search the contact. To enter numbers, press ‘#’ until the “ABC” is changed to “123” and vice versa.
2. After the contact has been found, press the “Options” key or press the “Back” key to go back to the phonebook list. The following options are available:
 - a. Edit Contact
 - b. Delete Contact
 - c. Assign Speeddial
 - d. Unassign Speeddial
3. Select “Edit” and press the “Select” key.
4. Enter the name and press “Next” key.
5. Enter the phone number and press “Next” key to save the contact.

Messages

Using the SMS service (Short Message Service) you can send and receive text messages.

Writing and sending a message

To send a message:

1. From the desktop, press the “Menu” key.
2. Navigate to the “Messages” menu icon using the “Navigational” keys and press the “Select” key.
3. The following submenus are displayed when you selected “Messages”
 - a. Write New SMS
 - b. Incoming SMS
 - c. Sent SMS
4. Select “Write New SMS” and press the “Select” key.
5. Type the SMS using the key pad and press the “Next” key after you’ve completed the SMS.

Note: Below are the keys that could be useful during SMS operation.

- *The maximum number of characters per SMS is set at 160 and the remaining characters will be shown as you type the SMS.*
- *Press and hold down the “Clear” key for a few seconds to clear off any characters on the screen.*
- *Press the “#” key to toggle the big, small or number alphabets*
- *Press the “*” key to toggle extra characters like comma, multiplication symbols, dollar sign, percentage sign etc.*

6. Key in the phone number of the recipient and press the "Option" key.
7. Select "Send Message" and press the "Select" key or select the "Contacts" to send the SMS using the existing phonebook contacts.
8. A confirmation screen will be shown. Press the "Send" key to confirm sending the SMS.
9. A message will be shown on the screen to indicate that the message had been sent.

Viewing the details of the received messages

When you receive a message the desktop will show "New message: 1" to indicate that a new message has been received.

To view the details of a received message:

1. From the desktop, press the "Show" key OR select "Menu" key and then navigate to the "Messages" menu and press the "Select" key.
2. The following submenus are displayed when you select "Messages".
 - a. Write New SMS
 - b. Incoming SMS
 - c. Sent SMS
3. Select "Incoming SMS" and press the "Select" key. A list of contact names (for messages received from persons whose numbers are added in the contact list) and numbers (for messages received from persons whose numbers are not present in the contact list) is shown.
4. Select a name or number and press the "Read" key. The with the following format will be shown
 - a. Sender
 - b. Date
 - c. SMS Contents
5. Press the "Options" key and a menu with the following options will displayed.
 - **Delete Message**
 - a. Select "Delete Message" and press the "Select" key. A "Confirm Deletion" confirmation message will be shown.
 - b. Press the "Ok" key to confirm deletion or press the "Cancel" key to keep the message.
 - **Forward Message**
 - a. Select "Forward Message" and press the "Select" key. The SMS message will be shown and you can edit the contents of the SMS.
 - b. Press the "Send" key and a screen to enter the phone number will be shown. Enter the recipient's number and press the "Options" key.
 - c. Press the "Send Message" key and then press the "Select" key.
 - d. A "Confirm Sending" confirmation message will be shown. Press

the “Send” key to confirm sending of the message or press the “Clear” key to cancel the message sending.

- **Reply**
 - a. Select “Reply” and press the “Select” key. A blank SMS screen will be shown.
 - b. Key in the SMS and press the “Send” key to send a reply to the sender.

Note: The difference between “Forward Message” and the “Reply” message is that the “Forward Message” will re-use the contents of the message whereas the “Reply” message will start from a fresh new screen.

- **Save Number**
 - a. Select “Save Number” and press the “Select” key. A blank Contact Name screen will be shown.
 - b. Key in the Contact Name and press the “Next” key
 - c. Key in the Contact Number and press the “Next” key to add the contact to the Contact list.

Viewing details of sent items

1. From the desktop, press the “Menu” key.
2. Using the navigational keys navigate and select “Messages” and press the “Select” key. The following submenus are displayed when you selected “Messages” menu.
 - a. Write New SMS
 - b. Incoming SMS
 - c. Sent SMS
3. Select “Sent SMS” and press the “Read” key.
4. Press the “Options” key for more options or press the “Back” key to go back to the “Sent SMS” lists. The following submenus are displayed when you selected the “Options” submenu.

- **Forward Message:**
 - a. Select “Forward” and press the “Select” key to forward the message.

Note: The message to be forwarded will be shown and you can edit the contents of the message prior sending.

- b. Once editing is completed, press the “Send” key.
- c. Enter the number of the person you want to forward the message to or press the “Options” for more options.
- d. Select the option “Send Message” and press the “Select” key. A confirmation screen will be shown and press the “Send” key to send

the SMS if the phone number is correct.

- **Delete Message:**
 - a. Select “Delete Message” and press the “Select” key to delete the message. A delete confirmation screen will be shown.
 - b. Press “Ok” to confirm deletion.

Call Logs

This option provides you with a list of the missed calls, received calls, and dialed calls.

- From the desktop, press the “Menu” key.
- Navigate to the “Call log” option using the navigational keys and press the “Select” key.

This option allows you to check missed calls, received calls, and dialed calls.

- The following options appear when you selected the “Call log” function:
 - *Missed calls*
 - Select “Missed calls” and press the “Select” key.
A list of phone numbers that have not been attended appears. You can save up to 20 records depending upon the SIM card memory. If there are none, then a message is displayed indicating that there are no missed calls. Press the ‘Accept’ key to call a number. OR
 - Select a phone number using the up or down keys and press the “Select” key. The following options appear when you select a phone number.
 - **Call:** Select “Dial” using arrow keys and press the “Select” key to call the selected phone number.
 - **Delete:** Select “Delete” using arrow keys and press the “Select” key to delete the selected phone number.
 - **Save:** Select “Save” using arrow keys and press the “Select” key to save the selected phone number in the Phonebook.
 - *Received Calls*
 - Select “Received Calls” and press the “Select” key.
A list of phone numbers that have been received and answered appears. You can save up to 20 records depending upon the SIM card memory. If there are none, then a message “List empty” is displayed indicating that there are no received calls. Press the ‘Accept’ key to call a number. OR
 - Select a phone number using the up or down keys and press

the “Options” key. The following options appear when you select a phone number.

- **Call Back:** Select “Call Back” using arrow keys and press the “Dial” key to call the selected phone number.
- **Save:** Select “Save” and press the “Save” key. Enter the Contact Name and press the “Next” key. Enter the Contact Number and press the “Next” key to save the number to your contact list.
- **Send SMS:** Select “Send SMS” using arrow keys and press the “Send” key to send SMS. Enter the SMS message to be sent and press the “Send” key.

○ *Dialed Calls*

- Select “Dialed Calls” and press the “Select” key.
A list of phone numbers that have been successfully dialed appears. You can save up to 20 records depending upon the SIM card memory. If there are none, then a message is displayed indicating that there are no dialed calls. Press the ‘Accept’ key to call a number. OR
- Select a phone number using the up or down keys and press the “Options” key. The following options appear when you select a phone number.
- **Call Back:** Select “Call Back” using arrow keys and press the “Dial” key to call the selected phone number.
- **Save:** Select “Save” and press the “Save” key. Enter the Contact Name and press the “Next” key. Enter the Contact Number and press the “Next” key to save the number to your contact list.
- **Send SMS:** Select “Send SMS” using arrow keys and press the “Send” key to send SMS. Enter the SMS message to be sent and press the “Send” key.

○ *Delete Logs*

- Select “Delete Logs” and press the “Select” key. A list of options will be displayed when the “Select” key is pressed.
- **All call records:** Select “All” and press the “Select” key to delete all the numbers present in the Call Logs. A delete confirmation message will be displayed. Press “Ok” key to confirm deletion OR press the “Cancel” key to abort cancellation.
- **Missed Calls:** Select “Missed Calls” and press the “Select” key to delete the missed call list. A delete confirmation message will be displayed. Press “Ok” key to confirm deletion OR press the “Cancel” key to abort cancellation.
- **Received Calls:** Select “Dialed” and press the “Select” key to delete the dialed number list.
- **Dialed Calls:** Select “Received” and press the “Select” key

to delete the received number list.

Note: A delete confirmation screen will be displayed when the Delete Logs submenu is chosen. Press “Ok” key to confirm deletion or press the “Cancel” key to abort deletion.

The call log details are saved to the local memory and will be erased if the battery is removed.

TONES

Setting ring tones:

You can set a ring tone to PWG-600 using this option.

The steps to set a ring tone are as follows:

1. From the desktop, press the “Menu” key.
2. Navigate to the “Tones” menu using the navigational keys and press the “Select” key.
3. The “Tones” submenu will be displayed with the following options:
 - **Ring tone:** Select “Ring tone” and press the “Select” key. The following ring tones are displayed.
 - Standard Ring
 - Bell Ring
 - UK Tone
 - Love Story
 - Safari
 - Wild Flower
 - Blue Night
 - Celebration
 - Clear Water
 - Pianist

Select the desired ring tone using the “Up” or “Down” key and press the “Select” key to activate the ring tone.

- **Ring Volume:** Select “Ring Volume” and press the “Select” key. The following ring volumes are displayed.
 - Level 1 ~ 5

Select the desired ring volume using the “Up” or “Down” key and press the “Select” key to activate the ring volume.
- **Alert Type:** Select “Alert Type” and press the “Select” key. The following alert types are displayed.
 - **Disable:** Select “Disable” and press the “Select” key to disable the ringer and vibrator.
 - **Ringer:** Select “Ringer” and press the “Select” key to enable the ringer. A selected ring tone is played whenever an incoming call is received.
 - **Vibrator:** Select “Vibrator” and press the “Select” key to

enable the vibrator. The PWG-600 vibrates whenever an incoming call is received.

- **Ring + Vibr:** Select “Ring + Vibr” and press the “Select” key to enable both the ringer and vibrator. The PWG-600 rings and vibrates whenever an incoming call is received.
- **Ring after Vibr:** Select “Ring after Vibr” and press the “Select” key. The PWG-600 rings after the vibrator turns on whenever an incoming call is received.

Select the desired alert type using the “Up” or “Down” key and press the “Select” key to activate the alert type.

- **Key Beep:** Select “On” to activate the key beeping function whenever a key is press or “Off” to deactivate this function.
 - Off
 - On
- **Profiles:** Select “Profile” and press the “Select” key. The following profiles are displayed.
 - General
 - Silent
 - Meeting
 - Outdoor
 - Pager

Select the desired profiles using the “Up” or “Down” key and press the “Select”. Then navigate to the “Activate” and press the “Select” key to activate the selected profile.

SETTING RING TONE PROFILES

You can activate, personalize and edit a ring tone profile as follows:

1. From the desktop, press the “Menu” key.
2. Using the navigational keys select “Tones”, then press the “Select” key and the following options appear.
 - Ring tone
 - Ring Volume
 - Alert Type
 - Key Beep
 - Profiles
3. Select “Profiles”, then press the “Select” key and the following options appear:
 - General
 - Silent
 - Meeting
 - Outdoor
 - Pager

4. Select the profile that you want to activate or personalize and press the “Select” key. The following submenus are displayed when a profile is selected.

a. **Ring tone:** Select “Ring tone” and press the “Select” key to personalize the ring tone. The following options are displayed:

- Standard Ring
- Bell Ring
- UK Tone
- Love Story
- Safari
- Wild Flower
- Blue Night
- Celebration
- Clear Water
- Pianist

Select the desired ring tone using the “Up” or “Down” key and press the “Select” key to activate the ring tone.

b. **Ring Volume:** Select “Ring Volume” and press the “Select” key. The following ring volumes are displayed.

- Level 1 ~ 5

Select the desired ring volume using the “Up” or “Down” key and press the “Select” key to activate the ring volume.

c. **Alert Type:** Select “Alert Type” and press the “Select” key. The following alert types are displayed.

- **Disable:** Select “Disable” and press the “Select” key to disable the ringer and vibrator.
- **Ringer:** Select “Ringer” and press the “Select” key to enable the ringer. A selected ring tone is played whenever an incoming call is received.
- **Vibrator:** Select “Vibrator” and press the “Select” key to enable the vibrator. The PWG-600 vibrates whenever an incoming call is received.
- **Ring + Vibr:** Select “Ring + Vibr” and press the “Select” key to enable both the ringer and vibrator. The PWG-600 rings and vibrates whenever an incoming call is received.
- **Ring after Vibr:** Select “Ring after Vibr” and press the “Select” key. The PWG-600 rings after the vibrator turns on whenever an incoming call is received.

Select the desired alert type using the “Up” or “Down” key and press the “Select” key to activate the alert type.

- d. **Key Beep:** Select “On” to activate the key beeping function whenever a key is press or “Off” to deactivate this function.
 - o Off
 - o On

- e. **Edit Name:** Select “Edit Name” and press the “Select” key to change the name of a profile. Key in the desired profile name and press the “Select” key.

- f. **Activate:** Select “Activate” and press the “Select” key to activate this profile.

SETTINGS

The “Settings” menu allows you to configure the phone features. The “Settings” menu can be access from the desktop by pressing the “Menu” key and using the navigational keys to select “Settings” and press the “Select” key.

The “Settings” screen is displayed as shown:

- o General Configuration
- o WiFi Settings
- o VoIP Settings
- o GSM Settings
- o GPRS Settings
- o Bluetooth Settings

General Configuration

By selecting the “General Configuration” sub menu the following menus are displayed:

- o Outgoing Call
- o Powersaving
- o LCD sleep interval
- o LCD sleep mode
- o Keypad light
- o Keypad lock
- o Wallpaper
- o Switchoff tone

WiFi Settings

You can set WiFi parameters using this option.

1. From the desktop, press the “Menu” key and using the navigational keys select “Settings” and press the “Select” key. The “Settings” screen is displayed as shown:
 - o General Configuration
 - o WiFi Settings

- VoIP Settings
 - GSM Settings
 - GPRS Settings
 - Bluetooth Settings
2. Using the navigational keys, select “WiFi Settings” and press the “Select” key. Two options are then displayed.
- a. **General:** Selecting this option displays two submenus.
 - **WiFi On/Off:** Select this menu and press the “Select” key. The following options are displayed.
 - **On:** Select “On” and press the “Select” key to turn WiFi On.
 - **Off:** Select “Off” and press the “Select” key to turn WiFi Off.
 - **WiFi Connectivity:** The PWG-600 is capable of scanning for WiFi access point “automatically” or “manually”. Select “WiFi connectivity” and press the “Select” key. Two options are then displayed.
 - **Automatic:** Select this option and press the “Select” key. The PWG-600 checks for WiFi access point in the vicinity and automatically connects to any available WiFi access point.
 - **Manual:** Select this option and press the “Select” key. Then press the “Select” key to start to manually scanning for access point. The PWG-600 will then scans for WiFi access point and displays a list of available access point. Select an access point and press the “Select” key to attempt to get connected to the access point.
 - b. **Profiles:** A single manual profile and three default profiles are provided. Select Profiles and press the “Select” key to set parameters. The following options appear.
 - **Manual:** You can set the parameters of manual profile if you select “Manual” and press the “Select” key. The following submenus are displayed when you selected “Manual”.
 - **Configuration:** Select “Configuration” and press the “Select” key to configure the following parameters.
 - **Operating Mode**
 - Ad-Hoc
 - Infrastructure
 - **Channel**
 - ch 1 ~ ch 11
 - **User Name:** For authentication purposes
 - **Password:** For authentication purposes
 - **ESSID:** Enter the ESSID (Extended Service Set Identification). This is the ID that you must

enter and shall match the ID on the designated access point that you want to connect to on the WiFi network.

- **Auth. Protocol**
 - Off
 - SIM1 based
 - SIM2 based
 - EAP-MD5
 - EAP-MSCHAPv2
- **Encryption:** Select “Encryption” and press the “Select” key to configure the following parameters.
 - **Protocol:** Select any of the following options and press the “Select” key.
 - Disable
 - 64 bit Open
 - 128 bit Open
 - 64 bit WEP
 - 128 bit WEP
 - **WEP Key:** Select this option, key in the WEP encryption key and press the “Select” key.
 - Key #1 ~ Key #4

Note: Please consult your network administrator for more information on setting up the network security of your PWG-600 device.

- **Advanced:** Select “Advanced” and press the “Select” key to configure the following parameters.
 - **Power Saving:**
 - **On:** Turning this option to “On” enables power saving mode and prolongs the battery consumption during WiFi operation.
 - **Off:** Turns off power saving mode during WiFi operation.

Note: Setting the power saving to “On” will enable power saving mode only if the access point supports power saving mode.

- **RTS/CTS Threshold:** Select this option and key in the RTS/CTS threshold setting and press the “Select” key.
- **Frag Threshold:** Select this option and key in the frag threshold setting and press the “Select” key.

- **Transfer Rate:** Select this option and select the desired data transfer rate.
 - Auto
 - 1 Mbps
 - 2 Mbps
 - 5.5 Mbps
 - 11 Mbps
- **Use DHCP** (*Dynamic Host Configuration Protocol*): Select this option and then select “Yes” to set the PWG-600 to operate using server assigned IP (Internet Protocol) address **OR;**
- Select “No” to manually fixed assignment of IP address for this device on the network. If this option is selected, a list of options will be displayed:
 - **IP Addr (Address):** Select this option and key in the desired IP address for this device on the network.
 - **Subnet Mask:** Select this option and key in the desired subnet mask for this device on the network.

Note: A typical class C network will have a default “255.255.255.0” as the subnet mask.

- **Default GTWY (Gateway):** Select this option and key in the desired gateway.

Note: A gateway is typically a device on the network that has the key or access to the internet.

- **Primary DNS (Domain Name Server):** Select this option and key in the desired primary domain name server.
- **Alternate DNS:** Select this option and key in the desired alternate domain name server.

Note: All devices connected to the IP network requires a uniquely identified IP address to registers itself onto the network.

Note: Please consult your network administrator for more

information on setting up the PWG-600 device on your network.

- A total of three WiFi profiles are available with the profile name **default** and can be set. The settings are discussed in “Setting WiFi parameters”
- **Edit Profile Name:** Select “Edit Profile Name” to change the profile name.
- **Activate:** Select “Activate” to activate a “Default” profile.

Setting VoIP profiles

You can set parameters for using the VoIP profile using this option.

1. From the desktop, press the “Menu” key and using the navigational keys select “Settings” and press the “Select” key.
2. Select “VoIP Settings” and press the “Select” key. The following submenus appear when you select “VoIP Settings”.

a. **General:** Selecting this option displays the following submenus:

- **VoIP On/Off:** Turns VoIP On or Off
- **Stun Server:** Enter the address of the STUN server
- **Speaker Volume:** Select “Speaker Volume” and press the “Select” key. Select a volume level and press the “Select” key. Ten volume levels are provided ranging from Level 1 to Level 10. Select a speaker volume level and press the “Select” key.
- **MIC Volume:** Select “Microphone Volume” and press the “Select” key. Ten volume levels are provided ranging from Level 1 to Level 10. Select a microphone volume level and press the “Select” key.
- **Preferred Codec:** The following codecs are available.
 - GSM
 - a Law
 - μ Law
 - G726
 - G729
 - G723.1

Select a codec and press the “Select” key.

b. **Call Control:** Selecting this option displays the following submenus:

- i. **Call Waiting:** Select “Call waiting” if you want to activate call waiting while another call is in progress. The following options are displayed:
 - On: Select ‘On’ to enable call waiting.
 - Off: Select ‘Off’ to disable call waiting.
- **Call Forward:** To read how to activate call forward, please see “*Error! Reference source not found.*” section.
- **Call Barring:** Select Call Barring and two options will be

shown.

- **Incoming:** Bars all incoming call when this option is set to “On”
 - **Outgoing:** Bars all outgoing call when this option is set to “On”
 - **Caller ID:** When set to “On” it shows the caller phone number.
 - **DTMF:** DTMF is short for “*Dual Tone Multi Frequency*”. Select DTMF and press “Select” key. The following submenus are displayed.
 - **Inband:** Select “Inband” if the person you are calling supports PSTN network only.
 - **Outband:** Select “Outband” if the person you are calling linked to a VoIP server.
 - **Prefix Dial:** Enable or disable prefix dialing using this option. A prefix dial number can be set after prefix dialing is enabled.
- c. Profiles:** Ten default profiles are provided. Default0~Default9. Select a default profile and press the “Select” key. The following options are displayed.
- **Default0~Default9:**
 - **User Number:** Sets the phone number of the VoIP extention and may be use for authentication purposes with the VoIP Server.
 - **Authentication Name:** Sets the authentication name for authentication purposes with the VoIP Server.
 - **Password:** Sets the password for authentication purposes with the VoIP Server.
 - **Registrar:** Sets the VoIP Server Registrar address
 - **Domain Name:** Sets the VoIP Server Domain name address
 - **Outbound Proxy:** Sets the VoIP Server outbound proxy address
 - **Mail Addr:** Sets the VoIP Server mail address
 - **Edit Profile Name:** Select this option to assign a user-friendly name to the profile.
 - **Activate:** Select “Activate” and press the “Select” key if you want to make the selected profile active.
 - **Restore Defaults:** Select this option to restore the original settings for the selected VoIP profile.

Setting GSM parameters

GSM stands for “*Global System for Mobile Communication*”. You can set parameters for using GSM as follows:

1. From the desktop, press the “Menu” key and select “Settings”. Press the “Select” key to select the “Settings” menu.
2. Select “GSM Settings” and press the “Select” key. The following submenus appear when you selected “GSM Settings”.
 - a. **GSM Service (On/Off)**: Select “On” to activate GSM service. Select “Off” to turn off GSM service.
 - b. **SIM Switch**: Two SIM cards are provided, namely, SIM 1 and SIM 2. Select the SIM card that you want to activate and press the “Select” key.

Note: Only one SIM card can be active. The inactive SIM (even though is in the phone) will not be able to make or receive calls/SMS unless it is made active.

- c. **Speaker Volume**: Select the “Speaker Volume” and press the “Select” key to set the speaker volume. Select a volume level you want and press the “Select” key. Ten volume levels are provided ranging from “Level 1” to “Level 10”. Select “Off” to turn off the speaker.
- d. **Microphone Volume**: Select “Microphone Volume” and press the “Select” key to set the microphone volume. Ten volume levels are provided ranging from “Level 1” to “Level 10”. Select a volume level you want to set and press the “Select” key.
- e. **PIN lock SIM**: Sets the PIN authentication to “On” or “Off”. When the PIN lock SIM is being turned “On”, where applicable the phone will request for PIN authentication before the phone can continue with other operations.
- f. **Change SIM PIN**: Sets the PIN authentication password and where applicable the phone will request for PIN authentication before the phone can continue with other operations.

Caution: If the incorrect PIN number is entered for more than three times, the SIM will be in a “lock” state and will need to be “unlock” using a PUK (Personal Unlock Key). The PUK number can be found on the registration details of the SIM card or alternatively you can contact your GSM service provider for the PUK details.

Setting GPRS parameters

GPRS (General Packet Radio Service) is a network service that allows your handset to be used for sending and receiving data over an Internet protocol (IP) based network. You can set parameters for using GPRS as follows.

1. From the desktop, press the “Menu” key and select “Settings”. Press the “Select” key to select “Settings” menu.
2. Select “GPRS” and press the “Select” key. The following submenus are displayed when you selected the “GPRS” menu.
 - a. **Access Point Name:** Select this option and press the “Select” key to set the name of the GPRS access point.
 - b. **IP Address:** Select this option and press the “Select” key to set the IP address of the GPRS access point.

Pairing a Bluetooth headset with PWG-600

The Bluetooth PIN is used to authenticate two Bluetooth devices (that have not previously exchanged link keys) with each other and create a trusted relationship between them. If entered by the user, it is referred to as the ‘Bluetooth Passkey’. This process of authenticating two Bluetooth devices is called pairing.

A paired Bluetooth headset can be used while making outgoing calls. Once the headset has been paired, voice is enabled on the headset only for outgoing calls. During an incoming call, a ring is heard on the paired Bluetooth headset. Press the button on the Bluetooth headset to accept the call. Press the same button to terminate the call.

The procedure to pair a Bluetooth headset with PWG-600 is as follows:

1. Put the headset in pairing mode. For example, press and hold the key of the Bluetooth headset. An intermittent display of the LED takes place.
2. From the desktop, press the “Menu” key and using the navigational keys, select “Settings” menu and then select “Bluetooth Settings”.
3. Select “Headset” and press the “Select” key. The following submenus are displayed.
 - a. Find Headset
 - b. Paired Headset
4. Select “Find Headset” and press the “Select” key. PWG-600 searches for the available headsets within the Bluetooth range and displays a list of their Bluetooth names.
5. Select the Bluetooth name of the headset you want to pair with PWG-600, and press the “Select” key. A screen titled “PIN entry” appears on the PWG-600 screen.
6. Enter the corresponding PIN (for example, type “0000” if the PIN is specified as “0000”) and press the “Select” key.
7. Select “Paired headset” and press the “Select” key. The paired headset is shown in the list of paired devices.

INFORMATION

Viewing network statistics

You can view the transfer rate, SSID, WiFi strength, Link quality, Network mode, Encryption status, and MAC address.

- From the desktop, press the “Menu” key.
- Select “Info” icon and press the “Select” key.

The following parameters are displayed when you selected the “Info” icon. Press the “Next” key to view and scroll between pages.

Page 1: Phone Information

- **IMEI Number:** Shows the IMEI number
- **Bluetooth Address:** Shows the Bluetooth MAC address
- **MAC Address:** Shows the MAC address of the phone.
- **Version:** Shows the firmware version of the phone.

Page 2: Network Information

- **WiFi Status:** Shows the percentage of the WiFi signal.
- **SSID:** Displays the SSID of the connected access point.
- **Channel:** WiFi is available in various frequency bands that are available in different channels. The channel shows you the current channel the WiFi is connected to.
- **Transmit Rate:** Displays the rate at which data transfer is taking place.
- **Signal Strength:** Shows the percentage of the VoIP signal
- **Link Quality:** Displays the quality of linking in percentage.
- **MAC:** Displays the MAC address

Page 3: Battery and connection information

- **Bluetooth Strength:** Displays the strength of the Bluetooth networks.
- **GSM Strength:** Displays the strength of the GSM signal.
- **VoIP Strength:** Displays the strength of the VoIP signal.
- **Battery Strength:** Displays the battery strength.

Viewing the GPRS Data Count

The GPRS Data Count displays the data transfer rate during data transmission and during data reception.

To view the GPRS Data Count:

- From the desktop, press the “Menu” key and select “Info”. Press the “Select” key and the following items are displayed.
 - GSM Strength
 - GSM Strength
 - WiFi Status
 - Channel
 - Transfer Rate
 - GPRS Data Count
 - SSID
 - WiFi Strength
 - Link Quality
 - Network Mode
 - Enc Status
 - Device MAC Addr
 - AP MAC Address
 - Battery Strength
 - Auth Status
 - VoIP Strength
 - Bluetooth Strength
 - Version Number
 - IMEI Number
 - BT Address
- Select “GPRS Data Count” and press the “Menu /Select” key. The data transfer rate is displayed.

Viewing the Firmware Version and other information

To view the version of the current Firmware:

- From the desktop, press the “Menu” key.
- Using the navigational keys select “Info” and press the “Select” key. The following information items are displayed. Press the “Next” key to go to next page.

Page 1: Device Info

- IMEI Number
- Bluetooth Address: *Bluetooth MAC address of the PWG-600*
- MAC Address: *The PWG-600 internal network chip MAC address*
- Version: *Firmware version*

Page 2: WiFi Info

- WiFi Status:
- SSID:
- Channel: *Channel or frequency the PWG-600 is connected to the WiFi network*
- Signal Strength: *The percentage of signal strength of the WiFi Network. Zero means the PWG-600 is with least signal strength whilst one hundred denotes the highest level of signal strength.*
- Link Quality:
- MAC Address: *The MAC address of the Access Point that the PWG-600 is connected to.*

Page 3: Other Info

- Bluetooth Strength
- GSM Strength
- VoIP Strength
- Battery Strength

Upgrading Firmware Using the USB Download Mode

The USB download mode is used for firmware upgrading. In order to upgrade the firmware, the following are required which are provided to you with PWG-600:

- USB Driver files named “usbser.inf” and “usbser.sys”
- The USB firmware upgrade program file “Uploader_usb.exe”
- Firmware file named “bundle.bin”

The Firmware file “bundle.bin” and the “Uploader_usb.exe” file must be saved in a single folder in your PC. When the “Uploader_usb.exe” file is run, it will look for the “bundle.bin” file in the same folder.

The steps to enter the USB Download mode for firmware upgrading are as follows:

1. Turn off the PWG-600 and remove the battery.
2. Press and hold down the “Volume decrease” key and at the same time insert the battery into the battery compartment. The phone will then enter the “Firmware Upgrade” mode with a message titled “Firmware upgrade (USB)” appearing on the PWG-600 screen.
3. Connect a mini USB cable from the USB terminal of PWG-600 to a USB port on your PC. A message appears on the PC screen asking for the USB drivers. An installation wizard starts, guiding you with the USB driver installation.
4. Note the COM port number for the inserted USB cable from Device Manager under System Properties in your PC. It appears under the “Ports” folder as “WIM Comm port (COM 7)” if ‘7’ is the <COM port number>.
5. The “Uploader_usb.exe” file shall be run from the command prompt as follows:
 - a. Type “uploader_usb.exe <COM port number>” in the command prompt and press the “ENTER” key on your keyboard.
 - b. For example, if the COM port obtained in step 2 is ‘7’ type “uploader_usb.exe 7” and press the “ENTER” key.
6. The upgrade status is shown. Please wait while the firmware upgrade is completed. The unit will restart once the firmware upgrade is completed.

CAUTION: DO NOT REMOVE THE BATTERY OR TURN OFF THE DEVICE WHILE THE FIRMWARE UPGRADING IS TAKING PLACE. REMOVING THE BATTERY DURING THE FIRMWARE UPGRADING MAY CAUSE THE FIRMWARE UPGRADE TO FAIL, CAUSING THE PHONE UNABLE TO BOOT UP.

Browsing the Internet with a PC

You can use PWG-600 to browse the Internet, check e-mails using *WiFi network* or using *GPRS network*.

If WiFi is available, then browsing takes place through the WiFi network. If WiFi is unavailable, GPRS network is automatically selected for browsing.

- Connect the PWG-600 to the PC through the USB cable.
- A USB COM port is created. To find the COM port,
 - Click “Start”, point to “Settings”, and select “Control Panel”. A screen titled “Control Panel” is displayed when you select “Control Panel”.
 - Double-click the “System” icon. A screen titled “System” is displayed.
 - Click the “Hardware” tab and click the ‘Device Manager’ button. A screen titled “Device Manager” is displayed when you select ‘Device Manager’.
 - Expand the column named “Ports”. The port with the caption “WIM Comm Port” is the USB COM port. Please memorize this COM port.
- Click “Start”, point to “Settings”, and select “Control Panel”. A screen titled “Control Panel” is displayed when you select “Control Panel”.
- Click the “Phone and Modem Options” icon. A screen titled “Phone and Modem Options” is displayed.
- Click the “Modems” tab.
- Click “Add”.
- Select “Don’t detect my modem; I will select it from a list” and click ‘Next’. A screen titled “Install New Modem” is displayed.
- Select “Standard 33600bps Modem” and click ‘Next’.
- Select the USB COM port, which is got in “step d” and click ‘Next’.
- Click Finish.
- If a message “Digital signature not found. Do you want to continue with the installation?” appears, click ‘Yes’ and then click ‘Finish’.
- This completes the installation of the Modem on the USB COM port.
- To set up a new Dial-up connection, click “Start”, point to “Settings”, and select “Control Panel”. A screen titled “Control Panel” is displayed when you select “Control Panel”.

In case of Windows 2000 follow the steps below.

- Click the “Network and Dial-up Connections” icon. A screen titled “Network and Dial-up Connections” is displayed.
- Double-click the “Make New Connection” icon. A network connection Wizard guides you in setting up a new connection. Click ‘Next’.
- Select “Dial-up to the Internet” and click ‘Next’.
- Select “I want to setup my Internet connection manually, or I want to

- connect through a local area network (LAN)” and click ‘Next’.
- Select “I connect through a phone line and a modem” and click ‘Next’. If you have more than one Modem installed, a screen titled “Choose Modem” is displayed.
 - Select the Standard 33600bps Modem installed on the USB COM port and click ‘Next’.
 - The telephone number to use is “*99#”. Don’t select the “Use area code and dialing rules”. Click ‘Next’.
 - Enter the PWG-600 Mobile number in the username field and click on OK. You will be asked about the password. The password field can be left blank. If the password is left blank, it will ask to confirm. Click on ‘Yes’. Then click ‘Finish’.
 - Enter a name for the new connection to save your settings and click ‘Next’.
 - A message “Do you want to set up an Internet mail account now?” is displayed after you click ‘Next’. Click ‘Yes’ if you wish to set up the Internet mail account. Click “No” if you wish to set up the Internet account later. Click ‘Next’ and then click ‘Finish’.

In case of Windows XP follow the steps below.

- Click the “Network Connections” icon. A screen titled “Network Connections” is displayed.
- Click on the “Create a new connection” in the Network Tasks. A network connection Wizard guides you in setting up a new connection. Click “Next”. Select “Connect to the Internet” and click “Next”.
- Select “Set up my connection manually” and click “Next”.
- Select “Connect using dial-up modem” and click “Next”. If you have more than one Modem installed, a screen titled “Select a Device” is displayed.
- Select the Standard 33600bps Modem installed on the USB COM port and click ‘Next’.
- Enter a name for the new connection to save your settings and click “Next”.
- Enter the number “*99#”.
- Enter the PWG-600 Mobile number in the username field and click on OK. You will be asked about the password. The password field can be left blank. If the password is left blank, it will ask to confirm. Click on “Yes”. Then click “Finish”.

When you want to browse the internet, click “Start”, point to “Settings”, and select “Control Panel”. A screen titled “Control Panel” is displayed when you select “Control Panel”. Click the “Network and Dial-up Connections” icon. A screen titled “Network and Dial-up Connections” is displayed. Click the connection that you created.



- Click on the “Properties” button.
- In the General Tab, connect using the modem that you installed on the USB COM port. In the same Tab click ‘Configure’.
- Unselect all the ‘Hardware features’. Click ‘OK’. Then again click ‘OK’. Then click ‘Dial’. The Dial-up connection is setup.

Note: The procedure is the same while browsing through WiFi or GPRS.

PDA Functions Using PWG-600

Connecting PWG-600 with a PDA (Personal Digital Assistant)

You can connect a PDA with PWG-600 through Bluetooth. Once connected, you can perform all PWG-600 functions like making calls, receiving calls, sending SMS, and receiving SMS.

The steps to connect the PDA with PWG-600 are as follows:

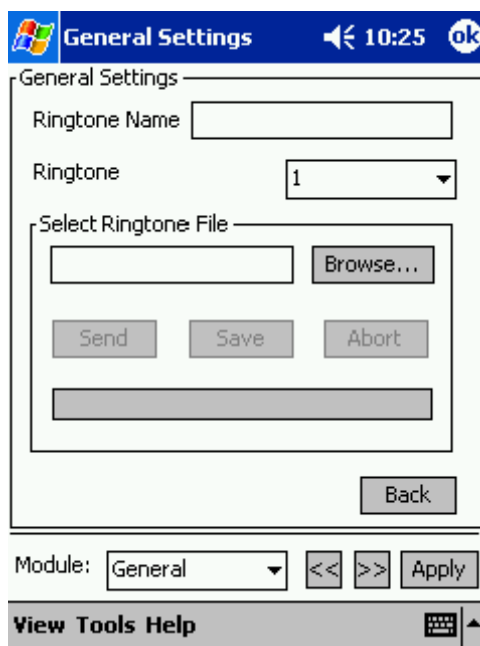
- Using “Bluetooth Manager” on your PDA, attempt to locate (inquire for) the Bluetooth devices in the vicinity.
- Select PWG-600 from the list of devices displayed.
- Pair the PDA with PWG-600 and enter the PIN when prompted.

Downloading polyphonic ring tones from a PDA

You can download polyphonic ring tones on your PWG-600 from a PDA. The PDA must be Bluetooth enabled and must be paired with PWG-600.

The steps to download polyphonic ring tones are as follows:

- Press the “Config.Stat” button on the start up screen of “WIM for PDA”. A screen titled “Profiles” is displayed.
- Click the radio button next to “Expert” and click “Edit Profiles”. A screen titled “Bluetooth Settings” is displayed.
- Click the drop down arrow next to the “Module” field, select “General” and click the ‘Next’ button. A screen titled “General Settings” is displayed.
- Click the ‘Next’ button four times. A screen titled “General Settings” is displayed.



- Enter the name of the ring tone in the “Ring tone” field.
- Click the drop down arrow next to the “Ring tone” field and select a desired ring tones.
- Click the “Browse” button next to the “Select Ringtone File” and select the “.wav” file of the corresponding ring tone that you want to download.
- Click the “Send” button to begin download. Click “Save” to save the ring tone on PWG-600.
- Click “Abort” to discontinue the download.

Setting SOS numbers

The international default SOS number is 112 which is network independent. In the event of an emergency, please dial 112. The 112 can only work if there is at least GSM network available.

You can set three emergency numbers (using PDA WIM) on PWG-600 to make calls during an emergency. The PDA must be Bluetooth enabled and must be paired with PWG-600.

The steps to set SOS numbers from the PDA are as follows:

- Press the “Config.Stat” button on the start up screen of “WIM for PDA”. A screen titled “Profiles” is displayed.
- Click the radio button next to “Expert” and click “Edit Profiles”. A screen titled “Bluetooth Settings” is displayed.
- Click the drop down arrow next to the “Module” field, select “GSM” and click the ‘Next’ button. A screen titled “GSM Settings” is displayed.
- Enter the SOS numbers in the respective fields and click ‘OK’. The previous screen appears when you click ‘OK’.
- Click ‘Apply’ to save the numbers.

BROWSING THE INTERNET WITH A PDA THROUGH BLUETOOTH

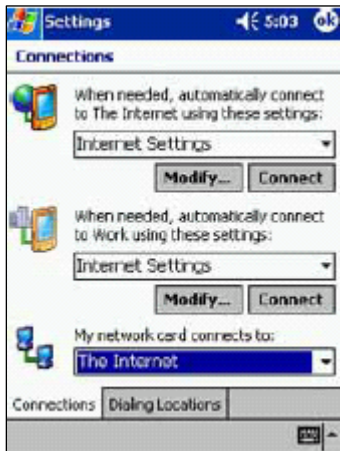
You can browse the Internet using a Bluetooth enabled PDA that has been paired with PWG-600. Here PWG-600 functions as a modem. You can browse the Internet using GPRS or WiFi networks.

Browsing the Internet using GPRS

In order to use GPRS, you have to set up a new connection on the PDA.

To set up a new connection:

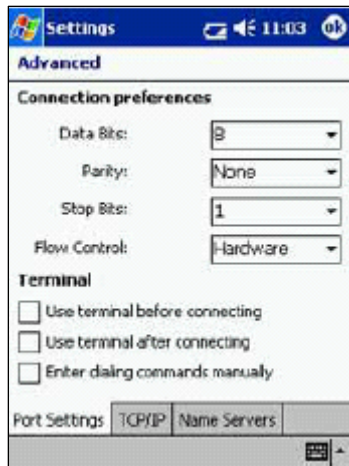
- Create a new Internet connection on the PDA. To make a new connection, click “Start”, point to “Programs”, then point to “Settings” and click the “Connections tab”. A screen titled “Connections” is displayed.



- Click the “Modify” button and a screen entitled “Internet Settings” is displayed.
- Click on “New” and a screen entitled “Make New Connection” is displayed.



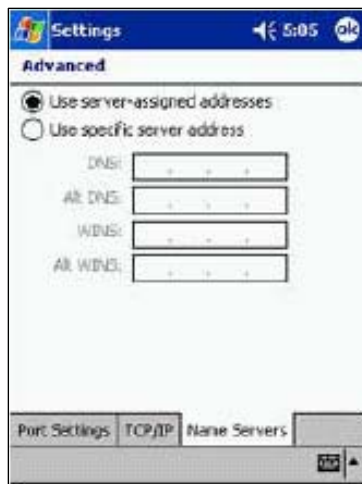
- Enter the name of the connection in the “Enter a name for the connection” field.
- Click the drop down arrow next to the “Select a modem” field and select Bluetooth Dialup Modem.
- Select the baud rate as 115200.



- Click the 'Advanced' button. A screen titled "Advanced" is displayed.



- Click the 'TCP/IP' button. A screen showing the details of 'TCP/IP' is displayed.



- Click the "Name Server" button. A screen showing the details of "Name Servers" Screen is displayed.
- Click on the "OK" button on the title bar.

A screen titled “My connection” is displayed if you entered “My connection” as the name of the new Internet connection.



- Enter the country code, area code and the phone number to connect to the GPRS network. The network service provider provides these details.
- Click the ‘Next’ button. A screen titled “My Connection” is displayed.
- Click the ‘Finish’ button.



A screen titled “Internet settings” is then displayed.

This completes the steps to make a new connection.

Connecting to the GPRS Network using a PDA

In order to connect to the GPRS network through the PDA please perform the following steps:

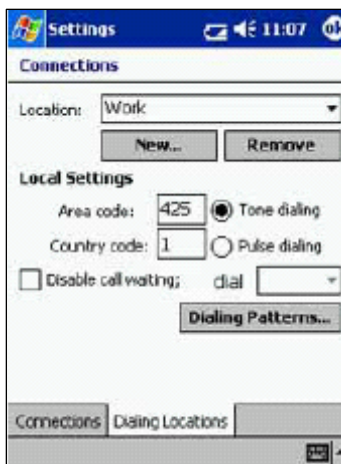


- Using Bluetooth manager from your PDA, select the device that you want to connect. Make a DUN (Dial up networking) connection to that device. The procedure to make a DUN connection depends on the Bluetooth card used and the corresponding software.
- “Bluetooth Connection” screen will be displayed.
- Select the Connection that you created and click the “ok” button.



A Login Screen is displayed as shown in Fig. 9.12.

- Enter the Username and the Password to login to the network. The service provider provides the User Name and the Password.
- Click the “OK” button.



- A screen titled “Connections” is displayed when you click “OK” as shown.
- Click on the ‘Dialing patterns’ button.



- A screen titled “Dialing patterns” is displayed.
- Enter "G" for local call, long distance calls, and international calls.
- Click “OK”. The connection to the network takes place.

NOTE: This procedure and also the screens shown are for a specific SIM Card only. The procedure and the screens will be different for a different SIM card.

Browsing the Internet using WiFi

In order to browse the Internet using WiFi, you must set up WiFi on PWG-600. This can be done from the PDA as well as from the PWG-600.

The steps to set up Internet using WiFi on the PDA are as follows:

- **Switch WiFi to “On”:** Click the WiFi General Tab to turn WiFi “On” and then click on the “Apply” button
- **Manual mode:** Click the WiFi General Tab to select the Manual Mode. Click the ‘Apply’ button. Click the “Site Survey” Tab. Click the ‘Rescan’ button. A list of the available networks is shown. Select a network and click ‘Connect’.
- **Auto mode:** Click the “WiFi General” Tab to select the Auto Mode. Click the “Apply” button.

NOTE: Before switching to the Auto mode, please set the appropriate profiles.

- To set WEP keys click the WiFi Encryption Tab and set Encryption to “On” or “Off”.
- Select the type of Encryption.
- Set the WEP key to use and click the “Apply” button.
- Click the WiFi Configuration Tab to set Authentication “On” or “Off”.
- Set the Username and Password (*if required*).
- Click the “Apply” button.
- To set Static IP click the WiFi Network tab. Deselect the DHCP check box. Set the desired IP, subnet mask, default gateway and the DNS server in the corresponding fields and click the “Apply” button.
- To set Dynamic IP click the WiFi Configuration tab. Select the DHCP check box and click the “Apply” button.
- To set the “Power Saving” mode, click the WiFi Advanced tab. Set the Power saving option as “On” or “Off” and click the ‘Apply’ button.

- To set a new profile click each WiFi Configuration tab and set the parameters for the profiles.
- Click the WiFi Profiles tab and enter the name that you want to set for the profile in the “Profile Name Edit” box. Select the profile in which you want to save the new profile.
- Click the “Save profile” button and click the “Apply” button.
- To edit an existing profile click each WiFi Profiles tab and click the “Load Profile” button to load the parameters of that profile.
- Click each WiFi Configuration tab to set parameters for each profile.
- Click the WiFi Profiles tab and enter a name for the profile in the Profile Name Edit box.
- Select the profile into which you wish to save the new profile.
- Click the “Save profile” button and click the “Apply” button.
- To delete profiles click each WiFi Profiles tab and select the profile you wish to delete. Click the “Delete profile” button and click the “Apply” button.

To browse the Internet using WiFi:

- Connect to an available WiFi network Manually or Automatically.
- Set up a DUN (*Dial Up Networking*) connection.
- Click the “Internet Explorer” icon from your desktop to browse the Internet.

NOTE: To browse the Internet using WiFi, enter the same username and password that you had entered when setting the WiFi parameters.

ADDITIONAL INFORMATION

You can browse the Internet using a Bluetooth enabled PDA that has been paired with PWG-600. Here PWG-600 functions as a modem. You can browse the Internet using GPRS or WiFi networks.

FCC Regulation

This model phone complies with part 15 of the FCC Rules. Operation is subject to the condition that this device does not cause harmful interference.

This device complies with Part 15 of the FCC Rules. Operation is subject to the following two conditions: (1) this device may not cause harmful interference and (2) this device must accept any interference received, including interference that may cause undesired operation.

This equipment has been tested and found to comply with the limits for a Class B digital device, pursuant to Part 15 of the FCC Rules. These limits are designed to provide reasonable protection against harmful interference in a residential installation.

This equipment generates, uses and can radiate radio frequency energy and, if not installed and used in accordance with the instructions, may cause harmful interference to radio communications.

However, there is no guarantee that interference will not occur in a particular installation. If this equipment does cause harmful interference to radio or television reception, which can be determined by turning the equipment off and on, the user is encouraged to try to correct the interference by one or more of the following measures:

- Reorient or relocate the receiving antenna.
- Increase the separation between the equipment and the receiver.
- Connect the equipment to an outlet on a circuit different from that to which the receiver is connected.
- Consult the dealer or an experienced radio/TV technician for help.

Changes or modifications not expressly approved by the party responsible for compliance could void the user's authority to operate the equipment.

The antenna(s) used for this transmitter must not be co-located or operating in conjunction with any other antenna or transmitter.

This EUT is in compliance with SAR for general population uncontrolled exposure limits in ANSI/IEEE C95.1-1999 and has been tested in accordance with the measurement methods and procedures specified in OET Bulletin 65 Supplement C.

European regulation

Products with the CE mark comply with the Radio & Telecommunication Terminal Equipment Directive (1999/5/EEC), the Electromagnetic Compatibility Directive (89/336/EEC) and the Low Voltage Directive (73/23/EEC) - as amended by Directive 93/68/ECC - issued by the Commission of the European Community.

Compliance with these directives implies conformity to the following European Standards:

- 1999/5/EEC Radio & Telecommunication Terminal Equipment Directive (R&TTE) EN 301 511
- Specific Absorption Rate (SAR) Standard: EN50360, EN 50361
- 73/23/EEC Low Voltage Directive (LVD) Standard: EN 60950:2000
- 89/336/EEC Electromagnetic Compatibility (EMC-Directive) Standard: EN301489-1/7
- The manufacturer cannot be held responsible for modifications made by the user and the consequences thereof, which may alter the conformity of the product with the mark.

RF exposure regulation (SAR)

This model phone meets the government's requirements for exposure to radio waves. This phone is designed and manufactured not to exceed the emission limits for exposure to radio frequency (RF) energy set by the Federal Communications Commission of the U.S. Government.

The FCC has granted an Equipment Authorization for this model phone with all reported SAR levels evaluated as in compliance with the FCC RF exposure guidelines. SAR information on this model phone is on file with the FCC and can be found under the Display Grant section of <http://www.fcc.gov/oet/fccid> after searching on FCC ID: Q3MPWG600

For body worn operation, this phone has been tested and meets the FCC RF exposure guidelines for use with an accessory that contains no metal and positions the handset a minimum of 1.5 cm from the body. Use of other enhancements may not ensure compliance with FCC RF exposure guidelines. If you do not use a body-worn accessory and are not holding the phone at the ear, position the handset a minimum of 1.5 cm from your body when the phone is switched on.



Copyright © 2006 by G-TEK Electronic Group

All rights reserved