

# **USER MANUAL OF SMART KIT**

## **IMPORTANT NOTE:**

Read the manual carefully before installing or connecting your Smart kit(Wireless module). Make sure to save this manual for future reference.

# **CONTENTS**

<b>① SPECIFICATION.....</b>	<b>2</b>
<b>② INSTALL THE SMART KIT (wireless module) .....</b>	<b>3</b>
<b>③ DOWNLOAD AND INSTALL APP.....</b>	<b>4</b>
<b>④ PREPARATION .....</b>	<b>4</b>
<b>⑤ CREATE ACCOUNT.....</b>	<b>5</b>
<b>⑥ NETWORK CONFIGURATION.....</b>	<b>6</b>
<b>⑦ HOW TO USE APP.....</b>	<b>17</b>
<b>⑧ SPECIAL FUNCTIONS.....</b>	<b>20</b>
<b>⑨ APP DECLARATION.....</b>	<b>26</b>

# **1** SPECIFICATION

Model: CE-SK103

Standard: IEEE 802. 11b/g/n

Antenna Type: Wxternal omnidirectional Antenna

Frequency Band: 2400-2483.5MHz

Operation Temperature:0°C~45°C/32°F~113°F

Operation Humidity: 10%~85%

Power Input: DC 5V/300mA

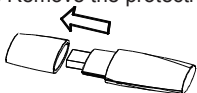
Maximum TX Power: 19.8dBm

## **NOTE:**

Company will not be liable for any issues and problems caused by Internet, Wi-Fi Router and Smart Devices. Please contact the original provider to get further help.

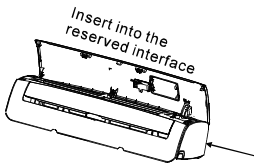
## 2 INSTALL THE SMART KIT(wireless module)

- 1) Remove the protective cap of the smart kit.



- 2) Open the front panel and insert the smart kit into the reserved interface.
- 3) Attach the QR code packed with SMART KIT to the side panel of the machine or other convenient location, ensure it is convenient to be scanned by the mobile phone.

**Kindly reminder:** It is better to reserve the other two QR Code in a safe place or take a picture and save it in your own phone.



**WARNING:** This interface is only compatible with SMART KIT(Wireless module) provided by the manufacturer.

### **3** DOWNLOAD AND INSTALL APP

**CAUTION:** The following QR Code is only available for downloading APP. It is totally different with the QR code packed with SMART KIT.



**Android**



**iOS**

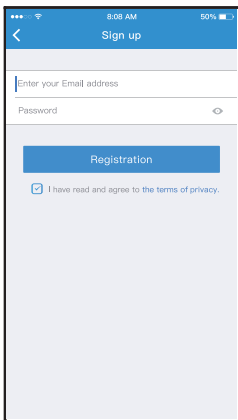
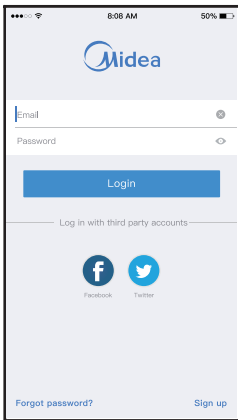
Scan QR code to download the “ Midea Air ” APP or get it from Google play and app store by manually searching.

### **4** PREPARATION

- 1) Please ensure your mobile device is connected to Wifi router. Also, the Wifi router has already connected to Internet before doing user registration and network configuration.
- 2) Mak sure your mobile device has already been connected to the wifi network which you want to use. Also, you need to forget other irrelevant wifi network in case it influences your configuration process.

## 5 CREATE ACCOUNT

**Reminder:** When you register to use app, you need read and agree the Data Privacy Notice.



① Click "Login "

② Enter your email address and password, and then click "Registration"

## 6 NETWORK CONFIGURATION

### Cautions

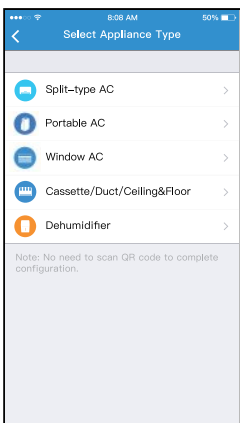
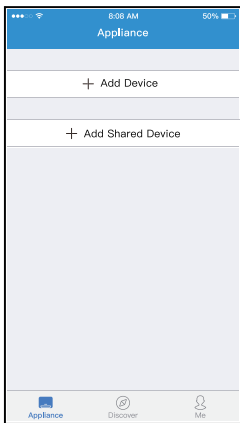
- It is necessary to forget any other around network and make sure the Android or iOS device just connect to the Wi-Fi network you want to configure.
- Make sure the Android or iOS device Wi-Fi function works well and can be connected back to your original Wi-Fi network automatically.

### Kindly reminder:

User must finish all the steps in 8 minutes after powering on AC, otherwise you need to power on it again.

### ■ Using Android device to do network configuration

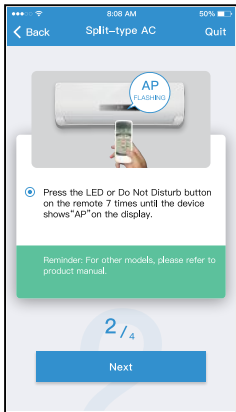
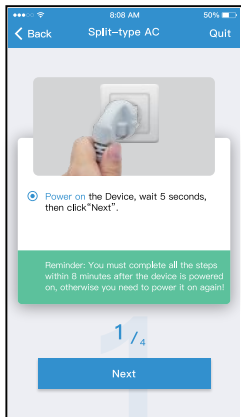
- ① Make sure your mobile device has already been connect to the Wi-Fi network which you want to use. Also, you need to forget other irrelevant Wi-Fi network in case it influences your configuration process.
- ② Disconnect the power supply of AC.
- ③ Connect the power supply of AC, and continuously press the “LED DISPLAY” or “DO NOT DISTURB” button seven times in 10 seconds.
- ④ When the AC displays 'AP', it means that the AC Wi-Fi has already entered into 'AP' Mode.
  - Some type of AC do not need the ② step to be in AP mode



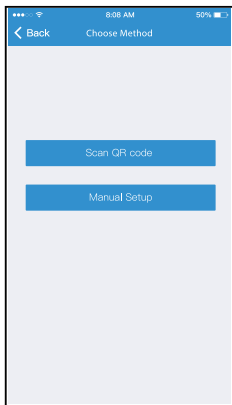
⑤ Press “ + Add Device ”

⑥ Select appliance type





⑦ Follow the above steps to enter "AP" mode.




⑧ Choose the network configuration method.



⑨ Choose the "Scan the QR code" method.

8:08 AM 50%

< Back Split-type AC Quit



Go to the phone's "Wi-Fi" settings, use the password "12345678" to connect to the network "net\_ac\_XXXX".


Reminder: If "net\_ac\_XXXX" network is not found on the Wi-Fi, check whether the device is in AP mode.If not, try again.

3 / 4

Go to Wi-Fi Settings


8:08 AM 50%

< Back Split-type AC Quit



Please select home Wi-Fi and enter the password.

Midea\_Jy\_5EF6

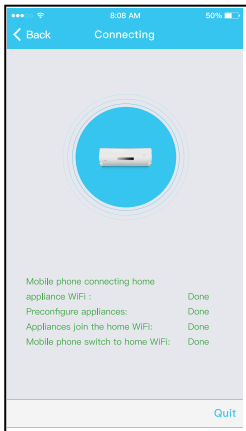
Please enter password 

4 / 4

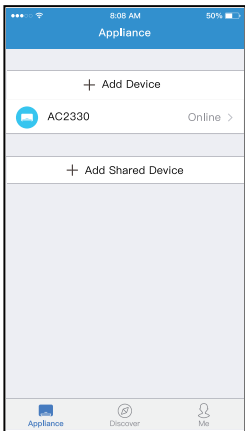
Start Configuration

⑨ Or choose the "Manual Setup" method.

⑩ Please enter password



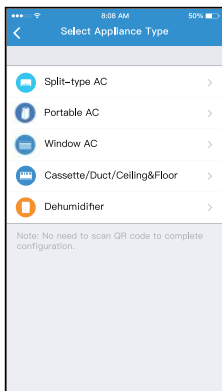
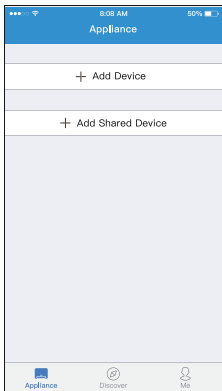
⑪ Network configuration is successful



⑫ Configuration Success, you can see the device on the list.

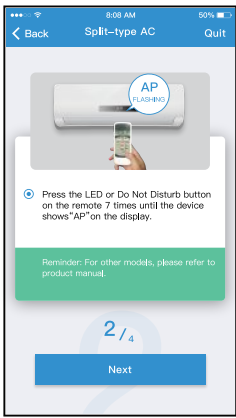
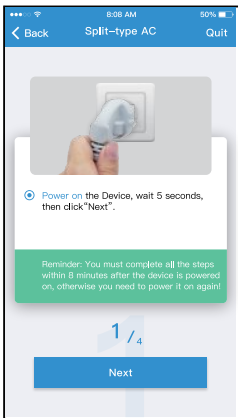
## ■ Using iOS device to do network configuration

- ① Make sure your mobile device has already been connected to the Wi-Fi network which you want to use. Also, you need to forget other irrelevant Wi-Fi network in case it influences your configuration process.
- ② Disconnect the power supply of AC(some units).
- ③ Connect the power supply of AC, and continuously press the “LED DISPLAY” button or “DO NOT DISTURB” button seven times in 10 seconds.
- ④ When the AC displays “AP”, it means that the AC Wi-Fi has already entered into “AP” Mode.

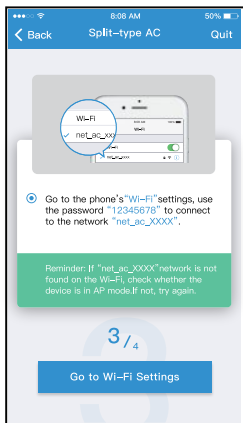


⑤ Press “ + Add Device ”

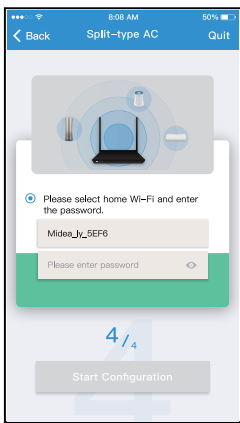
⑥ Select appliance type



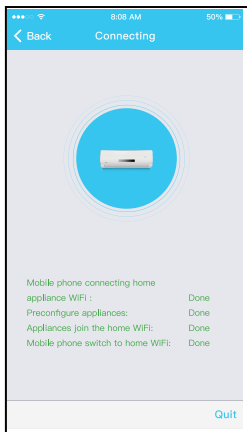
⑦ Follow the above steps to enter "AP" mode.



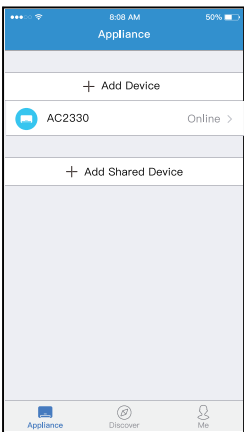
⑧ Connect to the Wi-Fi network.



⑨ Please enter password



⑩ Network configuration is successful



⑪ Configuration Success, you can see the device on the list.

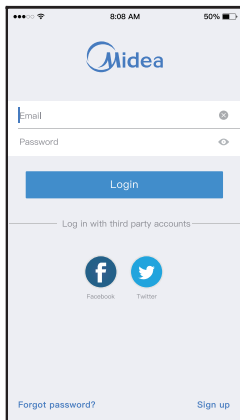


**NOTE:**

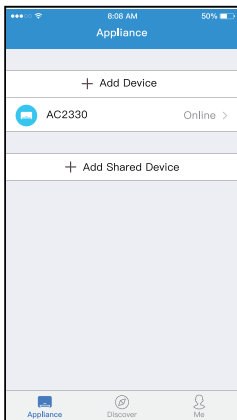
- When finishing network configuration, APP will display success cue words on the screen.
- Due to different internet environment, it is possible that the device status still display “offline” . If this situation occurs, it is necessary to pull and refresh the device list on the APP and make sure the device status become “online” . Alternatively, user can turn off the AC power and turn on it again, the device status will become “online” after few minutes.

## 7 HOW TO USE APP

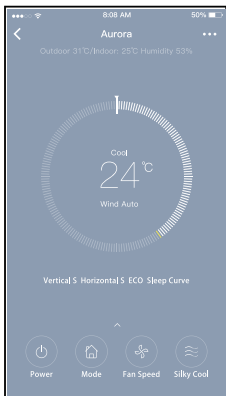
Please ensure both your mobile device and air conditioner are connected to the Internet before using app to control the air conditioner via internet, please follow the next steps:



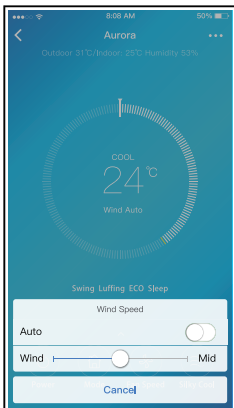
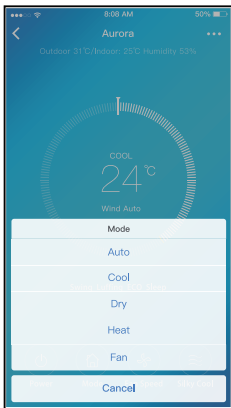
① Click "Login "



② Choose the air conditioner.



③ Thus, user can control air conditioners on/off status, operation mode, temperature, fan speed and so on.



## NOTE:

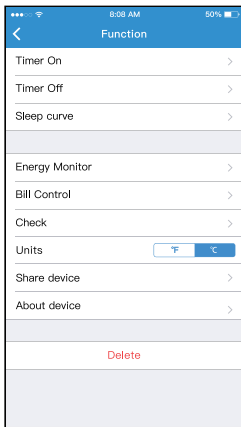
Not all the function of the APP is available on air conditioner. For example: ECO, Turbo, Swing function, please check the user manual to find more information.

## 8 SPECIAL FUNCTIONS

Including: Timer on, Timer off, Sleep curve, Check, Energy Monitor, Bill Control Check.

### NOTE:

No all the unit can use these special function on the APP. Thus, if the air conditioner do not support the above function, the function will be hid from the function list.



## ■ Timer on/ Timer off

Weekly, user can make an appointment to turn on or off AC on specific time. User also can choose circulation to keep the AC under schedule control every week.

8:08 AM 50%

Timer On Confirm

24 H 12 H

Timer on

Repeat Mon.Tues.Wed.Thur.Fri >

11 06

8:08 AM 50%

Repeat

Monday ✓

Tuesday ✓

Wednesday

Thursday

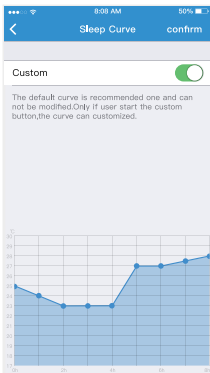
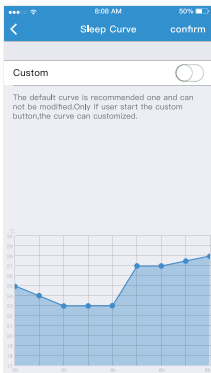
Friday

Saturday

Sunday

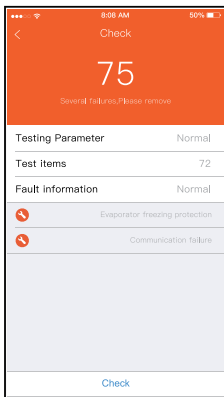
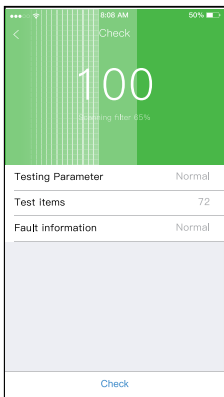
## ■ Sleep

User can customize their own comfortable sleep by setting target temperature.



## ■ Check

User can simply check the AC running status with this function. When finishing this procedure, it can display the normal items, abnormal items, and detail information.





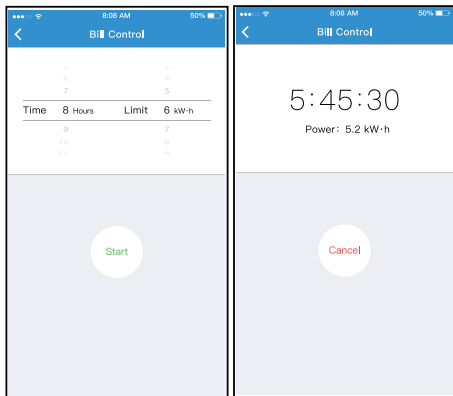
## ■ Energy Monitor

User can simply monitor the electricity consumption of AC unit by checking the chart and history record.



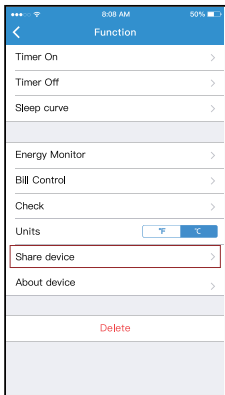
## ■ Bill Control

User can set parameters to limit the electricity consumption over a period of time.



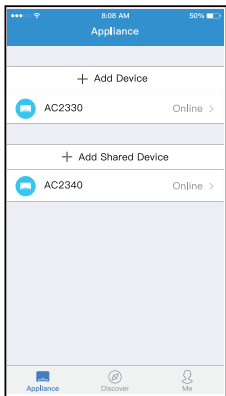
## ■ Share Device

The air conditioner can be controlled by multi-users at the same time by Share Device function.



① Click "Share device"

② Let the others to scan the displayed QR code.



③ Add the shared device.

## 9 APP DECLARATION

- **Applicable system: IOS, Android.**
  - APP can not support the latest software version of Android and IOS system.
  - Due to special situation may be occurred, we explicitly claims below: Not all of the Android and IOS system are compatible with APP. We will not be responsible for any issue as a result of the incompatibility.
- **Wireless safety strategy**

Smart kit only support WPA-PSK/WPA2-PSK encryption and none encryption .  
WPA-PSK/WPA2-PSK encryption is recommended.
- **Cautions**
  - Due to different network situation, control process may return time-out sometimes. If this situation occurs, the display between board and App may not be the same, please do not feel confused.
  - Smart Phone camera needs to be 5 million pixels or above to make sure scan QR code well.
  - Due to different network situation, sometimes, request time-out could happen, thus, it is necessary to do network configuration again.
  - The APP system is subject to update without prior notice for product function improvement. The actual network configuration process may be slightly different from the manual, the actual process shall prevail.
  - Please Check The Service Website For More Information.

## ● Declaration of conformity

**FCC ID: 2ADQOMDNA19**

**IC : 1 257 5A-MDNA19**

This device complies with Part 15 of the FCC Rules and Industry Canada's licence-exempt RSSs.

Operation is subject to the following two conditions:

- (1) This device may not cause interference; and
- (2) This device must accept any interference, including interference that may cause undesired operation of the device.

Only operate the device in accordance with the instructions supplied.

Changes or modifications to this unit not expressly approved by the party responsible for compliance could void the user's authority to operate the equipment.

This device complies with FCC radiation exposure limits set forth for an uncontrolled environment. In order to avoid the possibility of exceeding the FCC radio frequency exposure limits, human proximity to the antenna shall not be less than 20cm (8 inches) during normal operation.

NOTE: This equipment has been tested and found to comply with the limits for a Class B digital device, pursuant to part 15 of the FCC Rules. These limits are designed to provide reasonable protection against harmful interference in a residential installation. This equipment generates, uses and can radiate radio frequency energy and, if not installed and used in accordance with the instructions, may cause harmful interference to radio communications. However, there is no guarantee that interference will not occur in a

particular installation. If this equipment does cause harmful interference to radio or television reception, which can be determined by turning the equipment off and on, the user is encouraged to try to correct the interference by one or more of the following measures:

- Reorient or relocate the receiving antenna.
- Increase the separation between the equipment and receiver.
- Connect the equipment into an outlet on a circuit different from that to which the receiver is connected.
- Consult the dealer or an experienced radio/TV technician for help.

Hereby, we declare that this AC is in compliance with the essential requirements and other relevant provisions of RE Directive 2014/53/EU. A copy of the full DoC is attached.

**Manufacturer:**

GD Midea Air-Conditioning Equipment Co.,Ltd.

Lingang Road Beijiao Shunde Foshan

Guangdong People's Republic of China 528311

CS373U-APP(CE-SK103)-B

16110800000348

20181110



技术要求：  
铜版纸100克，  
74mm\*105mm  
彩色印刷