

# ARC(Attachable Remote Controller) User Manual

## Section 1 Overview

### Section 1-1 Purpose

This manual describes the operating procedure for ARC(Attachable Remote Controller) in system.

### Section 1-2 Simple Block Diagram

ARC is consist of Bluetooth module and Recharge module. Bluetooth module can transfer data with 2.4GHz . Recharge module is supported by USB 5V. Operating battery is Li-polymer 3.7V. ARC board can control 2 kind of Keys which are P1 and Freeze.

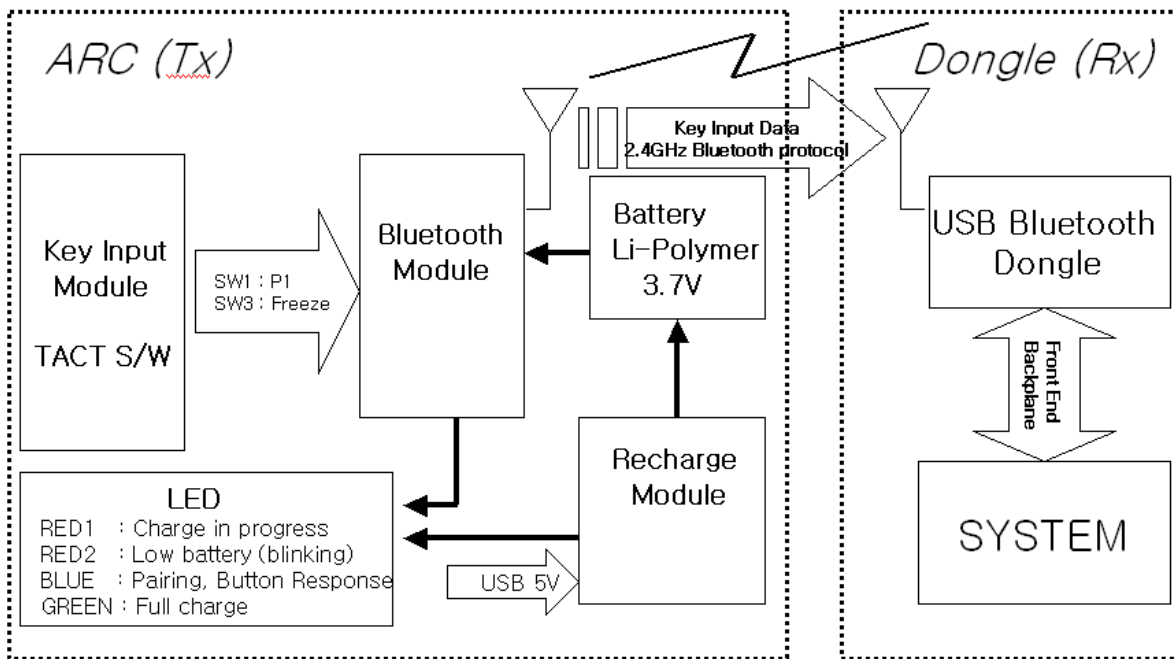


Fig.1 ARC Block Diagram

### Section 1-3 Parts Required

	Description	GPN	Remark
1	ARC	5318111	Remote Controller
2	USB type Bluetooth Dongle	5316870	Bluetooth dongle
3	Recharge cable	5324554	Mini A-type USB Cable

## Section 2 Operating procedure

### Section 2-1 Recharging procedure

- 1) Connect recharge cable to ARC module
- 2) Connect recharge cable to USB port of rear panel.
- 3) Confirm LED status.

Table1. LED Status

	<b>Color</b>	<b>Operating</b>
LED1	Red	Charge in Progress
LED2	Green	Full Charge
LED3	Blue	Pairing and Button response
LED4	Red	Low Battery

### Section 2-2 Pairing

- 1) Turn on System and Press 'Utility' button in Keyboard.
- 2) Click Connectivity and select 'ADM' in Title Log In Window.(Fig.2, Fig.3)  
Operator : ADM, / Password : empty  
Finally click OK.
- 3) Click Wireless and select Enable.
- 4) Press P1+ Freeze buttons of ARC at the same time more than 3 seconds.
- 5) Confirm blinking blue LED
- 6) Click Find Device.(Fig.4)
- 7) Check notification of Address and then click 'Save'(Fig.5)
- 8) Check that 'RC' icon is to be green low of the left.(Fig.5)

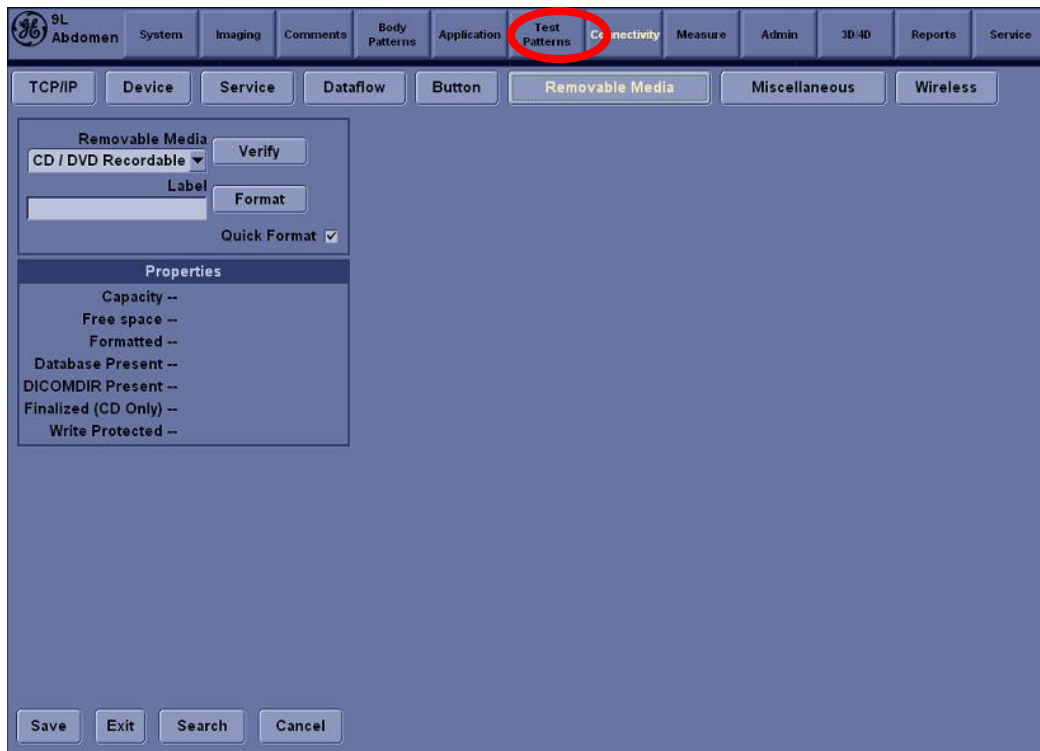


Fig.2 Connectivity in Utility menu

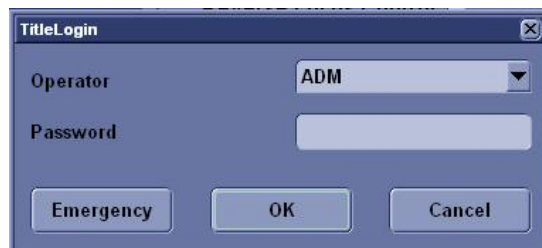


Fig.3 Title Login

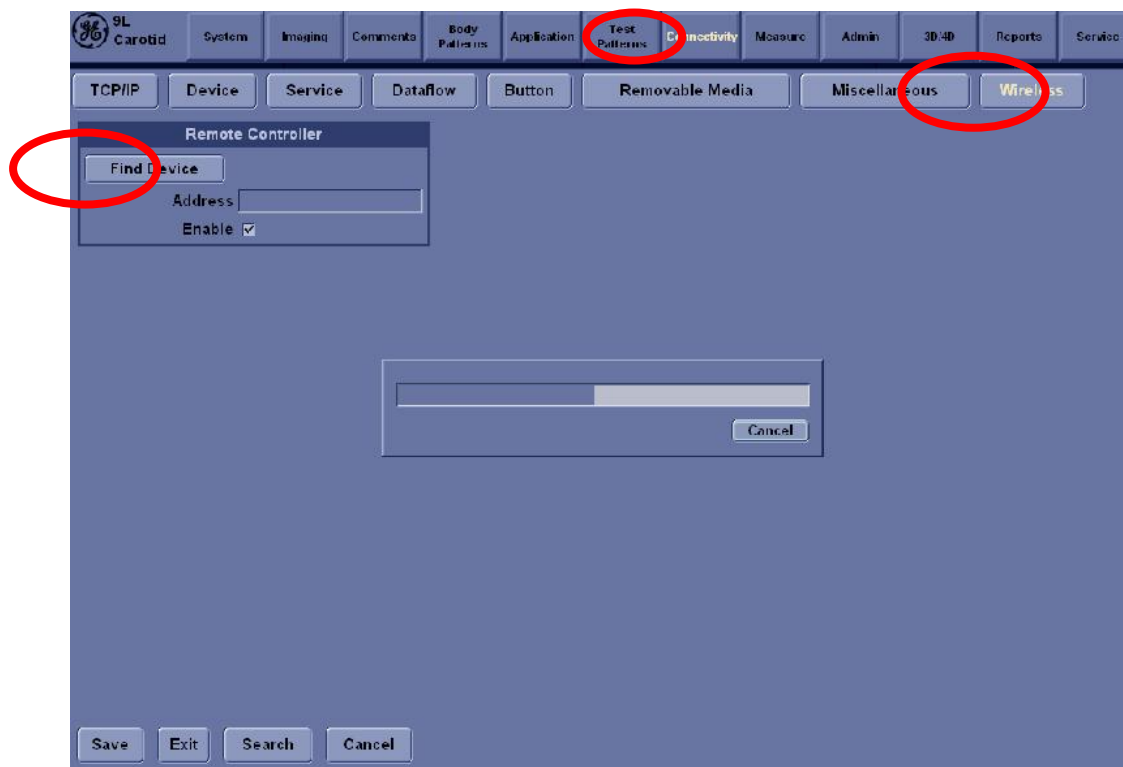


Fig.4 Wireless and Find Device

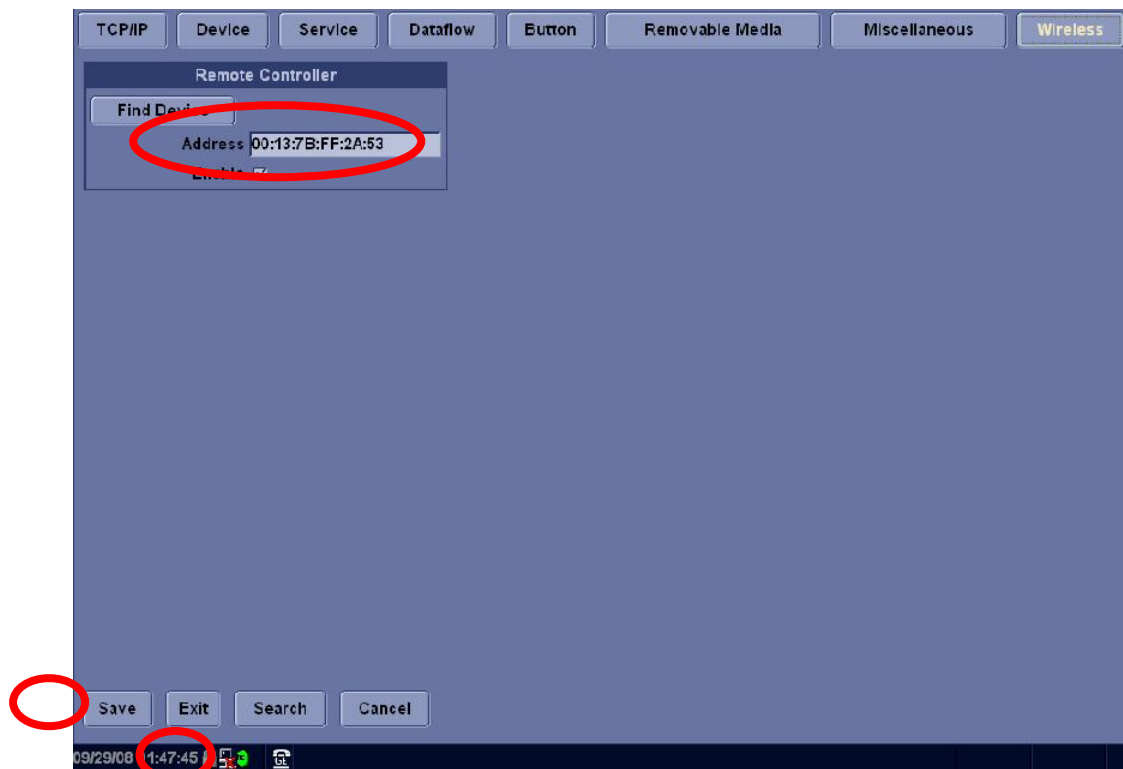


Fig.5 Checking Pairing

### Section 2-3 Key Operation

- 1) Freeze Button is already assigned as Freeze function.  
When pressed Freeze button of ARC, Live scan image is stopped.
- 2) P1 is same function which is defined in utility of Keyboard Button.  
For example, if P1 button is assigned BW printer. BW printer will operate when pressed P1 button of ARC.
- 3) If reset is needed, press Reset button by suitable equipment.

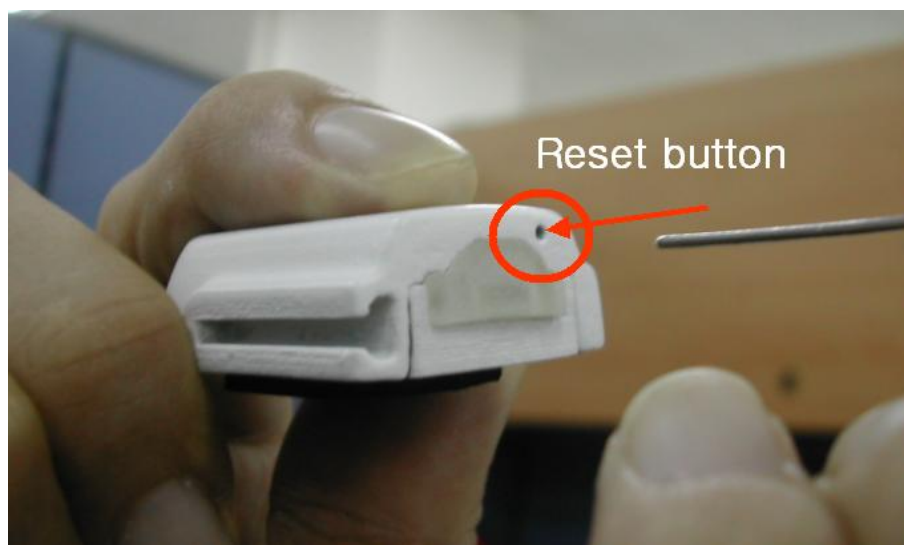


Fig.6 Reset procedure

## FCC Requirements

### Cautions

Modifications not expressly approved by the party responsible for compliance could void the user's authority to operate the equipment.

### FCC compliance Information

This device complies with part 15 of FCC Rules. Operation is subject to the following two conditions: 1. This device may not cause harmful interference, and 2. This device must accept any interference received. Including interference that may cause undesired operation.

### Information to User

This equipment has been tested and found to comply with the limits for a Class B digital device, Pursuant to part 15 of the FCC Rules. These limits are designed to provide reasonable protection against harmful interference in a residential installation. This equipment generates, uses and can radiate radio Frequency energy and, if not installed and used in accordance with the instructions, may cause harmful interference to radio communications. However, there is no guarantee that interference will not occur in a particular installation. If this equipment does cause harmful interference to radio or television reception, which can be determined by turning the equipment off and on, the user is encouraged to try to correct the interference by one or more of the following measures:

- Reorient or relocate the receiving antenna.
- Increase the separation between the equipment and receiver
- Connect the equipment into an outlet on a circuit different from that to which the receiver is connected.
- Consult the dealer or an experienced radio/TV technician for help.