

INSTRUCTIONS

SAFETY WARNING: Remove all plastic fasteners and tags. These are part of the packaging and should be discarded.

SAVE THESE INSTRUCTIONS – This manual contains important safety and operating instructions for power units.

WARNING

ELECTRIC PRODUCT. Keep away from children. Not recommended for children under 3 years of age. As with all electrical products, precautions should be observed during handling and use to reduce the risk of electric shock. If the supply cord is damaged, it must be replaced by the manufacturer, its service agent or similarly qualified persons in order to avoid a hazard.

WARNING

Strobe lights have been known to trigger seizures in people with photosensitive epilepsy.

WARNING

The light is very bright. Do not shine directly into eyes.

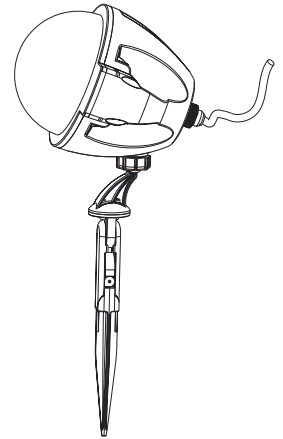
IMPORTANT SAFETY INSTRUCTIONS

READ ALL INSTRUCTIONS BEFORE USING (THIS FURNISHING)

WARNING: TO REDUCE THE RISK OF BURNS, FIRE, ELECTRIC SHOCK OR INJURY TO PERSONS :

READ AND FOLLOW ALL SAFETY INSTRUCTIONS.

1. Do not secure the wiring of the product with staples or nails, or place on sharp hooks or nails.
2. Do not let lamps rest on the supply cord or on any wire.
3. Do not close doors or windows on the product or extension cords as this may damage the wire insulation.
4. Do not cover the product with cloth, paper or any material not part of the product when in use.
5. Do not use seasonal products outdoors unless marked suitable for indoor and outdoor use. When products are used in outdoor applications, connect the product to a Ground Fault Circuit Interrupting (GFCI) outlet. If one is not provided, contact a qualified electrician for proper installation.
6. This seasonal use product is not intended for permanent installation or use.
7. Do not mount or place near gas or electric heaters, fireplace, candles or other similar sources of heat.
8. Unplug the product when leaving the house, when retiring for the night, or if left unattended.
9. This is an electric product-not a toy! To avoid risk of fire, burns, personal injury and electric shock it should not be played with or placed where small children can reach it.
10. Do not use this product for other than its intended use.
11. Do not hang ornaments or other objects from cord, wire, or light string.
12. This product employs overload protection (fuse). A blown fuse indicates an overload or short-circuit situation. If the fuse blows, unplug the product from the outlet. Also unplug any additional strings or products that may be attached to the product. Replace the fuse as per the user servicing instructions (follow product marking for proper fuse rating) and check the product. If the replacement fuse blows, a short-circuit may be present and the product should be discarded.
13. This product has a polarized plug (one blade is wider than the other) as a feature to reduce the risk of electric shock. This plug will fit in a polarized outlet only one way. If the plug does not fit fully in the outlet, reverse the plug. If it still does not fit, contact a qualified electrician. Do not use with an extension cord unless plug can be fully inserted. Do not alter or replace.
14. Read and follow all instructions that are on the product or provided with the product.



CAUTION:

To reduce the risk of fire and electric shock:

1. Do not install on trees having needles, leaves or branch coverings of metal or materials which look like metal.
2. Do not mount or support wires in a manner that can cut or damage wire insulation.

SAVE THESE INSTRUCTIONS.

FEATURES

- Plastic housing with 4 pieces high power LEDs.
- UL power cord operated.
- Easy installation.
- High quality, long product life.

TECHNICAL SPECIFICATIONS

Material:	PC
Light sourcing:	1W LED * 2 3W LED * 2
Rating	120VAC 60Hz 0.11A 8.2W
Fuse	2pcs

ASSEMBLY INSTRUCTIONS

1. Gently remove contents from packaging and lay out in a clear area.
2. Assemble the light stake parts A & B as shown in illustration 1 , Push the A and B parts together until tighten the screws.
3. Push A through the circle, insert the grooves of projector, and tighten the circle, then adjust the angle of projector.

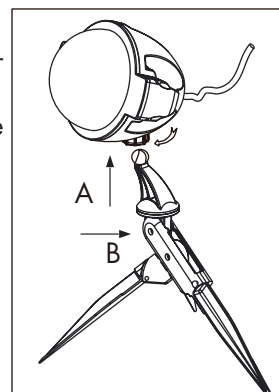


illustration 1

4. Plug power cord into standard wall socket. (illustration 2)
5. Unplug when not in use.

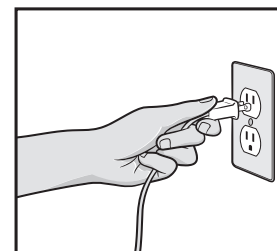


illustration 2

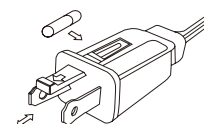
USER SERVICING INSTRUCTIONS

Fuse Replacement

WARNING: Risk of Fire: Replace only with same size and type of fuse.

WARNING: Risk of Fire: Do not replace the attachment plug. Contains a safety device (fuse) that should not be removed. Discard product if attachment plug is damaged.

1. Grasp plug and remove from the receptacle or other outlet device. Do not unplug by pulling on the cord.
2. Open fuse cover. Slide open the fuse access cover on top of the attachment plug towards blades. (See illustration)
3. Remove fuse carefully.



4. Replace fuse only with 5 Amp Max, 125 Volt fuse (provided with product)
5. Close the fuse cover. Slide closed the fuse access cover on top of the attachment plug.

OPERATE THE REMOTE:

1. Remove the remote from its packing box.
2. Remove the battery compartment cover. (Fig.1) Install the included 23A battery. Ensure the battery is installed correctly with regard to polarity (+ and -).
3. The remote has two buttons (Fig 2).

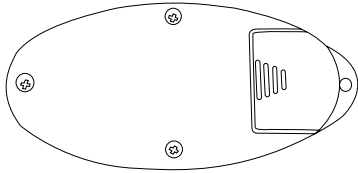


Fig. 1

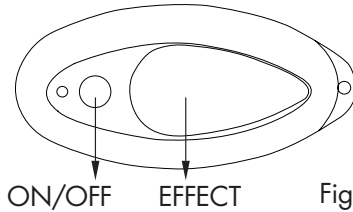
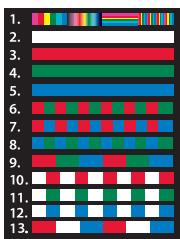


Fig. 2

- a. ON/OFF – Press to turn the set ON; press again to turn the set OFF.
- b. FUNCTION: Light Colors: Change the light color to any on this list by pressing the button on remote until you reach the desired color.



- | | |
|------------------|-------------------------|
| 1. LightShow | 8. Blue and Green |
| 2. White | 9. Red,Green and Blue |
| 3. Red | 10. White and Red |
| 4. Green | 11. White and Green |
| 5. Blue | 12. White and Blue |
| 6. Red and Green | 13. Red,White and Blue. |
| 7. Red and Blue | |

NOTES:

1. When using the remote to turn ON your set, there may be up to a 2 seconds delay before the light pattern starts working.
2. To change light patterns it is recommended to wait 2 seconds each time after pressing the Function button until you reach the desired pattern.
3. If for any reason the signal from the remote (transmitter) to the control box (receiver) hangs up, please turn off and then restart the power to the set.
4. If a power interruption, the system's memory keeps the last light pattern displayed.
5. The effective operating distance of the remote is 20' (6m).

OPERATING DETERMINATIONS

This product was designed for indoor and outdoor use.

Do not shake the device. Avoid brute force when operating the device.

Keep away from direct insulation (particularly in cars) and heaters.

Do not permit operation by persons not qualified to operating the device. Most damages are the result of unprofessional operation!

Never use solvents or aggressive detergents in order to clean the device! Rather use a soft and damp cloth.

Please use the original packaging if the device is to be transported.

Unauthorized modifications on the device are unacceptable due to safety reasons!

If this device is operated in any way different from the ways described in this manual, the product may suffer damages and the guarantee becomes void.

OPERATION

- Insert the plug into socket.
- Set this device as a projector.
- Extract the plug if not in use. Be careful with the power cord!

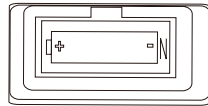
WARNING

- The device is for indoor and outdoor use!
- Suitable for outdoor use!
- Please keep away from heaters and other heating sources!

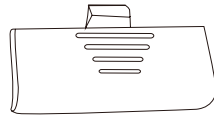
BATTERY CAUTION:

- Keep this product's battery out of the reach of small children or pets. If ingested, contact a physician immediately.
- Always purchase the correct size and grade of battery most suitable for the intended use.
- Replace all battery of a set at the same time.
- Clean the battery contacts and also those of the device prior to battery installation.
- Ensure the battery is installed correctly with regard to polarity (+ and -).
- Remove battery from equipment which is not to be used for an extended period of time.
- Remove used battery promptly.

INSIDE OF COMPARTMENT



OUTSIDE OF COMPARTMENT



BATTERY USAGE:

See illustration. 1. Keep these instructions for future reference because they contain important information. 2. May explode or leak and cause burn injury if recharged, disposed of in fire, mixed with a different battery type, inserted backwards or disassembled. 3. Products that contain batteries should not be disposed of in fire. The batteries inside may explode or leak. 4. Do not mix alkaline, standard (carbon-zinc) or rechargeable (nickel-cadmium) batteries. 5. Do not mix old and new batteries. Replace all batteries of a set at the same time. 6. Use only batteries of the same or equivalent type as recommended by the manufacturer. 7. Be sure to insert batteries with correct polarities and always follow manufacturers' instructions. 8. Remove exhausted batteries from product promptly. 9. Do not short-circuit supply terminals. 10. Remove batteries before storage or extended periods of non-usage. 11. Clean the contacts on the batteries and the device prior to battery installation. Non-rechargeable batteries are not to be recharged. Rechargeable batteries are not recommended for use in this product. If rechargeable batteries are being used, however, please follow these guidelines. (1). Rechargeable batteries should be removed from the product before being charged. (2). Rechargeable batteries should only be charged under adult supervision.

IMPORTANT

Damages caused by the disregard of this user manual are not subject to warranty. The dealer will not accept liability for any resulting defects or problems. Keep away from heaters and other heating sources! If the device has been exposed to drastic temperature fluctuation (e.g. after transportation), do not switch it on immediately. Leave the device switched off until it has reached room temperature. Please note that damages caused by manual modifications on the device or unauthorized operation by unqualified persons are not subject to warranty. Keep young children and amateurs away from the device!

USE AND CARE INSTRUCTIONS

1. Before using and reusing, inspect the product carefully. Discard any products that have cut, damaged or frayed wire insulation cords, cracks, lamp holders or enclosures, loose connections, or exposed copper wire.
2. When storing the product, carefully remove the product from wherever it is placed, including trees, branches, or bushes, to avoid any undue strain or stress on the product conductors, connections and wires.
3. When not in use, store neatly in a cool, dry location protected from sunlight.

WARNING

This device complies with Part 15 of the FCC Rules. Operation is subject to the following two conditions: (1) this device may not cause harmful interference, and (2) this device must accept any interference received, including interference that may cause undesired operation.

CAUTION: Changes or modifications not expressly approved by the party responsible for compliance could void the user's authority to operate the equipment.

NOTE: This equipment has been tested and found to comply with the limits for a Class B digital device, pursuant to Part 15 of the FCC Rules. These limits are designed to provide reasonable protection against harmful interference in a residential installation. This equipment generates, uses, and can radiate radio frequency energy and, if not installed and used in accordance with the instructions, may cause harmful interference to radio communications. However, there is no guarantee that interference will not

occur in a particular installation. If this equipment does cause harmful interference to radio or television reception, which can be determined by turning the equipment off and on, the user is encouraged to try to correct the interference by one or more of the following measures:

- Reorient or relocate the receiving antenna.
- Increase the distance between the equipment and receiver.
- Connect the equipment into an outlet on a circuit different from that to which the receiver is connected.
- Consult the dealer or an experienced radio/TV technician for help.

THESE INSTRUCTIONS ARE FOR ITEM

38771

NOTE

The manufacturer is not responsible for any radio or TV interference caused by unauthorized modifications to this equipment. Such modifications could void the user's authority to operate this equipment.



Visit WWW.GEMMY.COM for more information.

©2015 GEMMY INDUSTRIES CORP.
117 WRANGLER DRIVE, SUITE 100
COPPELL, TX 75019 U.S.A.
1 (877) 250-9032
MADE IN CHINA
PRINTED IN CHINA