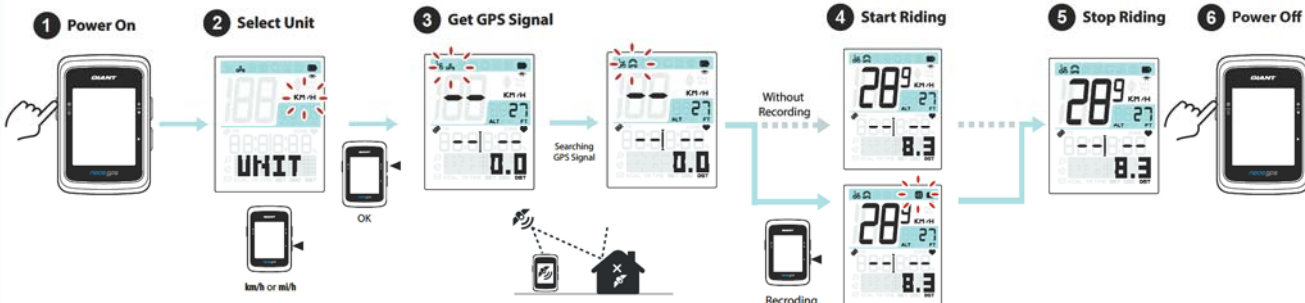
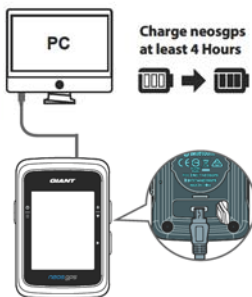
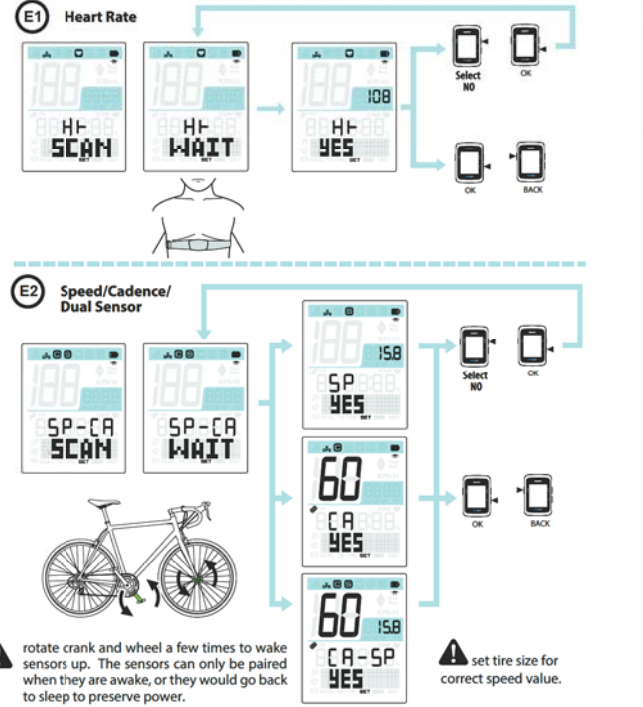
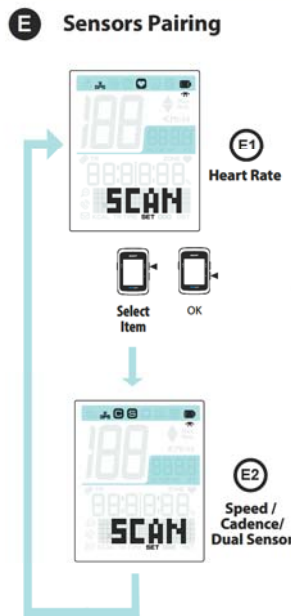
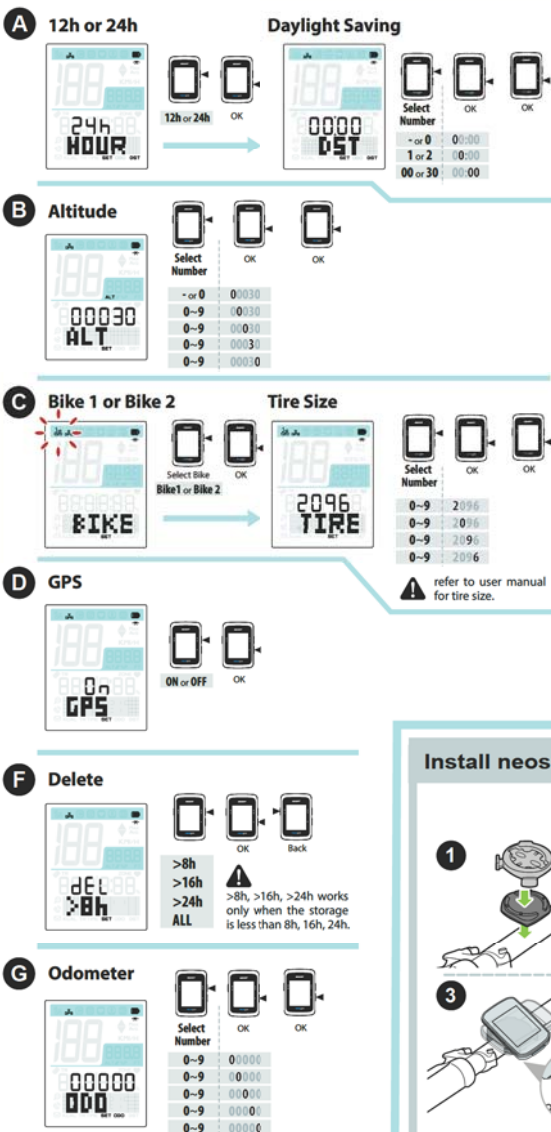
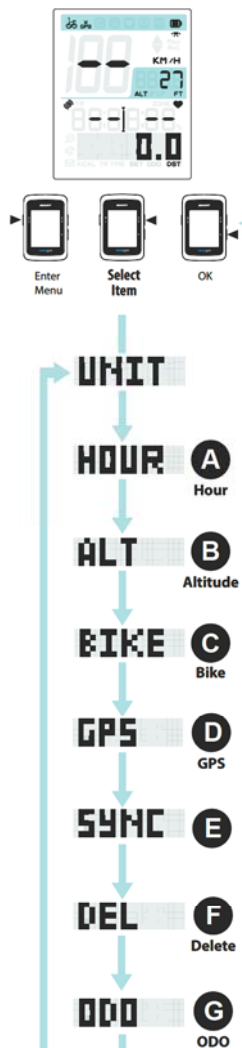


**Getting Started**

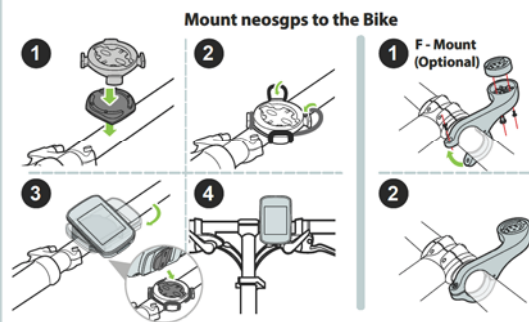
Quick Start Guide  
快速使用说明书  
Schnellstartanleitung  
Guia de inicio rápido  
Guide de démarrage rapide  
クイックスタートガイド  
빠른 시작 안내  
Aan de slag  
Instrukcja szybkiego uruchomienia



**Settings**



**Install neogps**



**Upload Trips**





#### Key Functions

**A Power/Menu** (⏻ / ☰)

Power On/Off: Press to turn the device on. Long press to turn the device off.

Enter/Exit Menu: Press to enter/exit menu mode while power on. Press to return to the main menu.

**B Backlight/Page** (\* / ▼)

Backlight: Long press to turn on/off backlight.

Select Options: In Menu, press to move down and scroll through menu options.

Switch Pages: In Meter mode, press to switch meter screen page.

**C OK/Recording** (▶)

OK: In Menu, press to confirm a selection.

Recording: In free cycling, press to start recording. When recording, press to stop recording.

**Reboot: Press 3 keys (⏻ / \* / ▶) and release at the same time to reboot the device.**

#### Neostrack Mobile App

After pairing with Neostrack App via Bluetooth with simple setup, you can upload trips, receive notifications(call, text and email), customize data grids, calibrate altitude and other advanced settings.

#### Icon Description

	Bike 1/ Bike 2		Email Notification		Altitude Gain Altitude Loss		Heart Rate Zone		Heart Rate Sensor
	No GPS Signal (Not fixed)		Text Notification		Ride Time		Odometer		Bluetooth Active
	Weak GPS Signal		Daylight Saving Time		Trip Time		Maximum		Recording
	Strong GPS Signal		Backlight		Setting Mode		Average		Current speed is faster/ slower than average speed
	Power Status		Morning Afternoon		Cadence Value		Cadence Sensor		
	Call Notification		Gradient		Heart Rate Value		Speed Sensor		

#### Note

Please keep away from other BLE sensors during sensor pairing.

To learn more, please go to [www.giant-bicycles.com](http://www.giant-bicycles.com) > Support > Owners Manuals to download user manual.



#### 按键功能

**A Power/Menu** (⏻ / ☰)

開關機：按此鍵開啟裝置。長按此鍵關閉裝置。

選單：短按進入或離開選單。在子選單中，按此鍵回到主選單。

**B Backlight/Page** (\* / ▼)

背光：長按開啟或關閉背光。選項：在選單中，短按瀏覽選單選項。換頁：在資訊畫面時，短按換頁瀏覽騎乘資訊。

**C OK/Recording** (▶)

確認：在選單中，短按進入或確認選項。

記錄：騎乘時，按此鍵開始記錄。記錄時，按此鍵停止記錄。

**重新啟動：同時長按三個按鍵(⏻ / \* / ▶)放開後，即可重新啟動裝置。**

#### Neostrack 手機應用程式

藍芽配對與簡單設定後，您就能上傳紀錄至Neostrack app，接收到來電、訊息和電子郵件的通知，自訂碼錶資訊格、校正高度和變更其它進階設定。

#### 圖示說明

	自行車 1/自行車2		郵件通知		總上升高度 總下降高度		心率區間		心率感測器
	無GPS訊號 (未定位)		訊息通知		騎乘時間		總里程		藍芽使用中
	GPS訊號微弱		日光節約時間		旅程時間		最大值		記錄中
	GPS訊號良好		背光		設定模式		平均值		目前速度比平均速度快 目前速度比平均速度慢
	電池顯示		上午 下午		踏頻數值		踏頻感測器		
	來電通知		坡度		心率數值		速度感測器		

#### 備註

配對感測器時，請遠離其它藍芽感測器。

詳細操作說明，請前往 [www.giant-bicycles.com](http://www.giant-bicycles.com) > Support > Owners Manuals下載使用者手冊。



#### 按键功能

**A Power/Menu** (⏻ / ☰)

开关机：按此键开启电源。长按此键关闭电源。

菜单：短按进入或离开选单。在子选单中，按此键回到主选单。

**B Backlight/Page** (\* / ▼)

背光：按此键开启或关闭背光。在菜单中，短按可浏览菜单选项。在信息画面时，短按可换页浏览骑行信息。

**C OK/Recording** (▶)

确认：在菜单中，短按进入或确认菜单选项。

**重新设定：同时长按三个按鍵(⏻ / \* / ▶)，放开后即可重新设定装置。**

#### Neostrack app

蓝芽配对与简单设定后，您就能上传纪录至Neostrack app，接收到来电、讯息和电子邮件的通知，自订码表资讯格、校正高度和变更其它进阶设定。

#### 图示说明

	自行车1 / 自行车2		邮件通知		总上升高度 总下降高度		心率区间		心率感测器
	无讯号 (未定位)		讯息通知		骑乘时间		总里程		蓝芽功能使用中
	GPS微弱讯号		日光节约时间		旅程时间		最大值		开始运动记录
	GPS强讯号		背光		设定模式		平均值		当前速度比平均速度快 当前速度比平均速度慢
	电池图示		上午 下午		踏频数值		踏频感测器		
	来电通知		坡度		心率数值		速度感测器		

#### 备注

配对感测器时，请远离其它蓝芽感测器。

详细操作说明，请前往 [www.giant-bicycles.com](http://www.giant-bicycles.com) > Support > Owners Manuals 下载使用者手册。

## Specifications

### NeosGPS

Item	Description
Display	2" Segment Type HTN LCD
Physical Size	73.46 X 48.66 X 17.25 mm
Weight	57g
Operating Temperature	-10°C ~ 50°C
Battery Charging Temperature	0°C ~ 40°C
Battery	Li polymer rechargeable battery
Battery Life	16 hours with open sky
GPS	Integrated high-sensitivity GPS receiver with embedded antenna
BLE Smart	Bluetooth smart wireless technology with embedded antenna
Water Resistant	Water resistant to a depth of 1 meter for up to 30 minutes.
Barometer	Equipped with barometer

## 產品規格

### NeosGPS

項目	說明
碼錶顯示	2"斷碼式HTN LCD
實體尺寸	73.46 X 48.66 X 17.25 mm
重量	57g
操作溫度	-10°C ~ 50°C
電池充電溫度	0°C ~ 40°C
電池	鋰電池
電池使用時間	於開放天空 16 小時
GPS	內嵌平面天線的整合式高感度接收器
智慧藍牙	內嵌平面天線的智慧無線藍牙科技
防水	水下1公尺內浸泡30分鐘的防水保護
氣壓式高度計	內建氣壓式高度計

## 规格

### NeosGPS

项目	描述
显示格信息设定	2" 断码式HTN LCD
尺寸	73.46 X 48.66 X 17.25 mm
重量	57g
操作温度	-10°C ~ 50°C
电池充电温度	0°C ~ 40°C
电池	锂电池
电池时间	16 小时（GPS 开启）
GPS	内嵌平面天线的整合式高感度接收器
智能蓝芽	内嵌平面天线的智慧无线蓝芽科技
防水	水下1公尺内浸泡30分钟的防水保护
气压式高度计	内建气压式高度计

## **Federal Communication Commission Interference Statement**

This equipment has been tested and found to comply with the limits for a Class B digital device, pursuant to Part 15 of the FCC Rules. These limits are designed to provide reasonable protection against harmful interference in a residential installation.

This equipment generates, uses and can radiate radio frequency energy and, if not installed and used in accordance with the instructions, may cause harmful interference to radio communications. However, there is no guarantee that interference will not occur in a particular installation. If this equipment does cause harmful interference to radio or television reception, which can be determined by turning the equipment off and on, the user is encouraged to try to correct the interference by one of the following measures:

- . Reorient or relocate the receiving antenna.
- . Increase the separation between the equipment and receiver.
- . Connect the equipment into an outlet on a circuit different from that to which the receiver is connected.
- . Consult the dealer or an experienced radio/TV technician for help.

***FCC Caution:*** To assure continued compliance, any changes or modifications not expressly approved by the party responsible for compliance could void the user's authority to operate this equipment. (Example - use only shielded interface cables when connecting to computer or peripheral devices).

## ***FCC Radiation Exposure Statement***

This equipment complies with FCC RF radiation exposure limits set forth for an uncontrolled environment. This equipment should be installed and operated with a minimum distance of 0.5 centimeters between the radiator and your body.

This transmitter must not be co-located or operating in conjunction with any other antenna or transmitter.

The antennas used for this transmitter must be installed to provide a separation distance of at least 0.5 cm from all persons and must not be co-located or operating in conjunction with any other antenna or transmitter.

This device complies with Part 15 of the FCC Rules. Operation is subject to the following two conditions:

- (1) This device may not cause harmful interference, and
- (2) This device must accept any interference received, including interference that may cause undesired operation.

## **Industry Canada Statement**

This device complies with Industry Canada licence-exempt RSS standard.

Operation is subject to the following two conditions: (1) this device may not cause interference, and (2) this device must accept any interference, including interference that may cause undesired operation of the device.

Le présent appareil est conforme aux CNR d'Industrie Canada applicables aux appareils radio exempts de licence. L'exploitation est autorisée aux deux conditions suivantes : (1) l'appareil ne doit pas produire de brouillage, et (2) l'utilisateur de l'appareil doit accepter tout brouillage radioélectrique subi, même si le brouillage est susceptible d'en compromettre le fonctionnement.

### IC Radiation Exposure Statement:

This equipment complies with IC RSS-102 radiation exposure limit set forth for an uncontrolled environment. This equipment should be installed and operated with minimum distance 0.5 cm between the radiator and your body.

Cet équipement est conforme aux CNR-102 d'Industrie Canada. Cet équipement doit être installé et utilisé avec une distance minimale de 20 centimètres entre le radiateur et votre corps. Cet émetteur ne doit pas être co-localisées ou opérant en conjonction avec autre antenne ou émetteur. Les antennes utilisées pour cet émetteur doivent être installés et fournir une distance de séparation d'au moins 0.5 centimètre de toute personne et doit pas être co-située ni fonctionner en conjonction avec une autre antenne ou émetteur.