

REGULATORY NOTICES


CB :

- Only use batteries designed for this computer. The wrong battery type may explode, leak or damage the computer.
- Do not remove any batteries from the computer while it is powered on.
- Do not continue to use a battery that has been dropped, or that appears damaged (e.g. bent or twisted) in any way. Even if the computer continues to work with a damaged battery in place, it may cause circuit damage, which may possibly result in fire.
- Recharge the batteries using the Slat PC's system. Incorrect recharging may make the battery explode.
- Do not try to repair a battery pack. Refer any battery pack repair or replacement to your service representative or qualified service personnel.
- Keep children away from, and promptly dispose of a damaged battery. Always dispose of batteries carefully. Batteries may explode or leak if exposed to fire, or improperly handled or discarded.
- Keep the battery away from metal appliances.
- Affix tape to the battery contacts before disposing of the battery.
- Do not touch the battery contacts with your hands or metal objects.

RF Exposure :

This equipment must be installed and operated in accordance with provided instructions and must not be co-located or operating in conjunction with any other antenna or transmitter. End-users and installers must be provided with antenna installation instructions and transmitter operating conditions for satisfying RF exposure compliance. SAR value: 0.645 W/kg.

CE Notice (European Union) :

This symbol  indicates this Slat PC complies with the EMC Directive 2004/108/EC and the European Union's Low Voltage Directive 2006/95/EC. This symbol also indicates that this Slat PC meets the following technical standards:

- EN 55022 — "Limitations and Methods of Measurement for the Radio Interferences of Information Technology Equipment."
- EN 55024 — "Information technology equipment - Immunity characteristics - Limits and methods of measurement."
- EN 61000-3-2 — "Electromagnetic compatibility (EMC) - Chapter 3: Limits - Section 2: Limits on the harmonic current emissions (Equipment input current up to and including 16 A per phase)."
- EN 61000-3-3 — "Electromagnetic compatibility (EMC) - Chapter 3: Limits - Section 3: Limits on the voltage fluctuations and flicker in low-voltage power supply systems for equipment with rate current up to and including 16 A."



NOTE: EN 55022 emissions requirements provide for two classifications.

(1) Class A governs commercial use

(2) Class B governs residential use

Declaration of Conformity for EU countries

Hereby, GIGABYTE, declares that this Slat PC series is in compliance with the essential requirements and other relevant provisions of Directive 1999/5/EC.

BSMI Notice (Taiwan Only)

R32323

- The symbol above must be attached to the product indicating compliance with the BSMI standard.
- Most Slat PC are classified by the Bureau of Standards, Meteorology and Inspection (BSMI) as Class B information technology equipment (ITE).
- Caution: Suggest to operate under 40°C

CCC (China only)

- On Class A systems, the following warning will appear near the regulation label:
- Warning: This is a Class A product. In a domestic environment, this product may cause radio interference, in which case users may be required to take adequate measures.

Federal Communications Commission Notice :

This equipment has been tested and found to comply with the limits for a Class B digital service, pursuant to Part 15 of the FCC rules. These limits are designed to provide reasonable protection against harmful interference in a residential installation. Any changes or modifications made to this equipment may void the user's authority to operate this equipment. This equipment generates, uses, and can radiate radio frequency energy, and if not installed and used in accordance with the instructions, may cause harmful interference to radio communications. However, there is no guarantee that interference will not occur in a particular installation. If this equipment does cause harmful interference to radio or television reception, which can be determined by turning the equipment off and on, the user is encouraged to try to correct the interference by one or more of the following measures:

- Reorient or relocate the receiving antenna.
- Increase the separation between the equipment and receiver.
- Connect the equipment into an outlet on a circuit different from that to which the receiver is connected.
- Consult the dealer or an experienced radio/TV technician for help.
- All external cables connecting to this basic unit must be shielded.

This device complies with Part 15 of the FCC Rules. Operation is subject to the following two conditions:

- (1) This device may not cause harmful interference, and
- (2) This device must accept any interference received, including interference that may cause undesired operation.

Note: The user that change or modifications not expressly approved by the party responsible for compliance could void the user's authority to operate the equipment.

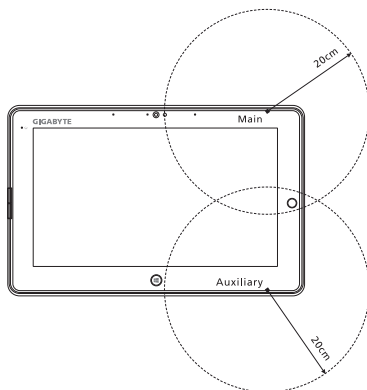
The FCC RF safety requirement:

The radiated output power of the wireless LAN Mini PCI Card and Bluetooth card is far below the FCC radio frequency exposure limits. Nevertheless, the Slate PC series shall be used in such a manner that the potential for human contact during normal operation is minimized as follows:

- (1) Users are requested to follow the RF safety instructions on wireless option devices that are included in the user's manual of each RF option device.



CAUTION: To comply with FCC RF exposure compliance requirements, a separation distance of at least 20 cm (8 inches) must be maintained between the antenna for the integrated wireless LAN Mini PCI Card built in to the screen section and all persons.



NOTE: The wireless Mini PCI adapter implements a transmission diversity function. The function does not emit radio frequencies simultaneously from both antennas. One of the antennas is selected automatically or manually (by users) to ensure good quality radiocommunication.

- (2) An improper installation or unauthorized use may cause harmful interference to radio communications. Also any tampering of the internal antenna will void the FCC certification and your warranty.



CAUTION: Any changes or modifications not expressly approved by the grantee of this device could void the user's authority to operate the equipment

Notice: Canadian users

This Class B digital apparatus complies with Canadian ICES-003.

Remarque à l'intention des utilisateurs canadiens

Cet appareil numérique de la classe B est conforme à la norme NMB-003 du Canada.

VCCI Class B Information:

クラスB情報技術装置

この装置は、クラスB情報技術装置です。この装置は、家庭環境で使用することを目的としていますが、この装置がラジオやテレビジョン受信機に近接して使用されると、受信障害を引き起こすことがあります。

取扱説明書に従って正しい取り扱いをして下さい。V C C I - B

KCC Notice :

- “B” class equipment (telecommunications equipment for household purpose)
- As this equipment has undergone EMC registration for house hold purpose (“B” Class), this product can be used in any area and designed to be used mainly in a household.

Battery Maintenance Guidance

Before you use your Slat PC on the road, you will have to charge the battery pack. The battery pack begins to charge as soon as the Slat PC is connected to external power using the power adapter. Fully charge the battery pack before using it for the first time. A new battery pack must completely charge before the Slat PC is disconnected from external power. It takes a few hours to fully charge the battery when the Slat PC is turned OFF. Please note the battery stops charging if the temperature is too high or the battery voltage is too high.



NOTE: Do not leave the battery pack discharged. The battery pack will discharge over time. If not using a battery pack, it must continued to be charged every three month to extend recovery capacity or else it may fail to charge in the future. Lithium-Ion rechargeable batteries require routine maintenance and care in their use and handling. Read through below instruction and your Slat PC will achieve the maximum battery life span.

Battery Maintenance :

- Do not leave batteries unused for extended periods of time, either in the Slat PC or in storage. When a battery has been unused for 3months, check the charge status and charge or dispose of the battery as appropriate.
- The typical estimated life of a Lithium-Ion battery is about two to three years or 300 to 500 charge cycles, whichever occurs first. One charge cycle is a period of use from fully charged, to fully discharged, and fully recharged again. Use a two to three year life expectancy for batteries that do not run through complete charge cycles.
- Rechargeable Lithium-Ion batteries have a limited life and will gradually lose their capacity to hold a charge. This loss of capacity is irreversible. As the battery loses capacity, the length of time it will power the Slat PC decreases.
- The run time of your battery will vary depending on the product's configuration and the applications that you run. Routinely check the battery's charge status.
- Battery terminals must avoid contact with any metallic substance. For preventing shortage, avoid silver coins, tinsels and any other metallic substances to contact the + and - terminals of the battery. For example, It might happen by inserting the batteries to a coat pocket or a leather handbag with some metallic substances mounted on it (metal buttons or zippers). There is high possibility of causing short circuits and connection damage of the battery.
- Consider replacing the battery with a new one if you note either of the following conditions:
 - (1) The battery run time drops below about 80% of the original run time.
 - (2) The battery charge time increases significantly.
 - (3) If a battery is stored or otherwise unused for an extended period, be sure to follow the storage instructions in P10. If you do not follow the instructions, and the battery has no charge remaining when you check it, consider it to be damaged. Do not attempt to recharge it or to use it. Replace it with a new battery.

Charging :

The Lithium-Ion battery is recharged internally using the AC adapter. To recharge the battery, make sure the battery is installed and the Slat PC is connected to the AC adapter. The charge times will be significantly longer if your Slat PC is in use while the battery is charging. If you want to charge the battery more quickly, put your computer into Suspend mode or turn it off while the adapter is charging the battery. Please always follow the charging instructions provided with your Slat PC.

** If you happen to leave your battery pack to go through an extended period of self-discharge, say more than three months, the battery voltage level will become too low and needs to be Pre-Charged (to bring the battery voltage level high enough) before it automatically resumes its normal Fast Charge. Pre-Charge may take 30 minutes. Fast Charge usually takes 2~3 hours.*

Low Battery State :

When the battery level is low, a notification message appears. If you do not respond to the low battery message, the battery continues to discharge until it is too low to operate. When this happens, your Slat PC goes into Suspend mode. There is no guarantee your data will be saved once the Slat PC reaches this point.



CAUTION: To protect your Slat PC from damage, use only the power adapter that came with it because each power adapter has its own power output rating.

Once your Slat PC goes into suspend mode as a result of a dead battery, you will be unable to resume operation until you provide a source of power either from an adapter or a charged battery. Once you have provided power, you can press the Suspend/ Resume button to resume operation. In Suspend mode, your data is maintained for some time, but if a power source is not provided promptly, the power indicator stops flashing and then goes out, in which case you have lost the data that was not saved. Once you provide power, you can continue to use your computer while an adapter charges the battery.

Storage :

- Charge or discharge the battery to approximately 50% of capacity before storage.
- Charge the battery to approximately 50% of capacity at least once every three months.
- Remove the battery and store it separately from the Slat PC.
- Store the battery at temperatures between 5°C and 20°C (41°F and 68°F).



CAUTION: The battery self-discharges during storage. Higher temperatures (above 20°C or 68°F) reduce the battery storage life.

Handling Precautions :

- Do not disassemble, crush, or puncture a battery.
- Do not short the external contacts on a battery.
- Do not dispose of a battery in fire or water.
- Do not expose a battery to temperatures above 60°C (140°F).
- Keep the battery away from children.
- Avoid exposing the battery to excessive shock or vibration.
- Do not use a damaged battery.
- If a battery pack has leaking fluids, do not touch any fluids. Dispose of a leaking battery pack (see Disposal and Recycling section).In case of eye contact with fluid, do not rub eyes. Immediately flush eyes thoroughly with water for at least 15 minutes, lifting upper and lower lids, until no evidence of the fluid remains. Seek medical attention.

Transportation :

Always check all applicable local, national, and international regulations before transporting a Lithium-Ion battery. Transporting an end-of-life, damaged, or recalled battery may, in certain cases, be specifically limited or prohibited.

Disposal and Recycling :

Lithium-Ion batteries are subject to disposal and recycling regulations that vary by country and region. Always check and follow your applicable regulations before disposing of any battery. Contact your local battery recycling organization. Many countries prohibit the disposal of waste electronic equipment in standard waste receptacles. Place only discharged batteries in a battery collection container. Use electrical tape or other approved covering over the battery connection points to prevent short circuits.

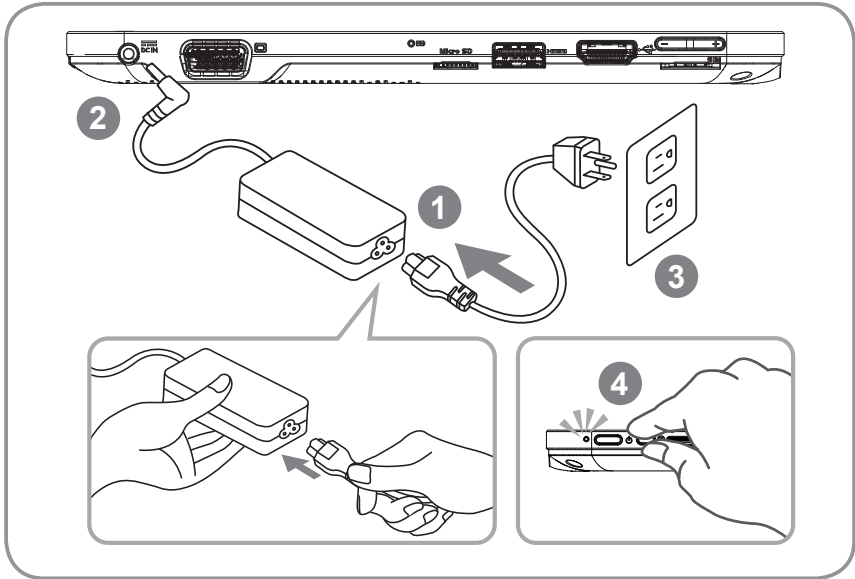


The symbol of the crossed out wheeled bin indicates that the product (electrical and electronic equipment) should not be placed in municipal waste. Please check local regulations for disposal of electronic products.

Congratulations on your purchase of the GIGABYTE Tablet PC!

This manual will help you to get started with setting up your Slate PC. The final product configuration depends on the model at the point of your purchase. GIGABYTE reserves the right to amend without prior notice. For more detailed information, please visit our website at <http://www.gigabyte.com>

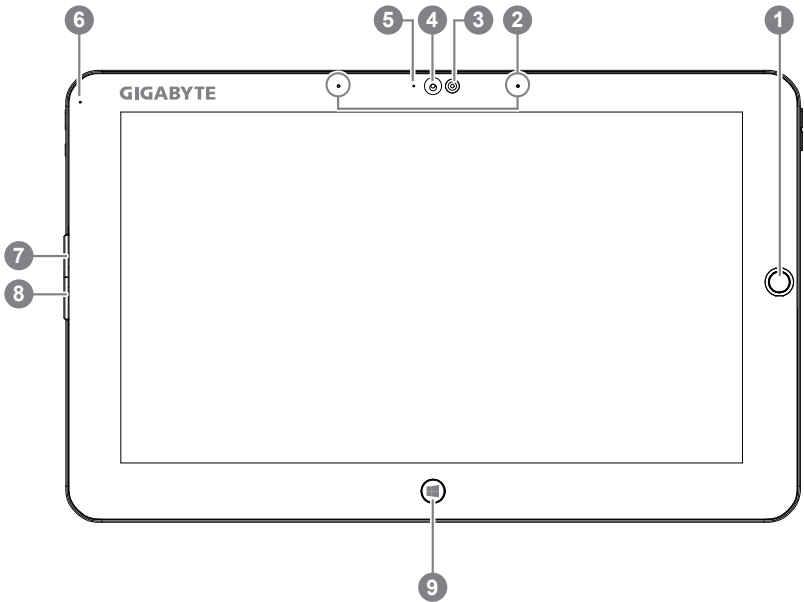
1 Using GIGABYTE Slate PC for the First Time



- 1 Connect the power cord to the AC adapter.
- 2 Connect the AC adapter to the DC-in jack of the Slate PC.
- 3 Connect the power cord to the power outlet.
- 4 While the Battery Indicator lights on, press the Power Button to turn on the Tablet PC

2 GIGABYTE Tablet PC Tour

Panoramic View



1 Directing Hot Key ❶

2 Microphone

3 Light sensor

4 Webcam

5 Webcam Indicator

6 Power Status Indicator

7 Left Button of Mouse

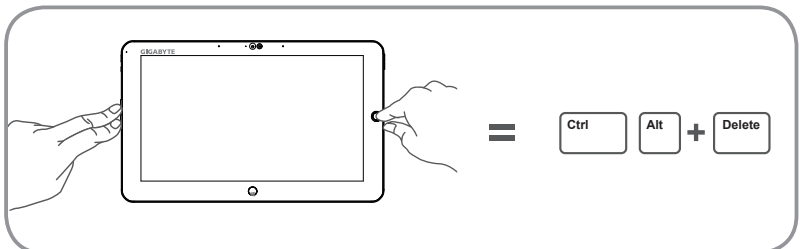
8 Right Button of Mouse

9 Windows Button ❷

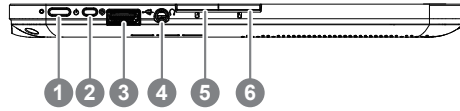
❶ To control mouse direction; press the directing hot key to simulate as left key of mouse.

❷ Back to Windows 8 Style UI mode. Resume from sleep or hibernate mode.

Tip: "Left click + Right click of mouse + Directing Hot Key" operate as the function of "Ctrl+Alt+Del".

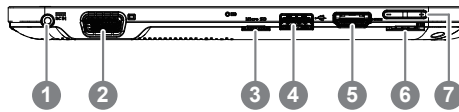


Left View



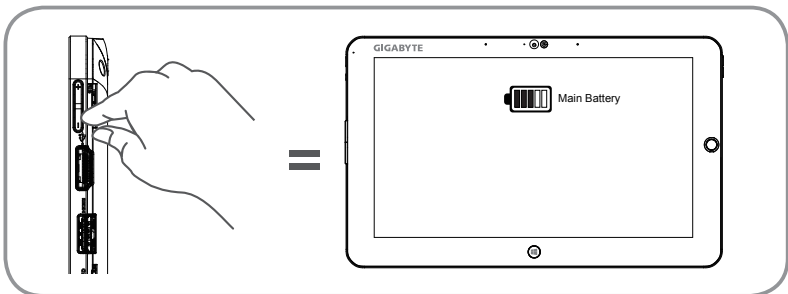
- | | |
|---|--|
| <p>1 Power Button</p> <p>2 Rotation Lock Button</p> <p>3 USB Port</p> | <p>4 Headphone-in</p> <p>5 Left Button of Mouse</p> <p>6 Right Button of Mouse</p> |
|---|--|

Right View

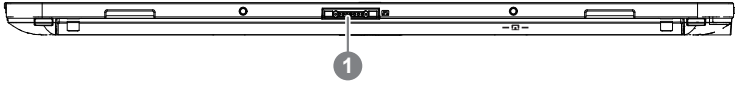


- | | |
|---|---|
| <p>1 DC-in</p> <p>2 D-sub (VGA) Port</p> <p>3 Micro SD Card Reader</p> <p>4 USB Port</p> <p>5 HDMI Port</p> <p>6 SIM Card Slot</p> <p>7 Volume Control Key </p> | <p> Press "+" or "-" to control volume.</p> <ul style="list-style-type: none"> • Press and release the Power button to turn on the operation system. Press "+" to enter into GIGABYTE BIOS Setup Utility. USB Keyboard is recommended to use for setting up BIOS functions under GIGABYTE BIOS Setup Utility. • Press and release the Power button to turn on the operation system. Press "-" to enter into GIGABYTE System Recovery. Use Directing Hot Key to operate GIGABYTE Smart Recovery. |
|---|---|

Tip: Press the "-" volume button when the computer is off and the display will indicate the battery capacity status.

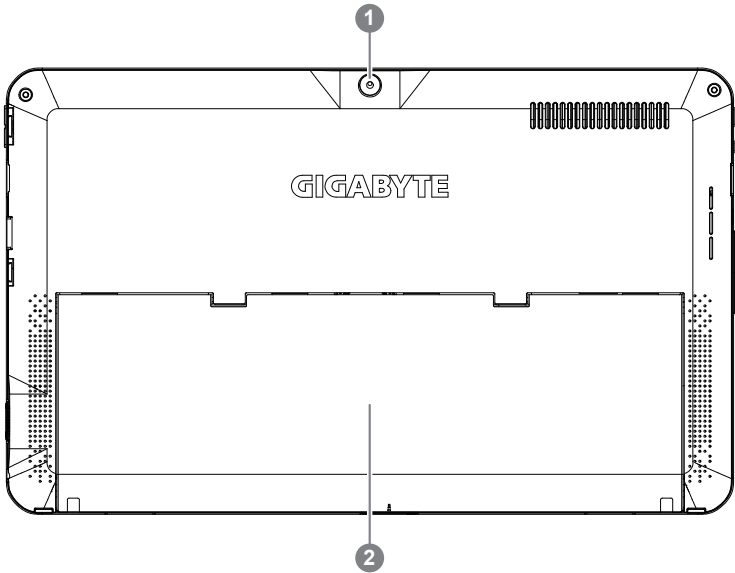


Base View



1 Keyboard docking connection port

Back View



1 Rear Camera
2 Kickstand ④

④ Enjoy movies and entertainment without any hassle by simply unfold the stand

3 GIGABYTE Software Application

■ GIGABYTE Smart Manager

You can activate GIGABYTE Smart Manager by double clicking on the shortcut icon on the desktop if the machine you purchased has the operation system built-in. GIGABYTE Smart Manager is an icon-based control interface, enabling users to intuitively access common system setup as well as GIGABYTE exclusive utilities. Please be noted that the GIGABYTE Smart Manager interface, icons, utilities and software versions may vary based on the purchased models. Please operate GIGABYTE Smart Manager according to the default built-in version.

■ GIGABYTE Driver Update Utility

You can search devices driver and update it online by double clicking on the shortcut icon on the desktop if the machine you purchased has the operating system built-in. GIGABYTE Driver Update Utility can search the latest drivers and be downloaded automatically. Users are able to tell from the driver version on the machine and online that decide to update drivers.

■ GIGABYTE Smart Recovery

- If the machine you purchase already has operating system built-in, you can restore the system back to factory default by using GIGABYTE Smart Recovery. Please be noted that the GIGABYTE Smart Recovery interface, icons, utilities and software versions may vary based on the purchased models. Please operate GIGABYTE Smart Recovery according to the default built-in version.
- Please be noted that personal data will be lost after recovery, do remember to backup any data before operating this function.

■ Activate GIGABYTE BIOS Setup Utility and Smart Recovery

- Press and release the Power Button to turn on the operation system. Press "+" to enter into GIGABYTE BIOS Setup Utility. It is recommended to use USB keyboard for setting up BIOS functions under BIOS setup Utility.
- Press and release the Power Button to turn on the operation system. Press "-" to enter into GIGABYTE System Recovery. Use Directing Hot Key to operate GIGABYTE Smart Recovery.

4 Appendix

■ **Warranty & Service :**

Warranty and service and related information please refer to the warranty card or GIGABYTE service website as the below link:
<http://www.gigabyte.com/support-downloads/technical-support.aspx>

■ **FAQ :**

FAQ (Frequent Asked Questions) please refer to the below link:
<http://www.gigabyte.com/support-downloads/faq.aspx>