

# **GIGABYTE™**

## **USERS' MANUAL**

**Aivia M8600 Wireless Macro Gaming Mouse**

**Model: 28715860000CBS**

**Aivia M8600 Wireless Macro Gaming Mouse Receiver**

**Model: 28715860000CBS-RX**

## **Aivia M8600 Wireless Macro Gaming Mouse**

Aivia, an integrated acronymic word, is derived from its key features – advanced, intuitive, and versatile interface archetype. The series is to emphasize the combination of subconscious, design and function as well as the pursuit of archetype. GIGABYTE believes each mouse and keyboard are the scrupulous work of mankind’s brainpower. Aivia is not only an extension to the human intellect, but also an intuitive extension to the use of artificial intelligence.

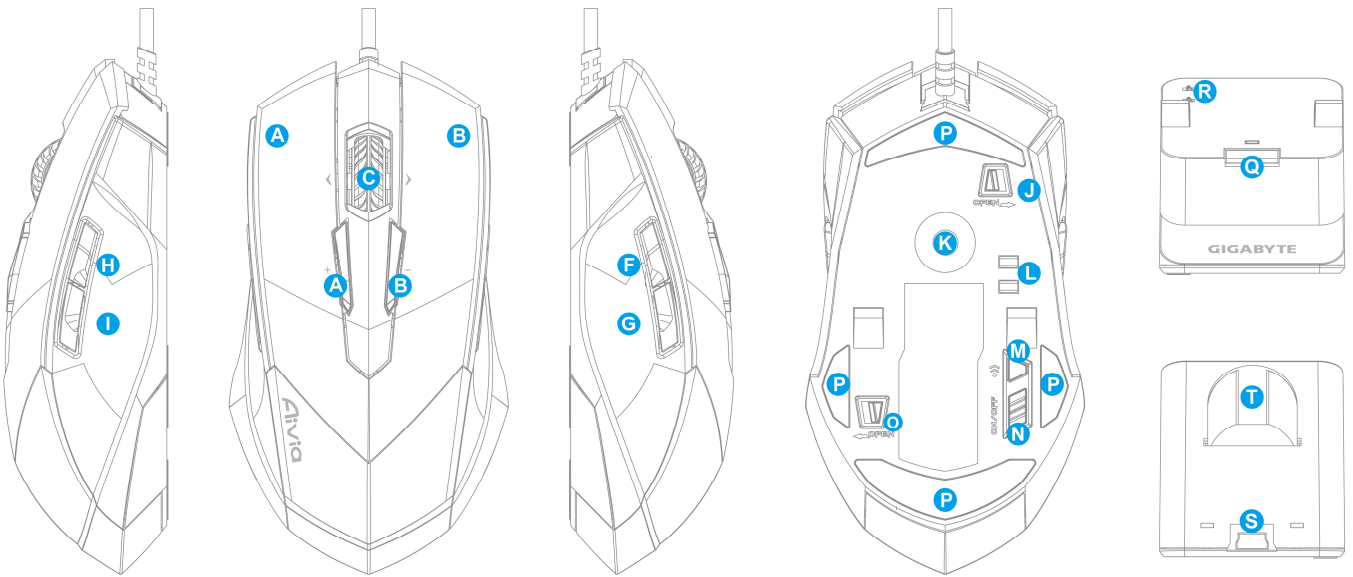
The Aivia M8600 has unleashed the limitation and been designed to set you free from cord while achieving the tough mission in game play. Having ultra-high precision and 2.4GHz gaming-grade wireless technology, Aivia M8600 not only shows its excellent performance but also incredible fast transmission even as a wireless gaming mouse. The battery life persists over 24 continuous hours in the gaming mode, joint the unique QSBS™ Technology – Quick-swap Battery System, makes it a fast and lag-free gaming mouse.

32KB onboard memory enables 5 profiles set on your M8600, and allows you to bring your personal settings wherever you go. Combine that with 5600DPI and 1000Hz report rate, the Aivia M8600 now becomes your extreme weapon than ever.

### **Feature**

- GamePlay™ Wireless Technology
- Over 24hr battery life in game play
- Dual mode wired/ wireless functionality
- GHOST™ Macro Engine

## Mouse Introduction



### Default button assignments

- A Mouse button 1 – Left Click
- B Mouse button 2 – Right Click
- C Mouse button 3 – Middle Click and 4 ways Scrolling Wheel
- D Mouse button 4 – DPI Switching Up
- E Mouse button 5 – DPI Switching Down
- F Mouse button 6 – Forward
- G Mouse button 7 –Back
- H Mouse button 8 –Profile Change
- I Mouse button 9 – No function (reserved for the left hand mode)
- J Cable Lock/ Unlock Switch
- K Pro-laser Gaming Sensor
- L Battery Charging Connector
- M ID Connecting Button
- N Power on/off Switch
- O Battery Lock/Unlock Switch
- P Ultra-Durable™ Teflon feet
- Q Connecting Button
- R Charging Contact Bounce
- S Connector Jack for mini USB cable
- T Battery inserted jack

## **Installation**

### **Wireless Mode**

1. Insert the battery into M8600
2. Switch on M8600.
3. Connect the Charging Dock to your computer with the mini-USB cable.
4. Press the connecting buttons on M8600 and Charging Dock at the same time. When the pairing process is completed, your M8600 is then ready for use in wireless mode.
5. To charge M8600 in wireless mode, just place it on the Charging Dock. There is also a spare charging battery to replace. Alternatively, M8600 can be charged through the mini USB cable as a wired mode.
6. To replace the battery with the spare battery, push the battery switch to the left as shown. The battery will pop out instantly.

### **Wired Mode**

1. Connect the mini-USB end of the cable to M8600.
2. Plug mouse into the USB port of your computer. M8600 is then ready for use as a wired mouse. Besides, its battery will start charging automatically in this wired mode.
3. To remove the cable, push the cable switch to the right as shown before pulling out the mini-USB connector.

### **Charging Method**

There are three different charging methods below.

- Place M8600 on the charging dock connected to your PC. There will be running green light on the front side of mouse to indicate charging process.
- Insert your battery to battery inserted jack of the charging dock. Connect the charging dock to your PC. The red light on charging dock will turn into green to indicate charging process. When the battery is fully charged, the LED on charging dock will come back to red light.
- Connect M8600 to your PC with the mini USB cable as a wired mode. The mouse will start charging automatically.

## **LED Light System**

M8600 has a profile/Battery/Sensitivity LED indicator on its front side, which displays the status of profile/ battery life/sensitivity/ stage.

### **PROFILE INDICATOR**

The LED color of mode indicator would change along with profile switch. There are 5 different LED colors corresponding 5 profiles to change over on the mouse. The LED color could be selected from the GHOST Engine software based on your preference.

### **BATTERY INDICATOR**

The GREEN LEDs show the rest battery life:

61 - 100% Battery: 3 green arrow LEDs

31 - 60% Battery: 2 green arrow LEDs

11 - 30% Battery: 1 green arrow LED

Less than 10% Battery: 3 green arrow blinking LEDs

### **SENSITIVITY STAGE INDICATOR**

The LEDs will turn into RED light while adjusting sensitivity.

- Sensitivity Stage 1: 1 red LED
- Sensitivity Stage 2: 2 red LEDs
- Sensitivity Stage 3: 3 red LEDs
- Sensitivity Stage 4: full red LEDs

## **GHOST™ Macro Engine**

GHOST™ Macro Engine supports Windows 98, Windows 2000, Windows XP, and Windows7. Install the software to assign buttons and set up your personal profile.

Please make sure to connect your M8600 with mini USB cable to the PC as a wired mode while editing the function through GHOST™ Engine software. (In a wireless mode, you are only allowed to change sensitivity, left-handed/right-handed mode, and gaming/power saving mode in GHOST™ Engine.)

### ■ **Left-hand/Right-hand Mode**

Aivia M8600 is designed both for left-handed and right-handed user. You may simply switch the left hand/ right hand mode from the selection button of GHOST™ Engine. The description of the buttons then will swap around automatically.

### ■ **Gaming mode/ Power Saving Mode**

- Gaming mode:  
The mouse will go through standby stage for further action. Therefore, it would consume more energy as gaming mode.
- Power Saving mode:

### ■ **BUTTON ASSIGNMENT**

User can assign various functions to buttons from both "BASIC FUNCTION" and "MACRO SCRIPTS". All you have to do is drag the function icon and simply drop to the button you would like to assign. Remember that you may edit each macro script in the "MACRO EDITING" tab.

There are five default color LED lights on the panel which indicate five different profiles set up by users. Each individual profile can be assigned various settings to 9 customizable buttons. Moreover, you can also change the color of LED light for each profile (There are 7 colors and a light-off mode to choose from).

## ■ **MACRO EDITING**

The macro editing tab allows you easily to record all the commands, including key bindings and the press of mouse button.

Each single macro also can be imported and exported onto your hard disk for further usage.

### **Start with:**

Step1 Click "Record the duration or intervals" if you'd like to record intervals between two commands.

Step2 Double-click "Cycle through selection of action mode" to change the execute mode.

Step3 Click "Record" to start creating a macro and recording all the keystrokes or mouse commands.

Step4 Click "Stop" to finish recording this macro when a macro is done.

Step5 You can also insert additional commands on the "**Quick-insert bar**" left.

Step6 After recording a macro, you may drag commands of the macro and drop into "On-board script" to store this macro on the mouse.

Step7 Double-click on the macro scrip to rename this macro. Moreover, you may also change icon of your personal macro through clicking "change icon".

Step8 Come back to "Button Assign" tab, the macro you had built would become one application of "Macro scrip" in this tab.

### **Learn more:**

#### **Record the duration or intervals (Time lag)**

If this function is marked, it allows you to record the intervals between two commands.

#### **Cycle through selection of action mode**

- Execute once:

To execute a macro once.

- Loop mode:

Re-pressing to stop: Executing a macro continuously, and re-pressing the assigned button to stop the running macro.

- Fire-button mode:

Executing a macro continuously until you release the assigned button.

## **Export**

To export your macro to the PC.

## **Import**

To import a macro to the macro editing in GHOST engine application program.

## **Re-edit the macro**

Dragging the macro script back to macro editing allows you to re-edit this macro.

## **■ SENSITIVITY/ SCROLLING**

### **Sensitivity**

As default setting, there are three sensitivity stages: 800, 1600, 3200 and 5600DPI (dots per inch). You can set up preferred sensitivity value of three sensitivity stages , then you can simply adjust through on-the-fly switch . Check "set X and Y axis separately" option to adjust X-Y sensitivity levels.

### **Report rate**

The report rate determines the time intervals that your PC retrieves data from your mouse. You can set the report rate to 125Hz (8ms), 250Hz (4ms), 500Hz (2ms), or 1000Hz (1ms) by moving the knob on the slider

### **Scrolling**

You can adjust vertical & horizontal scroll wheel speed by moving the knob on the slider.



## **Product Specification**

Mouse and Receiver:

Antenna Gain=0dBm

Operating Frequency: 2402/ 2439/ 2450/ 2411/ 2468/ 2425/ 2447/  
2479MHz

Channel Number: 8 channels

Transmitter Output Power: 0 dBm

Modulation:2.4G GFSK modulator

Operating Temperature Range: 0°C(32°F) ~ 40°C(104°F)

Power Type of wireless module:

Mouse : Battery supply voltage

Receiver : NB or PC USB Port Supply Voltage

## **Battery (assembled in the mouse)**

Battery Pack: BURNABY INTERNATIONAL TECHNOLOGY

Model: SANYO NP 80/ 3.7Vdc 1500mAh

## **Safety**

### **Caution:**

- Please DO NOT directly look into the laser beam.
- Risk of explosion if battery is replaced by an incorrect type
- Dispose of used batteries according to the instruction

### **Important information:**

Long period of repetitive motion using an improperly set-up workplace, or incorrect body posture may be associated with physical discomfort and injury to nerves, tendons, and muscles.

### **FCC Declaration:**

- This device has been tested and found to comply with the limits for a Class B digital device, pursuant to Part 15 of the FCC Rules. These limits are designed to provide reasonable protection against harmful interference in a residential installation. This equipment generates, uses and can radiated radio frequency energy and, if not installed and used in accordance with

the instructions, may cause harmful interference to radio communications. However, there is no guarantee that interference will not occur in a particular installation. If this equipment does cause harmful interference to radio or television reception, which can be determined by turning the equipment off and on, the user is encouraged to try to correct the interference by one or more of the following measures:

- Reorient or relocate the receiving antenna.
  - Increase the separation between the equipment and receiver.
  - Connect the equipment into an outlet on a circuit different from that to which the receiver is connected.
  - Consult the dealer or an experienced radio/TV technician for help.
- This device complies with part 15 of the FCC Rules. Operation is subject to the following two conditions: (1) This device may not cause harmful interference, and (2) this device must accept any interference received, including interference that may cause undesired operation.

**FCC Caution:**

- Changes or modifications not expressly approved by the party responsible for compliance could void the user's authority to operate the equipment.
- The antenna(s) used for this transmitter must not be co-located or operating in conjunction with any other antenna or transmitter.