

# G-MAX™ GM-FPB

## Quick Start on Presentation Remote

### Requirements:

- \* A device that features USB port
- \* Windows 98Se, Me, 2000, XP
- \* Mac OS 9.1 or its newer version, Mac OS X (10.1) or its newer version

### Starting to use the Remote:

1. Insert battery into the RF Remote.
2. Connect the **RF Receiver** to an USB port.

**Windows:** Windows will detect the new hardware and install appropriate software via the New Hardware Wizard. Please have your Windows System CD-ROM ready in case the Wizard asks for it.



3. See below for details on how to use the RF Remote Control.

### Using the Presentation Remote:

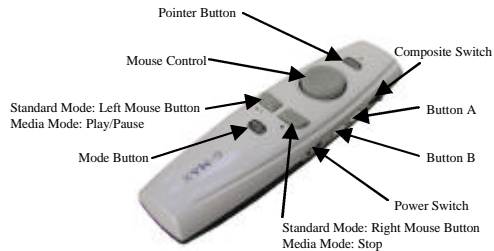
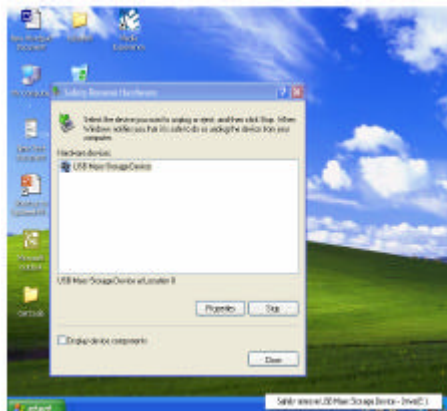
The remote features two modes that are controlled via the Mode Button. Hold down the Mode Button for 2 sec to switch one mode to another. When the Mode Button is not lit in green, the remote is in Standard Mode. When the Mode Button is lit in green, the remote is in Media Mode.

### Using the Presentation Remote's Laser Pointer:

When you turn on the Power Switch Button the Laser Pointer will be activated automatically. The **Mode Button** will be lit in red when the Laser Pointer Button is pressed. To deactivate the Laser Pointer, simply turn off the Power Switch Button.

### Using the RF Receiver with Flash Memory to Store Data

The RF receiver is not just a device that connects to the remote control. It also features the functionality of data storage. When you plug in the RF receiver into a USB port, your computer will recognize the device automatically by showing "Found New Hardware" at the lower right on your windows task bar. You can use it as a flash disk that you can carry around. Please click on the windows task bar to safely remove the device, the window should appear as the picture below.



	Standard Mode	Media Mode	
Laser Lens	Laser on/off	-----	
Power Switch	Power Switch	Power Switch	Remote Power on/off
Mouse Control	Mouse X-Y	Mouse X-Y	Mouse curse control
Right Mouse	Right Mouse	■	Stop
Left Mouse	Left Mouse	⏮/⏭	Play/Pause
Mode Button	Mode	Mode Switch	Hold down Mode Button for 2 sec to switch to the Media Mode. (see Remark 1)
Composite Switch	Up: Line Up	🔊	Up: Volume up
	Down: Line Down	🔊	Down: Volume down
	Push: Drag	🔊	Push: Mute
Button A	Full Screen/ESC (see Remark 2)		Call Windows Media Player
Button B	Black/ESC	⏮	Next track

**Remark:**

### Changing the Remote's ID / Trouble Shooting:

1. You can have several remotes working simultaneously. To do this, each Remote must have a unique ID to avoid interference with each other.
  - 1-1. Press the Mode Button and Button A together for at least 2 seconds to activate the green LED.
  - 1-2. Then press Receiver Button on the receiver, the receiver will be in standby mode. Then press mouse control button, a new ID will be enabled.
  - 1-3. Once the battery is removed, the ID will go back to the initial setting. To have a specific ID you will have to repeat the steps 1-1 to 1-2.
  - 1-4. If the receiver button is pressed for over 40 seconds, the receiver will go back to the initial setting. To retrieve the ID you will have to repeat steps 1-1 to 1-2.
2. While the same button is pressed for over 40 seconds, it will stop working automatically to avoid careless touch.

Receiver Button











**Remark**

1	Standard Mode Media Mode	Mode Button	When you are at Standard Mode, hold down the Mode Button for 2 sec, then press Button A to enable Media Mode. When you are at Media Mode, press the Mode Button will switch back to Standard Mode.
2	Function Switch	Full Screen/ESC	The default setting is full screen. Press button A for at least 2 seconds to switch to the normal display.

2. The laser beam turns off automatically when it is idled for over 30 minutes.  
 3. In Windows 98SE O/S, you need to install driver for Flash Memory Device. Please go to GIGABYTE website ([www.gigabyte.com.tw](http://www.gigabyte.com.tw)) to download the latest device driver.  
 4. **DO NOT** point the laser pointer at someone else's eyes, or look steadily at the laser beam.

## Wireless Remote Hot Keys for Windows Media Player

No.	Hot key	Key Function	98 SE	ME	2000	XP	Note
1		Power key	X	V	X	V	CD control keys
2		Previous track	X	V	X	V	
3		Next track	X	V	X	V	
4		Play/Pause	X	V	X	V	
5		Stop	X	V	X	V	
6		Volume up	V	V	V	V	
7		Volume down	V	V	V	V	
8		Mute	V	V	V	V	

PS: In Windows 98 SE and Win 2K O/S, you need to upgrade the Media player from Microsoft Website, and then the item (2-5) will work properly except for Power key.

**Certification:**

## 1) FCC:

FCC ID: JCKGMFPB-01
---------------------

**FCC Guideline:**

This device complies with part 15 of the FCC Rules.  
 This device may not cause harmful interference.  
 This device must accept any interference received, including interference that may cause undesired operation.

## Caution:

Any changes or modifications not expressly approved by the party responsible for compliance could void the user's authority to operate the equipment.

## 2) CE:



## 3) DGT:



## 4) BSMI:



R33006