

## The Virtual Server Screen

### The PPPoE/DHCP/Static Tab

A Virtual Server allows computers on the WAN side of the network to connect with a PC server on the LAN side of the network.

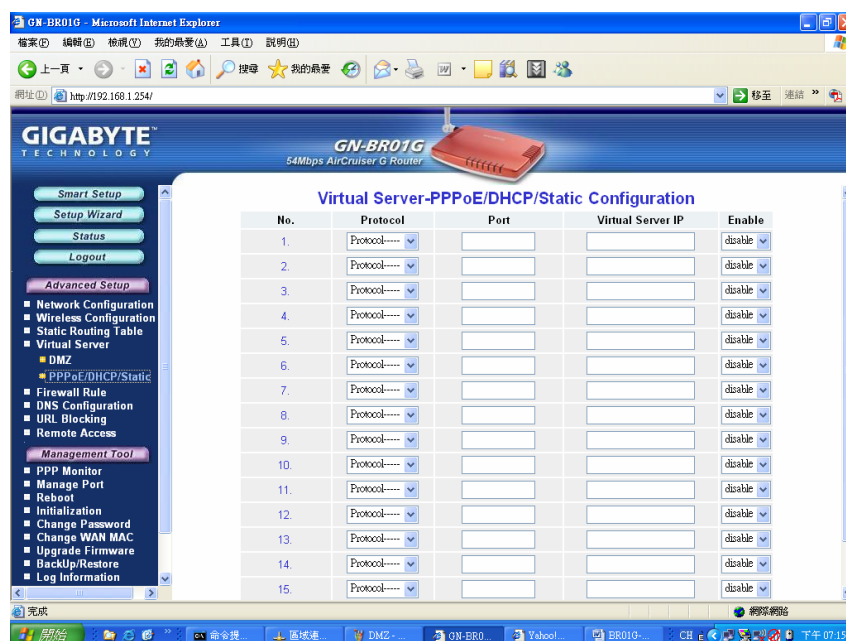


Figure 6-10 – Virtual Server setup

For example, a PC on the LAN side with an IP address of 192.168.1.1 would have the following virtual server settings:

- **Protocol:** TCP
- **Port:** 21
- **Virtual Server IP:** 192.168.1.1
- **Enable:** enable

In this case, any PC on the WAN side of the network can connect to the internal FTP server (192.168.1.1) using the IP address on the WAN end of the AirCruiser G Wireless Router.

## The DMZ Tab

The DMZ feature allows you to specify the IP address of the computer that will be placed outside the firewall of your network.

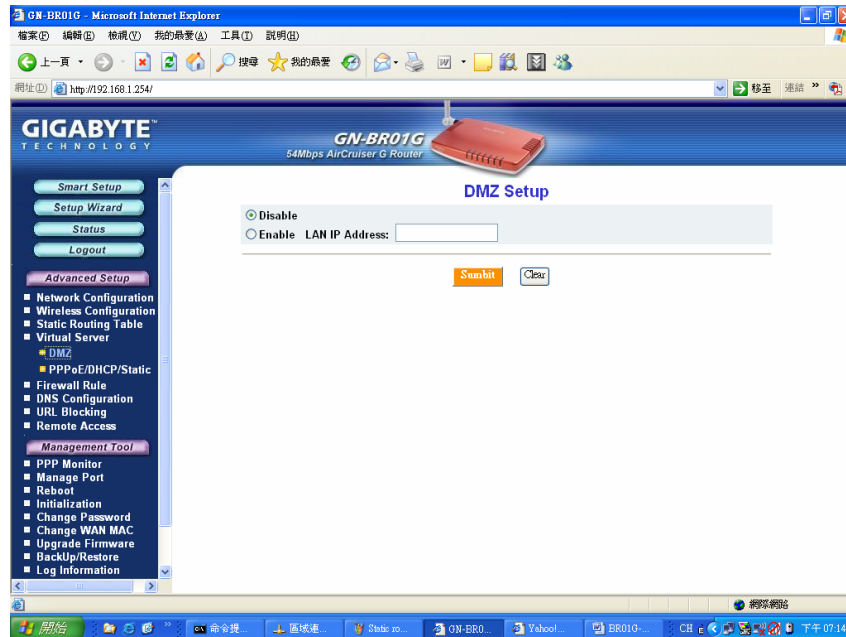



Figure 6-11 – DMZ setup

With a firewall setup, it is often necessary to place some clients outside of the firewall while leaving the others protected. You can do this using a Demilitarized Zone (DMZ) to test or configure some applications (e.g. Internet games, video conferencing, or VPN connections) or create a server connecting to the Internet through the Intranet. Enter the IP Address of your computer (e.g. 192.168.1.2) into the LAN IP Address field and click the **Submit** button.

	<p>Note: DMZ servers pose a security risk. A computer designated as the default DMZ server loses much of the protection of the firewall, and is exposed to exploits from the Internet. If compromised, the DMZ server can be used to attack your network.</p>
---	---

## The Firewall Rule Screen

The Firewall Rule screen displays your network security settings. Use this screen to quickly create network security policies to prevent unauthorized access to your network.

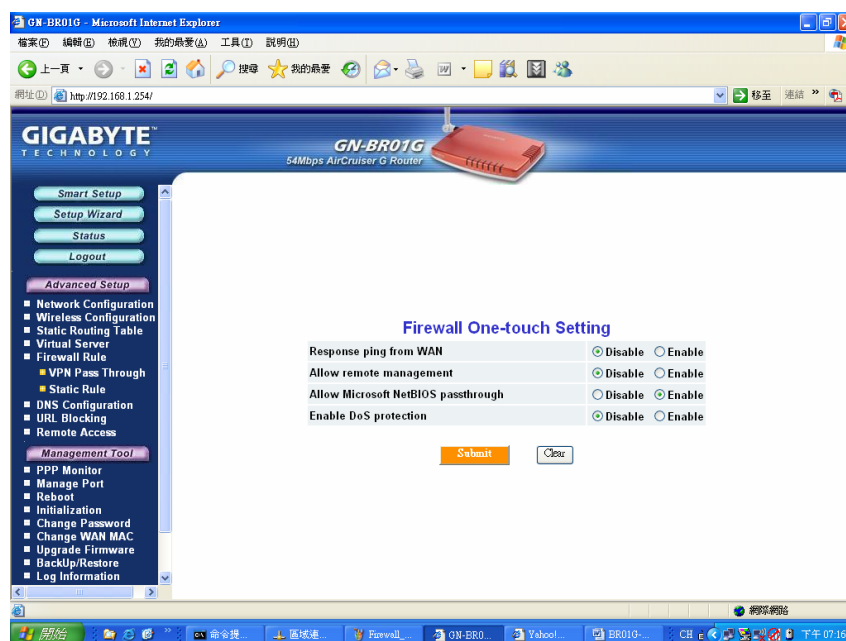


Figure 6-12 – Firewall One Touch settings

### Response Ping From WAN

When enabled, prevents this Router and its privately assigned IP addresses from being broadcasted to the Internet.

### Allow Remote Management

When enabled, allows remote configuration access via the Internet (WAN), else only local (LAN) access is allowed.

### Allow Microsoft NetBIOS Pass-through

A File and Printer sharing security, that when enabled, only allows NetBIOS.

### Enable DoS Protection

When enabled, Denial of Service type attacks are prevented.

## The DNS Configuration Screen

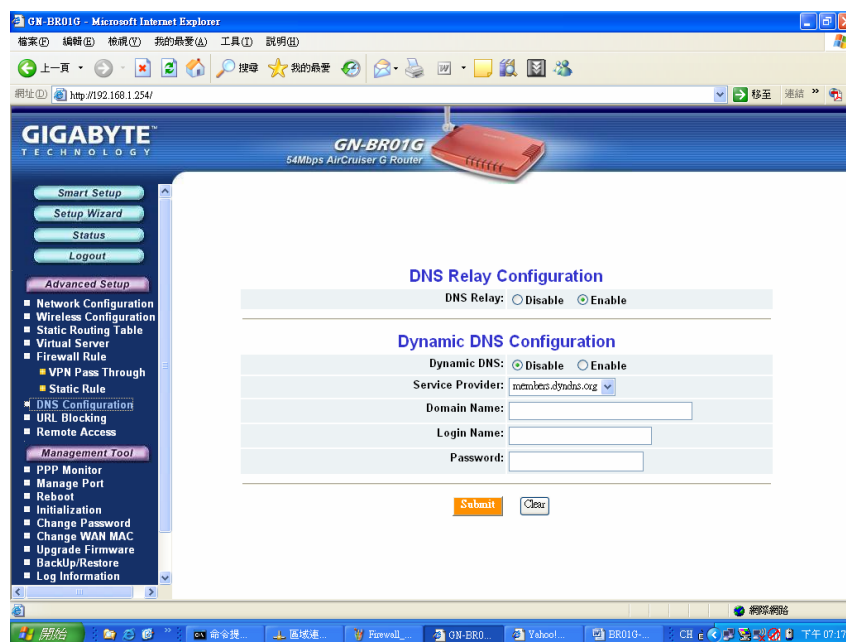


Figure 6-13 – DNS Config screen

### DNS Relay

DNS Relay will set your PC's DNS entries to point to the Router's Gateway address, which will then forward DNS queries to the DNS server used by the Router. This is needed when using DHCP to assign IP address to the PC's in you LAN. The default value of DNS relay is **Enable**.

### Dynamic DNS

The AirCruiser G Wireless Router offers a **Dynamic Domain Name Server** (DDNS) service that allows you to assign a fixed host and domain name to a dynamic Internet IP address. This gives Internet users the ability to connect with a virtual sever using a FQDN, rather than with an IP address. Before using this feature, you must first register an account with the dynamic DNS service. (<http://www.dyndns.org>)

**Service Provider**

From this pull down menu, enter the DDNS service with which you have membership.

**Domain Name**

This is the DDNS URL assigned by the DDNS service.

**Login Name**

Enter the User Name for your DDNS account.

**Password**

Enter the Password for your DDNS account.

**Wildcards**

If your dynamic DNS provider allows using wildcards in resolving your URL, you may select Enable to activate this function.

## Remote Access Screen

### Wake On LAN Table

With Wake-on-LAN, a router user can keep his systems turned off while away and simply click the Wake On LAN activation button on this page to remotely instruct the AirCruiser G to boot up the host system. You also have the option of Wake On & Enable NETBIOS services of any PC in the local LAN Domain. For this feature, you need either the IP address or the MAC address of your LAN devices. Key in either values, click enable, and press Wake On LAN to perform the function.

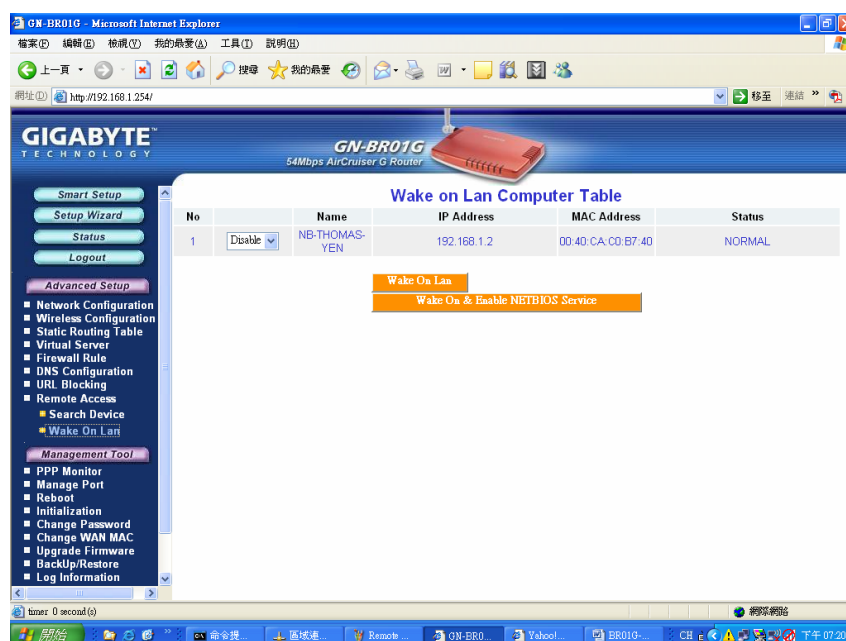


Figure 6-14 – Wake on LAN

### IP Address

The IP Address of the LAN network device which you want to wakeup

### MAC Address

The MAC Address of the LAN network device which you want to wakeup

## Chapter 7 Using Management Tools

The instructions in this chapter will help you how to use the management tools of the web-based utility to effectively manage your AirCruiser G Wireless Router.

### The PPP Monitor Screen

The **PPP Monitor** screen displays the WAN (Internet) connection status. Click the **Disconnect** button to end your current session. Click the **Connect** button to re-connect to the ISP.

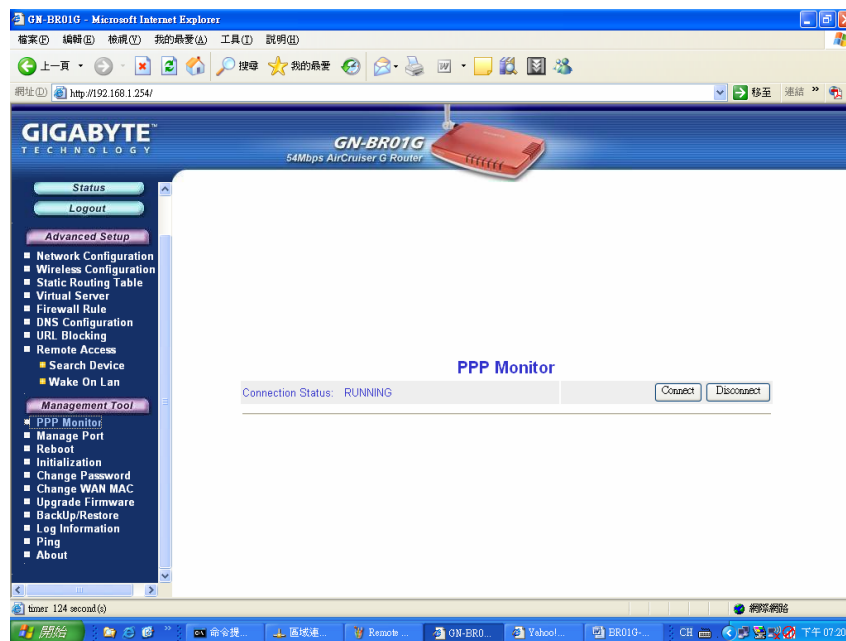


Figure 7-1 – PPP Monitor Screen

## Manage Port Configuration Screen

The **Manage Port Configuration screen** allows you to change the port on which the AirCruiser's configuration utility runs. The default is Port 80 but users can change this to any port they wish (like 8080, 8000 or else port). In this case, to access the AirCruiser G configuration utility, you would type `http://192.168.1.254:8080`

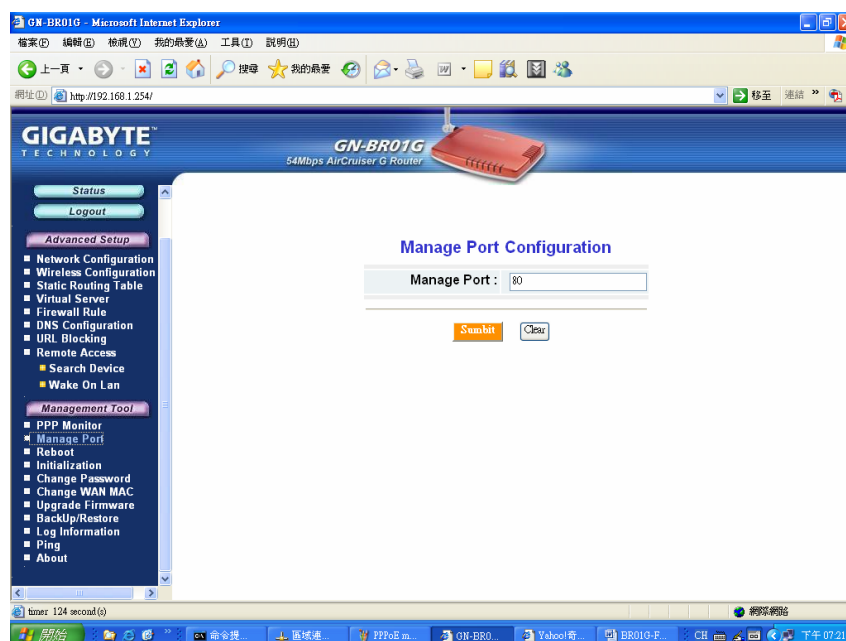


Figure 7-2 – Manage Port Config screen



## The Reboot Screen

The Reboot screen allows you to reboot the AirCruiser G Wireless Router. You are also automatically brought to this screen after you confirm OK to any change of Router settings.

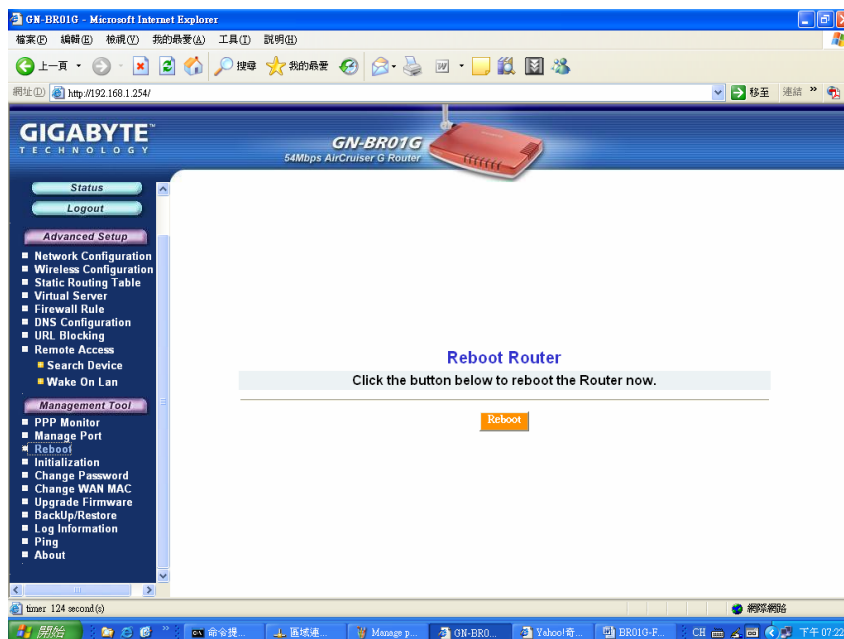


Figure 7-3 – Reboot Router

## The Initialization Screen

The **Initialization** screen allows you to reset the AirCruiser G back to its original factory settings. To initialize the router, use the tip of a pencil or a paperclip to press and hold the **init** button for 5 seconds and release.

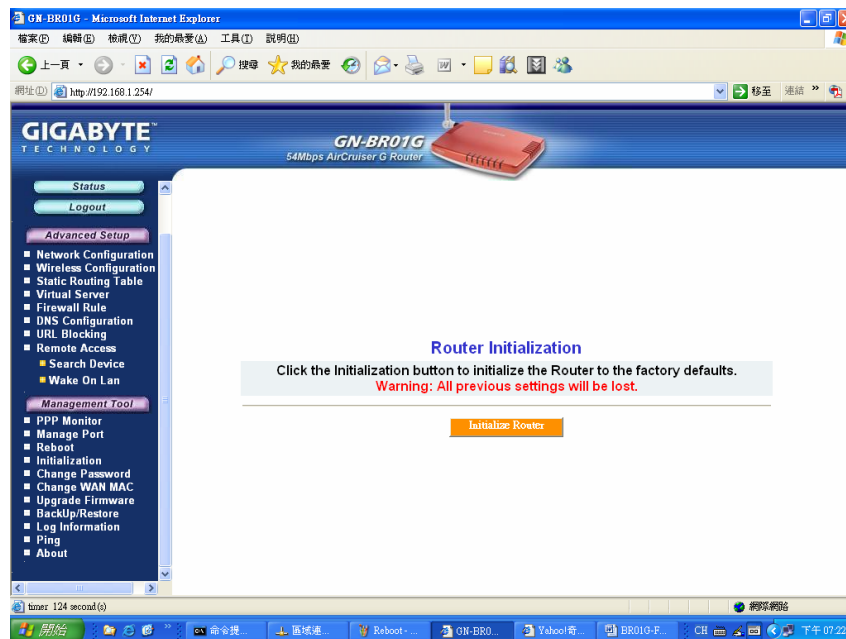


Figure 7-4 – Router Init Screen

## The Change Password Screen

The **Change Password** screen allows the administrator to create a new password for the AirCruiser G. To change an existing password, enter your account and new password and after re-typing the password to confirm, click the **Submit** button.

**Note:** Remember to enter this *new* password when logging into the AirCruiser G Wireless Router.

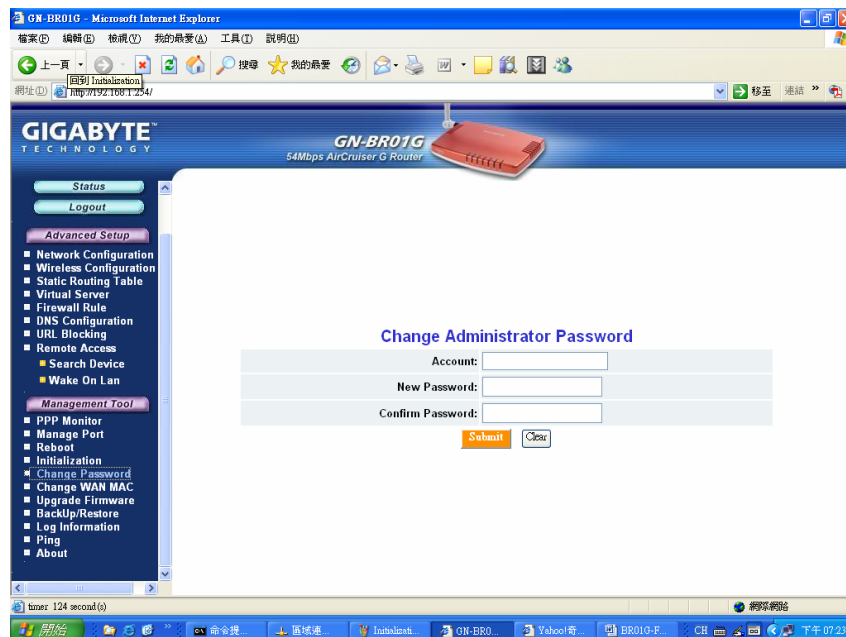


Figure 7-5 – Change Password

## The Change WAN MAC Screen

The **Change WAN MAC** screen allows you to assign a new MAC address. If your ISP asks you to use the original MAC address, chose the **Assign WAN MAC** option and enter a new WAN MAC address in the **New WAN MAC Address** field and click the **Submit** button. If you want to restore the factory default MAC address, choose the **Restore Default WAN MAC** option and click the **Submit** button.

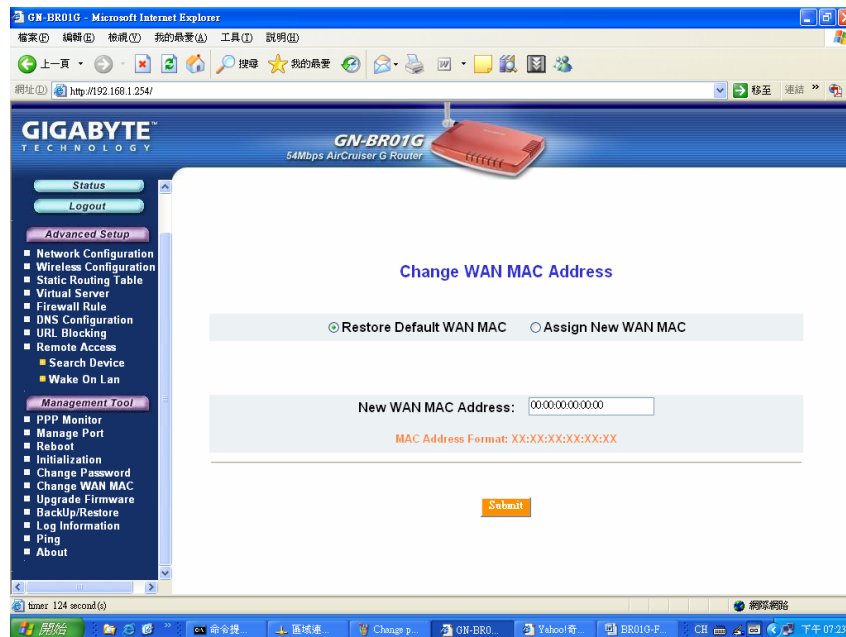


Figure 7-6 – Change WAN MAC address

## The Upgrade Firmware Screen

The Upgrade Firmware screen allows you to update the current AirCruiser G Wireless Router firmware to the latest version directly from the GIGABYTE website. Click the Browse button to locate the firmware file which you just downloaded from the GIGABYTE website, and then click **Upgrade**.

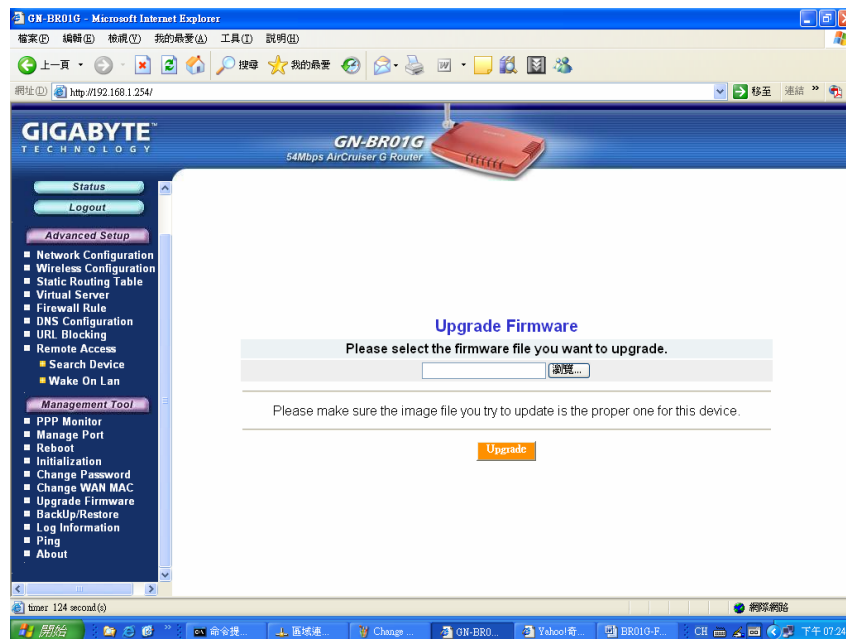


Figure 7-7 – Upgrade Firmware

## The Backup / Restore Screen

The **Backup / Restore** screen allows you to save the current configuration settings of the AirCruiser G Wireless Router as a temp file onto your computer. To revert the Router back to a previously saved configuration settings, click the **Browse** to locate the saved configuration file. Then, click the **Restore** button.

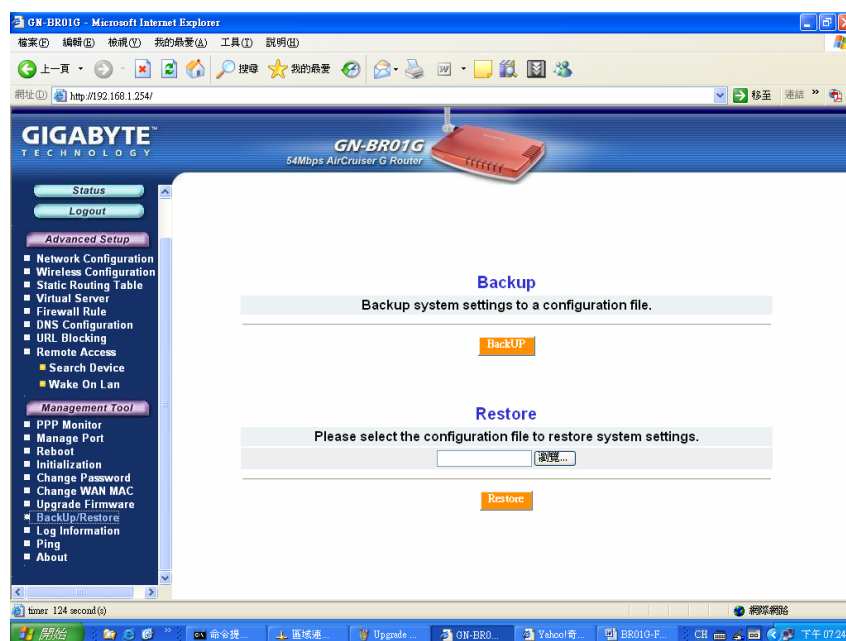


Figure 7-8 – Backup/Restore configurations

## The Log Information Screen

The AirCruiser G Wireless Router keeps logs of all port activity and events which cause a state change.

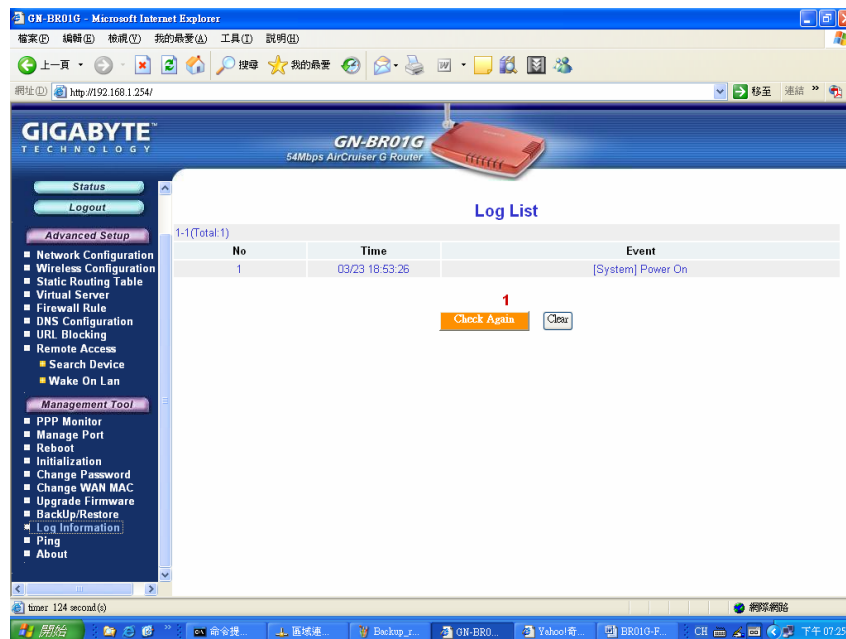


Figure 7-9 – Event Log Screen

## The Ping Screen

'Pinging' involves sending a packet of data to a site and recording how long it takes for the site to acknowledge receipt. This is useful if you think that a web site might be slow or unavailable. Type the IP Address and click the Ping button to start.

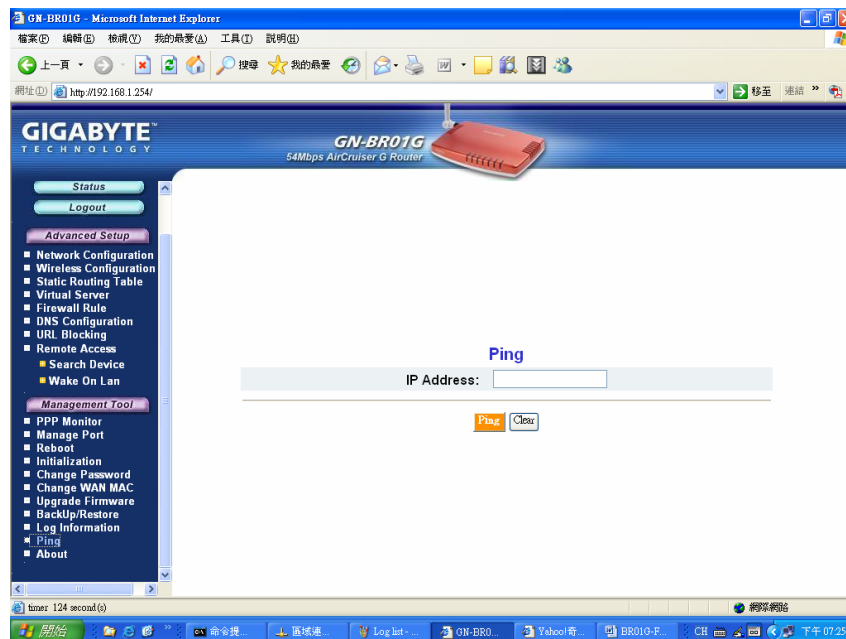


Figure 7-10 – Ping screen