



Bluetooth Media Adapter

GN-BT06T

User's Guide

February 2006 - Revision 1.0

Federal Communication Commission Interference

Statement

This equipment has been tested and found to comply with the limits for a Class B digital device, pursuant to Part 15 of the FCC Rules. These limits are designed to provide reasonable protection against harmful interference in a residential installation. This equipment generates, uses and can radiate radio frequency energy and, if not installed and used in accordance with the instructions, may cause harmful interference to radio communications. However, there is no guarantee that interference will not occur in a particular installation. If this equipment does cause harmful interference to radio or television reception, which can be determined by turning the equipment off and on, the user is encouraged to try to correct the interference by one of the following measures:

- Reorient or relocate the receiving antenna.
- Increase the separation between the equipment and receiver.
- Connect the equipment into an outlet on a circuit different from that to which the receiver is connected.
- Consult the dealer or an experienced radio/TV technician for help.

This device complies with Part 15 of the FCC Rules. Operation is subject to the following two conditions: (1) This device may not cause harmful interference, and (2) this device must accept any interference received, including interference that may cause undesired operation.

FCC Caution: Any changes or modifications not expressly approved by the party responsible for compliance could void the user's authority to operate this equipment.

IMPORTANT NOTE:

FCC Radiation Exposure Statement:

This equipment complies with FCC radiation exposure limits set forth for an uncontrolled environment. End users must follow the specific operating instructions for satisfying RF exposure compliance.

This equipment should be installed and operated
with minimum distance 20cm between the radiator & your body.

This transmitter must not be co-located or operating in conjunction with any other
antenna or transmitter.

Contents

Chapter 1 Getting To Know Your BT06T	1
Overview	1
Features.....	1
Package Contents.....	1
Rear Panel.....	2
Front Panel	3
Side Panel.....	3
LEDs	4
Chapter 2 Connecting the BT06T.....	5
Transmitter Mode	5
Receiver Mode.....	6
Chapter 3 The GN-BT06T Utility.....	13
Installing the Utility	13
Changing the PIN Code	16
Appendix A Specifications	18
Appendix B Warranty	19

Chapter 1

Getting To Know Your BT06T

Overview

The GIGABYTE GN-BT06T Bluetooth Media Adapter is truly a unique Bluetooth product, the only one of its kind. The GN-BT06T is the solution to eliminating running cables from your computer to your home stereo system, wirelessly streaming audio source of any format to your home stereo system. But there's more to the GN-BT06T mode switching turns it into a Bluetooth transmitter, wirelessly streams audio source from the audio jack-in to your Bluetooth headset. Pairing button enables the GN-BT06T to easily connect to Bluetooth devices and also be connected to.

Features

- Extreme Solution for Bluetooth Stereo Audio
- Support:
 - ◆ Advanced Audio Distribution Profile, v1.0
 - ◆ Audio/Video Remote Control Profile, v1.0
- Easy Operation
- Elaborate Amplifier and Speakers
- Support change PIN/Passkey by USB
- No driver

Package Contents

- GN-BT06T Bluetooth Media Adapter X 1
- Power adapter X 1
- USB Cable X 1
- RCA Cable X 1
- Line In/Out Cable X 1
- User Guide on CD-ROM X 1

If there are any missing or damaged parts, please contact your local distributor or dealer immediately.



Using a power supply with a different voltage rating than the one included with the BT06T may cause damage and void the warranty for this product.

Rear Panel

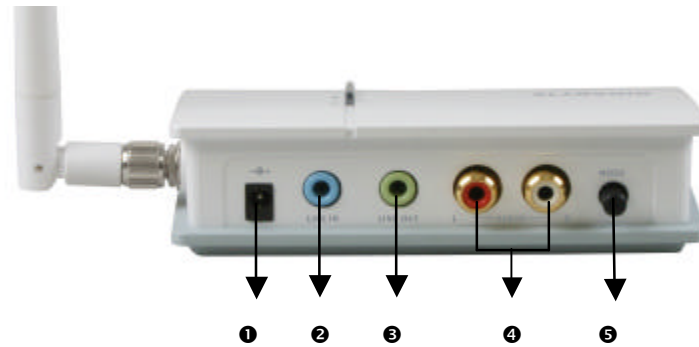


Figure 1: Adapter's Rear Panel

- | | |
|---------------------------|---|
| ❶ Power Input | The Power port is where you will connect the power adapter. |
| ❷ Line Input | Audio input from a computer or mp3 player. |
| ❸ Line Output | Audio output to speakers or headphone. |
| ❹ RCA Audio Output | Audio output to any speaker with RCA connector. |
| ❺ Mode Switch | Set the device in Transmitter mode or Receiver mode. |

Front Panel

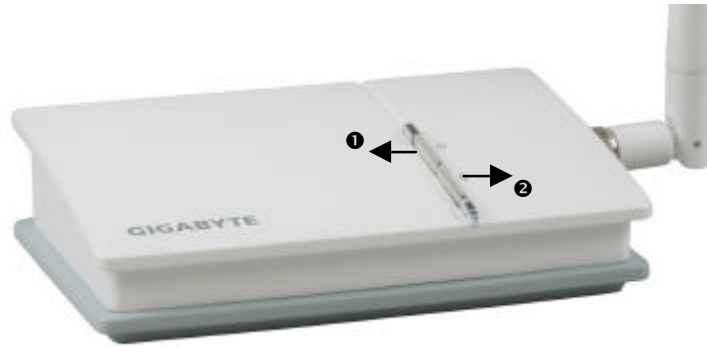


Figure 2: Adapter's Front Panel

- ❶ **Power Switch** Power On/OFF the GN-BT06T.
- ❷ **Pairing Button** Pairing with Bluetooth enabled device.

Side Panel

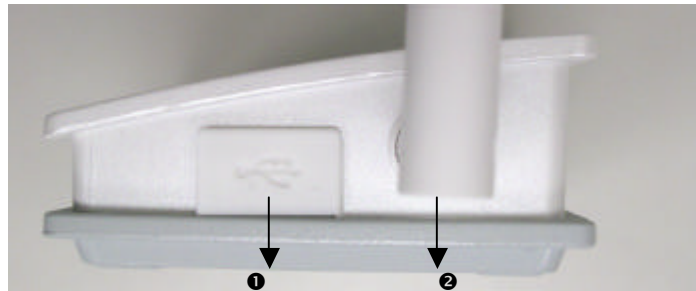


Figure 3: Adapter's Side Panel

- ❶ **USB Port** You can change the pin key for GN-BT06T through the USB port. The USB port can also work as power in port when connecting to PC by using USB cable.
- ❷ **Antenna** External Antenna 2dBi

GN-BT06T Bluetooth Media Adapter

LEDs



Figure 4: LED Layout

The table below describes the LED indicators on the front panel of the GN-BT06T.

LED	STATUS	DESCRIPTION
Power	Green	In Transmitter Mode.
	Orange	In Receiver Mode.
	Off	Power off.
Status	Flashing Blue LED	In streaming Mode
	Blue & Green are Flashing by turns	In pairing mode.

Chapter 2 Connecting the BT06T

The GIGABYTE GN-BT06T Bluetooth media adapter supports two operation modes: Transmitter Mode and Receiver Mode. Let you can enjoy the music from a Bluetooth Headphone or speaker and other AV devices.

Transmitter Mode

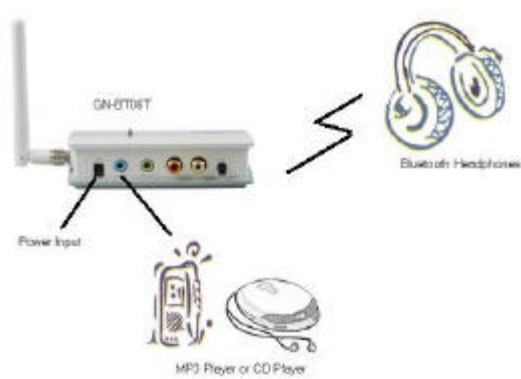


Figure 5: Transmitter Mode Diagram

- Step 1 Plug the power adapter cord into the adapter's power jack and then plug the power adapter into a power outlet.
- Step 2 Connect the mp3 player or other media devices to the Line Input port of the GN-BT06T.
- Step 3 Switch on the power. And set the GN-BT06T in Transmitter mode. Now, the power led will be green light.
- Step 4 Turn on your Bluetooth Headphones and make sure it in pairing mode. Then, press the pairing button of the GN-BT06T for more than one second. The GN-BT06T starts pairing with the Bluetooth Headphones.
- Step 5 The status LED will glitter in both blue and green colors and then glitter in blue color only. Now, you can enjoy the music from the headphones is directed through the Bluetooth Wireless Stereo Audio system.

GN-BT06T Bluetooth Media Adapter

Receiver Mode

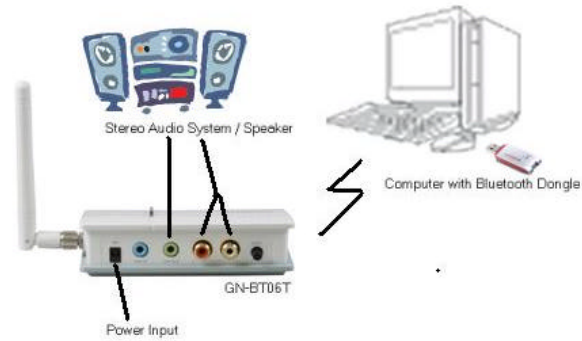


Figure 6: Receiver Mode Diagram

- Step 1 Plug the power adapter cord into the adapter's power jack and then plug the power adapter into a power outlet.
- Step 2 Connect the Line Output from the GN-BT06T to the speaker or other Stereo Audio system.
- Step 3 Switch on the power. And set the GN-BT06T in Receiver mode. Now, the power led will be orange light.
- Step 4 Connect the Bluetooth USB Dongle to your PC.
- Step 5 Then, please open the Bluetooth Configuration screen. (Please refer to your Bluetooth USB Dongle user's guide for installing instruction. Below Configuration Screen comes from IVT, you may have different Bluetooth Dongle Configuration Screen in your Bluetooth Dongle Package)

GN-BT06T Bluetooth Media Adapter

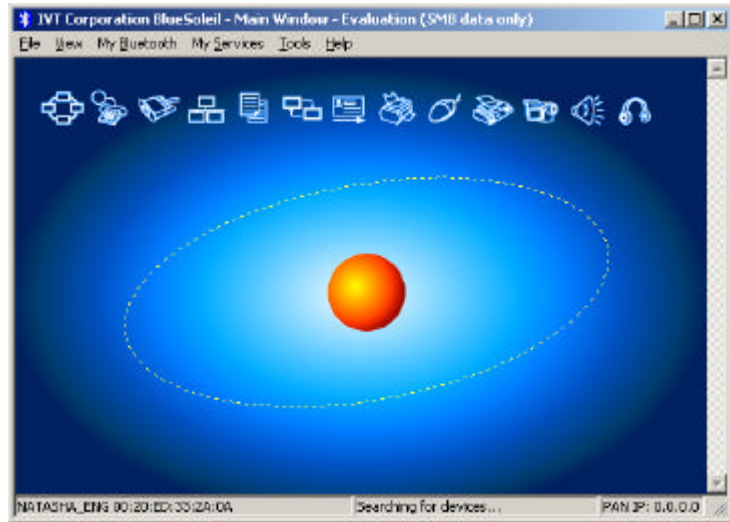


Figure 7: Bluetooth Configuration – Main Window

Step 6 Press the pairing button of the GN-BT06T for more than one second.

Step 7 Searching the GN-BT06T by Bluetooth USB Dongle.

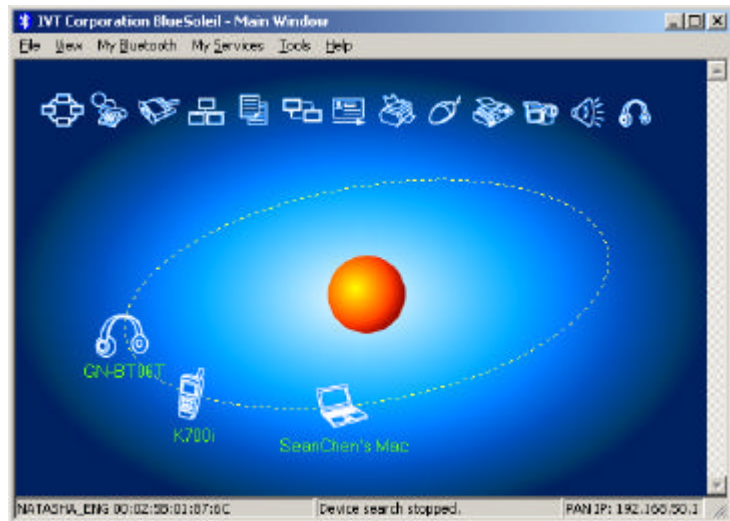


Figure 8: Bluetooth Configuration – Searching

GN-BT06T Bluetooth Media Adapter

Step 8 Right-click on the GN-BT06T icon and choose the **Pair Device** item.

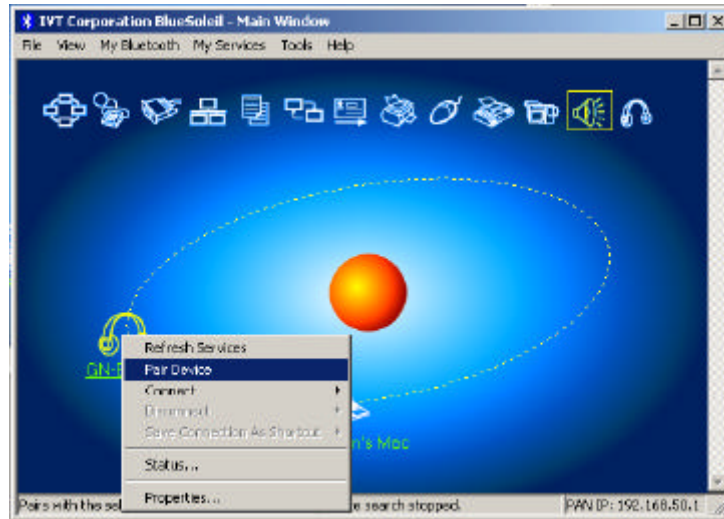


Figure 9: Bluetooth Configuration – Pair Device

Step 9 Enter the GN-BT06T Passkey. (The default is 0000.)

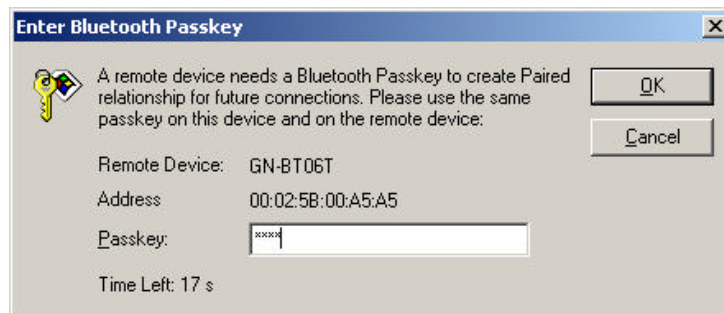


Figure 10: Bluetooth Configuration – Enter Bluetooth Passkey

GN-BT06T Bluetooth Media Adapter

- Step 10 The connection between GN-BT06T and Bluetooth USB Dongle is ready. Right-click on the GN-BT06T icon and choose the **Refresh Services** item. The Bluetooth AV services icon will be enabled. Please click the Bluetooth AV services icon.

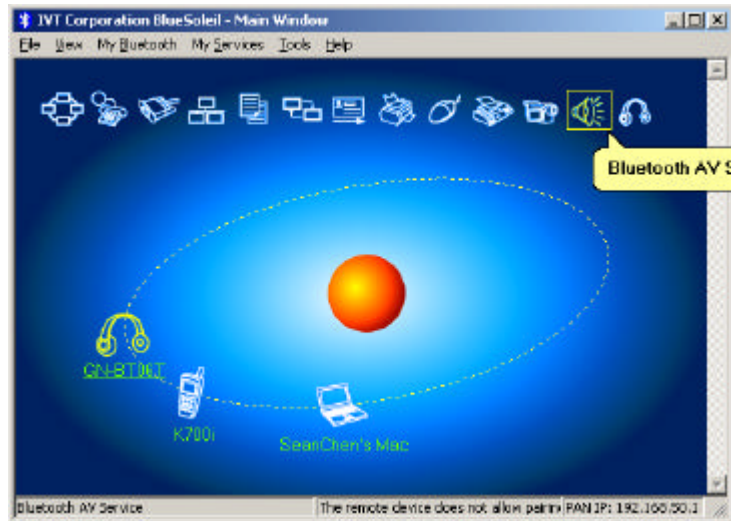
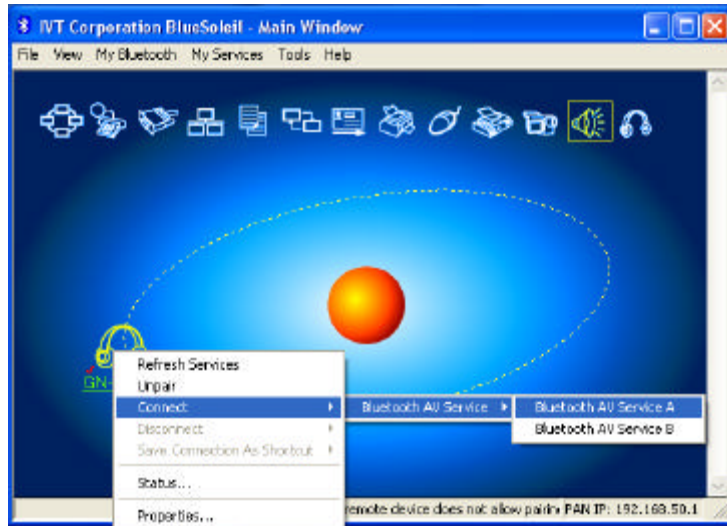


Figure 11: Bluetooth Configuration – Connection

- Step 11 Right-click on the GN-BT06T icon and choose the **Connect Bluetooth AV Service** item.



GN-BT06T Bluetooth Media Adapter

Figure 12: Bluetooth Configuration – Connection

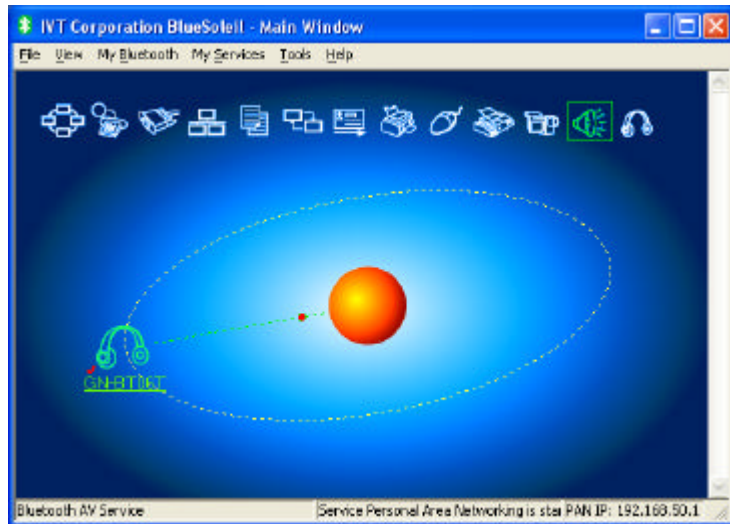


Figure 13: Bluetooth Configuration – Connection

Now, you can enjoy the music from the Speaker or other AV device is directed through the Bluetooth Wireless Stereo Audio system.

- Step 12 You can create a shortcut for future connection. Right-click on the GN-BT06T icon and choose the **Save Connection As Shortcut\ Bluetooth AV Service** item.

GN-BT06T Bluetooth Media Adapter

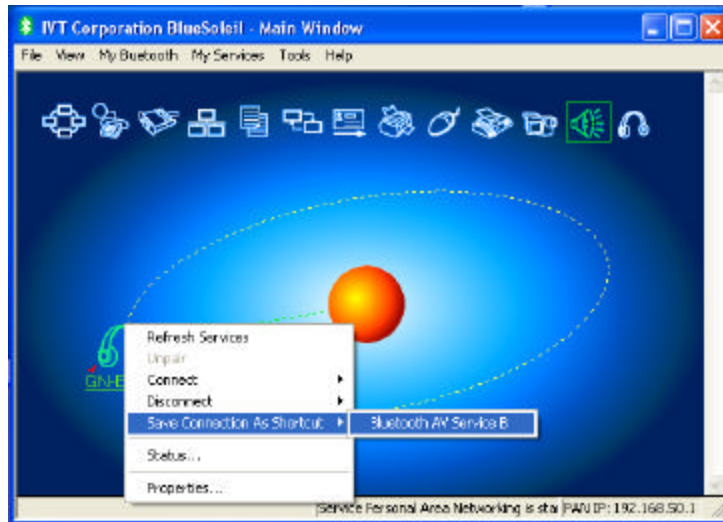


Figure 14: Bluetooth Configuration – Create a shortcut

Then, there will appear a connection shortcut of the GN-BT06T(AV headphone) on your desk-top.



Note:

For Windows operating system, if there is still no sounds output after a successful pairing, please go to "**Control Panel**" and click "**Sounds and Multimedia Properties**". Choose "**Audio**" tab, and confirm the Sound playback value is "Bluetooth AV/HS Audio".

GN-BT06T Bluetooth Media Adapter

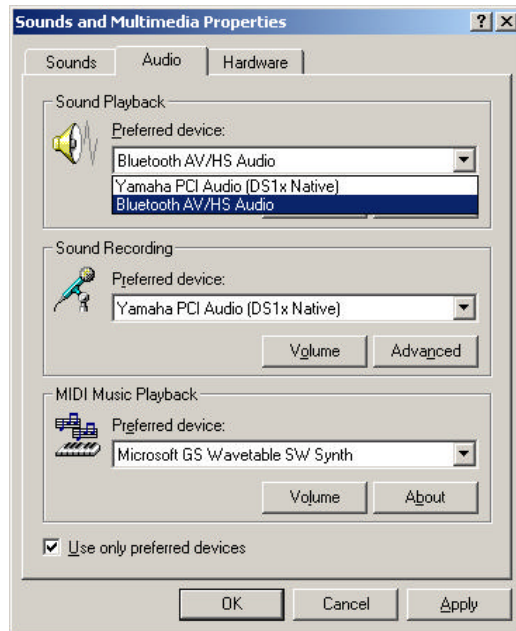


Figure 15: Sounds and Multimedia Properties

Chapter 3 The GN-BT06T Utility

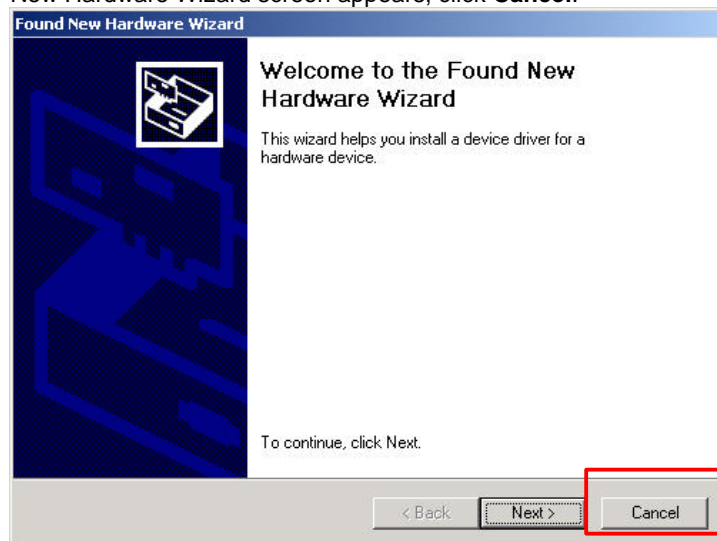
The GN-BT06T utility lets you easy to install the driver and change the PIN code for the BT06T.

Notice: PLEASE UNPLUG THE BLUETOOTH DONGLE BEFORE INSTALL/USING THIS UTILITY.

Installing the Utility

Please do the following steps to install the GN-BT06T utility.

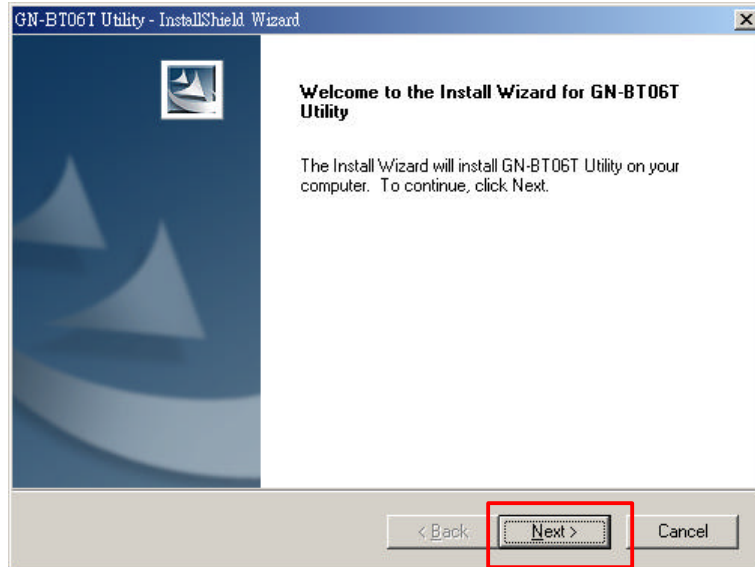
- Step1.** Connect the one end of USB cable to the GN-BT06T and the other end into your PC. And then, power on the GN-BT06T. If the Found New Hardware Wizard screen appears, click **Cancel**.



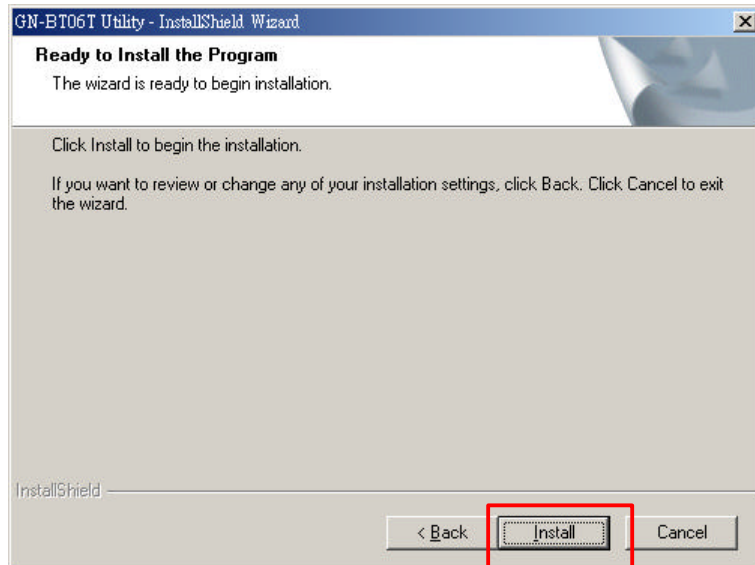
- Step2.** Insert the installation CD and click Install **the GN-BT06T Utility** on the CD auto run screen.

GN-BT06T Bluetooth Media Adapter

Step3. Click **Next**.

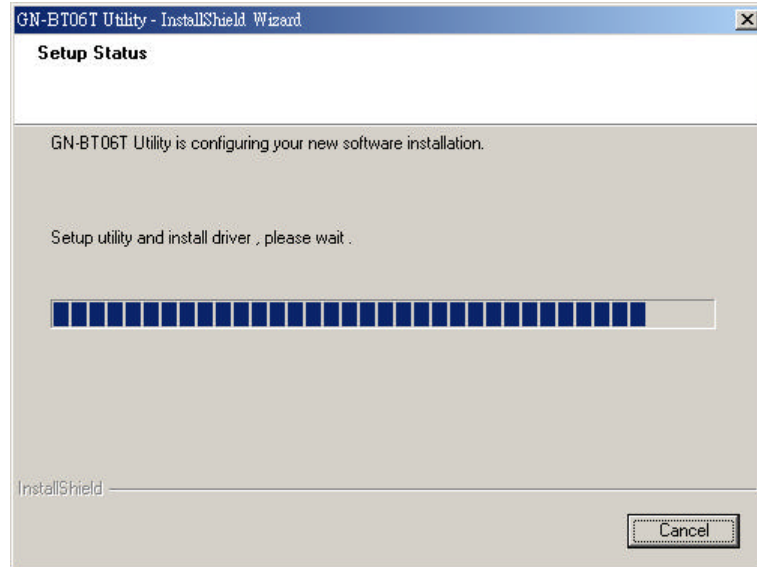


Step4. Click **Install**.

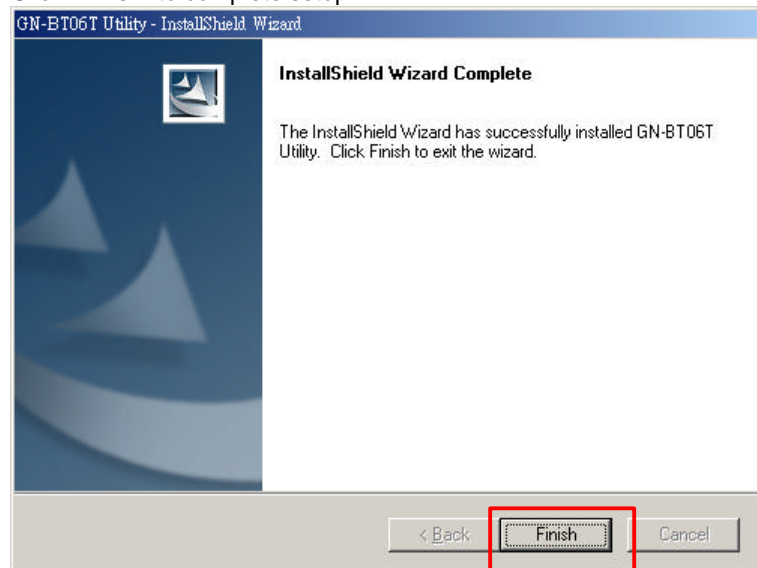


GN-BT06T Bluetooth Media Adapter

Step5. Please wait a while!



Step6. Click "Finish" to complete setup.



GN-BT06T Bluetooth Media Adapter

Step7. The following message will show the default active PIN code for the GN-BT06T. Click **OK**, you will enter the **BT06T PIN Code Change Utility** screen.



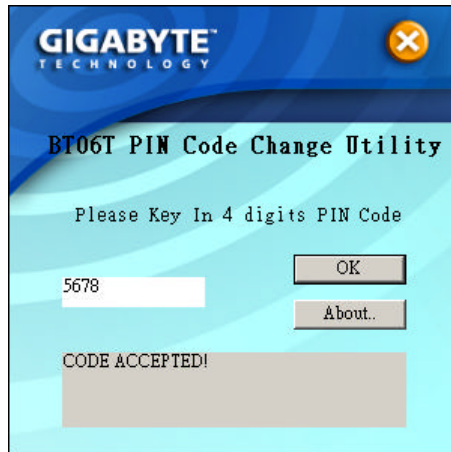
Changing the PIN Code

If the pairing operation cannot build the connection between GN-BT06T and other Bluetooth device, please check the PIN code of the bluetooth device. Two devices must be in the same PIN code. You can change the BT06T PIN code through the GN-BT06T utility.

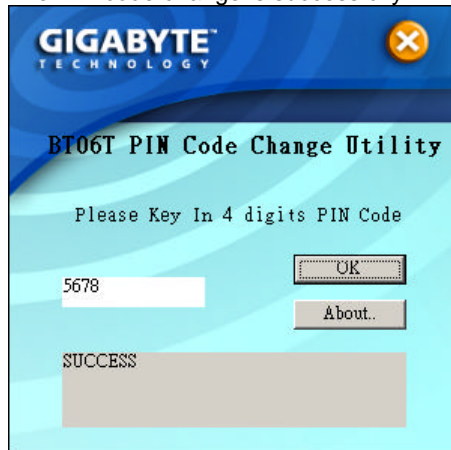
GN-BT06T Bluetooth Media Adapter

Please key in 4 digits in the field and then click **OK**.

Note: "OK" button will remain disabled if input digit is insufficient.



The PIN code change is successfully.



Appendix A Specifications

System	
CPU & Wireless	BlueCore3 Multimedia External, 1MB Flash
Standards	Bluetooth V1.2
Operating Range	Wireless-Open space : 100m ; Indoor : 30-100m
Power Adapter	5V,1A
Standard	
Interface	USB1.1, compliant with USB 2.0
Data rate	723.2Kbps(MAX)
Operating Range	Frequency : 2.402~2.480GHz, channel number : 79, TX Output : 0dBm~+14.5dBm,
Coverage	100 meters
Supported Profile	AVRCP, A2DP
Software Support	
Supported OS	Windows 2000/XP
Regulatory and Environmental Compliance	
EMC certification	FCC
	CE
Temperature Range	Operating: 0 to 50 °C, Storage: -20 to 65 °C
Humidity	5% ~ 90% Non-condensing
Mechanical	
Packaging	Generic, Gigabyte, private labeling optional
LED indicator	Power LED, Pairing LED, Status LED (Blue)
Gross Weight	128 g
Dimension	110 x 68 x 30 mm

Appendix B Warranty

Limited Warranty Statement (1-Year Warranty)

Thank you for purchasing the GIGABYTE Product. This limited warranty statement will provide you one year warranty starting from the purchase date. Of which if any defect is occurred due to accidents or any man-made factors, or any unauthorized torn-off or damage to GIGABYTE's sticker on the product, GIGABYTE Technology will not provide after-sale services, such as:

- Products are damaged due to any violation of instructions on user manual.
- Hardware is damaged due to inappropriate assembling.
- Products are damaged due to the use of illegal accessory.
- Products are damaged due to parts disassembling without authorization.
- Products are damaged due to exceeding environment limits.
- Products are damaged due to unexpected external force.
- Products are damaged due to nature disasters.
- Products are copies or illegally smuggled goods.

PLEASE RECORD THE FOLLOWING INFORMATION REGARDING YOUR WARRANTY

Name of Customer:	
Phone No:	
Address:	
Email:	
Model:	
Serial:	
Date of Purchase:	
Place of Purchase:	
From Whom:	
Distributor:	

Customer Service

<p><u>GIGA-BYTE TECHNOLOGY CO., LTD.</u> No.6, Bau Chiang Road, Hsin-Tien, Taipei Hsien, Taiwan. Tel: 886-2-89124888 Fax:886-2-89124007 http://www.GIGABYTE.com.tw</p>
--