



GN-WIKG

IEEE 802.11b/g Wireless LAN Mini-PCI Card

User's Manual

<http://www.gigabyte.com.tw>

Rev. 1.0 First Edition

Federal Communication Commission Interference Statement

This equipment has been tested and found to comply with the limits for a Class B digital device, pursuant to Part 15 of the FCC Rules. These limits are designed to provide reasonable protection against harmful interference in a residential installation. This equipment generates, uses and can radiate radio frequency energy and, if not installed and used in accordance with the instructions, may cause harmful interference to radio communications. However, there is no guarantee that interference will not occur in a particular installation. If this equipment does cause harmful interference to radio or television reception, which can be determined by turning the equipment off and on, the user is encouraged to try to correct the interference by one of the following measures:

- Reorient or relocate the receiving antenna.
- Increase the separation between the equipment and receiver.
- Connect the equipment into an outlet on a circuit different from that to which the receiver is connected.
- Consult the dealer or an experienced radio/TV technician for help.

This device complies with Part 15 of the FCC Rules. Operation is subject to the following two conditions: (1) This device may not cause harmful interference, and (2) this device must accept any interference received, including interference that may cause undesired operation.

FCC Caution: Any changes or modifications not expressly approved by the party responsible for compliance could void the user's authority to operate this equipment.

IMPORTANT NOTE:

FCC Radiation Exposure Statement:

This equipment complies with FCC radiation exposure limits set forth for an uncontrolled environment. This equipment should be installed and operated with minimum distance 20cm between the radiator & your body.

This transmitter must not be co-located or operating in conjunction with any other antenna or transmitter.

"GIGABYTE declare that GN-WIKG (Wireless mini-PCI Module) is limited in CH1~CH11 by specified □ firmware controlled in USA."

This device is intended only for OEM integrators under the following conditions:

1) The antenna must be installed such that 20 cm is maintained between the antenna and users, and

2) The transmitter module may not be co-located with any other transmitter or antenna.

As long as 2 conditions above are met, further transmitter test will not be required. However, the OEM integrator is still responsible for testing their end-product for any additional compliance requirements required with this module installed (for example, digital device emissions, PC peripheral requirements, etc.).

IMPORTANT NOTE: In the event that these conditions can not be met (for example certain laptop configurations or co-location with another transmitter), then the FCC authorization is no longer considered valid and the FCC ID can not be used on the final product. In these circumstances, the OEM integrator will be responsible for re-evaluating the end product (including the transmitter) and obtaining a separate FCC authorization.

End Product Labeling

This transmitter module is authorized only for use in device where the antenna may be installed such that 20 cm may be maintained between the antenna and users (for example :AP/Router/Motherboard). The final end product must be labeled in a visible area with the following: **JCK-GN-WIKG**

Manual Information That Must be Included

The OEM integrator has to be aware not to provide information to the end user regarding how to install or remove this RF module in the users manual of the end product which integrate this module.

The users manual for OEM integrators must include the following information in a prominent location
“ IMPORTANT NOTE: To comply with FCC RF exposure compliance requirements, the antenna used for this transmitter must be installed to provide a separation distance of at least 20 cm from all persons and must not be co-located or operating in conjunction with any other antenna or transmitter.

Contents

| | |
|--|-----------|
| CHAPTER 1. PRODUCT OVERVIEW | 1 |
| 1-1. INTRODUCTION | 1 |
| 1-2. FEATURES | 1 |
| 1-3. PHYSICAL DIMENSIONS/PACKAGING | 1 |
| 1-4. SYSTEM REQUIREMENTS | 2 |
| CHAPTER 2. INSTALLING THE WLAN CARD | 3 |
| 2-1. INSTALLING THE WIRELESS MINI-PCI ADAPTER | 3 |
| 2-2. DRIVER & UTILITY INSTALLATION - WINDOWS® 98SE | 4 |
| 2-3. DRIVER & UTILITY INSTALLATION - WINDOWS® ME | 8 |
| 2-4. DRIVER & UTILITY INSTALLATION - WINDOWS® 2000 | 12 |
| 2-5. DRIVER & UTILITY INSTALLATION - WINDOWS® XP | 17 |
| CHAPTER 3 USING THE GIGABYTE WLAN CONFIGURATION UTILITY | 21 |
| 3-1. THE PROFILE TAB | 21 |
| 3-2. THE LINK STATUS TAB | 28 |
| 3-3. THE SITE SURVEY TAB | 29 |
| 3-4. "STATISTICS" SETTING | 30 |
| 3-5. THE ADVANCED TAB | 31 |
| 3-6. THE ABOUT TAB | 32 |
| CHAPTER 4 TROUBLESHOOTING | 33 |
| CANNOT ENABLE 802.1X, WPA OR WPA-PSK | 33 |
| CANNOT ESTABLISH CONNECTION TO A WIRELESS NETWORK | 33 |
| CAN CONNECT TO AN ACCESS POINT, BUT CANNOT ACCESS THE INTERNET | 33 |
| POOR LINK QUALITY AND WEAK SIGNAL STRENGTH | 33 |
| CHAPTER 5 HARDWARE SPECIFICATIONS | 34 |

Chapter 1. Product Overview

1-1. Introduction

This 802.11b/g Wireless Local Area Network (WLAN) card is composed of the MAC, Baseband, and radio components, Mini-PCI interface, and two built-in antennas. It operates in 2.4GHz frequency bands, providing fast (up to 54Mbps) and secure (support AES, 802.1x & WEP and WAP) connections to 802.11b and 802.11g networks from a single card.

1-2. Features

- Conforms to 802.11b/802.11g specification.
- Transmits data rate up to the maximum speed of 54Mbps.
- Dynamically scales the data rate.
- Automatic power management to reduce battery consumption.
- Built-in diversity antenna.
- Seamless roaming between 802.11b and 802.11g networks.
- Supports AES (Advance Encryption System), enterprise-class 802.1x security and multiple levels of WEP encryption (64-bit /128-bit), and WPA (Wi-Fi Protected Access)..
- Driver supports Windows 98SE/Me/2000/XP.

1-3. Physical Dimensions/Packaging

Dimensions: 59mm* 44mm* 4mm

Please check that the package contents include:

- GN-WIKG Wireless Mini-PCI Adapter
- GN-WIKG Installation CD with Windows Drivers

In case of damaged or missing package contents, please contact your local distributor or authorized reseller immediately. Should you require returning the product, please include all original packing materials or the warranty will be voided.

1-4. System Requirements

- IBM PC/AT compatible computer
- Windows® 98SE/Me/2000/XP

Chapter 2. Installing the WLAN Card

This chapter will assist you in completing the hardware and software installation of the GN-WIKG Wireless Mini-PCI Adapter successfully. Please refer to the driver & utility installation section that matches your operating system.

2-1. Installing the Wireless Mini-PCI Adapter

Step 1: Turn off your PC and disconnect the power cord.

Step 2: Remove the PC cover.

Step 3: Locate an available Mini-PCI slot and remove its back plate from the PC chassis.

Step 4: Insert the GN-WIKG Mini-PCI Adapter into the slot and fasten it to the chassis using the screws in step 3.

Step 5: Power on your desktop PC.

2-2. Driver & Utility Installation - Windows® 98SE

Step 1: When the **Add New Hardware Wizard** screen appears, click **Cancel** to exit.

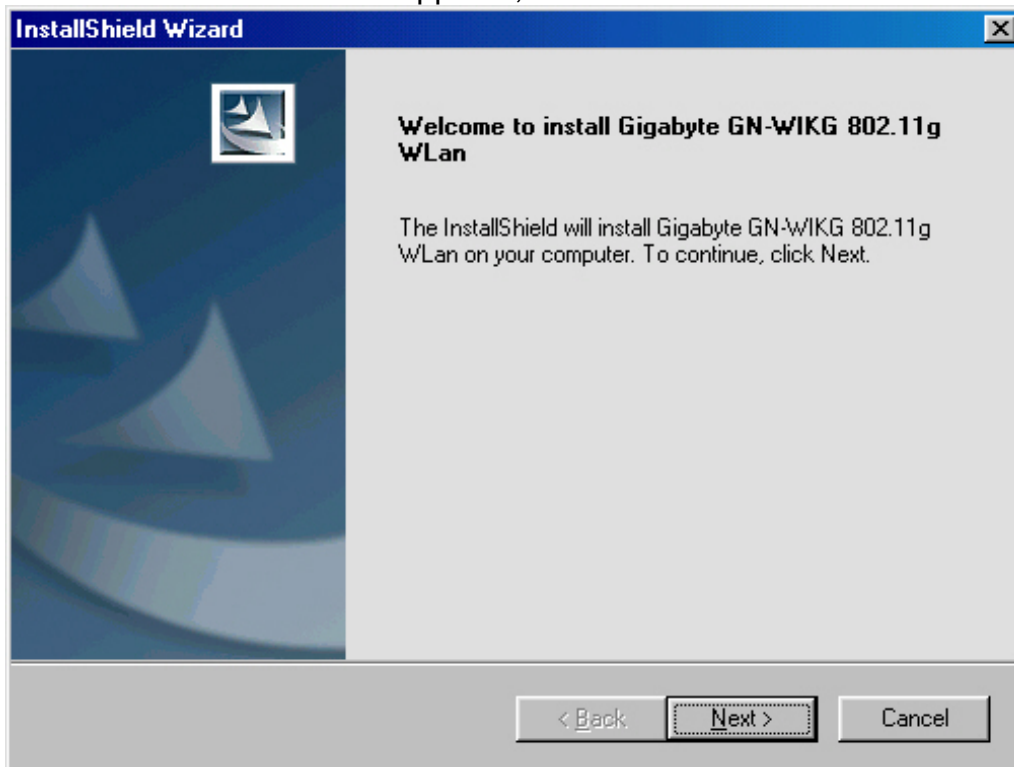


Step 2: Insert the GN-WIKG Installation CD into the CD-ROM drive. The GIGABYTE GN-WIKG Wireless Mini-PCI Adapter setup screen appears.

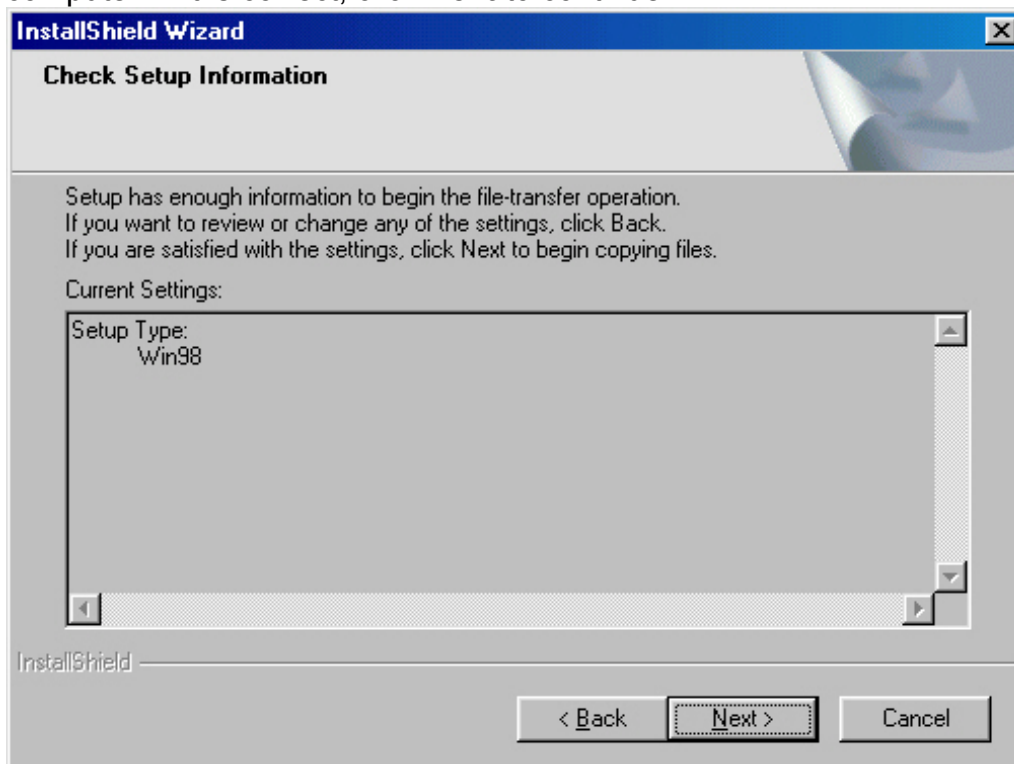
Step 3: Drag your mouse over **Install Wireless LAN Utility** and click on it to start the utility installation program.



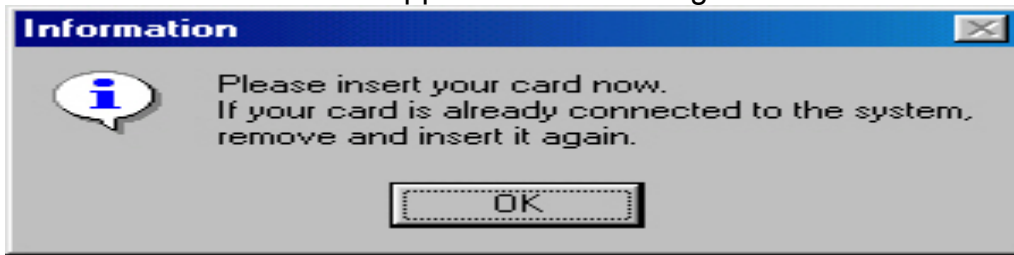
Step 4: When the Welcome screen appears, click **Next**.



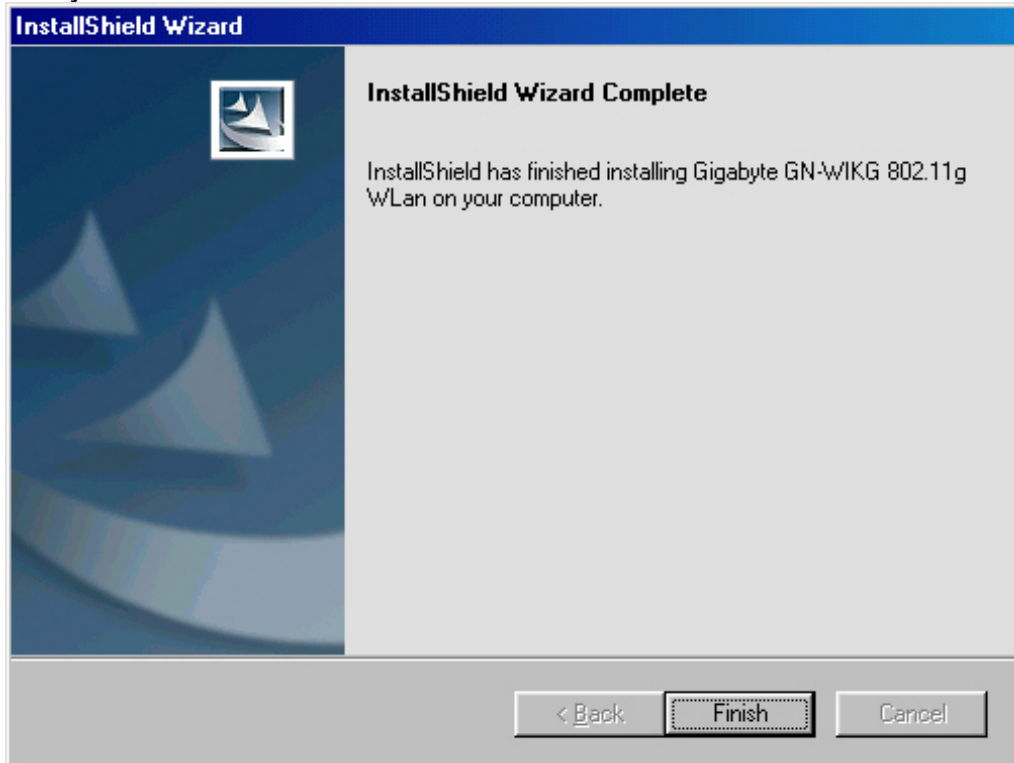
Step 5: The Check Setup Information screen displays the Operating System of your computer. If it is correct, click **Next** to continue.



Step 6: An information box screen appears. Click **OK** to go to the next screen.



Step 7: After the software utility installation is complete, click **Finish**. You are now ready to install 802.1x authentication software.



Step 8: Drag your mouse over **Browse the CD** and click on it.

