

Copyright © 2009

All Right Reserved - Printed in China

M1022 Booktop User's Manual

Original Issue: 2009/4/13

This manual guides you in setting up and using your new Booktop PC. Information in the manual has been carefully checked for accuracy and is subject to change without notice.

No part of this manual may be reproduced, stored in a retrieval system, or transmitted, in any form or by any means, electronic, mechanical, photocopy, recording, or otherwise, without prior written consent.

Trademarks

Product names used herein are for identification purposes only and may be the trademarks of their respective companies.

Microsoft®, MS-DOS, Windows®, and Windows® Sound System are trademarks of Microsoft Corporation.

Intel®, Atom™ is registered trademarks of Intel Corporation.

Sound Blaster, Sound Blaster Pro are trademarks of Creative Technology.

All other brands or product names mentioned in this manual are trademarks or registered trademarks of their respective companies.

Safety Instructions

Use the following safety guidelines to help protect yourself and your Booktop.

When Using Your M1022 Booktop Computer



CAUTION: Do not operate your portable computer for an extended period of time with the base resting directly on your body. With extended operation, heat can build up in the base. Allowing sustained contact with the skin can cause discomfort or a burn.

- Do not attempt to service the Booktop yourself. Always follow installation instructions closely.
- Do not carry a battery in your pocket, purse, or other container where metal objects (such as car keys) could short-circuit the battery terminals. The resulting excessive current flow can generate extremely high temperature and may cause burns to your skin.
- Be sure that nothing rests on your AC adapter's power cable and that the cable is not located where it can be tripped over or stepped on.
- While you are using the computer or charging the battery, place the AC adapter in a ventilated area, like on a desktop or on the floor. Do not cover the AC adapter with papers or other items that may prevent ventilation. Also, do not use the AC adapter while it is inside a carrying case.
- Do not insert objects into the air vent of your Booktop computer. Doing so can cause short-circuiting and may result in fire or electrical shock.
- Use only the AC adapter and batteries that are supplied by your Booktop manufacturer. Using other types of battery or AC adapter may heighten the risk of fire or explosion.
- Incorrectly placed batteries may result in an explosion.
- Replace only with the same or compatible battery recommended by the manufacturer.
- Please discard used batteries according to the manufacturer's instructions.
- Before you connect your Booktop to a power source, ensure that the voltage rating of the AC adapter matches that of the available power source.
 - 115 V/60 Hz in most of North and South America and some Far Eastern countries such as South Korea.
 - 100 V/50 Hz in eastern Japan and 100 V/60Hz in western Japan.
 - 230 V/50 Hz in most of Europe, the Middle East, and the Far East.
- If you use an extension cord with your AC adapter, ensure that the total ampere rating of all devices plugged into the extension cord does not exceed its total capacity.
- When removing battery from your Booktop, first turn off the system, disconnect the AC adapter from the electrical outlet, and then remove the battery.
- To avoid risk of an electrical shock, do not connect or disconnect any cables, or perform maintenance or reconfiguration of this product during a thunderstorm.
- Do not throw batteries into fire, doing so may cause explosion. Check with local authorities first for battery disposal instructions.

- When setting up your Booktop for work, place it on a level surface.⁵
- When traveling, do not check your Booktop as baggage. You can put your Booktop through an X-ray security machine, but never put your Booktop through a metal detector. If you have your Booktop checked by hand, be sure to have a charged battery ready in case you are asked to turn on your Booktop.
- When traveling with the hard drive removed from your Booktop, wrap the drive in an insulated material, such as cloth or paper. If you have the drive checked by hand, you may be asked to install the drive into your Booktop. You can have the hard drive checked through an X-ray machine, but never put the drive through a metal detector.
- When traveling, do not place your Booktop in the overhead storage compartment where it could shift around. Do not drop your Booktop or subject it to other mechanical shocks.
- Protect your Booktop, battery, and hard drive from environmental hazards such as dirt, dust, food, liquids, extreme temperature, and direct exposure to sunlight.
- When you move your Booktop in environments where there is a substantial difference of temperature or humidity level, condensation may form on or within your Booktop. To avoid damaging your Booktop, please allow sufficient time for the moisture to evaporate before continue using.

NOTICE: When taking your Booktop from a colder to a warmer environment or vice versa, allow your Booktop enough time to adapt to the new environment before turning on power.

- When unplugging the power cord, please make sure that you pull on its connector or on its strain relief loop, and not on the power cord itself. As you pull out the connector, please ensure that it is pulled out evenly in order not to bend its connecting pins. Also, before you connect the power cord, make sure that both connectors are correctly oriented and aligned.
- Before you clean your Booktop, turn it off first, unplug it from its power source, and remove the battery.
- Handle interior components with care. When removing a component, please hold it by the edge and not on the connecting pins (such as the memory module).



When using your telephone equipments, safety instructions should always be followed in order to prevent fire, electrical shock or injuries, these instructions include:


- Do not use this product near water, for example, near a bathtub, washing basins, kitchen/laundry sinks, wet basements or swimming pools.
- Avoid using cordless phones during an electrical storm as lightening may cause electrical shocks.
- Do not use the telephone to report a gas leak within the leakage area.

The REN is useful to determine the quantity of devices you may connect to your telephone and still have those devices ring when your number is called. In most, but not all areas, the sum of the REN's of all devices should not exceed five (5.0). To be certain of the number of devices you may connect to your line, as determined by the REN, you should call your local telephone company to determine the maximum REN for your calling area.

If your MODEM causes harm to the telephone network, the local Telephone Company may discontinue your service temporarily. If possible, they will notify you in advance. However, if advanced notice isn't practical, you will be notified as soon as possible. You will be informed of your right to file a complaint with the FCC.

Your telephone company may make changes in its facilities, equipment, operations, or procedures that could affect the proper functioning for your equipment. If they do, you will be notified in advance to give you an opportunity to maintain an uninterrupted telephone service.

CE Notice (European Union)

This symbol  indicates this M1022 Booktop computer complies with the EMC Directive and the European Union's Low Voltage Directive. This symbol also indicates that M1022 meets the following technical standards:

- EN 55022 — "Limitations and Methods of Measurement for the Radio Interferences of Information Technology Equipment."
- EN 55024 — "Information technology equipment - Immunity characteristics - Limits and methods of measurement."
- EN 61000-3-2 — "Electromagnetic compatibility (EMC) - Chapter 3: Limits - Section 2: Limits on the harmonic current emissions (Equipment input current up to and including 16 A per phase)."
- EN 61000-3-3 — "Electromagnetic compatibility (EMC) - Chapter 3: Limits - Section 3: Limits on the voltage fluctuations and flicker in low-voltage power supply systems for equipment with rated current up to and including 16 A."
- EN 60950 — "Safety of Information Technology Equipment."



NOTE: EN 55022 emissions requirements provide for two classifications

- Class A governs commercial use
- Class B is governs residential use

For CB:

- ◆ Only use batteries designed for this computer. The wrong battery type may explode, leak or damage the computer
- ◆ Do not remove any batteries from the computer while it is powered on

- ◆Don not continue to use a battery that has been dropped, or that appears damaged (e.g. bent or twisted) in any way. Even if the computer continues to work with a damaged battery in place, it may cause circuit damage, which may possibly result in fire.
- ◆Recharge the batteries using the Booktop's system. Incorrect recharging may make the battery explode.
- ◆Do not try to repair a battery pack. Refer any battery pack repair or replacement to your service representative or qualified service personnel.
- ◆Keep children away from, and promptly dispose of a damaged battery. Always dispose of batteries carefully. Batteries may explode or leak if exposed to fire, or improperly handled or discarded.
- ◆Keep the battery away from metal appliances.
- ◆Affix tape to the battery contacts before disposing of the battery.
- ◆Do not touch the battery contacts with your hands or metal objects.

Battery Disposal & Caution

The product that you have purchased contains a rechargeable battery. The battery is recyclable. At the end of its useful life, under various state and local laws. It may be illegal to dispose of this battery into the municipal waste stream. Check with your local solid waste officials for details in your area for recycling options or proper disposal.

Danger of explosion if battery is incorrectly replaced. Replace only with the same or equivalent type recommended by the manufacturer. Discard used battery according to the manufacturer's instructions.

BSMI Notice (Taiwan Only)

Most Booktop computers are classified by the Bureau of Standards, Meteorology and Inspection (BSMI) as Class B information technology equipment (ITE).



The symbol above must be attached to the product indicating compliance with the BSMI standard.

Preface

Congratulations on your purchase of a Booktop computer! Your new Booktop features the most innovative features in portable computing technology. It combines state-of-the-art ergonomics with sophisticated architecture, providing you with a personal computer that is compact, powerful, and easy to use. Designed for a wide range of general, business, and personal productivity applications, this Booktop is an ideal choice for use in the office, at home, and on the road.

This Manual contains all the information you need to set up and use your Booktop computer. It describes all of its features in a thorough yet easy-to-read manner.

Content

Safety Instructions.....	I
Regulatory Notices.....	III
Preface.....	V
Chapter 1 Introducing Your Booktop	
1.1 Panoramic View.....	2
1.2 Left Side.....	3
1.3 Right Side.....	3
1.4 Cover Side.....	4
1.5 Bottom Side.....	4
1.6 Status Indicators.....	5
1.7 Turning Your Booktop On and Off.....	6
1.8 Keyboard Function.....	6
1.9 Using the Touchpad.....	8
1.10 Using the built-in camera.....	8
1.11 Using the Audio.....	8
1.12 Using the Wireless Lan (WLAN).....	9
1.13 Using the Battery Pack.....	9
1.14 Connection the AC Adapter.....	10
1.15 Installing M1022 Device Drivers.....	11
1.16 Operating Temperature.....	12
Chapter 2 Battery	
2.1 Battery Pack.....	14
2.2 Recharging The Battery Pack.....	14
2.3 Question And Answers.....	14
2.4 Battery Maintenance.....	15
2.5 Power Consumption.....	15
2.6 Reducing Power Consumption.....	15
2.7 Removing The Battery Pack.....	16
2.8 Connecting System To AC Adapter.....	16
Chapter 3 Dcoking	
3.1 Docking Instruction.....	18
3.2 System lid switch.....	18
3.2 Different Views Of The Docking Station.....	19
Chapter 4 The BIOS Setup Program	
4.1 Activate the BIOS Setup Utility.....	20
4.2 Main menu.....	22
4.3 Advanced Menu.....	23
4.4 Security Menu.....	24
4.5 Boot Menu.....	25
4.6 Exit Menu.....	25
Chapter 5 Introduction To Smart Manager	
5.1 Function Introduction.....	
Chapter 6 Troubleshooting / Q&A	
6.1 Troubleshooting.....	
6.2 Q/A.....	
Appendix I Specification.....	31
Appendix II Recovery Update Notices.....	33
Appendix III Service Centers.....	37

Chapter 1 Introducing Your M1022 Booktop

This chapter will show you how to operate your M1022 SERIES M1022 Booktop computer, including connecting the AC adaptor, turning the computer on/off, using touch-pad, keyboard, hot keys, battery, and so on. If you are new to computers and to the operating system, this chapter will guide you through some of the new exciting features.



1.1 Panoramic View

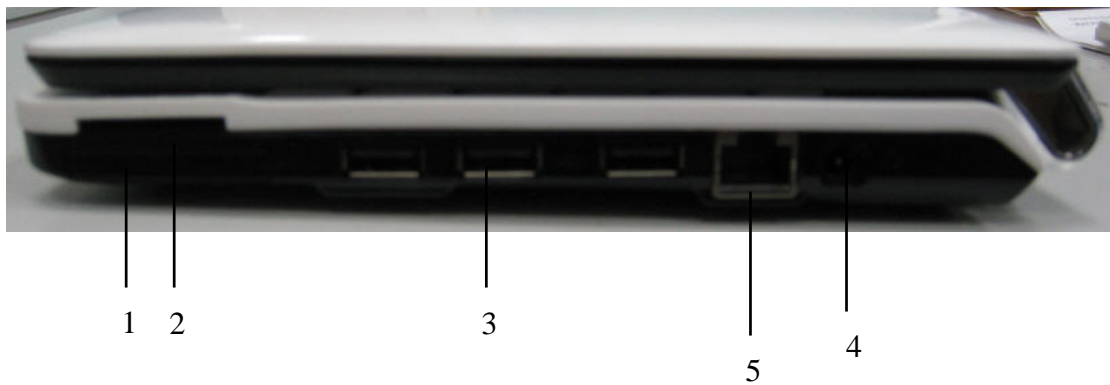
No.	Item	Function
1	Web camera	Built-in 1.3M camera
2	LCD	To display the content output from the system
3	Keyboard	To input characters and numbers
4	Six system LEDs	Six LED lights of system signal From left to right 3.5G Status Bluetooth signal

		WLAN signal
		HDD signal
		Battery signal
		Power on signal
5	Line out	To connect equipment to output sound.
6	Mic Jack	To connect MIC to input audio signal.
7	Speaker	Speaker
8	Touch Pad	Touch Pad



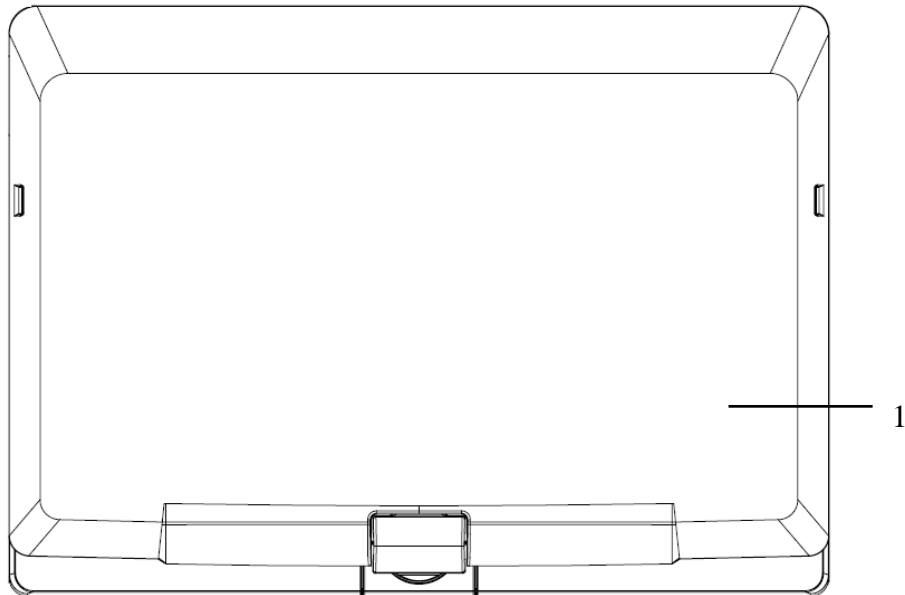
1.2 Left Side

No.	Item	Function
1	Kingston Lock	Security function
2	VGA	To connect VGA monitor.
3	Docking port	To connect Docking
4	Docking Hole	To fix the docking
5	MIC jack	To connect MIC to input audio signal.



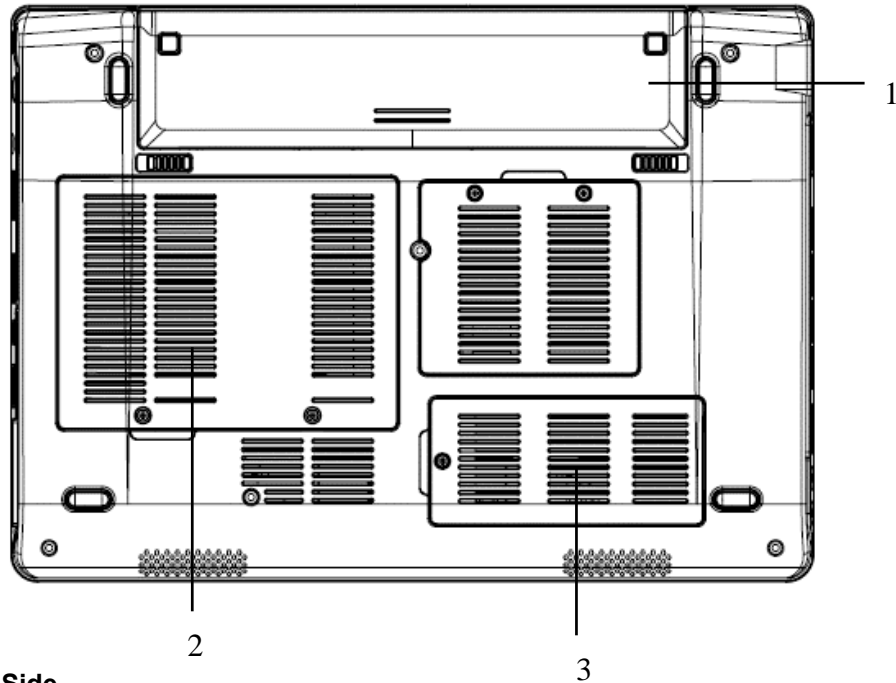
1.3 Right Side

No.	Item	Function
1	Express Card slot	To connect an Express Card.
2	4 in 1 Card Reader	Media Card Reader
3	USB port	To connect USB peripheral
4	DC-in hole	To connect AC adapter to power on M1022 Booktop.
5	LAN RJ45 Jack	To connect LAN



1.4 Cover Side

No.	Item	Function
1	Cover	To Protect the M1022 Booktop



1.5 Bottom Side

No.	Item	Function
1	Battery Pack	Installed in the battery compartment, to supply power to M1022 Booktop when AC power is disconnected.
2	HDD Door	To upgrade the SATA HDD
3	Memory Door	To upgrade the DDRII-Memory So-Dimm

1.6 Status Indicators

Icon	Item	Function
	Num Lock	When LED on, to turn on the numeric keypad overlay,.
	Cap Lock	When LED on, to set all the characters input are capital letters.
	3.5G	WWAN on/off status
	Bluetooth	Bluetooth on/off status
	WLAN Status	Wireless on/off status.
	HDD	M1022 Booktop is reading from, or writing to hard disk.
	Power status	Blue off \ System is turned off or in hibernation mode.
		Blue flashing \ System is in Standby mode.
		Blue on \ System is in operating.

Battery status	Blue off \ Recharging is finished or M1022 Booktop is not powered by AC adapter.
	Blue on \ Battery is in recharging.

1.7 Turning Your M1022 Booktop On and Off

Turning on the power

Open the M1022 Booktop lid, press and press the power button for one or two seconds. The power indicator will glow blue once the computer is powered on.

Turning off the power

If you are not going to use your M1022 Booktop computer for a while, it is best to turn off its power. Before turning off power, close all programs first and shut down the operating system. After turning off your M1022 Booktop computer, make it a habit to leave the LCD panel open for a while after it has been used for an extended period of time. This allows the interior of your M1022 Booktop computer to cool off. Closing the panel will force the heat up against the LCD screen, and doing so after a while may damage the screen. More importantly, never close the LCD panel for a long period of time when the computer is on or when the power saving function is disabled.

Suspend mode

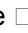
You can adjust default power management settings in the Power Option/Advanced dialog box. The Power Options dialog box provides several operating functions after your computer has been idle for a while.

1.8 Keyboard Functions

M1022 Booktop computer is equipped with a standard typewriter-layout keyboard and has extra features.

Icon	Description
Caps Lock	Press Caps Lock to set all the characters input are capital letters.
Num Lk	To turn on the numeric keypad overlay, press Num Lk .
Fn+ Scrl Lk	Press this key to scroll the screen under some programs.
	Press this key to activate Windows® START menu.
	Press this key to function as the right key of mouse.

Fn Combination Keys (Hot Keys)

Use  **Fn** key combined with other keys to activate, close or set special functions. These combinations are also called Hot Keys. To use the Hot Keys, press and hold down **<Fn>** together with the keys described below:

Icon	Description
<i>Fn+F1</i>	<p>Hibernation</p> <p>Press this key combination to make system enter hibernation mode.</p> <p>In this mode, the back light of the LCD panel would be turned off and a host of internal devices would enter into a stage of lower power consumption.</p>
<i>Fn+F2</i>	<p>Wireless LAN</p> <p>To activate Wireless LAN.</p>
<i>Fn+F3</i>	<p>Brightness decreasing</p> <p>Press this key combination to decrease the brightness of the LCD.</p>
<i>Fn+F4</i>	<p>Brightness increasing</p> <p>Press this key combination to increase the brightness of the LCD.</p>
<i>Fn+F5</i>	<p>LCD / Video-out Switch</p> <p>Press this key combination to switch between :</p> <p>LCD mode only;</p> <p>Video-out mode only;</p> <p>LCD and Video-out simultaneously mode</p> <p>Notice : This function works under certain setting of OS, please refer to your instruction of OS.</p>
<i>Fn+F6</i>	<p>Touch Pad Enable/Disable</p> <p>Press this key combination to enable/disable Touch Pad function.</p>
<i>Fn+F7</i>	<p>Mute</p> <p>Press this combination to open/close output of audio signal.</p>
<i>Fn+F8</i>	<p>Voice weakening</p> <p>Press this key combination to weaken the voice output.</p> <p>Notice: This function works under certain setting of OS, please refer to your instruction of OS.</p>
<i>Fn+F9</i>	<p>Voice strengthening</p> <p>Press this key combination to strengthen the voice output.</p> <p>Notice: This function works under certain setting of OS, please refer to your instruction of OS.</p>
<i>Fn+F10</i>	<p>3.5G</p> <p>To activate 3.5G (Optional function)</p>
<i>Fn+F11</i>	<p>Bluetooth</p> <p>To activate Bluetooth</p>

1.9 Using the Touchpad

The built-in touch pad is a PS/2-compatible pointing device that senses movement on its surface. This means that the cursor responds as you move your finger on the surface of the touchpad. The central location on the palm rest provides optimum comfort and support.

The following teaches you how to use the touch pad:

Move your finger across the touch pad to move the cursor.

Press the left and right buttons located on the edge of the touch pad to do selection and execution functions. These two buttons are similar to the left and right buttons on a mouse.

Tapping on the touch pad produces similar results.

1.10 Using the built-in camera

The availability of the function depends on the configuration of M1022 Booktop you bought. The model you bought may be equipped with a built-in camera, and the built-in camera adds video functionality to instant messaging software and video editing software.

Tips: For using the built-in camera, see the help file on the utility software.

Tips: The built-in camera cannot be shared by more than one software application. If another application is using the camera, exit the application before using the built-in camera.

1.11 Using the Audio

You can control volume under your Windows operation system:

Click the volume icon on the task bar and use the buttons to adjust volume.

Or you can double-click the volume icon to activate Volume Control to adjust control items of volume.

Tips: You can use Fn combination keys to adjust volume. Please refer to “FN combination keys”.

Please adjust the voice down before you connect an external audio equipment, such as earphone or MIC.

1.12 Using the Wireless LAN (WLAN)

You can use Wireless LAN to connect to the network and use the Internet in your home and office, so there is no need anymore to pull cables or wires.

Connecting and using the wireless network

You can use the Function key (**1.8 Using the Launch Keys**) or Fn combination keys (**1.8 Keyboard Function**) to turn on wireless LAN

Right-click the Wireless network icon on the Taskbar and select View available wireless network

Select AP (Access Point) you want to connect to and type necessary information. Click

Connect. And If you place the mouse pointer on the Wireless network icon on the Taskbar, you can see the status of the wireless network.

○

Tips: You can learn details by referring to instruction document of wireless network.

○

The availability of the functions depends on the configuration of Booktop you bought, see the spec to see whether your model supports the function.

○

Notice: Creating security settings for the wireless LAN is important, We assume no responsibility for any security problems that may arise from the use of the wireless LAN.

○

1.13 Using the Battery Pack

M1022 Booktop computer is designed to operate with one of the following power sources:

*AC power (using the AC adapter connected to an electrical outlet)

*Lithium-Ion (Li-Ion) battery pack

You should use the AC adapter whenever possible; use the battery pack only when AC power is unavailable. The rechargeable Li-Ion battery pack allows you to operate your M1022 Booktop computer without an external power source. When you use the AC adapter to connect your M1022 Booktop to a power outlet, the internal battery will begin to recharge. While the battery is charging, the Battery Charge icon on the indicator panel will be on. Once the battery is fully charged, the Battery Charge icon will turn off. Quick charging time is 2.5 hours for the Lithium-Ion (Li-Ion) battery when the computer is turned off, while the normal battery charging time is 3.5 hours.

*Operating video, or audio equipment can increase the use of your computer's power.

*Decreasing monitor brightness can also save power.

*When the battery is not fully charged, allow your battery to be charged completely before using it (i.e., before disconnecting AC power). Calibrating the battery before use is also highly recommended.

*Li-Ion Battery is vulnerable; do not charge it with other power adapter, otherwise fire or explosion may occur.

Replacing the Battery

The battery will gradually weaken over time. We recommend that you replace your battery when you notice a significant decrease of battery capacity.

To change the battery pack, follow the steps below:

1. Turn off the computer.
2. Close the lid and flip the computer over.
3. Slide the battery latch. Continue to hold it until the battery is removed.
4. Make sure the replacement battery is properly oriented before inserting it into the battery compartment.

Note: The battery can not be charged to 100% when remaining battery is no less than 95%. It is based on the supplier's advice, and to extend charging frequency and battery life.

Maintenance of the AC Adapter

*Do not connect the adapter to any other device.

*Do not step on the power cord or place heavy objects on top of it. Carefully route the power cord and keep cables away from all traffic.

*When unplugging the power cord, do not pull on the cord itself but on the plug instead.

*If you are using an extension cord, make sure that the devices plugged onto the cord do not exceed its total capacity. Furthermore, the devices plugged into the electrical outlet shall not exceed the fuse's total ampere rating.

*Please verify power voltage before connecting the electrical cord to the power outlet. If you are uncertain of its power specification, please consult with your local vendors or power company for more details.

1.14 Connecting the AC Adapter

The AC adapter converts AC power to DC power and reduces the voltage supplied to the computer. It can automatically adjust to any voltage from 100 to 240 volts and outputs power at 12V, (12V, 3.0A for M1022), allowing you to use your M1022 Booktop computer in almost any region.

CAUTION: Use only the AC adapter and the power cord we recommend. Using the wrong adapter may damage your computer. We assume no responsibilities for damages arising from misuse of AC adapters.

To properly connect the adapter, follow the steps as below:

1. Connect the power cord to the AC adapter.
2. Connect the AC adapter to the DC power port of your computer.
3. Connect the AC adapter power cord to an AC outlet.

1.15 Installing M1022 Device Drivers

If your M1022 Booktop Computer already has an operating system installed, it is best to install all necessary device drivers in order for hardware to properly function.

Before installing drivers, check with your vendors to see if they have already installed all the

drivers with the operating system, if not, please follow the steps below:

1. You can find the Utility Driver CD like the one shown below:
2. Put the CD into the CD R-W or DVD-RW (optional) Drive. An Auto Run installation screen will appear.

1.16 Operating Temperature

Operating Temperature: 10°C to 40°C

Chapter 2 Battery

2.1 Battery Pack

Your **M1022 Booktop** is equipped with a high-energy rechargeable **Lithium Ion (Li-Ion)** battery pack. Battery life will vary depending on the product configuration, product model, applications loaded on the product, power management settings of the product, and the product features used by the customer. As with all batteries, the maximum capacity of this battery will decrease with time and usage.

2.2 Recharging The Battery Pack

Your **M1022 Booktop** supports both on-line and off-line recharge. Follow the procedure below to recharge battery:

*Make sure the battery pack is installed in the **M1022 Booktop**.

*Connect the AC adapter to the **M1022 Booktop** and to an electrical outlet.

When a battery pack is being recharged, its battery LED (located at the upper left corner of LCD display) would be lit. For details on the LEDs, please refer to *Chapter 1.3*. When the **M1022 Booktop** is OFF, a depleted Li-Ion battery will take three hours to recharge.

2.3 Questions And Answers

Q: I can feel a mild heat next to the battery pack. Is it normal?

A: The battery will generate heat during recharging and discharging. There is a protection circuit inside the **M1022 Booktop** to prevent overheating. User needs not to worry.

Q: My battery operation time is not as long as it should be. Why?

A: The battery is heat sensitive and can only be charged to its maximum if the battery and its environmental temperature remain within 15-25°C (59-77°F). The more the temperature deviates from this range during recharging, the less chance there is for the battery to be fully charged. In order to recharge the pack to its full capacity, users are requested to cool down the unit by unplugging the AC Adapter. Wait until it is cooled down. Then plug in the AC Adapter to start recharging again.

Q: I did not use my spare battery for a few days. Even though it was fully recharged, there wasn't as much power left as a newly charged one. Why?

A: The batteries will self-discharge when they are not being recharged. To make sure a battery pack is fully charged, recharge before use. Always keep the battery inside the **M1022 Booktop** and have the AC adapter connected whenever possible.

Q: I did not use my spare battery for months. I have problem in recharging it.

A: If you happen to leave your battery pack to go through an extended period of self-discharge, say more than three months, the battery voltage level will become too low and needs to be **Pre-Charged** (to bring the battery voltage level high enough) before it automatically (for Li-Ion only) resumes its normal **Fast Charge**. **Pre-Charge** may take 30 minutes. **Fast Charge** usually takes 2~3 hours.

2.4 Battery Maintenance

To maintain the battery pack's maximum capacity, you should occasionally let the **M1022 Booktop** deplete its battery power completely before recharging.

To carry out a complete depletion of the battery, disconnect the AC adapter and let your **M1022 Booktop** consume the remaining battery power. To speed up the depletion, use the HDD as much as possible. When the battery is empty, wait for the **M1022 Booktop** to cool down (especially the battery). The temperature should be within 15-25°C (59-77°F). Then insert the AC adapter to recharge the battery.

2.5 Power Consumption

The **Windows™** operating system has incorporated the latest state-of-the-art **ACPI (Advanced Configuration Power Interface)** power management methodology. In order to fully utilize the power of your battery packs, it would be a good idea for you to spend sometime to acquire a basic understanding of the power management concept from your operating system.

In **Windows™ Operating Systems**, you can go through **Power Options** of the **Control Panel** according to the version of **Windows™ Operating System** the **M1022 Booktop** applies. We shall not describe them in details.

2.6 Reducing Power Consumption

Although your **M1022 Booktop** (together with the operating system) is capable of power conservation, there are measures you can take to reduce the power consumption:

*Use the AC power whenever possible.

*Try to use the HDD drive to read and write files, instead of using the external USB FDD.

*Disable unused devices, such as Web Cam, WLAN, Bluetooth®, and etc.

*Decrease LCD panel brightness through Windows.

Note: Whenever system is powered on or powered off, make sure the battery pack is installed in the battery pack compartment.

2.7 Removing The Battery Pack

This battery pack can easily be removed and replaced. Make sure that the computer is properly shutdown before changing the battery pack. If you would like to change the battery pack while power is on, make sure this battery pack is not the only electrical source to the system unit. Follow the steps below to remove the battery pack.

- *Make sure the system is properly shutdown.
- *Flip the system upside down as shown.
- *Push the battery lock to the unlock position as shown by **#1**.
- *Push the battery latch to the unlock position as shown by **#2**.
- *Remove the battery pack as shown by **#3**.

To insert the battery pack, reverse the steps above.

2.8 Connecting System To AC Adapter

- *Connect **AC adapter** to system unit as shown by **#1**.
- *Connect **AC power cord** to **AC adapter** as shown by **#2**.
- *Connect other end of **power cord** to an electrical outlet as shown by **#3**.

Chapter 3 The Docking Station (Optional)

Depending on model, your Booktop computer is equipped with an optional Docking Station. This Docking Station supports hot plug-and-play with the system unit.

3.1 Docking Instruction

The creation of this device provides the Booktop with a vertical docking base for expansion use. The docking enables a solution of connecting to the external displays and to common computer peripherals as the portable laptop computer is well placed on the device. In order to avoid discomforts caused ill-human factor engineering by constant use. In addition, the docking is formed in vertical position which saves more space compared to the tradition desktop computers by advantage.

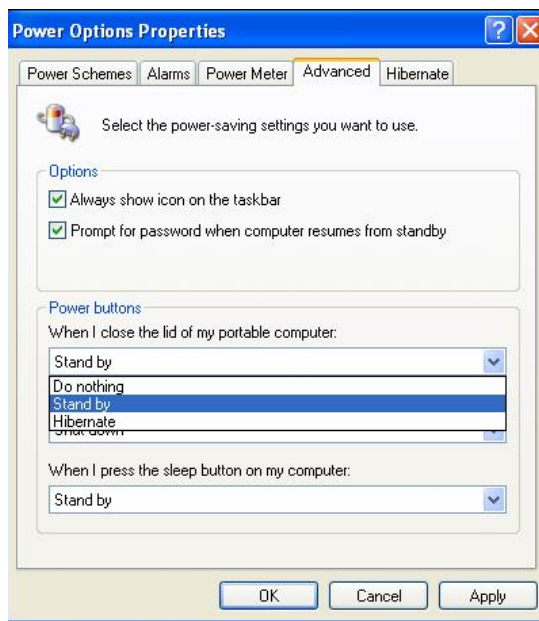
3.2 System lid switch

When we use the docking, we need to set up its status as “Stand by” in system.

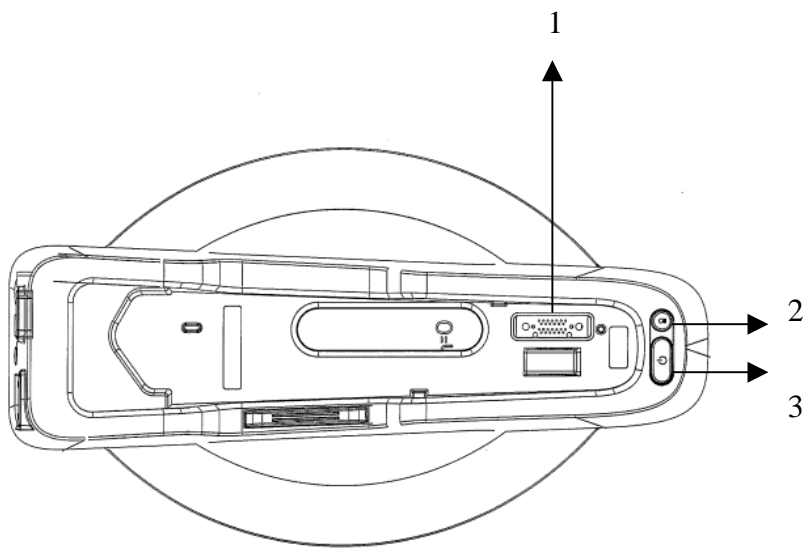
Pls follow below steps to set up:

Step1.Start → Control Panel→ Performance and Maintenance

Step2. Select Power Options → Advance → Sep up the status is “Stand by”



3.3 Different Views of the Docking Station



Panoramic View

- 1. Connector to System Unit**
- 2. Battery check button**
- 3. Power Button**

Note:

Battery Check Button:

1. S3/S4/S5 states can be workable if there is battery in system battery bay.
2. It's inactivity if system is in S0 state.
3. It's inactivity if there is no battery in system battery bay.
4. There're six indicators in Booktop. A dynamic LEDs to display for battery's capacity whatever the battery is in charging or discharging.

Above 90%: 6 indicators all light

74%~90%: show 5 indicators

58%~74%: show 4 indicators

42%~58%: show 3 indicators

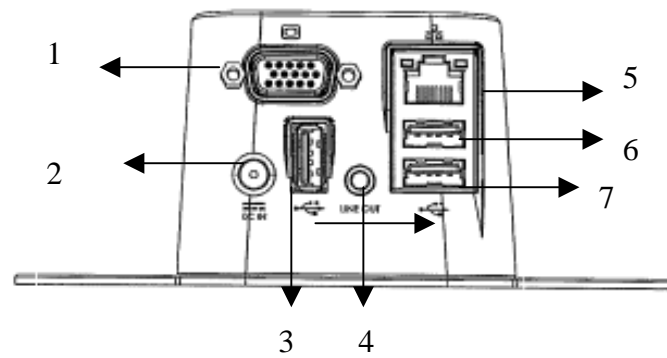
26%~42%: show 2 indicators

10%~26%: show 1 indicators

Under 10%: the lowest indicator flash

Power Button

1. Allowed system to turn on the power if system is attached to Docking and AC adapter is inserted to Docking's AC-IN jack.
2. Allowed system to enter the S3/S4/S5 as XP\power saving setting on Power button & capability of system resume via press this button.



Rear View

1. D-SUB
2. DC-in Jack
3. USB Connector
4. Line-out
5. RJ45 LAN Connector
6. USB Connector
7. USB Connector

3.4

Docking Resolution :1024 x 768

Chapter 4 The BIOS Setup program

The BIOS Setup Utility is a hardware configuration program built into your M1022 Booktop's BIOS (basic input/output system). Your M1022 Booktop is already properly configured and optimized, and you do not need to run this utility. However, if you encounter configuration problems, you may need to run it.

4.1 Using the BIOS Setup Utility

Your M1022 Booktop has a BIOS setup utility which allows you to configure important system settings, including settings for various optional functions of the computer. This chapter explains how to use the BIOS setup utility.

BIOS Setup Menu

The BIOS setup Utility allows you to configure your computer's basic settings. When you turn your computer on, the system reads this information to initialize the hardware so that it can operate correctly. Use the BIOS setup utility to change your computer's start-up configuration. For example, you can change the security and power management routines of your system.

Starting the BIOS Setup Utility

You can only enter the BIOS setup utility as the computer is booting, that is between the time you turn on the computer and before the Windows interface appears. If your computer is already on, shut down your computer completely (power off) and restart it and then press the F2 key to enter the setup utility.

Navigating and Entering Information in BIOS

Use the following keys to move between fields and to enter information:

← →	Select Menu
	Push the up and down arrow keys to move among selections,
Enter	Select or enter to the Sub-Menu
F1	Help
F7/F8	Change Values
F9	Setup Default
F10	Save and Exit
ESC	Press Esc to exit any section. If you wish to exit the BIOS utility <i>without</i> saving changes, go to the main menu, then press Yes .

Users are allowed to enter new values to replace the default settings in certain fields, and the rest fields are specified by system default parameters and cannot be modified by users.

Reverse the attribute of the main options and press the Enter key to enter into the submenu.
Press the **Esc** key to return to the previous configuration page.

Menu	Description
Main	The Main screen displays a summary of your M1022 Booktop hardware information, and also includes basic setup parameters.
Advanced	This screen contains parameters involving your hardware devices.
Security	The Security screen contains parameters that help safeguard and protect your M1022 Booktop from unauthorized use.
Boot	To set the order of booting equipments, enabling or disabling equipments.
Exit	To exit the interface of setting system.

Tips: For more information about Menu and Keys, please refer to the help information of respective selection.

There may be difference of BIOS setting between different versions of BIOS of different batch of M1022 Booktop produced.

Notice: The BIOS of your M1022 Booktop has been initialized to best settings. It's advised you not to change it if not so necessary.

Tips: The pictures showed at this chapter may be different from those showed by your M1022 Booktop due to different versions of BIOS. Please set pictures of your M1022 Booktop as standard.

4.2 The Main Menu

InsydeH20 Setup Utility

Main		Advanced	Security	Boot	Exit
System BIOS Version M1022.v10.				Item Specific Help	
Processor Type	Intel ® Atom™ CPU N270 @ 1.60GHz			F7: Reduce Number; F8: Increase Number; No action for Number Keys	
System Bus Speed	533MHz				
System Memory Speed	533MHz				
Cache RAM	0512 KB				
Total Memory	1024 MB				
System Time	[19:14:50]				
System Date	[Thu 01/01/2009]				
F1 Help	↑ ↓	Select Item	F7/F8 Change Values	F9 Setup Default	
ESC Exit	← →	Select Menu	Enter Select ► Menu	F10 Save and Exit	

System Time

Allows you to change the system time using the hour:minute:second format of your M1022 Booktop computer.

Enter the current time for each field and use the <F7>, <F8> key to move from one field or back to another.

You can also change the system time from your operating system.

System Date

Allows you to set the system date using the month/date/year format.

Enter the current time for each field and use the <F7>, <F8> key to move from one field or back to another.

You can also change the system time from your operating system.

4.3 Advanced Menu

InsydeH20 Setup Utility	
Main	Advanced
<ul style="list-style-type: none"> ▶ Boot Configuration ▶ Peripheral Configuration ▶ IDE Configuration ▶ USB Configuration ▶ Platform Power Management (Power Manual) Advanced S3: [Disable, Default] [Enable] Keyboard language: [US, Chinese, Default] <ul style="list-style-type: none"> [Disable] [US, Chinese] = 01h [U] = 02h [Japan] = 03h [Korea] = 04h [Germany] = 05h 	Item Specific Help Configures Boot Settings.
F1 Help ↑ ↓ Select Item F7/F8 Change Values F9 Setup Default ESC Exit ← → Select Menu Enter Select▶ Menu F10 Save and Exit	

4.4 Security Menu

InsydeH20 Setup Utility				
Main	Advanced	Security	Boot	Exit
Supervisor Password : Not Installed User Password : Not Installed Set Supervisor Password Set User Password			Item Specific Help Install or Change the password and the length Of password must be Greater than one word.	
F1 Help ↑ ↓ Select Item F7/F8 Change Values F9 Setup Default ESC Exit ← → Select Menu Enter Select▶ Menu F10 Save and Exit				

Set Supervisor Password

A supervisor password must be set before a lower-level user password can be set. After selecting **Change Supervisor Password**, press **Enter**. You will be prompted for the new password, and then again to verify it. Type in 6 or fewer keystrokes. If you make an error, press **Esc** to start over.

Set User Password

With a User password, you can enter the Setup Utility and change or remove the User password, but you cannot enter the Setup Utility and change or remove the Supervisor password, nor enable diskette access if it has been disabled.

4.5 Boot menu

InsydeH20 Setup Utility	
Main Advanced Security Boot Exit	
Quiet Boot [Enable] USB boot [Enable] ACPI Selection [ACPI 3.0] ▶ Boot Type Order ▶ Hard Disk Drive	Item Specific Help Disables or enables Booting in Text Mode.
F1 Help ↑ ↓ Select Item F7/F8 Change Values F9 Setup Default ESC Exit ← → Select Menu Enter Select▶ Menu F10 Save and Exit	

Boot Type Order Sub-menu

InsydeH20 Setup Utility	
Boot	
Boot Type Order	Item Specific Help
Hard Disk Drive USB CD/DVD ROM Driver USB Memory Others	Keys used to view or configure devices; Up and Down arrows select a device. <F7> and <F8> moves the device up or down.
F1 Help ↑ ↓ Select Item F7/F8 Change Values F9 Setup Default ESC Exit ← → Select Menu Enter Select ► Menu F10 Save and Exit	

Hard Disk Drive Sub-menu

InsydeH20 Setup Utility	
Boot	
Hard Disk Drive	Item Specific Help
WDC WD1600BEVT-22ZCT0	Keys used to view or configure devices; Up and Down arrows select a device. <F7> and <F8> moves the device up or down.
F1 Help ↑ ↓ Select Item F7/F8 Change Values F9 Setup Default ESC Exit ← → Select Menu Enter Select ► Menu F10 Save and Exit	

4.6 Exit Menu

InsydeH20 Setup Utility

Main Advanced Security Boot Exit	
Exit Saving Changes Exit Discarding changes Load Optimal Defaults Discard Changes	Item Specific Help Exit system setup and save your changes.
F1 Help ↑ ↓ Select Item F7/F8 Change Values F9 Setup Default ESC Exit ← → Select Menu Enter Select ► Menu F10 Save and Exit	

Chapter 5 Introduction to Smart Manager:

GIGABYTE™



www.gigabyte.com.tw



Brightness:

Move the slider to temporarily adjust the brightness of your display. To adjust the display brightness settings for your power plan, click the icon on the **title** to open Power Option in Control Panel.

Volume:

Move the slider to adjust the speaker volume of your Booktop or select the Mute check box.

Resolution:

Click on the icon to change the resolution. There are two specs in the M1022 series.

- a) 1024 x 600 panel :: 800 x 600, 1024 x 600
- b) 1366 x 768 panel :: 800 x 600, 1366 x 768

Rotation:

This function only supports 2 rotation styles.

1. Normal mode: 0 degree
2. Vertical mode: 90 degree

Click on the Active icon to rotate your display.

On-Screen Keyboard:

To Active the keyboard.

Click on the Active button will detect the On-Screen Keyboard status.

Calibration:

Click on this button to active the Penmount Calibration utility (4 ways calibration)

Bluetooth:

Click on the icon to active the Bluetooth sync-center.

Power:

Click on this button to call the computer power sequence. (Suspend, Hibernate, Power off, Restart)

Battery Status:

AC-IN / Battery Life time:

a)If the AC power adapter plug-in, the icon will show 'AC-IN', and if unplug the AC power adapter, the icon will show the battery life and counting the battery life time.

Media Q-button:

Press this button to call the default media player

Computer Q-button:

Press this button to call the my computer function.

WebCAM Q-button:

Press this button to call the E-CAM webcam pre-view utility.

E Q-button:

Press this button to call the Microsoft Internet Browser.

Normal Mode:

Press this icon to activate the Booktop power plan and set the brightness to middle high level “60%”

Presentation Mode:

Press this icon to activate the Presentation power plan and set the brightness to middle level “44%”.

Always-on Mode:

Press this icon to activate the Always-on power plan and set the brightness to high level “100%”.

Max-Battery Mode:

Press this icon to activate the Max-battery power plan and set the brightness to low level “20%”.

Chapter 6 Troubleshooting / Q&A

This chapter contains advice and solutions to a few basic troubles you might encounter when you use M1022 Booktop. Please refer to this chapter and follow the instructions to solve troubles.

6.1 Troubleshooting

Warning: Under the condition that you can't handle trouble, please refer to your dealer to get professional service.

AC Adapter

Trouble	Solution
No power supplies to M1022 Booktop	Make sure the AC adapter is well connected to the power source and M1022 Booktop.
	Check the cable and plug to make sure they are OK. If they are broken, please contact your local dealer ASAP.

Battery pack

Trouble	Solution
No power supplies to M1022 Booktop	The remaining power in battery pack may be not enough to power on the machine. Connect AC Adapter to recharge it.
Can't be recharged after connecting AC Adapter	Check temperature of battery pack's surface. Battery pack can't be recharged if its temperature is too high or too low. Recharged it after its temperature is the same with the normal environment one.
	If battery pack is fully discharged, it won't be recharged at once. Please wait for some minutes.
	If the power indicators of battery pack are always not lit up, its life may be over. Please contact your dealer to buy another one.
Battery life is not as long as it should be	Battery life depends on using condition of M1022 Booktop. You can change the settings in Power Manager of OS to save power.
	Battery pack can't exert its full capacity if it works when not fully recharged frequently. Power M1022 Booktop by battery pack until its power drops to a critically low level and the machine emits a high-pitched beep or displays a warning message; after that, recharge battery pack to make battery pack work longer.

Warning: Please pay attention to the following information regarding the battery pack:

1. Be sure to recycle the waste batteries.
2. Do not place the batteries near high-temperature locations, fire source or in burning fire as this may cause the batteries to explode
3. Do not assemble/disassemble /modify the batteries without authorization.
4. Use the battery pack provided by the original manufacturer only. Batteries other than those supplied by the original manufacturer may damage the device.

Keyboard

Trouble	Solution
Press character keys but number displayed instead of character	Check if Num Lock is activated.
Confusing display	Make sure there is no software to configure the keyboard.

Warning: Please pay attention to the following information about keyboard maintenance.

1. Dust build-up may occur to the keyboard after long-term use. It is recommended to clean the keyboard with a small brush. Please shut down the machine before cleaning the surface of the keyboard and wipe it with a soft cloth dipped in cleaner or water gently.
2. In case any liquid enters the keyboard, shut off the power supply immediately, remove the batteries and contact the original manufacturer directly for repair. Do not disassemble the keyboard yourself for repair.

Hard disc drive (HDD)

Trouble	Solution
HDD can't be booted	The operating system is corrupted by incorrect operation or virus. Try to clean virus and then configure your operating system correctly.
	Maybe the documents of your OS run in error; please refer to the manual of your OS.
HDD performs very slowly	There is too much file fragment. Use disk defrag tools to rearrange the programs on the hard disk.

Warning: Please pay attention to the following information about Hard Drive maintenance.

1. The hard disk is a high-speed data storage device. Avoid using the Booktop in unstable locations as far as possible to prevent hard disk damage and data loss.
2. Please use the computer in accordance with normal startup/shutdown procedures; improper startup/shutdown may shorten the service life of the hard disk

LCD

Trouble	Solution
The screen is blank	Press hot key Fn + F5 to change the display mode if certain external monitor is connected.
	Make sure the system isn't in the mode of Hibernation or Standby.

WARNING: Please pay attention for below matters at mounting design of touch panel of LCD module.

1. Do not put a heavy force along the edge of active area
2. Do not put a heavy shock or stress on the panel and film surface.
3. Do not put heavy goods on the panel.
4. The LCD screen is the most fragile component of the Booktop and is prone to rupture under external forces. Do not place any object on the keyboard or between the keyboard and the screen to prevent damage to the LCD screen.
5. When traveling with Gigabyte M1022 Booktop, place it in a special case in a tidy manner as far as possible. Excess objects may squeeze the machine and therefore damage the LCD screen.
6. Do not touch the screen with sharp objects or fingers directly.
7. It is recommended that the LCD screen be wiped with a special screen cleaning cloth. Wipe the screen gently to avoid breakage of the screen.
8. Prevent any liquid from entering the LCD screen as this may damage the elements of the LCD screen.

Printer

Trouble	Solution
The data can't be output from M1022 Booktop to printer	Make sure printer is powered on.
	Make sure its cable is OK and its USB interface is well connected to M1022 Booktop.
	Make sure your printer is compatible to your M1022 Booktop.
Error printing	Please refer to the user's manual of your printer for help.

Audio

Trouble	Solution
No sound emitted	Adjust sound controller.
	Check the setting of sound volume of software.
	Check if the ear phone is firmly connected.

	Check the Devices Manager of Windows. Be sure the Sound function has been activated and isn't interfered with other hardware.
--	---

USB

Trouble	Solution
Equipments connected can't work	Check and be sure USB port of M1022 Booktop is firmly connected with the USB cord of the equipment.
	Be sure the driver of the equipment is installed correctly.

Stand by / Hibernation

Trouble	Solution
Can't enter into Standby /Hibernation	Please check if the Windows Media Player is running. If Yes, the M1022 Booktop can't enter into Standby or Hibernation mode. Please close Windows Media Player.

LAN

Trouble	Solution
Can't be connected	Be sure the RJ45 connector is firmly connected to the Network Hub or Switch.
Can't be booted	Check the configuration of hardware in BIOS Setup Utility and activate the function of LAN Waken.

6.2 Q&A

Q: My computer switches to hibernation mode much too quickly, and I have to constantly hit a key or move the mouse to bring back the screen. What can I do?

A: This is part of Windows Power Management. Access Power Management by clicking on Start / Control Panel / Performance and Maintenance / Power Options, and change the time next to the "Turn off monitor" option to the time you want. You have the choice of either adjusting time for the power supply or for the battery.

Q: I've heard that cleaning and rearranging files on the hard drive will improve program's launch speed, how do I do that?

A: Good disk maintenances can improve program launch speed. This normally includes deleting unnecessary files, and defragmenting hard disk so that files can be more efficiently grouped. Windows contains maintenance utilities for these tasks; run Disk Cleanup to remove unnecessary files, and Disk Defragmenter to defragment file blocks. For more information about these utilities, please refer to your Windows documentation.

Q: What kind of external microphone can I use with my Booktop computer?

A: You will need to use a self-amplifying microphone.

Q: There are echoes coming from my speakers. What can I do?

A: Double click on the Speaker icon on the task bar. Then, under Microphone Balance, check the Mute box.

Q: Because of a software problem, I was unable to shut the computer down from Windows, I pressed the power button to power off the computer, but it didn't work. How can I force a power off?

A: Make sure you press the power button for at least 4 seconds. Normally, this will force the computer to shut off.

Q: Why can't I charge the battery of my portable computer after it was out of use for some time?

A: After your portable computer has not been used for a long time (say, more than a month), the battery will enter into low voltage protection mode. Under this circumstance, restoring to normal voltage will require the battery to be slowly charged for several hours. Once the battery has been fully charged, your computer will resume to normal operation.

Q: My computer says: "CMOS Battery Low", what should I do?

A: If your computer is without power (i.e. unplug the computer power source from the power outlet and remove the battery pack from it) for over 45 days, you would lose the information stored in CMOS.

Please follow the steps below to reconfigure your CMOS settings:

1. Press F2 to enter into the BIOS setup utility.
2. Select "Load Optional Defaults?". When you see the following prompt, choose <OK> and then press <Enter>.
3. Select "Save Changes and Exit", select <OK> and press <Enter> to restart your computer.

Q: How to unplug or eject devices

A:

1. In the notification area next to your task bar, double-click the Safe Removal icon. Safe Removal displays a list of Plug and Play devices that support safe removal and that are currently attached to the system.

If you do not see the Safe Removal icon, your device does not support safe removal, and you cannot unplug or eject your device using Safe Removal.

2. In Safely Remove Hardware, in the list of devices, select the device that you want to unplug or eject, and then click Stop. This tells the system that you will be unplugging or ejecting the device.
3. In Stop a Hardware device, click OK.

A notification appears stating that it is now safe to unplug or eject the device.

Caution

Unplugging or ejecting a device that supports safe removal without first using the Safe Removal application to warn the system can cause data to be lost or your system to become unstable. For example, if you use Safe Removal, however, you can warn the system before you unplug or eject a device, preventing possible loss of data.

Note

For removable storage devices that can safely be removed while the system is on, the system disables write caching by default. It does this so the devices can be removed without loss of data. When write caching is disabled, however, the system will likely experience slower performance, so be sure to enable write caching when you have finished removing the device.

Q: Does M1022 provide a hardware switch or function button to enable/disable the Bluetooth function?

A: M1022 provides a combined function button to enable/disable the 3G (Fn+F10) and Bluetooth (Fn+F11) functions.

Q: What are the considerations for the use of the touch control screen?

A: In accordance with the principle of panel structure, the surroundings of the touch control panel are highly sensitive. Hence, drawing lines along the surroundings of the chassis is strictly prohibited as this may damage the Pet/film due to extreme pressure or cause the internal liners/pads on the edges of the outer shell to displace, therefore squeezing the edges of the touch control screen and causing the screen to fail.

Q: What is the capacity of SDHC card that M1022 can support?

A: The specification of SDHC that M1022 SD card reader supports shall be in accordance with that of the SD Association. Currently, the maximum capacity announced by SD Association is 32GB
<http://www.sdcard.org/developers/tech/sdhc/>

Q: How can M1022 be upgraded in the DOS and Windows mode?

A: Please refer to [how to upgrade M1022 in the DOS and Windows mode?](#)

Q. Can M1022 change the 2.5-inch SATA interface SSD and install it for use with Windows XP itself?

A. Currently the M1022 series delivered by Gigabyte does not support SATA SSD. In case of any version update in the future, the specification will be announced on the website of Gigabyte.

Q . What is the function of the Installed O/S option in the BIOS menu?

- A. In the M1022 BIOS configuration screen, select the operating system you install from [Advanced] setting-> option,
As long as you install any of the following operating systems
Windows XP,
Windows Vista, or
Linux Ubuntu,
you need to choose the “WinXP” option.

In the meanwhile, you should note that if the above operating systems are set to “Other”, or an incorrect option is set for other operating system, it is possible that the ACPI data may not be read properly by the operating system.

Appendix I Specification

Processor

Intel® Atom 1.6GHz N270

OS

Microsoft Windows XP compliance / Linux/ VISTA

Core Logic

Intel® 945GSE

1

Memory

DDRII-533 SO-DIMM X 1, Max 2 GB

For the compatible HDDs & RAMs by model, please refer to GIGABYTE AVL List

Video Interface

Intel® 945GSE

Display

10.1”LCD panel/WSVGA 1024x600

10.1”LCD panel/WXGA 1366x768

Hard Disk Drive

2.5” ,9.5mm S-ATA HDD 160/250/320GB/500GB

Optical Drive

External ODD by USB connection

Input Device

80 key keyboard/Touch Pad

I/O Port

USB X 3, Mic in/Earphone out/D-SUB

RJ45 / SD/MMC/MS Card Reader / Express card

Audio

Speaker 1.5 watt x 2

Bluetooth

Bluetooth 2.1 built-in

Web Camera

1.3M pixel CMOS camera

LAN/Wierless LAN

802.11b/g/n by mini-card

Keyboard

80 key keyboard

Protection

Kensington lock

Battery

6 Cell Li-ion 7650Ah, Battery (Standard)

Dimension &Weight

265 x 195 x 38.5mm

~1.3kg (Including 6 cell battery)

Service

1 year global warranty

1 year battery warranty

More service information, please refer to

<http://www.gigabyte.com.tw>

.....

Tips: The above specification is for users' reference. The final configuration depends on the M1022 Booktop users bought.

Appendix II Recovery Update Notices

How to restore your Booktop to factory defaults

Time to restore: When your computer is infected by virus or there is any other reason that you want to restore your operation system to the factory defaults.

Execute Xpress Recovery3 Lite (XR3 Lite) Professional Recovery Utility. Please take the following procedures:

1. Start up your computer first. Restart your computer if it has already booted into system.
2. Right after you see the startup screen (such as trademark, logo or text), the DOS screen will appear. Press F9.
 - F9 is a typical hotkey to restore professional settings. Please consult with your computer manufacture if your hotkey doesn't function.
3. There are four options on the menu: "RESTORE" (to restore data), "ABOUT" (to display XR3 software related information) and "REBOOT" (to cancel the recovery and restart the computer). We recommend you to select "RESTORE" to restore factory defaults



4. Then the prompt "Restore Image?" will appear on the menu. We recommend you to select "YES" to restore an image file.* "Image file" is a compressed file that compresses all the Windows operation system data. Recovery an image file allows you to restore your operation system to factory defaults.



5. After all the selections have been made, the screen shows "RESTORE NOW...", indicating your computer is now recovering the operation system data. When the recovery is complete, the computer will automatically restart and restore to factory defaults.



Appendix III Service Centers and Policy

This appendix will list our global service centers for your Booktop computer.

.....

6F, No.36, Jien-Yi Rd., Chung-Ho, Taipei Hsien, Taiwan.

TEL: +886-2-8227-6136

FAX: +886-2-8227-6163

WEB Address (English): <http://www.gigabyte.com.tw/>

WEB Address (Chinese): <http://www.gigabyte.tw/>

.....

TEL: +1 (626) 854-9338

FAX: +1 (626) 854-9339

WEB Address: <http://www.gigabyte.us>

.....

China

WEB Address: <http://www.gigabyte.com.cn/>

Shenzhen

TEL: +86-755-8240-8099

FAX: +86-755-8240-8066

Guangzhou

TEL: +86-20-87540700

FAX: +86-20-87544306

Beijing

TEL: +86-10-62102838

FAX: +86-10-62102848

Chengdu

TEL: +86-28-85236930

FAX: +86-28-85256822

Wuhan

TEL: +86-27-87851312

FAX: +86-27-87851330

Xian

TEL: +86-29-85531943

FAX: +86-29-85519336

Shenyang

TEL: +86-24-83992901

FAX: +86-24-83992909

Russia

TEL: +7-495-9136685

WEB Address: <http://www.gigabyte.ru/>

Germany

TEL: +49 40 25330433

Address: BULLENKOPPEL 16 22047 HAMBURG

Warranty Clause

1. This warranty clause is applicable to discounted products and brand new products of Gigabyte purchased by consumers or in Taiwan or products purchased overseas, which shall be subject to appropriate warranty conditions. For products outside the warranty scope or period, contact the quick service centers of Gigabyte for repair and charge for the work.
2. The warranty of the products of Gigabyte shall commence from the date specified on the invoice issued by the dealer. Consumers shall keep the purchase invoice properly to safeguard the legal rights and interests.
3. To identify the warranty period of various products, please visit related web pages of Gigabyte at <http://service.gigabyte.tw/> for query. The dealer shall be responsible for the warranty provided or sold by the dealer itself.
4. The warranty period of this product shall be 2 years from the purchase date. The transformers and batteries supplied with the product are consumables; Gigabyte provides one-year warranty for the transformers and batteries and 6-month warranty for the MID batteries from the purchase date.
5. The commencing date of warranty of products distributed or redistributed by business partners shall be determined in accordance with Article 2.

6. This warranty does not cover the pre-installed software products, operating system, consumables and other accessories (e.g. gifts/rucksack/disk/mouse/packaging material, etc).
7. In the absence of the sales invoice of the special dealer of Gigabyte, the warranty period will be determined based on the Gigabyte label and serial number on the product.
8. In case there is no Gigabyte label or serial number on the product, the serial number does not match the product or is illegible, no warranty or after-sales service will be extended. In case of any need for repair, contact the original dealer for assistance.
9. In case of any defect or malfunction in the product within 7 days from the purchase date (except for the circumstance listed in Article 13), the consumer may request the original dealer to replace the product with all accessories in the original packaging as well as the sales proof with a new one; otherwise, the defect or malfunction will be treated by means of repair.
※In case that the dealer has no stock for immediate replacement, it shall contact the agent as soon as possible for replacement.
10. In case of any defect in the appearance of a new product attributed to human negligence, no request shall be made to Gigabyte for replacement with a new one.
11. Any product sent for repair shall be packed using the original packing material of the manufacturer or appropriate materials (e.g. paper carton, air bag or poly foam). In case of damage during transit due to improper packaging, Gigabyte will not provide warranty services.
12. In case that a product sent for repair during the warranty period cannot be repaired, Gigabyte will replace the product with a comparable new product or an equivalent one.
13. This warranty will become invalid if the product fails or is damaged for the following reasons:

(1) Natural disaster, accident or human negligence

(6) Unauthorized disassembly

(2) Violation of the operating instructions in the user manual of the product

(7) Abnormal use

(3) Improper assembly or request for installation service

(8) Line or part oxidation

(4) Use of unauthorized accessories

(9) Use of the product as testing device (e.g. RAM, VGA and USB test)

(5) Use of the product not in the permitted environment

(10) Problems and malfunction resulting from computer virus

14. In case of sending portable computer, mobile computer or MID for repair during the warranty period of NB machines (purchased within 2 years) or Booktop/MID machines (purchased within one year), pack the photocopy of the invoice together with the product properly, contact the technical service hotline at 0800-079-800 at 09:30~20:30 (Monday through Friday) or

09:30~17:30 (Saturday) (service code: 7) and Gigabyte will arrange specialized personnel to pick up the machine free of charge.

15. Considerate reminder !!! Be sure to backup important data before sending the product for repair. Gigabyte is responsible for the repair and test of the product only and will not provide services such as data backup, etc. Gigabyte will not assume responsibility for any data loss during the repair process.
16. In case of door-to-door inspection or adjustment service without replacement of parts after the expiration of the warranty period, outdoor service fee will be charged according to the charging rules of the service company.

FEDERAL COMMUNICATIONS COMMISSION INTERFERENCE STATEMENT

This equipment has been tested and found to comply with the limits for a Class B digital device, pursuant to Part 15 of the FCC Rules. These limits are designed to provide reasonable protection against harmful interference in a residential installation. This equipment generates, uses and can radiate radio frequency energy and, if not installed and used in accordance with the instructions, may cause harmful interference to radio communications. However, there is no guarantee that interference will not occur in a particular installation. If this equipment does cause harmful interference to radio or television reception, which can be determined by turning the equipment off and on, the user is encouraged to try to correct the interference by one or more of the following measures:

- Reorient or relocate the receiving antenna.
- Increase the separation between the equipment and receiver.
- Connect the equipment into an outlet on a circuit different from that to which the receiver is connected.
- Consult the dealer or an experienced radio/TV technician for help.

CAUTION:

Any changes or modifications not expressly approved by the party responsible for compliance could void the user's authority to operate the equipment.

This device complies with Part 15 of the FCC Rules. Operation is subject to the following two conditions:

- (1) This device may not cause harmful interference and
- (2) This device must accept any interference received, including interference that may cause undesired operation.

RF exposure warning

.

This equipment must be installed and operated in accordance with provided instructions and must not be co-located or operating in conjunction with any other antenna or transmitter. End-users and installers must be provided with antenna installation instructions and transmitter operating conditions for satisfying RF exposure compliance.

other antenna or transmitter.

Max. SAR Measurement (1g)

802.11 b/g/n: 0.112W/kg