

SmaFinger.NET[®]

Quick Start

September 6, 2010

Quick Start to connect the SF650 on the Ethernet

Step 1

Connect SF650 to Ethernet HUB with (WAS-T0413) cable.

Note:

You can also connect SF650 to your PC or Laptop directly with same cable.



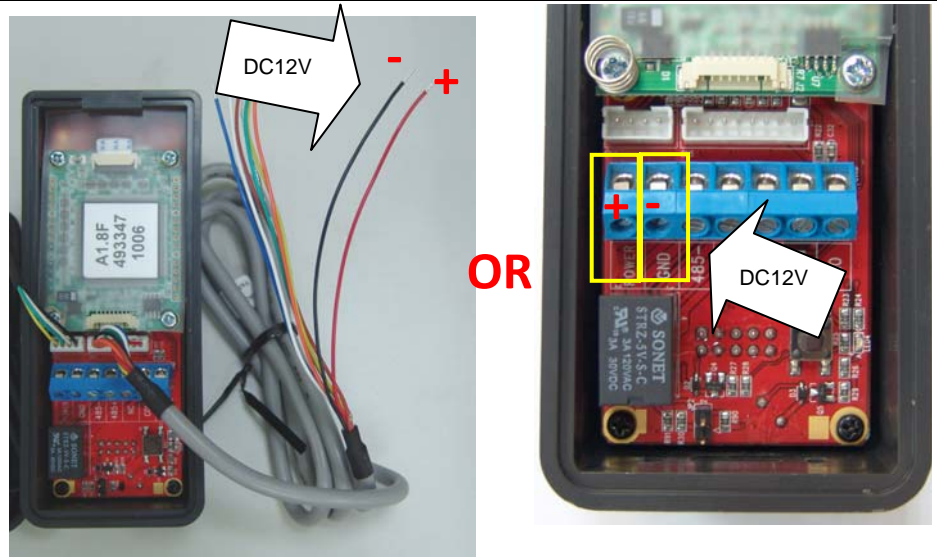
Step 2

Connect Power **DC12V** with (WAS-T0132) Cable

Remark:

The WAS-T0132 can be used for Power.

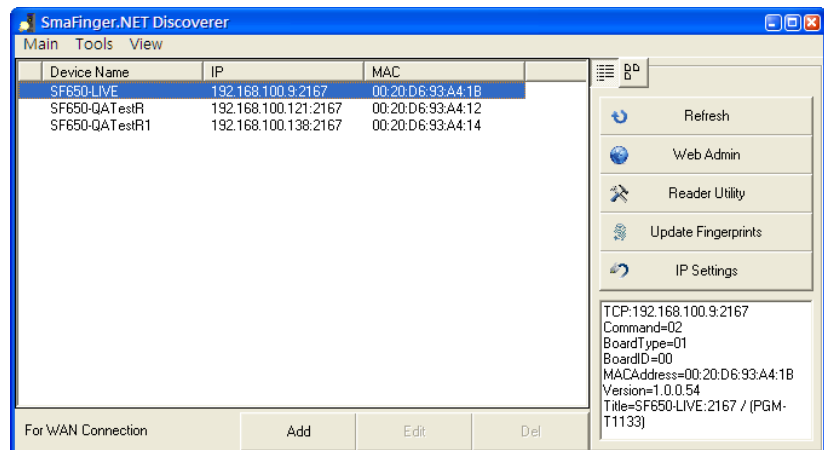
Or, you can connect the power to the PIN VCC and GND (blue connector of SF650).



Step 3

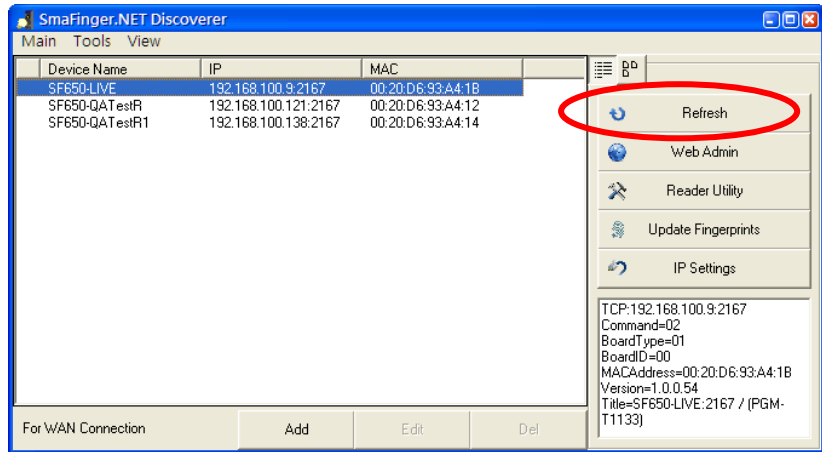
Use “SmaFinger.NET Discoverer” utility to search all SmaFinger.NET device(s) on the network.

(The utility can be found in the CD disk5406).



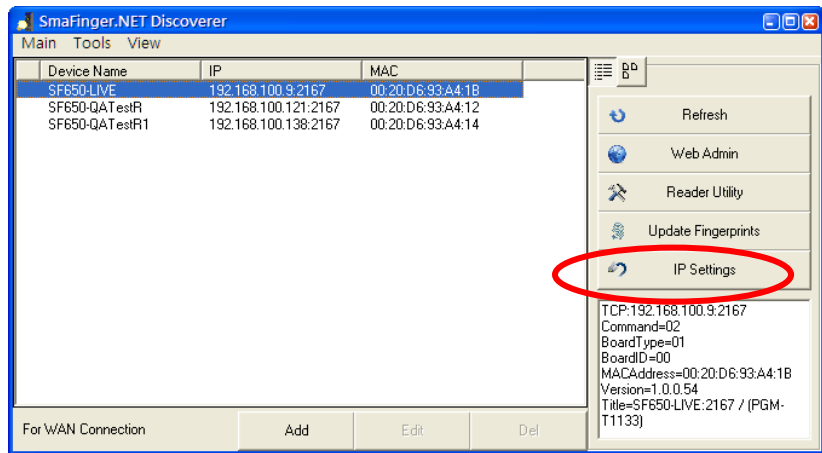
Step 4.

Click "Refresh" to refresh the SmaFinger.NET list.



Step 5.

Click "IP Settings" to change the new device name.

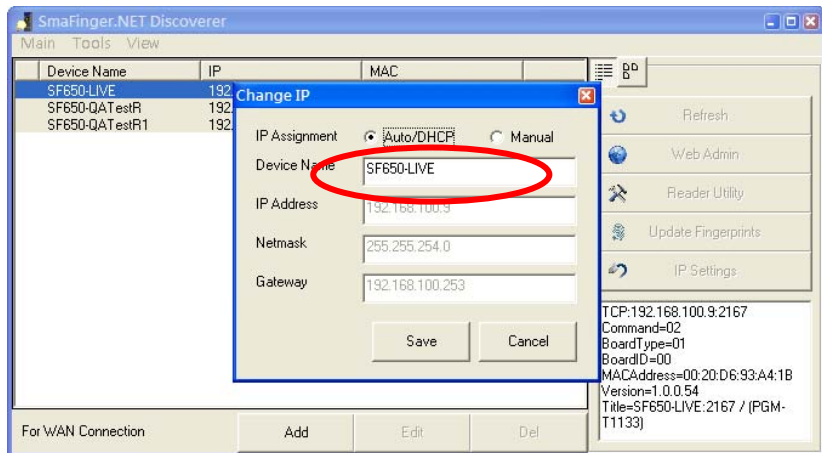


Step 6.

Edit the SF650 device name for easy recognition.

Click "Save" to change the settings.

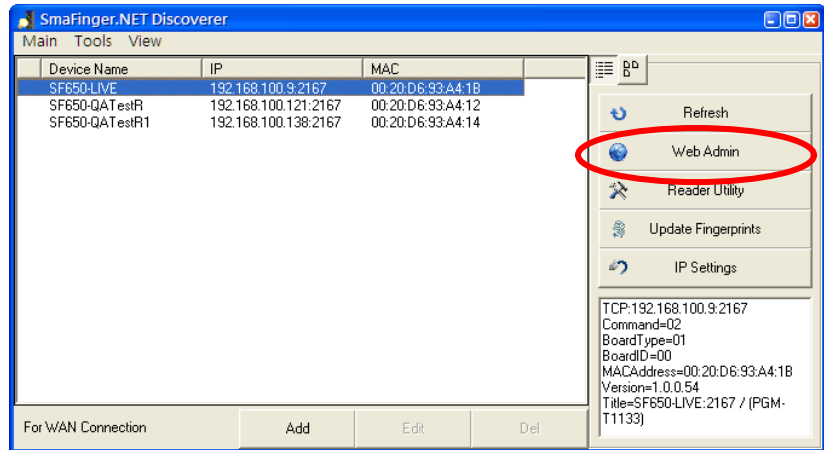
NOTICE: If you need use manual IP, you can click "Manual" and setup the correct IP you used.



Control Device with Internet Browser

Step 1

Use “SmaFinger.NET Discoverer” utility to search all available SmaFinger.NET device(s) on the network.
Click “Web Admin” to go to the Web Administrator Utility.



Step 2

On Login page, to login to the SF650 device.



Step 3

Login on the SF650

Default username & password:
username: admin
password: admin



Add a new user and fingerprints with Internet Browser

Step 1

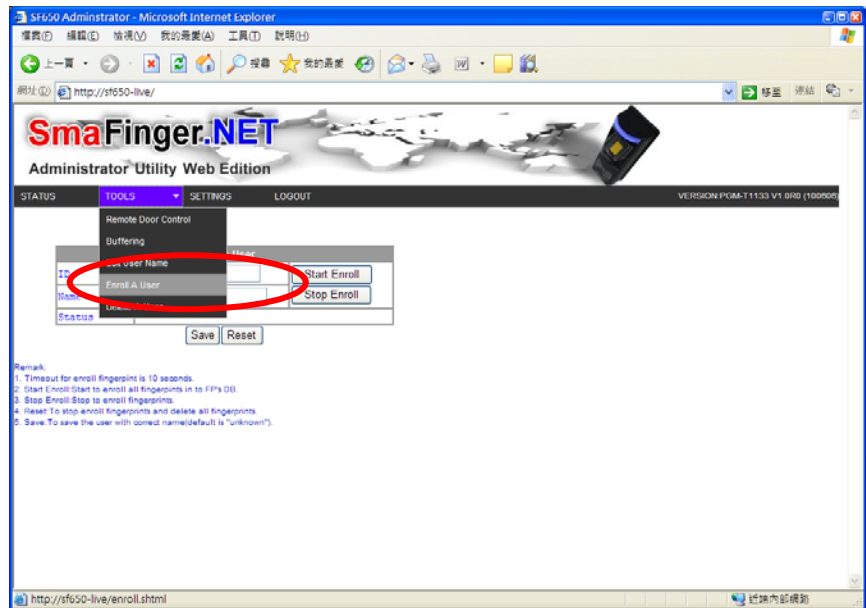
Login Web Admin Page.

Refer to " **Control Device with Internet Browser**"



Step 2

Click "Enroll A User" on the "Tools" menu of SF650 Administrator utility page.



Step 3

Click the "Start Enroll" to start the enroll process.

Please put the fingerprint on reader twice and the "Status" will show how many fingerprints enroll success.

Type in the new user's name and click the "Save" to finish a new user adding.

Note:

If you want to cancel the process, please click "Stop Enroll" or click "Reset" to cancel all fingerprints enroll with this user.



Remark:

1. Timeout for enroll fingerprint is 10 seconds.
2. Start Enroll:Start to enroll all fingerprints in to FP's DB.
3. Stop Enroll:Stop to enroll fingerprints.
4. Reset:To stop enroll fingerprints and delete all fingerprints.
5. Save:To save the user with correct name(default is "unknown").

Setup time zone with Internet Browser

Step 1

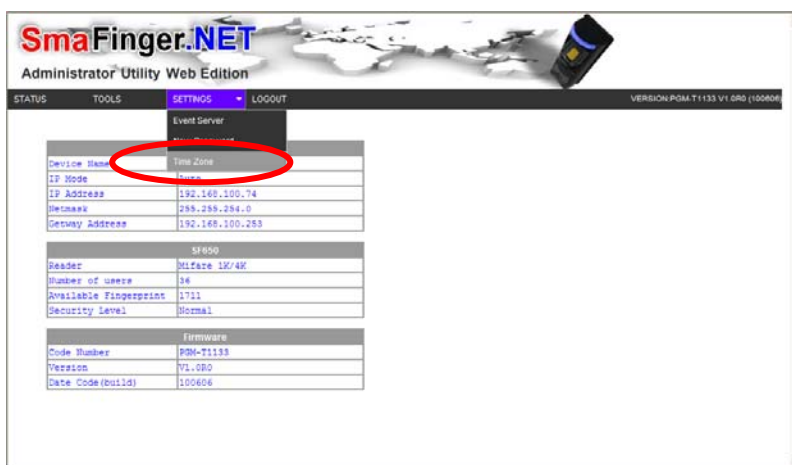
Login Web Admin Page.

Refer to " **Control Device with Internet Browser**"



Step 2

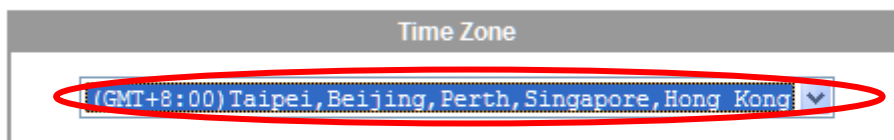
Click "Time Zone" on the "Settings" menu of SF650 Administrator utility page.



Step 3

Choose the time zone for local.

Click "Save" to setup the current time zone



Remote Control the door lock with Internet Browser

Step 1

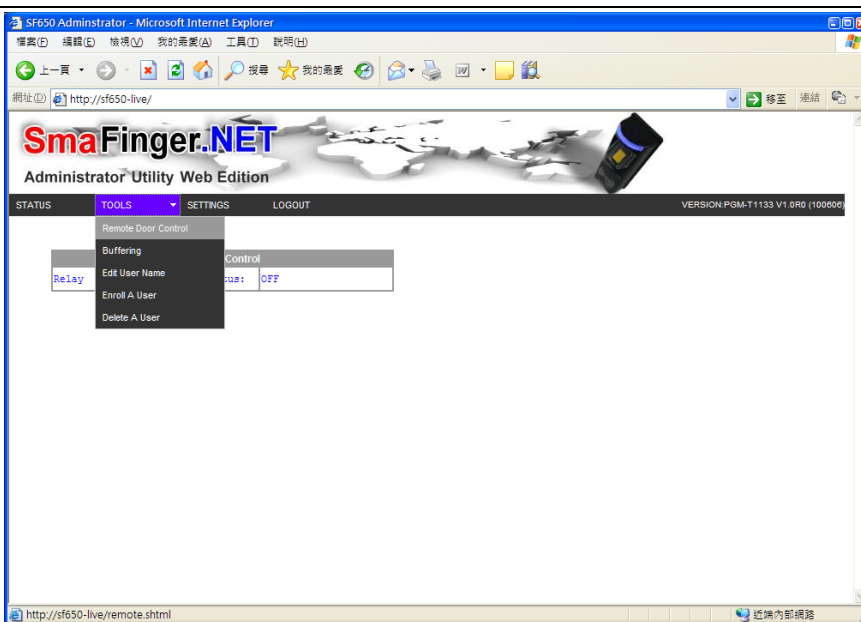
Login Web Admin Page.

Refer to " **Control Device with Internet Browser**"



Step 2

Click "Remote Control" on the "Tools" menu of SF650 Administrator utility page.

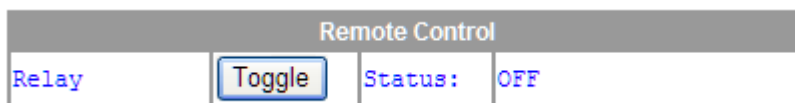


Step 3

Click the "Toggle" to toggle the relay of SF650.

Note:

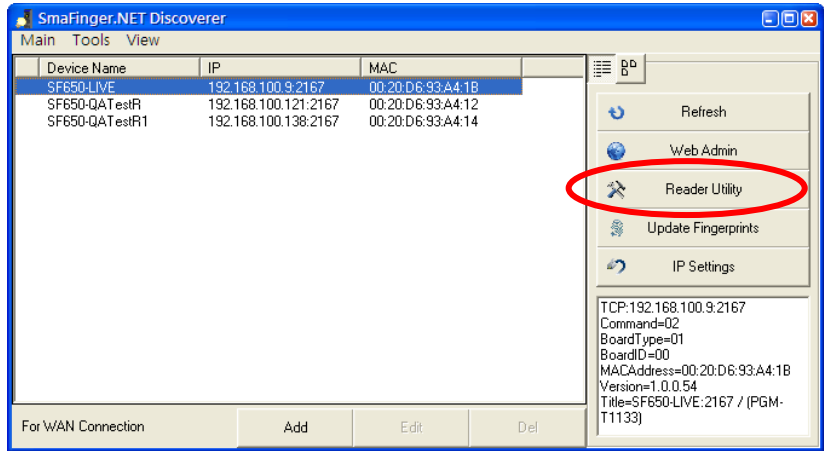
The SF650 supports the AJAX technology which displays the relay status automatically.



Configure the SF650 reader functions

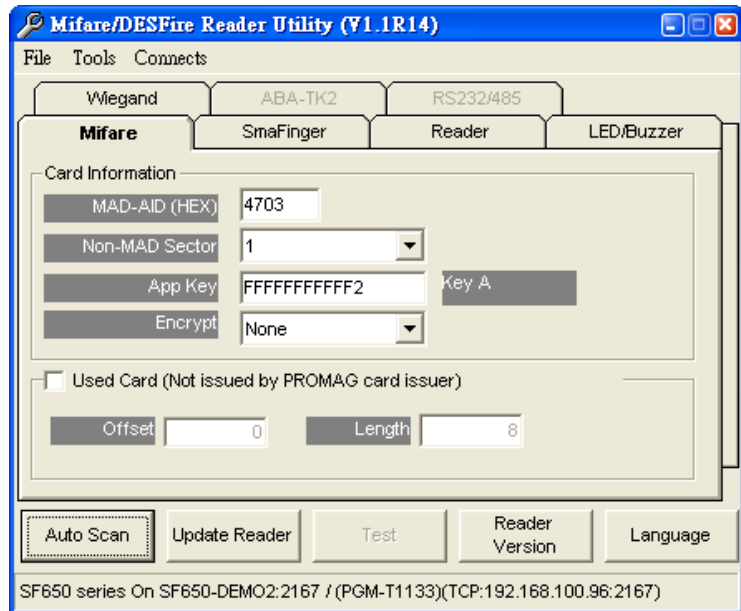
Step 1

Use “SmaFinger.NET Discoverer” utility to search all available SmaFinger.NET device(s) on the network. Then select the device you want to configure the reader functions and click the “Reader Utility”



Step 2

The discoverer utility will execute the “Mifare/DESfire Reader Utility” and display the selected SF650 device.



How to change PC/Laptop network setting to support the Auto IP mode

Step 1

Most of the PC/Laptop network default setting is "Obtain an IP address automatically" (auto IP mode). If not, you can follow the steps to change the network setting to auto IP mode.

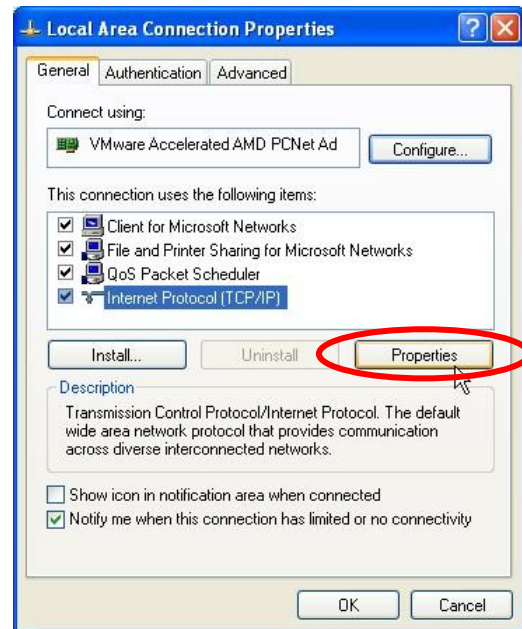
Go to:

Control Panel > Network and Internet Connections > Local Area Connection Properties



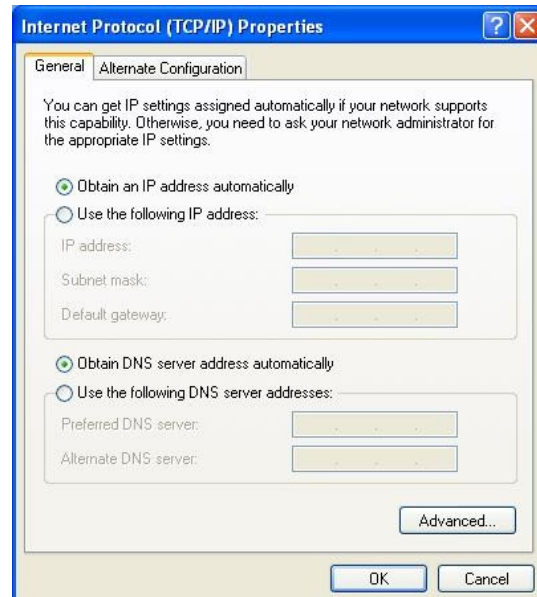
Step 2

General select Internet Protocol (TCP/IP) and click Properties.



Step 3

Select the "Obtain an IP address automatically." then click "OK".



Step 4

Connect the SF650 to PC/Laptop via Ethernet cable then Power On the SF650.



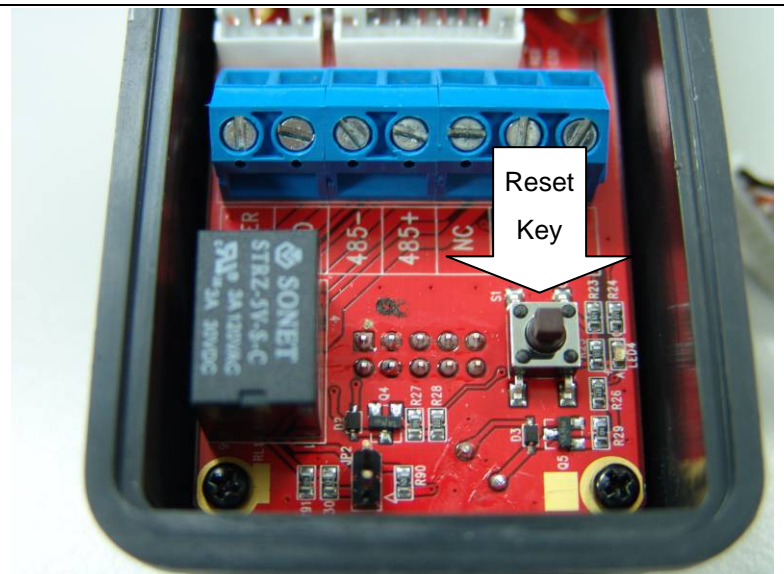
How to go back to default settings

When password is lost, forgotten or need to reset the device to the auto IP mode.

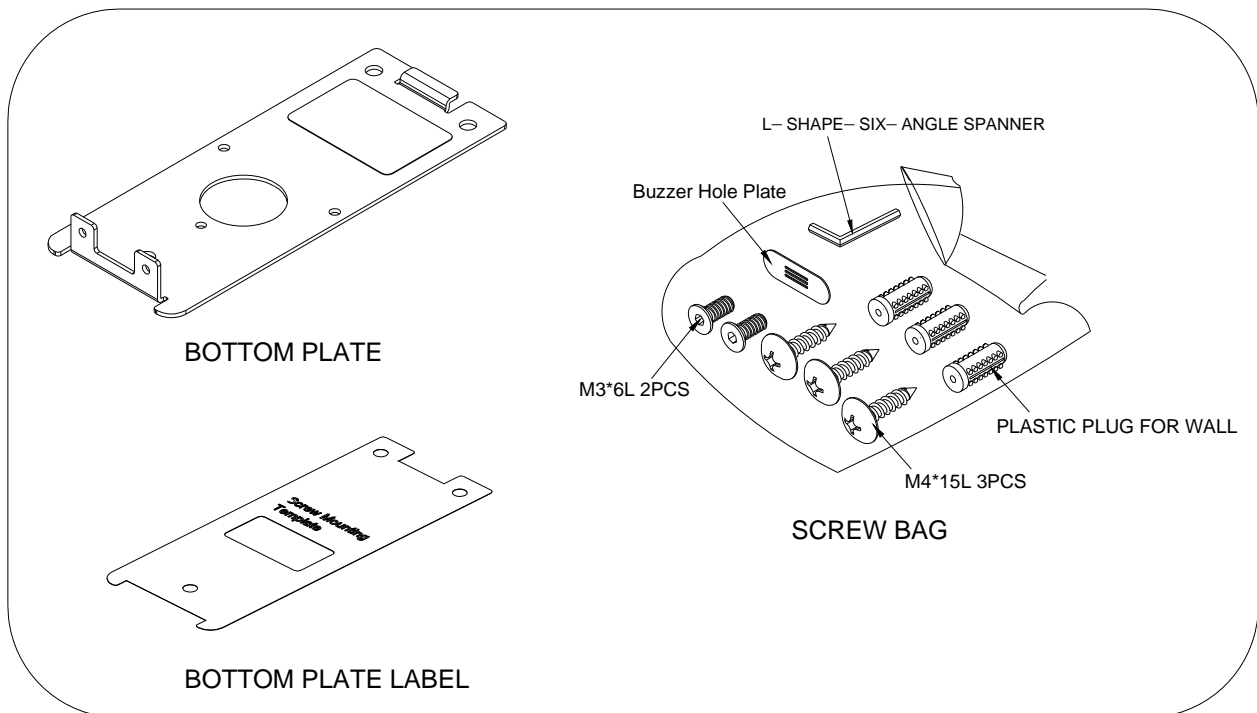
You can press the Reset-Key for 5 seconds, the SF650 will reset automatically and go back to default setting. The password is "admin" and IP mode will set to auto IP mode.

Some settings will remain the same when reset to default:

1. Device name
2. MAC address
3. Reader functions
4. Fingerprint Template database
5. User Data

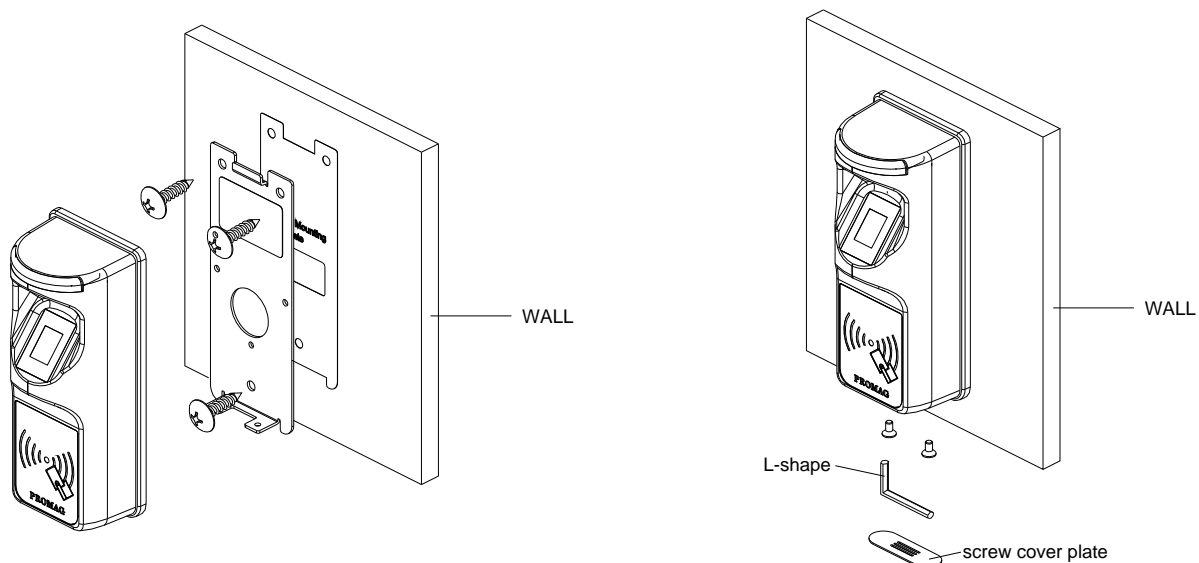


Required Items



Secure Mounting Installation

1. Attach the bottom plate label on the target position. Drill the holes to match the bottom plate then fix SmaFinger reader.
2. After fixing SmaFinger with attached screws (using the L-shape spanner), apply screw cover plate for completion.



**CAUTION:**

The crossed out wheeled bin label that can be found on your product indicates that this product should not be disposed of via the normal household waste stream.

To prevent possible harm to the environment or human health please separate this product from other waste streams to en-sure that it can be recycled in an environmentally sound manner.

For more details on available collection facilities please contact your local government office or the retailer where you purchased this product.

This information only applies to customers in the European Union.

For other countries, please contact your local government to investigate the possibility of recycling your product.

FCC Warning Statement

This device complies with Part 15 of the FCC Rules.

Operation is subject to the following two conditions:

- (1) this device may not cause harmful interference, and
- (2) this device must accept any interference received, including interference that may cause undesired operation.

POWER	12V
CURRENT	200mA@12V(MAX)
INTERFACE	RS485 / RS232/TK2/WIGEND/TCP-IP
CARD TYPE	ISO14443A
FERQUENCY	13.56MHz
TRANSPONDER	Reader

PROMAG®

GIGA-TMS INC.

<http://www.gigatms.com.tw>

<mailto:promag@gigatms.com.tw>

TEL : +886-2-26954214

FAX : +886-2-26954213

Office: 8F, No. 31, Lane 169, Kang-Ning St., Hsi-Chih, Taipei, Taiwan