

Table of Contents

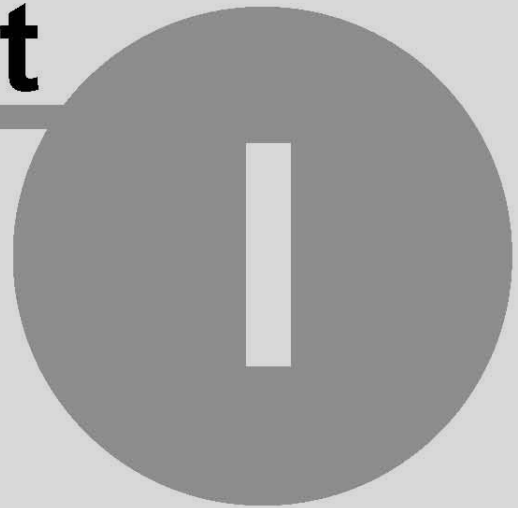
Foreword	0
Part I Installation	4
1 Package Contents.....	4
2 Mounting/Suspending.....	4
Wall-Mount Bracket	4
Suspending	6
3 Powering the Device.....	7
4 Configuring the Device.....	8
Offline Configuration	8
Language and Sound.....	8
Date & Time.....	10
Online Configuration	11
Ethernet Configuration.....	11
Ethernet Direct	11
Ethernet Direct Configuration.....	12
Ethernet Via Switch.....	20
Ethernet Via Switch Configuration.....	21
Part II Operation	30
1 Admin Registration.....	30
Admin ID and PW	30
Admin FP	32
Admin Card	35
Admin FP + Card	37
Admin Verification	40
2 User Registration	42
User ID and FP	43
User Card	46
User Password	48
User FP + Card	50
User Verification	54
3 Offline Operation.....	57
Data Management	57
Delete saved data.....	57
Delete all records.....	58
Make all as "New".....	58
Recover data.....	58
USB	60
Download data.....	60
Part III Appendix	62
1 Wiring options for TR4080.....	62

Index**0****FCC Warning Statement**

This device complies with Part 15 of the FCC Rules. Operation is subject to the following two conditions:

- (1) this device may not cause harmful interference, and*
- (2) this device must accept any interference received, including interference that may cause undesired operation.*

Part



1 Installation

This part describes the mounting of TR4080, powering up and connecting it offline and online for configuration.

1.1 Package Contents

The TR4080 Time Recorder standard package consists of

SL. NO.	ITEM	QUANTITY
1	TR4080 Time Recorder	1
2	CD with Software and Manuals	1
3	Administrator Card	1
4	User Card	2
5	Ethernet Cable WAS 1499	2 meters
6	Power Adaptor 12V DC	1
7	Template	1
8	Wall-Mount Bracket	1
9	Pack of Screws	1

Note: The following Giga-Tms make network adaptors will be supplied if ordered additionally.

1. RS232-USB Adaptor



2. RS485-USB Adaptor

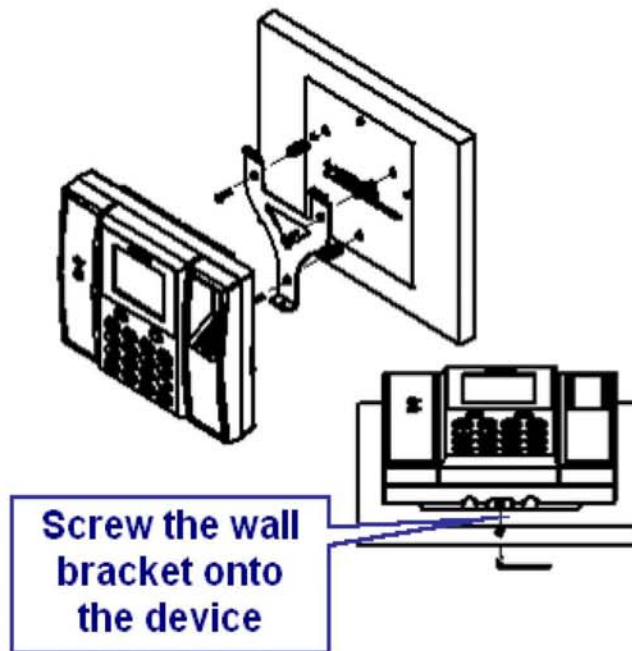


1.2 Mounting/Suspending

TR4080 can be mounted or suspended on the wall.

1.2.1 Wall-Mount Bracket

1. Using the template in the package mark drilling points on the wall.
2. Fix the metal bracket onto the wall.
3. Mount TR4080 onto the metal bracket and secure it to the bracket as shown below.

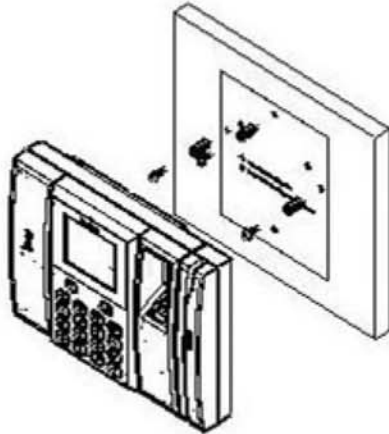


Note:

1. Before mounting the device you may connect the cables to the device. To do this please see Configuring the Device
2. TR4080 Time Recorder is designed for indoor application.
3. Keep the fingerprint sensor clean for peak performance.

1.2.2 Suspending

1. Using the template in the package mark drilling points on the wall.
2. Drill and fix the screws.
3. The device can be suspended on the screws by the screw openings on its rear side.



Note:

1. Before suspending the device connect the cables to the device. Please see Connecting the Device for cable connections.
2. TR4080 Time Recorder is designed for indoor application.
3. Keep the fingerprint sensor clean for peak performance.

1.3 Powering the Device

1. Connect the jack pin of the 12V power adaptor to the socket in the cable bay of the device.



2. Plug the adaptor to the supply mains socket.



3. Power ON the TR4080.



4. Power ON the TR4080 (front view)



5. Mega Time logo and version number will appear first.



6. The start up is complete when the time display appears.



1.4 Configuring the Device

Date and Time and Volume level can be set in Offline or Online connection.

1.4.1 Offline Configuration

1.4.1.1 Language and Sound

1. Scan the Administrator Card to enter main page.



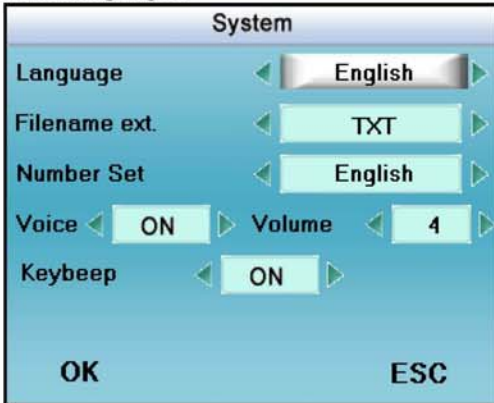
2. Select **System** icon using keys \blacktriangledown \blacktriangleright . Press the button below OK.



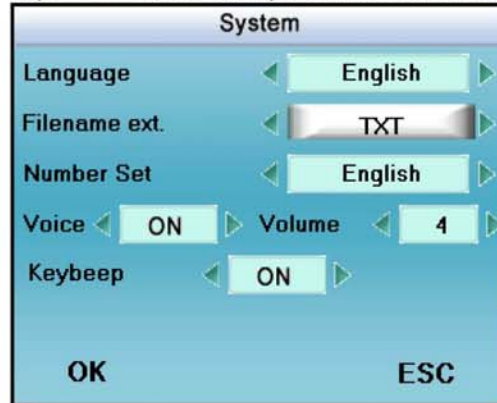
3. Select **System** again on the next page and press OK.



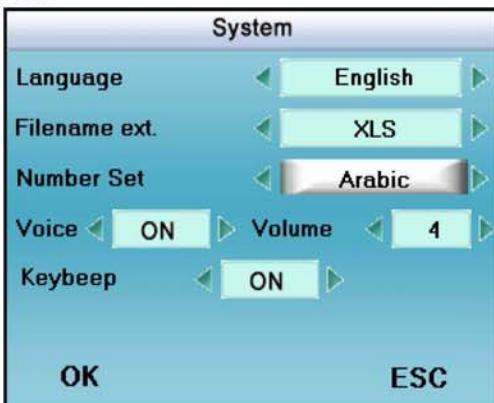
4. Press keys **◀ ▶** and select any of the listed languages.



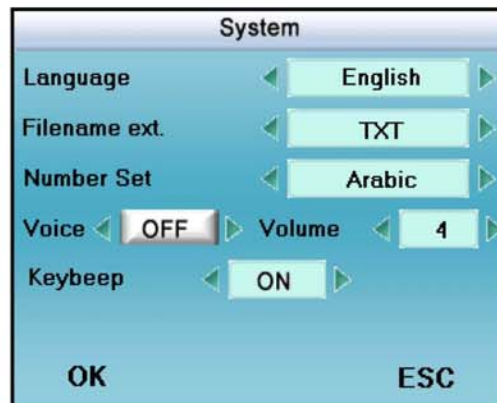
5. Press key **▼** and select **Filename ext.** And then using keys **◀ ▶** choose any of the listed formats.



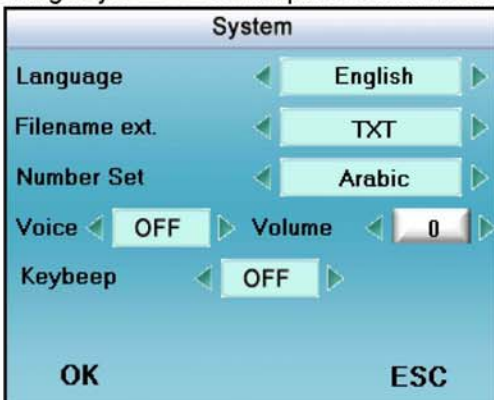
6. Press key **▼** and select **Number Set** and then using keys **◀ ▶** choose the any of the listed sets.



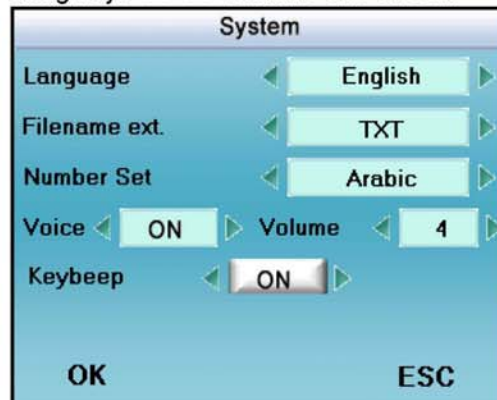
7. Press key **▼** and select **Voice** and then using keys **◀ ▶** switch it **OFF** or **ON**.



8. Press key **▼** and select **Volume** and then using keys **◀ ▶** set required volume level.



9. Press key **▼** and select **Key beep** and then using keys **◀ ▶** switch it **OFF** or **ON**.



1.4.1.2 Date & Time

set your local date and time, choose their format and if applicable select daylight saving time

1. Select **Date/Time** icon using key \blacktriangledown . Press the button below OK.



2. Using keypad numbers and keys \blacktriangleleft \blacktriangleright \blacktriangleup \blacktriangledown , enter Date and Time.



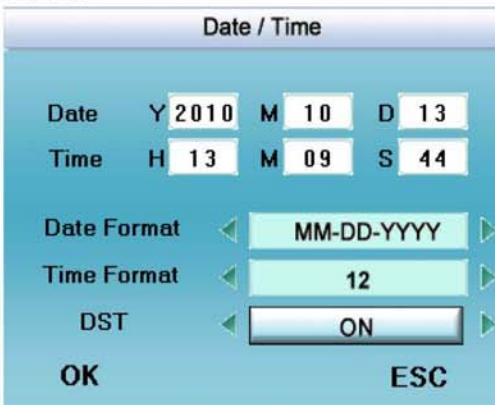
3. Press key \blacktriangledown and select **Date Format** using keys \blacktriangleleft \blacktriangleright .



4. Press key \blacktriangledown and select **Time Format** using keys \blacktriangleleft \blacktriangleright .



5. Press key \blacktriangledown and select **DST** using keys \blacktriangleleft \blacktriangleright .



6. The new time and date will be displayed.



1.4.2 Online Configuration

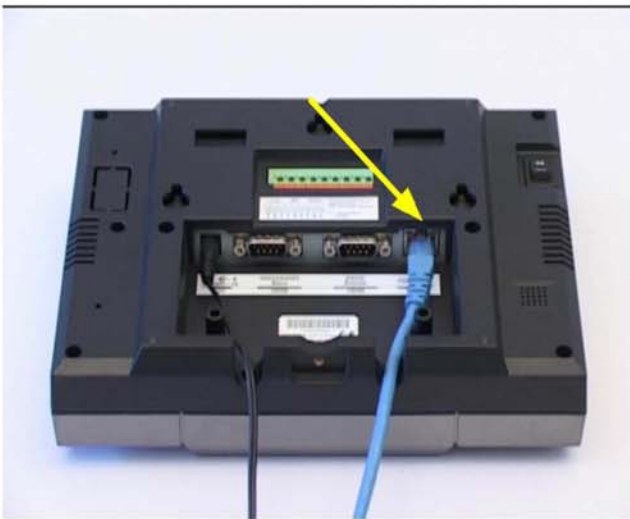
1.4.2.1 Ethernet Configuration

TR4080 can be connected to Ethernet port of a PC directly or via Switch. The connection along with initial settings are described in the following two sections.

1.4.2.1.1 Ethernet Direct

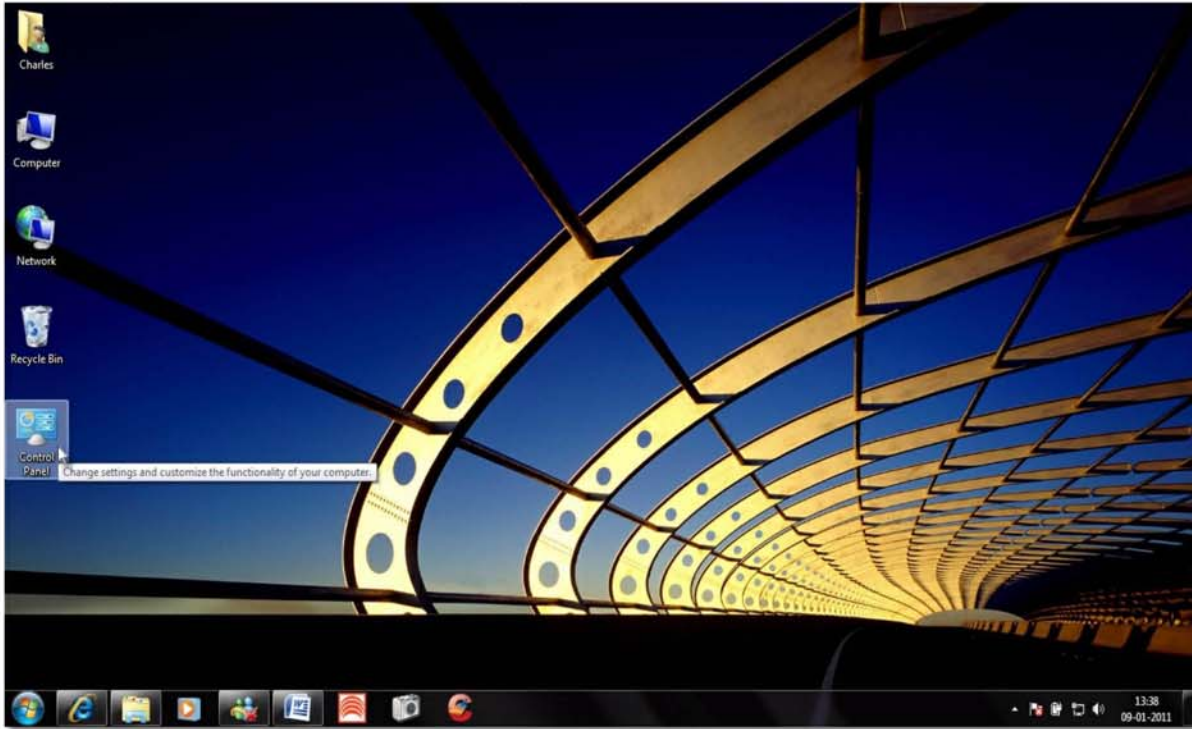
1. Connect the RJ45 cable to socket in the cable bay.

2. Connect the other end of the RJ45 cable to PC.

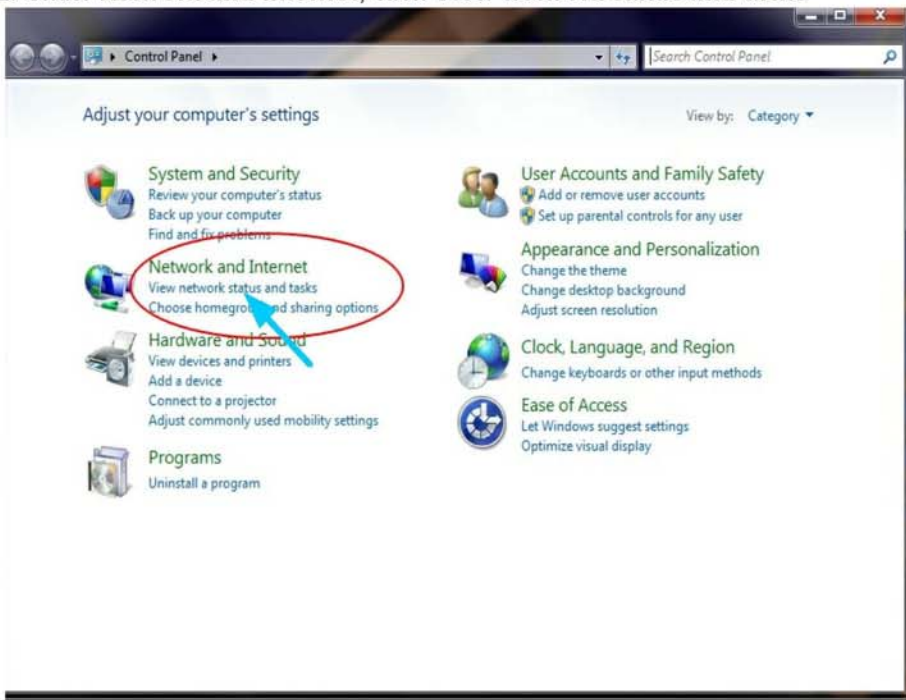


1.4.2.1.1.1 Ethernet Direct Configuration

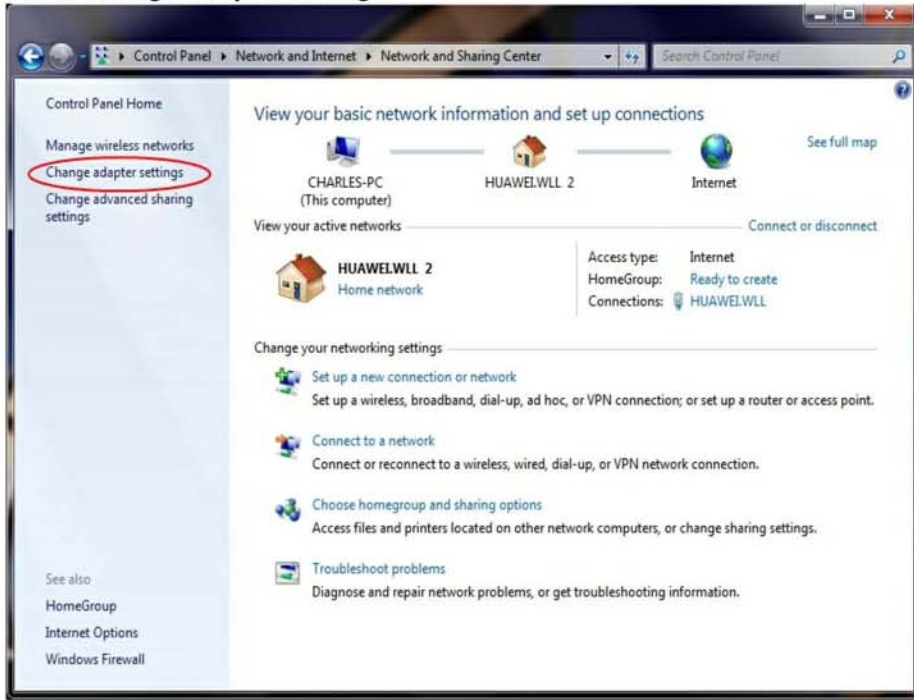
1. Click open **Start/Control Panel** or **Desktop/Control Panel**



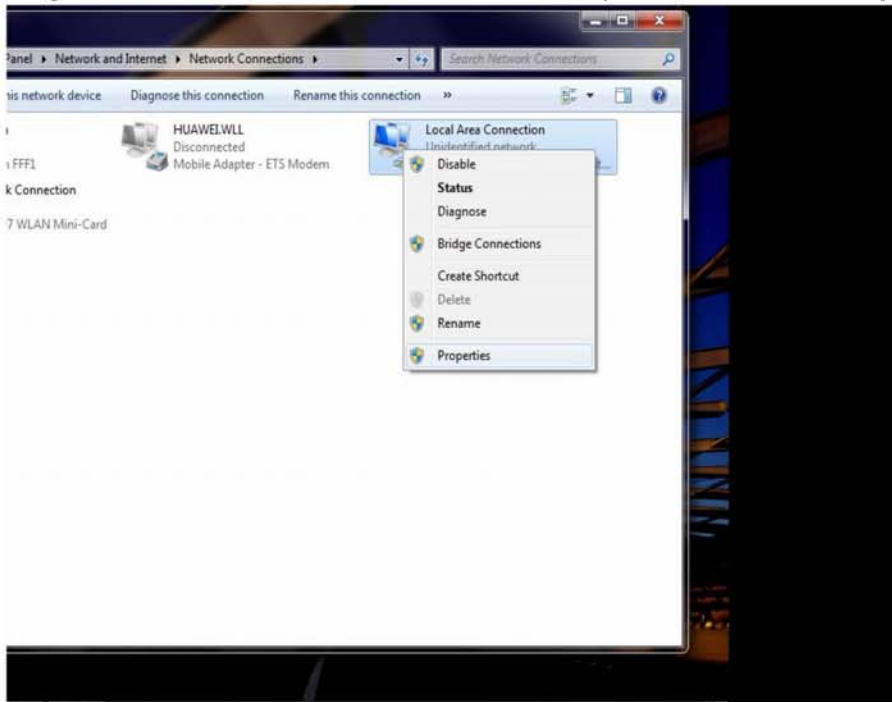
2. Under **Network and Internet**, click **View network status and tasks**



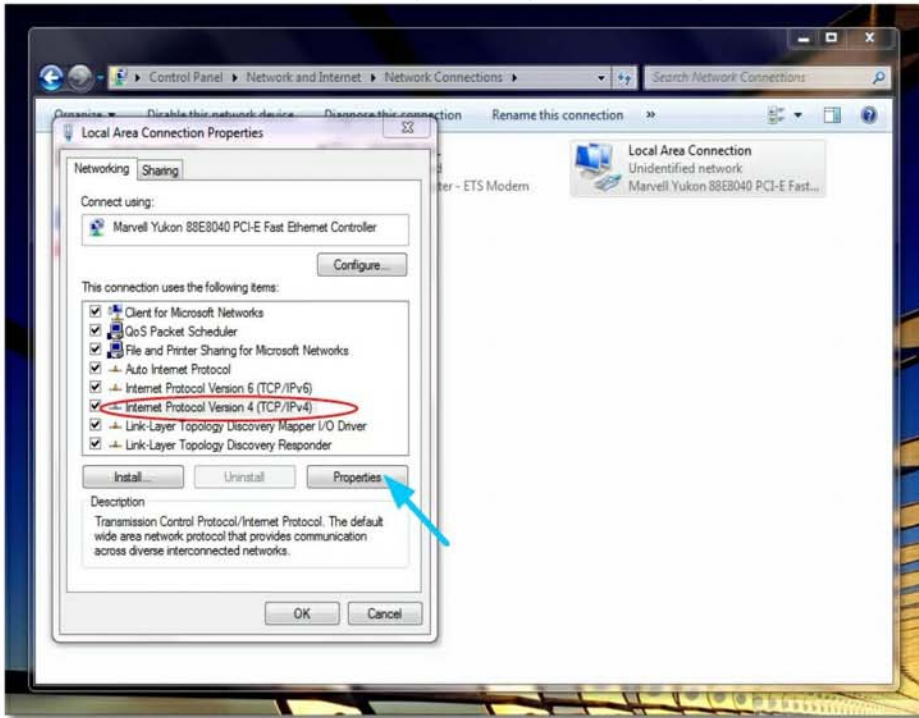
3. Click **Change adapter settings**



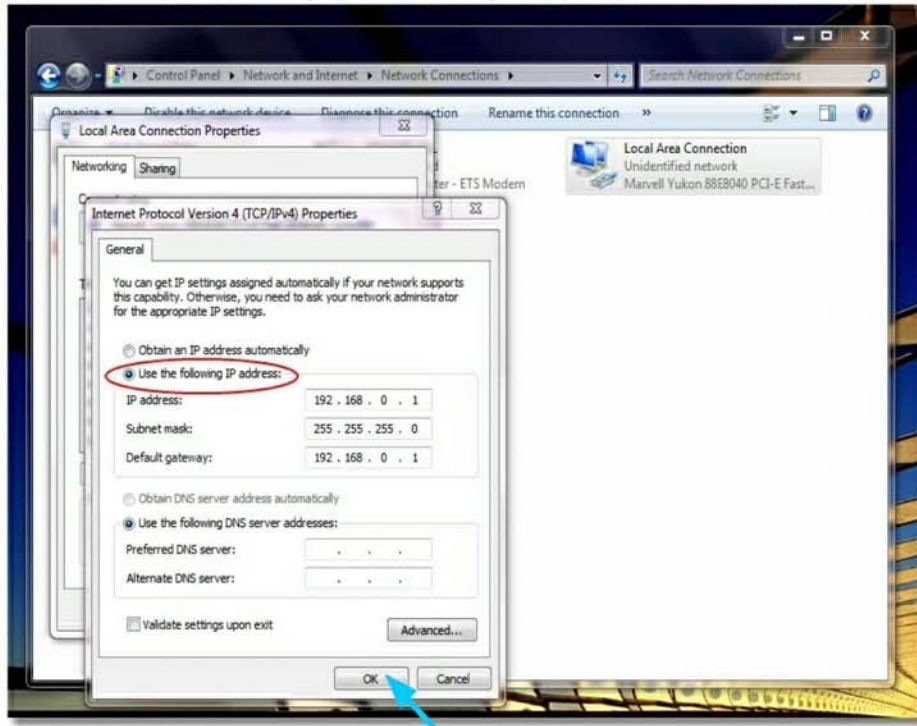
4. Right click **Local Area Connection** and on the drop down menu select **Properties**



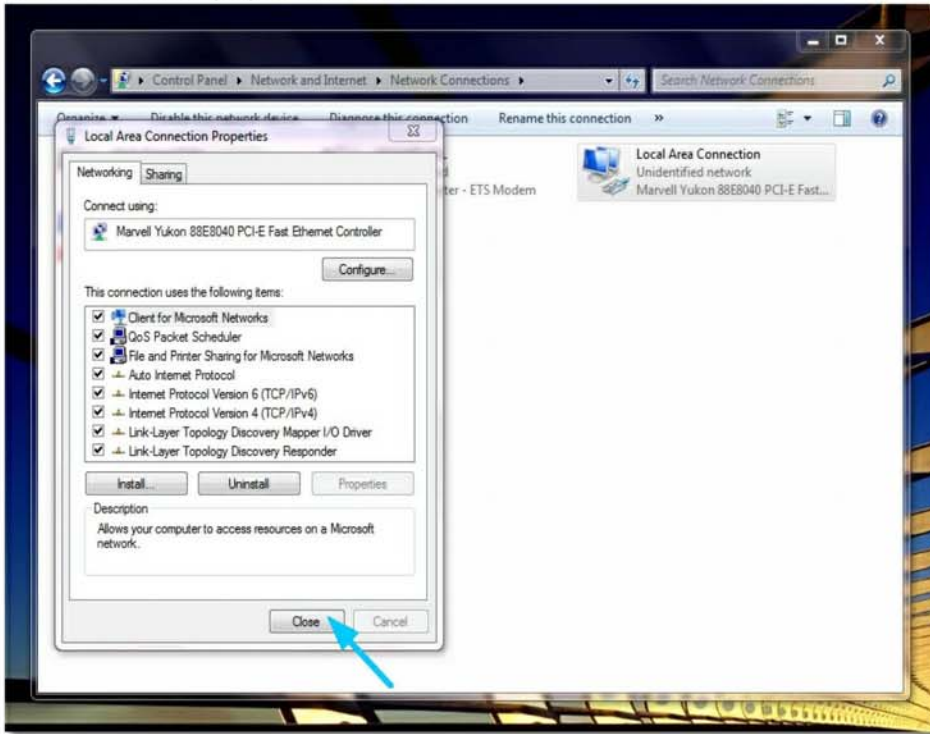
5. Select Internet Protocol Version 4(TCP/IPV4) and click **Properties**.



6. Select **Use the following IP address**, input the values shown and then click **OK**.



7. Close the already opened windows.



8. Power on TR4080 and when the clock display appears, follow the next steps.

9. Scan the Admin card and enter the main page.



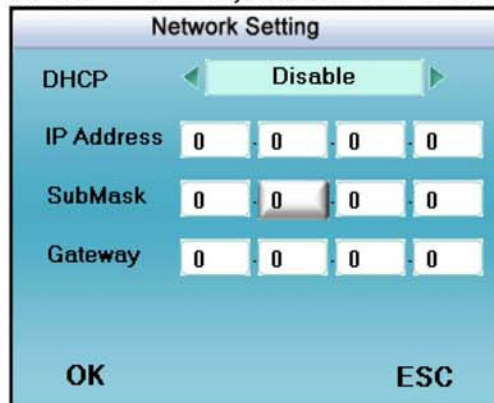
10. On the main page, select **Comm.** and click **OK**.



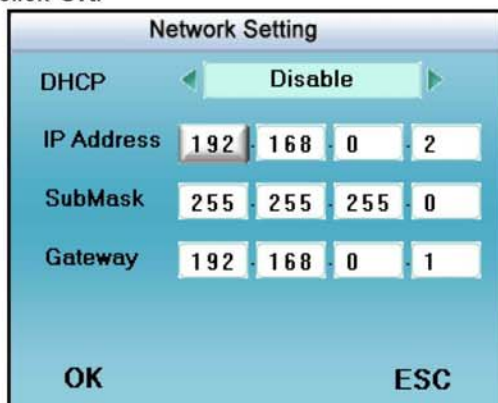
11. On the next page select **Network** and click **OK**.



12. Use **←** or **→** keys and set DHCP to **Disable**.



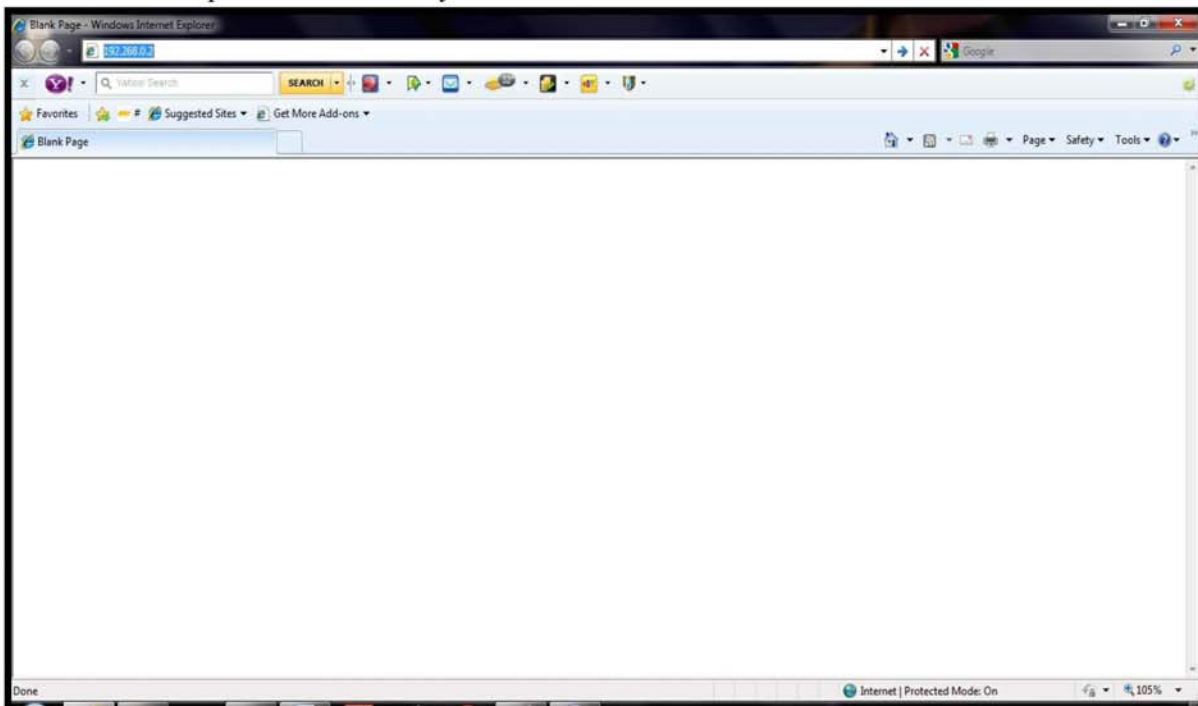
13. Enter the values shown as shown below and click **OK**.



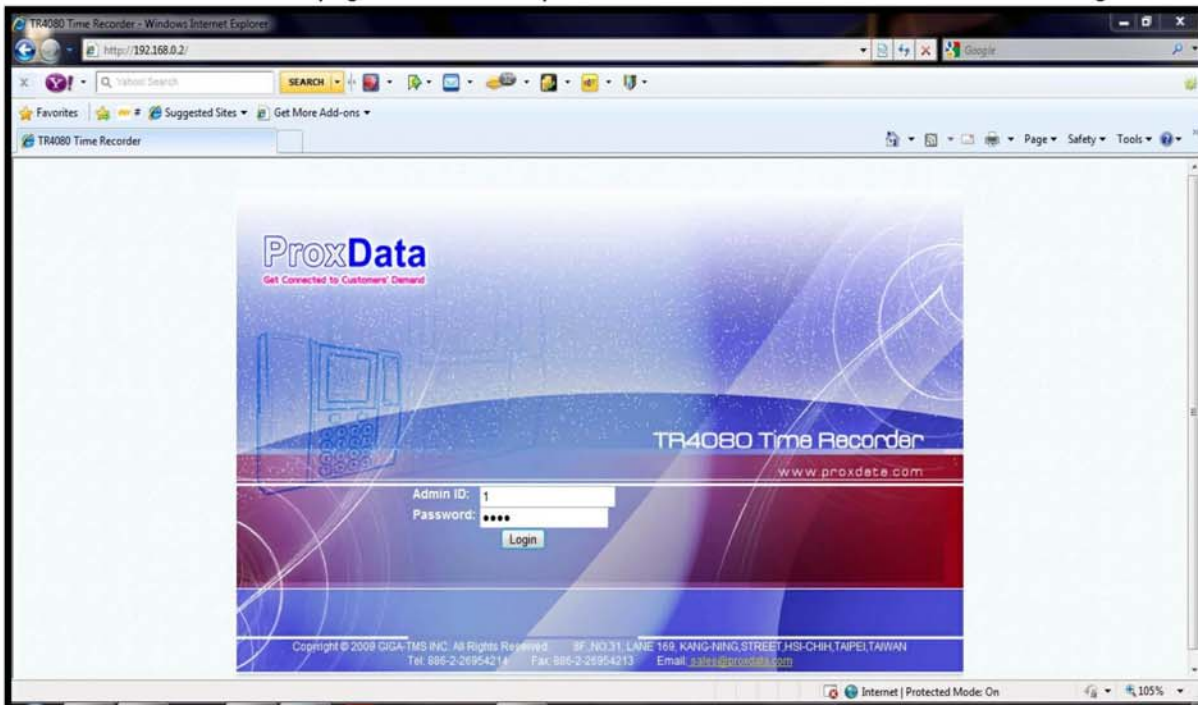
14. Keep clicking **ESC** to exit main page.



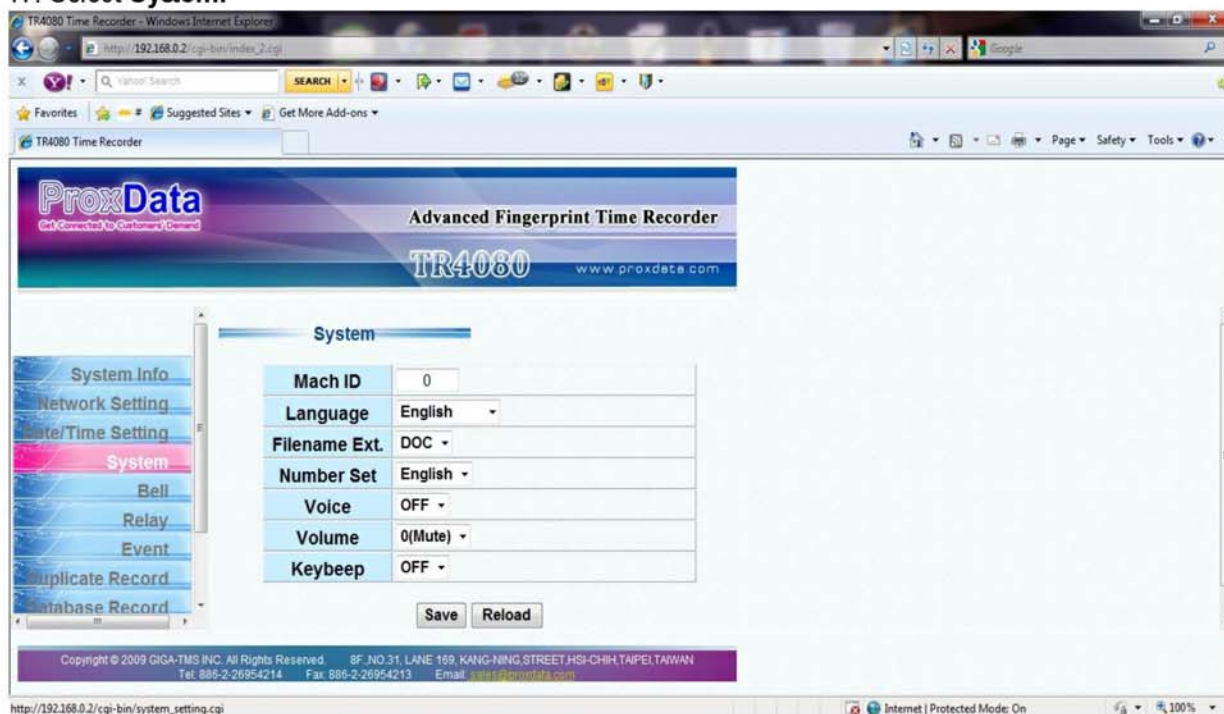
15. Open any web browser (Internet Explorer, Mozilla... etc) and type in the address bar the IP address: 192.168.0.2 and press **Enter** tab on your PC.



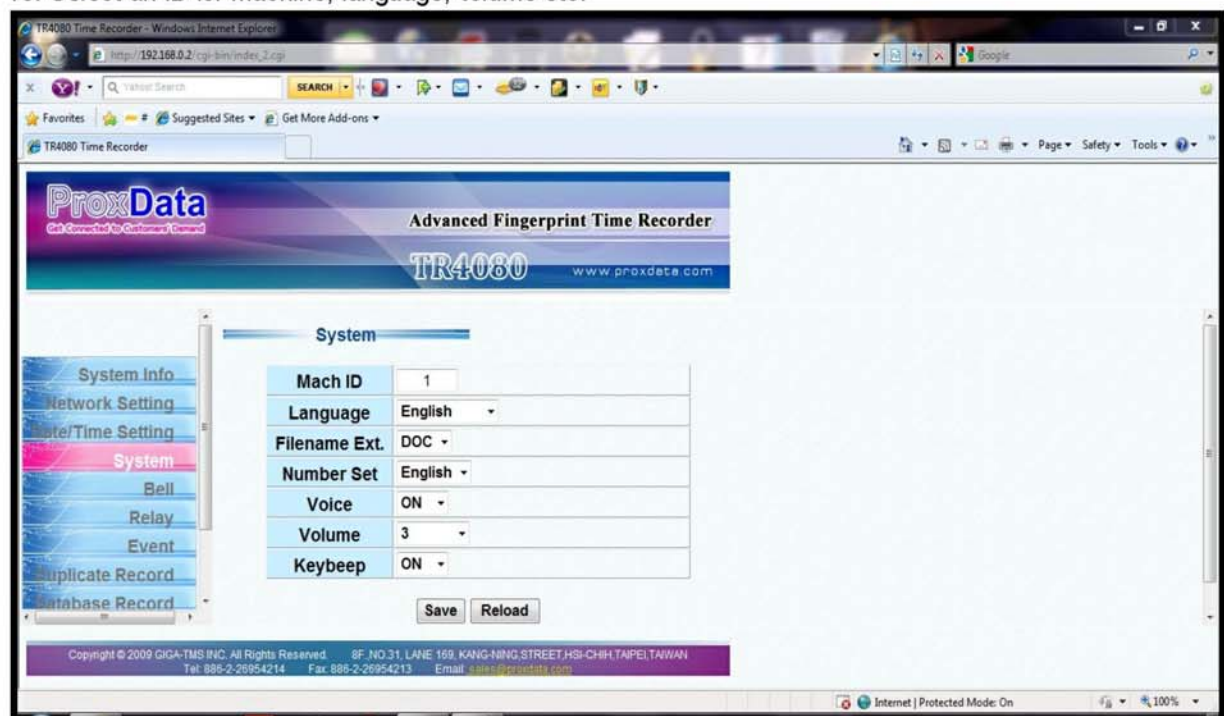
16. When the ProxData webpage of the device opens enter **Admin ID** and **Password** and click login.



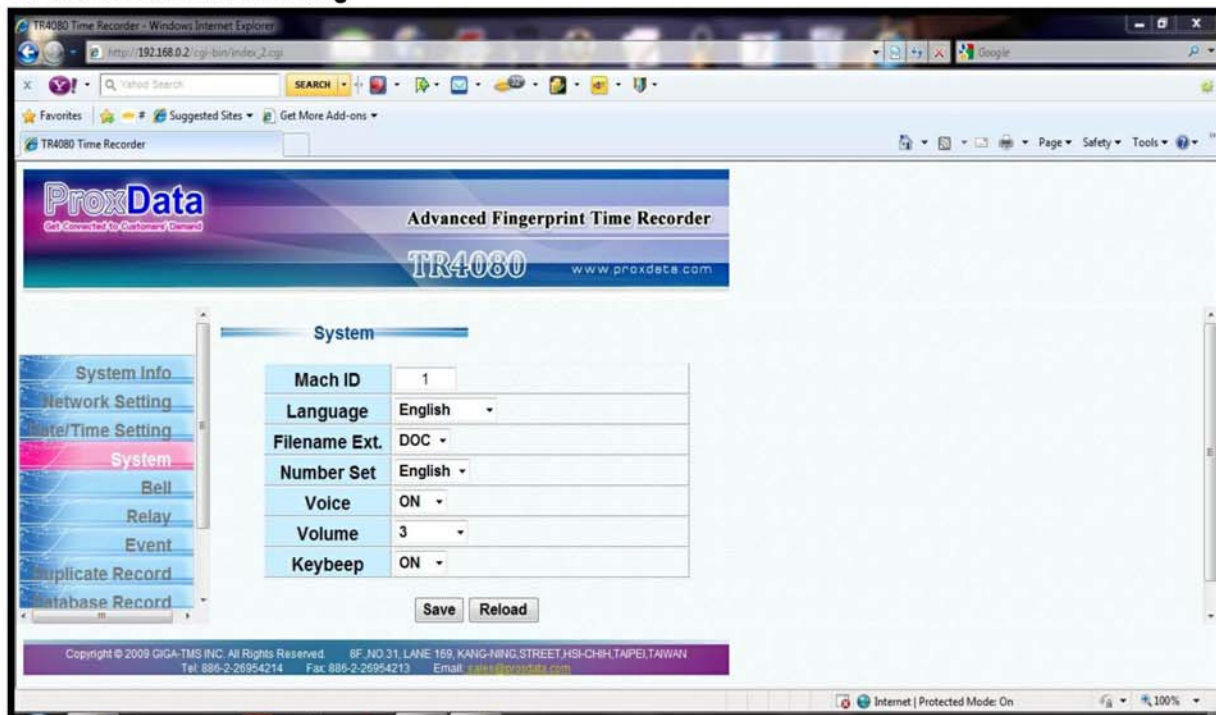
17. Select System.



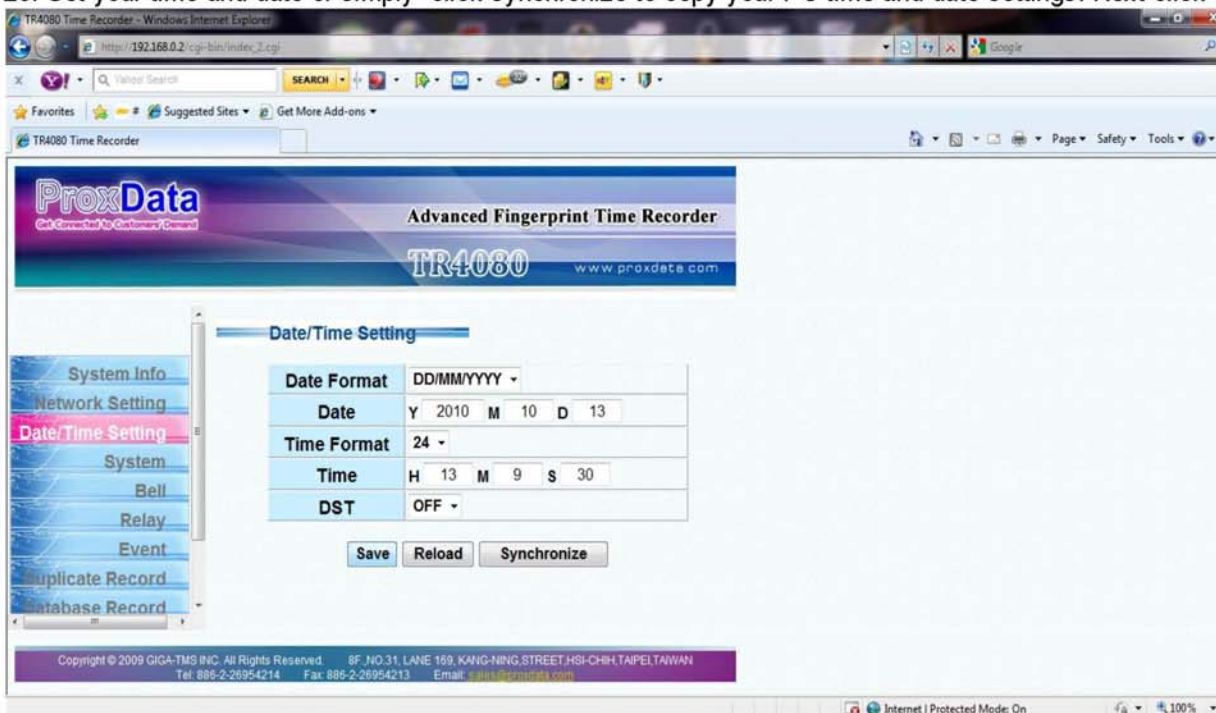
18. Select an ID for machine, language, volume etc.



19. Select Date/Time Setting



20. Set your time and date or simply click synchronize to copy your PC time and date settings. Next click **Save**.

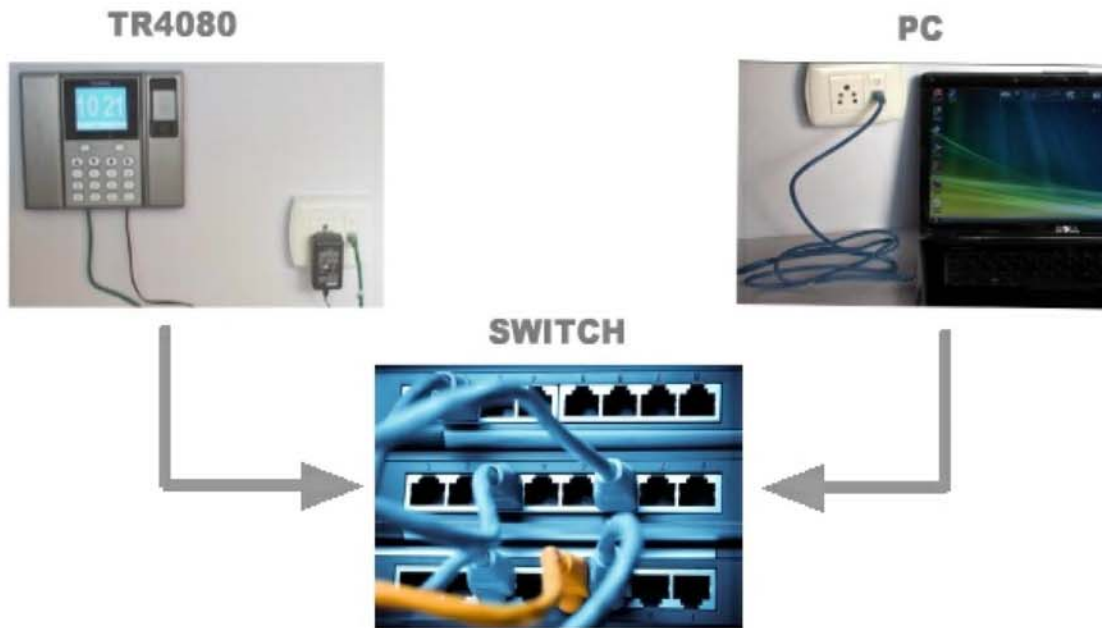


21. TR4080 display will change to the new time.



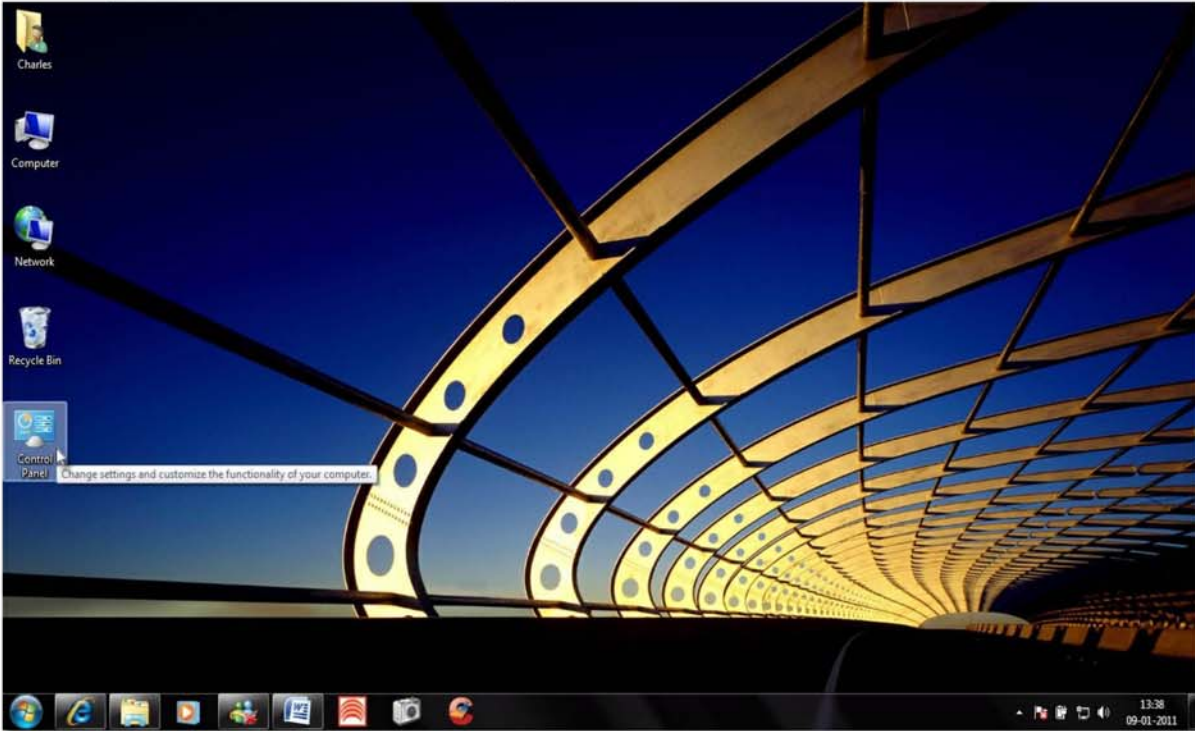
1.4.2.1.2 Ethernet Via Switch

TR4080 can be connected via Switch (hub)

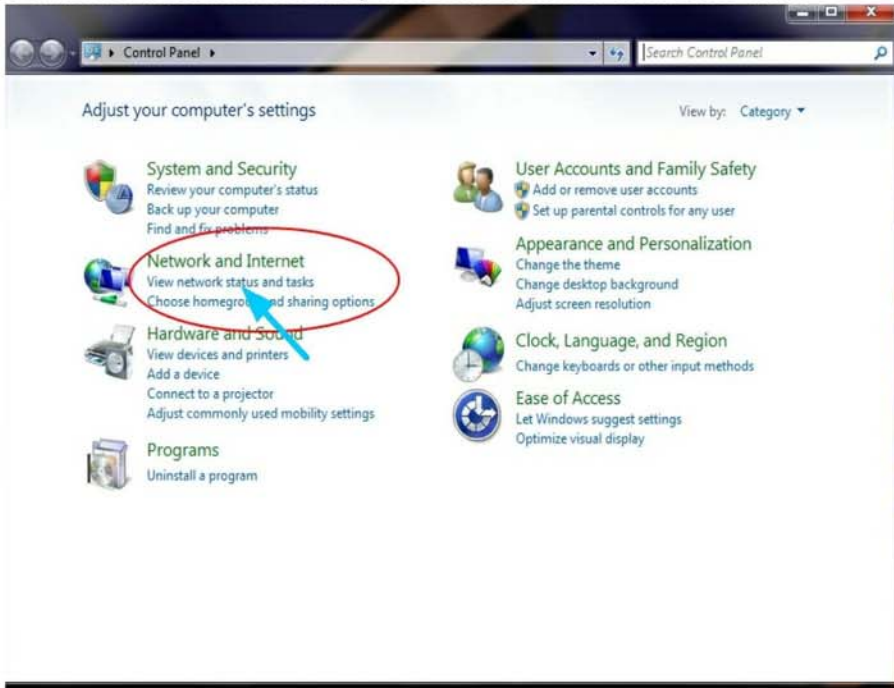


1.4.2.1.2.1 Ethernet Via Switch Configuration

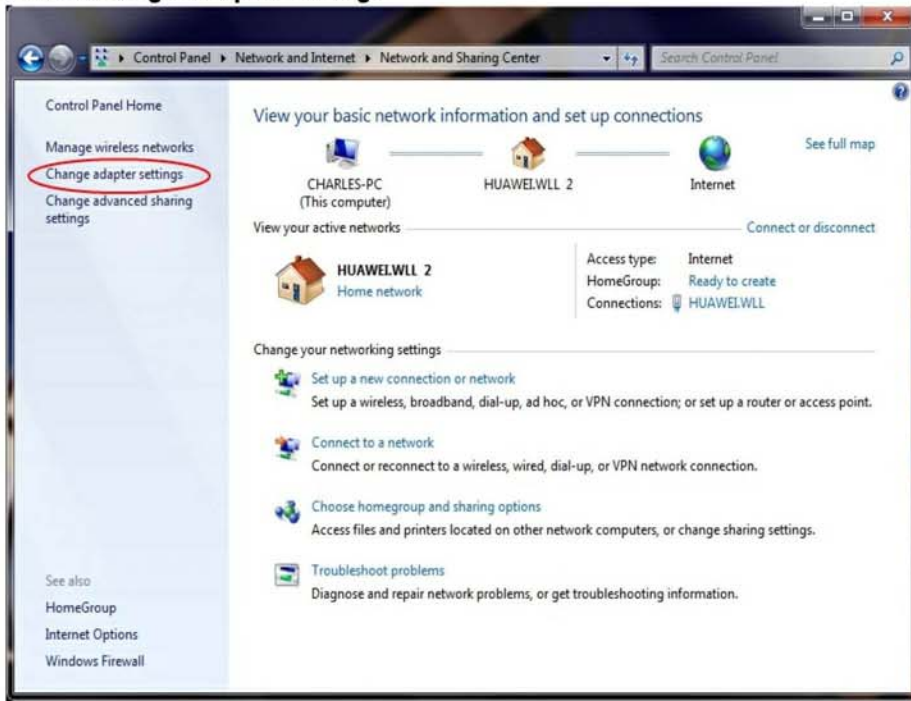
1. Click open **Start/Control Panel** or **Desktop/Control Panel**



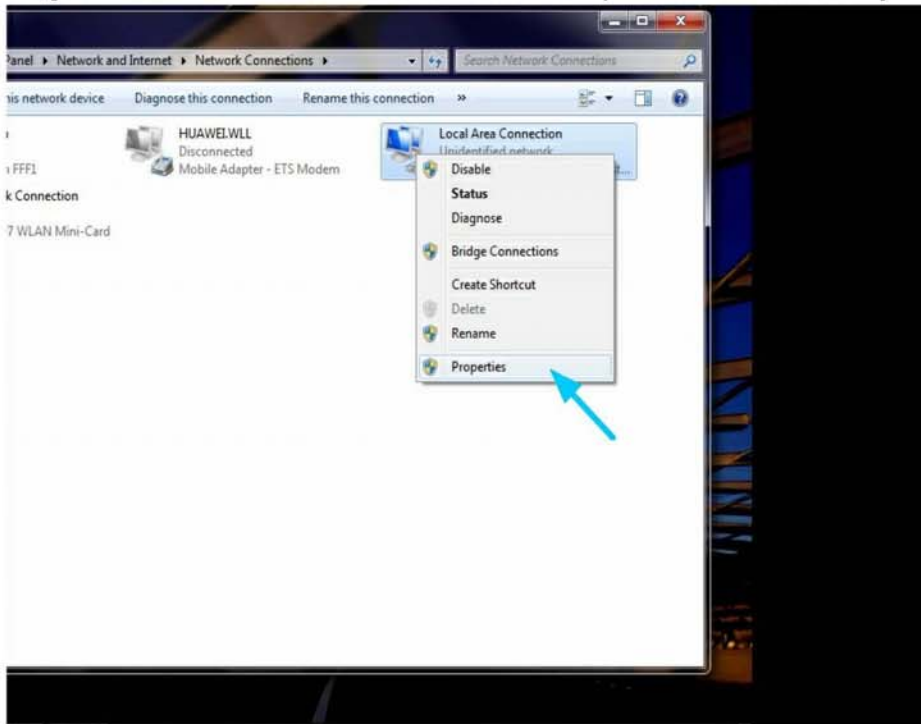
2. Under **Network and Internet**, click **View network status and tasks**



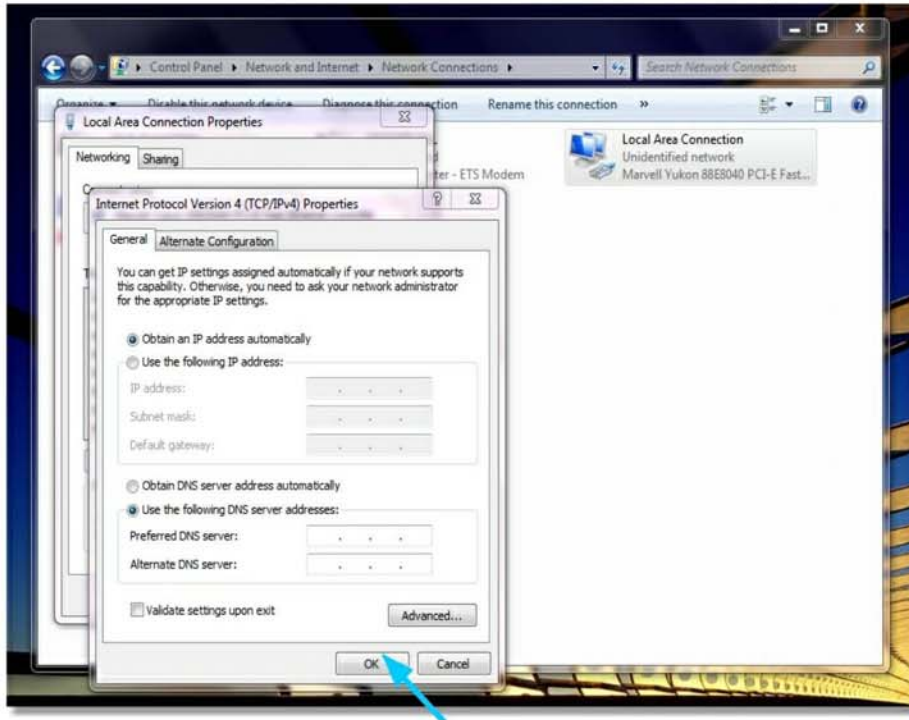
3. Click **Change adapter settings**



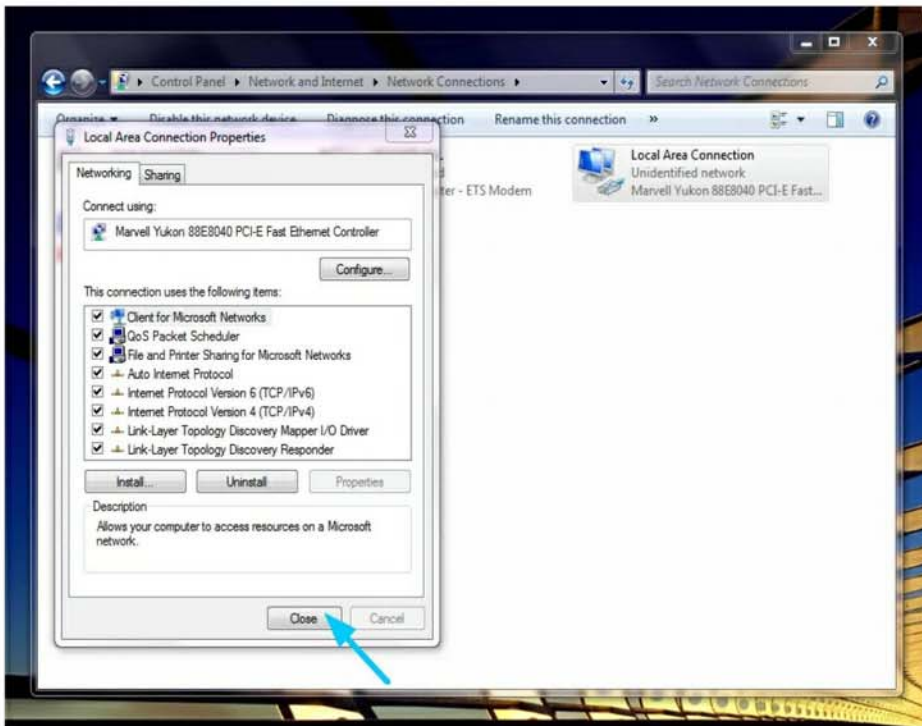
4. Right click **Local Area Connection** and on the drop down menu select **Properties**



5. Ensure that on the **General** tab **Obtain IP address automatically** is selected. Click **OK**.



6. Close the already opened windows.



7. Power on TR4080. When the clock display appears, do the following the steps:

8. Scan the Admin card and enter the main page.



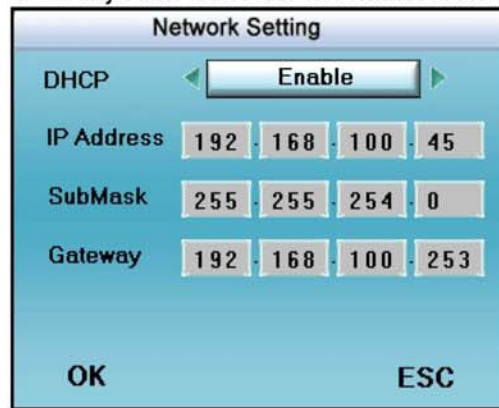
9. On the main page, select **Comm.** and click **OK**.



10. On the next page select **Network** and click **OK**.



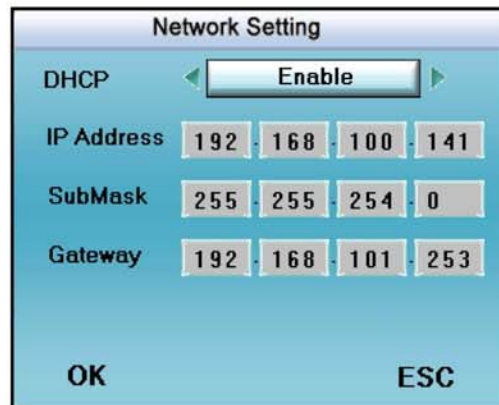
11. If **DHCP** is enabled, skip to step 7. If not Use **◀** or **▶** keys and set DHCP to **Enable** and click **OK**.



12. Click **OK** on the Network page and again enter **DHCP** page.



13. Note **IP Address** and then click **ESC**.



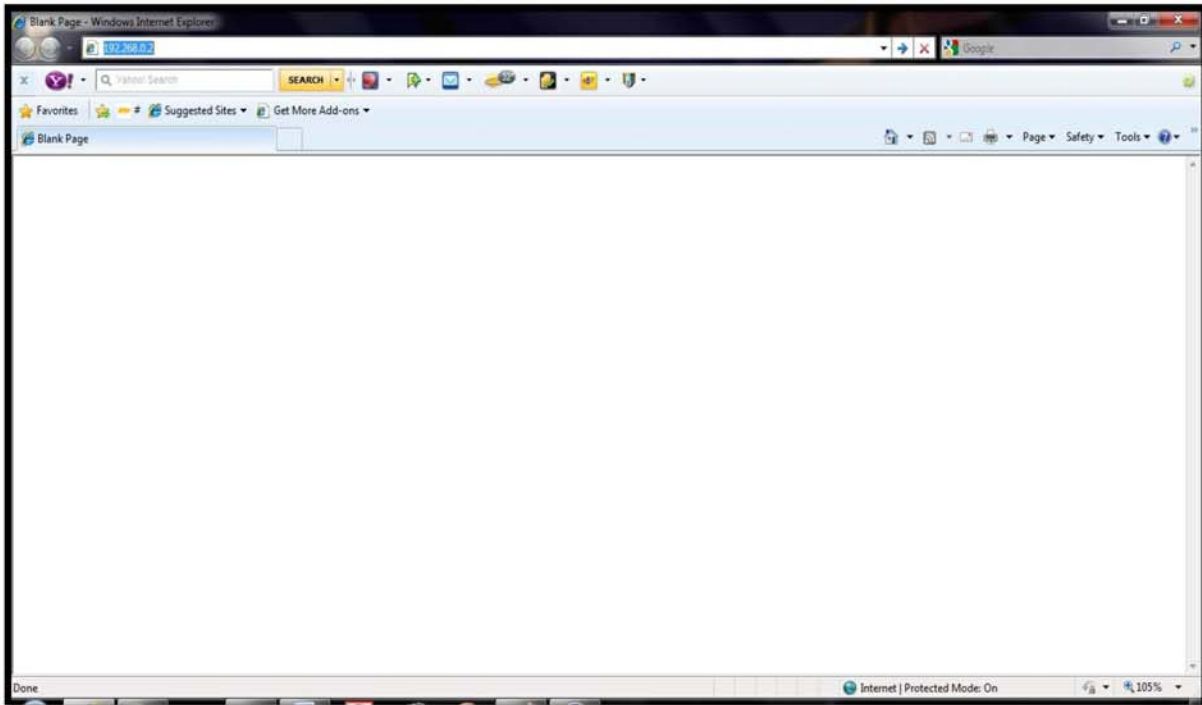
14. Click **ESC** again.



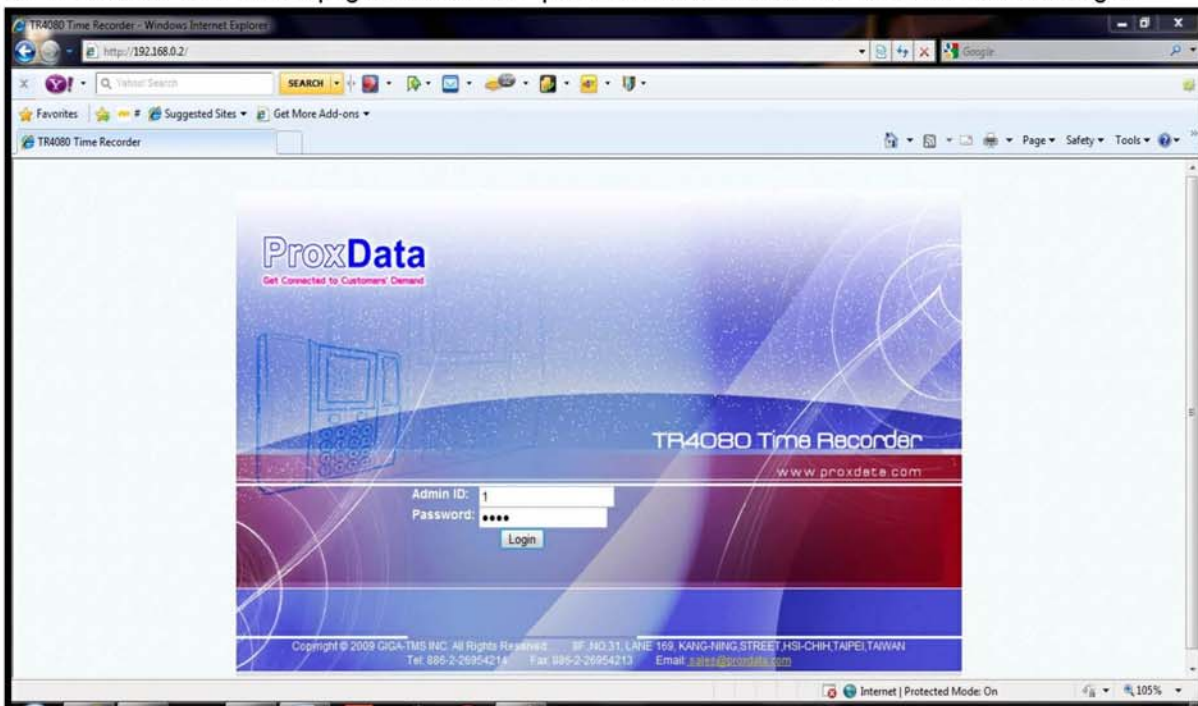
15. Click **ESC** again to exit.



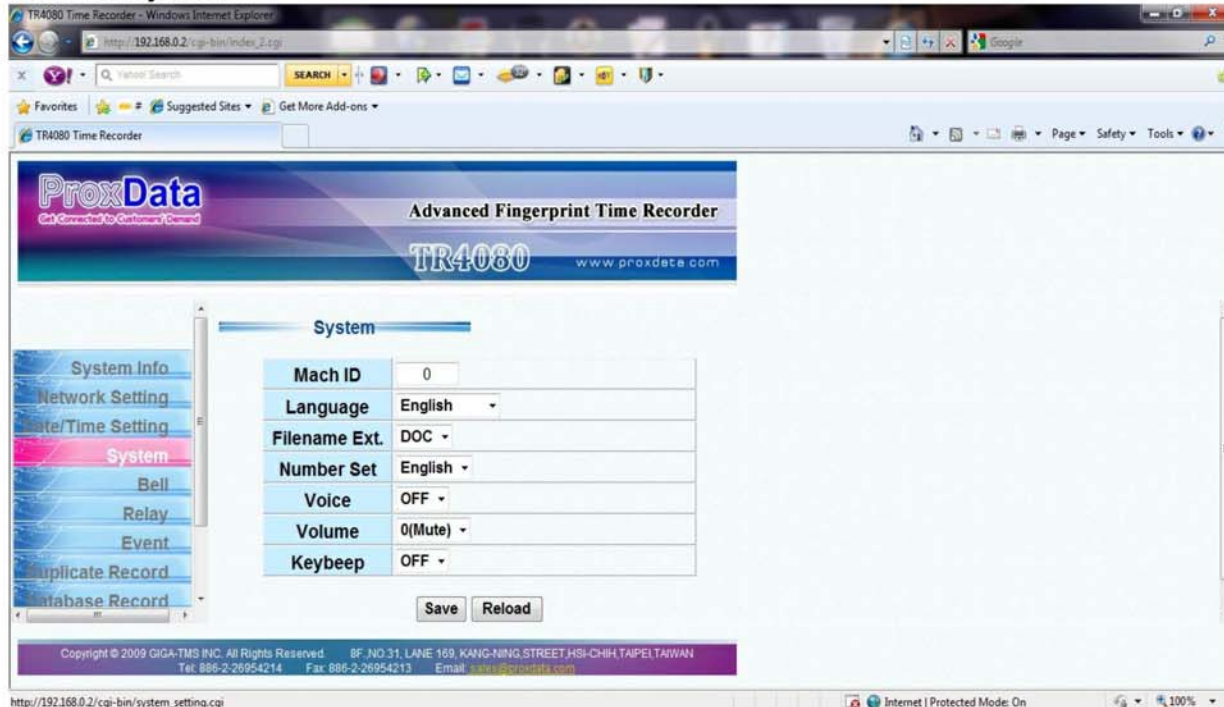
16. Open any web browser (Internet Explorer, Mozilla... etc) and type in the IP address: 192.168.100.141 and press the **Enter** tab on your PC.



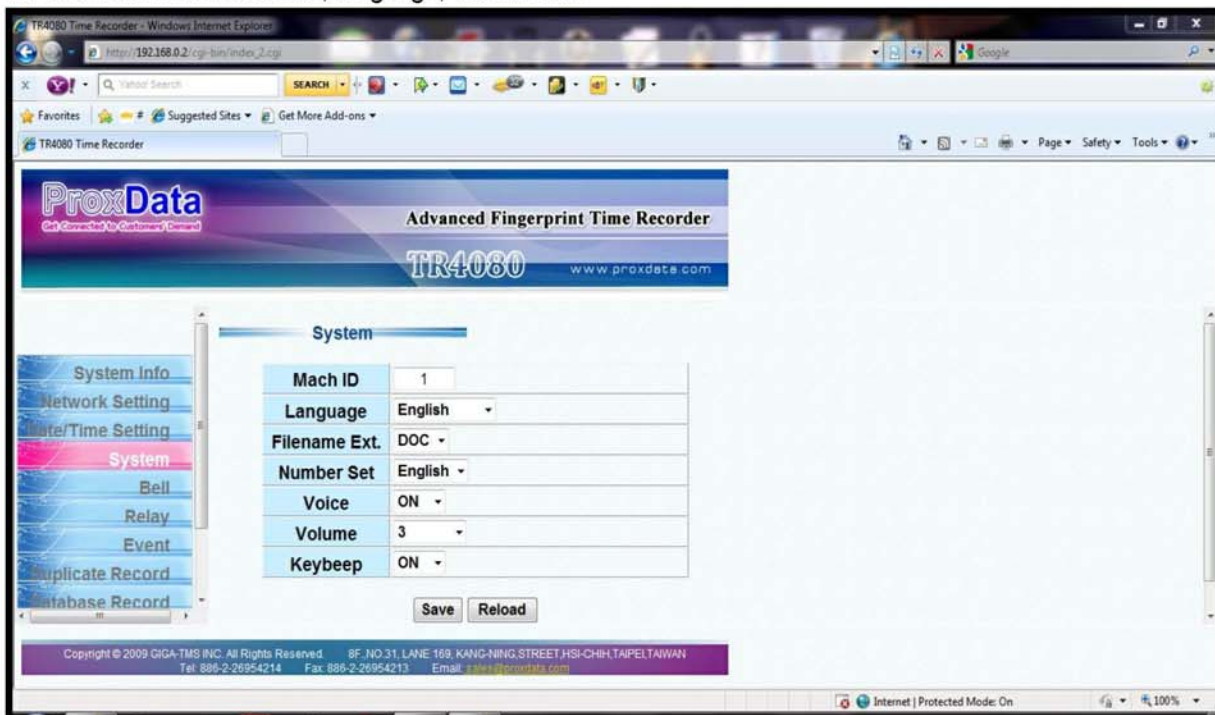
17. When the ProxData webpage of the device opens enter **Admin ID** and **Password** and click login.



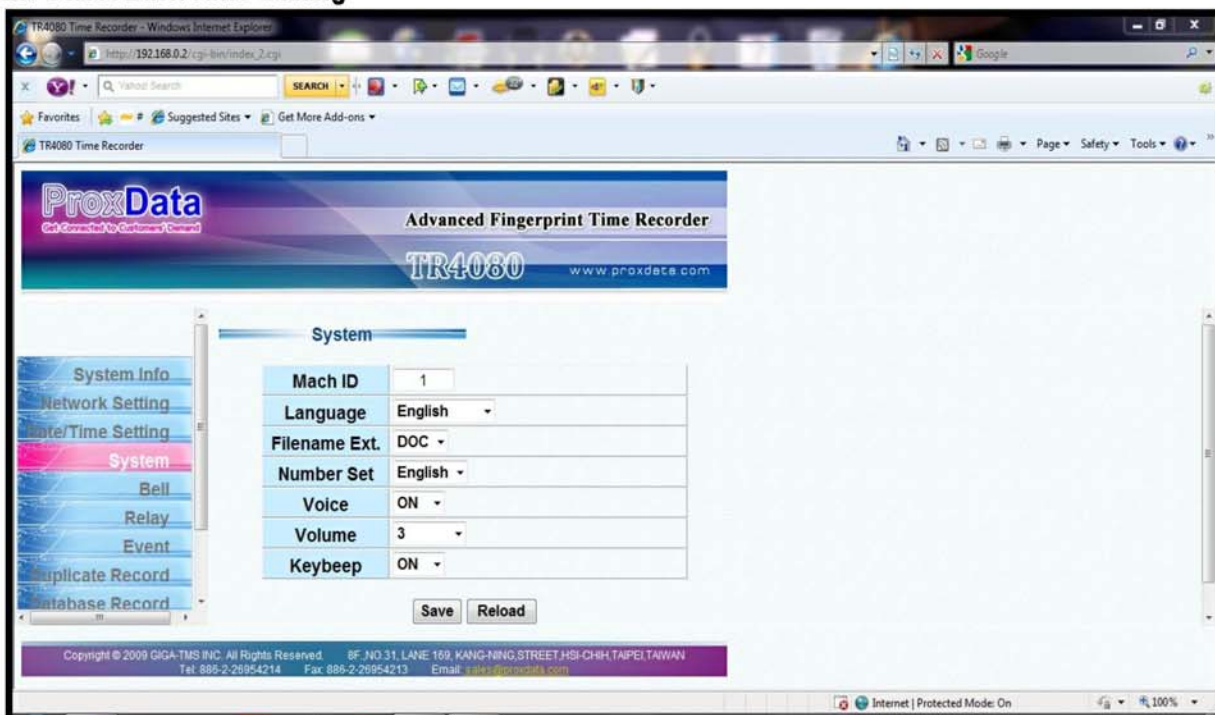
18. Select **System**.



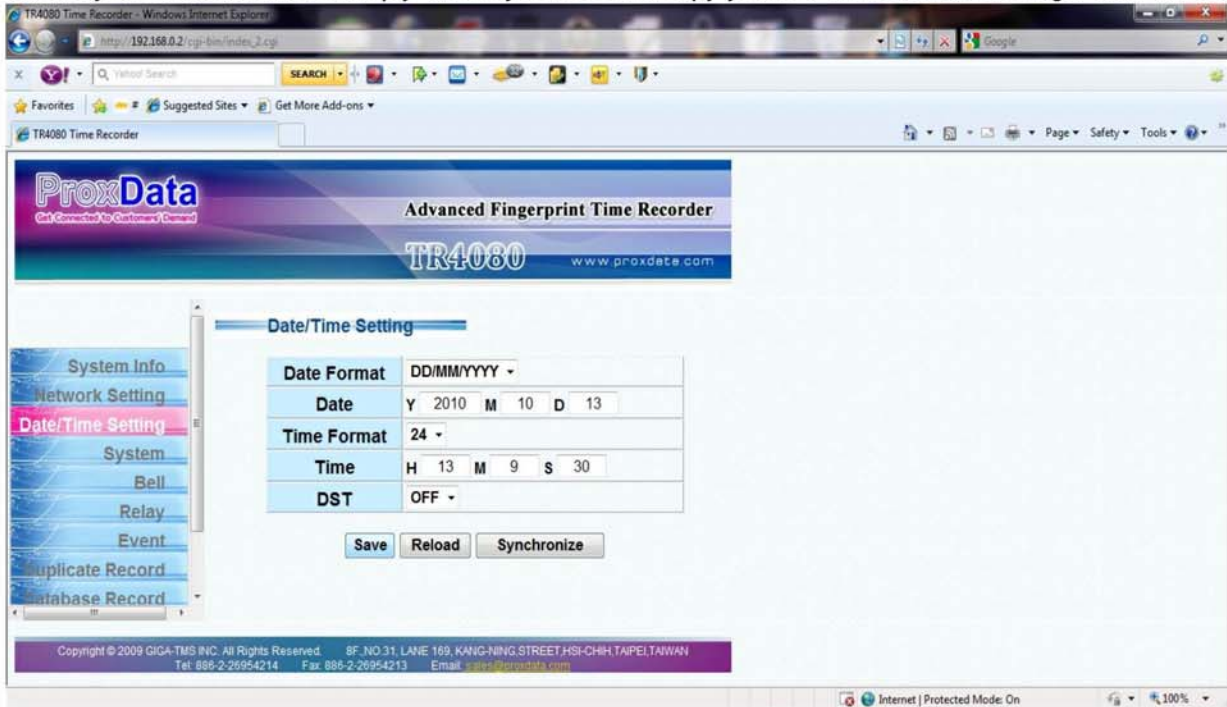
19. Select an ID for machine, language, volume etc.



20. Select Date/Time Setting



21. Set your time and date or simply click synchronize to copy your PC time and date settings. Next click **Save**.



22. TR4080 display will change to the new time.



Part



2 Operation

This section will describe how to register user fingerprints and operate other functions.

2.1 Admin Registration

This section describes steps to register:

1. Admin's ID and Password
2. Admin's Fingerprint
3. Admin's Card
4. Admin's Fingerprint + Card and
5. Verification of the above.

2.1.1 Admin ID and PW

The Administrator should have an ID number and password for online access of TR4080. The steps to have these are described in this section. Besides the PW, the Administrator can also have the following additional access options: Fingerprint, Card and Fingerprint + Card. They are described in the subsequent sections.

1. To set Administrator's ID number and Password, scan the Admin Card and enter main page. Select **User** icon and press **OK**.

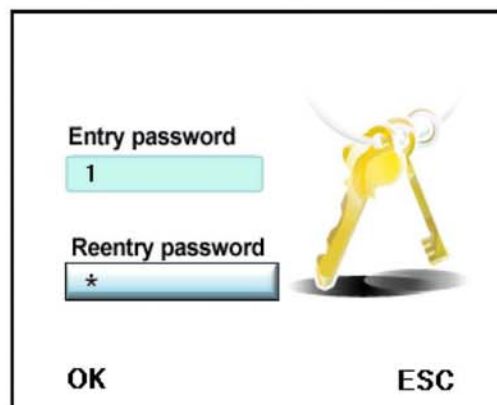
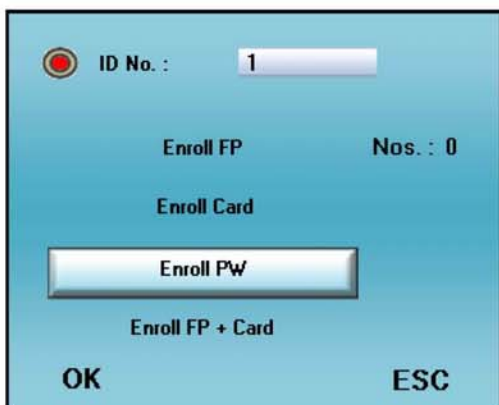


2. Using key **▶** select **Admin** icon and press **OK**.



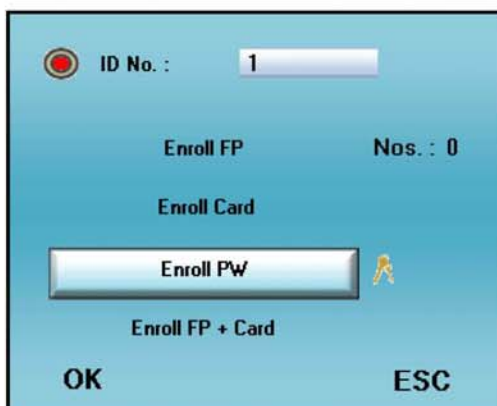
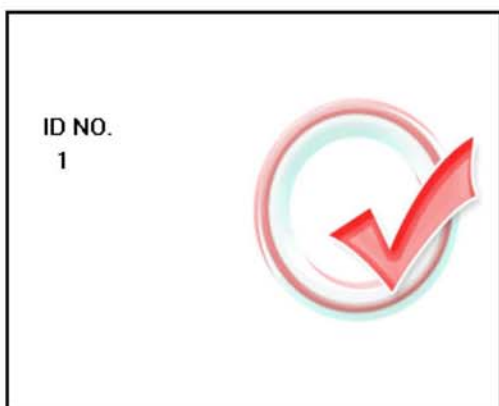
3. Enter ID number of your choice. Next using key **▼** select **Enroll PW** and press **OK**. If you enter an already registered ID number an error message as shown at the end of this section will be displayed.

4. Enter password of your choice. Press **OK**. Re-enter password and press **OK** again.



5. First, successful registering of ID will be confirmed by the appearance of a 'Right' mark.

6. Next, successful registering of password will be confirmed by the appearance of key bunch icon next to **Enroll PW** button. If you want to register FP, Card etc. under this same ID number you may follow from step 4 in the next section. Alternately you may press **ESC** to exit now and register them later but you have to then choose another ID number.



Error message if ID number was already taken/registered:



Note: If you have registered your FP or Card for a particular ID number then you cannot register FP+Card for the same ID.

You can of course register FP+Card with a new ID number.

2.1.2 Admin FP

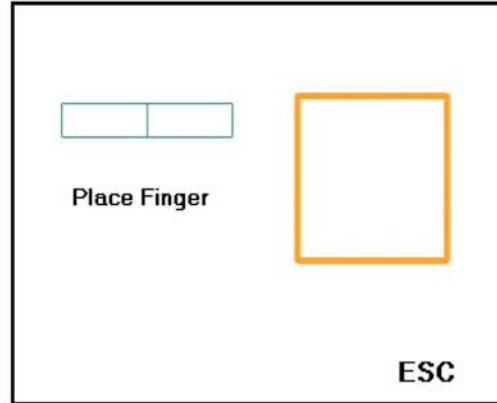
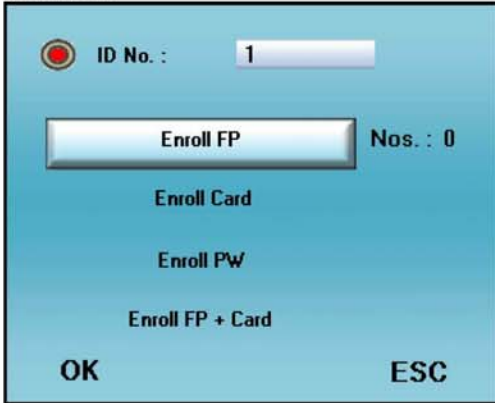
1. To register Administrator's fingerprint, scan the Admin Card (provided with the product package) and enter the main page. Select **User** icon and press **OK**.

2. On the next page, using key **▶** select **Admin** icon and press **OK**.



3. Enter Admin ID number. Using key **▼** select **Enroll FP** and then press **OK**. If you enter an already registered ID number an error message as shown at the end of this section will be displayed.

4. Fingerprint scan page will open.



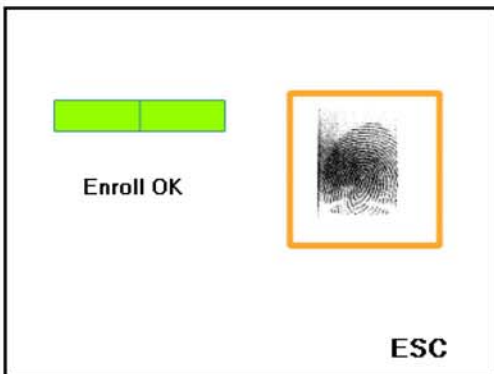
5. Place your finger on the fingerprint sensor.



6. Scan start will be indicated by a green progress bar.



7. Scanning complete.

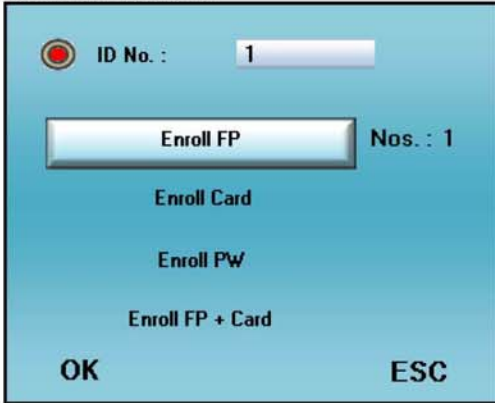


8. Red progress bar will appear if your fingerprint has already been registered. Try a different finger or delete the earlier fingerprint. To delete you should know the ID under which you had earlier registered it. Then you can delete it at **Edit** page and retry.



9. On successful registration the page will appear showing number 1 next to **Enroll FP** button. To register your other fingers repeat the steps from number 4 till 10. To register card for the same ID number follow from step 4 onward in the next section. Alternately you may press **ESC** to exit now and register the card later by choosing another ID number.

Error message if ID number was already taken/registered:



Error Enroll No.



2.1.3 Admin Card

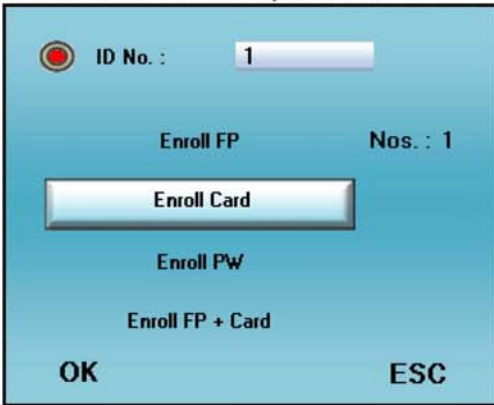
1. To register Administrator's Card, scan the Admin Card provided with the product package and enter the main page. Select **User** icon and press **OK**.



2. On the next page, using key **▶** select **Admin** icon and press **OK**.



Enter your Admin ID number. Next, using key **▼** select **Enroll Card** and press **OK**.



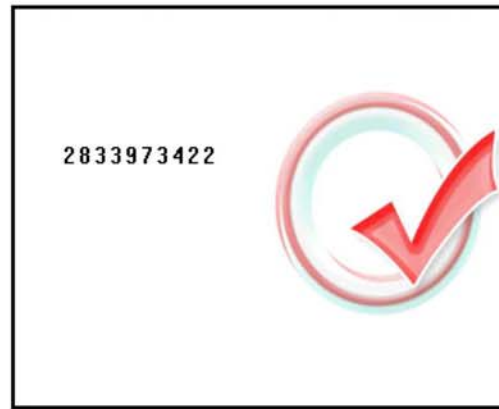
4. **Place Card** instruction will appear.



5. Take a blank user card provided with the product package and scan.



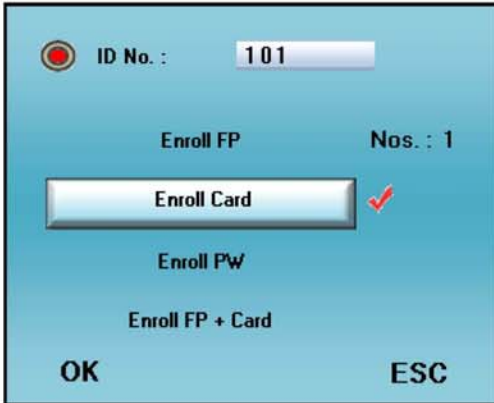
7. Card number and a 'Right' mark will be displayed.



8. The registration page will re-open and a 'Right' mark will also appear next to **Enroll Card** button

Error message, if ID number was already taken/ registered:

indicating successful registration. If you want to register **Enroll FP + Card**, enter a different ID number and then proceed from step 4 of the next section. Alternately you can quit now by pressing ESC and register it later as well with a different ID number.



Error Enroll No.

