



Main office/Factory : 67-1 Sukwu-ri, Dongtan-myeon, Hwasung-gun,
Kyunggi-Do, Korea

TEL : +82-31-377-1907

Service Center

ARS +82-31-377-1907

When you call service center, please leave your model name, trouble condition and contact information properly. Service center will contact you as soon as possible and answer your questions.



MAIN OFFICE CUSTOMER SUPPORT TEAM
TEL : +82-31-377-1907
ARS : +82-31-377-6294
FAX : +82-31-376-6297



WEBSITE
<http://www.gmstechnology.co.kr>
e-mail : magicwindow@gmstechnology.co.kr

TFT-LCD MONITOR

MagicWindow

User's Manual

MODEL : DT-15NT



MagicWindow

parts

Please make sure the following items are included with your monitor.
If any items are missing, contact your local dealer or gmstechnology service center.



AC Power Cord



AC/DC Power Adapter



TV Tuner



Remocon / Battery



LCD Monitor



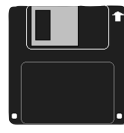
Sound Cable



User's Manual/Warranty Card



15-pin D-SUB Signal Cable



Installation Diskette

MagicWindow

Table of Contents

INSTALLATION

Safety Instructions	2
Connecting the Monitor	4
Monitor Driver Installation	
Auto Installation	6
Manual Installation	7

ADJUSTMENT

Front Panel	11
Easy Adjustment	12
Adjusting your LCD Monitor	13



APPENDIX

Remote Controller	17
Product Features	18
Troubleshooting	19
Safety Precautions	22
Specifications	23
Display Modes	24
Standard Certification Logos	25
Warranty Card	27

Safety Instructions

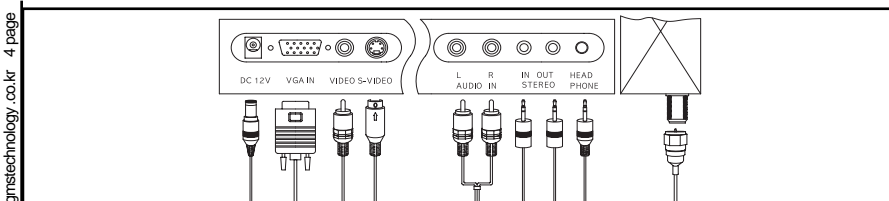
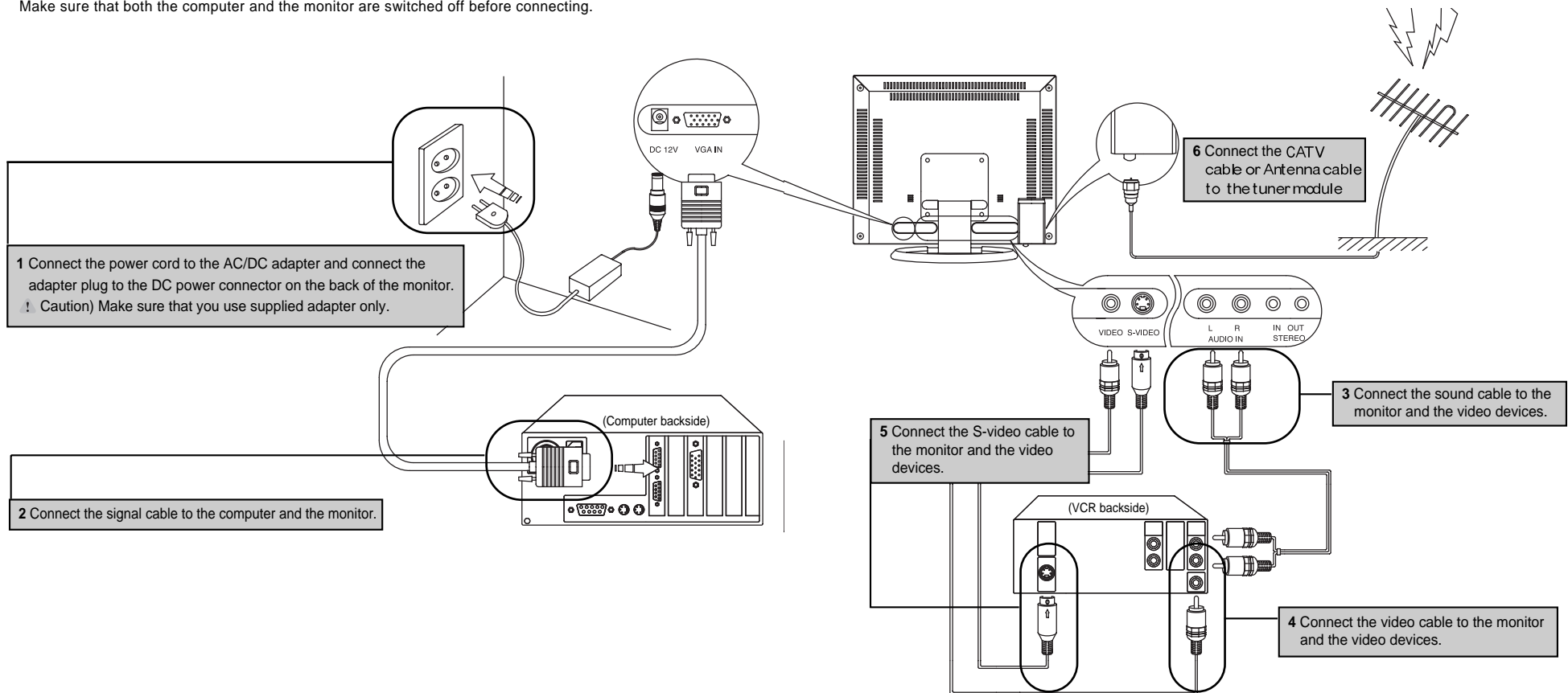
- 1 Before connecting the AC power cord to the DC adapter outlet, make sure the voltage designation of the DC adapter corresponds to the local electrical supply.
- 2 Never insert anything metallic into the cabinet openings of the liquid crystal display (LCD) monitor; doing so may create the danger of electric shock.
- 3 To avoid electric shock, never touch the inside of the LCD monitor. Only a qualified technician should open the case of the LCD monitor.
- 4 Never use your LCD monitor if the power cord has been damaged. Do not allow anything to rest on the power cord, and keep the cord away from areas where people can trip over it.
- 5 Be sure to hold the plug, not the cord, when disconnecting the LCD monitor from an electric socket.
- 6 Openings in the LCD monitor cabinet are provided for ventilation. To prevent overheating, these openings should not be blocked or covered. Also, avoid using the LCD monitor on a bed, sofa, rug, or other soft surface. Doing so may block the ventilation openings in the bottom of the cabinet. If you put the LCD monitor in a bookcase or some other enclosed space, be sure to provide adequate ventilation.
- 7 Put your LCD monitor in a location with low humidity and a minimum of dust.
- 8 Do not expose the LCD monitor to rain or use it near water (in kitchens, near swimming pools, etc.). If the LCD monitor accidentally gets wet, unplug it and contact an authorized dealer immediately. You can clean the LCD monitor with a damp cloth when necessary, but be sure to unplug the LCD monitor first.
- 9 Place the LCD monitor on a solid surface and treat it carefully. The screen is made of thin glass with a plastic front surface and can be damaged if dropped, hit or scratched. Do not clean the front panel with keton-type materials (e.g., acetone), ethyl alcohol, toluene, ethylacid, methyl, or chloride. These may damage the panel.
- 10 Locate your LCD monitor near an easily accessible AC outlet.
- 11 If your LCD monitor does not operate normally -in particular, if there are any unusual sounds or smells coming from it -unplug it immediately and contact an authorized dealer or service center.

- 1 2 High temperature can cause problems. Don't use your LCD monitor in direct sunlight, and keep it away from heaters, stoves, fireplaces, and other sources of heat.
- 1 3 Unplug the LCD monitor when it is going to be left unused for an extended period of time.
- 1 4 Unplug your LCD monitor from the AC outlet before any service.

	CAUTION RISK OF ELECTRIC SHOCK DO NOT OPEN	
CAUTION: TO REDUCE THE RISK OF ELECTRIC SHOCK, DO NOT REMOVE COVER (OR BACK). NO USER-SERVICEABLE PARTS INSIDE. REFER SERVICING TO QUALIFIED SERVICE PERSONNEL.		

CONNECTING THE MONITOR

Make sure that both the computer and the monitor are switched off before connecting.



MONITOR DRIVER INSTALLATION

If you install the monitor driver, the resolution and frequency are suitable for the monitor and you can experience the clear screen.

▶ Auto Installation

If the installation does not work automatically, install the driver manually

First, turn the computer and the monitor on and insert the installation disk into the floppy disk drive. Double click on "install.exe" and follow the steps below.

1 Choose a model and click "OK"

2 Click "OK"

3 Click "OK"

4 If the screen performs normally after appearing the monitor optimization mode, click "Yes". Otherwise, click "No"

• If you do not want the monitor optimization function, click "Cancel"

5 Adjust the resolution and vertical frequency and then click "OK"

• This screen shot is for the mode reset.

6 Click "OK"

7 Click "Yes"

• If you want to change the resolution, click "No". Repeat the above steps and set the optimal resolution.

▶ Manual Installation

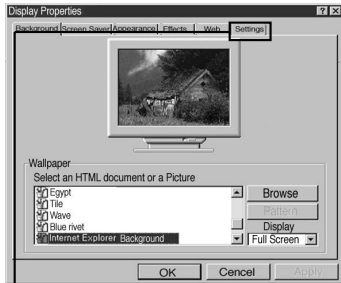
First, turn the computer and the monitor on and insert the installation disk into the floppy disk drive. Click "Control panel" and then follow the steps given below.

1 Click "Control panel"

2 Click "Display"

• Or click the right button on the mouse and then click "Properties"

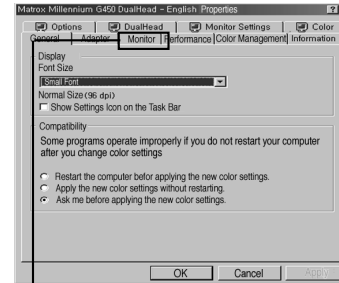
▶ Manual Installation



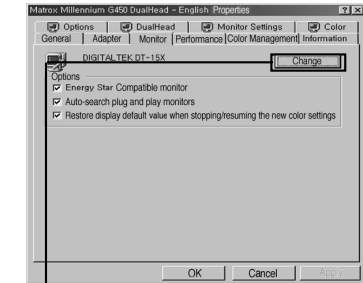
3 Click "Settings"



4 Click "Advanced"



5 Click "Monitor"



6 Click "Change.."

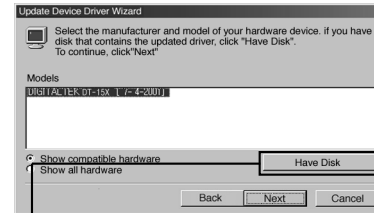


7 Click "Next"



8 Click "Display a list of all the drivers in a specific location, so you can select the driver you want"

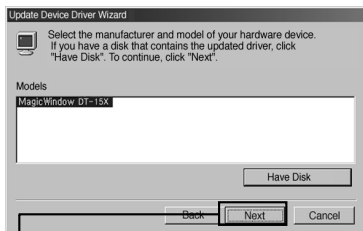
9 Click "Next"



10 Click "Have Disk"



11 Select the driver and click 'OK'.



12 Select model and click "Next"



13 Click "Next"



14 Click "Finish" and then reboot the Windows.

⊙ Driver installation has been completed.

▶ **Manual Installation**

IF YOU HAVE WINDOWS NT . .

- ❶ Click "Start" button.
- ❷ Select "Settings" tab and then click "Control Panel".
- ❸ Double click "Display" icon.
- ❹ Click "Settings" bar.
- ❺ Click "All display modes".
- ❻ Select a mode (resolution, colors, vertical frequency).
- ❼ Click "OK".
- ❽ Click "Test"
- ❾ If the screen performs normally, click "Yes". Otherwise, select other mode (lower resolution, colors and vertical frequency).

※ **Note:** If "All display modes" does not exist on your Widows NT, refer to Standard Signal Modes in this manual and select a resolution and vertical frequency.

IF YOU HAVE LINUX . .

To command X-Window, you have to create a system file that called XF86Config file. You can set your monitor with the file. If you command XF86Config, the file can be created.

- ❶ Command XF86Config and then press enter key when the first and second screen appear.
- ❷ In the third screen, you can find mouse settings.
- ❸ Select your mouse.
- ❹ Next, Keyboard setting screen appears.
- ❺ Select your keyboard.
- ❻ Monitor setting screen appears.
- ❼ First, you have to set the horizontal frequency. Refer to Horizontal Frequency in this manual and select one of them. (You can input the frequency directly as well).
- ❽ You have to set the vertical frequency. Refer to Vertical Frequency in this manual and select one of them. (You can input the frequency directly as well)
- ❾ Enter the model name of your monitor.
Monitor information you entered here is not directly related to commanding X-Window.
- ❿ Monitor setting has been completed.
- ⓫ Complete other hardware settings and command X-Window.

FRONT PANEL

If you perform auto adjustment in advance of manual adjustment when you install the monitor, the screen appears more stable.

▶ **Basic functions of the buttons**

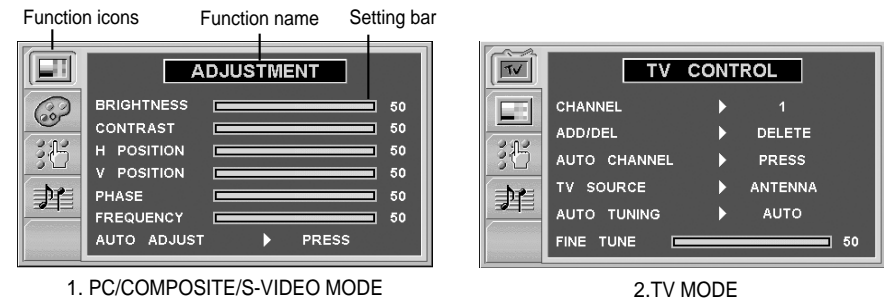
	Power ▶ Turns ON/OFF the monitor.
	Menu ▶ Opens the main OSD menu, and exits from main menu or sub-menu.
	Select ▶ Selects the highlighted function.
	Right ▶ Moves the selector right on the OSD or increases the values of the selected function.
	Left ▶ Moves the selector left on the OSD or decreases the values of the selected function.
	Up ▶ Moves the selector up on the OSD.
	Down ▶ Moves the selector down on the OSD.

Easy Adjustment (Hot Key)

KEY	PC MODE	COMPOSITE MODE	S-VIDEO MODE	TV MODE
1. SELECT	Performs the mode selection function (PC/COMPOSITE/S-VIDEO/TV) or if you keep in pressing this button, performs auto screen adjustment function.			
2. RIGHT	Displays brightness adjustment menu			Increases Channel
3. LEFT	Displays contrast adjustment menu			Decreases Channel
4. UP	Performs sound mute on / off			
5. DOWN	Displays audio volume adjustment menu			

Adjusting Your LCD Monitor

► ON-Screen Display(OSD)



1. PC/COMPOSITE/S-VIDEO MODE

2. TV MODE

On-Screen Display(OSD)

Accessing the menu system

- 1 With the OSD off, push the **Menu** button to display the main OSD menu.
- 2 Use the "▲▼" buttons to move from one function to another. As you move from one icon to another, the function name changes to reflect the function or group of functions represented by that icon. See Table 1 starting on the next page to view a complete list of all of the functions available for the monitor.
- 3 Press the **Select** button once to activate the highlighted function, use the "▲▼" buttons to select the function.
- 4 After selecting a function, use the "▶" and "◀" buttons to make necessary adjustments. The setting bar moves and the numeric value indicator changes to reflect your adjustments.

NOTE: The numeric value indicator is provided as a point of reference only and has nothing to do with a real measurement.
- 5 Push the **Menu** button a couple of times to return to the main menu to select another function or to exit from the OSD.

Adjusting Your LCD Monitor

Adjusting Your LCD Monitor

OSD functions and adjustment

Table 1. Screen controls






Icon	Menus and Sub-menus	Function Descriptions
	Adjustment	Adjustment is used to fine tune and get the best image by removing noises that creates unstable images with jitters and shimmers.
	Brightness	Adjust the brightness of video or TV without affecting PC RGB's brightness.
	Contrast	Adjust the contrast of video or TV without affecting PC RGB's contrast.
	H Position	Adjust the horizontal position of the image.
	V Position	Adjust the vertical position of the image.
	Phase	Remove the noises. When phase value is wrong, the image has vertical lines especially in 1 dot on and off.
	Frequency	Remove the noises. When frequency value is wrong, the image has horizontal lines especially in 1 dot on and off.
	Auto Adjust	"Auto adjustment" allows the monitor to self-adjust to the incoming video signal. The values of phase, frequency and position are adjusted automatically.
	Color	The tone of color can be changed from redish white to bluish white. The individual color components are also user customizable.
	6500° K	Redish white.
	7300° K	Plain white.
	9300° K	Bluish white.
	User	User customizable.
	Setup	Setup is used to adjust OSD menu information
	OSD H pos	Move the OSD Window to the horizontal direction.
	OSD V pos	Move the OSD Window to the vertical direction.
	Language	English, German, France, Italian, Spanish.
	Transparency	Change the opaqueness of the background of the OSD.
	Scaling	Changes the image size in several different ways.
	Information	Display current display mode.
	Menus and Sub-menus	The number of seconds that the OSD will remain visible before disappearing.


Table 1. Screen controls (Continued)

Icon	Menus and Sub-menus	Function Descriptions
	Audio Control	The monitor has a built-in high fidelity stereo audio amplifier. The audio circuit processes audio signal from various external input sources such as DVD, VCR, TV or PC.
	Source	Selects a sound source from PC, DVD, VCR or TV.
	Volume	Adjust the sound volume
	Bass	Emphasize low frequency audio.
	Treble	Emphasize high frequency audio.
	Mute	Mutes the sound temporarily. Mute is released when you adjust volume.
	Sound	Stereo : Process stereo sound if available. Mono : Process sound as mono. For stereo sound left and right channels are merged to be processed as mono. Bilingual : Select the language you want to hear.
	TV Control	The channel system can be set in several different ways.
	Channel	Changes the incoming channel.
	Add/Del	In rare cases, "Channel auto program" may miss a couple of channels due to weak signals or for other reasons such as a channel does not exist when "Channel auto program" is executed. To add a newly found channel or remove a channel, please follow the steps described below. Push Menu button and then select "Add/Del" under "TV Control" menu. Select "Add" to add the channel or select "Del" to remove the channel.
	Auto Channel	Search the channel
	TV Source	Antenna/Cable
	Auto Tuning	Select Tuning ways - Auto or Manual.
Fine Tune		Due to weak signals or a wrong antenna configuration, some of the channels may not be tuned correctly. Select "Fine Tune" under TV Control menu to make the video image as clear as possible.

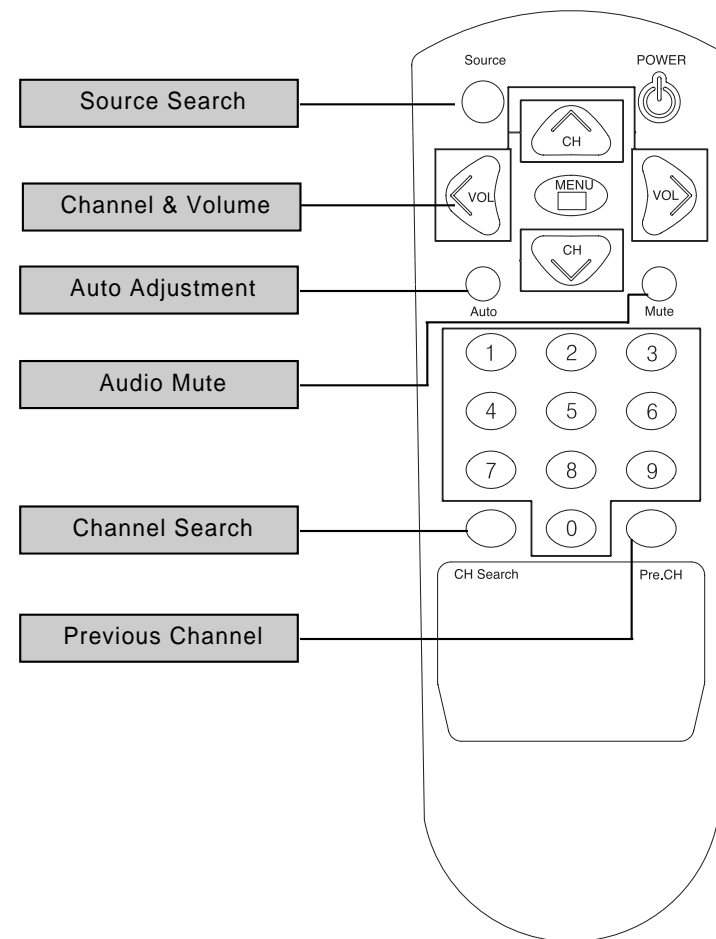
Adjusting Your LCD Monitor

APPENDIX

Table 1. Screen controls (Continued)

Icon	Menus and Sub-menus	Function Descriptions
	Adjustment	This function is active if you select an input source other than PC. (DVD, VCR, TV)
	Brightness	Adjust the brightness of video or TV without affecting PC RGB's brightness.
	Contrast	Adjust the contrast of video or TV without affecting PC RGB's contrast.
	Color	Change the richness of color.
	Tint	Change the tone of color.
	Sharpness	Adjust the sharpness of video or TV image.

▶ Remote Controller



APPENDIX

APPENDIX

▶ Product Features

Radio Frequency Compatibility Registration (Class B digital device)
This product has been approved for non-business purposes and may be used in any environment, including residential areas. (Class A devices are for business purposes and Class B devices radiate less radio frequency than Class A devices)
Power Saving Feature
<p>◆ <i>Display Power Manager Signaling (DPMS)</i></p> <p>Power management circuit signaled by the computer system, will reduce power consumption when the computer system is not in use. The power management feature requires that the video card of the computer should support DPMS function.</p> <p>General CRT monitors consume 100W but LCD monitors consume 30W. An advantage of this monitor is the lowest consumption. This monitor meet the VESA standard.</p>
Simple Design
This monitor is equipped with a control board for LCD monitor only that performs the best color display and has simple and easy options. Simple design produces a clean and tidy space.
Other Feature
This monitor is designed to be compatible with any PC configuration. You do not need to substitute hardware or purchase specific software. You only need to connect the signal cable of old CRT monitor.

▶ Troubleshooting

If you have a problem setting up or using your LCD monitor, you may be able to solve it yourself. Before contacting customer service, try the suggested actions that are appropriate to your problem.

Table 2. Troubleshooting - Image

Problem	Suggested Actions	Reference
Screen is blank and power indicator is off	Ensure that the power cord is firmly connected and the LCD monitor is on.	Connecting the monitor, page 4 - 5.
"Check Signal Cable" message	Ensure that the signal cable is firmly connected to the PC or video sources. Ensure that the PC or video sources are turned on.	Connecting the monitor, page 4 - 5.
"Out of Range" message	Check the maximum resolution and the frequency of the video adaptor. Compare these values with the data in the Display Modes Timing Chart.	Display Modes, page 24.
The image is too light or too dark	Adjust the Brightness and Contrast.	Brightness, page 14, 16. Contrast, page 14, 16.
Horizontal bars appear to flicker, jitter or shimmer on the image	Adjust the Phase function.	Adjustment, phase, page 14.
Vertical bars appear to flicker, jitter or shimmer on the image.	Adjust the Frequency function and then adjust the Phase function.	Adjustment, Frequency, phase, page 14.

APPENDIX

APPENDIX

Table 2. Troubleshooting - Image (Continued)

Problem	Suggested Actions	Reference
Screen is blank and power indicator light is steady amber or blinks every 0.5 or 1 seconds	The monitor is using its power management system. Move the computer's mouse or press a key on the keyboard	Power Saving Feature, page 18.
Image is not stable and may appear to vibrate	Check that the display resolution and frequency from your PC or video board is an available mode for your monitor. On your computer check: Control Panel, Display, Settings	Display Modes, page 24.
	If the setting is not correct, use your computer utility program to change the display settings.	Monitor Driver Installation, page 6 - 10.
	NOTE: Your monitor supports multiscan display functions within the following frequency domain:	
	Horizontal frequency: Vertical frequency: Maximum refresh rate:	30 kHz - 61 kHz 56 Hz - 75 Hz 1024 x 768 @ 75 Hz
Image is not centered on the screen.	Adjust the horizontal and vertical position.	H Position, page 14. V Position, page 14.
You need the monitor driver software	Download the driver from WWW pages: http://www.digitaltek.co.kr	

Table 2. Troubleshooting - Audio and TV

Problem	Suggested Actions	Reference
No sound	Ensure that the audio cable is firmly connected to both the audio-in port on your monitor and the audio-out port on your sound card.	Connecting the Monitor, page 4 - 5.
	Check the volume level	Audio Control, page 15.
Sound level is too low	Check the volume level	Audio Control, page 15.
	If the volume is still too low after turning the control to its maximum, check the volume control on the computer sound card or software program.	Refer to your computer, sound card or software documentation.
Sound is too high pitched or too low pitched	Adjust the Treble and Bass to appropriate level.	Audio Control, page 15.
TV signal is not received	Check "Channel system" and make sure you choose the correct channel system. Select "Channel auto program" to configure the channel system automatically.	Broadcasting systems, page 24.

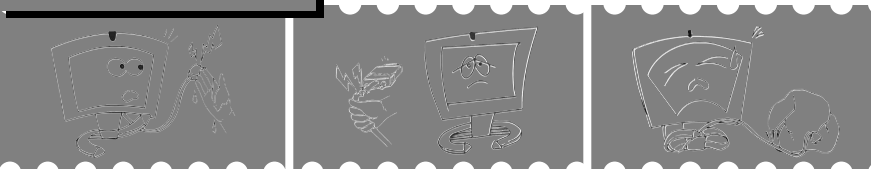
APPENDIX

APPENDIX

▶ Safety Precautions

The following information is to prevent damages and secure user's safety. Please read the following information carefully and use the monitor properly.

Power



1. Do not hold the plug with your hands wet.
; Doing so may create a danger of electric shock or fire.
2. Never disconnect it by pulling the cord.
; Doing so may create a danger of electric shock or fire.
3. Do not force to bend the cord or put any heavy materials on the cord.
; Doing so may create a danger of electric shock or fire.

Cleaning



1. Never hit the monitor or scratch the monitor with sharp materials.
; Doing so may damage the monitor or a danger of electric shock.
2. Unplug the monitor and Use a damp, lint-free cloth for cleaning. Do not use keton-type materials, ethyl alcohol, acid, toluene, ethyl acid, methyl or chloride.
; Doing so may create a danger of electric shock or fire.

Other precautions



1. Never touch the inside of the monitor.
; If you need a service, contact the service center.
 2. Keep the monitor away from anything magnetic.
; Noise may appears on the screen.
- When you store the monitor, keep the monitor away from direct sunlight and dust.



▶ Specifications

Table 3. Technical and environmental specifications

		DT-15NT
Panel	Size Display Size Type Pixel pitch Viewing Angle	15.0" Diagonal 304.1 (H) x 228.1 (V) mm a-si TFT active matrix 0.297 (H) x 0.297 (V) mm 70/70/60/60 (L/R/U/D) (Depending on the panel manufacturer, the viewing angle may be different from this spec.)
Frequency	Horizontal Vertical Display color	30 - 61 kHz (Automatic) 56 - 75 Hz (Automatic) 16,777,216 colors
Display Resolution	Optimum Mode Maximum Mode	1024 x 768 @ 60 Hz 1024 x 768 @ 75 Hz
Input Signal	Sync. Video signal	H/V Separate, TTL, P. or N. H/V Composite, TTL, P. or N. Sync-on-green 0.3 Vp-p, N. 0.7 Vp-p @ 75 ohm
TV, Video	Color system Sound system Video format	NTSC or PAL M/N CVBS, S-VHS
Power	AC Adapter	AC 100-240 Vrms (50 ~ 60Hz) DC 12V/3A
Power Consumption	Maximum Power Saving	38 W 8 W
Environmental Considerations	Operating Temperature Operating Humidity Storage Temperature Storage Humidity	50 ° F to 104 ° F (10 ° C to 40 ° C) 10% to 80% 13 ° F to 113 ° F (-25 ° C to 45 ° C) 5% to 95%
Audio Characteristics	Audio Input 1 Audio Input 2 Line-out (Audio out) Headphone out Frequency Response	RCA Jack Red(R) White(L), 0.5Vrms (-9dB) 3.5 ∅Stereo Jack, 0.7Vrms (-7dB) 3.5 ∅Stereo Jack, 0.7Vrms (-7dB) Max 10mW Output (3.5 ∅Stereo Jack 32 ∅) RF: 80Hz - 15KHz (at -3dB) A/V: 80Hz - 20KHz (at -3dB)

APPENDIX

APPENDIX

▶ Display Modes

For the display modes listed below, the screen image has been optimized during manufacture.

Table 4. Preset timing modes

Mode	Resolution	Horizontal Frequency(kHz)	Vertical Frequency(Hz)	Pixel Clock Frequency(MHz)	Sync Polarity (H/V)
VGA	720 x 400	31.469	70.087	28.322	-/+
	640 x 480	31.469	59.940	25.175	-/-
	640 x 480	37.500	75.000	31.500	-/-
SVGA	800 x 600	37.880	60.300	40.000	+/+
	800 x 600	46.875	75.000	49.500	+/+
XGA	1024 x 768	48.363	60.004	65.000	-/-
	1024 x 768	60.023	75.029	78.750	+/+

Following Table explains general international broadcasting systems. If your product is not correspond this table, it can operate abnormally. Then please contact sales department or custom satisfaction center.

Table 5. Broadcasting Systems

Color System	Sound System	Stereo System	Channel System	Countries
NTSC	M	A2	US	Korea
		BTSC (SAP)	US	USA, Canada, Chile, Venezuela, Cuba, Colombia, Jamaica, Mexico, Panama, Peru, Philippines, Puerto-Rico, Taiwan
		EIAJ	Japan	Japan
PAL	B/G	A2	CCIR	Germany, Austria, Swiss, Netherlands
			AUSTRALIA	Australia
		NICAM	CCIR	Sweden, Spain, Denmark, Norway, Finland, Belgium, Iceland, Portugal, Malaysia, Singapore, Thailand
	Unknown	CCIR	India, Israel, Kuwait, Jordan, Yugoslavia	
	I	NICAM	CCIR	UK, Hongkong

▶ Standard Certification Logos

<p>● MIC Logo</p> <p>The MIC certification of telecommunication devices is compulsory certification, pursuant to Article 33 of Framework Act on Telecommunications and Article 46 and 57 of Radio Wave Act. Complied with Article 3 of Telecommunication Devices Certification Regulation, any natural or juridical person who manufactures, imports, or sells telecommunication devices has to get the applicable certification for the devices, attach the related logo and distribute the devices. The reason MIC enacts and applies the standard regulations for telecommunication devices is for reducing the following matters to a minimum and protecting radio environment in Korea; undesired radio frequency energy caused by the devices, harmful interference to radio communications caused by the other devices or external radio, and injury or damage caused by undesired operation.</p>
<p>● CE Logo</p> <p>Classification: Integrated Standard Certification Logo of EU, Compulsory Standard Governing organization: EOTC (European Organization for Testing and Certification) Major target items: toys, gas fittings, machinery, radio conformity, telecommunication terminals, non-automatic scale, private safeguards, and etc.</p>
<p>● UL Listed Logo</p> <p>Classification: US Safety Standard, Voluntary Standard (Compulsory Standard in several provinces) Governing organization: Underwriters Laboratories Inc. Major target items: 1,400 items including electronic/electric equipments and accessories, machinery, fire extinguishers, protections against burglars, and etc.</p>
<p>● FCC Logo & ID NO</p> <p>Classification: US Radio Telecommunication Standard, Compulsory Standard. Governing organization: Federal Communications Commission Major target items: wireless phones, lifesaving equipments, high-frequency equipments for industrial/scientific/medical purposes, personal computers/peripherals, and etc.</p>
<p>● NOTE</p> <p>This equipment has been tested and found to comply with the limits for a Class B digital device, pursuant to part 15 of the FCC Rules. These limits are designed to provide reasonable protection against harmful interference in a residential installation. This equipment generates, uses and can radiate radio frequency energy and, if not installed and used in accordance with the instructions, may cause harmful interference to radio communications. However, there is no guarantee that interference will not occur in a particular installation. If this equipment does cause harmful interference to radio or television reception, which can be determined by turning the equipment off and on, the user is encouraged to try to correct the interference by one or more of the following measures: -Reorient or relocate the receiving antenna. -Increase the separation between the equipment and receiver. -Connect the equipment into an outlet on a circuit different from that to which the receiver is connected. -Consult the dealer or an experienced radio/TV technician for help.</p>



MagicWindow ■■■■■■■■■■

▶ Memo

CAUTION : Changes or modifications not expressly approved by the manufacturer responsible for compliance could void the user's authority to operate the equipment

The warranty period of the products is ONE YEAR.

PRODUCT WARRANTY CARD

GMS TECHNOLOGY warrants its products to be free for ONE YEAR from the original purchasing date.

Model	Serial No.
DT-15NT <input type="checkbox"/>	

Purchaser's Name	
Address	
Purchased Date	
Purchased agency	

Free Service

In the event that the general products have used for the business purpose, warranty period will be cut and applied to six months.

Type of purchaser's damage	Warranty Details		
	Warranty period	Outof Warranty period	
Troubles caused by the defects of performance and function under the normal usage.	Repairs are needed within 10 days from the purchase date.	Product replacement or full refund.	
	Repairs are needed within 1 month from the purchase date.	N/A	
	Damage is occurred during the installation and transportation at the purchase date.		Product replacement
	Repairs are needed for newly replaced product within 1 month from the replaced date.		Full refund.
	Replacement is impossible		
	Same defects are occurred up to 3 times.	Free Repairs	Charged repairs
	Same defects are occurred up to 4 times.	Product replacement or full refund.	Charged repairs
	Diverse defects are occurred up to 5 times.		Charged repairs
	GMS TECHNOLOGY loses the product delivered for repairing from the purchaser.		Refund after deducting the depreciation cost and adding 10% purchase price.
	Repairs are impossible because GMS TECHNOLOGY does not maintain the repair parts within the parts maintenance period.		Refund after deducting the depreciation cost.
Troubles caused by purchaser's intention or negligence	GMS TECHNOLOGY maintains the repair parts but repairs are impossible.		
	Repairs are impossible.	Product replacement after collecting the cost for charged repairs.	
	Repairs are possible.	Charged repairs	

Charged Service

If you call the service without following the troubleshooting in the manual, you may pay the service charge.
Please read the manual carefully.

① Troubles caused by purchaser's negligence

- Troubles caused by purchaser's faulty repairs and lack of reasonable care.
- Troubles caused by usage of wrong supply/voltage
- Troubles and damages caused by dropping of product in transportation after the installation.
- Troubles caused by usage of any parts not provided with the product.

② Troubles caused by other reasons.

Troubles caused by acts of God (fire, damage from salt, flood, and etc.).