

NEED MORE HELP?

For all support go to jabra.com/support

jabra.com/speak710

81-04212 B



Jabra Speak 710

Jabra



Jabra GN

Quick start guide

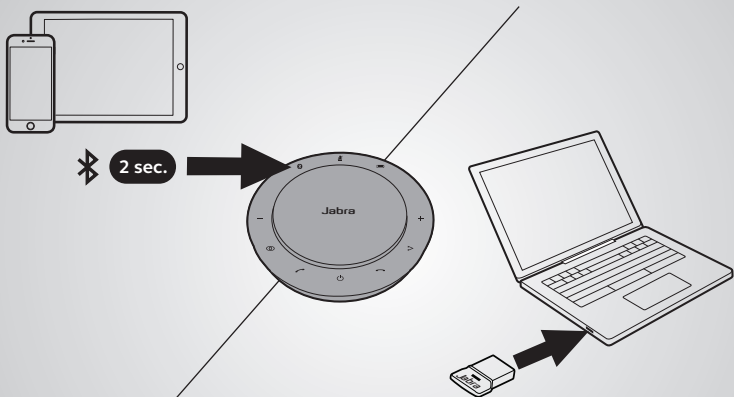
EN / FR / ES / PT / CS / CT / JP / TH / MY / KR / IN

GN Making Life Sound Better

BC

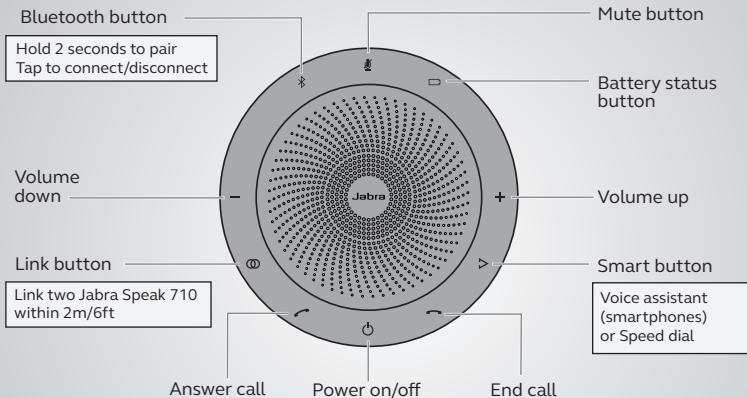
How to connect

using Bluetooth or USB dongle



The Jabra Speak 710 lasts for up to 15 hours of talk time.
It takes approx. 3 hours to charge using the USB cable.

How to use



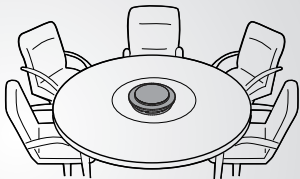
Personalize your Jabra Speak 710 using the Jabra Direct software.
Download for free at jabra.com/direct

Where to position

Desk



Small meeting room

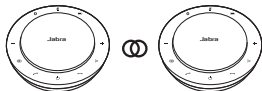
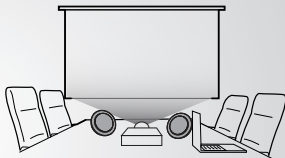



When sitting in front of the Jabra Speak 710 use the stand to better direct the audio.

Large meeting room



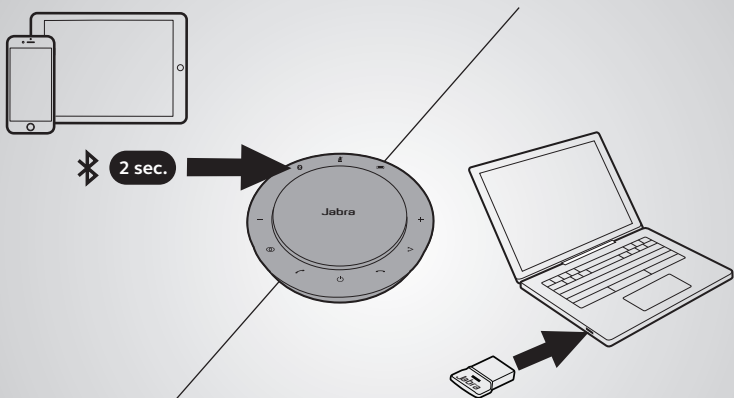
Stereo media



Tap  to link two Jabra Speak 710 within 2m/6ft.

Comment le connecter

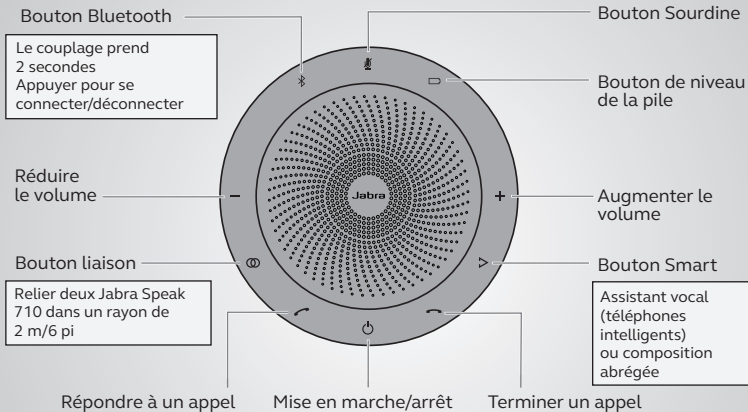
avec Bluetooth ou une clé USB



Avec le Jabra Speak 710, plus de 15 heures d'autonomie de conversation.
Un chargement complet avec câble USB prend environ 3 heures.

Comment l'utiliser

FRANÇAIS



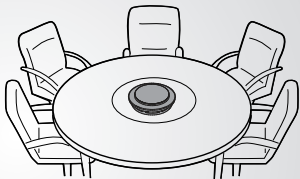
Personnaliser votre Jabra Speak 710 en utilisant le logiciel Jabra Direct. Télécharger gratuitement sur jabra.com/direct

Où le placer

Bureau



Petite salle de réunion



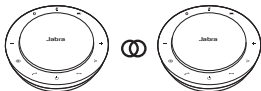
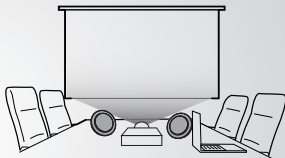
Une fois assis en face du Jabra Speak 710
utiliser le support pour mieux diriger le son.




Grande salle de réunion



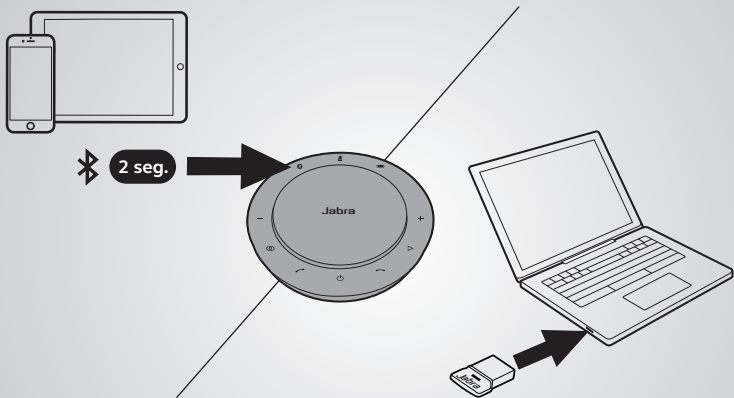
Support stéréo



Appuyer sur  pour relier les deux Jabra Speak 710 dans un rayon de 2 m/6 pi.

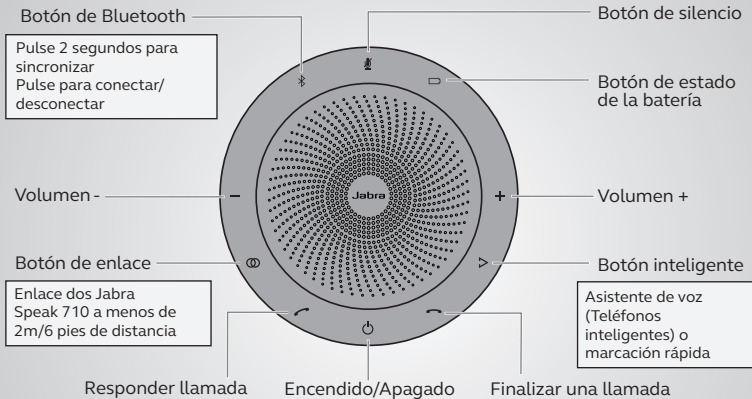
Cómo conectarlo

con Bluetooth o llave electrónica USB



Jabra Speak 710 ofrece hasta 15 horas de conversación.
Lleva aproximadamente 3 horas cargar con el cable USB.

Cómo utilizarlo



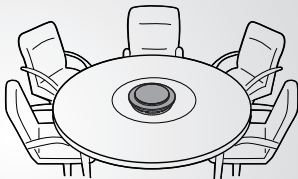
Personalice su Jabra Speak 710 con el software Jabra Direct.
 Descárguelo gratis en jabra.com/direct

Dónde colocarlo

Escritorio



Sala de juntas pequeña

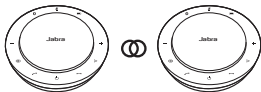
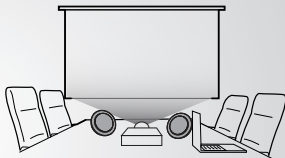



Cuando se sienta frente al Jabra Speak 710 use la base para dirigir mejor el audio.

Sala de juntas grande



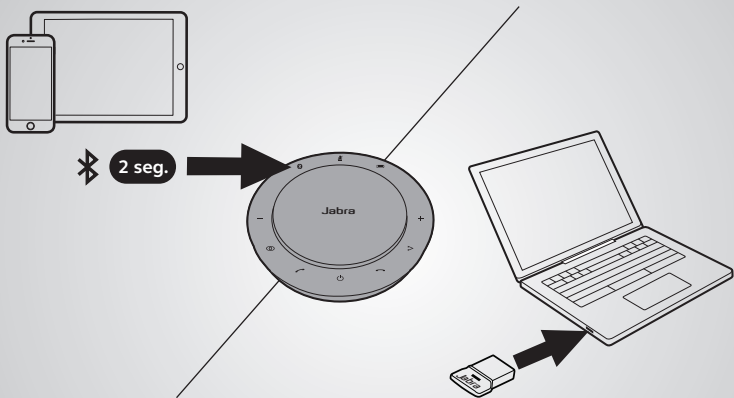
Sistemas estereofónicos



Pulse  para enlazar dos Jabra Speak 710
A menos de 2m/6 pies.

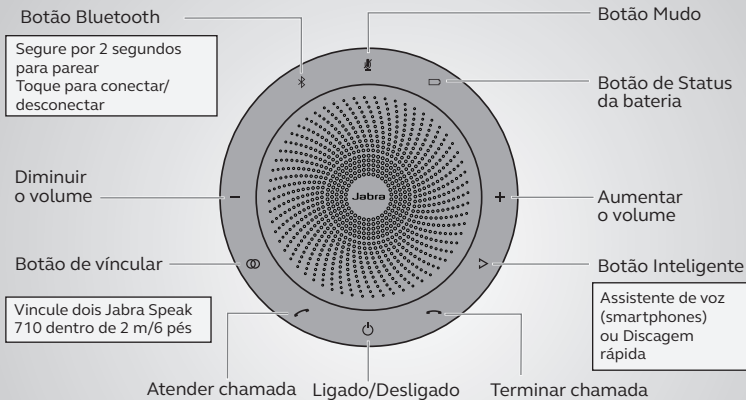
Como conectar-se

usando Bluetooth ou dongle USB



O Jabra Speak 710 dura até 15 horas para tempo de fala.
Leva aproximadamente 3 horas para carregar com cabo USB.

Como usar



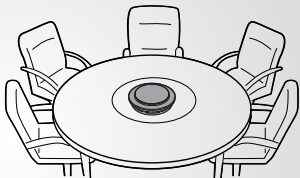
Personalize o seu Jabra Speak 710 usando o software Jabra Direct.
Baixe gratuitamente em jabra.com/direct

Onde posicionar

Mesa



Pequena sala de reunião

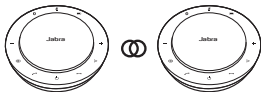
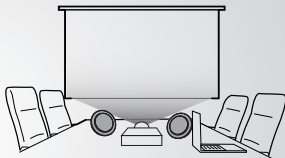



Ao se sentar em frente ao Jabra Speak 710 use o suporte para direcionar melhor o áudio.

Grande sala de reunião



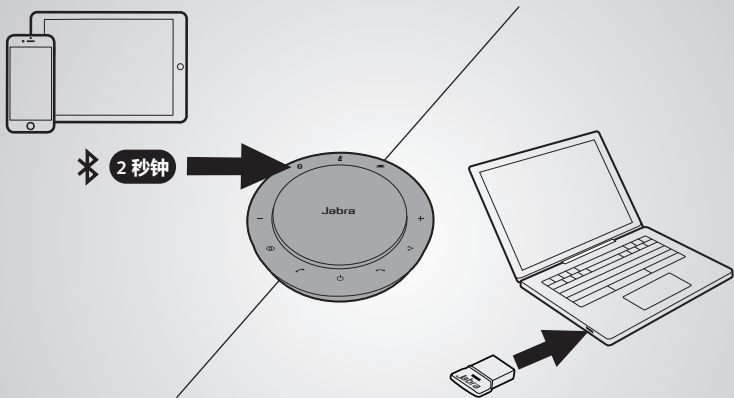
Mídia estéreo



Toque em  para vincular dois Jabra Speak 710 dentro de 2 m/6 pés.

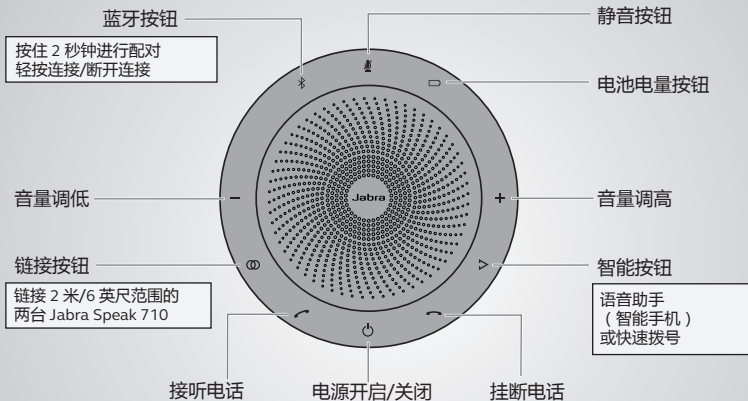
如何连接

使用蓝牙或 USB 适配器



Jabra Speak 710 可持续通话长达 15 小时。
使用 USB 线缆充电约需 3 小时

如何使用



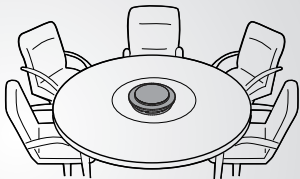
使用 Jabra Direct 软件个性化您的 Jabra Speak 710
从 jabra.com/direct 免费下载

放在哪里

桌面



小型会议室

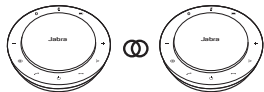
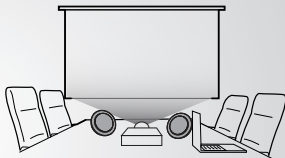


坐在 Jabra Speak 710 的前方时，
使用支架以便更好地控制音频的方向

大型会议室



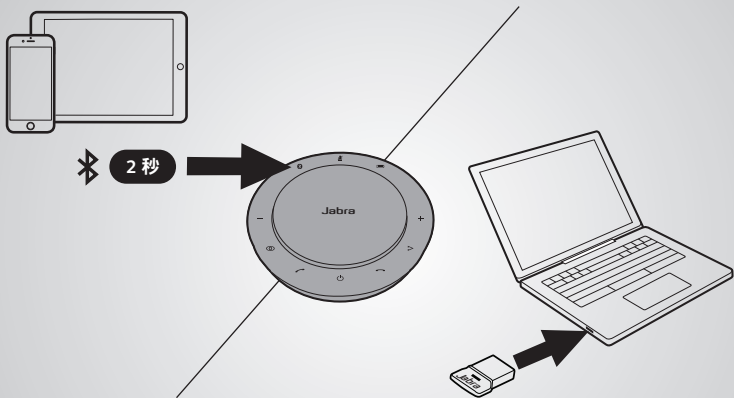
立体声媒体



轻按Ⓞ以链接 2 米/6 英尺范围的
两台 Jabra Speak 710

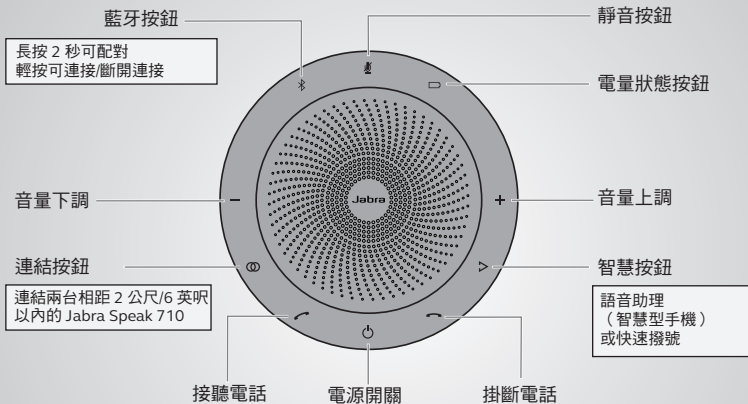
如何連接

使用藍牙或 USB 接收器



Jabra Speak 710 提供長達 15 小時的通話時間。
用 USB 線充電約需 3 小時。

如何使用



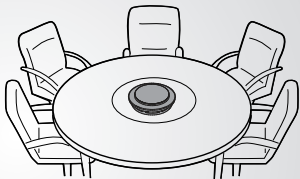
利用 Jabra Direct 軟體可對 Jabra Speak 710 進行個人化設定。
請至 jabra.com/direct 免費下載。

擺設位置

辦公桌



小會議室

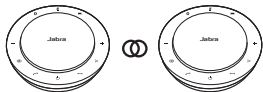
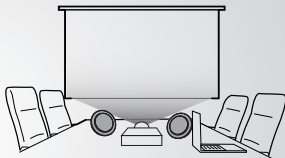



若坐在 Jabra Speak 710 正前方，
使用腳架可讓聲音對得更準。

大會議室



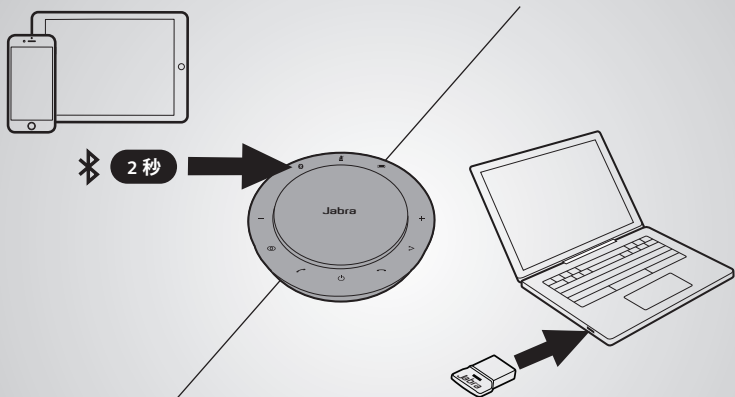
立體聲媒體



輕按  可連結兩台相距 2 公尺/6 英尺以內的 Jabra Speak 710。

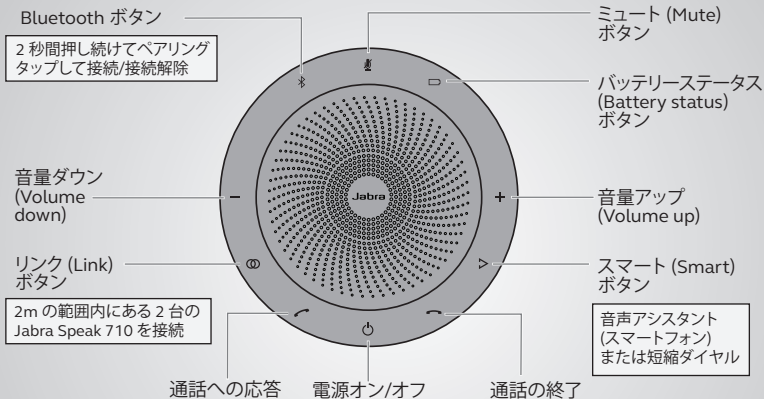
接続方法

Bluetooth または USB ドングルを使用する



Jabra Speak 710 の連続通話時間は、最大 15 時間です。
USB ケーブルを使用する充電には約 3 時間かかります。

使用方法



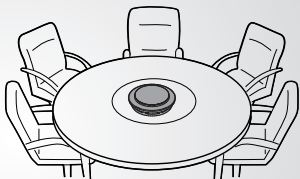
Jabra Direct ソフトウェアを使用して Jabra Speak 710 を
カスタマイズ jabra.com/direct から無料でダウンロード

使用場所

デスク



小さな会議室

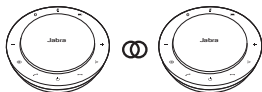
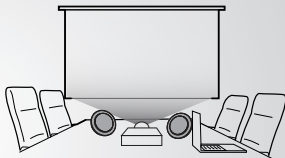


Jabra Speak 710 の前に座る場合
スタンドを使用すると音声の伝達が向上します。

大きな会議室



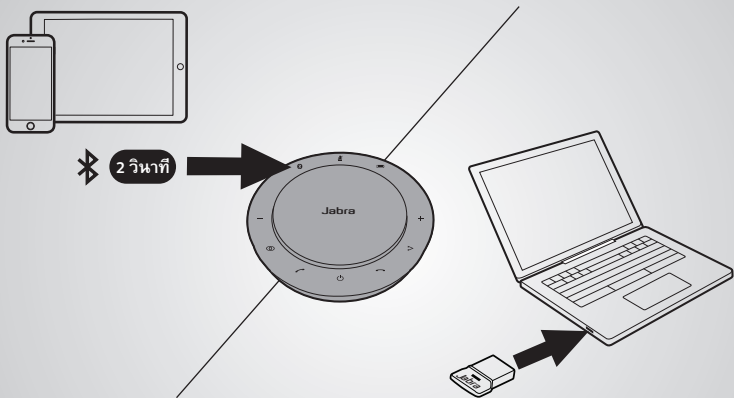
ステレオメディア



⊕ タップして 2m の範囲内にある 2 台の Jabra Speak 710 を接続。

วิธีเชื่อมต่อ

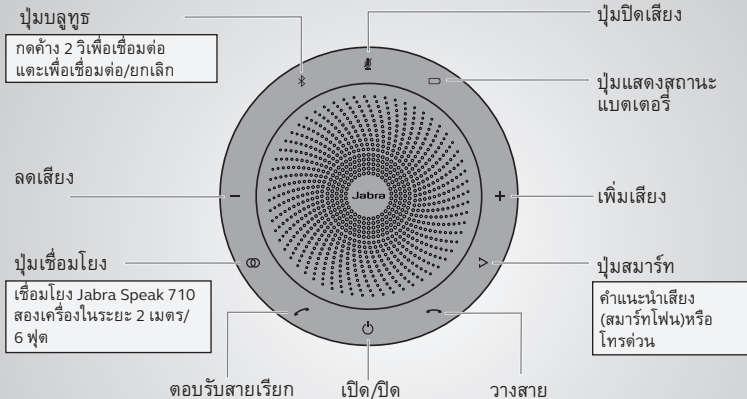
โดยใช้บลูทูธหรือ USB



Jabra Speak 710 สามารถใช้สนทนาได้นานถึง 15 ชั่วโมง
จะใช้เวลาประมาณ 3 ชั่วโมงในการชาร์จแบตเตอรี่ผ่านสาย USB

วิธีใช้

ภาษาไทย



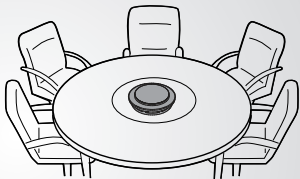
ปรับแต่งการตั้งค่า Jabra Speak 710 ของคุณโดยใช้ซอฟต์แวร์ Jabra Direct ดาวน์โหลดฟรีได้ที่ jabra.com/direct

ตำแหน่งสำหรับใช้งาน

โต๊ะ



ห้องประชุมขนาดเล็ก

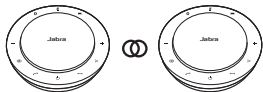
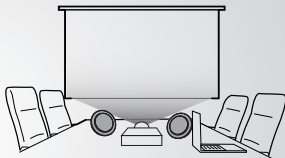



เมื่อนั่งด้านหน้าของ Jabra Speak 710
ใช้ขาตั้งเพื่อให้ได้ยินเสียงชัดเจนยิ่งขึ้น

ห้องประชุมขนาดใหญ่

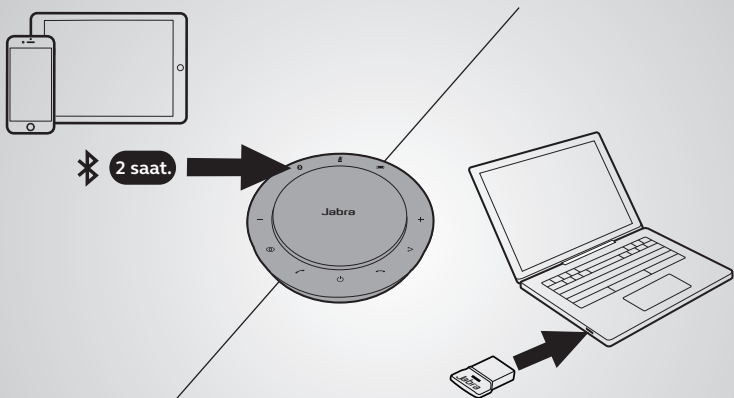


สื่อสเตริโอ



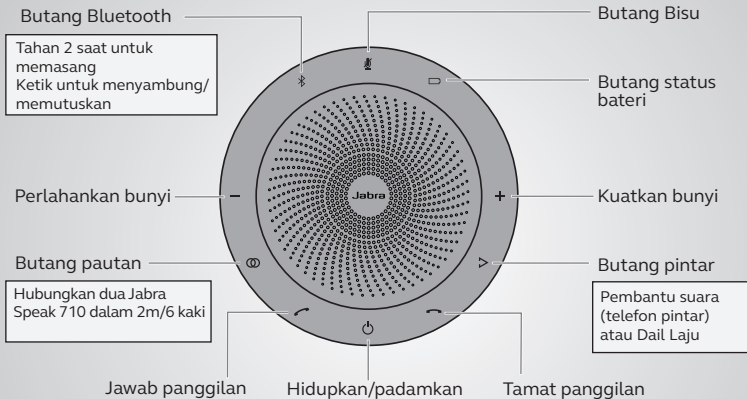
แต่ละ  เพื่อเชื่อมโยง Jabra Speak 710
สองเครื่อง ในระยะ 2 เมตร/6 ฟุต

Cara untuk menyambung menggunakan Bluetooth atau anak kunci USB



Jabra Speak 710 tahan sehingga 15 jam masa bercakap. Ia mengambil kira-kira 3 jam untuk mengecas menggunakan kabel USB.

Cara menggunakan



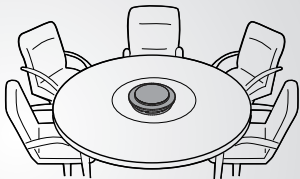
Peribadikan Jabra Speak 710 anda menggunakan perisian Jabra Direct. Muat turun secara percuma di jabra.com/direct

Tempat untuk meletak

Meja



Bilik mesyuarat kecil

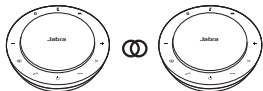
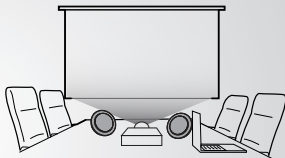



Semasa duduk di depan Jabra Speak 710 gunakan sangga untuk mengarahkan audio dengan lebih baik.

Bilik mesyuarat besar



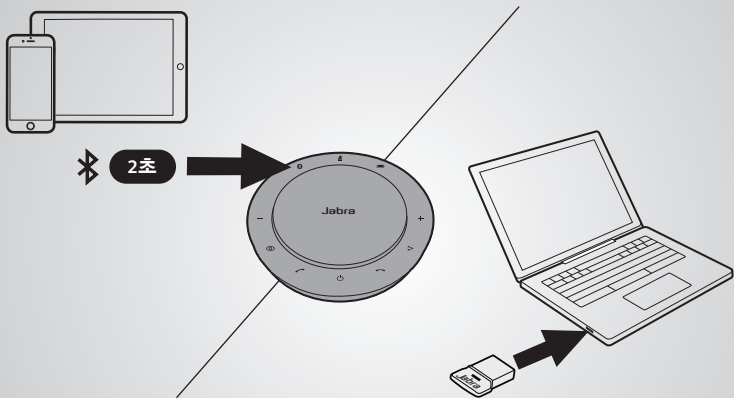
Media stereo



Ketik  untuk menyambung dua Jabra Speak 710 dalam 2m/6 kabl.

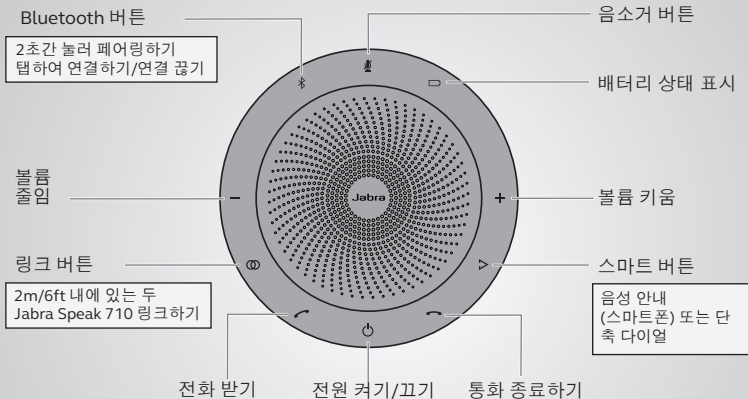
연결하는 방법

Bluetooth 또는 USB 동글 사용



Jabra Speak 710의 최대 통화 시간은 15시간입니다.
USB 케이블로 충전하는 데에는 약 3 시간이 걸립니다.

사용 방법



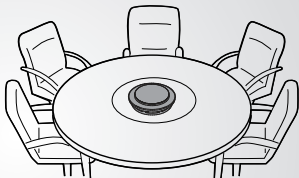
Jabra Direct 소프트웨어를 사용하여 Jabra Speak 710를 사용자 정의합니다. jabra.com/direct에서 무료 다운로드하기

배치

데스크



작은 회의실

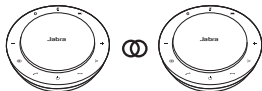
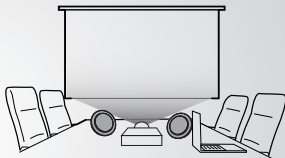



Jabra Speak 710 앞에 앉을 때는 스탠드를 사용하여 오디오 방향을 적합하게 맞출 수 있습니다.

큰 회의실



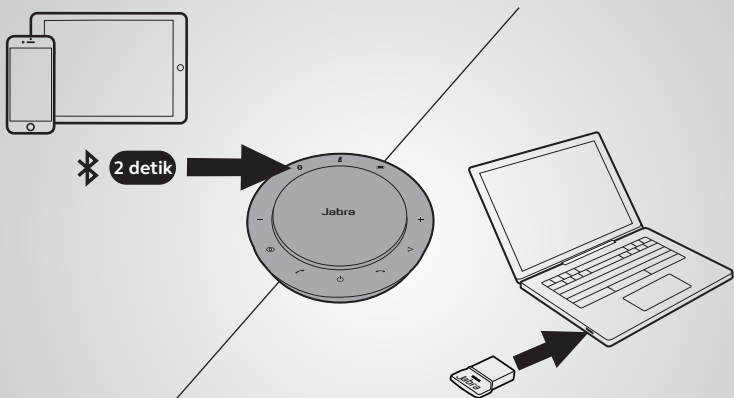
스테레오 미디어



탭하여  두 Jabra Speak 710를
2m/6ft 범위 내에서 연결합니다.

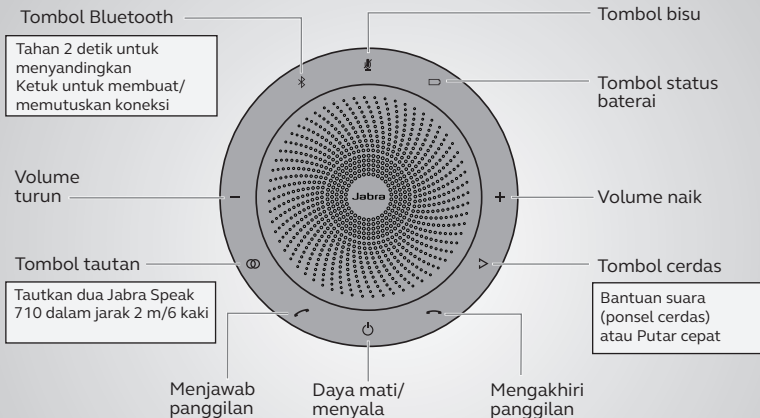
Cara membuat koneksi

menggunakan dongle Bluetooth atau USB



Jabra Speak 710 tahan hingga 15 jam durasi bicara. Diperlukan sekitar 3 jam untuk mengisi baterai menggunakan kabel USB.

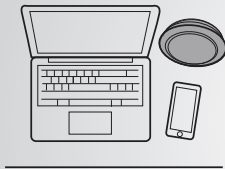
Cara penggunaan



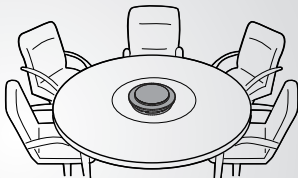
Personalisasikan Jabra Speak 710 Anda menggunakan perangkat lunak Jabra Direct. Unduh secara gratis dari jabra.com/direct

Di mana menempatkan

Meja



Ruang rapat kecil

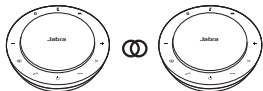
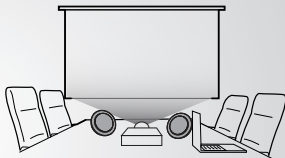



Saat duduk di depan Jabra Speak 710 gunakan penahan untuk mengarahkan audio secara lebih baik.

Ruang rapat besar



Media stereo



Ketuk  untuk menautkan dua Jabra Speak 710 dalam jarak 2 m/6 kaki.



本产品符合中国[电器电子产品有害物质限制使用管理办法]-简称中国ROHS，
本产品及其包装材料可能含有有害物质的名称和含量，如下所示：

部件名称	有害物质					
	铅 (Pb)	汞 (Hg)	镉 (Cd)	六价铬 (Cr (VI))	多溴联苯 (PBB)	多溴二苯醚 (PBDE)
电子元器件	X	0	0	0	0	0
连接器	X	0	0	0	0	0
麦克风	X	0	0	0	0	0
交流电源插头 (若提供了交流充电器)	X	0	0	0	0	0

本表格依据SJ/T 11364 的规定编制。

0: 表示该有害物质在该部件所有均质材料中的含量低于GB/T 26572规定的限量要求。

X: 表示该有害物质至少在该部件的某一均质材料中的含量超出GB/T 26572规定的限量要求。
所有显示 X 的情况，是按照欧盟 RoHS 采用了容许的豁免指标。

如本手册所述，在正常使用条件下，本产品的环保使用期为 10 年。在此期间，产品不会泄露任何危险物质。

本产品可以回收，必须按照当地法规处理。

© 2017 GN Audio A/S. All rights reserved. Jabra® is a trademark of GN Audio A/S. The Bluetooth® word mark and logos are registered trademarks owned by the Bluetooth SIG, Inc. and any use of such marks by GN Audio A/S is under license.

MADE IN CHINA

MODEL: PHS040W / END040W

FCC ID: BCE-PHS040W / END040W

IC: 2386C-PHS040W/ END040W

CMIIT ID: 2017DJ0327

GB 15629.1102-2003



MSIP-CMA
GN-PHS040W
MSIP-CRM-
GN-END040W



CCA17LP0150T8
CCA17LP0460T0



006-000457
006-000458

