

User Guide

BlackBerry Wireless Headset HS-300

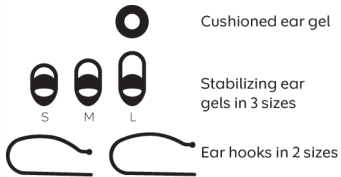


Getting started

Drive safely!

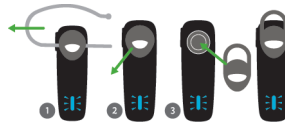
WARNING: Driving a vehicle requires your full attention to road conditions, weather, and vehicular traffic. It is important to set up your BlackBerry® Wireless Headset HS-500 prior to driving. Using this hands-free accessory may cause you to be distracted and may put you, your passengers, and occupants of other vehicles at risk of suffering bodily injury, death and/or loss of property. You should only use the hands-free accessory where permitted by law and when you will not be distracted from the proper operation of your motor vehicle.

Components



Change the ear piece

1. If necessary, gently pull the ear hook to remove it.
2. Gently pull off the ear gel at its edges.
3. Replace the ear gel with a new ear gel.



Turn on or turn off the headset

When you turn on the headset for the first time, it's in pairing mode.

1. Try different combinations of the ear gels and the ear hook to find your best fit.
2. Slide the power switch to the **On** position.
3. Insert the ear gel into your ear so that the headset points toward your mouth.
4. To turn off the headset, slide the power switch to the **Off** position.

Pairing the headset



Pair and connect the headset with your BlackBerry device

Before you can use your headset, you need to pair it with your BlackBerry® device. When you turn on the headset for the first time, it's already in pairing mode. You can press and hold the Call control button for 5 seconds to turn on pairing mode at any time.

1. Slide the power switch to the **On** position.
2. On the Home screen of your BlackBerry device, click the **Manage Connections** icon > **Set Up Bluetooth** or **Bluetooth Connections** > **Search**.
3. Click **BlackBerry HS-300**.
4. Type the passkey **0000**.
5. Press the key on the keyboard.

EN-US

©2010 Research In Motion Limited. All rights reserved. BlackBerry®, RIM®, Research In Motion®, SureType®, SurePress™ and related trademarks, names and logos are the property of Research In Motion Limited and are registered and/or used in the U.S. and countries around the world. Bluetooth is a trademark of Bluetooth SIG. Google Mail is a trademark of Google Inc. Hotmail and Windows Live are trademarks of Microsoft Corporation. Wi-Fi is a trademark of the Wi-Fi Alliance. All other trademarks are the property of their respective owners. This documentation is provided "as is" and without condition, endorsement, guarantee, representation or warranty, or liability of any kind by Research In Motion Limited and its affiliated companies, all of which are expressly disclaimed to the maximum extent permitted by applicable law in your jurisdiction.

LANG-001 | PRINTSPEC-100 | SWD -1237256-0816015745-001 |

When you've successfully completed the pairing process, you hear "Connected" through the headset.

You can add your headset to the list of Trusted Devices to prevent a prompt from appearing each time you turn on the headset. For more information, click the **Help** icon on the Home screen of your BlackBerry device.

For information about how to pair a third-party Bluetooth® enabled device with your headset, see the help that came with that device.

About pairing the headset with two or more Bluetooth enabled devices

The headset features Bluetooth® technology with multipoint signaling that allows you to pair with two or more Bluetooth enabled devices at the same time. The headset manages calls received from one device at a time. For example, if you're using the headset for a call on your BlackBerry device and you receive a call on another mobile device that is paired with your headset, the second call isn't directed to the headset.

Using the headset

Common tasks

You can complete the following actions by tapping or pressing the call control button when the headset is paired and connected with your BlackBerry® device.

Action	Call control button
Turn on pairing mode	Press and hold for 3 seconds.
Clear pairing list	Press and hold for 5 seconds.
Cancel pairing mode	Tap 1 time.

Call tasks

You can complete the following call tasks when your headset is paired and connected with your device.

Action	Call control button
Answer a call	Tap 1 time

Action	Call control button
Answer a second call	Tap 1 time
Return to the first call or switch between calls	Press and hold until you hear 2 beeps.
Join two calls	Press and hold for 3 seconds.
End a call	Tap 2 times
Mute a call	Tap 1 time When mute is turned on, your headset beeps periodically.
Turn off mute	Tap 1 time
Ignore a call	Tap 2 times
Redial the last phone number	Tap 2 times

Voice confirmations

Your headset helps confirm the actions you've completed with short statements that you hear through your headset.

Action	Voice confirmation
Turned on the headset	"Hello"
Turned on pairing mode	"Pairing mode"
Paired headset with your device	"Connected"
Ignored an incoming call	"Call rejected"
Turned on mute	"Mute on"
Turned off mute	"Mute off"
Switched between 2 calls	"Call swapped"
Redialed a phone number	"Last number redial"

Action	Voice confirmation
Ended a call	"Call ended"
Bluetooth® connection is not active	"Disconnected"
Charged the headset	"Battery low"
Turned off the headset	"Goodbye"

Charge the headset

Your headset comes partially charged and ready for use. When the battery power level is low, the rapid charge feature can give you as much as 1 hour of talk time with as little as 5 minutes of charging time. You can gain over 2 hours of talk time by charging for only 15 minutes.

1. Connect the smaller end of a micro-USB cable or smaller end of a car charger to the charging port on the headset.
2. Do one of the following:

- Connect the larger end of the micro-USB cable to the USB power plug or the USB port on your computer.
- Plug the larger end of the car charger into your car's power outlet.

More information

About automatic volume control

When you use the headset for the first time, you can use the volume controls on your BlackBerry device to set the volume to a comfortable listening level. When the noise level around you changes, the headset is designed to increase or decrease the volume to maintain your comfortable listening level automatically.

About using the headset with a GPS enabled BlackBerry device

If your BlackBerry® device supports GPS technology and you're using a third-party location-based app on your device that provides driving directions, the headset can announce those directions after you pair it with your device.

For more information about using GPS technology with your headset, click the **Help** icon on the Home screen of your BlackBerry device.

LED notifications

Red LED



Slow flashes: microphone is muted

Quick flashes: not connected to the device

Quick flashes, followed by a pause: battery power level is low

Blue LED



Flashing: connected to a call

One slow flash: turned on and connected to your device

Three quick flashes: incoming call

Five quick flashes: reconnecting with the last device you paired with



Blue and red LED



Ready for pairing

Green LED



Flashing: turning on or charging

One flash: charging and at low battery level

Two flashes: charging and at 50% battery level

Three flashes: charging and at high battery level

Solid: fully charged



Troubleshooting

I can't pair the headset with my device

You might have accidentally deleted the pairing options that you set for your headset. Complete the steps for connecting and pairing your headset with your BlackBerry® device.

I can't hear anything when I use my headset

Try the following actions:

- Turn up the volume on your BlackBerry® device.
- Make sure that your headset is turned on and is connected to your device.

I hear static noise when I use my headset

The headset is designed to be used within 10 meters (33 feet) of your device, without any large objects in between.

Try the following actions:

- Move away from any large objects that might cause interference.
- Keep your headset on the same side of your body as your device.

Safety information

This accessory contains a lithium-polymer battery pack that might present a fire or chemical burn hazard if mistreated. Do not disassemble, attempt to repair, crush, puncture or otherwise misuse the accessory and battery. Keep the accessory and battery away from heat sources. To reduce the risk of fire, electric shock, or malfunction, do not expose this accessory at any time to water, rain, moisture, explosive fumes, or magnets. Keep the accessory out of the reach of children. Follow local regulations for information about the disposal of electronic products and batteries in your area.

This accessory is safe for use with chargers or power adapters that are approved by Research In Motion.

Clean the accessory only with a soft dry cloth.

This accessory transmits radio frequency (RF) signals. RF signals can potentially disrupt medical devices and other equipment. If you have a medical device such as a pacemaker or hearing aid, prior to use of this accessory, consult your physician and the

manufacturer of your medical device to determine if this accessory is safe for your use. This accessory has an LED light that flashes as a notifier. If you are susceptible to epileptic seizures or blackouts, consult your physician before using the accessory. You should not rely on any wireless device for essential communications, including medical emergencies. Emergency numbers may vary by location and emergency calls may be blocked or impeded by network, environmental, or interference issues.

RIM is not responsible for use of this accessory in a manner prohibited by regulations in your area and any consequences arising from misuse. Improper use might invalidate any warranty and might be dangerous.

EU regulatory conformance

This product is CE marked according to the provisions of the R&TTE Directive (99/5/EC). Research In Motion Limited hereby declares that this BlackBerry® Wireless Headset is in compliance with the essential requirements and other relevant provisions of Directive 1999/5/EC.



The Declaration of Conformity made under Directive 1999/5/EC is available for viewing at the following location in the EU community:

Research In Motion UK Limited
200 Bath Road
Slough, Berkshire SL1 3XE
United Kingdom