

## NEED MORE HELP?

Why wait? Go to our support page and find all the answers you're looking for 24-hours a day. [www.jabra.com/style](http://www.jabra.com/style)

TOLL FREE Customer Contact Details:

NA Support

Email: [techsupp@jabra.com](mailto:techsupp@jabra.com)

Twitter: [twitter.com/jabra\\_US](https://twitter.com/jabra_US)

<http://www.jabra.com/mobilesupport>

(For the latest support info  
and online user manuals)

1 (800) 327-2230 (U.S.)

1 (800) 489-4199 (Canada)

Design Registration Pending International

For more information, please visit  
[www.jabra.com](http://www.jabra.com)

JABRA STYLE

**Jabra**<sup>®</sup>  
YOU'RE ON

**GET STARTED IN UNDER**

**5**  
**MINUTES**

[jabra.com/style](http://jabra.com/style)

A BRAND BY

**GN Netcom**

© 2013 GN Netcom A/S (North America: GN Netcom US, Inc.). All rights reserved. Jabra® is a registered trademark of GN Netcom A/S. All other trademarks included herein are the property of their respective owners. The Bluetooth® word mark and logos are owned by the Bluetooth SIG, Inc. and any use of such marks by GN Netcom A/S is under license. (Design and specifications subject to change without notice).

MADE IN CHINA  
MODEL: OTE14

FCC ID: BCE-OTE14  
IC: 2386C-OTE14



**Bluetooth®**

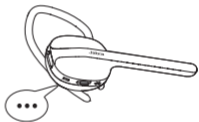
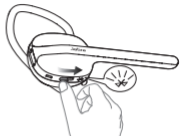
[www.jabra.com](http://www.jabra.com)

ENGLISH .....	1
FRANÇAIS .....	5
ESPAÑOL .....	9
PORTUGUÊS .....	13

# 1 HOW TO CONNECT

## CONNECTING WITH A BLUETOOTH® DEVICE

1. Hold the **Off/On/Pairing** switch in the Pairing position for 3 seconds.
2. Pairing mode will be announced in the headset, and the light will flash blue.
3. Follow the voice-guided pairing instructions to pair to your Bluetooth device.



## CONNECTING WITH AN NFC DEVICE

1. Turn the headset on (set the **Off/On/Pairing** switch to the On position).
2. Hold an NFC device against the NFC zone of the headset (the Jabra logo).



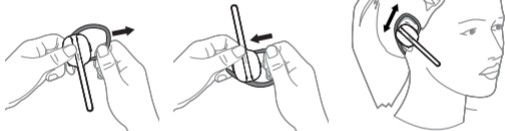
# 2 HOW TO WEAR

ENGLISH

## LEFT OR RIGHT EAR WEARING STYLE

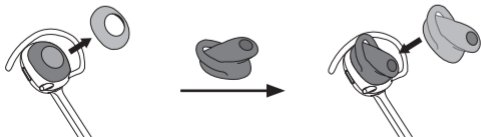
The headset can be worn on the left or the right ear. To switch ear:

1. Remove the earhook.
2. Flip the headset and insert the earhook.
3. Adjust the height of the earhook up or down for best fit.

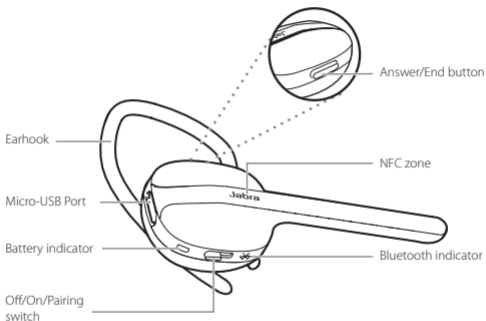


## CHANGING EARGELS

Get the perfect comfort fit by changing the eargels.




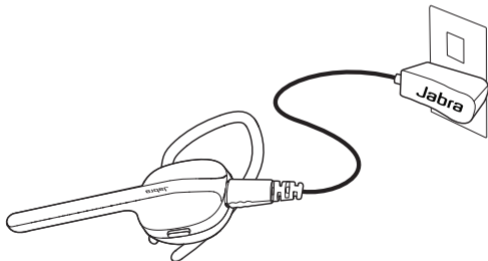
# 3 HOW TO USE



## IMPORTANT

Download the Jabra Assist App for your Android™ or iOS device to enhance your Jabra experience.

	FUNCTION	ACTION
	Answer/end call	Tap the <b>Answer/end</b> button
	Reject call	Press and hold (1 sec) the <b>Answer/end</b> button
	Redial last number	Double-tap the <b>Answer/end</b> button
	Volume controls	The volume adjusts intelligently depending on the surrounding environment



It takes approx. 2 hours to fully charge the battery

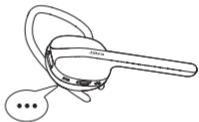
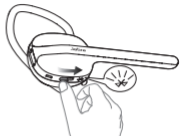
Design Registration Pending International



# 1 COMMENT LE CONNECTER

## SE CONNECTER À UN PÉRIPHÉRIQUE BLUETOOTH<sup>MD</sup>

1. Glissez le commutateur **Marche/Arrêt/Appariement** à la position Appariement pendant 3 secondes.
2. Le mode d'appariement sera annoncé dans le casque et le voyant clignotera en bleu.
3. Suivez les instructions vocales d'appariement pour appairier votre périphérique Bluetooth.



## SE CONNECTER À UN PÉRIPHÉRIQUE NFC

1. Allumez le casque (réglez le commutateur **Marche/Arrêt/Appariement** à la position Marche).
2. Maintenez un périphérique NFC contre la zone NFC du casque (le logo Jabra).



# 2 COMMENT LE PORTER

FRANÇAIS

## PORT À GAUCHE OU À DROITE

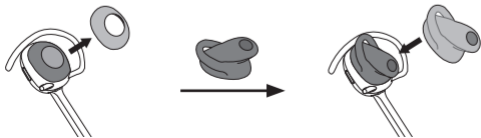
Le casque se porte sur l'oreille gauche ou droite. Pour changer d'oreille :

1. Retirez le crochet auriculaire.
2. Retournez le casque et insérez le crochet auriculaire.
3. Réglez la hauteur du crochet auriculaire vers le haut ou vers le bas afin d'obtenir le meilleur ajustement.

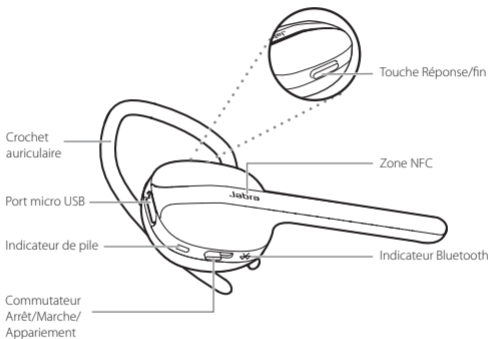


## CHANGER LES OREILLETES EARGELS

Obtenir l'ajustement parfaitement confortable en changeant les oreillettes Eargels.




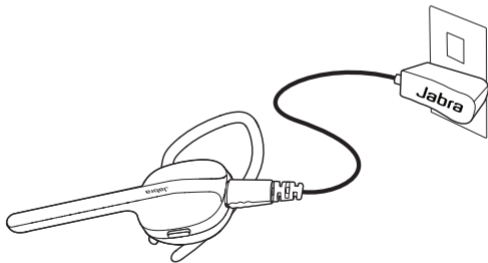
# 3 COMMENT L'UTILISER



## IMPORTANT

Télécharger l'application Jabra Assist pour votre Android<sup>MC</sup> ou un appareil iOS pour améliorer votre expérience Jabra.

	FONCTION	ACTION
	Répondre/mettre fin à un appel	Appuyez brièvement sur la touche <b>Réponse/fin</b>
	Refuser un appel	Appuyez et maintenez appuyée (1 seconde) la touche <b>Réponse/fin</b>
	Recomposer le dernier numéro	Tapez deux fois sur la touche <b>Réponse/fin</b>
	Contrôle de volume	Le volume s'ajuste intelligemment en fonction de l'environnement



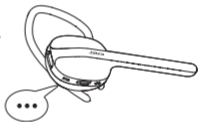
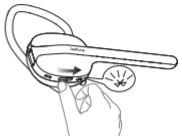
Une charge complète s'effectue en environ 2 heures.

Enregistrement de dessin en attente au niveau international

# 1 CÓMO CONECTARLO

## CONEXIÓN A UN DISPOSITIVO BLUETOOTH®

1. Mantenga presionado el botón **On/Off/Sincronización** en la posición de sincronización durante 3 segundos.
2. Se anunciará el inicio del modo de sincronización en los auriculares y comenzará a parpadear la luz azul.
3. Siga las instrucciones de voz para sincronizar su dispositivo Bluetooth.



## CONEXIÓN A UN DISPOSITIVO NFC

1. Encienda el auricular (ajuste el botón **On/Off/Sincronización** en la posición On de encendido).
2. Sujete un dispositivo compatible con NFC junto a la zona NFC de los auriculares (el logotipo de Jabra).



## 2 CÓMO USARLO

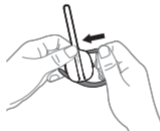
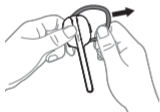
ESPAÑOL

### ESTILO DE USO EN EL OÍDO IZQUIERDO O DERECHO

Puede usar el auricular en la oreja izquierda o derecha.

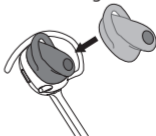
Para cambiar de oreja:

1. Retire el gancho para la oreja.
2. De vuelta al auricular e inserte el gancho.
3. Ajuste la altura del gancho hacia arriba o hacia abajo para un mejor calce.

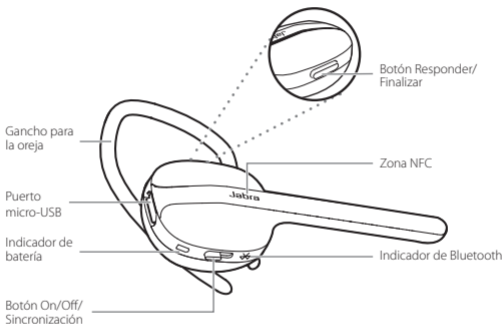


### CAMBIO DE LOS EARGELS

Obtenga un calce perfecto y cómodo cambiando los eargels.




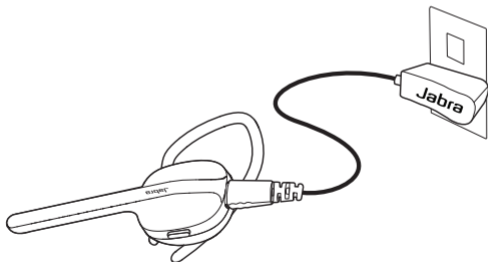
# 3 CÓMO UTILIZARLO



## IMPORTANTE

Descargue la aplicación Jabra Assist para su dispositivo Android™ o iOS para mejorar su experiencia con Jabra.

	FUNCIÓN	ACCIÓN
	Responder/ Finalizar llamadas	Pulse el botón <b>Responder/Finalizar</b>
	Rechazar llamadas	Presione el botón <b>Responder/Finalizar</b> y manténgalo presionado (1 segundo)
	Volver a marcar el último número	Pulse dos veces el botón <b>Responder/Finalizar</b>
	Controles de volumen	El volumen se ajusta de forma inteligente según el entorno



Lleva aproximadamente 2 horas cargar la batería por completo.

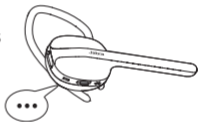
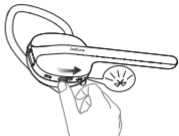
Registro internacional del diseño pendiente



# 1 COMO CONECTAR

## CONECTAR COM UM DISPOSITIVO BLUETOOTH®

1. Mantenha o interruptor **Ligar/Desligar/Pareamento** na posição Pareamento por 3 segundos.
2. O modo de pareamento será anunciado nos fones de ouvido e a luz piscará azul.
3. Siga as instruções de pareamento orientadas por voz para parear com o seu dispositivo Bluetooth.



## CONEXÃO COM UM DISPOSITIVO NFC

1. Ligue o fone de ouvido (coloque o interruptor **Ligar/Desligar/Pareamento** na posição Ligar).
2. Segure um dispositivo NFC contra a zona NFC dos fones de ouvido (a logo Jabra).



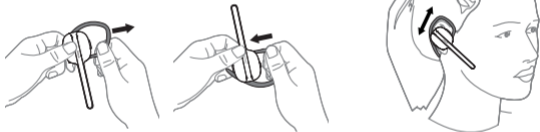
## 2 COMO USAR

PORTUGUÊS

### ESTILO DE USO NA ORELHA ESQUERDA OU DIREITA

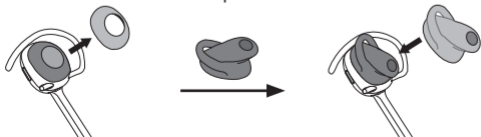
O fone de ouvido pode ser usado na orelha esquerda ou direita. Para trocar de orelha:

1. Remova o encaixe auricular.
2. Vire o fone de ouvido e insira o encaixe auricular.
3. Ajuste a altura do encaixe auricular para cima ou para baixo para melhor ajuste.

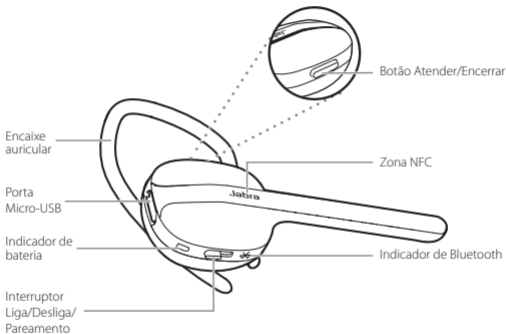


### MUDANDO OS SILICONES

Obtenha o encaixe confortável perfeito mudando os silicones.




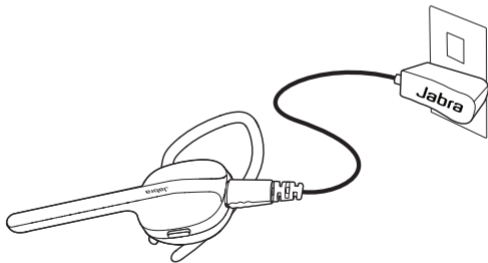
# 3 COMO USAR



## IMPORTANTE

Baixe o Jabra Assist App para o seu dispositivo Android™ ou iOS para melhorar a sua experiência.

	FUNÇÃO	AÇÃO
	Atender/Encerrar chamada	Toque no botão <b>Atender/Encerrar</b> .
	Recusar uma chamada	Pressione e mantenha pressionado (por 1 segundo) o botão <b>Atender/Encerrar</b>
	Redisar o último número	Toque duplo no botão <b>Atender/Encerrar</b> .
	Controles de volume	O volume é ajustado de forma inteligente dependendo do ambiente



Leva aproximadamente duas horas para carregar a bateria por completo

Registro Internacional de Desenho Pendente