

Jabra

BT3010



USER MANUAL

Jabra

ENGLISH

THANK YOU.....	2
ABOUT YOUR JABRA BT3010	2
WHAT YOUR NEW HEADSET CAN DO.....	3
GETTING STARTED.....	4
CHARGE YOUR HEADSET.....	4
TURNING YOUR HEADSET ON AND OFF	5
PAIRING IT WITH YOUR PHONE	5
WEAR IT HOW YOU LIKE IT	7
HOW TO	8
WHAT THE LIGHTS MEAN	9
TROUBLESHOOTING	10
NEED MORE HELP?.....	11
TAKING CARE OF YOUR HEADSET	11
PROTECT YOUR HEARING	11
WARRANTY	13
CERTIFICATION AND SAFETY APPROVALS.....	15
GLOSSARY	17

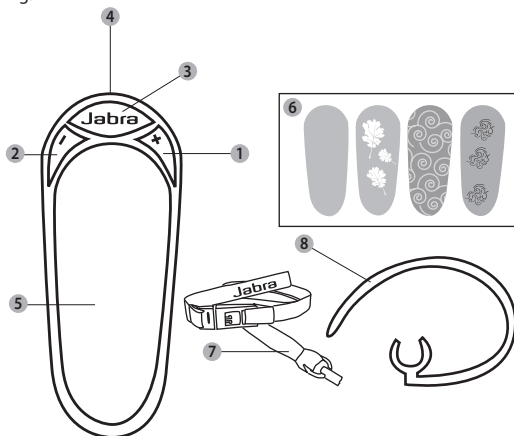
THANK YOU

Thank you for purchasing the Jabra BT3010 Bluetooth® headset. We hope you enjoy it! This instruction manual will get you started and ready to make the most of your headset.

ABOUT YOUR JABRA BT3010

- 1 Volume up (+)
- 2 Volume down (-)
- 3 Light indicator (LED)
Answer/end button
- 4 Charging socket
- 5 Transparent cover
- 6 Design sheet
- 7 Lanyard
- 8 Optional earhook

Fig. 1



WHAT YOUR HEADSET CAN DO

Your Jabra BT3010 lets you do all this:

- Personalize your headset with enclosed designs, or through www.jabra.com
- Answer calls
- End calls
- Adjust volume level
- Reject calls*
- Voice dialing*
- Last number redialing*
- Call waiting*
- Place call on hold*

* Phone dependent

Specifications

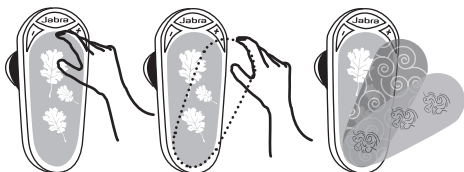
- Talk time up to 8 hours / standby time up to 300 hours
- Rechargeable battery with charging option from AC power supply, USB cable or car charger (USB cable and car charger not included)
- Weight 2/5 oz (11 grams)
- Operating range up to approx. 33 feet (10 meters)
- Headset and hands-free Bluetooth profiles (see glossary)
- Bluetooth version 2.0, EDR and eSCO

Personalizing

Have fun with your new headset: (See fig. 2)

- Gently remove the transparent cover by snapping it off from the top (refer to illustration)
- Remove the old design, and insert a new design sheet and snap the transparent cover on

Fig. 2



GETTING STARTED

You should follow three steps before using your headset

- 1. Charge your headset**
- 2. Activate Bluetooth on your mobile phone (refer to the manual for your Mobile phone)**
- 3. Pair your headset to your mobile phone**

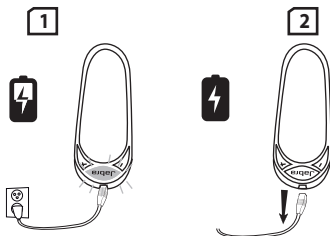
The Jabra BT3010 is easy to operate. The answer/end button on the headset performs different functions depending on how long you press it.

Instruction:	Duration of press:
Tap	Press briefly
Press	Approx: 1 second
Press and hold	Approx: 5 seconds

CHARGE YOUR HEADSET

Make sure that your headset is fully charged for two hours before you start using it. Use the AC power supply to charge from a power socket. When the light indicator (LED) has a solid LED light, your headset is charging. When the solid LED light turns off, it is fully charged. (See fig. 3)

Fig. 3



Use only the charger provided in the box - do not use chargers from any other devices as this may damage your headset.

Please note: The lifetime of the battery will be significantly reduced if your device is left uncharged for a long period. We therefore recommend that you recharge your device at least once a month.

TURNING YOUR HEADSET ON AND OFF

- **Press** the answer/end button until you see a burst of flashes on the indicator light (LED) to turn your headset on.
- **Press and hold** the answer/end button until you see a burst of flashes on the indicator light (LED) to turn the headset off.

Please note that the LED indicator light turns off after 1 minute to save battery. Headset is still active, and light will flash again after tap on the answer/End button or any call activity. To check if the headset is on, tap the answer/end button once – the LED indicator light will flash, if the headset is on.

PAIRING IT WITH YOUR PHONE

Headsets are connected to phones using a procedure called 'pairing'. By following a few simple steps, a phone can be paired with a headset in a matter of minutes. (See fig. 4)

1. Put the headset in pairing mode

- When you turn on your Jabra BT3010 for the first time, the headset will automatically start up on pairing mode – i.e. it is discoverable for your phone. When the headset is in pairing mode the LED is constantly lit.

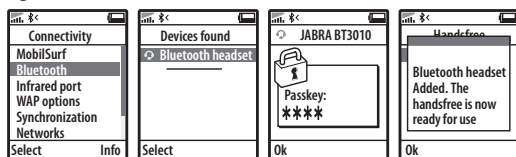
2. Set your Bluetooth phone to 'discover' the Jabra BT3010

- Follow your phone's instruction guide. First make sure that Bluetooth is activated on your mobile phone. Then set your phone to discover the headset. This usually involves going to a 'setup,' 'connect' or 'Bluetooth' menu on your phone and selecting the option to 'discover' or 'add' a Bluetooth device.*

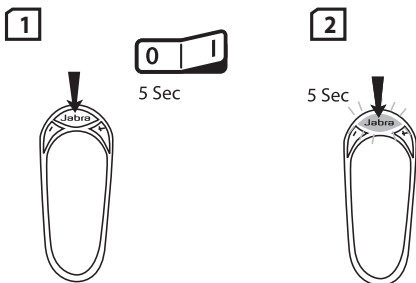
3. Your phone will find the Jabra BT3010

- Your phone will find the headset under name "Bluetooth headset". Your phone then asks if you want to pair with the headset. Accept by pressing 'Yes' or 'OK' on the phone and confirm with the passkey or PIN = 0000 (zeros). Your phone will confirm when pairing is complete.

Fig. 4



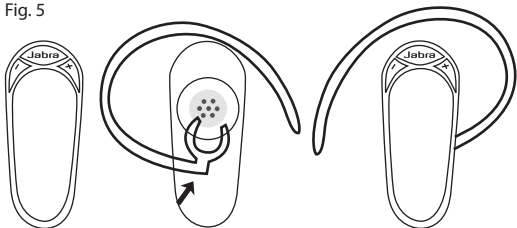
In case of unsuccessful pairing, put the Jabra BT3010 into pairing mode manually. Make sure the headset is off. Press and hold the answer/end button for approximately 5 seconds until the LED has a constant light. The LED will flash before the light is constant – **keep holding down the button until light is constant.**



WEAR IT HOW YOU LIKE IT

The Jabra BT3010 is ready to wear without an earhook – simply insert it in your right or left ear. If you prefer to use the earhook, click it on as shown on the illustration. (See fig. 5)

Fig. 5



For optimal performance, wear the Jabra BT3010 and your mobile phone on the same side of your body or within line of sight. In general, you will get better performance when there are no obstructions between your headset and your mobile phone. (See fig. 6)

Fig. 6



HOW TO...

Answer a call

- Tap the answer/end button on your headset to answer a call.

End a call

- Tap the answer/end button to end an active call.

Make a call

- When you make a call from your mobile phone, the call will (subject to phone settings) automatically transfer to your headset. If your phone does not support this function, tap on the answer/end button on the Jabra BT3010 to receive the call in the headset.

Reject a call*

- Press the answer/end button when the phone rings to reject an in-coming call. Depending on your phone settings, the person who called you will either be forwarded to your voice mail or hear a busy signal.

Activate voice dialing*

- Press the answer/end button. For best results, record the voice-dialling tag through your headset if your phone allows you to do so. Please consult your phone's user manual for more information about using this feature.

Redial last number*

- Double tap the answer/end button.

Adjust sound and volume

- Press the volume up or down (+ or -) to adjust the volume.

Mute/Unmute

- Press the volume up and down (+ or -) at the same time to mute the call (the caller will not hear your voice). To un-mute, press either the volume up or volume down button.

Call waiting and placing a call on hold*

This lets you put a call on hold during a conversation and answer a waiting call.

- Press the answer/end button once to put the active call on hold and answer the waiting call.
- Press the answer/end button to switch between the two calls.
- Tap the answer/end button to end the active conversation.

* Functions marked with * are dependent on your phone supporting these features. Check your phone's user manual for further information.

WHAT THE LIGHTS MEAN

What you see	What this means about your headset
Solid light:	In pairing mode – see Pairing section
Slow single flash:	Connected to phone and in standby mode*
Slow double flash:	Not connected to phone and standby mode*
Quick single flash:	Active on call
Quick double flash:	Incoming/Outgoing call
Triple flash:	Battery low

* BT3010 is equipped with Jabra Discreet Light feature, meaning that light indicator (LED) turns off after 1 min of non-activity. Headset is still active, and light will flash again after a tap on the answer/end button or any call activity.

TROUBLESHOOTING & FAQ

I hear crackling noises

- For the best audio quality, always wear your headset on the same side of the body as your mobile phone.

I cannot hear anything in my headset

- Increase the volume on the headset.
- Ensure that the headset is paired with the phone.
- Make sure that the phone is connected to the headset – if it does not connect either from the phone's Bluetooth menu or by tapping the answer/end button, follow the pairing procedure (refer to pairing section in this user manual).
- You can determine whether your headset is connected to a device by looking at the flashes on the headset after tapping the answer/end button when the headset is on: single slow flashes means that the headset is connected to a device, double slow flashes means that the headset is currently not connected.

I have connection problems

- You may have deleted your headset pairing connection in your mobile phone. Follow the pairing instructions; refer to this section in this user manual.
- You can determine whether your headset is connected to a device by looking at the flashes on the headset after tapping the answer/end button when the headset is on: single slow flashes means that the headset is connected to a device, double slow flashes means that the headset is currently not connected.

Will the JabraBT3010 work with other Bluetooth equipment?

- The Jabra BT3010 is designed to work with Bluetooth mobile phones. It can also work with other Bluetooth devices that are compliant with Bluetooth version 1.1, 1.2 or 2.0 and support a headset and/or hands-free Bluetooth profile.

I cannot use Reject call, Call on hold, Redial or Voice dialling

- These functions are dependent on your phone supporting them. Please check your phone's manual for further details.

NEED MORE HELP?

- 1. Web:** www.jabra.com
(for the latest support info and online User Manuals)
- 2. E-mail:** Tech Support: techsupp@jabra.com
Information: info@jabra.com
- 3. Phone:** 1 (800) 327-2230 (toll-free in USA)
(603) 579-5311 (Canada)

TAKING CARE OF YOUR HEADSET

- Always store the Jabra BT3010 with the power off and safely protected.
- Avoid storage at extreme temperatures (above 45°C/113°F – including direct sunlight – or below -10°C/14°F). This can shorten battery life and may affect operation. High temperatures may also degrade performance.
- Do not expose the Jabra BT3010 to rain or other liquids.

WARNING!

Headsets are capable of delivering sounds at loud volumes and high pitched tones. Exposure to such sounds can result in permanent hearing loss damage. The volume level may vary based on conditions such as the phone you are using, its reception and volume settings, and the environment. Please read the safety guidelines below prior to using this headset.

Safety guidelines

1. Prior to using this product follow these steps:

- Before putting on the headset, turn the volume control to its lowest level,
- Put the headset on, and then
- Slowly adjust the volume control to a comfortable level.

2. During the use of this product

- Keep the volume at the lowest level possible and avoid using the headset in noisy environments where you may be inclined to turn up the volume;
- If increased volume is necessary, adjust the volume control slowly; and
- If you experience discomfort or ringing in your ears, immediately discontinue using the headset and consult a physician.

With continued use at high volume, your ears may become accustomed to the sound level, which may result in permanent damage to your hearing without any noticeable discomfort.

Using the headset while operating a motor vehicle, motorcycle, watercraft or bicycle may be dangerous, and is illegal in some jurisdictions. Check your local laws. Use caution while using your headset when you are engaging in any activity that requires your full attention. While engaging in any such activity, removing the headset from your ear area or turning off your headset will keep you from being distracted, so as to avoid accident or injury.

3. Keep out of reach of children:

- The plastic bags the product and its parts are wrapped in are not toys for children. The bags themselves or the many small parts they contain may cause choking if ingested. Never try to dismantle the product yourself.

None of the internal components can be replaced or repaired by users.

Only authorised dealers or service centres may open the product. If any parts of your product require replacement for any reason, including normal wear and tear or breakage, contact your dealer. Avoid exposing the product to rain or other liquids.

4. ACA TS028 – Ignition of flammable atmospheres

Do not use the Headset in environments where there is a danger of ignition of flammable gases.

WARRANTY

Service and Warranty Information

Limited One (1) - Year Warranty

GN US, inc., warrants this product to be free from defects in materials and workmanship (subject to the terms set forth below) for a period of one (1) year from the date of purchase ("Warranty Period"). During the Warranty Period, GN will repair or replace (at GN's discretion) this product or any defective parts ("Warranty Service"). If repair or replacement is not commercially practicable or cannot be timely made, GN may choose to refund to you the purchase price paid for the affected product. Repair or replacement under the terms of this warranty does not give right to any extension or a new beginning of the period of warranty.

Claims under the Warranty

To obtain Warranty Service, please contact the GN dealer from which you purchased this product or visit www.jabra.com for further information about customer support. You will need to return this Product to the dealer or ship it to the dealer or to GN (if so indicated on www.jabra.com) in either its original packaging or packaging affording an equal degree of protection. You will bear the cost of shipping the product to GN. If the Product is covered by the warranty, GN will bear the cost of shipping product back to you after the completion of service under this warranty. Return shipping will be charged to you for products not covered by the warranty or requiring no warranty repair.

The Following information must be presented to obtain Warranty Service: (a) the product, and (b) proof of purchase, which clearly indicates the name and address of the seller, the date of purchase and the product type, which is evidence that this product is within the Warranty Period. Please further include (c) your return address. (d) daytime telephone number, and (e) reason for return. As part of GN/Jabra's efforts to reduce environmental waste you understand that the product may consist of reconditioned equipment that contains used components, some of which have been reworked. The used components all live up to GN/Jabra's high quality standards and comply with the GN product performance and reliability specifications. You understand that replaced parts or components will become the property of GN.

Limitation of Warranty

This warranty is only valid for the original purchaser and will automatically terminate prior to expiration if this product is sold or otherwise transferred to another party. The warranty provided by GN in this statement applies only to products purchased for use, and not for resale. It does not apply to open box purchases, which are sold "as is" and without any warranty. Specifically exempt from warranty are limited-life consumable components subject to normal wear and tear, such as microphone windscreens, ear cushions, modular plugs, ear tips, decorative finishes, batteries, and other accessories. This warranty is invalid if the factory-applied serial number, date code label, or product label has been altered or removed from this product. This Warranty does not cover cosmetic damage or damage due to misuse, abuse, negligence, Acts of Nature, accident, disassembling or modification of, or to any part of, the product. This Warranty does not cover damage due to improper operation, maintenance or installation, or attempted repair by anyone other than GN or a GN dealer which is authorized to do GN warranty work. Any unauthorized repairs will void this Warranty

REPAIRS OR REPLACEMENTS AS PROVIDED UNDER THIS WARRANTY ARE THE EXCLUSIVE REMEDY OF THE CONSUMER. GN SHALL NOT BE LIABLE FOR ANY INCIDENTAL OR CONSEQUENTIAL DAMAGES FOR BREACH OF ANY EXPRESS OR IMPLIED WARRANTY ON THIS PRODUCT. EXCEPT TO THE EXTENT PROHIBITED BY LAW, THIS WARRANTY IS EXCLUSIVE AND IN LIEU OF ALL OTHER EXPRESS AND IMPLIED WARRANTIES WHATSOEVER, INCLUDING BUT NOT LIMITED TO THE WARRANTY OF MERCHANTABILITY AND FITNESS FOR A PRACTICAL PURPOSE.

NOTE! This warranty gives you specific legal rights. You may have other rights which vary from location to location. Some jurisdictions do not allow the exclusion or limitation of incidental or consequential damages or implied warranties, so the above exclusions may not apply to you. This warranty does not affect your legal (statutory) rights under your applicable national or local laws.

CERTIFICATION AND SAFETY APPROVALS

FCC

This device complies with part 15 of the FCC Rules. Operation is subject to the following two conditions: (1) This device may not cause harmful interference, and (2) this device must accept any interference received, including interference that may cause undesired operation.

Users are not permitted to make changes or modify the device in any way. Changes or modifications not expressly approved by Jabra (GN US, Inc.) will void the user's authority to operate the equipment.

This equipment has been tested and found to comply with the limits for a Class B digital device, pursuant to part 15 of the FCC Rules. These limits are designed to provide reasonable protection against harmful interference in a residential installation. This equipment generates, uses and can radiate radio frequency energy and, if not installed and used in accordance with the instructions, may cause harmful interference to radio communications. However, there is no guarantee that interference will not occur in a particular installation. If this equipment does cause harmful interference to radio or television reception, which can be determined by turning the equipment off and on, the user is encouraged to try to correct the interference by one or more of the following measures:

- Reorient or relocate the receiving antenna.
- Increase the separation between the equipment and receiver.
- Connect the equipment into an outlet on a circuit different from that to which the receiver is connected.
- Consult the dealer or an experienced radio/TV technician for help.

The device and its antenna must not be co-loaded or operating in conjunction with any other antenna or transmitter.

Industry Canada

Operation is subject to the following two conditions: (1) This device may not cause interference and (2) This device must accept any interference, including interference that may cause undesired operation of the device.

The term "IC:" before the certification/registration number only signifies that registration was performed based on a Declaration of Conformity indicating that Industry Canada technical specifications were met. It does not imply that Industry Canada approved the equipment.

CE

This product is CE marked according to the provisions of the R & TTE Directive (99/5/EC).

Hereby, GN A/S, declares that this product is in compliance with the essential requirements and other relevant provisions of Directive 1999/5/EC.

For further information please consult <http://www.jabra.com>

Bluetooth

The Bluetooth® word mark and logos are owned by the Bluetooth SIG, Inc. and any use of such marks by Jabra is under license. Other trademarks and trade names are those of their respective owners.

GLOSSARY

- 1. Bluetooth** is a radio technology that connects devices, such as mobile phones and headsets, without wires or cords over a short distance (approx. 33 feet). Get more information at www.bluetooth.com
- 2. Bluetooth profiles** are the different ways that Bluetooth devices communicate with other devices. Bluetooth phones support either the headset profile, the hands-free profile or both. In order to support a certain profile, a phone manufacturer must implement certain mandatory features within the phone's software.
- 3. Pairing** creates a unique and encrypted link between two Bluetooth devices and lets them communicate with each other. Bluetooth devices will not work if the devices have not been paired.
- 4. Passkey or PIN** is a code that you enter on your mobile phone to pair it with your Jabra BT3010. This makes your phone and the Jabra BT3010 recognize each other and automatically work together.
- 5. Standby mode** is when the Jabra BT3010 is passively waiting for a call. When you 'end' a call on your mobile phone, the headset goes into standby mode.



Dispose of the product according to local standards and regulations.

www.jabra.com/weee

© 2007 GN US, inc. All rights reserved. Jabra® is a registered trademark of GN A/S. All other trademarks included herein are the property of their respective owners. The Bluetooth® word mark and logos are owned by the Bluetooth SIG, Inc. and any use of such marks by GN US, inc. is under license. (Design and specifications subject to change without notice).

www.jabra.com

MADE IN CHINA



TYPE: OTE1 / OTE2

32-00372 B

Jabra