

Jabra[®]
YOU'RE ON

BRAGE



User Manual

Brage.com

CONTENTS

1. WELCOME	3
2. OVERVIEW	4
3. HOW TO WEAR.....	5
3.1 HEIGHT ADJUSTMENT	5
3.2 FOLDABLE HINGES	6
4. HOW TO CHARGE	7
4.1 BATTERY STATUS	7
5. HOW TO CONNECT	8
5.1 CONNECT TO A BLUETOOTH DEVICE	8
5.2 CONNECT TO AN NFC DEVICE	9
5.3 CONNECT TO 3.5 MM JACK CONNECTOR	10
5.4 CONNECT TO USB	11
6. HOW TO USE	12
6.1 TURN HEADSET ON/OFF	15
6.2 MULTIPLE CALL HANDLING	15
6.3 VOICE GUIDANCE	16
7. SUPPORT	17
7.1 FAQ	17
7.2 HOW TO CARE FOR YOUR HEADSET	18
8. TECHNICAL SPECIFICATIONS	19

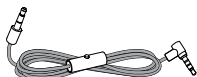
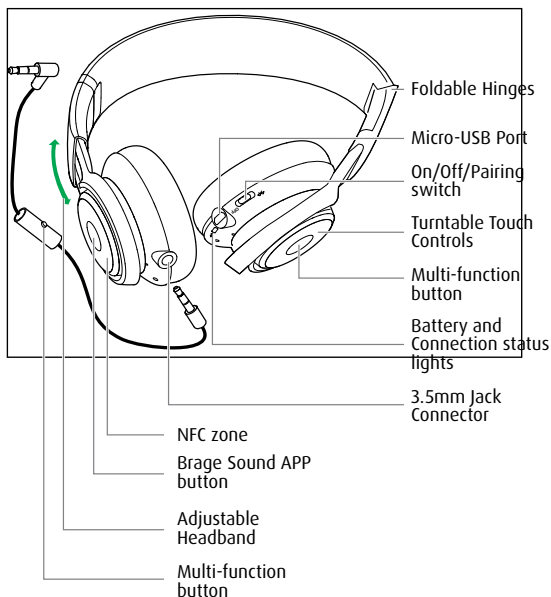
1. WELCOME

Thank you for purchasing the Brage. We hope you will enjoy it!

BRAGE FEATURES

- High definition Dolby® Digital Plus enhanced sound via exclusive Brage Sound App.
- Optimized sound excellence with portable devices.
- Turntable Touch Control for easy music and call management.
- Life proof - tough, shatterproof and constructed for ultimate portability.
- Premium comfort for extended wear: memory foam ear cups and padded headband.
- Foldable design for quick and compact storage.
- Superior call quality – Noise Blackout™ with dual mic technology.
- NFC for easy pairing.
- Detachable corded option for when you need to be wired.
- Connects with all Bluetooth® ready devices – phones, computers, tablets and more.

2. OVERVIEW

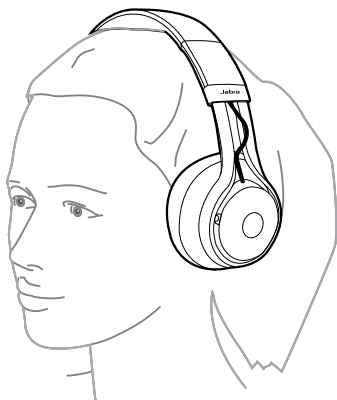


3.5mm audio cable



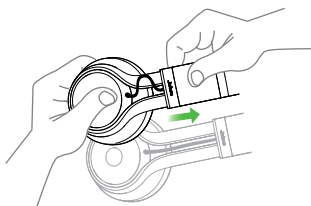
Micro-USB cable

3. HOW TO WEAR



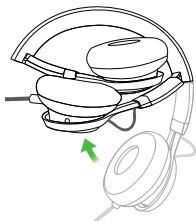
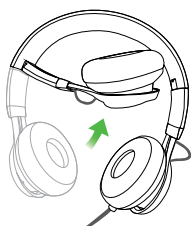
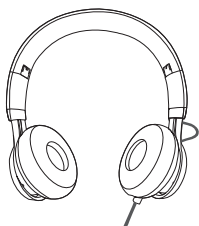
3.1 HEIGHT ADJUSTMENT

Get the perfect fit by adjusting the headband, as illustrated.



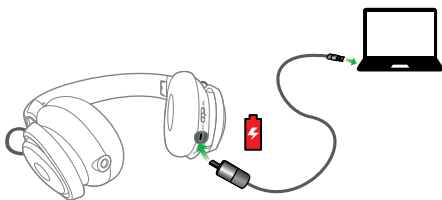
3.2 FOLDABLE HINGES

The headset can be folded when not in use.






4. HOW TO CHARGE

Plug the headset into any available USB port on your PC using the micro-USB cable.



4.1 BATTERY STATUS

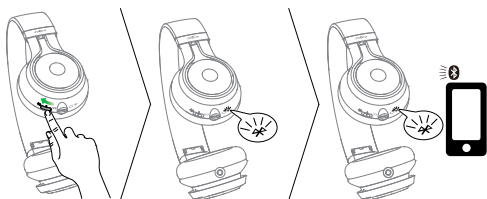
Tap the Multi-function button when not on a call to see the battery status. It takes 2-4 hours to fully charge the headset.

LED	COLOR	BATTERY LEVEL
	Green	Medium/High
	Red	Low
	Flashing red	Critically low

5. HOW TO CONNECT

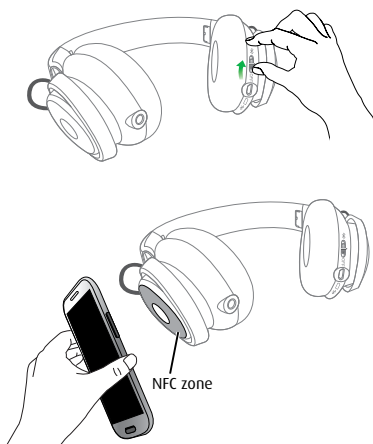
5.1 CONNECT TO A BLUETOOTH DEVICE

1. Hold the **On/Off/Pairing** switch in the Pairing position for 3 secs.
2. Pairing mode will be announced in the headphones, and the Bluetooth light will flash blue.
3. Follow the voice-guided pairing instructions to pair to your Bluetooth device.



5.2 CONNECT TO AN NFC DEVICE

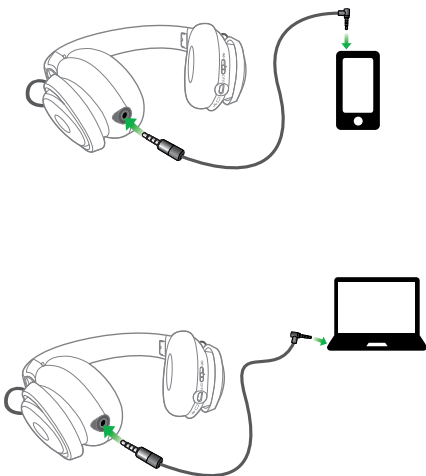
1. Turn the on (set the **On/Off/Pairing** switch to the **On** position).
2. Hold an NFC device against the NFC zone of the headphones (left earcup).



NOTE: Different NFC devices have NFC implemented in different ways. The size and sensitivity of the NFC zone may vary between devices.

5.3 CONNECT TO 3.5 MM JACK CONNECTOR

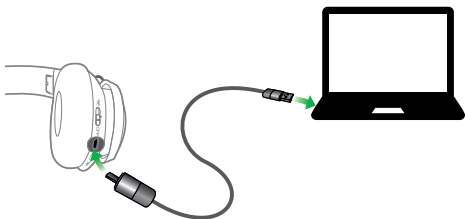
Connect the headset to a 3.5 mm jack connector on your mobile device or PC using the supplied music cable.



NOTE: Bluetooth and headset connections are disabled when connected to the 3.5 mm Jack Connector.

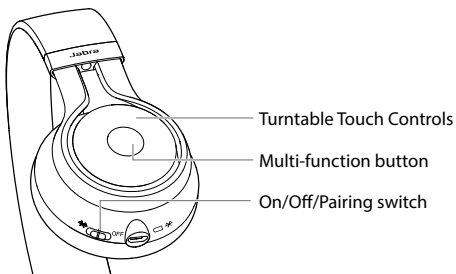
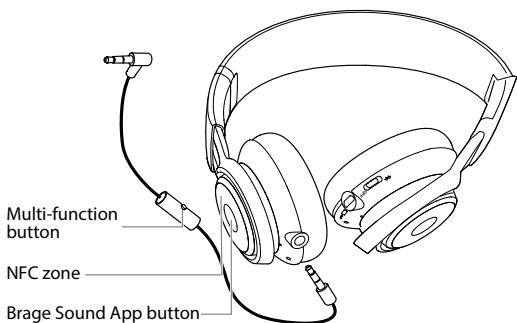
5.4 CONNECT TO USB

Connect the headset to a USB slot or PC using the supplied micro-USB cable.



NOTE: It is possible to connect to a mobile device wirelessly and to your PC via USB at the same time.

6. HOW TO USE



WIRELESS USE - MUSIC



Play/pause
music

Tap the **Multi-function** button



Adjust
speaker
volume

Swipe a finger in a circular
motion on the **Turntable Touch
Controls**



Skip music
tracks

Double-tap the front or back of
the **Turntable Touch Controls** to
skip track forwards or backwards

WIRELESS USE - CALLS

Answer/
end call

Tap the **Multi-function** button



Reject call

Press and hold (1 sec) the
Multi-function button

Redial last
number

Double-tap the **Multi-function**
button.



Brage
Sound
App

Tap the **Brage Sound App** button
(left earcup) to launch the Brage
Sound App on your connected
device (if installed)

WIRED USE - MUSIC (PHONE DEPENDENT)



Play/pause
music

Tap the **Multi-function** button



Skip music
tracks

Double-tap/triple-tap the
Multi-function button on the
cord

WIRED USE - CALLS (PHONE DEPENDENT)



Answer/
end call

Tap the **Multi-function** button

Reject call

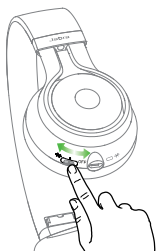
Press and hold (1 sec) the
Multi-function button

Redial last
number

Double-tap the **Multi-function**
button.

6.1 TURN HEADSET ON/OFF

Set the **On/Off/Pairing** switch to **On** or **Off**.



6.2 MULTIPLE CALL HANDLING

The headset can accept and handle multiple calls simultaneously.



Put current call on hold and answer incoming call

Press (2 secs) the **Multi-function** button

Switch between held call and active call

Press (2 secs) the **Multi-function** button



Reject incoming call

Double-tap the **Multi-function** button

6.3 VOICE GUIDANCE

WHAT YOU HEAR

To connect Brage, go to the Bluetooth menu on your phone and select it from the list.

Connected

Disconnected

Connection cancelled

2 devices connected

No device connected

Battery level low

Sound prompts off

Sound prompts on

Redialing

7. SUPPORT

7.1 FAQ

Q I hear crackling noises

A Bluetooth is a radio technology that is sensitive to objects between the headset and the connected device. Ensure the headset and the connected device are within range (up to 10 meters or 30 feet).

Q I cannot hear anything

A - Increase the speaker volume.
- Ensure that the headset is connected to a device.

Q I am having Bluetooth connection problems

A Check your mobile device's Bluetooth menu and delete/forget the headset. Re-connect the headset to your Bluetooth device following the Bluetooth connection instructions.

Q Will the headset support other Bluetooth equipment?

A The headset is designed to work with Bluetooth mobile devices. It can also support other Bluetooth devices that can support a headset, hands-free and/or advance audio distribution profile.

7.2 HOW TO CARE FOR YOUR HEADSET

- Always store the headset with the power off and safely protected.
- Avoid storage at extreme temperatures (above 70°C/158°F or below -40°C/-40°F). This can shorten battery life and may affect operation. High temperatures may also degrade performance.
- Do not expose the headset to rain or other liquids.

8. TECHNICAL SPECIFICATIONS

TOPIC	DESCRIPTION
Weight:	240 grams
Dimensions:	H 178.8 mm x W 160.1 mm x L 73 mm
Microphone:	Omni-directional dual microphone
Speaker:	40 mm
Operating range:	Up to 10 meters
Bluetooth version:	3.0
Paired devices:	Up to 8 devices, connected to 2 at same time
Supported Bluetooth profiles:	Headset profile v1.2, hands free profile v1.6, A2DP v1.2, AVRCP v1.4
Talk time:	Up to 12 hours
Standby time:	Up to 10 days
Operating temperature:	-10° C to 55° C (14 F to 131 F)
Storage temperature:	-40° C to 65° C (-40 F to 149 F)
Pairing passkey or PIN:	0000