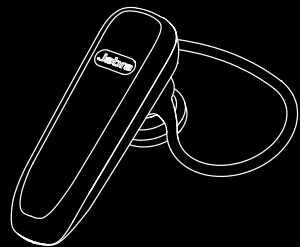
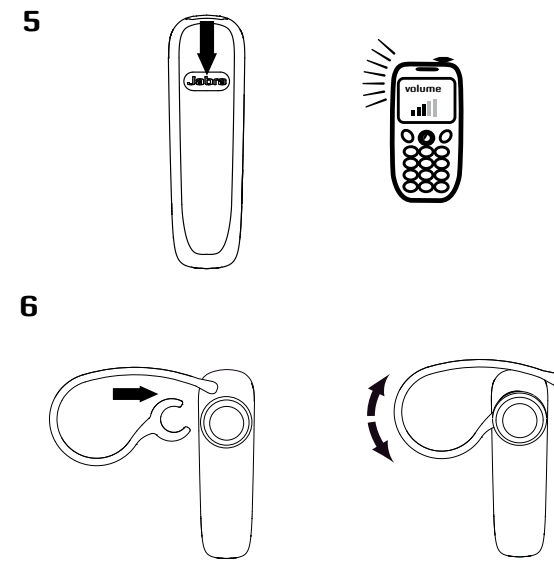
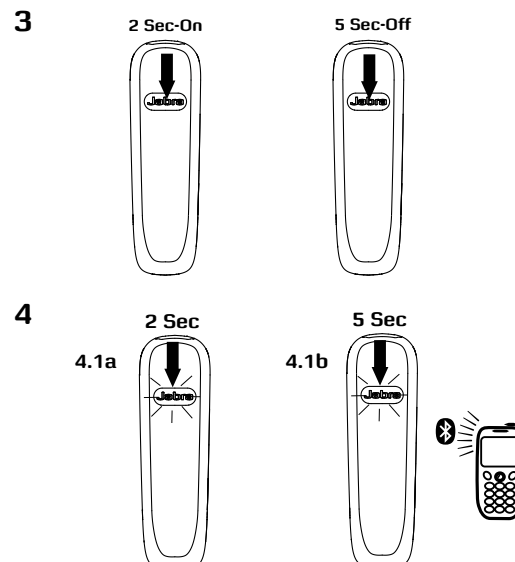
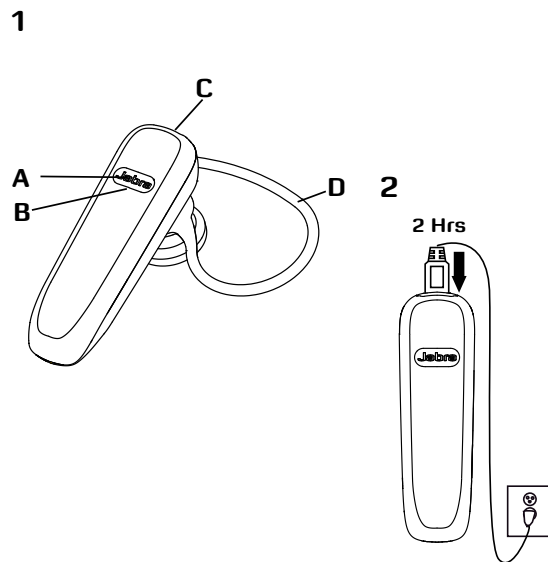


Jabra® BT2045



Quick start manual

www.jabra.com



Visit www.jabra.com/BT2045 for full user manual

PLEASE NOTE: Before using your new Jabra headset, you must fully charge it and set it up by 'pairing it' with your selected *Bluetooth*® device.

1 ABOUT YOUR JABRA BT2045

- A Answer/end button, on/off button**
- B LED light**
- C Charging socket**
- D Earhook**

2 CHARGE YOUR HEADSET

While charging the headset, the LED light will show solid light and when the headset is fully charged, the LED light will turn off.

3 TURNING YOUR HEADSET ON AND OFF

Press on/off button to turn the headset on or off.

4 PAIRING THE HEADSET WITH YOUR PHONE

4.1.a First time pairing:

Turn headset on - automatic pairing mode when LED light is lit solid.

4.1.b Later pairing:

Turn headset off. Press and hold on/off button for approximately 5 sec until LED light is lit solid.

4.2. Activate *Bluetooth*® on your phone.

4.3. Search for *Bluetooth*® devices and select Jabra BT2045.

4.4. Press 'OK' on the phone and if asked confirm with PIN code 0000 (4 zeros).

5 USING YOUR HEADSET

Answer a call

- Tap (less than 1 sec) the answer/end button on your headset to answer a call.

End a call

- Tap the answer/end button to end an active call.

Make a call

- The call will automatically transfer to your headset*. If not, tap the answer/end button.

Reject a call *

- Press (approx 2 sec) the answer/end button.

Activate voice dialing *

- Press the answer/end button. For best results, record the voice-dialing tag through your

headset.

Redial last number *

- Double tap the answer/end button when the headset is on and not used.

Volume control *

- Use the mobile phone to control volume on your headset.

6 WEARING STYLE

Wear the Jabra BT2045 with or without an earhook. To wear with earhook, please click on for right or left ear wearing and rotate to improve fit.

* Phone dependent

AVISO: Antes de utilizar su nuevo auricular Jabra BT2035, deberá cargarlo completamente 2 horas aproximadamente y configurarlo para "sincronizarlo" su dispositivo *Bluetooth*® seleccionado.

1 ACERCA DE SU JABRA BT2035

- A Botón responder/ fin, botón On/Off**
- B LED luminoso**
- C Enchufe de carga**
- D Gancho para la oreja**

2 CARGAR SU AURICULAR

Mientras se carga el auricular, el LED luminoso permanecerá encendido y tras terminar la carga, se apagará.

3 CONECTAR Y DESCONECTAR SU AURICULAR

Presione el botón de encendido/apagado para encender o apagar el altavoz.

4 SINCRONIZAR EL AURICULAR CON SU TELÉFONO

Sincronizar por primera vez:
Conecte el auricular - Modo de sincronización automático cuando el LED esté constantemente iluminado.

1. Apague el auricular. Pulse y mantenga pulsado hasta que la luz se ilumine constantemente.
2. Active *Bluetooth*® en su teléfono.

3. Busque dispositivos *Bluetooth*® y seleccione *Bluetooth* headset.

4. Pulse "OK" en el teléfono y confirme el código PIN = 0000 (4 ceros).

5 CÓMO USAR SU AURICULAR

Responder una llamada

- Pulse (menos de 1 segundo) el botón responder/fin de su auricular para responder una llamada.

Terminar una llamada

- Pulse el botón responder/fin de su auricular para finalizar una llamada activa.

Realizar una llamada

- La llamada se transferirá automáticamente a su auricular*. Si no es así, pulse el botón responder/fin.

Rechazar una llamada *

- Pulse (aproximadamente 1 segundo) el botón responder/fin.

Activar marcación por voz *

Si desea el manual completo del usuario, visite www.jabra.com/BT2035

- Pulse el botón responder/fin. Para obtener mejores resultados, grabe la marcación por voz con su auricular.

Remarcar el último número llamado *

- Pulse dos veces el botón responder/fin cuando el auricular esté conectado y no en uso.

Control de volumen *

- Utilice el teléfono móvil para controlar el volumen de su altavoz.

6 CÓMO LLEVARLO

Puede llevar el Jabra BT2035 con o sin gancho para la oreja.

Para llevarlo con el gancho para la oreja, colóquelo en la oreja izquierda o derecha.

NEED MORE HELP?

Access website www.jabra.com/BT2045 for full user manual

CUSTOMER CONTACT DETAILS:

www.jabra.com/nasupport

(for the latest support info and online User Manuals)

1 (800) 327-2230 (U.S.)

1 (800) 489-4199 (Canada)

A BRAND BY



© 2011 GN Netcom A/S (North America: GN Netcom US, Inc.). All rights reserved. Jabra® is a registered trademark of GN Netcom A/S. All other trademarks included herein are the property of their respective owners. The *Bluetooth*® word mark and logos are owned by the *Bluetooth* SIG, Inc. and any use of such marks by GN Netcom A/S is under license. (Design and specifications subject to change without notice).

Made in China
TYPE: OTE9



www.jabra.com

GN Netcom Inc. • 77 Northeastern Boulevard • Nashua, NH 03062 • USA

For more information please visit
www.jabra.com

81-033365 A



Jabra EASYGO Easy to use, wear and enjoy.

What's unique about the JABRA EASYGO?

- Spoken battery and connection status
- Connects to 2 devices simultaneously
- Crystal clear sound and voice (DSP)



CHARGING KIT

What's unique about Jabra Charging Kit?

- Upgrade your Jabra *Bluetooth*® headset with 2 charging options
- Car charger and USB charger for increased ease of use