

USER GUIDE

ReSound Unite™ Phone Clip



ReSound



rediscover hearing

Welcome

Congratulations on your purchase of a ReSound Unite Phone Clip.

ReSound Unite Phone Clip will allow you to wirelessly connect your ReSound hearing aids to Bluetooth-enabled mobile phones. This enables clear and hassle-free phone connectivity, whether you are at home, in the office or on the move.

Please read this manual carefully to fully benefit from the ReSound Unite Phone Clip. Ask your hearing care professional if you have any questions.

For further information you can also check the www.resound.com/unite web site.

For your safety, carefully read the chapter Important Information, on pages 24-30

FCC ID:X26BTB-1

Statement:

This device complies with Part 15 of the FCC Rules.

Operation is subject to the following two conditions: (1) this device may not cause harmful interference, and (2) this device must accept any interference received, including interference that may cause undesired operation.

Note: This equipment has been tested and found to comply with the limits for a Class B digital device, pursuant to part 15 of the FCC Rules. These limits are designed to provide reasonable protection against harmful interference in a residential installation. This equipment generates, uses and can radiate radio frequency energy and, if not installed and used in accordance with the instructions, may cause harmful interference to radio communications.

However, there is no guarantee that interference will not occur in a particular installation. If this equipment does cause harmful interference to radio or television reception, which can be determined by turning the equipment off and on, the user is encouraged to try to correct the interference by one or more of the following measures:

- Reorient or relocate the receiving antenna
- Increase the separation between the equipment and receiver.
- Connect the equipment into an outlet on a circuit different from the receiver is connected.
- Consult the dealer or an experienced radio/TV technician for help.

Changes or modifications can void the user's authority to operate the equipment.

Intended use

ReSound Unite Phone Clip is intended to enable ReSound wireless hearing instrument users to better follow phone conversations. The essential performance of the ReSound Unite Phone Clip is to transfer signals between a phone with Bluetooth capabilities and a ReSound wireless hearing instrument.

List of countries

Products are intended for sale in countries within European Economic Area as well as Switzerland.

National restrictions:

Norway: You are not allowed to operate the equipment within 20 km of the centre of Ny Ålesund.

This product is in compliance with the following regulatory standards:

In EU: The device conforms to the Essential Requirements according to - Annex I of Council Directive 93/42/EEC for medical devices (MDD) and essential requirements and other relevant provisions of Directive 1999/5/EC (R&TTE). The declaration of conformity may be consulted at www.resound.com

In US: FCC CFR 47 Part 15, subpart C, section 15.247 and 15.249.

Other identified applicable international regulatory requirements in countries outside EU and US. Please refer to local country requirements for these areas.

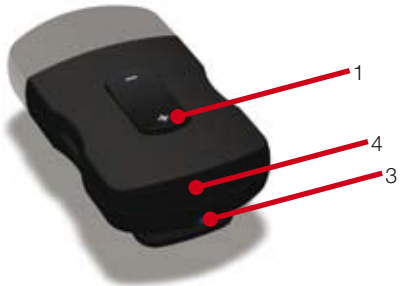
The product is categorized as receiver class 2 according to EN 300 440.

Contents

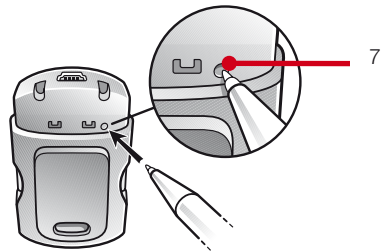
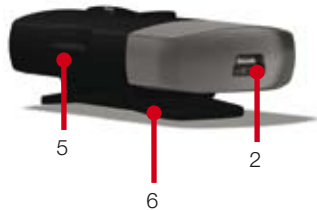
Description	8-9
Getting Started	10
ON and OFF	12
Bluetooth Pairing.	13
Basic Use	16
Volume Control	18
Operating Time	18
Wearing Your ReSound Unite Phone Clip	19
Light indicators	21
Introduction to Bluetooth	22-23
Important Information	24-30
Technical specifications	31
Warranty	32
Troubleshooting guide	34-39
Notes	40-41

Description

- 1 Volume control
- 2 Mini-USB for charging
- 3 LED (Light Emitting Diode) indicator
- 4 Own voice microphone inlet



- 5 Multifunctional button
- 6 Clip
- 7 Pairing button (behind cover)



Getting Started

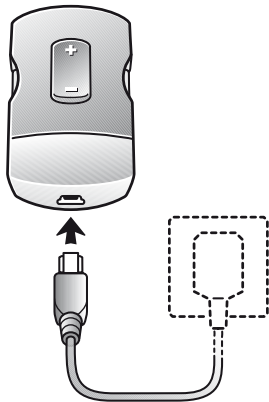
Charging the Battery

Before using your ReSound Unite Phone Clip, you need to fully charge the rechargeable battery. To charge it, plug the charging cable as shown in the picture below. Then plug the other end of the charging cable into a power outlet.

During the charging process, the LED indicator will show a solid red light. A solid green light will indicate the fully charged status.

Charging an empty battery typically takes about 3 hours. It is safe to leave the charger connected overnight – the battery cannot be overcharged.

- When charging your ReSound Unite Phone Clip for the first time, leave it to charge for at least 3 hours, even if the battery indicator turns into a solid green light earlier.
- For safety reasons, recharge the battery only with chargers supplied by ReSound.

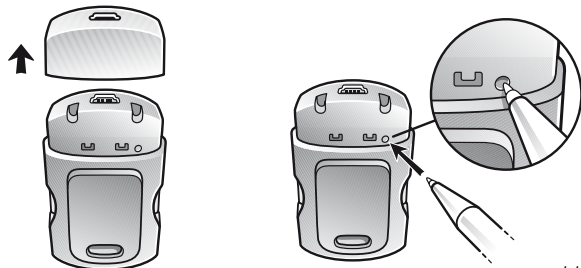


Pairing to hearing instruments



Note! The following information is intended primarily for your hearing care professional, who in most cases will complete the tasks that are necessary before the ReSound Unite Phone Clip can be used with your hearing instruments. However, the process is designed to be simple and should be easily accomplished by almost anyone.

1. Make sure ReSound Unite Phone Clip is turned on. Your hearing instruments must be off – open the battery door.
2. With the tip of a pen or similar object, press the small pairing button on the back of your ReSound Unite Phone Clip device hidden by the bottom cover (see picture below). Press shortly until the LED indicator turns to solid blue. Your ReSound Unite Phone Clip will remain in pairing mode for 30 seconds.



3. While pairing mode is activated, close the battery doors of both hearing aids and make sure they are ON. A successful pairing will be indicated by an audible melody played in both hearing aids. You are now ready to use the ReSound Unite Phone Clip!

ON and OFF

To turn ON your ReSound Unite Phone Clip, press and hold the multifunctional button (5 on page 9) for about 1 second until you see the LED indicator displaying a solid blue light. The blue light will be on for 4 seconds.

To turn it OFF, press and hold the multifunctional button for about 3 seconds until the LED indicator flashes quickly 4 times and then goes dark.

Bluetooth Pairing

If your mobile phone is Bluetooth-enabled and supports the appropriate profiles, it can communicate with the ReSound Unite Phone Clip only after completing two simple procedures: pairing and connecting.

The pairing procedure allows you to control which Bluetooth devices are permitted to communicate with each other. It needs to be completed only once for each device you wish to use with your ReSound Unite Phone Clip.

You can pair up to 8 Bluetooth devices with the Phone Clip, but only 1 Bluetooth device can be connected at a time.

The pairing procedure is described in the section which follows. Once a mobile phone is permitted to communicate with the ReSound Unite Phone Clip by the pairing procedure, the connection procedure configures the device to actually output its audio signal over the Bluetooth connection. This procedure is also described in the section which follows.

Pairing to mobile phone

The pairing procedure is controlled by your mobile phone. Different mobile phones have different menu structures. You should therefore refer to your mobile phone's manual if you cannot complete the pairing procedure with the generic steps described here.


1. The ReSound Unite Phone Clip is OFF. Place your mobile phone next to the Phone Clip, and make sure your phone is ON.
Press and hold the multifunctional button on the Phone Clip for 7 seconds. The LED will now be solid blue for two minutes indicating that Bluetooth pairing mode is active. The ReSound Unite Phone Clip will be in Bluetooth pairing mode only in the first two minutes after having been turned ON.
2. Find the connectivity settings of your phone. Look for the “Bluetooth” feature in the main menu or one of the submenus, such as “Connectivity”.
3. On your mobile phone, ensure that the Bluetooth is turned ON.
4. On the mobile phone choose to search for Bluetooth devices.
5. Your mobile phone should present a list of Bluetooth devices discovered. Select “Hearing Aid Phone” from this list.
6. Your mobile phone may then ask you to enter a passcode. If so, enter “0000” (four zeros).

Your ReSound Unite Phone Clip should now be paired to your mobile phone. Some mobile phones may ask which Bluetooth service you wish to enable. enable, select “Headset”.

Connecting

Once your mobile phone and ReSound Unite Phone Clip are paired, the mobile phone needs to be connected before it will actually send the appropriate audio signals.

This function should also appear in your mobile phone’s “Bluetooth” menu, usually under a list of “Paired Devices”. In that list, highlight your ReSound Unite Phone Clip and select “Connect”.

- When your ReSound Unite Phone Clip and mobile phone are connected, you may see a headset symbol on the main screen of your mobile phone, similar to this: 

The connection between the ReSound Unite Phone Clip and the mobile phone will be maintained for as long as both devices are turned ON and remain within range of each other. If either device is switched OFF or moves out of range, you may have to perform the connection procedure again.

On some phone you can configure “Automatic Reconnection”. We recommend that you do so if the feature is available. Refer to the user guide of your mobile phone for instructions on how to do this if supported.

Basic Use

Accept and Reject Calls

Turn the device ON. When a call is received on your mobile phone, the Bluetooth indicator will flash and after a certain delay you will hear the ringing tone in your hearing instruments.

To accept the incoming call, briefly press the multifunctional button on your ReSound Unite Phone Clip. If you are wearing two hearing instruments, the caller's voice will be streamed to both of them.

You can also accept calls by pressing the accept button on your mobile phone.

- If desired, your hearing care professional can set your hearing aids' microphones to remain ON even in the event of an incoming call, so to mix the phone streamed signal with external sound.
- In case you are also using a ReSound Unite TV (optional), please notice that mobile phone calls will always take priority over other audio sources. In the event of an incoming phone call, the ReSound Unite TV will be temporarily stopped. It will be automatically resumed once the phone call has been terminated.

To reject incoming calls press the multifunction button twice on the Phone Clip.

You can also reject calls by pressing the reject button on your mobile phone.

Making a Call

Initiating a phone call is not any different with or without ReSound Unite Phone Clip: Simply use the mobile phone keyboard to enter or select the number to dial.

If connected, the phone streaming mode will be activated automatically, and you will hear the ringing tones in the hearing instruments

Ending a Call

To end a call via your ReSound Unite Phone Clip, briefly press the multifunctional button. The call will terminate and your hearing instruments will return to the last used program.

You can also end calls by pressing the appropriate button on your mobile phone.

Transfer a Call

You can transfer back a call from the ReSound Unite Phone Clip to your mobile phone by briefly pressing the multifunctional button during an active call.

Volume Control

Your ReSound Unite Phone Clip has an easy to operate volume control (1 on page 8) for increasing or decreasing the loudness of the streamed signal.

Depending on the phone, you can also utilize the volume control that is built in your mobile phone.

It is also possible to use the ReSound Unite Remote Control (optional) to adjust the volume.

Operating Time

Battery consumption and the operating time of your ReSound Unite Phone Clip depend greatly on the usage of the device.

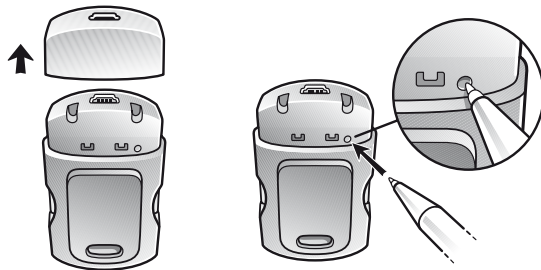
Your ReSound Unite Phone Clip battery can be recharged hundreds of times. If the operating time reduces substantially, please contact your hearing care professional.

Wearing Your ReSound Unite Phone Clip

Clip your ReSound Unite Phone Clip on your sweater, jacket or other clothing so that the microphone inlet faces upwards. Keep the device within a range of 10-30cm from your mouth. You may also clip it on to the sun visor in your car.

Reset the Phone Clip

With the tip of a pen or similar object, press the small pairing button on the back of your ReSound Unite Phone Clip device hidden by the bottom cover (see picture below). Keep pressed for at least 10 seconds and when released, the device is reset.



Light indicators

The Light indicator (3 on page 8) on your ReSound Unite Phone Clip serves as a multipurpose user interface, providing information on the status of your device.

LED indicator		ReSound Unite Phone Clip status
Mode	Condition	
Pairing	Solid Blue for 20 seconds	Ready for pairing with hearing instruments
	Solid Blue for 2 minutes	Ready for pairing with Bluetooth phone
Charging	Solid Red	Charging
	Solid Green	Fully charged
Normal	Flashes Blue twice every 2 seconds	Incoming call or call connected
	Flashing Red once every 5 seconds	Battery low
	Flashes blue 2 times after pressing multifunctional button	No call pending
	Off	None of the normal modes are present, or Power is Off

Introduction to Bluetooth

What is Bluetooth?

Bluetooth provides a way for devices like mobile phones to communicate wirelessly.

First, check whether the phone you wish to use offers Bluetooth connectivity. Look for the following symbol on the device or its user guide.



Second, the range of possible applications on a Bluetooth-enabled device is defined by “profiles”. The device you wish to use with your ReSound Unite Phone Clip must support the appropriate Bluetooth profiles.

To receive or place phone calls your mobile phone must support either the “handsfree” or the “headset” profile. Many, but not all mobile phones support these Bluetooth profiles. Look for this information in your mobile phone user guide.

Bluetooth Operating Range

In free air, your ReSound Unite Phone Clip supports Bluetooth operation up to a range of approximately 10 meters. Line-of-sight between the devices is not required. However, the following factors may affect the maximum range:

- Interference in the environment
- The mobile phone which you are connecting to may support a more limited range than the 10 meters supported by the ReSound Unite Phone Clip

If your mobile phone moves out of range, the connection will be terminated. If the device is then moved again within the range, the ReSound Unite Phone Clip will attempt to re-establish connection. Whether it achieves to do so will depend on delay since the link was broken and on the mobile phone properties.

Important Information



Maintenance and Care

- Clean the ReSound Unite Phone Clip using a damp cloth. Never use household cleaning products (washing powder, soap etc...) or alcohol to clean the device
- When ReSound Unite Phone Clip is not in use, turn it OFF and store it safely
- Protect ReSound Unite Phone Clip from excessive moisture (bathing, swimming) and heat (radiator, car dashboard). Protect it from excessive shock and vibration.
- Protect the microphone and charger inlets from debris and dirt. If necessary, use the cleaning brush provided with your hearing instruments to clean these areas.

General warnings



- Keep this device out of reach of children
- ReSound Unite Phone Clip uses low-powered digitally coded transmissions in order to communicate with other wireless devices. Although unlikely, nearby electronic devices may be affected. In that case, move the ReSound Unite Phone Clip away from the affected electronic device.
- When using ReSound Unite Phone Clip and the device is affected by electromagnetic interference, move away from the source.
- Avoid exposing your product to rain, moisture or other liquids to protect against damage to the product or injury to you.
- Keep the product and any cords and cables away from operating machinery.
- If the product overheats, if the product has been dropped or damaged, if the product has a damaged cord or plug, or if the product has been dropped in a liquid, discontinue use and contact your hearing care professional.
- Dispose of the product according to local standards and regulations.
- Do not use in areas where there are explosive hazards.

Ignition of flammable atmospheres

- Do not use the product in environments where there is a danger of ignition of flammable gasses.



General Precautions

- Do not use this device in locations where it is forbidden to use electronic devices.
- X-ray radiation (e.g. CT scans, MRI scans) may adversely affect the correct functioning of this device. We recommend that you switch the device OFF before undergoing X-ray procedures and keep it outside the room.
- High-powered electronic equipment, larger electronic installations and metallic structures may impair and significantly reduce the operating range.
- If the hearing instruments do not respond to the device because of an unusual field disturbance, move away from the disturbing field.
- Your hearing instruments and this device were given a unique communication code during the fitting. This ensures that the device will not affect hearing instruments worn by others.

- Do not make any changes or modifications to this device.
- Opening the ReSound Unite Phone Clip might damage it. If problems occur which cannot be resolved, consult your hearing care professional.
- ReSound Unite Phone Clip may only be repaired by an authorized service center.
- Do not use ReSound Unite Phone Clip in areas where RF transmission is prohibited, e.g. air planes etc.
- Do only connect ReSound Unite Phone Clip to connections which it is explicitly intended for.

BUILT-IN BATTERY CARE: Please observe the following if the product contains a battery



- Your product is powered by a rechargeable battery.
- The full performance of a new battery is achieved only after two or three complete charge and discharge cycles.
- The battery can be charged and discharged hundreds of times, but will eventually wear out.
- Unplug the charger from the electrical plug and the product when not in use. Do not leave a fully charged battery connected to a charger, since overcharging may shorten its lifetime.

- If left unused, a fully charged battery will lose its charge over time.
- Leaving the product in hot places, such as in a closed car in the summer conditions, will reduce the capacity and lifetime of the battery.
- A product with a cold battery may not work temporarily, even when the battery is fully charged. Battery performance is particularly limited in temperatures well below freezing.



- "Caution" – The battery used in this product may present a risk of fire or chemical burn if mistreated.
- Do not attempt to open the product or replace the battery. It is built-in and not changeable. Use of other batteries may present a risk of fire or explosion and the warranty will be terminated.
- The battery in your product can not be removed or replaced by the user. Any attempt to do so is risky and may result in damage of the product.
- Only recharge the ReSound Unite Phone Clip only with a power supply unit that has been supplied together with the product.

- Dispose of batteries according to local regulations. Please recycle when possible.
- Do not dispose the battery as household waste or in a fire as it may explode.
- Batteries may explode if damaged.

CHARGER CARE: Please observe the following if the product is supplied with a charger



- Do not attempt to charge your product with anything other than the AC adapter provided. The use of any other types may damage or destroy the product and could be dangerous. Use of other chargers may invalidate any approval or warranty.
- For availability of approved enhancements, please check with your hearing care professional.
- Charge the product according to the instructions supplied with the product.

Charger warning!



- When you disconnect the power cord or any enhancement, grasp and pull the plug, not the cord.
- Never use a charger that is damaged.
- Do not attempt to disassemble the charger as it may expose you to dangerous electric shock.
- Incorrect reassembly can cause electric shock or fire when the product is subsequently used.
- Avoid charging your product in extremely high or low temperatures and do not use the charger outdoors or in damp areas.

Technical specifications

Operating range:	up to 3 meters
Wireless:	2,4 GHz
Operating temperature:	0 to 55 degree C
Storage temperature:	-20 to 60 degree C

Temperature test, transport and storage information

The product is subject to various tests in temperature and damp heating cycling between -25 C and +70C according to internal and industry standards.

Warranty

The ReSound Unite Phone Clip is covered by a limited warranty issued by the manufacturer for a period of 12 months from the day of the original purchase. Please notice that extended warranties may apply in your country. Please contact your local Hearing Care Professional for more information.

What is covered by this warranty?

Any electrical component, that because of workmanship, manufacturing or design defects fails to function properly under normal use during life of this warranty will be replaced or repaired at no charge for parts or labour when returned to the point of purchase.

If it is determined that repair is not feasible, the entire unit may be replaced with an equivalent unit upon mutual agreement of the Hearing Care Professional and the customer.

What is not covered by this warranty?

Problems arising from improper handling or care, excessive use, accidents, repairs made by an unauthorized party, exposure to corrosive conditions or damage due to foreign objects entering the device are NOT covered by the limited warranty and may void it. The above warranty does not affect any legal rights that you might have under applicable national legislation governing sale of consumer products. Your Hearing Care Professional may have issued a warranty that goes beyond the clauses of this limited warranty. Please consult your Hearing Care Professional for further information.

Serial number: _____

Date of purchase: _____

TROUBLESHOOTING GUIDE

SYMPTOM	CAUSE	POSSIBLE REMEDY
<i>The Phone Clip does not respond to any (long or short) presses on the multifunctional button</i>	The battery in the Phone Clip is depleted	Charge the battery
<i>The pairing button on the Phone Clip is pressed but no pairing melody is played in the hearing aid</i>	The Phone Clip and hearing aid are not within wireless range	Assure that Phone Clip and hearing aids are within wireless range, and repeat pairing process
	The Phone Clip and hearing aid have not been simultaneously in pairing mode	Repeat pairing process, and assure that the battery doors on both hearing aids are closed within 20 seconds after the pairing button has been pressed on the Phone Clip
<i>The Phone Clip cannot be found by the mobile phone when searching for it in the Bluetooth menu</i>	The Phone Clip and mobile phone are not within wireless range	Assure that Phone Clip and mobile phone are within wireless range, and repeat Bluetooth pairing process
	The Phone Clip is not in Bluetooth pairing mode	The Phone Clip is only in Bluetooth pairing mode for 120 seconds after having been activated. Repeat the Bluetooth pairing process

TROUBLESHOOTING GUIDE

SYMPTOM	CAUSE	POSSIBLE REMEDY
<i>The Bluetooth pairing failed</i>	The Phone Clip left Bluetooth pairing mode before mobile phone completed the pairing session	Repeat the Bluetooth pairing process, and assure that the process is completed within 120 seconds after having been activated in the Phone Clip
	The user entered a wrong 4-digit PIN code	Repeat the Bluetooth pairing process and if a PIN code is requested, enter 0000 (four zeros)
<i>The mobile phone is ringing but the light indicator on the Phone Clip does not flash, and no ringing tones will sound in the hearing aids</i>	The Phone Clip is powered off	Power on the Phone Clip
	The Phone Clip and mobile phone have not been paired	Perform the Bluetooth pairing process and make a Bluetooth connection between the Phone Clip and the mobile phone
	The Bluetooth connection between the Phone Clip and the mobile phone is lost	Assure that Bluetooth is enabled in the mobile phone and make a Bluetooth connection between the Phone Clip and the mobile phone again, e.g. by pressing the multifunction button briefly on the Phone Clip. As for any details of the Bluetooth operation of the mobile phone, please refer to its user guide

TROUBLESHOOTING GUIDE

SYMPTOM	CAUSE	POSSIBLE REMEDY
<i>The mobile phone is ringing and the light indicator on the Phone Clip do flash, but no ringing tones will sound in one or both hearing aids</i>	<p>The Phone Clip and hearing aids are not within wireless range</p> <p>The battery in the hearing aid is so depleted that it no longer supports audio streaming</p>	<p>Assure that Phone Clip and hearing aids are within wireless range</p> <p>Replace the battery in the hearing aid with a new one</p>
<i>The remote user does not hear my voice clearly The sound from the hearing aids is either to low or too high</i>	<p>The Phone Clip microphone does not pick up your voice correctly</p> <p>The audio input level is not suitable for listening</p>	<p>Assure that the Phone Clip microphone is kept close to your mouth, and that the Phone Clip does not rub against any clothing during the call</p> <p>Adjust the volume on the mobile phone until the sound is suitable, or adjust the volume using the "+" and "-" keys on the Phone Clip until the sound is suitable. Alternatively (option), use the "+" and "-" keys on the Remote Control for doing this operation</p>
<i>There is no sound in the hearing aids although being in the phone program</i>	<p>The Phone Clip and hearing aids are not within wireless range</p>	<p>Assure that Phone Clip and hearing aids are within wireless range</p>

Notes:

Notes:

Be aware of information marked with the warning symbol



WARNING points out a situation that could lead to serious injuries,

CAUTION indicates a situation that could lead to minor and moderate injuries



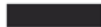
Advice and tips on how to handle your ReSound Unite accessory better.



Equipment includes RF transmitter



Product is a Type B applied part



Please ask your local hearing care professional concerning disposal of your ReSound Unite accessory



Any issues relating to the EU Medical Device Directive 93/42/EEC and R&TTE Directive 1999/5/EEC should be directed to GN Hearing A/S, Lautrupbjerg 7, DK 2750 Ballerup, Denmark

Worldwide Headquarters

ReSound A/S
Lautrupbjerg 7
DK-2750 Ballerup, Denmark
Tel.: +45 45 75 11 11
Fax: +45 45 75 11 19
www.resound.com

United Kingdom

GN ReSound Ltd.
Kirtlington Business Centre
Portway
Kirtlington
Oxon OX5 3JA
Tel.: +44 1869 352 800
Fax: +44 1869 343 466
www.gnresound.co.uk

Australia

GN ReSound Pty. Ltd.
Unit R1 Regents Park Estate
391 Park Road
Regents Park NSW 2143
Tel.: (free) 1800 658 955
Fax: +61 2 9743 7472
www.gnresound.com.au

New Zealand

GN ReSound (NZ) Ltd.
12 Parkway Drive
Mairangi Bay
Auckland
Tel.: (free) 0800 900 126
Fax: (free) 0800 007 695
www.gnresound.co.nz

ReSound

