

# USER GUIDE

## RECEIVER-IN-EAR HEARING INSTRUMENT



ReSound



rediscover hearing

**Statement:**

This device complies with Part 15 of the FCC Rules.

Operation is subject to the following two conditions: (1) this device may not cause harmful interference, and (2) this device must accept any interference received, including interference that may cause undesired operation.

Note: This equipment has been tested and found to comply with the limits for a Class B digital device, pursuant to part 15 of the FCC Rules. These limits are designed to provide reasonable protection against harmful interference in a residential installation. This equipment generates, uses and can radiate radio frequency energy and, if not installed and used in accordance with the instructions, may cause harmful interference to radio communications. However, there is no guarantee that interference will not occur in a particular installation. If this equipment does cause harmful interference to

radio or television reception, which can be determined by turning the equipment off and on, the user is encouraged to try to correct the interference by one or more of the following measures:

- Reorient or relocate the receiving antenna.
- Increase the separation between the equipment and receiver.
- Connect the equipment into an outlet on a circuit different from the one in which the the receiver is connected.
- Consult the dealer or an experienced radio/TV technician for help.

Changes or modifications can void the user's authority to operate the equipment

**Intended use**

Hearing instruments are intended for hearing impaired people to improve their hearing.

**List of countries:**

Products are intended for world wide sales

Specification of restrictions: None

These products are intended for worldwide sales, and in compliance with the following regulatory requirements:

- The device conforms to the Essential Requirements according to Annex I of Council Directive 93/42/EEC for medical devices (MDD) and essential requirements and other relevant provisions of Directive 1999/5/EC (R&TTE).

The declaration of conformity may be consulted at [www.resound.com](http://www.resound.com)

- For the Norwegian market the accessories comply to EN 12182 Technical Aids for disabled persons
- General requirements and test methods covered by the EMC and electrical safety tests according to EN/IEC 60601-1-2 and EN/IEC 60601-1-1.
- Other identified applicable international regulatory requirements in countries outside EU and US. Please refer to local country requirements for these areas.
- Products are categorized as receiver class 2 according to Directive 1999/5/EEC on Radio Equipment and Telecommunications Terminal Equipment (R&TTE)

## Introduction

Congratulations on the purchase of your new hearing instruments. ReSound's innovative sound technology and design, combined with the customised device programming selected by your hearing care professional, will make hearing a more enjoyable experience. Hearing instruments will enable you to hear sounds that you may not have heard in years because of your hearing loss. Practice and a positive attitude are important in learning to use hearing instruments. Your ReSound instruments have been adjusted according to your individual hearing loss and needs. Some people adjust quickly to wearing hearing instruments in their ears and hearing new sounds; other people may need more time.

Please read this manual carefully in order to wholly benefit from the use of your hearing instruments. With proper care, maintenance, and usage, your hearing instruments will aid you in better communication for many years. Ask your hearing care professional if you have any questions.

*ReSound is a registered trade mark of ReSound A/S*

Hearing instrument model: \_\_\_\_\_

Battery size: \_\_\_\_\_ Receiver tube length: \_\_\_\_\_ Dome size: \_\_\_\_\_

Left serial number: \_\_\_\_\_ Right serial number: \_\_\_\_\_

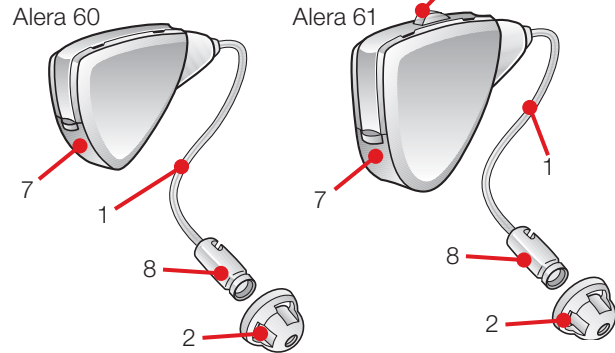
## CONTENTS

Introduction . . . . .	6
Description of the hearing instruments . . . . .	10
Getting started . . . . .	12
On/Off function . . . . .	12
SmartStart . . . . .	12
Inserting/Replacing the battery . . . . .	13
Low battery indicator . . . . .	14
Inserting/removing hearing instruments . . . . .	16
Operation of the hearing instrument . . . . .	19
Push button (Alera 61 only) . . . . .	19
Flight mode . . . . .	21
Telephone use . . . . .	21
Listen to radio or TV . . . . .	23

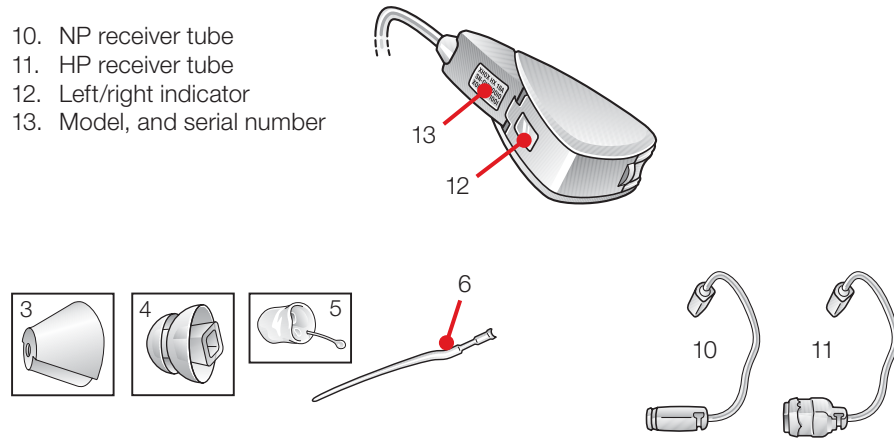
Care and maintenance . . . . .	26
Daily maintenance . . . . .	27
Cleaning the receiver tubes and domes . . . . .	29
Cleaning RIE moulds . . . . .	29
Replacing the wax filter (receiver in-the-ear models) . . . . .	30
How to apply domes . . . . .	34
General precautions . . . . .	36
General warnings . . . . .	37
Battery warning Information . . . . .	40
Troubleshooting guide . . . . .	42
Technical data . . . . .	50
Warranty and repairs . . . . .	51

**RIE BTE - AL961-DRW, AL761-DRW, AL561-DRW**  
**RIE Mini-BTE - AL960-DR, AL760-DR, AL560-DR**

1. Receiver tube
2. Receiver Open Dome
3. Receiver Tulip Dome
4. Receiver Power Dome
5. RIE mould
6. Sports lock
7. Battery compartment
8. Receiver
9. Push button



10. NP receiver tube
11. HP receiver tube
12. Left/right indicator
13. Model, and serial number



## Getting started

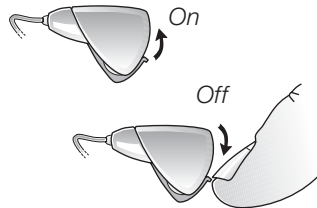
### On/Off function

1. When the battery door is closed, the hearing instrument turns on, and the default program will be activated.
2. To turn off the hearing instrument, open the battery door. Use your fingernail to pull it open.

**i** Tip: Whenever the hearing instruments are not in use, remember to turn them off to avoid unnecessary battery consumption.

## SmartStart

Hearing instruments can be turned on once you have placed them on your ears. If you prefer to turn them on just prior to placing them on your ear, your hearing care professional can activate

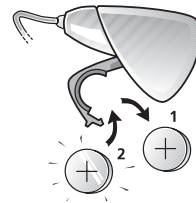


a function called SmartStart. This function will delay the time in which the hearing instruments turn on by ten seconds after the battery compartment is closed. With SmartStart, a beep will be heard for each second of the delay period.

## Inserting/Replacing the battery

1. Open the battery door completely by using your fingernail.
2. Remove the used battery, if present. Insert the new battery with the positive side in the correct position.
3. Always use new Zinc-Air batteries that have a minimum remaining shelf life of 1 year.
4. Gently close the battery door.

**i** Tip: Remove the batteries to prevent leakage when the hearing instruments are not in use for an extended period of time.



### **Low battery indicator**

Your hearing care professional can set your hearing instrument to give an acoustical indication when the battery is reaching its end of life. The hearing instrument will reduce amplification and emit a melody if battery power gets too low. This signal will recur every five minutes until the hearing instrument automatically switches off. It is recommended that you keep spare batteries on hand.

### **Low battery indicator (instruments paired with accessories only)**

Active usage of the ReSound Unite accessories (Remote Control, Phone Clip and TV Streamer) requires more battery power from the hearing instruments than when these are working on their own. When the battery in the hearing instrument has depleted to a level at which use of the ReSound Unite TV and Phone Clip cannot be supported, the hearing instrument will play two

sets of descending tones. After this, your hearing instrument and ReSound Unite Remote Control will continue to work as usual, but you will not be able to use your ReSound Unite TV and Phone Clip. At some point the battery level will not support the remote control either and you will once again hear the descending tones. The hearing instruments will continue to work as usual. Once a new battery is inserted, full operation of the accessories will resume.

### **Sports lock**

Sports lock will be applied or adjusted by your hearing care professional.




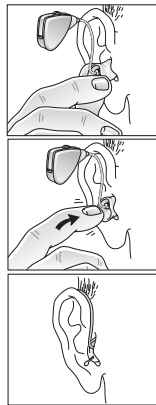
## Inserting/Removing hearing instruments


### Insertion (custom RIE moulds)

1. Hold the RIE mould between your thumb and index finger and position its sound outlet in your ear canal.
2. Slide the RIE mould all the way into your ear with a gentle, twisting movement.
3. Move the RIE mould up and down and gently press to ensure it is positioned correctly in the ear. Opening and closing your mouth can ease insertion.
4. Make sure the hearing instrument is seated behind the ear.

By experimenting, an easier method may be discovered. With proper insertion, hearing instruments should fit snugly but comfortably. If hearing instruments cause irritation of the ears, contact your hearing care professional.

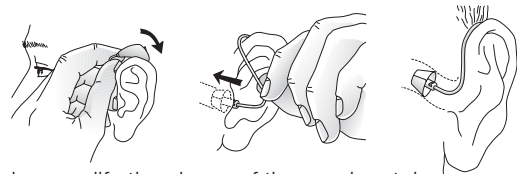
 Never attempt to modify the shape of the hearing instrument, RIE moulds, or tubing yourself.



 Tip: It may be helpful to pull the top of your ear back with your opposite hand during insertion to open the ear canal.

### Insertion (domes)

1. Hold the receiver tube where it bends, and gently push the dome into the ear canal. Push the dome far enough into the ear canal so that the receiver tube lies flush with the side of the head.
2. It is important that the tube and the dome fit correctly into your ear.
3. When the dome is placed correctly, you should not be able to see the receiver tube sticking out when facing a mirror.



 Note: You should never attempt to bend or modify the shape of the receiver tube.

### *Removal (RIE moulds)*

1. Grasp the removal string and pull the RIE mould outward.
2. Consult your hearing care professional if you have difficulties removing the hearing instrument.

### *Removal (domes)*

1. Hold the receiver tube with your thumb and forefinger and pull the tube outward.
2. Consult your hearing care professional if you have difficulties removing the hearing instrument.

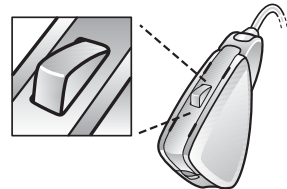


## **Operation of the hearing instrument**

### *Push button (Alera 61 only)*

Depending on your experience level with hearing instruments, individual hearing needs, and the type of listening environments you experience, your hearing care professional may activate additional programmes. If additional programmes have been activated, the following list explains how they work.

1. You can switch between programmes by pushing the push button once.
2. You will then hear one or more beeps. The number of beeps indicates which programme you have selected (one beep = programme one, two beeps = programme two, etc.).
3. When the hearing instruments are turned off and then back on, the hearing instrument always returns to the default setting (programme one).



Programme	Description of when to use
1	
2	
3	
4	

### **Flight mode\* (Alera 61 only)**

When boarding a flight wireless functionality must be deactivated, as it is not allowed to radiate radio signals during flights.

It is possible to disable wireless operation by opening and closing the battery compartment of the hearing instrument while at the same time pressing the push button.

When disabled manually, wireless operation may be re-enabled by opening and closing the battery compartment normally, (i.e. without at the same time pressing the push button).

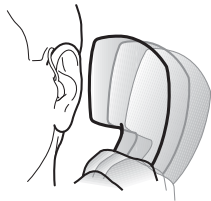
### **Telephone use**

If your hearing instruments are fit with a receiver open dome or receiver tulip dome, you can probably use the telephone as you normally would by holding it up to your ear canal opening. If

*\*Instruments paired with accessories only*

your hearing instruments are fit with a receiver power dome or RIE mould, finding the optimal position for holding a telephone while using a hearing instrument may require practice for some individuals, and one or more of the following suggestions may be helpful.

1. Hold the telephone as you would normally.
2. Hold the telephone towards the top of the ear (closer to where the microphones are located).
3. If whistling occurs, it may take a brief moment of holding the telephone in the same position before the hearing instrument adapts and reduces the feedback.
4. Any whistling may also be decreased by holding the telephone slightly away from the ear.
5. Depending on your individual needs, your hearing care professional may activate a programme specifically for telephone use.



### **Listen to radio or TV**

When listening to the TV or the radio, start out by listening to news commentators since they usually speak clearly, then try other programmes.

If you find it difficult to listen to TV or radio, your hearing care professional will be able to give you advice on available accessories to enhance your listening capabilities for TV and radio.

### **Cellular phones**

Your hearing instrument is designed to comply with the most stringent Standards of International Electromagnetic Compatibility. However, not all cell phones are hearing instrument compatible. The varying degree of disturbance can be due to the nature of your particular cellular phone or of your wireless telephony service provider.

If you find it difficult to obtain a good result while using your cellular phone, your hearing care professional will be able to give you advice on available accessories to enhance listening capabilities.

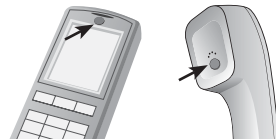
## PhoneNow

The PhoneNow function, allows your hearing instrument to automatically switch to your telephone programme when a telephone receiver is raised to the ear. When the telephone receiver is removed from the ear, the hearing instrument automatically returns to the previous listening programme.

### *Placement of PhoneNow magnets*

In order to place PhoneNow magnets properly:

1. Clean the telephone receiver thoroughly.
2. Hold the telephone vertically, in a position similar to when making a telephone call.
3. Place the magnets just below the telephone receiver. If necessary, move the magnet to another position to improve ease of use and comfort while speaking.



4. Use only recommended cleaning agent to clean the telephone prior to placing the magnet on the phone.

### *PhoneNow usage*

Telephones can be used in a normal manner. A short melody will indicate that the PhoneNow feature has automatically switched the hearing instrument to your telephone programme. Initially, you may need to move the telephone receiver slightly to find the best position for reliable PhoneNow activation and good hearing on the telephone.

### *PhoneNow precautions*



1. Keep magnets out of reach of pets, children and mentally challenged persons. If a magnet is swallowed, please seek advice from a medical practitioner.
2. The magnet used to strengthen the magnetic field of a telephone receiver may affect

functionality of some medical devices or electronic systems. Always keep the magnet or a telephone equipped with the magnet at least 30 cm (12”) away from pacemakers, credit cards and other magnetically sensitive devices.

3. High distortion during dialing or phoning may mean that the magnet is not in the optimal position relative to the telephone receiver. To avoid the issue, please move the magnet to another place on the telephone receiver.
4. Only use magnets supplied by GN ReSound.

### Care and maintenance



#### *Proper handling*

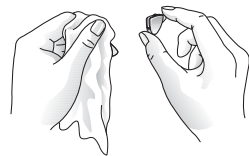
Your hearing instrument is protected by a layer of protective, hydrophobic nanocoat material. However, please follow the following instructions to further prolong the durability of your hearing instruments.

1. Never immerse hearing instruments in water or other liquids, as liquids may cause permanent damage to the hearing instruments.
2. Avoid rough handling of hearing instruments or dropping them on hard surfaces or floors.
3. Do not leave hearing instruments in or near direct heat or sunlight, as excessive heat can cause damage or deform the casing.
4. Hair spray, make-up, etc. may damage hearing instruments, and these should be removed prior to the application of cosmetics.

### Daily maintenance

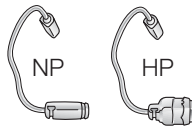


It is important to keep your hearing instrument clean and dry. On a daily basis, clean the hearing instruments using a soft cloth or tissue.



## The receiver tube

The receiver tube comes in two different power levels: NP (Normal Power) and HP (High Power). Depending on your hearing loss you have either been fitted with the NP or the HP receiver type. Please go to page 10 to see your selected type. The receiver tube contains the wiring to the receiver which delivers the sound to the ear canal. It is important that the receiver tube and the receiver dome/RIE mould fits correctly in your ear. If the receiver tube or the receiver dome/RIE mould irritates your ear in any way and prevents you from wearing your hearing instrument, please contact your hearing care professional. You should never attempt to modify the shape of the receiver tube yourself. The receiver tube and the receiver dome/RIE mould should be cleaned regularly. Please see instructions in the next section.

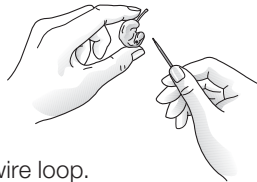


## Cleaning the receiver tubes and domes

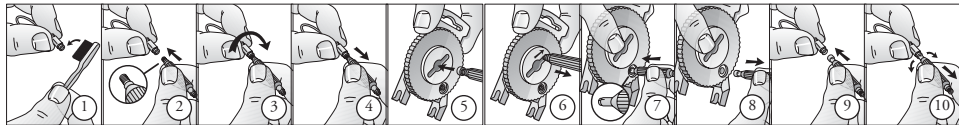
The receiver tube and the receiver dome should be cleaned regularly. Use a damp cloth to clean the receiver tube and receiver dome on the outside. Do not use water when you are cleaning the receiver tubes or the receiver domes. Please see instruction on page 30 or 31 for how to change the wax guard filter.

## Cleaning RIE moulds

1. Separate the mould from the receiver tube.
2. Clean the RIE mould using a mild soap, and rinse with lukewarm water.
3. After cleaning, dry RIE moulds thoroughly and remove any residual water and debris from the tubing utilising an air bulb and wire loop.



## Changing wax guard for NP receiver tube



1. Clean any debris from the old waxguard.
2. Insert the wand into the old waxguard.
3. Twist the wand with the waxguard in a clockwise direction to ensure it is attached to the wand.
4. Pull the wand and waxguard away from the tube/mould.

5. Insert the old waxguard into the center of the HF3 wheel.
6. Dispose of the old waxguard by drawing the wand to the narrow end of the center disposal area.
7. Insert the empty wand into a new waxguard on the HF3 wheel.
8. Pull the new waxguard attached to the wand away from the HF3 wheel.
9. Insert the wand into the receiver tube/mould.
10. Twist the wand to release the new waxguard onto the receiver tube/mould.



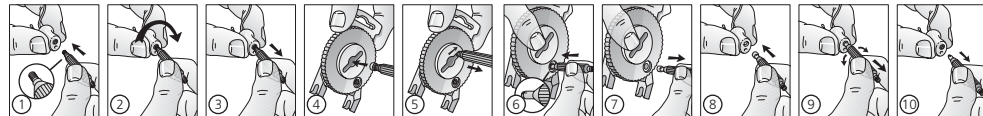
## Changing wax guard for HP receiver tube

*Power Dome:*

Please contact your hearing care professional to have the wax guard in the power dome exchanged for you.

## Changing wax guard for HP receiver tube

*RIE Mould:*

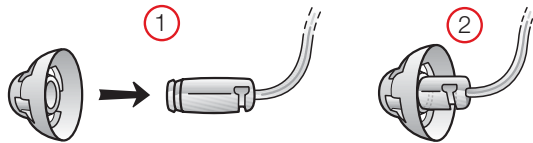


## How to apply domes

It is recommended that your hearing care professional change domes, as incorrect dome replacement could result in injury.

### ReSound standard domes

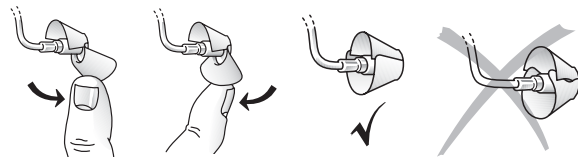
1. Push the new dome over the receiver.
2. Make sure that the new dome is properly and securely mounted.



### ReSound tulip domes

Tulip domes are mounted in a similar manner to standard domes, but a few extra steps are required. Tulip domes consist of two “petals”. It is important to note that the largest petal is the outermost petal. To ensure this:

1. Push the largest petal away from the receiver tube using a finger. This bends the petal forward.
2. Then push the largest “petal” back, and it will be placed on top of the smaller petal.



## General precautions



1. Do not leave hearing instruments in the sun, near an open fire, or in a hot, parked car.
2. Do not wear hearing instruments while showering, swimming, in heavy rain, or in a moist atmosphere such as a steam bath or sauna.
3. Should the hearing instrument become moist, remove the battery and place the hearing instrument in a closed container with a drying agent. Your hearing care professional can provide options for drying containers or kits.
4. Remove the hearing instruments when applying items such as cosmetics, perfume, after-shave, hair spray, and suntan lotion.
5. When wireless function is activated, the device uses low-powered digitally coded transmissions in order to communicate with other wireless devices. Although unlikely, nearby electronic devices may be affected. In that case, move the hearing instrument away from the affected electronic device.

6. When using wireless functionality and the devices are affected by electromagnetic interference, move away from the source.

## General warnings



1. Consult a hearing care professional if you discover a foreign object in your ear canal, if you experience skin irritation, or if excessive ear wax accumulates with the use of the hearing instrument.
2. Different types of radiation, from e.g. NMR, MRI, or CT scanners, may damage hearing instruments. It is recommended not to wear hearing instruments during these or other similar procedures. Other types of radiation, such as burglar alarms, room surveillance systems, radio equipment, mobile telephones, contain less energy and will not damage hearing instruments. However, they have the potential to momentarily affect the sound quality or temporarily create strange sounds from hearing instruments.

3. Do not wear hearing instruments in mines, oil fields, or other explosive areas unless those areas are certified for hearing instrument use.
4. Do not allow others to use your hearing instruments. This may cause damage to the hearing instruments or to the hearing of the other individual.
5. Due to a choking hazard, hearing instrument usage by children or mentally challenged individuals should be supervised at all times.
6. Hearing instruments should be used only as prescribed by your hearing care professional. Incorrect use may result in hearing loss.
7. Be careful when boarding flights to deactivate the wireless functionality.
8. Keep magnets out of reach of pets, children and mentally challenged persons. If a magnet is swallowed, please seek advice from a medical practitioner.

9. Turn off your wireless functionality by using the flight mode in areas where radio frequency emission is prohibited.
10. Do only connect ReSound hearing instruments to accessories that are intended and qualified to be used with ReSound hearing instruments.
11. For use of wireless functionality do only use ReSound Unite accessories. For further guidance please refer to the user guide of the relevant ReSound Unite accessory.

## **Battery warning information**



Batteries, although very small, contain dangerous substances, and should be disposed of carefully. This is for the safety of you and the environment. Please note:

1. DO NOT attempt to recharge standard zinc air batteries. They may leak or explode.
2. DO NOT attempt to dispose of batteries by burning them.
3. DO NOT place batteries in your mouth. Consult a physician immediately if a battery has been swallowed, as they can be harmful to your health.
4. Keep batteries away from pets, children and mentally challenged persons.

## TROUBLESHOOTING GUIDE

SYMPTOM	CAUSE	POSSIBLE REMEDY
No sound	<ul style="list-style-type: none"><li>• Not turned on</li><li>• Dead battery</li><li>• Battery door will not close</li><li>• Blocked RIE mould or tube</li><li>• Blocked wax filter</li></ul>	<ul style="list-style-type: none"><li>• Turn on by closing the battery door</li><li>• Replace battery</li><li>• Insert battery properly</li><li>• Clean RIE mould or tube</li><li>• Replace wax filter or consult your hearing care professional</li></ul>

## TROUBLESHOOTING GUIDE

SYMPTOM	CAUSE	POSSIBLE REMEDY
Not loud enough	<ul style="list-style-type: none"><li>• Incorrect RIE mould placement</li><li>• Blocked RIE mould or dome</li><li>• Change in hearing sensitivity</li><li>• Excessive ear wax</li><li>• Volume set too low</li></ul>	<ul style="list-style-type: none"><li>• Reinsert RIE mould</li><li>• Clean RIE mould, replace dome, replace filter</li><li>• Consult your hearing care professional</li><li>• Consult your hearing care professional</li><li>• Consult your hearing care professional</li></ul>

## TROUBLESHOOTING GUIDE

SYMPTOM	CAUSE	POSSIBLE REMEDY
Excessive whistling / feedback	<ul style="list-style-type: none"><li>• Incorrect RIE mould placement</li><li>• Incorrect dome placement</li><li>• Excessive ear wax</li><li>• Feedback control may need adjustment</li><li>• RIE mould tubing worn or damaged</li><li>• Hearing instrument settings not optimal</li></ul>	<ul style="list-style-type: none"><li>• Re-insert RIE mould carefully</li><li>• Re-insert dome</li><li>• Consult your hearing care professional</li><li>• Consult your hearing care professional</li><li>• Consult your hearing care professional</li><li>• Consult your hearing care professional</li></ul>



## TROUBLESHOOTING GUIDE

SYMPTOM	CAUSE	POSSIBLE REMEDY
Sound distorted / not clear	<ul style="list-style-type: none"><li>• Weak battery</li><li>• Improper RIE mould or dome fit</li><li>• Hearing instrument damaged</li><li>• Hearing instrument settings not optimal</li></ul>	<ul style="list-style-type: none"><li>• Replace battery</li><li>• Consult your hearing care professional</li><li>• Consult your hearing care professional</li><li>• Consult your hearing care professional</li></ul>

*If there are any other problems not mentioned in this guide, please contact your hearing care professional.*

## TECHNICAL DATA

Hearing Instrument Model	Maximum output (2cc Coupler / IEC 60118-7)
AL961-DRW, AL761-DRW, AL561-DRW (NP-Open)	114 dB SPL (typical)
AL961-DRW, AL761-DRW, AL561-DRW (NP)	114 dB SPL (typical)
AL961-DRW, AL761-DRW, AL561-DRW (HP-Open)	117 dB SPL (typical)
AL961-DRW, AL761-DRW, AL561-DRW (HP)	117 dB SPL (typical)
AL960-DR, AL760-DR, AL560-DR (NP-Open)	114 dB SPL (typical)
AL960-DR, AL760-DR, AL560-DR (NP)	114 dB SPL (typical)
AL960-DR, AL760-DR, AL560-DR (HP-Open)	117 dB SPL (typical)
AL960-DR, AL760-DR, AL560-DR (HP)	117 dB SPL (typical)

## Warranty and repairs

ReSound grants a comprehensive warranty on hearing instruments from the original date of purchase. Hearing instruments will be repaired or replaced at the discretion of ReSound when examination of the hearing instruments proves the existence of any defects in workmanship or materials.

The warranty period of hearing instruments is designated on your warranty card, which is provided by your hearing care professional.

ReSound hearing instruments that malfunction must be repaired by a qualified technician. Do not attempt to open the case of hearing instruments, as this will invalidate the warranty. For hearing instruments that require service, please contact your hearing care professional for assistance.

All covered instruments and/or instrument parts received for warranty service at ReSound will be repaired or replaced with new or reconditioned components, without charge, to meet the performance specifications for that model.

In its service policy, ReSound pledges to abide to the highest quality standards and is committed to environment-friendly best practices.

### **Temperature test, transport and storage information**

GN ReSound Hearing Instruments are subjected to various tests in temperature and damp heating cycling between -25 C and +70C according to internal and industry standards.

During transport or storage, the temperature should not exceed the limit values of -20C to 60C and relative humidity of 90% RH, non condensing (for limited time). The air pressure between 500 and 1100 hPa is appropriate.

Be aware of information marked with the warning symbol



**WARNING** points out a situation that could lead to serious injuries,  
**CAUTION** indicates a situation that could lead to minor and moderate injuries”



Advice and tips on how to handle your hearing instrument better.



Equipment includes RF transmitter



Please ask your local hearing care professional  
concerning disposal of your hearing instrument

### **Worldwide Headquarters**

ReSound A/S  
Lautrupbjerg 7  
DK-2750 Ballerup, Denmark  
Tel.: +45 45 75 11 11  
Fax: +45 45 75 11 19  
www.resound.com

### **United Kingdom**

GN ReSound Ltd.  
1 Landscape Close  
Weston Business Park  
Weston-on-the-Green  
Oxon OX25 3SX  
Tel.: +44 1869 352 800  
Fax: +44 1869 343 466  
www.gnresound.co.uk

### **Australia**

GN ReSound Pty. Ltd.  
Unit R1 Regents Park Estate  
391 Park Road  
Regents Park NSW 2143  
Tel.: (free) 1800 658 955  
Fax: +61 2 9743 7472  
www.gnresound.com.au

### **New Zealand**

GN ReSound (NZ) Ltd.  
12 Parkway Drive  
Mairangi Bay  
Auckland  
Tel.: (free) 0800 900 126  
Fax: (free) 0800 007 695  
www.gnresound.co.nz

CE  
0297



Any issues relating to the EU Medical Device Directive 93/42/EEC, or Council Directive 1999/5/EEC on Radio Equipment and Telecommunications terminal equipment should be directed to ReSound A/S

**ReSound**

rediscover hearing