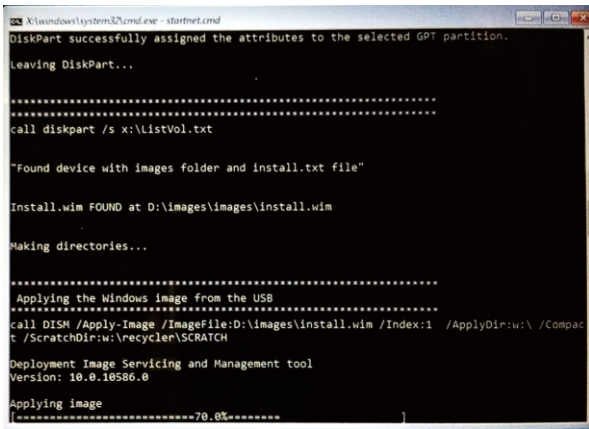
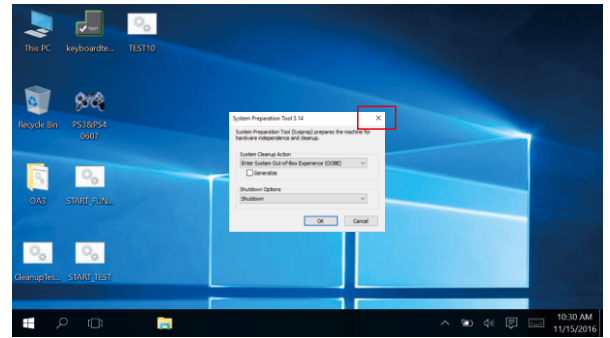


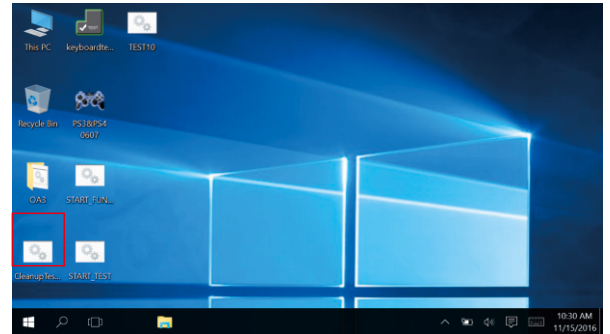
Step 5: We have entered the interface of automatic system installation as shown below. The entire upgrade process takes about 20 minutes. the device will automatically restart when the upgrade is completed.



Step 6: Upon the first boot the system will go to factory mode as shown in the following figure, just click the red X on top right corner to close this window.



Step 7: Double-click the Cleanup TestTool file to automatically clear the OOBE file and shut down.



Step 8: Reboot, then set the language options, please refer to the chapter of “Language Settings upon Boot Up”

Cannot find any Wi-Fi hotspot, what should I do?

The default Wi-Fi supports most of the hot spots, If no Wi-Fi hotspot can be found, you need to download and install the following WIFI compatibility patches (can repair problems in some Mercury routers and Huawei 4G hotspots):

WIFI China channel patch:
<http://www.gpd.hk/news.asp?id=1519&selectclassid=002002>

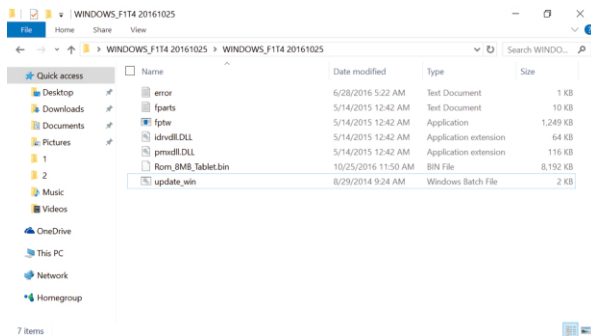
Domestic users shall download the WIFI Chinese channel patch, Download WIFI_CN.rar, and double-click Wi-Fi.bat file (a DOS batch file) after decompression.

How to upgrade to newer versions of BIOS?

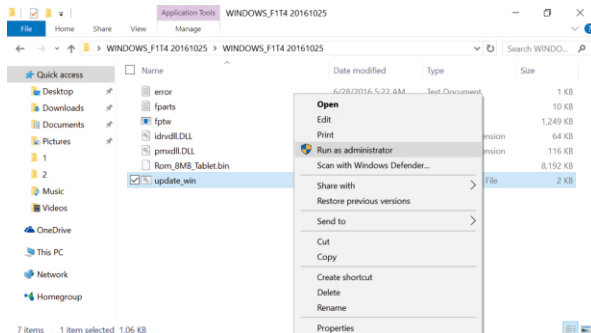
Note: Make sure there is more than 20% capacity left in the battery and operate with administrator privileges.

First download the latest BIOS:
<http://www.gpd.hk/news.asp?id=1519&selectclassid=002002>

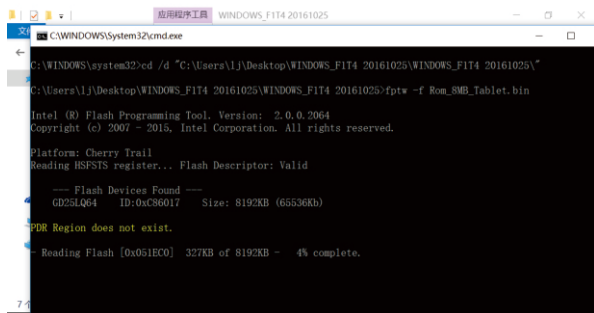
Step 1: download and extract the files, then enter the WINDOWS_FIT4 folder (Note: Do not unzip to the U disk, directly unpacked it to the storage space of the device, otherwise there will be errors)



Step 2: Right-click “update_win.bat”, select “Run as administrator”

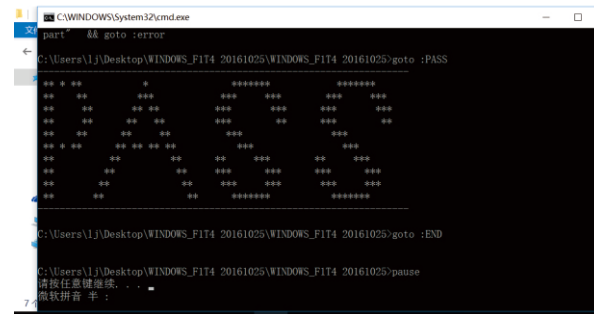


Step 3: the “User Account Control” window will appear, click “Yes” to automatically run the BIOS upgrade program as shown below



Step 4: Wait for the completion prompt of “PASS”, as shown below, which indicates the BIOS upgrade is successfully completed.

(If an error occurs, the window will turn red, close the window and re-run it again. Note: do not shut down upon BIOS upgrade failure, just close the window and re-run it for several times!)



Step 5: Restart the device (do not to plug in the charger at this time, otherwise the charging screen will pop up. You can press Ctrl + Alt + Del to restart). The screen will turn black for about 1 minute after restart, then the BIOS will reboot twice for automatic updating purposes, never do forced shutdown at this time!

VI. Technical service

Mailing information

Add:Room 1006 Block 4D,Software Industry Base,
High tech park,Nanshan district,Shenzhen.Guangdong
Province,518000,China

Email add : sales03@gpd.hk

Telephone : +86 0755-86572275

User manual

DisrupWare

Product Name: Intelligent outdoor sports watch
Model Name: CL-1006 3G

Manufacture: Shenzhen Yiliu technology co., Ltd

Appearance

Wear sport band

Connect to the computer

Get Started

Note: Right swipe for going back to the previous interface. Press the "Home" button for going back to the home dial.

Wake the screen by raising your wrist

To improve battery life, you can turn off the feature.

Watch face setting

1. Featured watch face: Heart rate monitor, Altitude, Pressure, Pedometer.
2. Replace watch face: Long press, Swipe.
3. Color variants: Various color themes for the watch face.

Main interface

Pedometer

Heart rate monitor

Outdoor environment

Historical data

SOS

Please enter emergency contact information. You can save three emergency contacts.

Activate SOS

Emergency contact information must be entered.

Power on - off / Restart

Set an alarm

Sound Record

Quick operation

Change menu style

Call

Send message

Add a contact

System setting

Power saving techniques

1. Adjust the screen brightness and sleep time.
2. Turn off the "Wake Screen on Wrist Raise" function and change the frequency of sensors update.
3. Turn off Bluetooth, Wi-Fi and location service.

Remove apps

1. This can also be done through a 3rd party app portal.

Set screen lock

To unlock

Change language

Reset the watch

Clear a notification

Turn on/off Airplan mode

Activate the "Developer option"

1. Go to "Settings" and click on "About Watch, click on "Build number" several times.
2. Once the "Developer option" is on, select the "USB debugging" option.
3. On a PC, click on the "True" device, you can transfer files to the watch from a PC.

APPS

Tether a watch to smartphone

Logout/change account

Setup geo-fencing on smartwatch

1. Select a type of geo-fencing: Radius, Numbers.
2. View members within a fence: Geo-Fencing, Log record, members.

3. Geo-fencing function on watch

Connect with others nearby

Replace watch face

1. The dial in use.
2. Select dial.
3. Last dial.

Record tracks on watch

Track Information

SOS from the App

Reminder

Step count and Heart Rate

Warning and Notice

1. Please keep the product clean, especially inside the product and the SIM card slot. Failure to do so may cause the product malfunctions.
2. Please ensure that the product is charged with sufficient battery power to avoid operating.
3. Please avoid operating under conditions when there is extreme temperature (too high or too low) and high humidity and under very dusty environment. Failure to do so may cause may cause damage to the product.
4. Please make sure that the product is charged with power chargers provided by the product manufacturer. Failure to do so will void the warranty and may cause severe damage to the product.
5. The product is intended for lawful use. Consequences of any violation of the law will be borne by the user.

Using battery

1. Do not dismantle, open or shred secondary cells or batteries.
2. Do not expose cells or batteries to heat or fire. Avoid storing under direct sunlight.
3. Do not short circuit a cell or a batteries. Do not store cells or batteries haphazardly in a box or drawer where they may short circuit each other or be short circuited by other metal objects.
4. Do not remove a cell or battery from its original packaging until required for use.
5. Do not subject cells or batteries to mechanical shock.
7. Do use any charger other than that specifically provided for use with the equipment.

Set up emergency contacts

Personal settings

Personal

Pedometer

Heart

FCC Warning

This device complies with part 15 of the FCC Rules. Operation is subject to the following two conditions: (1) This device may not cause harmful interference, and (2) this device must accept any interference received, including interference that may cause undesired operation.

Any Changes or modifications not expressly approved by the party responsible for compliance could void the user's authority to operate the equipment.

Note: This equipment has been tested and found to comply with the limits for a Class B digital device, pursuant to part 15 of the FCC Rules. These limits are designed to provide reasonable protection against harmful interference in a residential installation. This equipment generates uses and can radiate radio frequency energy and, if not installed and used in accordance with the instructions, may cause harmful interference to radio communications. However, there is no guarantee that interference will not occur in a particular installation. If this equipment does cause harmful interference to radio or television reception, which can be determined by turning the equipment off and on, the user is encouraged to try to correct the interference by one or more of the following measures:

- ▶ -Reorient or relocate the receiving antenna.
- ▶ -Increase the separation between the equipment and receiver.
- ▶ -Connect the equipment into an outlet on a circuit different from that to which the receiver is connected.
- ▶ -Consult the dealer or an experienced radio/TV technician for help.

The device has been evaluated to meet general RF exposure requirement. The device can be used in portable exposure condition without restriction.