

User Manual

Statement

To make the best use of your phone is in the state , please read this manual carefully . For the sake of accuracy , this manual has been validated and reviewed . This manual contains instructions and descriptions of publication is accurate . But after the phone and manual may change without notice . The Company reserves the rights related to this manual !

Table of Contents

Safety Information	4
Appearance and Key Function.....	7
Introduction	8
Call Functions.....	9
Contacts	11
Messaging.....	15
Internet Browser	17
Bluetooth	19
Camera.....	21

Gallery	25
Music.....	27
Sound Recorder.....	28
Alarm Clock	30
FM Radio.....	31
Settings.....	33
Storage	41

Safety Information

Please carefully read the terms below:

Use Safely

Do not use your mobile phone where it might cause danger.

Transportation Safety

Please observe all transportation laws and regulations.

Please drive with both hands on the wheel.

DO NOT TEXT AND DRIVE

Hospitals

Please follow limitations.

Please turn off your mobile phone when near medical instruments.

Airports

Please follow all flight safety regulations and do not use your phone during flight.

Toxic Chemicals

Do not use your mobile phone around fuels or chemicals.

Explosion Hazard

Please observe related limitations and do not use your mobile phone around an area where explosions may occur.

Accessories and Batteries

Please use only Blu authorized accessories and batteries.

Backup

Please remember to keep a written record of all important information.

Water

Your phone is not waterproof. Keep it away from water and liquids.

Emergency Calls

Make sure your mobile phone is switched on and in a service area. In home screen, tap the phone key and dial 112 and send.

Appearance and Key Function



Introduction

Installation of the SIM Card

Please install the SIM card before using your phone.

Note: Please keep the SIM card out of the reach of children. The SIM card and its contact are easily damaged due to scratching or bending. Please be cautious when carrying, installing or taking out the SIM card. The SIM card is obtained through your service provider.

To insert SIM card(s):

1. Switch off the mobile phone and remove the rear cover.
2. Insert the SIM card(s)
3. Replace the rear cover of the mobile phone and power on.

Power On and Off

On - Please ensure the SIM card has been properly inserted into

the phone. Long press the Power key to switch on the phone on.

Off - In standby mode, long press on Power key until an options menu appears. Select OFF in the menu and confirm

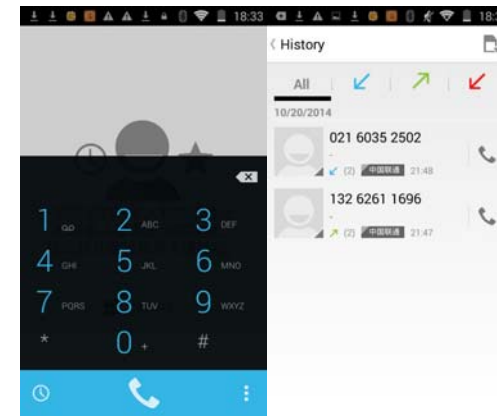
Password Lock

You may set a screen unlock picture or a PIN code lock as a security measure. For further information regarding password locks, password revision and other functions please enter the security settings of the phone.

Call Functions

At the dial keyboard, enter the phone number and then click the dial key. You may choose which SIM card the call will be placed on. If dialing an extension, you may click the dial pad icon in the bottom of the screen to open the interface and enter the number of the extension. You may also enter an input number and call contacts

through speed dial.



Call Logs

Every telephone number called and received will be saved in the phones call log. There will be an indicator in the call logs that will display SIM1 or SIM2. All numbers in the call log can be dialed directly by clicking the dial icon on the right side of the screen. When the number appears on the list, click it to view details.

Proximity Sensor

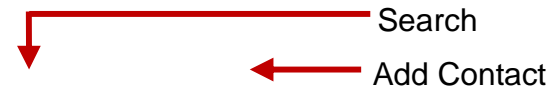
The proximity sensor determines how far away an object is from the device. During the call or when you place the phone close to the ear, the backlight will turn off automatically which conserves battery and prevents inadvertently touching.

Contacts

11

Enter: Click on the applications menu and select contacts

- The default display is the phone contacts and SIM card contacts
- The contacts are organized alphabetically by default.



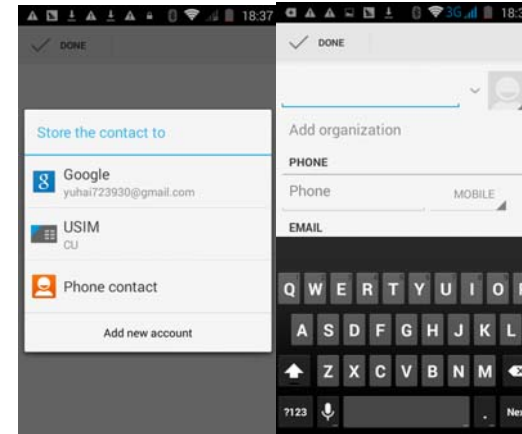
Click the Search icon to enter the contact search interface.

12

- Any numbers or letters associated with any of the contacts saved in the list will be shown in the search results.
- If there were no matches for the inputted contact, the interface will display no contacts found.

Add New Contact

1. Click “Add Contact” icon
2. Select to save contacts to phone or SIM card
3. You may edit contact picture, name, telephone number, group, address, and email among other options
4. Click to finish and save contact.



Messaging

You may use this function to exchange text messages and multimedia messages with your family and friends. The messages to and from the same contact or phone number will be saved into a single conversation so you may see the entire message history conveniently.

Send an SMS

Application Menu » Messaging » New message

(or use shortcut icon)

1. Click to enter recipient (You may enter contacts from contact book or enter a new number)
2. Compose Message
3. Send

Send an MMS

When creating message, the default message style is SMS. The message will automatically convert to MMS when adding an attachment.

1. Click the Paperclip icon in the messaging interface.
2. Click "Attach" to add the following attachments.



Attachment
Type for MMS
Message

Internet Browser

17

Menu Functions

Backward

- After browsing through multiple pages, this option will return the user to the previous page.

Forward

- After browsing through multiple pages, this option will move to a web page after the current page.

Windows

- You may view all windows open by clicking the windows icon in the upper right part of the browser.

Bookmarks

- Click the Bookmarks option to make the current URL as a saved Bookmark.
- Click Bookmarks to opened saved bookmarks.

18

More

Find on page: Search current page.

Share page: Select to share the current page.

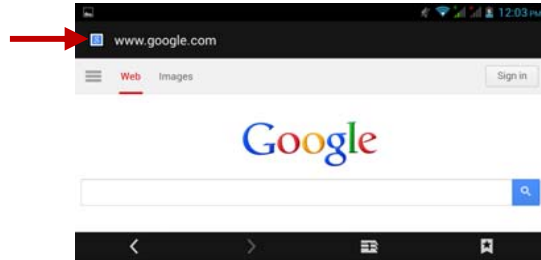
Save for offline reading: Saves page for offline reading.

Page info: Display page address and other information of the current browsing

History: Show your browsing history and view the most visited pages.

Settings: Contains a variety of browser settings.

Browser




Bluetooth

Bluetooth is a short-range wireless communications technology that devices can use to exchange information and connect to different types of devices which include headsets, car kits, and other devices.

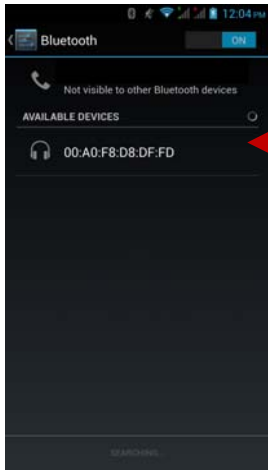
Power on Bluetooth

1) Settings » Wireless & Networks » Bluetooth and select to power on Bluetooth.

2) The Bluetooth icon will appear grey in the  in the notification bar. Click “scan for devices” and the phone will start to scan for all devices within range.

3) In Bluetooth settings all the devices found will displayed in the list under the icon.

Note: The maximum detecting time of the phone is 2 minutes.



List of available devices

Camera

Camera

Prior to use: Install memory card before using the camera or video

camera. All photos or videos taken by the phone are stored in the memory card.

Open Camera

1. Applications Menu » Camera
2. Switch to video mode if you want to record videos.

Note: You may also place a camera shortcut on any of the screens

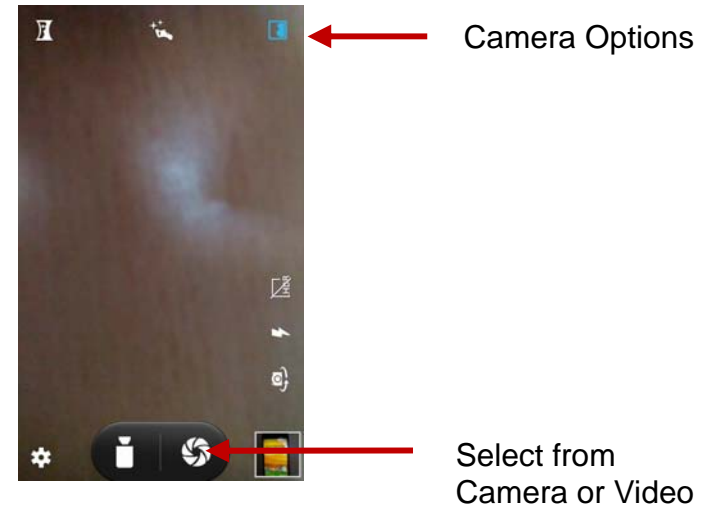
Take Pictures

1. Aim the object that the picture will be taken.
2. Press the “Shutter” button on the screen.
3. After taking the picture, the file will be saved in the camera’s gallery folder.
4. You can view the photos by clicking the preview box button.

You may adjust various settings for the camera by pressing Menu while in the camera interface.

When in the camera viewfinder mode, you can switch to video or photos' gallery. On the camera viewfinder mode, you will find the display the preview of the previous picture taken. Click the "preview box" and the photo will display in full screen.

23



24

Gallery

Open Images

Applications Menu » Gallery

Share Pictures

You may share pictures by sending them through Gmail or the E-mail application. You may also send pictures through the MMS message function by composing a message and attaching the picture. Any image can also be sent via the Bluetooth function by selecting Bluetooth equipment that has been paired.

Adjust Image

Press Menu and Edit to adjust images

Edit light: Fill Light, Highlights, Shadows, Auto-Fix.

Edit image effects: Cross-process, Posturize, Logo, Documentary, and Fish Eye.

Color Effects: Warmth, Saturation, B&W, Sepia, Negative, Tint, Duo-tone, Doodle.

Crop: Crop, Red Eye, Straighten, Rotate, Flip, Sharpen.

View Images

In the picture interface, click on an album to view images

You can choose to display small or large thumbnails. In the photo album, scroll the picture towards left to view the next picture or towards right to view the previous one.

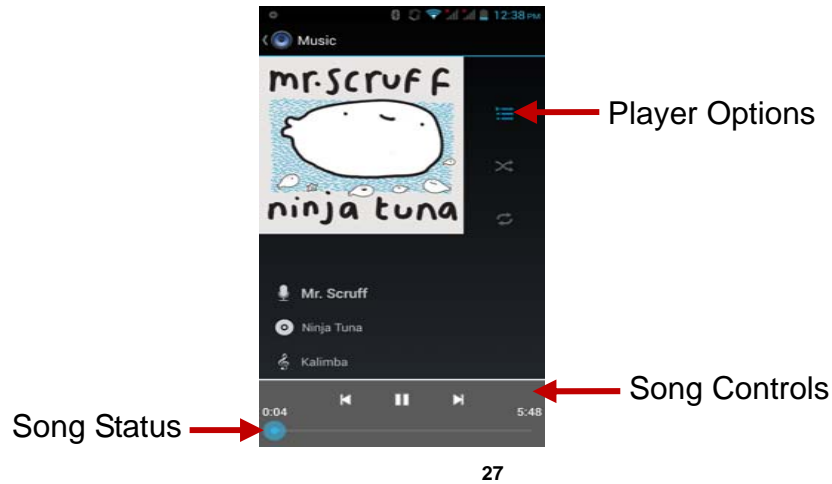
Crop Pictures

1. If you want to adjust the size of the picture, use the crop tools. Once the arrow appears, pinch your fingers in or out to adjust the size.
2. If you want to adjust the image and keep its proportion, please hold down any of the four corners of the image and adjust.

Music

Open Music

Application Menu » Music



Search Music

You may choose to search for music from media folder through artist name, song name, album name. **The following formats are available:** AMR, M4A, MIDI, MP3, WAV, and OGG.

Sound Recorder

The Sound Recorder can record voice or any audio.

You may send any recorded audio via Bluetooth or MMS and also have the option to make any recorded audio the phones default ring tone.

Notice: The recorder only uses AMR 3GPP format.

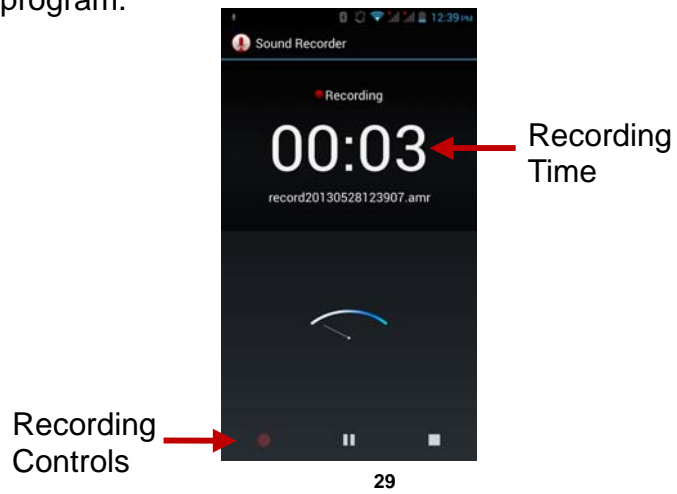
Record

-Keep the phone's microphone near the voice source.

-Click the record button to record the audio.

-Click the stop button to stop recording the audio.

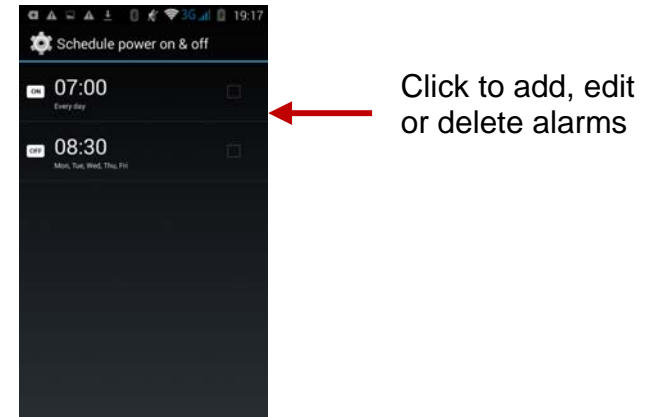
All recordings will be saved in my recording folder in the default music program.



Alarm Clock

1. Click on the Clock icon in the application menu

2. Click set alarm button and enter the alarm clock set interface where you may add and edit alarms



FM Radio

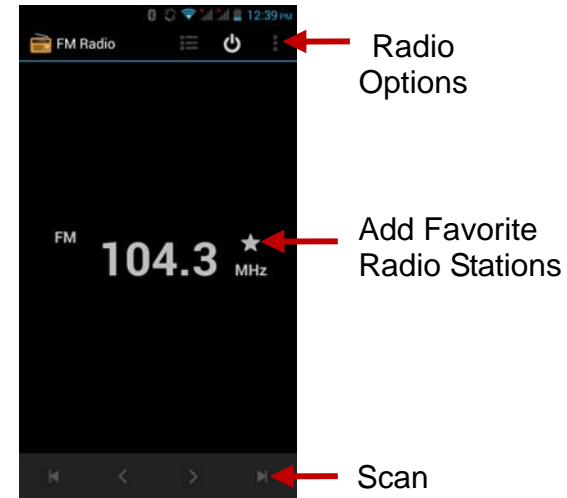
FM Radio

Through this function, you may listen to FM radio on the device. The FM radio uses the wired headphones as an antenna in order to receive signal. Before using this function, connect the original equipment headphones that came with the phone.

Open FM radio

Press the FM Radio icon to open the application.

1. Click "Search" automatic scans of FM channels.
2. Click to add favorite radio stations.



FM Radio as Background

Click on the Home key to move the FM Radio program to the background.

Settings



SIM Management

- Select to disable the SIM card.
- Network Operators.



Wi-Fi / WLAN

- **Wi-Fi » Wi-Fi settings » Click Wi-Fi** to power on. When switched on, the Wi-Fi will automatically search for available networks. Any unsecured network can be used directly and any secured network requires a password or

credentials prior to connection.



Bluetooth

- Press the switch to power on Bluetooth. Once on, the Bluetooth will automatically scan for any nearby open equipment.



Data Usage

- Data usage and mobile data traffic limit.

More Wireless & Networks

- Airplane Mode
- VPN
- Tethering & Portable hotspot
- Mobile networks and APN Settings

Note: When in flight mode, Wi-Fi will turn off automatically.

Audio Profiles

This option sets the phone tone settings for receiving calls or notifications. Some of the settings include

- Vibrate, volume, ring tones, ring tones notification and haptic feedback tones

Display

(a) Brightness (b) Auto rotating screen (c) Wallpaper (d) Screen Timeout

Storage

- View the SD card and phone memory usage.
- Allows the removal or formatting of the SD card.
- Allows selection of the default memory.

Battery

35

- General power usage

Apps

- Manage applications - Manage and delete installed applications.
- Running services - Press any of the services listed in the two-button operation box. Press the 'Stop' button to stop any of the services listed and removes from the "running services" list.

Location Access

- Use wireless - Use wireless services to find locations in applications.
- When using the GPS satellite positioning, set accuracy to street level (Cancel it to save battery).

Security

36

Set up screen locks: Use a pattern, PIN or password to lock the screen.

- Pattern: The first time there will be simple unlock instructions and examples. Click “next step” to continue the security pattern step.
- PIN: Enter PIN number to unlock the screen.
- Password: Set password to unlock the screen.

You may stop the security feature at any time.

Set up SIM card PIN lock

- SIM card PIN (Personal Identification Number) is used to prevent unauthorized use of SIM cards.

To change a blocked PIN code, you will need to unlock the SIM lock then go to the Change Password screen. The phone will automatically prompt you enter the old PIN code and ask to enter a

new PIN code twice. The phone will then prompt you that the change was successful. If you enter the PIN incorrectly three times, the SIM and PIN codes will be automatically locked. You will need the PUK code to unlock the phone which is available through your service provider. If you enter the PUK code incorrectly 10 times, the SIM card will be permanently locked. Please see your service provider for a new SIM card.

- Password visible – Make the password visible when it’s typed.
- Use security credentials - Allow applications to visit security credentials or other credentials.
- Install from SD card - Install the encrypted certificate from SD card.

Language & Input

- Language – Change the language of the phone.

- Custom Dictionary - Add or delete words to the custom dictionary.
- Keyboard Settings – (a) Haptic vibration (b) Haptic tones (c) Capitalizing (d) Speech Input (e) Inputting words (f) Predictive text function (g) Auto-Text (h) Input keyboard method



Backup & reset

- Backup Data – Will back up all application data, WLAN passwords, and other settings to Google's servers
- Restore to Factory Settings - Clear all data stored on the phone.



Date & Time

- Automation - Use date and time provided by Network.
- Date and Time adjustment.

39

- Time Zone - Select Time Zone according to where your location.
- Select Date Format - There are 3 kinds of formats you can choose from: Month-Day-Year, Day-Month-Year and Year-Month-Day, and Year-Month-Day which is the default setting



Schedule Power On & Off

- Schedule power on and off



Accessibility

- Power button ends call
- Speak Passwords
- Touch Delay



Developer Options

40

If the phone does not display Developer options, to access: Press 'Build number' seven (7) times in the about phone tab in settings.

- The developer options gives access to USB Debugging and other developer options

About Phone

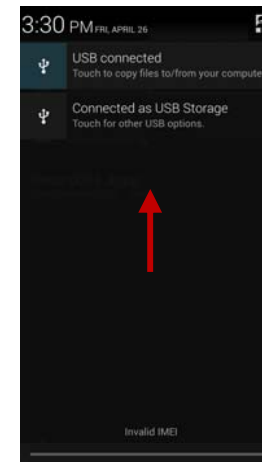
- You can check the information on status and remaining power
- You may periodically check for any software or firmware updates through the System Updates option.

Storage

Connect the phone with the USB cable provided. Once connected, a connection icon will appear in the status bar. Slide down bar and click on connection icon. Once in the connection mode interface,

41

select USB mass storage or another option and turn on from the connection screen.



42



Some system settings and user interface (UI) options may vary depending on SW version.

FCC Statement:

1. This device complies with Part 15 of the FCC Rules. Operation is subject to the following two conditions:
 - (1) This device may not cause harmful interference.
 - (2) This device must accept any interference received, including interference that may cause undesired operation.
2. Changes or modifications not expressly approved by the party responsible for compliance could void the user's authority to operate the equipment.

NOTE:

This equipment has been tested and found to comply with the limits for a Class B digital device, pursuant to Part 15 of the FCC Rules. These limits are designed to provide reasonable protection against harmful interference in a residential installation.

This equipment generates uses and can radiate radio frequency energy and, if not installed and used in accordance with the instructions, may cause harmful interference to radio communications. However, there is no guarantee that interference will not occur in a particular installation. If this equipment does cause harmful interference to radio or television reception, which can be determined by turning the equipment off and on, the user is encouraged to try to correct the interference by one or more of the following measures:

Reorient or relocate the receiving antenna.

Increase the separation between the equipment and receiver.

Connect the equipment into an outlet on a circuit different from that to which the receiver is connected.

Consult the dealer or an experienced radio/TV technician for help.

SAR Information Statement

Your wireless phone is a radio transmitter and receiver. It is designed and manufactured not to exceed the emission limits for exposure to radiofrequency (RF) energy set by the Federal Communications Commission of the U.S. Government. These limits are part of comprehensive guidelines and establish permitted levels of RF energy for the general population. The guidelines are based on standards that were developed by independent scientific organizations through periodic and thorough evaluation of scientific studies. The standards include a substantial safety margin designed to assure the safety of all persons, regardless of age and health. The exposure standard for wireless mobile phones employs a unit of measurement known as the Specific Absorption Rate, or SAR. The SAR limit set by the FCC is 1.6 W/kg. * Tests for SAR are conducted with the phone transmitting at its highest certified power level in all tested frequency bands. Although the SAR is determined at the highest certified power level, the actual SAR level of the phone while operating can be well below the maximum value. This is because the phone is designed to operate at multiple power levels so as to use only the power required to reach the network. In general, the closer you are to a wireless base station antenna, the lower the power output. Before a phone model is available for sale to the public, it must be tested and certified to the FCC that it does not exceed the limit established by the government adopted requirement for safe exposure. The tests are performed in positions and locations (e.g., at the ear and worn on the body) as required by the FCC for each model. The highest SAR value for this model phone when tested for use at the ear is **0.413W/Kg** and when worn on the body, as described in this user guide, is **0.213W/Kg**(Body-worn measurements differ among phone models, depending upon available accessories and FCC requirements). The maximum scaled SAR in hotspot mode is **0.213W/Kg**. While there may be

differences between the SAR levels of various phones and at various positions, they all meet the government requirement for safe exposure. The FCC has granted an Equipment Authorization for this model phone with all reported SAR levels evaluated as in compliance with the FCC RF exposure guidelines. SAR information on this model phone is on file with the FCC and can be found under the Display Grant section of <http://www.fcc.gov/oet/fccid> after searching on

FCC ID: 2ACFG-U402 Additional information on Specific Absorption Rates (SAR) can be found on the Cellular Telecommunications Industry Association (CTIA) web-site at <http://www.wow-com.com>. * In the United States and Canada, the SAR limit for mobile phones used by the public is 1.6watts/kg (W/kg) averaged over one gram of tissue. The standard incorporates a substantial margin of safety to give additional protection for the public and to account for any variations in measurements.

Body-worn Operation

This device was tested for typical body-worn operations. To comply with RF exposure requirements, a minimum separation distance of 10mm must be maintained between the user's body and the handset, including the antenna. Third-party belt-clips, holsters, and similar accessories used by this device should not contain any metallic components. Body-worn accessories that do not meet these requirements may not comply with RF exposure requirements and should be avoided. Use only the supplied or an approved antenna.