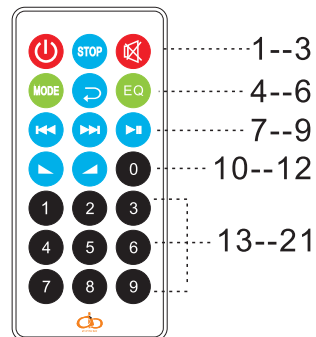




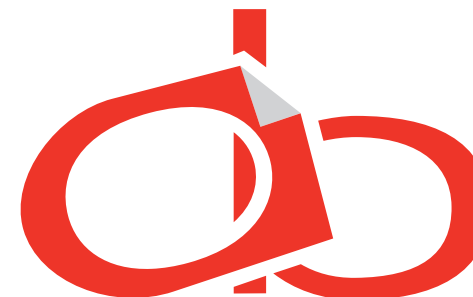
A17-P1226BNF REMOTE CONTROL

1. STANDBY: Make the unit to be standby mode.
2. STOP: The track or USB flash drive or TF card.
3. Mute: Mute the track for USB/TF.
4. Input Mode Button: Toggle between USB, TF, FM, Bluetooth.
5. REP: Repeat the playing track.
6. EQ: Select EQ mode.
7. Previous Track: Select pervious channel.
8. Next Track: Select next channel.
9. PLAY/PAUSE
10. VOL-: Reduce the master volume
11. VOL+: Incerase the master volume
- 12-21. KEY Number for selecting the certain track for USB flash drive or TF card.



A17-P1226BNF CONTROL REMOTO

1. STANDBY: Asegúrese que la unidad sea el modo Stand by.
2. Stop: La unidad flash pista o USB o tarjeta TF.
3. Mute: Silenciar la pista para USB / TF.
4. Input Botón de modo: Alternar entre USB, TF, FM, Bluetooth
5. REP: Repetir la pista del juego.
6. EQ: Seleccione el modo EQ.
7. PreviousTrack: Seleccionar canal permeable.
8. Next Track: Seleccionar el próximo canal.
9. PLAY / PAUSE
10. VOL-: Reducir el volumen principal
11. VOL +: Incerase el volumen principal
- 12-21. KEY Número: para selectiong la pista determinada por unidad flash USB o tarjeta TF.



all of the best

12"*2 Woofer

BLUETOOTH / RECORDING/MEMORY CARD



A17-P1226BNF

POWERED HIFI SOUND SYSTEM



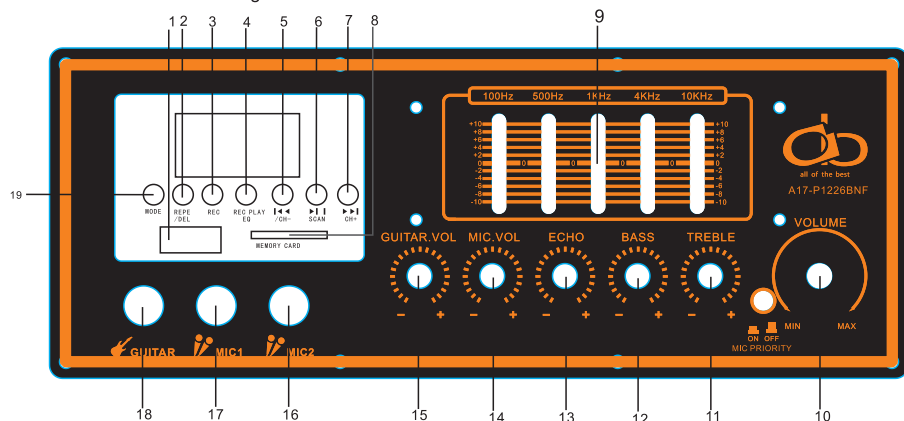
WARNING!

TO REDUCE THE RISK OF ELECTRIC SHOCK, DO NOT REMOVE THE COVER ON THIS SPEAKER. THERE ARE NO USER-SERVICEABLE PARTS INSIDE. REFER ALL SERVICING TO A QUALIFIED TECHNICIAN

The lightning flash with arrowhead symbol within an equilateral triangle is intended to alert the user to the presence of dangerous voltage within the product's enclosure that may be of sufficient magnitude to constitute a risk of electric shock to humans. Users should exhibit extra safety when this symbol appears in this instruction manual and follow all precautions as they are stated.

17-P1226BNF BLUETOOTH

Bluetooth Mode: Open the bluetooth of phone. Find the bluetooth name of the unit called "AOB" to connect. After a successful match, you can play the music from speaker. You won't need reconnect the Bluetooth when switching mode.

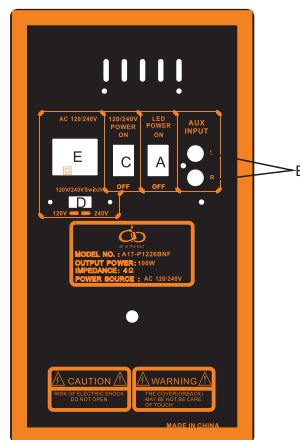


A17-P1226BNF Front PANEL

1. MEMORY CARD SLOT FOR USB INPUT
2. REPE/DEL: Recoding repeat, Press again to delete file
3. REC: Press to start record the micriphone input talking
4. REC PLAY/EQ: Recording files play, Press again transfer to remote control EQ Mode
5. CH-: When Memory card input, press to go for previous track
6. SCAN: Check the memory card chapter
7. CH+: GO for next track
8. SD/MMC: Memory Card input
9. FIVE Brands EQ control
10. Master Volume: Adjust from min to MAX
11. Treble :Adjust from min to MAX
12. BASS: Adjust from Min to MAX
13. ECHO: Adjust from Min to MAX
14. Mic VOL: Microphone volume from Min to MAX
15. Guitar VOL: Guitar volume from Min to MAX
- 16/17/18 Mic: Wired Micophone inoput
19. MODE: Bluetooth/Memory card MODE Selection

A17-P1226BNF BACKSIDE PANEL

- A. Led light Power ON/OFF
- B. AUX INPUT : Output the signal of right speaker
- C. Power on/OFF
- D. 120V-240V Selection
- E. Power source jack

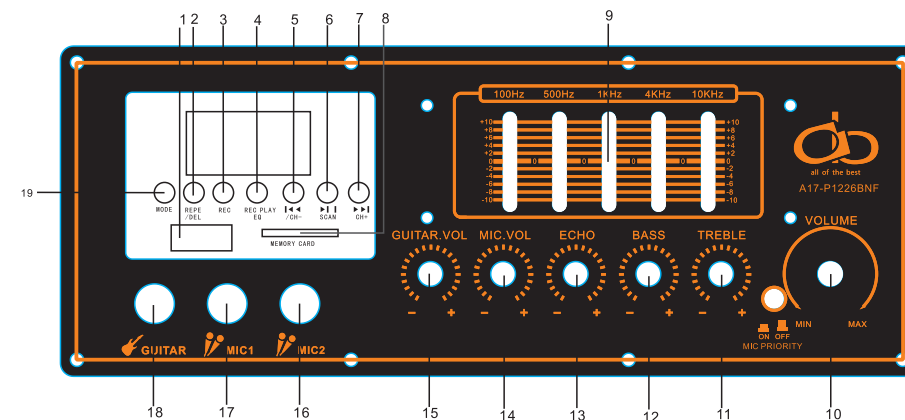


Advertencia!

PARA REDUCIR EL RIESGO DE DESCARGA ELÉCTRICA, NO quite LA CUBIERTA EN ESTE ALTAVOZ. NO HAY PIEZAS QUE EL USUARIO EN EL INTERIOR. Para cualquier reparación a un técnico calificado El símbolo del rayo con punta de flecha dentro de un triángulo equilátero pretende alertar al usuario de la presencia de voltaje peligroso en el interior del producto que puede ser de magnitud suficiente para constituir un riesgo de descarga eléctrica para las personas. Los usuarios deben exhibir seguridad adicional cuando este símbolo aparece en este manual de instrucciones y siga todas las precauciones, ya que se presentan

A17-P1226BNF BLUETOOTH

Modo de Bluetooth: Abra el bluetooth de moilephone. Find el nombre del bluetooth de la unidad llamada "AOB" para conectarse. Después de una persona compatible, puede reproducir la música de los altavoces. Usted no tendrá que volver a conectar el Bluetooth cuando el modo de conmutación.

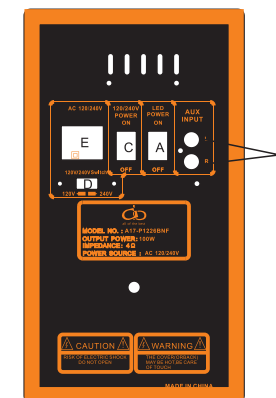


A17-P1226BNF panel frontal

1. USB: Ranura USB PARA ENTRADA USB
2. REPE / DEL: Nueva codificación de repetición, pulse de nuevo para eliminar el archivo
3. REC: Pulse para empezar a grabar la entrada Micriphone hablarJUEGO
4. REC PLAY/EQ: Los archivos de grabación de reproducción, pulse de nuevo la transferencia a modo EQ control remoto
5. CH-: Cuando la entrada USB o tarjeta SD, pulse para ir a la pista anterior
6. SCAN: Comprobar el capítulo USB / SD
7. CH +: ir a por la siguiente pista
8. SD/MMC: Entrada de tarjeta SD
9. Control FIVE marcas EQ
10. Master Volumen: Ajuste del mínimo al máximo
11. Agudos: Ajuste del mínimo al máximo
12. BASS: Ajuste del mínimo al máximo
13. ECHO: Ajuste del mínimo al máximo
14. Mic VOL: Volumen del micrófono del mínimo al máximo
15. Guitar VOL: Volumen de la guitarra del mínimo al máximo
- 16/17/18 Mic: Wired inoput micophone
19. MODE: selección del modo / USB / SD Bluetooth

A17-P1226BNF panel lateral de nuevo

- A. Led de alimentación Luz ON / OFF
- B. ENTRADA AUX: Salida de la señal del altavoz derecho
- C. Botón de encendido / apagado
- D. 120V-240V Selección
- E. fuente de alimentación Jack



FCC Caution.

§ 15.19 Labelling requirements.

This device complies with part 15 of the FCC Rules. Operation is subject to the following two conditions: (1) This device may not cause harmful interference, and (2) this device must accept any interference received, including interference that may cause undesired operation.

§ 15.21 Information to user.

Any Changes or modifications not expressly approved by the party responsible for compliance could void the user's authority to operate the equipment.

§ 15.105 Information to the user.

Note: This equipment has been tested and found to comply with the limits for a Class B digital device, pursuant to part 15 of the FCC Rules. These limits are designed to provide reasonable protection against harmful interference in a residential installation. This equipment generates uses and can radiate radio frequency energy and, if not installed and used in accordance with the instructions, may cause harmful interference to radio communications. However, there is no guarantee that interference will not occur in a particular installation. If this equipment does cause harmful interference to radio or television reception, which can be determined by turning the equipment off and on, the user is encouraged to try to correct the interference by one or more of the following measures:

- Reorient or relocate the receiving antenna.
- Increase the separation between the equipment and receiver.
- Connect the equipment into an outlet on a circuit different from that to which the receiver is connected.
- Consult the dealer or an experienced radio/TV technician for help.