

Wireless 2.4G



# T@bilet

User Manual

Model UG6370

# UGEE

# Index

Usage Precautions	1.
Before Use	5.
Connections	7.
Tablet Part Name	8.
How to Setup	11.
Replacing the pen battery	13.
Replacing the pen nibs	14.
Description of tablet Hot Key Function	15.
Check Tablet	16.
Operating tablet	17.

How to connect more tablets	21.
How it work with Ink Application	25.
Info XPPEN -Write over any application	31.
Troubleshooting	32.
Product Specifications	34.

# Usage Precautions

---

## About radio waves used by this product

This product uses radio waves on the 2.4 GHz band. When using this product, a radio station license is not necessary. However, please note the following cautions.

### *Do not use near the following:*

- Microwave ovens, industrial, scientific or medical equipment, such as pacemakers
- In-factory radio stations for mobile unit identification systems (radio stations that require a license) used in production lines of factories.
- Specified low power radio stations (radio stations that do not require a license)
- IEEE802.11g/b wireless LAN units

When this unit is used near any of the equipment mentioned above, it is possible that electric wave interference could occur.

## About wireless equipment used on the 2.4 GHz band

This frequency bandwidth is the same as for industrial, scientific, and medical equipment such as microwave ovens, mobile unit identification systems (radio stations that require a license) used in factory production lines, and specified low-power radio stations (radio stations that do not require a license).

- Before using this device, check that there are no radio stations for mobile unit identification systems or specified low-power radio stations nearby.
- If this product emits radio waves which interfere with in-factory radio stations for mobile unit identification systems, cease use immediately and stop generating the radio waves. For information on countermeasures, etc. (for example, erecting partitions), contact one of our sales departments whose details are provided at the end of this manual.
- If this unit emits radio waves which interfere with specified low-power radio stations used for mobile unit identification systems, or causes similar problems, contact one of our sales departments whose details are provided at the end of this manual.

## Replacing the battery

If the unit can only be used for an extremely short time or the power does not come on, the alkaline battery has reached the end of its service life.

Please purchase a new battery from your local store -- alkaline battery (AA size) or (AAA size).

## About the operating environment and storage

This model is for indoor use only. It cannot be used outdoors.

- Do not place the product in a damp or dusty location, in a location exposed to the sea breeze, or in an area exposed to high vibration.

The operating environment conditions are as follows.

Temperature: 0 to 40°C

Humidity: 30 to 90% (no condensation)

- Do not store in a location exposed to direct sunlight or near to heating equipment. Discoloration, Browning or malfunctions could result.

## Maintenance

Remove the connected cable and the alkaline battery, and store this product in a location that is not subject to humidity or moisture.

- Remove any dirt from the product with a soft, dry cloth.
- To remove stubborn dirt, dilute some detergent in water, dip a soft cloth in the water, and then ring it out before using it to wipe away the dirt. Do not use any volatile solvents such as thinner or benzene.

# Before Use

---

Thank you very much for purchasing this product.

Please read this manual carefully to make suitable use of this product. Also, please be sure to refer to any supplemental information included with this product.

This product is an educational tool for making lessons using XP-PEN more enjoyable and easier to understand.

The product has various indispensable features for teaching more effective lessons.

Because you can draw directly onto the computer or any projector image, you can directly communicate the important points that cannot be explained fully just by display.

The USB wireless communication, you are free to draw up to 15 meters away from the computer.

## System requirements

**Computer model:** IBM PC/AT compatible

**Operating system:** Microsoft Windows XP Home Edition / Professional SP2 (32bit)

Microsoft Windows Vista Home Basic / Home Premium / Business /  
Enterprise / Ultimate SP1 (32bit)

Microsoft Windows 7 Starter / Home Premium / Professional / Ultimate (32bit)

**CPU:** Intel Core 2 Duo 2 GHz equivalent or higher

**Memory:** 2 GB or higher

**Hard disk:** 1 GB or higher

**Video Board:** Correspond to Microsoft DirectX 9.0c

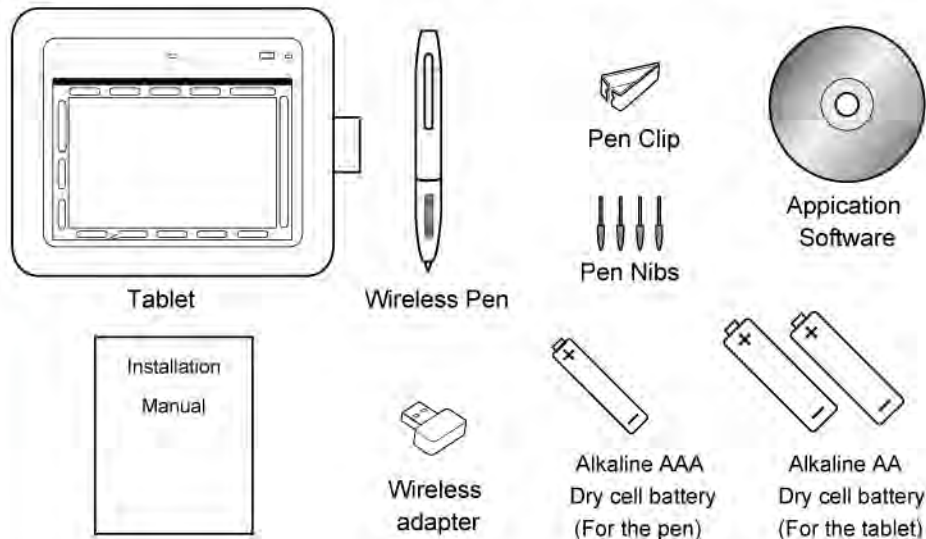
**USB:** USB 2.0

### Caution:

- If a sound device cannot be used, some of the functions may not operate.
- Operation is not guaranteed for all computer environments.

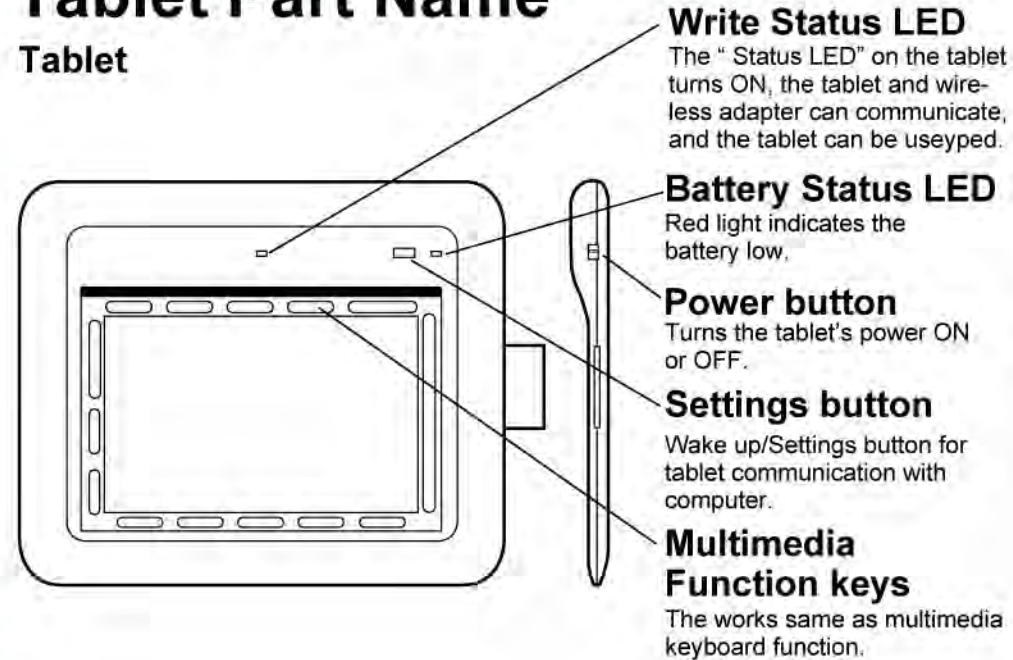
# Connections

The product's package has the following contents. Contact your dealer if any of the following items are not included in the package you purchased.



# Tablet Part Name

## Tablet





## Tablet base

### Power port

Connect the computer for the tablet's power via a USB cable.

### Battery box

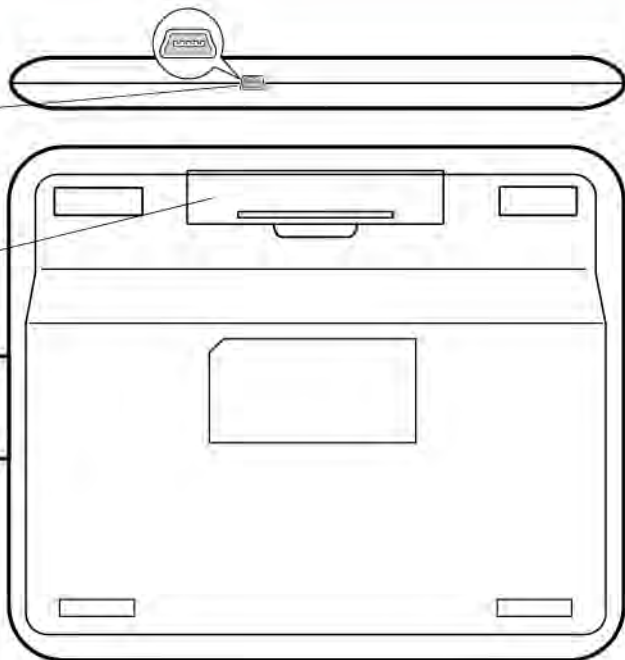
Only install an alkaline battery made for this product.

### Caution:

Only open when absolutely necessary.

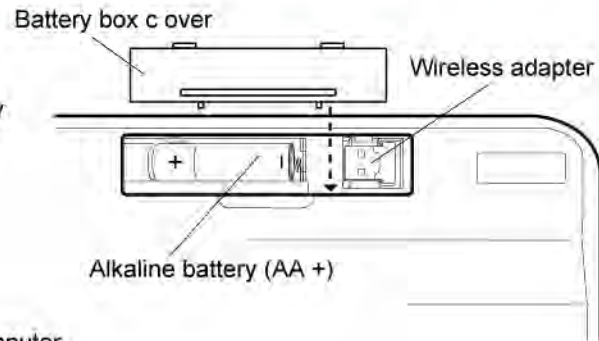
### Pen Holds

Holds the pen.



## Change battery

Install the supplied alkaline battery in the battery box on the base of the tablet.



## Battery low

When battery low connect the computer and the tablet via a USB cable for power.

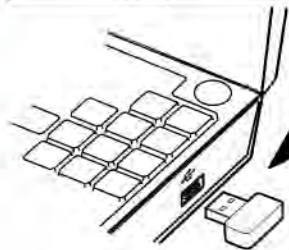
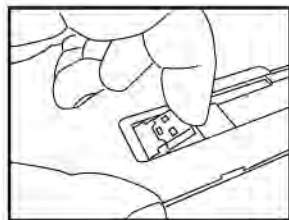


### Caution:

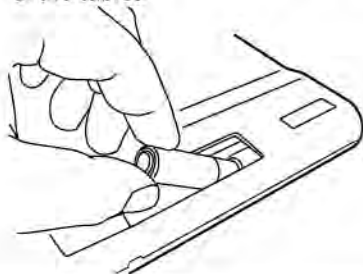
Do not remove wireless adapter.

# How to Setup :

- 1 Connect the wireless adapter to the computer's USB port form box on the base of the tablet.



- 2 Install the supplied two alkali andne (AA+) battery in the battery box on the base of the tablet.



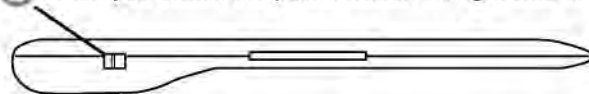
### Caution:

Note the insertion direction of the alkaline battery. Only open the battery box when necessary.

Remove the dry cell battery if the tablet or pen will not be used for a long time.

## Turn on the tablet.

- 3 When you switch the power button on right side of tablet.

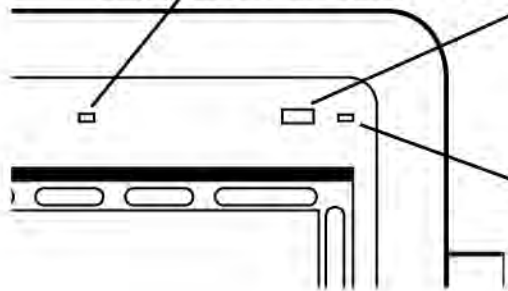


ON ← → OFF

### Caution:

Please to follow direction to turn ON or OFF tablet's power.

- 3 The "Status LED" flashes at high speed. When Power turn "ON"



- 4 Press "Wake up/Wireless settings" button for tablet communication with computer.

\*\* The "Status LED" on the tablet is on flashes repeatedly. That tablet is communication with computer.

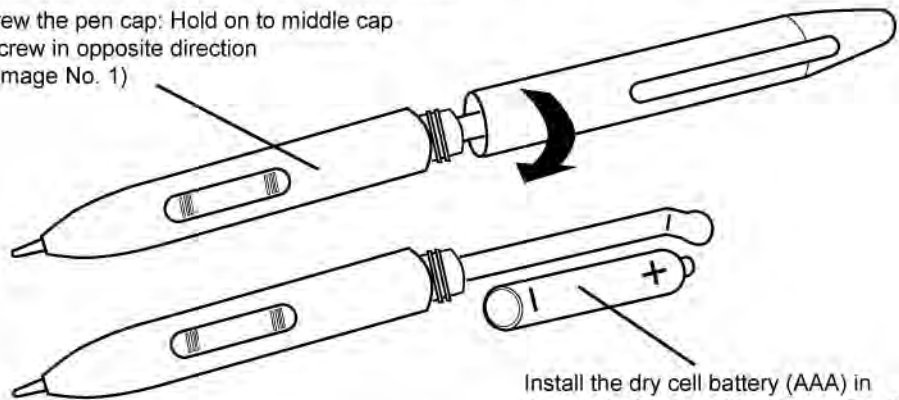
\*\* If the Power LED is lit (RED), there is not enough charge in the battery. Change the battery.



# Replacing the pen battery

This occurs when the batteries run low and need replacing. Remove the top of the pen and replace the batteries with fresh ones, negative pole first (as shown). Replace the pen top.

Unscrew the pen cap: Hold on to middle cap and screw in opposite direction (See image No. 1)



Install the dry cell battery (AAA) in the pen before use. (See image No. 2)

\*\* Pay attention to the polarity (+/-) of the dry cell battery.

# Replacing the pen nibs

The pen tip (nib) will wear with normal use. Excessive pressures will cause it to wear sooner. Replace the nib when it gets too short.

