

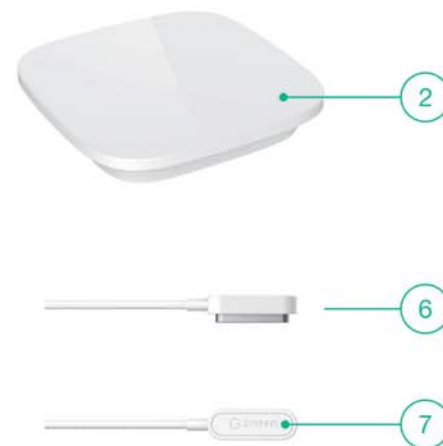
GYENNO CUP

Instructions

Model Name: GH3100

| Product Overview

GYENNO CUP is a smart cup with a LED screen, which can realize the intelligent monitoring personal water drinking and health alert, and have interaction function. At the same time, as the "Personal Information Station" on personal desktop, it can post important real-time information which can be seen quickly at a glance.



- 1 Body of the cup
- 2 Cup lid
the lid is connected to the cup body by magnet
- 3 Charging pins
using magnetic charging interface of the GYENNO standard with 5 charging pins
- 4 Display screen
the screen is used to display a series of information such as time, calendar, weather and other life information and interaction information
- 5 Indicator light
- 6 GYENNO Safepin Cable
- 7 Reset button

Packing List

Main body of the cup x1, Cup lid x1, GYENNO Safepin Cable x1, Instruction booklet x1.

Main Functions

* All pictures are the result of the schematic diagram, the concrete display effect, please take the actual situation as the standard.



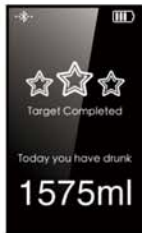
Digitalization

Weather, calendar, clock and life tips make it a daily life information station. Real-time weather and temperature will be automatically synchronized to the cup's screen.



Display

GYENNO Cup can display the current water temperature and how much water to be drunk for the aim you set.



Incentive

When you achieve the target of water drinking, you will receive a "target achievement" prompt from the cup, which is to give you a full sense of achievement.



Cleaning Reminding

When the cup has been placed without moving for too long, then the water in the cup may have been out of date and inappropriate to drink, at this time, GYENNO Cup will remind you and suggest you to clean the cup.



Favorite Water Temperature

Do not want to miss your favorite water temperature? You can set the water temperature to remind. When the temperature of the water in the cup drops to your set range, you will receive a sweet reminding from GYENNO Cup!



Water Temperature Alert

When temperature of the water in the cup is more than the set temperature alert while you hold up the cup, it will warn you not to drink in way of breathing lamp, vibration or warning sound (you can set which way to use).



Water Drinking Reminding

Always forget to drink water? You can set the time interval you like to drink water, every other time GYENNO Cup will remind you that it is time to drink water.



Warm & Sweet Interaction

If a friend is found on GYENNO Health not to drink water for a long time, you can send water drinking reminder to him, and the reminding message will be pushed to his cup screen directly.

Materials and Design

1. The screen

- a) Inner screen: Sharp Memory LCD screen
- b) Outer screen: Corning Gorilla Glass of the 3rd generation

2. Antibacterial & environmental friendly materials

- a) Inner container: Tritan™ container, with Sanitized® material added, which has antibacterial function.
- b) Shell: Tritan™ shell containing no BPA, which has passed the FDA certification, and is the specified materials for baby products in the European and American area.

3. GYENNO Safepin Cable

The magnetic connector of the cable provides a safe and convenient charge solution. To keep it safe, the connector is held in place magnetically so that if someone tripping over the cord, it will pull out of the socket without damaging the connector or the power socket, or pulling the cup off the surface on which it is located. In addition, the magnetic is also designed to prevent the connector from fraying or weakening over times.



Use of the Product

* The cup is turned off by default when leaving factory, and will automatically power on after the GYENNO Safepin Cable ⑥ is connected, It is not necessary to turn it on/off manually. There is no ON/OFF button for the cup. You can press the reset button ⑦ on the GYENNO Safepin Cable ⑥ to reset the cup. If battery is going to run out, it will shutdown automatically, please recharge in time.

* Please keep charging pins ③ dry before charging to avoid short circuit.

1. Charging

It takes about 1.5 hours to recharge. Please charge the product when using it for the first time or when the battery is going to run out.

- 1.1 Connect the GYENNO Safepin Cable ⑥ to the interface of the the charger (need to be self prepared) or the USB interface of electronic equipment;
- 1.2 Connect one end of the GYENNO Safepin Cable ⑥ to the charging pins ③ ;
- 1.3 When charging, a sign of charging  can be seen on the screen ④ ;
- 1.4 When fully charged, the charging sign  will disappear from the display screen ④ .

2. Connecting to the GYENNO Health

* Please make sure that your mobile phone system is Android4.3 or iOS7.0 or above, and supports Bluetooth 4.0.

- 2.1 Download GYENNO Health APP: If you are an iPhone user, please search GYENNO Health in the apple App Store; If you are an android user, please search GYENNO Health in the major application market like Txappcenter and Peasecod, or you can scan the QR code to download from the application download page of www.gyenno.com .
- 2.2 Complete the user registration process according to the app user registration wizard.

- 2.3 Visit the app setting page, select "New Equipment", and scan nearby new equipment to add your cup. After that you can view and set up the related information in "My Cup".
- 2.4 If your cup can not be searched, the following five kinds of situations are possible:
- ①Your cup is too far away from your mobile phone which is beyond the connection range of the Bluetooth. Please adjust the position of both and try again;
 - ②The power of the mobile phone or cup is insufficient. Please recharge and try again;
 - ③Bluetooth version is too low. Please use smartphone with Bluetooth whose version is above 4.0;
 - ④The network problems, the signal is poor, and the cell phone is not linked on the network. Please check the mobile phone network;
 - ⑤The stability problem of the Bluetooth of the cell phone system. Please reset the Bluetooth or cell phone and try again;
 - ⑥Other problem, please contact GYENNO customer service.
- 2.5 If your cup is searched but cannot be connected, it might be because:
- ①Your cup is binding with other devices. Please try again after the unbinding;
 - ②Your cup is beyond the range of the connection. Please adjust the relative position of the mobile phone and the cup;
 - ③The network problems, the signal is poor, and the cell phone is not linked on the network. Please check the mobile phone network.

3. Upgrade

The firmware of GYENNO Cup can be upgraded. Enter "Settings - My equipment - My cup - Cup upgrade" to upgrade the firmware. Before upgrading the cup, please make sure that the cup and the mobile phone has enough power.

Please visit <http://www.gyenno.com/cup.html> for more information about GYENNO Cup.

Maintenance and Repair

GYENNO Cup conforms to the requirements of the life waterproof IPX7 standard, and both of its inside and outside can be washed. However, the heavy wash to the bottom shell of the cup is not recommended and the cup cannot be immersed in the water.

The environment temperature to use GYENNO Cup normally is between - 10 °C and 50 °C. Please pay attention to keep GYENNO Cup away from extreme environments, such as strong heat, low temperature and strong magnetic field, so as not to damage the cup.

The warranty period is one year or subject to the law where you purchase it.
If you need maintenance service, please call GYENNO customer service: 4008-033-037.

Matters needing attention

GYENNO Cup is not medical equipment. The battery life, charging times and screen life might be different due to specific usage and settings. Device color may be vary and change with time. Packing weight varies due to manufacturing process.

Please visit: <http://www.gyenno.com/cup.html> for more information about GYENNO Cup.

Contact Information

If you need any service or information, or have any questions, please contact us:

GYENNO official website : www.gyenno.com

Telephone: 0755-23917859

Manufacturer: authorized production by Shenzhen Zhenluo Technology Co., LTD.,

Address: Room 201, Building B, Industry-university-research cooperation base of Nanjing University, No.6 Yuexingsan Road, Southern District of Shenzhen High-tech Zone.

Product certification

This device complies with part 15 of the FCC Rules.

Operation is subject to the following two conditions:

- (1) This device may not cause harmful interference, and
- (2) This device must accept any interference received, including interference that may cause undesired operation.

Note: This equipment has been tested and found to comply with the limits for a Class B digital device, pursuant to Part 15 of the FCC Rules.

These limits are designed to provide reasonable protection against harmful interference in a residential installation.

This equipment generates uses and can radiate radio frequency energy and, if not installed and used in accordance with the instructions, may cause harmful interference to radio communications.

However, there is no guarantee that interference will not occur in a particular installation. If this equipment does cause harmful interference to radio or television reception, which can be determined by turning the equipment off and on, the user is encouraged to try to correct the interference by one or more of the following measures:

Reorient or relocate the receiving antenna.

Increase the separation between the equipment and receiver.

Connect the equipment into an outlet on a circuit different from that to which the receiver is connected.

Consult the dealer or an experienced radio/TV technician for help.

Warning: Changes or modifications to this unit not expressly approved by the party responsible for compliance could void the user's authority to operate the equipment.

FCC Radiation Exposure Statement

The device has been evaluated to meet general RF exposure requirement. The device can be used in portable exposure condition without restriction.

CE 0681  RoHS