

FCC Notice

This device complies with Part 15 of the FCC Rules. Operation is subject to the following two conditions:

- (1) this device may not cause harmful interference.
- (2) this device must accept any interference received, including interference that may cause undesired operation.

Notice:

This equipment has been tested and found to comply with the limits for a Class B digital device, pursuant to Part 15 of the FCC Rules. These limits are designed to provide reasonable protection against harmful interference in a residential installation.

This equipment generates, uses, and can radiate radio frequency energy, and if not installed and used in accordance with manufacturer's instructions, may cause harmful interference to radio communications. However, there is no guarantee that interference will not occur in a particular installation.

If this equipment does cause interference to radio or television reception, which can be determined by turning the equipment off and on, the user is encouraged to try to correct the interference by one or more of the following measures:

- Reorient or relocate the receiving antenna.
- Increase the separation between the equipment and receiver.
- Plug the computer into a different outlet so that the two devices are on different branch circuits.
- If necessary, the user should consult the dealer or an experienced radio/television technician for additional suggestions.

Warning:

Shielded interface cables must be used in order to comply with emission limits. Changes or modifications not expressly approved by the party responsible for compliance could void the user's authority to operate the equipment.

CSA Notice:

This digital apparatus does not exceed the Class B limits for radio noise emissions from digital apparatus set out in the Radio Interference Regulations of the Canadian Department of Communications.

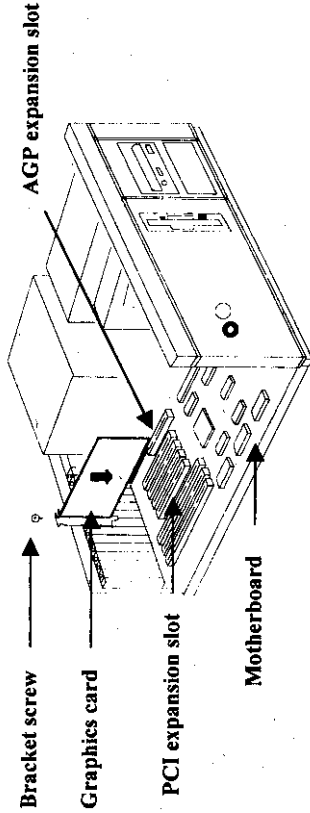
Table of Contents

<i>Chapter 1 Overview</i>	1
<i>Chapter 2 Hardware Installation</i>	2
<i>Chapter 3 Software Installation</i>	4
<i>Chapter 4 Display Utility for Windows</i>	6
<i>Chapter 5 Technical Information</i>	8
<i>Chapter 6 Trouble Shooting</i>	10

2 Hardware Installation

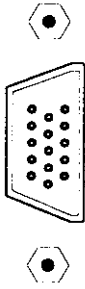
Insert your Graphic Card

Remove the cover for the slot you intend to use and save the screw for the mounting bracket. Then, pick up the Graphic card and position it over the expansion slot you've chosen. Push the card with firmly and evenly until it's fully seated in the slot. Replace the screw to secure the bracket of the Graphic card to the computer chassis.



Connect the monitor

Plug your monitor cable into the monitor connector on your Graphic card. Make sure the other end of the monitor cable is properly connected to your monitor:



Monitor connector (blue)

DFP Host Receptacle Connector

3

Software Installation

CAUTION!

- Before installing the Display driver, make sure your Windows 95/98 is installed in VGA mode and work fine.
- For Windows 95 user, please install the DirectX before you want to play the MPEG Movie Player.
- To use an AGP graphics card with NT4.0, you may need to pre-install NT with Service Pack 3 (SP3) before installing the AGP card.

Before You Begin

If your system is running Windows 95/98/NT, the **New Hardware Found** dialog box will appear after restart. Select **Driver** from disk provided by hardware manufacturer, click **OK**, then follow all on-screen instructions. If the **New Hardware Found** dialog box does not appear, follow the instructions below.

Setup VGA Mode

Click the right mouse button anywhere on the Windows 95/98/NT desktop and select **Properties** from the pop-up menu that appears on screen. Select **Settings** | **Change Display Type** (If you use the OSR2, please select **Settings** | **Advanced Properties**). If you use the Windows 98, please select **Settings** | **Advanced**) and then click the **[Change]** button for **Adapter Type**. When the **Select Device** dialog box appears on the screen, please select **[Standard display types]** from the manufactures and select **Standard Display Adapter (VGA)** from the Models then click **OK** button.

Install Software Driver

1. Turn on your computer and start Windows 95/98/NT.
2. Insert the **Driver CD** into your CD-ROM driver.
3. Click the **Start** button on the task bar and then select **Run** button.
4. Type **D:\CDSETUP [Enter]** in the **Run** dialog box (where **D:** is the location of your CD-ROM drive).
5. Follow the instructions on screen to complete installation.
6. Finally, restart your computer for the changes to take effect.

Windows 95/98/NT Display Properties

Windows 95/98/NT allows you to select resolution, color depth, refresh frequency and font size using the standard Windows 95/98/NT Display Properties sheet, which can be accessed by right clicking anywhere on the Windows 95/98/NT desktop, and then selecting Properties from the pop-up menu that appears on screen.

3 Software Installation

After you restart your computer for the changes to take effect. Click the right mouse button anywhere on the Windows 95 desktop and select **Properties** from the pop-up menu that appears on screen. Under **Display Properties** screen, select **Settings** button. The Display Properties will be changed as Figure 3-1.

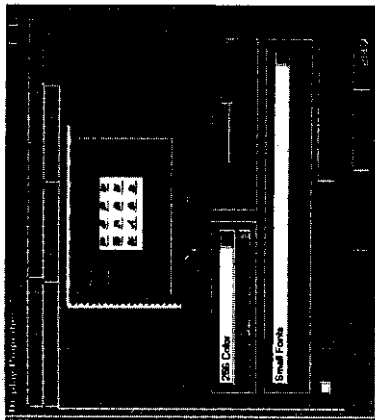


Figure 3-1 for Win95

4 Display Utility for Windows

NOTE: Always use VGA Cards that support TV function. Please do not use any other cards.

LCD for Windows 95

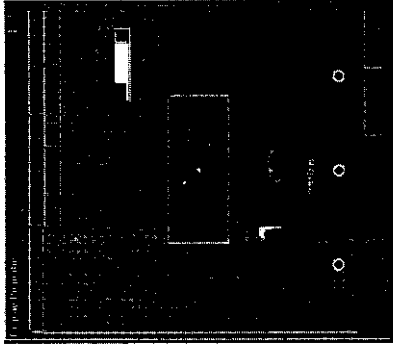


Figure 4-1

Click the right mouse button anywhere on the Windows 95 desktop and select **Properties** from the pop-up menu that appears on screen. In **Display Properties** dialog box, select **Display Device** as Figure 4-1.

As Figure 4-1, if you select **CRT** item, the screen will only be showed on the CRT monitor. If you select **LCD** item, the screen will only be showed on the LCD monitor. However, both of the **CRT** and **LCD** items you select, the screen will be showed on the **CRT** and **LCD** monitors. (Please not select **TV** item, because this **VGA** Card doesn't support **TV** function at present.)

In **Display Properties** dialog box, select **Flat Panel** as Figure 4-2.

As Figure 4-2, if you select the **Display Stretch** check box, it will take full screen on the LCD monitor with high resolution. But this setting will take poor result just because the LCD hardware structure is limited. This is also the question of all kind of the LCD VGA Cards at present.

NOTE: This VGA Card doesn't support TV function. Please do not use any other cards.

Display Memory Configuration
Memory-Resolution/Color

	4MB	
	256 color	16.7M color
640x480	85Hz	85Hz
800x600	85Hz	85Hz
1024x768	85Hz	85Hz
1280x1024	75Hz	-
1600x1200	48(0)Hz	-

	8MB	
	256 color	16.7M color
640x480	85Hz	85Hz
800x600	85Hz	85Hz
1024x768	85Hz	85Hz
1280x1024	75Hz	75Hz
1600x1200	48(0)Hz	-

Switch Settings

If the LCD supports the DDC, the data from DDC will judge the type of LCD automatically. And you have not to set the DIP Switch types. Otherwise, you have to set the Dip Switch types as below when the LCD doesn't support the DDC.

TYPE	SW. No. 1	SW. No. 2	Maximum Resolution
VGA	OFF	OFF	640x480
SVGA	OFF	ON	800x600
XGA	ON	OFF	1024x768
SXGA	ON	ON	1280x1024

Please pay attention to your LCD's type so that you can set the correct switch to show correct information on your screen.

If you don't pay attention to your LCD's type so that you set the incorrect switch to show that will damage your LCD monitor.

LCD for Windows 98

Click the right mouse button anywhere on the Windows 98 desktop and select Properties from the pop-up menu that appears on screen. The Display Properties dialog box will appear, please click Settings item as Figure 4-3. Click "Advanced" icon. In "Trident Cyber 9397DVD Properties" dialog box, all functions are as the same as refer to Win 95.

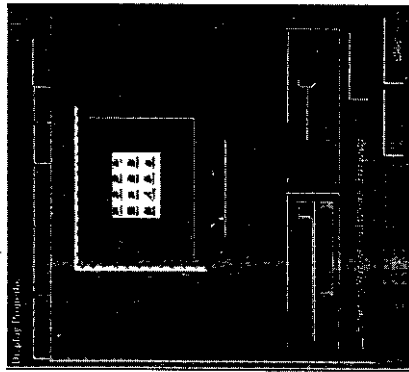


Figure 4-3

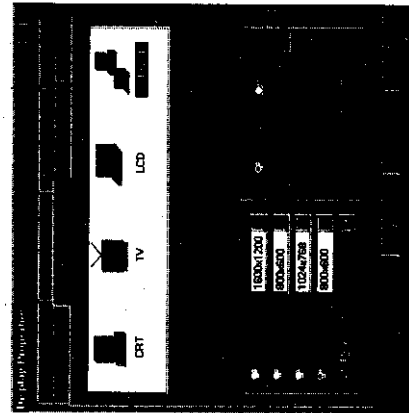


Figure 4-4

LCD for Windows NT4.0

Click the right mouse button anywhere on the Windows NT desktop and select Properties from the pop-up menu that appears on screen. The Display Properties dialog box will appear, in Display Properties dialog box, select Display Device button as Figure 4-4. In this dialog box, you can select the CRT or LCD or both CRT and LCD monitors. You can also change the resolution for each of them under the Display Device dialog box.

Monitor Connector Pin Assignments

Pin no.	Function	Pin no.	Function
1	Red Video	9	+5V
2	Green Video	10	Sync Return (ground)
3	Blue Video	11	NC
4	NC	12	DDC DATA
5	Ground	13	Horizontal Sync
6	Red Return (ground)	14	Vertical Sync
7	Green Return (ground)	15	DDC CLOCK
8	Blue Return (ground)		

DFP Connector Pin Assignments and Description

Pin no.	Signal Name	Description
1	TX1+	TMDS positive differential output, channel 1
2	TX1-	TMDS negative differential output, channel 1
3	SHLD1	Shield for TMDS channel 1
4	SHLDC	Shield for TMDS clock
5	TXC+	TMDS positive differential output, reference clock
6	TXC-	TMDS negative differential output, reference clock
7	GND	Logic Ground
8	+5V	Logic +5V Supply
9	Reserved 9	Reserved do not connect
10	Reserved 10	Reserved do not connect
11	TX2+	TMDS positive differential output, channel 2
12	TX2-	TMDS negative differential output, channel 2
13	SHLD2	Shield for TMDS channel 2
14	SHLD0	Shield for TMDS channel 0
15	TX0+	TMDS positive differential output, channel 0
16	TX0-	TMDS negative differential output, channel 0
17	Reserved 17	Reserved do not connect
18	Reserved 18	Reserved do not connect
19	DDC DAT	DDC2B Data
20	DDC_CLK	DDC2B Clock

Problem: How to take full screen under high resolution LCD screen?

Solution: Please executing the Expand function so that you can take full screen effectively. However, this setting as above will take poor result just because the LCD hardware structure is be limited. This is also the question of all kind of the LCD VGA Cards at present.

Problem: After installation and restarting, Windows 95 informs me that display setting is still incorrect. What can I do?

There may be conflict between previous and current display drivers. This is caused by not complete removal of previous display driver. Try the following steps to remove it:

Solution:

- (1) Use right button of mouse to click on "My Computer" icon on desktop.
- (2) Select "Properties" and "System Properties" box appears
- (3) Click on "Device Manager" tab
- (4) You will see a list of devices on your computer.
- (5) Open "Display adapters" in the list (double click it).
- (6) You will find two (or more) conflicted adapters listed here.
- (7) Remove all previous adapters by selecting them and press "Remove"
- (8) Close Device Manager and restart Windows 95.
- (9) Now display driver will work correctly.

Problem: After installing the driver, Windows 95 doesn't prompt me for restarting and the driver still doesn't work after I reboot it by myself.

You may have installed similar drivers before. Try the following steps to install:

Solution:

- (1) Use right button of mouse to click on "My Computer" icon on desktop.
- (2) Select "Properties" and "System Properties" box appears
- (3) Click on "Device Manager" tab
- (4) You will see a list of devices on your computer.
- (5) If "Display adapters" appears in the list, click it.
If "Display adapters" doesn't appear, jump to step 9 and continue.
- (6) The name of your card will be listed in the box. Double click it.
- (7) The properties box of your card appears. Select "Driver" tab.
- (8) Click "Change Driver..." and follow the installation steps.
- (9) Click "Other devices" you will see your card is listed.
- (10) Click on the name of card, the properties box appears.
Select "Driver" tab.
- (11) Click "Change Driver..." and follow the installation steps.

6

Trouble Shooting

When you need advanced technique service, please Complete this form and FAX to your dealer.

Your name:

Phone :

Product S/N:

PCB NO.:

HARDWARE CONFIGURATION			
Mainboard Chipset:	CPU Speed:	MHz	
Mainboard CPU:	VGA Memory Type:		
Mainboard Memory:	VGA Memory	MB	
Mainboard Brand:	VGA Memory Brand:		
Cache Memory:	KB		
Monitor Type:	Horizontal Freq. :	KHz	to KHz
	Vertical Freq. :	HZ	to HZ
Operating System or Test Programs:			
Application Software:			
Other Cards installed in system:			
Problem Description:			

Printed in Taiwan