



Marine Mount Instructions

⚠ WARNING

See the *Important Safety and Product Information* guide in the GPS device product box for product warnings and other important information.

Garmin® strongly recommends having an experienced installer with the proper knowledge of electrical systems install the device. Incorrectly wiring the power cable can result in damage to the vehicle or the battery and can cause bodily injury.

⚠ CAUTION

Always wear safety goggles, ear protection, and a dust mask when drilling, cutting, or sanding.

NOTICE

The metal contacts on the GPS device and the mount should be kept dry to avoid equipment damage. Use the weather cap on the mount at all times when the unit is

not mounted to keep the metal contacts dry and protected.

To obtain the best performance and to avoid damage to your boat, install the device according to these instructions.

Read all installation instructions before proceeding with the installation. If you experience difficulty during the installation, contact Garmin Product Support.

Tools Needed

- Drill
- Phillips screwdriver
- 9.5 mm ($\frac{3}{8}$ in.) wrench or socket
- 3 bolts or 3 screws:
 - #8 (4 mm) pan-head machine bolts with nuts and washers, and a 5 mm ($\frac{1}{16}$ in.) drill bit
 - #8 (4 mm) pan-head self-tapping screws and a 1.5 mm ($\frac{1}{16}$ in.) drill bit

Mounting Considerations

NOTICE

The swivel base must be mounted using pan-head machine bolts or self-tapping screws. Using screws with countersunk heads can damage the mounting bracket.

The device should be mounted in a location that provides a clear view of the screen and is easy to reach.

The device should be mounted in a location that is sturdy enough to support the mount and device.

The device must be mounted in a location that allows room to route and connect the cables. You should allow at least 8 cm (3 in.) of clearance behind the case.

Mounting the Bracket Assembly

- 1 Separate the swivel base ① from the mount.



- 2 Using the swivel base as a template, mark the pilot hole locations ②.
- 3 Select an option:
 - If you intend to secure the base with machine bolts, drill three 5 mm ($\frac{5}{32}$ in.) holes.

- If you intend to secure the base with self-tapping screws, drill three 1.5 mm ($\frac{1}{16}$ in.) starter holes.

NOTE: Do not make the holes deeper than half of the screw length.

- 4 Secure the swivel base with the bolts or screws ③.



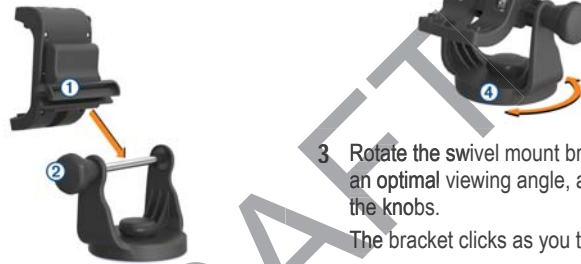
- 5 Place the swivel mount bracket ④ over the swivel base and secure it with the short knob ⑤.

Installing the Mount on the Mounting Bracket

- 1 Align the slot ① on the back of the cradle with the long mounting knob ②,

and slide the cradle into place on the bar.

NOTE: You can turn the long mounting knob to adjust the width of the bracket arms.



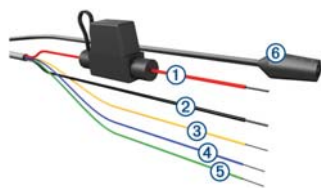
- 2 Adjust the angle of the cradle, and tighten the long mounting knob until the cradle ③ is secure.

- 3 Rotate the swivel mount bracket ④ to an optimal viewing angle, and tighten the knobs.

The bracket clicks as you turn it.

Connecting Power to the Mount

- 1 Select a mounting location based on available power sources, safe cable routing, and an unobstructed view.
- 2 Connect the cables.



Item	Wire Color	Wire Function
①	Red	Power
②	Black	Power
③	Yellow	Serial data input
④	Blue	Serial data output
⑤	Green	Serial ground wire
⑥		Audio jack

- 3 Insulate and secure unconnected wires.

Installing the Device in the Mount

NOTICE

Before you place the device in the mount, ensure that the metal contacts on the device and the mount are dry. Moisture on the contacts causes equipment damage. Use the weather cap to keep the mount cradle dry.

- 1 Place the weather cap ① in the storage area on the mount.



- 2 Place the bottom of your device into the cradle ②.



- 3 Tilt the device back until it snaps into place.

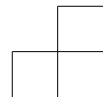
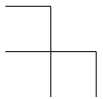
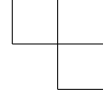
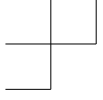
- 4 Using the security screw tool, tighten the security screw ③ on the top of the mount ④.



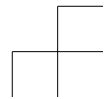
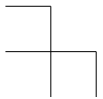
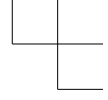
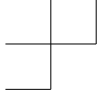
- 3 Lift the device out of the mount.
- 4 Place the weather cap ② on the cradle.

Removing the Device from the Mount

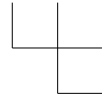
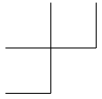
- 1 Loosen the security screw.
- 2 Press the button ① on the side of the mount to release the device.



DRAFT



DRAFT



Garmin® and the Garmin logo are trademarks of Garmin Ltd. or its subsidiaries, registered in the USA and other countries. These trademarks may not be used without the express permission of Garmin.



DRAFT



© 2011–2016 Garmin Ltd. or its subsidiaries
Printed in Taiwan
www.garmin.com/support

July 2016
190-02006-92_0A

