



CM Remote Owners Manual



Instructions to the User for FCC:

This equipment has been tested and found to comply with the limits for a class B digital device, pursuant to part 15 of the FCC Rules. These limits are designed to provide reasonable protection against harmful interference in a residential installation. This equipment generates, uses and can radiate radio frequency energy and if not installed and used in accordance with the instructions, may cause harmful interference to radio communications. However, there is no guarantee that interference will not occur in a particular installation. If this equipment does cause harmful interference to radio or television reception, which can be determined by turning the equipment off and on, the user is encouraged to try to correct the interference by one or more of the following measures:

- Reorient or relocate the receiving antenna.**
- Increase the separation between the equipment and receiver.**
- Connect the equipment into an outlet on a circuit different from that to which the receiver is connected.**
- Consult the dealer or an experienced radio/TV technician for help.**
- It is strongly recommended that the TV be plugged into a separate wall outlet.**

This equipment has been verified to comply with the limits for a class B computing device, pursuant to FCC Rules. In order to maintain compliance with FCC regulations, shielded cables must be used with this equipment. Operation with non-approved equipment or unshielded cables is likely to result in interference to radio and TV reception.

The user is cautioned that changes and modifications made to the equipment without the approval of manufacturer could void the user's authority to operate this equipment.

Information for Canadian Users (IC Notice):

Operation is subject to the following two conditions: (1) This device may not cause interference, and (2) this device must accept any interference, including interference that may cause undesired operation of the device.

Using CM Remote

In remote operations mode, a handheld remote control unit is used to control the CartManager XD, instead of the throttle grips. The operator steers from the front of the line of carts.

1. Make sure that the Emergency Stop button on the CartManager XD is pushed in. This prevents the unit from unexpectedly moving while you are loading carts.
2. Load one cart onto the cart cradles, as shown in the figure at right.
3. Stand at the back of the CartManager XD. Disengage the Emergency Stop button.
4. Turn the key switch to the ON position.
5. Take the remote control unit and move to the side of the front of the cart, facing forward.

NEVER WALK DIRECTLY IN FRONT OF A LINE OF MOVING CARTS OR STAND IN FRONT OF CARTMANAGER XD WHEN THE UNIT IS MOVING!



6. Turn on the Remote Control unit by pressing and immediately releasing the green ON button. The Power Indicator will light while the button is held down.
7. Press and release the HORN button once or twice to alert persons that you are in the area. If the horn does **not** sound:
 - Turn off CartManager XD.
 - Turn on CartManager XD.
 - Press the Remote Control Association button in the upper right corner of the battery charger well on the back of the unit (See page 4).
 - On the remote, press the red button, then the green button. This establishes a new radio link between CartManager XD and the remote.



CartManager XD Remote Control

8. With one hand on the front corner of the cart, press and hold the SLOW (turtle) button. The CartManager XD will begin to move slowly forward.
9. While holding the slow button down, push the front of the cart away from you. The cart and CartManager XD will turn in that direction. Pull the cart towards you to move back the other way.
10. Release the slow button and CartManager XD will stop.
11. Now press and hold the FAST (rabbit) button. CartManager XD will move forward, but much faster than when in SLOW mode.
12. Practice using the remote control to move a single cart.



When you are comfortable in both slow and fast modes, press the red OFF button to shut down the remote control unit.

Remote Control Issues

Changing the Remote Control Batteries

You will need a CR-123A replacement battery. These batteries are usually available wherever batteries are sold.

1. Turn the remote control unit over so that the buttons are facing down.
2. Insert a coin into the slot on the battery cover and turn 90° counter-clockwise to remove the cover.
3. Gently remove the old battery. Make sure to discard in accordance with your company policy.
4. Insert a new CR-123A battery, making sure that the “+” end is facing the top of the remote control unit.
5. Set the battery cover over the battery compartment. Use a coin to turn the cover 90° clockwise until the cover is fully locked.

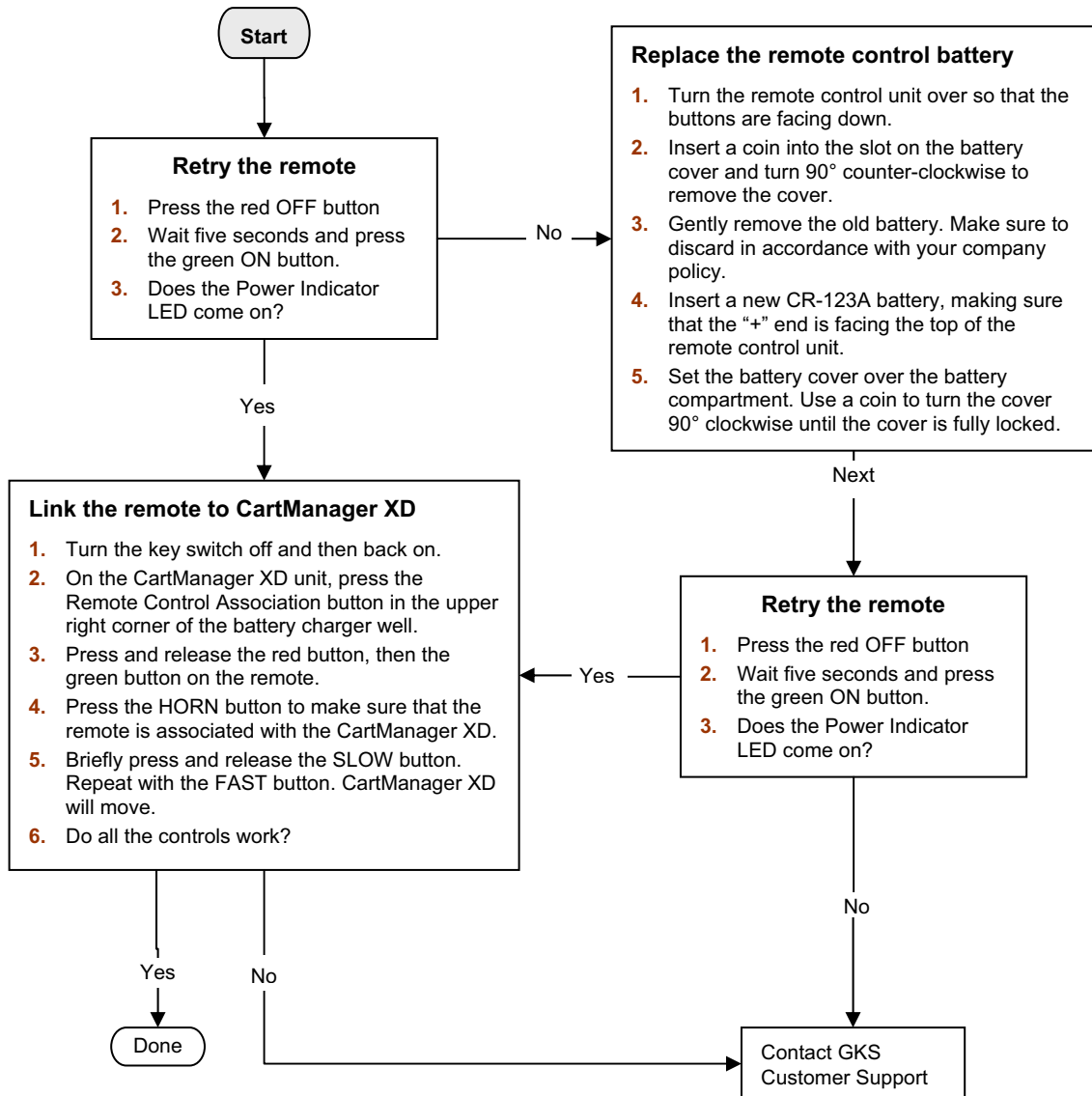


Back of the remote control with battery cover removed.

Remote Control Does Not Work

Use this process to diagnose and correct problems when the remote control unit either does not turn on, or turns on but does not communicate with CartManager XD.

If you are using a new remote for the first time, or using a remote other than the one usually used with a particular CartManager XD unit, follow the steps in the **Link the remote to the CartManager XD** box below to set up a communications link between the remote and the CartManager XD unit.



Contacting Gatekeeper Systems

For more information about CartManager XD training and troubleshooting, or to order replacement parts or report an issue, contact the Gatekeeper Systems Inc. regional Customer Support office nearest to your location.

USA

Gatekeeper Systems, Inc.
2520 N. Great Southwest Parkway
Suite 110
Grand Prairie, TX 75050
(888) 808-9433

Canada

Gatekeeper Systems Canada, Ltd.
272 Galaxy Boulevard
Etobicoke, Ontario
Canada
M9W 5R8
(888) 525-3564

All Other Areas

Gatekeeper Systems SAS
58 rue de Neuilly
Parc des Guillaumes
93130 Noisy Le Sec
France
+33 1 48 54 76 78