

Gear Head, LLC warrants that this product shall be free from defects in materials and workmanship for the reasonable lifetime of the product. If the product is defective, Gear Head, LLC's sole obligation under this warranty shall be at its election, subject to the terms of this warranty, to repair or replace any parts deemed defective. This warranty is for the exclusive benefit of the original purchaser and is not assignable or transferable. THIS WARRANTY IS MADE IN LIEU OF ALL OTHER WARRANTIES, EXPRESS OR IMPLIED, AND ANY IMPLIED WARRANTIES, INCLUDING THE IMPLIED WARRANTIES OF MERCHANTABILITY AND FITNESS FOR A PARTICULAR PURPOSE, ARE LIMITED TO THE TERMS OF THIS WARRANTY, UNLESS OTHERWISE PROHIBITED BY LAW.

Exclusions

To the fullest extent permitted by law, Gear Head, LLC expressly disclaims and excludes from this warranty any liability for damages, including but not limited to general, special, indirect, incidental, consequential, aggravated, punitive or exemplary damages, and economic loss (even if Gear Head™ is informed of their possibility), third party claims against you, including for any loss or damages, and claims or damages related to loss of, or, damage to, your records or data. This warranty does not apply to any product the exterior of which has been damaged or defaced. This warranty will be voided by misuse, improper physical environment, improper repair, acts of God, war or terror, commercial use, and improper service, operation or handling.

Technical Support

Gear Head™ provides Technical Support Monday - Friday from 9:00 am - 5:30 pm Eastern Time. Before calling, please make sure you have available the Model # (located on the front page of your User's Manual) and information regarding your computer's operating system.

Please contact our technicians at

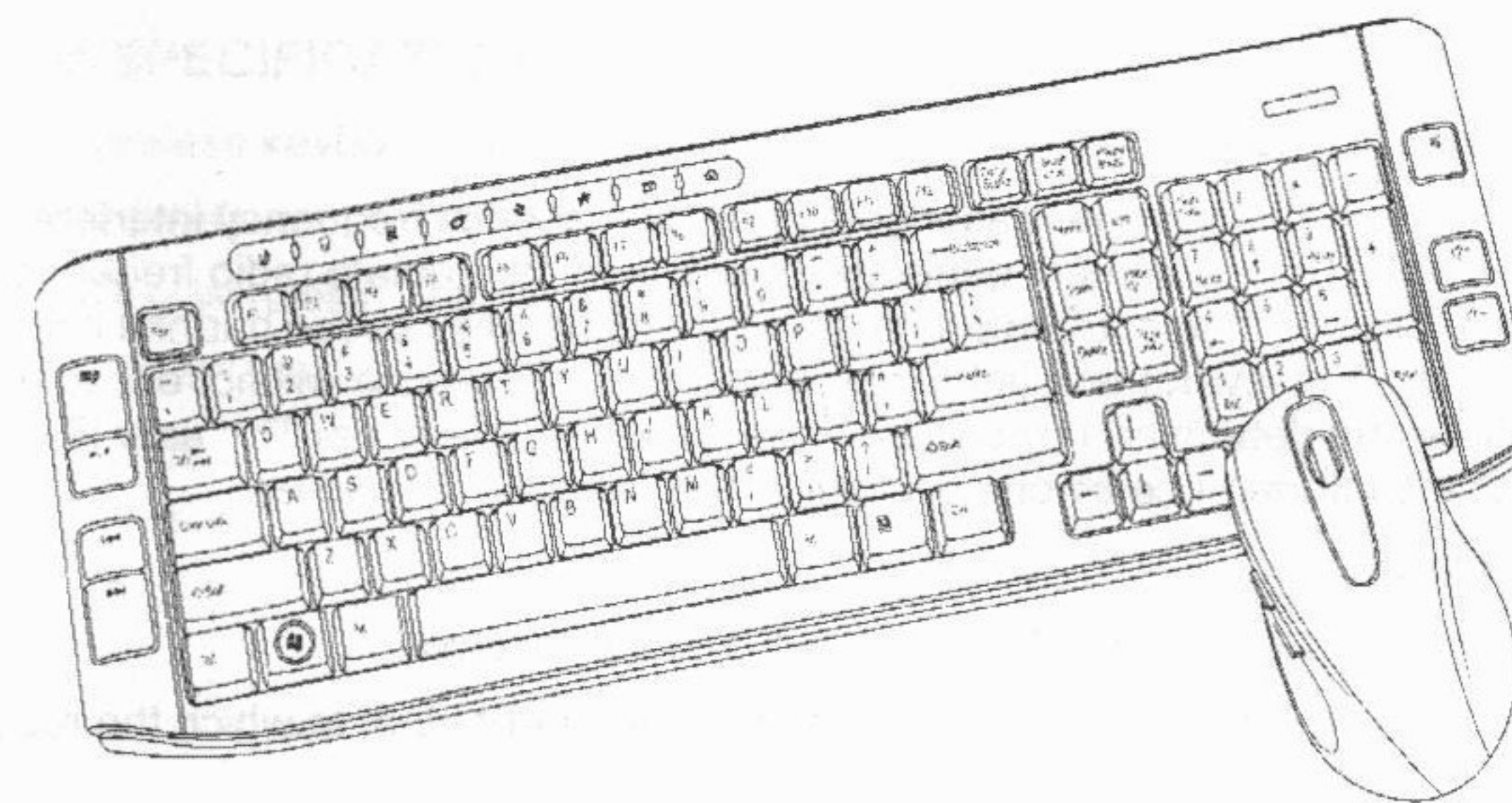
1-866-890-7115

Return Merchandise for Service

Any claim under this warranty must be made in writing to Gear Head, LLC, at the address provide by our technician, within 30 days after the owner discovers the circumstances giving rise to any such claim, and must include a copy of this warranty document, a receipt or copy of your invoice marked with the date of purchase, and the original packaging. You may obtain service by calling the technician for a Return Merchandise Authorization (RMA) number. The RMA number must be prominently displayed on the outside of the shipping carton and the package must be mailed to Gear Head™ postage prepaid.

Wireless Desktop & Laser Mouse

Model #:KBL7500W



User's Manual

All brand name and trademarks are the property of their respective owners

USER'S RECORD:

To provide quality customer service and technical support, it is suggested that you keep the following information as well as your store receipt and this user's manual.

Date of Purchase: _____

Model Number: _____

Serial Number: _____

Product Rev Number (located below the UPC on the package): _____

FCC RADIATION NORM:

FCC

This equipment has been tested and found to comply with limits for Class B digital device pursuant to Part 15 of Federal Communications Commission (FCC) rules.

FCC Compliance Statement

These limits are designed to provide reasonable protection against frequency interference in residential installation. This equipment generates, uses, and can radiate radio frequency energy, and if not installed or used in accordance with the instructions, may cause harmful interference to radio communication. However, there is no guarantee that interference will not occur in television reception, which can be determined by turning the equipment off and on. The user is encouraged to try and correct the interference by one or more of the following measures:

- Reorient or relocate the receiving antenna
- Increase the separation between the equipment and the receiver
- Connect the equipment into an outlet on a circuit different from that to which the receiver is connected to.



CAUTION!

The Federal Communications Commission warns the user that changes or modifications to the unit not expressly approved by the party responsible for compliance could void the user's authority to operate the equipment.

PACKAGE CONTENTS:

Your new wireless keyboard & mouse will ship with the following items.

- Wireless Desktop and Laser Mouse
- Mini USB Receiver
- 2 AAA Alkaline Batteries For the Keyboard
- 1 AA Alkaline Battery For the Mouse
- Driver CD
- User's Manual
- Warranty Information

SYSTEM REQUIREMENTS:

Please be sure that you meet all of the system requirement below to avoid difficulties during installation.

- IBM® PCs, 100% Compatibles, or Mac®
- Windows® 2000, XP, Vista
- Mac® OS 10.3 or Above
- An Available USB Port

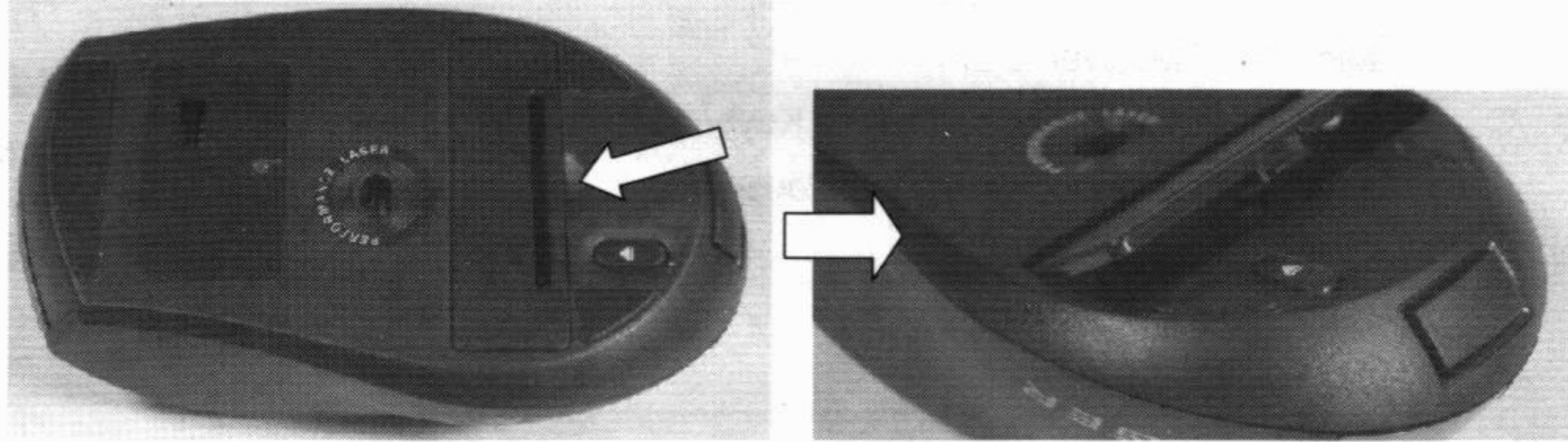
SYSTEM SPECIFICATIONS:

Your new wireless keyboard & mouse complies with the following specifications.

- USB Interface
- 2.4 GHz Wireless Technology
- Maximum Operating Distance of 30 Feet
- 800/1600 DPI Switchable

INSTALLING THE BATTERIES:

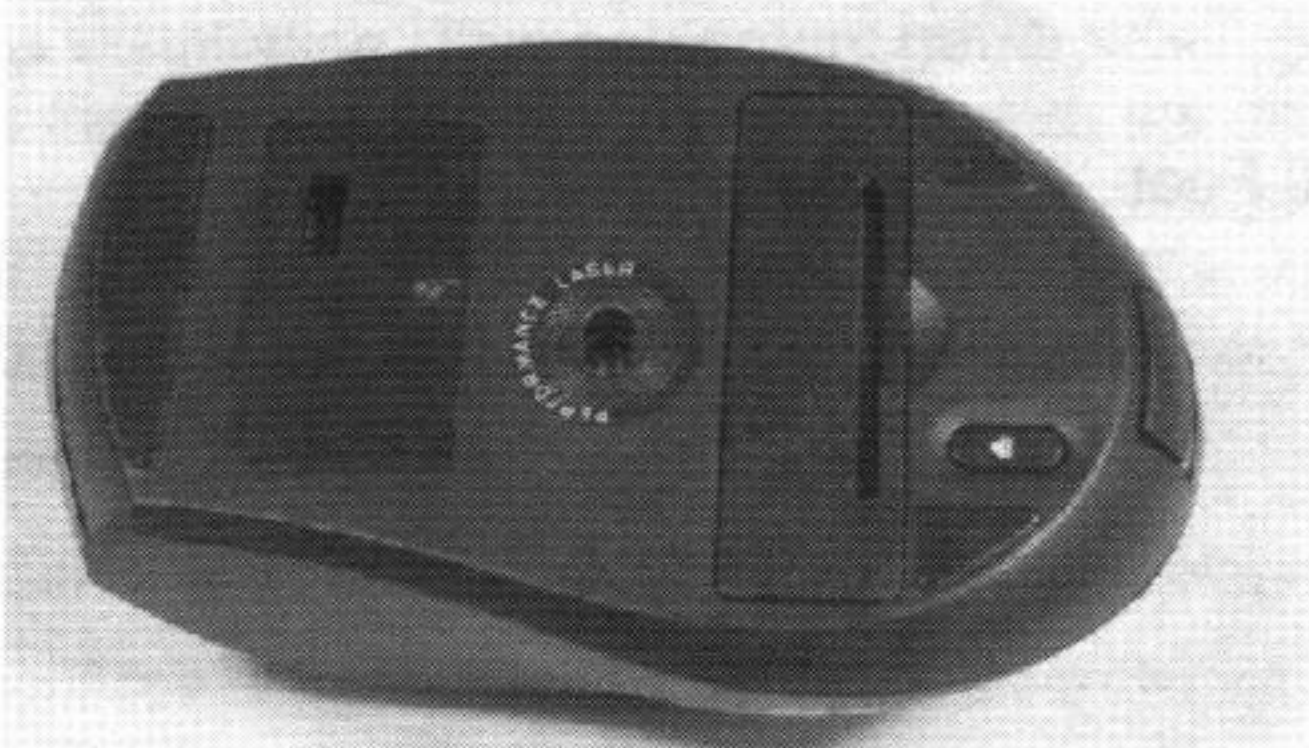
1. Press the Battery Compartment Cover Release Latch at the bottom of your mouse, and then remove the Battery Compartment Cover from your mouse.



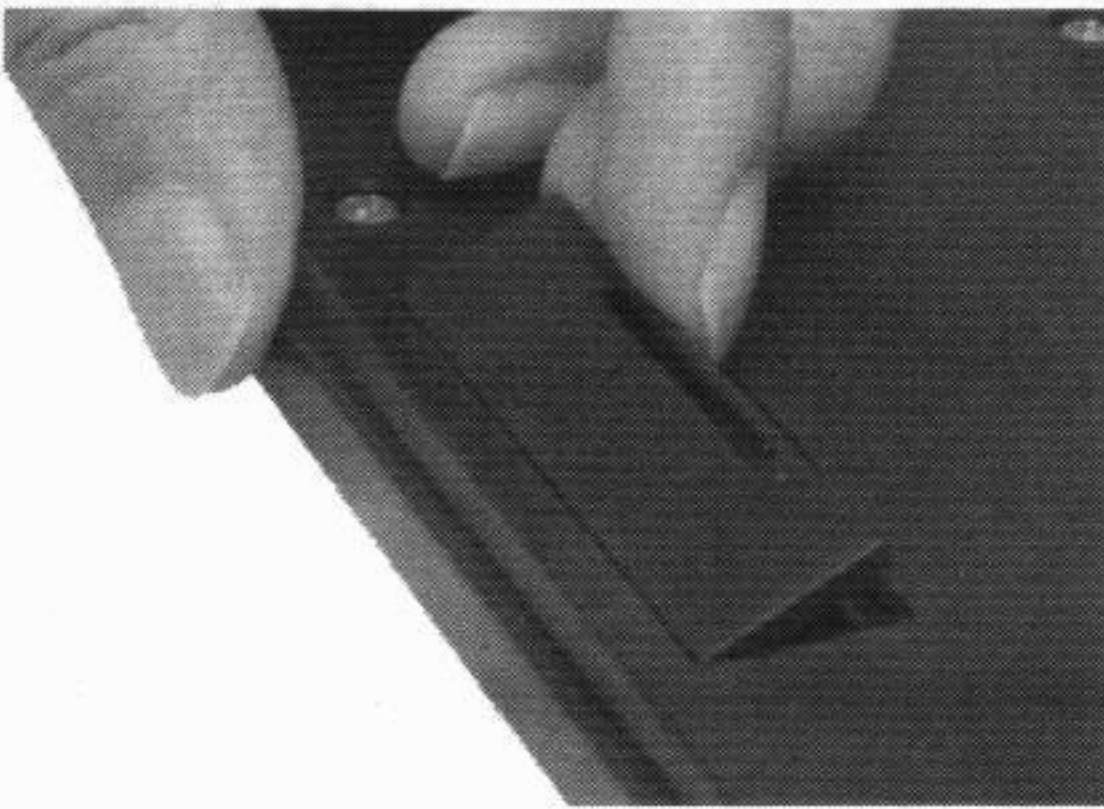
2. Install one AA battery into your mouse following the battery orientation guide in the battery bay.



3. Replace the Battery Compartment Cover back onto your mouse until it securely locks.

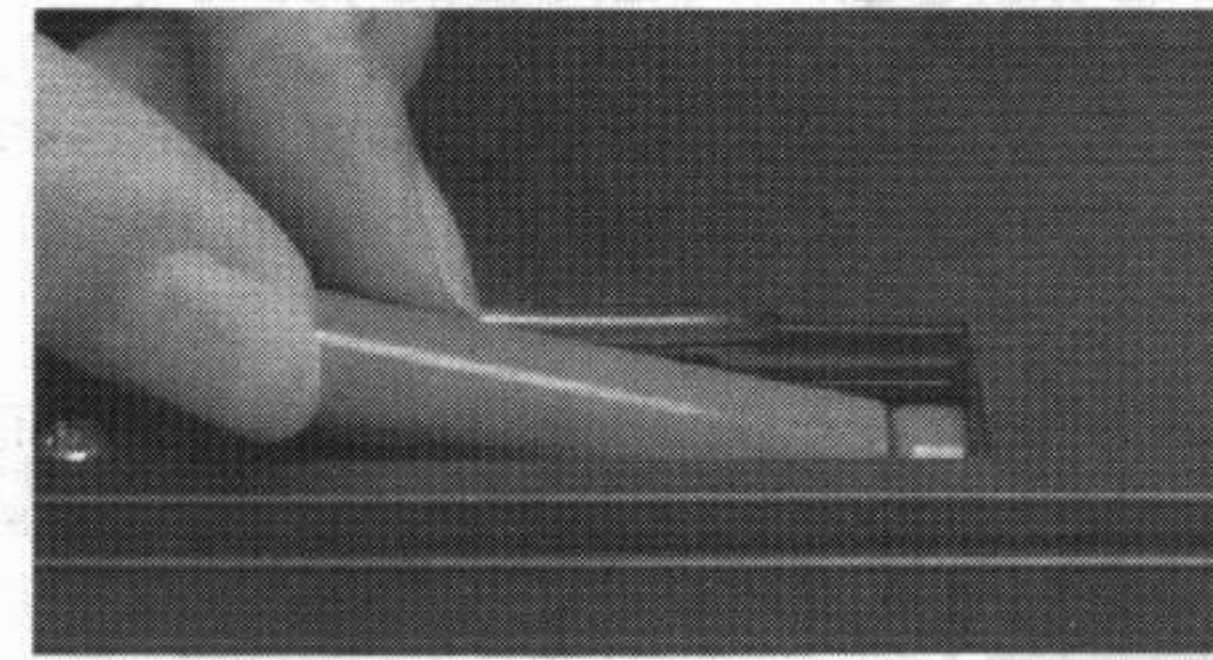


4. Press the Battery Compartment Cover Release Latch at the bottom of your keyboard, and then remove the Battery Compartment Cover from your keyboard.

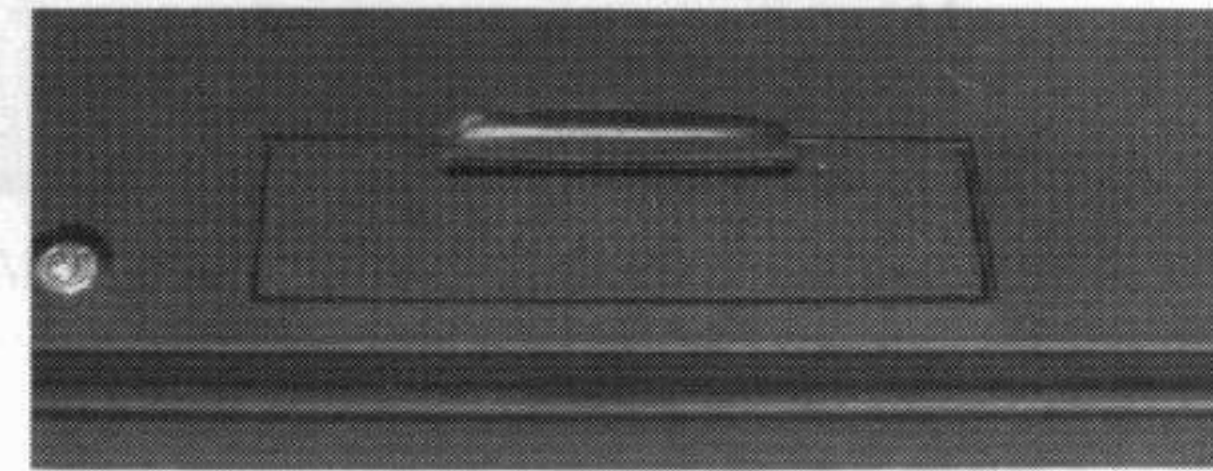


4

5. Install two AAA batteries into your keyboard following the battery orientation guide in the battery bay.

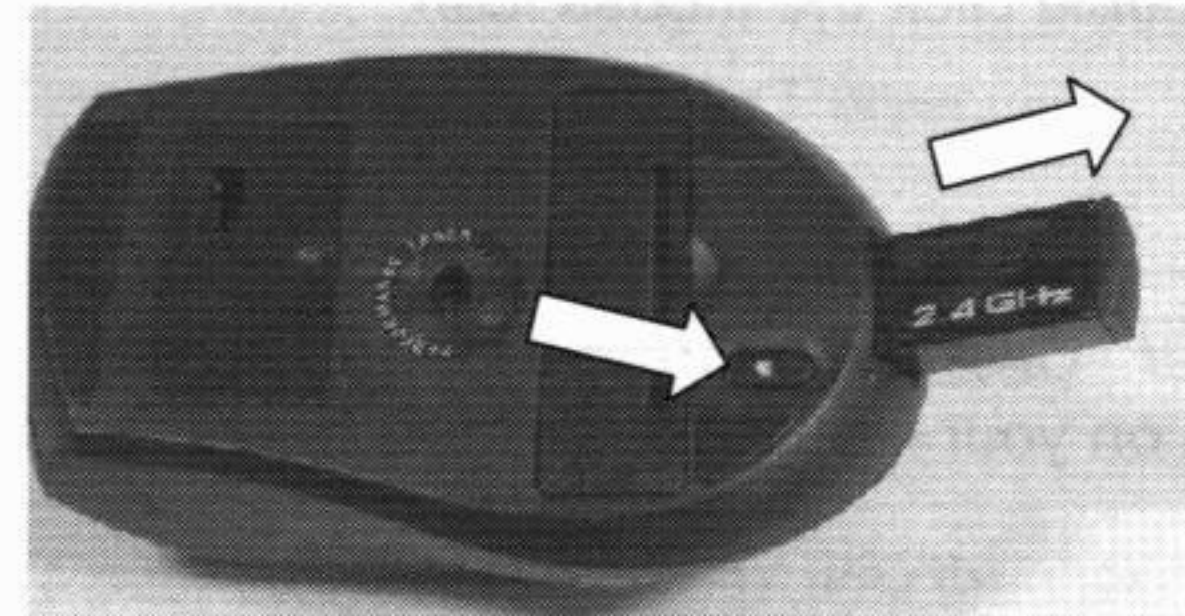


6. Replace the Battery Compartment Cover back onto your keyboard until it securely locks.

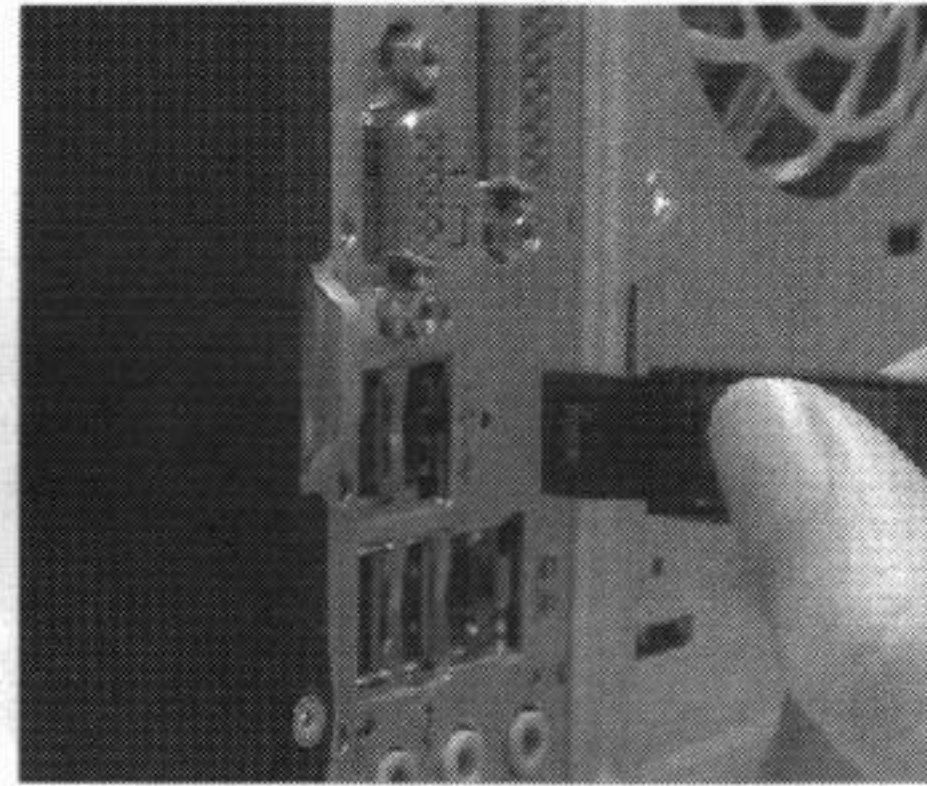


CONNECTING TO A COMPUTER:

1. Turn on your computer.
2. Make sure your keyboard and mouse have batteries properly installed, please refer to the "Installing the batteries" section of this manual if necessary.
3. Eject the receiver from your mouse by pressing the "Eject" button located at the bottom of your mouse.



4. Insert the enclosed receiver into an available USB port on your computer



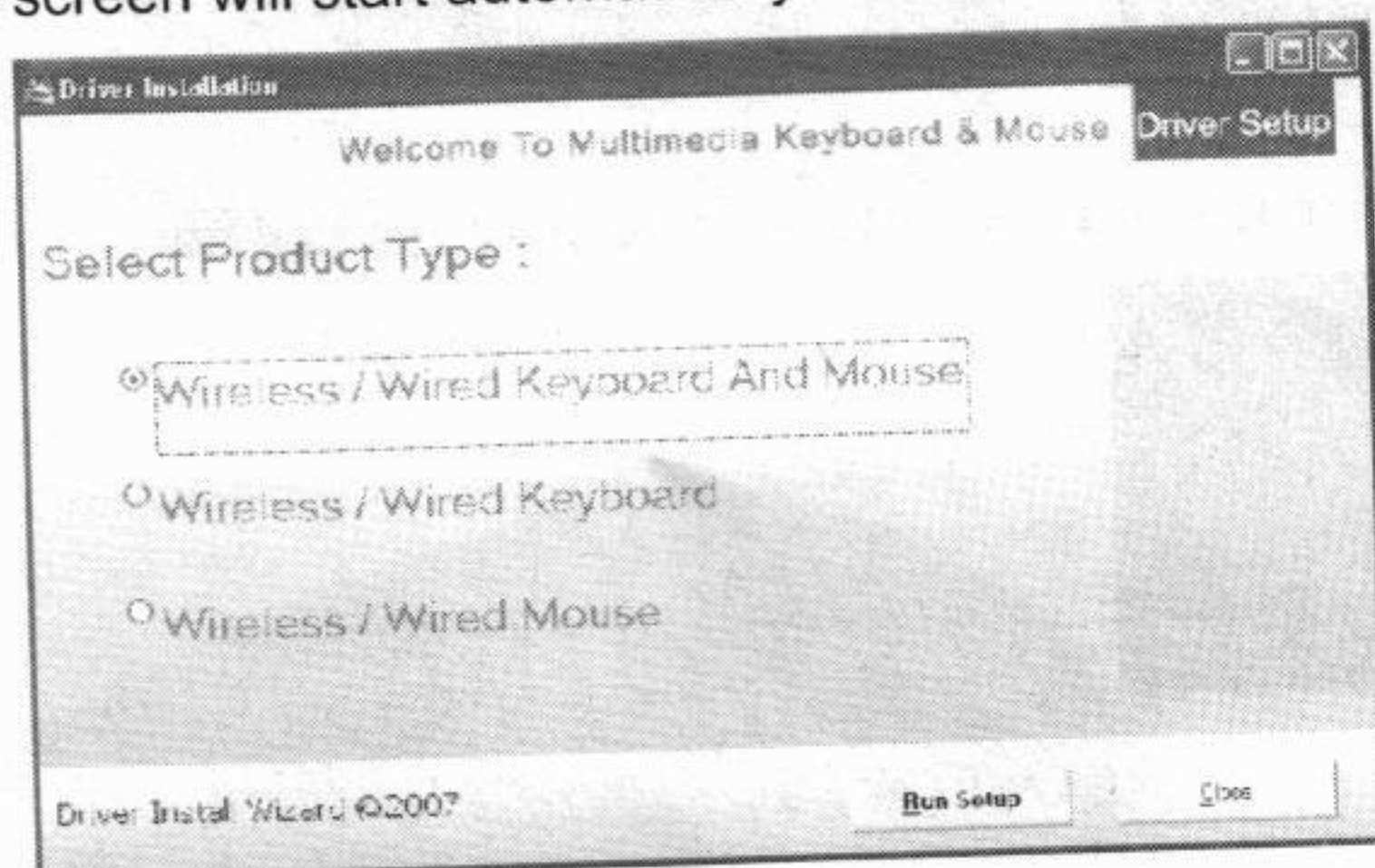
5. Your computer will detect and install the necessary drivers automatically
6. Your wireless keyboard and mouse are now ready to be used.

5

DRIVER INSTALLATION:

Your new Wireless Desktop and Laser Mouse come with a Driver that allows you to use the left and right scroll function of your mouse, as well as the multimedia keys of your keyboard for Windows® 2000, XP and Vista operating systems. To properly install the Driver, please follow the procedures below:

1. Turn on your computer.
2. Place the Driver CD into the CD-ROM Drive of your computer and the Driver Installation screen will start automatically.



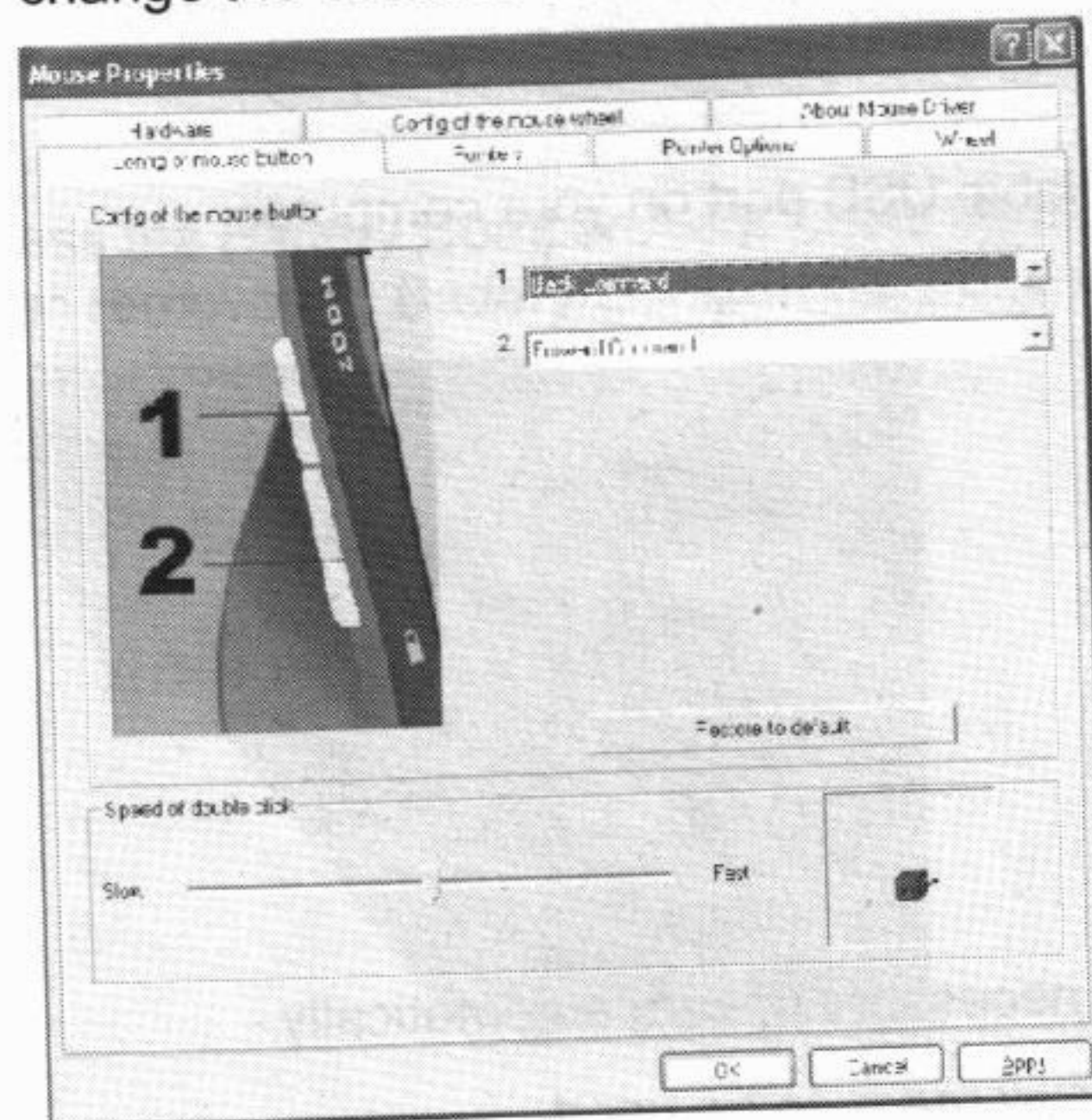
3. Select **"Wireless/Wired Keyboard and Mouse"**, and then click **"Run Setup"**.
4. Follow the onscreen instruction to finish the driver installation.

USING THE DRIVER:

1. After the driver has been installed successfully, two icons will show up at the lower right hand corner of your screen for you to configure some of the function keys of your mouse and keyboard. To configure your mouse, double click the mouse icon.

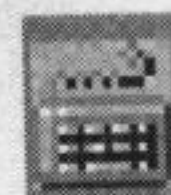


2. The **"Mouse Properties"** Window will appear. Click the **"Config of Mouse Button"** to change the function of the 4th and 5th button on your mouse

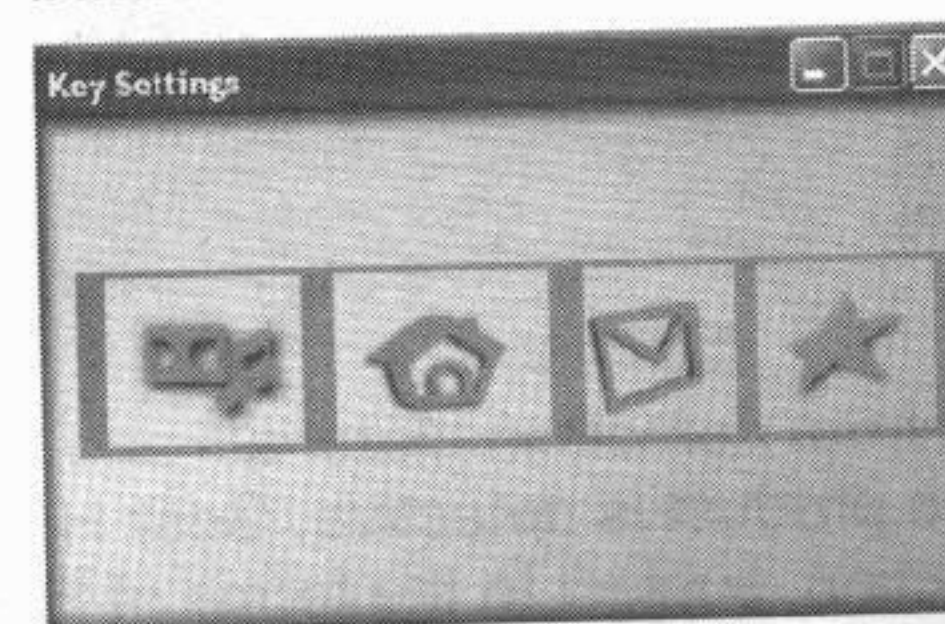


6

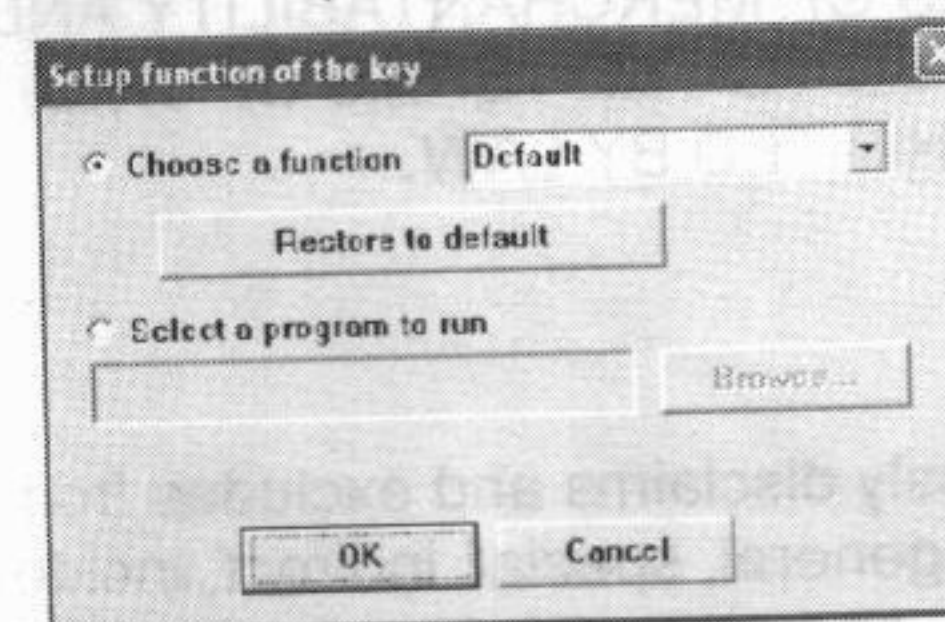
3. Turn configure the programmable keys of your keyboard, double click the keyboard icon.



4. The **"Key Settings"** screen will start. The four buttons represents the programmable keys of your keyboard. To change the function of any of these four keys, simply click on the button.



5. After the desired button to be programmed is selected, the **"Setup function of the key"** window will start. You can choose a function for your computer to take or a program to run when the programmed key is pressed.



KEYBOARD SPECIAL FUNCTION KEYS:

	Run Multimedia Player software.		Open "My computer"
	Play/pause of currently playing multimedia file		Open the calculator.
	Go to previously played multimedia file.		Research.
	Go to the next multimedia file.		Refresh.
	Mute Volume		Open "My favorite" .
	Volume up		Open Outlook Express.
	Volume down		Open Internet Explorer.
	Put your computer in "Standby" Mode.		

7